

Unbalanced fatty acid diets impair discrimination ability of honey bee workers to damaged and healthy brood odors

Meghan M. Bennett^{1,*}, Ashley C. Welchert¹, Mark Carroll¹, Sharoni Shafir², Brian Smith³, Vanessa Corby-Harris¹

¹USDA-ARS Carl Hayden Bee Research Center, 2000 East Allen Road, Tucson, Arizona, USA, 85719

²B. Triwaks Bee Research Center, Department of Entomology, Institute of Environmental Sciences, Robert H. Smith Faculty of Agriculture, Food & Environment, The Hebrew University of Jerusalem, Rehovot, Israel

³Arizona State University, School of Life Sciences, Social Insect Research Group, Tempe, AZ 85281

*corresponding author: meghbennett@gmail.com

Keywords: discrimination, cognition, PER, fatty acids, olfaction

Summary statement

Dietary omegas help honey bees sniff out damaged brood odors to prevent disease from spreading in the hive.

Abstract

Nutrition supports social insect colonies by regulating both individual performance and colony growth. In honey bee colonies, task-related behaviors such as nursing and foraging are partially mediated by nutrition. Young workers (nurses) consume almost all of the pollen in the hive, while foragers consume mostly nectar. Pollen provides vital proteins and lipids, consumed by

nurse bees for approximately one week post eclosion. The role that lipids play in the physiology and behavior of adult bees is gaining significant attention. Recent research suggests that diets with balanced ratios of fatty acids increase olfactory learning in honey bees. Olfaction is crucial for young worker bees to perform brood care and cell cleaning behaviors, which is important for hive health and disease control. Thus, we targeted the early adult, pollen feeding stage to examine how fatty acids affect cognition to hive-relevant odors. We fed young workers (days 0-9) diets balanced or unbalanced in their ratio of essential fatty acids (ω -6:3) sourced from pollen or cooking oils. We then measured their ability to learn healthy and damaged brood odors, as well as their ability to discriminate between the two. Workers fed balanced diets could learn and discriminate between brood odors better than workers fed unbalanced diets. Consumption of both diet types decreased with age, but their cognitive effects remained. These results suggest that diet affects young worker cognitive development, which may affect task-related behaviors and colony hygiene.

Introduction

Honey bees consume pollen and nectar from a variety of plants to meet the dynamic nutritional needs of the colony. Nectar provides carbohydrates, while pollen supplies protein, lipids, and many micronutrients. Adult bees consume pollen during the first two weeks of their life before transitioning to mostly nectar as they take on foraging roles later in life. Pollen contains essential nutrients missing from nectar that are necessary for the development and health of adult workers. The protein and lipid percentages in plant pollen vary between species, but usually range between 1-10% total lipid and 10-40% protein (Feás et al. 2012; Nogueira et al. 2012; Vaudo et al. 2020). The dietary pollen consumed by young workers activates the growth of brood food producing glands (hypopharyngeal and mandibular) and the fat body, an organ with roles in both physiology and nutrient storage. Large glands and fat bodies enable young workers to provision the brood and queen with gland secretions, an activity called “nursing”. Young workers deprived of pollen have smaller glands and fat bodies (Corby-Harris et al. 2014, 2016, 2019). They are also less resistant to stressors like infection and pesticides

(Alaux et al. 2010, 2011; Di Pasquale et al. 2013; Wahl 1983; DeGrandi-Hoffman et al 2010; Crone 2021; Annoscia et al. 2017). While protein and amino acids have been discussed in the literature for decades, the importance of lipids is only recently gaining attention.

Beyond the individual effects of pollen limitation, nutrition is also essential for hive function. Brood rearing diminishes when pollen is limited (Haydak 1935, DeGrandi-Hoffman et al. 2008; Keller et al. 2005). Pollen scarcity results in young nurses begging more frequently for food from others, making fewer visits to developing brood, and even cannibalizing eggs and larvae (Haydak 1935, Schmickl and Crailsheim 2001). Nutritional stress also accelerates behavioral development of workers from in-hive to out-of-hive duties (Corona et al. 2019; Schulz et al. 1998). Lipid stores are more closely related to behavioral task than to age, and precocious foragers have low lipid levels despite their young age (Toth and Robinson, 2005). Habitat fragmentation, climate change, and monoculture landscapes are all common scenarios that can cause poor nutrition or lack of pollen diversity. These scenarios are significant problems for honey bees because pollen availability and diversity are linked to colony survival and disease resistance (Huang et al. 2012; Di Pasquale et al. 2013 & 2016; Requier et al., 2017; Annoscia et al., 2017).

It is clear pollen is important for behavior and colony health, although the nuances of lipid nutrition are not as straightforward as lipid quantity alone. A recent analysis of plant protein to lipid ratios (P:L) and pollinator interactions shows honey bees tend to forage for pollen with lower P:L ratios, 1:1 to 2:1 (Vaudo et al., 2020). Young worker bees are consuming most of the pollen to develop HGs and produce brood food, playing a significant role in regulating the nutritional titers of the hive. One study showed young workers actively regulate their intake of lipids relative to amounts of protein, consuming diets to achieve P:L ratios of ~1.25:1 (Stabler et al., 2021). Whether foragers are responding to colony deficiencies by preferentially foraging on certain pollens with P:L is debated. If the colony is deficient in fatty acids, one study showed workers are not necessarily preferentially foraging for pollen higher in fatty acids, but did prefer pollen with higher P:L ratios (Corby-Harris et al., 2021). Fatty acid ratios like alpha-linolenic acid (ω -3) and linoleic acid (ω -6) are a class of lipids that are important for bee health and behavior. Surveys of stored pollen (bee bread) find that ω -3 is the

most abundant fatty acid (Kaplan et al., 2016; Čeksterytė & Jansen et al., 2012). Broadly speaking, fatty acids are a source of energy (Metzler, 2003) and are components of cell membranes. While many fatty acids are synthesized *de novo*, others must be consumed via pollen and are known as essential fatty acids. The fatty acid composition in pollen varies with the species of plant (Roulston and Cane, 2000; Manning, 2001). For example, pollens from Genus *Eucalyptus* or *Phoenix* have high ω -6:3 ratios, and *Echinops* and *Lupinus* have low ω -6:3 ratios (Arien et al., 2015).

Young worker behavior is less well understood than that of foragers but equally important, especially in terms of brood care and disease control. Young bees rely on olfaction to detect social pheromones and diseased brood within the hive (Masterman et al., 2001; Gramacho and Spivak 2003; McAfee et al. 2018; Wagoner et al., 2019). These olfactory cues can stimulate behaviors such as caring for brood and cleaning out infected cells. These olfactory guided behaviors could be subject to change based via nutritional effects. Cognitively, ω -3 is important for learning odors in honey bees (Arien et al., 2015), although the ratio of ω -6:3 seems to be as, if not more, important to learning and discrimination of floral odors (Arien et al., 2018). Workers first locate diseased brood, then uncap the cell so the brood can be removed by other workers (hygienic behaviors). Bees who engage in uncapping have higher olfactory sensitivity than the bees removing the brood from the cell (Gramacho and Spivak, 2003).

Here, we asked whether fatty acid nutrition influenced the ability of young worker bees to detect in-hive odors. Because the first 6 days of development is primarily the pollen feeding stage, we focused on cognitive capacities of younger workers. We tested two hypotheses that the balance of omega EFAs in the diet influences 1) the ability of young bees to learn damaged brood odors, and 2) to discriminate between healthy and damaged brood odors. Bees are known to uncap brood damaged by wax moth larvae, but only during a narrow window of pupal development (white-purple eye stage) (reviewed in Spivak and Danka, 2021). Thus, we chose healthy and mechanically damaged pupae occupying this pupal stage to test discriminatory abilities of young worker bees. The diet was manipulated by adding cooking oils with different EFA ratios to a base diet, or by providing bees with corbicular pollens with different EFA ratios.

Newly emerged bees were fed these diets for nine days and their ability to learn and discriminate damaged brood odors was assessed at 3, 6, and 9 days.

Materials and methods

Animal care and cage maintenance

Honey bee colonies were maintained at the Carl Hayden Bee Research Center (CHBRC) in Tucson, AZ and all experiments were performed during the spring season (March-June 2021). Natural spring pollens include *Fraxinus* sp. (ash; 45%), *Prosopis* sp. (mesquite; 19%), *Pistacia* sp. (Chinese pistache; 11%), Brassicaceae (10%), and *Eucalyptus/Melaleuca/Eugenia* sp. (8%) (Corby-Harris et al., 2018). Two to three sealed brood frames from five colonies were placed in a hive body in a temperature-controlled incubator ($33^{\circ}\text{C} \pm 1^{\circ}\text{C}$) each week for 12 weeks. All adults that emerged over an 18h period were placed into vented plastic cages (11.5 cm \times 7.5 cm \times 16.5 cm). The cages were kept in an incubator at 34°C with a pan of water at the bottom to maintain humidity at approximately 65-70%. Bees were fed *ad libitum* in cages equipped with two diet plugs containing diet patty, a water bottle, and 30% sucrose solution. Each cage contained 200 bees and diets were switched out every 3 days. Diets were weighed before and after they were placed inside the cages. Consumption was analyzed per bee across days, with dead bees as censored values.

Diet composition

Caged bees were fed balanced or unbalanced fatty acid diets at ~4% of their total diet. Balanced diets had a ~3:5 ratio of ω -6:3, and unbalanced diets had a >5:1 ratio of ω -6:3 (Table 1, n= 10-11 cages per treatment). Previous studies showed that these diets affect olfactory learning in honey bees (Arien et al. 2018). The diet ingredients included defatted soy flour (43%), granulated sugar (25%), drivert sugar (25%), water, and cooking oils or pollen (4%). Cooking oils allowed us to achieve specific ω -6:3 fatty acid ratios as flaxseed oil (~73% polyunsaturated fatty acids) contains a more “balanced” ratio of ω -6:3, while corn oil (~60% polyunsaturated fatty acids) contains a more “unbalanced” ratio of ω -6:3 (Table 1.). We replicated these diets using corbicular pollen containing similar ω ratios; pollen in the spring of

2018 in Arizona at the CHBRC for the balanced diet (Corby-Harris et al., 2018) and a sample of commercial pollen for the unbalanced diet (Durham's Bee Farm Inc., Walls, MS). Dry weight was recorded for pollen samples and broken up using a mechanical bead beater (BioSpec Products, Bartlesville, OK, USA). Total lipid content of corbicular pollen was measured using a sulfo-phospho-vanillin assay (Van Handel, 1985; Corby-Harris et al., 2019). We surveyed multiple bags of pollen at the CHRBC and discovered a bag of commercially available pollen (Durham's Bee Farm Inc.) that contained a comparable, unbalanced ratio of ω -6:3 like corn oil. Using total lipid values of pollen obtained using sulfuric acid- vanillin-phosphoric acid assay, we calculated how many grams of pollen to add to a patty to achieve 4% total lipids of the diet. Control diets had no added oils and only a small amount of *Brassica* pollen (2%) to encourage feeding behaviors.

Three samples taken from diet patties containing pollen or cooking oil were analyzed to assess their fatty acid levels via fatty acid methyl esters (FAME) analysis using GC-MS. Samples were homogenized in an Eppendorf tube containing zirconium beads with a Folch reagent (2:1 v:v chloroform:methanol) using a mechanical bead beater (BioSpec Products, Bartlesville, OK, USA). Each sample had 45 μ l of internal standard, cis-10-heptadecenoic acid (Sigma-Aldrich, St. Louis, MO, MFCD00133175), to account for extraction efficiency and amount of lipid injected into the GC-MS. The samples were then partitioned with 210 μ L of 0.25% KCl, followed by removal of the Folch layer. The remaining sample was dried in a vacuum centrifuge (Savant SPD2010 SpeedVac) and reconstituted in 100 μ L toluene. Samples were then esterified with 1000 μ L of 8% methanolic HCl at 45°C for 16h. The fatty acid methyl esters were mixed with hexane and underwent three washes with distilled water to partition out the acid residues. We sampled the hexane layer and analyzed FAME compounds using EI GC-MS on an HP 7890A gas chromatograph and HP 5975D mass spectrometer detector (Agilent, Inc., Santa Clara, CA). Samples were injected into helium gas at 1.2mL/min inside a HP-5MS column (30 m X 0.25 mm X 0.25 μ m film; Agilent, Inc.). Temperatures ramped at 10°C/min from 35°C with an initial 1 min hold to 230°C, holding for 8 minutes followed by a ramp to 320°C, finishing with a 0.5-minute cool down. The chromatograms were analyzed using Mass Hunter software (Agilent, Inc., Santa Clara, CA). FAME compounds were identified by comparing the retention times of the mass

spectra with esterified standards (Sigma-Aldrich, St. Louis, MO) and compounds were quantified by comparing sample mass fragments (m/z) with known amounts of standards.

Learning and discrimination assays

Learning trials and discrimination assays were conducted using a proboscis extension reflex (PER) associative conditioning assay, which is commonly used to assess honey bee cognition (Smith and Burden, 2014). Bees of known ages (3, 6, 9 days) were taken from the cages and secured in custom-made plastic harnesses. Sample sizes were comparable between balanced (oil N=79; pollen N= 76) and unbalanced diets (oil N= 79; pollen N= 80), sampling equally across ages (average of 25 bees per age 3, 6, 9 days). Bees were fed 5 μ l of 1M sucrose solution and left for 1 hour in the dark to acclimate to the harnesses. Bees that did not exhibit PER were removed from the experiment. Learning assays took place in a clear acrylic case with a custom-built air delivery system. The air flow was controlled using an Arduino mega (Sparkfun Electronics, Boulder, CO, USA) with a motor shield to run a 3-way solenoid (12 volts). Odors tested were from three pre-melanized healthy pupae (H) or from three damaged pupae (D) (decapitation and damage to thorax), pink-purple eye stage. This stage was selected because bees will uncap pupa in this developmental stage if mechanically damaged by wax moth larvae (reviewed in Spivak and Danka, 2021). The brood was carefully taken straight from the frames each morning of an experiment day. Pupae were kept in glass Pasteur pipettes until the start of the experiment approximately 1 hour later. This was to ensure if any of the healthy pupae show melanization or leaking hemolymph from accidental injury they could be discarded and replaced with new healthy pupae. A large plastic pipette tip was fastened on the end of the glass Pasteur pipette to direct the airflow at the bee. A push button controlled 4 seconds of air stream blowing over the pupae. Airflow was controlled by a Whisper 10-gallon air pump (Tetra U.S., Blacksburg, VA) and delivered through ¼ inch tubing. Air was evacuated to remove odors using 3-inch diameter dryer tubing connected to a metal funnel secured to the back of a fan (Honeywell HT-900 TurboForce Air Circulator Fan).

Bees were placed in the learning arena individually for learning trials using established protocols (Bitterman et al., 1983; Takeda, 1961; Smith et al. 2014). Individual trials lasted 60 seconds for a single bee and the inter-trial interval was 10-12 minutes. A differential conditioning procedure was used in which bees learn two conditioned stimuli (CS), one of which was rewarded with 2M sucrose (+) while the other was punished with a salt solution (-). After odor exposure, salt was touched to the tongue briefly for the punished odor while 2-3 μ l sucrose was fed for the rewarded odor. In the current study we used healthy-brood odors as the punished stimulus (CS-), and injured-brood odors as the rewarded stimulus (CS+). Odors were presented in a pseudo-randomized order for 5 trials each and the order of presentation was kept constant throughout the experiment (Smith et al., 2014; Cook et al., 2018).

Statistical analyses

The data from the diet consumption and behavioral assays were analyzed using R (R Core Team 2021) and RStudio (Version 1.4.1106). We used a two-way ANOVA to analyze how diet consumption was impacted by age (1-4, 5-9 days), ratio (balanced vs unbalanced), and EFA source (pollen, oil). We performed pairwise comparisons using a Tukey's HSD post-hoc test on the Type II ANOVA table by running the CRAN package emmeans (estimated marginal means) function. A Shapiro-Wilk test for normality indicated the data were normally distributed ($W=0.9855$, $p= 0.39$) (Sealre et al. 1980).

We used a generalized linear model (GLM) with a binomial error distribution and a logit link to compare how diet affects learning acquisition to damaged and healthy brood odors. We analyzed discrimination ability by calculating the discrimination index (DI) (Masterman et al., 2000). DI was calculated for each individual trial by subtracting the sum of responses to the CS- from the sum of responses to the CS+. For each trial, a higher DI means more bees discriminated between CS+ and CS-, and thus display better discrimination ability (a DI >1 indicates more bees correctly identifying CS+, while a DI <1 show more bees incorrectly responded to CS-). We compared discrimination ability between the two odors across trial (1-5). The response variable was whether the bee exhibited PER, recorded as a 1 or a 0. In the

discrimination assay, the predictor variables were the diet (balanced or unbalanced), age (day 3, 6, 9), the odor (healthy or damaged), the trial (1-5), and fatty acid source (oil or pollen). Cage and hive were random effects.

Results

Diet composition and consumption

To achieve balanced and unbalanced diets, we first analyzed the three core samples from patties enriched with ω -3 and ω -6 levels from cooking oils and corbicular pollen. We then mixed the pollen or oils into the diet patties to achieve ~4% total lipids in the patty. The amount and ratio of ω -3 and ω -6 in the patties was measured using GC-MS (Table 1). Flaxseed oil and spring AZ pollen had low ω -6:3 ratios, while corn oil and commercial pollen had high ω -6:3 ratios (Fig. 1).

Across age groups, bees consumed the unbalanced and balanced diets equally (Fig. 2, ANOVA; $F_{3,86}=1.156$, $p=0.331$). Bees ate less of the diets as they aged beyond 4 days (Fig. 2, $F_{1,86}=71.835$, $p<0.001$), but consumption was not affected by EFA source ($F_{3,86}=0.102$, $p=0.959$).

Learning acquisition and discrimination ability

Our results supported the hypothesis that diet (balanced or unbalanced) affects response to brood odors (damaged or healthy brood). In the following results, a high proportion of responses to a conditioned stimulus (- or +) indicates learning and a significant difference between the proportion of responses to CS- and CS+ suggests that bees learned the two odors differently. We found a significant interaction between ratio and odor on learning acquisition (Fig. 3 A&B; $\chi^2=75.69$, $df=2$, $p<0.001$). Bees fed either of the balanced diets responded to CS+ significantly more than CS- as early as trial 2, (oil: $Z=4.729$, $p<0.001$; pollen: $Z=3.555$, $p<0.001$), and while responses to CS+ increased to over 80%, responses to CS- leveled off at ~20% (Fig. 3 A). In contrast, bees fed the unbalanced diets learned both odors equally ($Z=-2.836$, $p=0.551$), showing no significant difference in learning acquisition between CS- and CS+ for the first two trials. (Fig. 3 B). By trial three, bees fed balanced diets could discriminate

between odors (oil: $Z= 5.732$, $p < 0.001$; pollen: $Z= 1.357$; $p < 0.001$), and bees fed the unbalanced diets (oil: $Z= 0.709$, $p= 0.478$; pollen: $Z= 1.357$, $p= 0.174$) or control diet ($Z=-1.620$, $p=0.1052$) could not discriminate between odors. This suggests that both odor type and diet affect learning acquisition. Therefore, bees fed balanced diets respond to damaged brood odors more quickly than bees fed unbalanced diets.

While a differential response to CS- and CS+ would suggest discrimination ability, a more direct test was explored using the discrimination index (DI). Our results also supported the hypothesis that discrimination ability was affected by diet ratio. A GLMM revealed that DI was significantly affected by trial (table 2; $\chi^2= 661.0$, $df= 4$, $p < 0.001$) and by diet ratio (balanced or unbalanced) ($\chi^2= 7.43$, $df=2$, $p < 0.001$). We found a two-way interaction between diet ratio and age on the DI ($\chi^2= 18.34$, $df= 4$, $p < 0.001$). When ages were pooled, balanced diets had significantly higher DI than unbalanced diets as early as trial 2 (Fig. 4; $Z= 7.010$, $p < 0.001$). This trend continued across the remaining trials; trial 3 ($Z=6.903$, $p < 0.001$), trial 4 ($Z= 4.394$, $p < 0.001$), and trial 5 ($Z= 3.229$, $p= 0.0012$) (Fig. 4). Thus, bees on balanced diets could discriminate earlier and overall better than bees fed unbalanced diets. Overall, we found a strong effect of balanced vs unbalanced diets that was relatively consistent across ages.

To assess how age affected learning and discrimination to brood odors with respect to diet, we compared PER of ages 3, 6 and 9 (Fig. S1, S2, S3). We found a significant two-way interaction between age and odor ($\chi^2= 6.041$, $df=2$, $p= 0.048$); and significant interactions with age and trial ($\chi^2= 13.461$, $df=2$, $p= 0.001$). Interestingly, PER was affected by a three-way interaction between age, EFA source (oil or pollen), and diet (balanced or unbalanced) ($\chi^2= 8.984$, $df=2$, $p= 0.011$). These interactions could be explained when breaking down the intra-trial learning differences between the diets and EFA source. By trial 2, six-day old bees fed the balanced-oil (B-oil) diet had higher PE response to odors than three-day old bees fed unbalanced pollen (U-pollen) diets ($Z= 3.493$, $p= 0.024$). However, since the age effect is marginally significant, along with inconsistent results across diets, we think the age effects in this study are minimal. Overall, we found a strong effect of balanced vs unbalanced diets that was relatively consistent across ages.

Discussion

We found that unbalanced diets impair young worker bees' ability to discriminate between damaged and healthy brood odors. Our study was the first to test the effects of balanced and unbalanced FA ratios on olfaction and learning using hive odors. Bees fed the balanced diet could discriminate between brood odors in earlier trials than the unbalanced groups, results consistent with other studies who discovered balanced and unbalanced diets affect discrimination ability to floral odors (Arien et al., 2015 & 2018). We found day 9 bees had similar cognitive abilities to day 3 and 6 bees, even though they ate less of the diet between 6-9 days. Whether fatty acids eaten by young bees and stored in tissues are later utilized in performing behaviors as bees age is an emerging hypothesis from this study.

A diverse nutritional landscape can offer honey bees a variety of pollen types. Arien et al. (2015) collected pollen from 28 species across time and space of plant species and found ratios of ω -6:3 ranging between 0.09 and 5.34. Even though fatty acids vary considerably across species, honey bee colonies can find themselves in areas lacking nutritional diversity, such as in monocultures or holding yards (temporary areas for colonies while in transport). Some trees from the genus *Rosaceae*, such as almond and apples, carry pollen with high ω -6:3 ratios (Arien et al., 2015). We found a mixture of corbicula pollen collected in the Arizona spring contained low ω -6:3, and workers consumed similar amounts compared to bees fed diets made with commercial pollen high in ω -6:3. Although we used cages in our study, some evidence suggests nurse bees do not select pollen based on nutritional value (Corby-Harris et al., 2018), and prefer fresh over stored pollen (Carroll et al., 2021). Nutritional landscapes are in continual flux, especially with climate change, and the repercussions on honey bee colony survival and individual development is an important area of study. Our results support the general hypothesis that FA ratios influence the cognitive abilities of young worker bees, and this can be seen as early as 3 days old. In sum, we now know that FA diets affect discriminatory ability across ages to both floral and brood odors, suggesting these diets affect cognition more generally. If olfactory cognition is compromised, there could be numerous downstream effects on individual behavior and colony health.

We show fatty acid diets can impact the ability of young bees (3-9 days old) to discriminate between injured- and healthy-brood odors. What task-related repercussions could fatty acid imbalance have in a honey bee colony? Olfaction likely plays a major role in hygienic behavior, as genetic lines of hygienic bees are highly sensitive to diseased brood odors (chalkbrood infected pupae) compared to unselected or wild type bees (Masterman et al., 2001; Gramacho and Spivak 2003; McAfee et al. 2018). Electroantennogram recordings show bees displaying hygienic behavior have higher olfactory sensitivity to brood odors (Masterman et al., 2000). A recent study suggests hygienic bees may also detect *Varroa*-parasitized brood via changes in cuticular hydrocarbon profiles (Wagoner et al., 2019). If indeed fatty acids affect olfactory learning, then diet may have downstream effects on hygienic task-related stimuli and the ability of hives to prevent disease from spreading through the colony. Not all nurse bees engage in hygienic behaviors and there is natural variation in the number of individuals performing these behaviors (Arathi et al., 2000; Arathi et al., 2011; Panasiuk et al., 2010). As with many behaviors, hygienic behavior has a genetic component (Spivak and Gilliam, 1998) but a relatively low heritability 0.23-0.37 (Facchini et al., 2019), suggesting that the environment, and possibly nutrition, influences the trait.

Honey bees engage in hygienic behaviors at a range of ages. Arathi et al. (2000 & 2001) found that bees start performing hygienic behaviors at approximately 15-17 days old, but with considerable variation around this average (15.4 ± 7.4 days). Panasiuk et al. (2010) found that these behaviors can be observed as early as 6 days old. In our study we observed bees as young as 3 days old fed balanced diets, had the ability to discriminate between injured- and healthy-brood odors. This trend continued to 9 days, even though they were eating less of the diet after 4 days. Discriminating between healthy and injured brood odors is likely an important part of performing hygienic behaviors, but it is unclear if these diets also affect uncapping or removal behaviors in the hive, an area that we are currently investigating.

Our behavioral assays suggest that bees fed balanced diets learn and discriminate between healthy and damaged brood odors better than bees fed unbalanced diets, but the mechanism behind this difference is unclear. Fatty acids may affect cognition, olfaction, or both. The rapid and sustained cognitive responses to fatty acid intake that we observed may

involve neural or metabolic pathways. We know that sucrose perception is not significantly impacted by unbalanced diets (Arien et al., 2015), although it is possible that taste and olfactory sensitivity could still be differentially affected. In the brain, olfactory stimuli are sent directly to the antennal lobes and then transmitted to the mushroom bodies and lateral horn, so higher order structures, like the mushroom bodies, may be affected by ω -3 ratios. The importance of lipids for social insect brain function and cognition is an expanding area of research. More data is needed to determine how lipids regulate individual and group behaviors within a colony.

Acknowledgements

We appreciate the support from Lucy Snyder (USDA-CHBRC) with experiments and honey bee colony maintenance. We thank the two anonymous reviewers for their comments and suggestions to improve the manuscript.

Competing interests

The authors declare no competing interests.

Funding

This study was supported by the AFRI-NIFA Postdoctoral Fellowship grant 2020-67034-32162 (to M.M. Bennett) and the North American Pollinator Protection Campaign (to V. Corby-Harris). Additional support was provided by the USDA-ARS (Project Number: 2022–21000-017–00-D). USDA is an equal opportunity employer and provider.

Data availability

Data available upon request from corresponding author.

References

- Alaux, C., Ducloz, F., Crauser, D. and Le Conte, Y.** (2010). Diet effects on honeybee immunocompetence. *Biol Lett.* **4**, 562-565.
- Annoscia, D., Zanni, V., Galbraith, D., Quirici, A., Grozinger, C., Borolomeazzi, R. and Francesco, N.** (2017). Elucidating the mechanisms underlying the beneficial health effects of dietary pollen on honey bees (*Apis mellifera*) infested by *Varroa* mite ectoparasites. *Sci Rep.* **7**, 6258.
- Arathi, H. S. and Spivak, M.** (2001). Influence of colony genotypic composition on the performance of hygienic behaviour in the honeybee, *Apis mellifera* L. *Anim. Behav.* **1**, 57-66.
- Arathi, H. S., Burns, I. and Spivak, M.** (2000). Ethology of hygienic behaviour in the honey bee *Apis mellifera* L. (Hymenoptera: Apidae): Behavioural repertoire of hygienic bees. *Ethology.* **106(4)**, 365-379.
- Arien, Y., Dag, A., Zarchin, S., Masci, T., and Shafir, S.** (2015). Omega-3 deficiency impairs honey bee learning. *Proc. Natl. Acad. Sci. U.S.A.* **112**, 15761-15766.
- Arien, Y., Dag, A. and Shafir, S.** (2018). Omega-6:3 Ratio more than absolute lipid level in diet affects associative learning in honey bees. *Front Psychol.* **9(6)**, 1-8.
- Bennett, M.M., Cook, C.N., Smith, B.H. and Lei H.** (2020). Early olfactory, but not gustatory processing, is affected by the selection of heritable cognitive phenotypes in honey bee. *J. Comp. Physiol. A.* **207(1)**, 17-26.
- Baudier, K.M., Bennett, M.M., Ostwald, M.M., Hart S, Pavlic, T.P. and Fewell, J.H.** (2021). Age-based changes in kairomone response mediate task partitioning in stingless bee soldiers (*Tetragonisca angustula*). *Behav. Ecol. Sociobiol.* **74 (10)**, 125.
- Beshers, S.N. and Fewell, J.H.** (2001). Models of Division of Labor in Social Insects, *Annu. Rev. Entomol.* **46**, 413-440.
- Bitterman, M. E., Menzel, R., Fietz, A., & Schafer, S.** (1983). Classical conditioning of proboscis extension in honeybees (*Apis mellifera*). *J. Comp. Psychol.* **97**, 107-119.
- Carroll M.J., Brown N, Goodall C, Downs A.M. and Sheenan T.H.** (2021). Honey bees preferentially consume freshly-stored pollen. *PLoS ONE.* **16(3)**: e0249458.
- Cook, S. C., Eubanks, M. D., Gold, R. E., & Behmer, S. T.** (2010). Colony-level macronutrient regulation in ants: mechanisms, hoarding and associated costs. *Anim. Behav.* **79(2)**, 429-437.

- Corby-Harris, V., Jones, B.M., Walton, A., Schwan M.R. and Anderson, K.E.** (2014). Transcriptional markers of sub-optimal nutrition in developing *Apis mellifera* nurse workers. *BMC Genomics*. **15**, 134.
- Corby-Harris, V., Snyder, L., Meador, C. and Ayotte, T.** (2018). Honey bee (*Apis mellifera*) nurses do not consume pollens based on their nutritional quality. *PLoS ONE*. **13(1)**: e0191050.
- Corby-Harris, V., Snyder, L. and Meador, C.** (2019). Fat body lipolysis connects poor nutrition to hypopharyngeal gland degradation in *Apis mellifera*. *J. Insect Physiol.* **116**, 1-9.
- Corby-Harris, V., Bennett, M.M., Deeter, M.E., Snyder, L., Meador, C., Welchert, A.C., Hoffman, A., Obernesser, B.T. and Carroll, M.J.** (2021). Fatty acid homeostasis in honey bees (*Apis mellifera*) fed commercial diet supplements. *Apidologie*. **52**, 1195–1209.
- Corona, M., Branchiccela, B., Madella, S., Chen, Y. and Evans, J.** (2019). Decoupling the effects of nutrition, age and behavioral caste on honey bee physiology and immunity. *BioRxiv*, 667931. <https://doi.org/10.1101/667931>.
- Crone, M.K. and Christina, M.G.** (2021). Pollen protein and lipid content influence resilience to insecticides in honey bees (*Apis mellifera*). *J. Exp. Biol.* **(9)**: jeb242040.
- Čeksterytė V and Jansen E.** (2012). Composition and content of fatty acids of various floral origin beebread collected in Lithuania and prepared for storage in different way. *Chem. Technol.* **60**, 57–61.
- Di Pasquale, G, Alaux C, Le Conte, Y, Odoux, J.F., Pioz, M., Vaissiere B.E., Belzunces, L.P. and Decourtye, A.** (2016). Variations in the Availability of Pollen Resources Affect Honey Bee Health. *PLoS ONE*. **11(9)**: e0162818.
- Facchini, E., Bijma, P., Pagnacco, G., Rizzi, R. and Brascamp, W. E.** (2019). Hygienic behaviour in honeybees: a comparison of two recording methods and estimation of genetic parameters. *Apidologie*. **50**, 163–172.
- Feás, X, Vázquez-Tato,MP, Estevinho L, Seijas, J.A. and Iglesias A.,** (2012). Organic Bee Pollen: Botanical Origin, Nutritional Value, Bioactive Compounds, Antioxidant Activity and Microbiological Quality. *Molecules*. **17(7)**:8359-8377.
- Gage, S.L., Calle, S., Jacobson, N., Carroll, M. and DeGrandi-Hoffman, G.** (2020). Pollen alters amino acid levels in the honey bee brain and this relationship changes with age and parasitic stress, *Front. Neurosci.* **14**, 231.
- Gramacho, K.P. and Spivak, M.** (2003). Differences in olfactory sensitivity and behavioral responses among honey bees bred for hygienic behavior. *Behav. Ecol. Sociobiol.* **54**, 472-479.

- DeGrandi-Hoffman, G., Wardell, G., Ahumada-Secura, F., Rinderer, T.E., Danka, R. and Pettis, J.** (2008). Comparisons of pollen substitute diets for honeybees: consumption rates by colonies and effects on brood and adult populations. *J. Apic. Res.* **47**, 265–270.
- DeGrandi-Hoffman, G., Chen, Y., Huang, E. and Huang, M.H.** (2010) The effect of diet on protein concentration, hypopharyngeal gland development and virus load in worker honey bees (*Apis mellifera* L.). *J. Insect Physiol.* **56**, 1184–1191.
- DeGrandi-Hoffman, G., Corby-Harris, V., Chen, Y. et al.** Can supplementary pollen feeding reduce varroa mite and virus levels and improve honey bee colony survival? *Exp. Appl. Acarol.* **82**, 455–473.
- Hendriksma, H. P., Pachow, C. D. and Nieh, J. C.** (2019). Effects of essential amino acid supplementation to promote honey bee gland and muscle development in cages and colonies, *J. Insect. Physiol.* **117**.
- Huang, Z.** (2012). Pollen nutrition affects honey bee stress resistance. *Terr. Arthropod Rev.* **5(2)** 175-189.
- Haydak, M.H.** (1970). Honey bee nutrition. *Ann. Rev. Ent.* **15**, 143– 156.
- Judd, T.M., Magnus, R., Magnus, M. and Fasnacht, P.** (2009). A nutritional profile of the social wasp *Polistes metricus*: Differences in nutrient levels between castes and changes within castes during the annual life cycle. *J. Insect Physiol.* **56(1)**, 42-56.
- Keller, I., Fluri, P. and Imdorf, I.** (2005). Pollen nutrition and colony development in honey bees – part II. *Bee World.* **86**, 27–34.
- Li, G. H., Lei, C. L. , Wang, Z. H. and Huang, Q. Y.** (2014). Dynamics of sex ratio, fresh weight and nutrient contents at five developmental stages of alates in the subterranean termite *Reticulitermes chinensis*, *Insectes Sociaux.* **62**, 51-57.
- Maleszka J., Barron, A.B., Helliwell, P.G. and Maleszka, R.** (2009). Effect of age, behaviour and social environment on honey bee brain plasticity. *J. Comp. Physiol. A.* **195(8)**:733-40.
- Masterman, R., Smith, B. H. and Spivak, M.** (2000). Brood odor discrimination abilities in hygienic honey bees (*Apis mellifera* L.) using proboscis extension reflex conditioning. *J. Insect Behav.* **13(1)**, 87-101.
- Masterman R, Ross R, Mesce K and Spivak M.** (2001). Olfactory and behavioral response thresholds to odors of diseased blood differ between hygienic and non-hygienic honey bees (*Apis mellifera* L.). *J Comp Physiol A.* **187(6)**:441-52.
- Nogueira, C, Iglesias, A, Feás, X and Estevinho, L.M.** (2012). Commercial bee pollen with different geographical origins: a comprehensive approach. *Int J Mol Sci.* **13(9)**:11173-87.

- Panasiuk, B, Skowronek, W, Bienkowska, M, D. Gerula and Węgrzynowicz, P.** (2010). Age of worker bees performing hygienic behavior in a honeybee colony. *J. Api. Sci.* **54**, 109-115.
- Perez, M., Rolland, U., Giurfa, M. and d'Ettoire, P.** (2013). Sucrose responsiveness, learning success, and task specialization in ants. *Learning and Memory*, **20**, 417-420.
- Pernal, S. and Currie, R.** (2001). The influence of pollen quality on foraging behavior in honeybees (*Apis mellifera* L.). *Behav. Ecol. Sociobiol.* **51**, 53–68.
- Robinson, G.E.** (1992). Regulation of division of labor in insect societies. *Ann. Rev. Entomol.* **37**, 637–65.
- Roeder, T.** (2005). Tyramine and octopamine: Ruling behavior and metabolism. *Ann. Rev. Entomol.* **50**, 447–477.
- Requier, F., Odoux, J.F., Henry, M. and Bretagnolle, V.** (2017). The carry-over effects of pollen shortage decrease the survival of honeybee colonies in farmlands, *J. Appl. Ecol.* **54**(4), 1161–1170.
- Scheiner, R., Reim, T., Søvik, E., Entler, B. V., Barron, A. B., & Thamm, M.** (2017). Learning, gustatory responsiveness and tyramine differences across nurse and forager honeybees. *J. Exp. Biol.* **220**(8), 1443–1450.
- Schmickl, T and Crailsheim, K.** (2001). Cannibalism and early capping: strategy of honeybee colonies in times of experimental pollen shortages. *J. Comp. Physiol. A.* **187**: 541-547.
- Schulz, D., Huang, Z.Y. and Robinson, G.** (1998). Effects of colony food shortage on behavioral development in honey bees. *Behav. Ecol. Sociobiol.* **42**, 295–303.
- Searle, S.R., Speed, F.M., and Millike, G.A.** (1980). Population marginal means in the linear model: An alternative to least squares means, *Am. Stat.* **34**(4), 216-221.
- Smith, B. H. and Burden, C. M.** (2014). A Proboscis Extension Response Protocol for Investigating Behavioral Plasticity in Insects: Application to Basic, Biomedical, and Agricultural Research, *JoVE*. doi: 10.3791/51057.
- Spivak, M. and Danka, R.G.** (2021). Perspectives on hygienic behavior in *Apis mellifera* and other social insects. *Apidologie* **.52**, 1–16.
- Stabler, D., Al-Esawy, M., Chennells, J.A., Perri, G., Robinson, A., Wright, G.A.** (2021). Regulation of dietary intake of protein and lipid by nurse-age adult worker honeybees. *J. Exp. Biol.* **224** (3).
- Sunshine, H. and Iruela-Arispe, M.L.** (2012). Membrane lipids and cell signaling. *Curr. Opin. Lipidol.* **28**(5):408-413.

- Toth, A. L. and Robinson, G. E.** (2005). Worker nutrition and division of labour in honeybees', *An. Behav.* **69**(2), 427–435.
- Van der Moezel, P.G., Delfs, J.C., Pate, J.S., Loneragan, W.A. and Bell, D.T.** (1987). Pollen selection by honeybees in shrublands of the Northern Sand plains of Western Australia. *J. Api. Research.* **26**, 224–232.
- Van Handel, E.** (1985). Rapid determination of total lipids in mosquitoes. *J. Am. Mosquito. Contr.* **1**: 302–304.
- Vaudo, A.D., Tooker, J.F., Patch, H.M., Biddinger, D.,J, Coccia, M., Crone, M.K., Fiely, M., Francis, J.S., Hines, H.M., Hodges, M., Jackson, S.W., Michez, D., Mu, J., Russo, L., Safari, M., Treanore, E.D., Vanderplanck, M., Yip, E., Leonard, A.S. and Grozinger, C.M.** (2020). Pollen Protein: Lipid Macronutrient Ratios May Guide Broad Patterns of Bee Species Floral Preferences. *Insects.* **11**(2):132.
- Wahl, O. and Ulm, K.** (1983). Influence of pollen feeding and physiological condition on pesticide sensitivity of the honey bee *Apis mellifera carnica*. *Oecologia.* **59**, 106– 128.
- Zarchin, S., Dag, A., Salomon, M., Hendriksma, H.P. and Shafir, S.** (2017). Honey bees dance faster for pollen that complements colony essential fatty acid deficiency. *Behav. Ecol. Sociobiol.* **71**, 172.

Figures and Tables

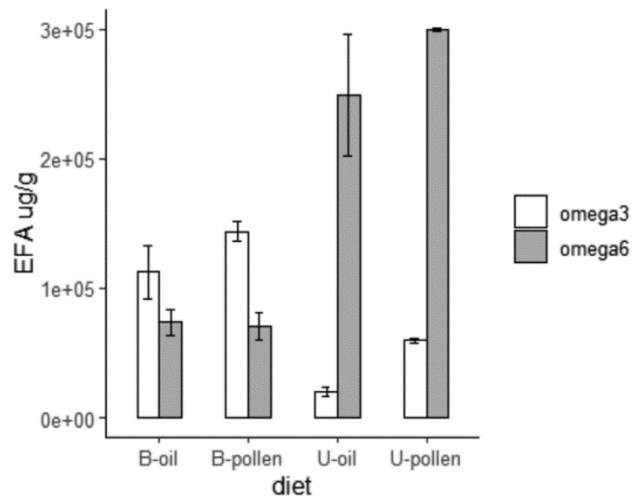


Figure 1. Means of EFAs found in patties supplemented with oils or pollen. Diets with balanced ω -6:3 EFA ratios are indicated with a “B” (B-oil, flaxseed oil; B-pollen, spring AZ pollen), and diets with unbalanced ratios are indicated with a “U” (U-oil, corn oil; U-pollen, commercial pollen). Bars represent the mean EFA concentrations in ug/g of oil or pollen in patties, with standard error bars.

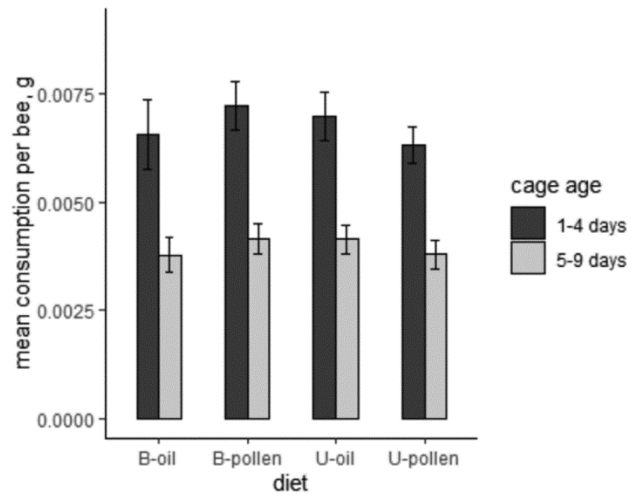


Figure 2. Average consumption of pollen patty diets by caged bees in incubators. Bars with standard errors represent mean consumption of diets in the first four days (dark gray), and remaining days 5-9 (light gray). The Y-axis represents average consumption per bee in grams. Error bars are calculated across multiple cages.

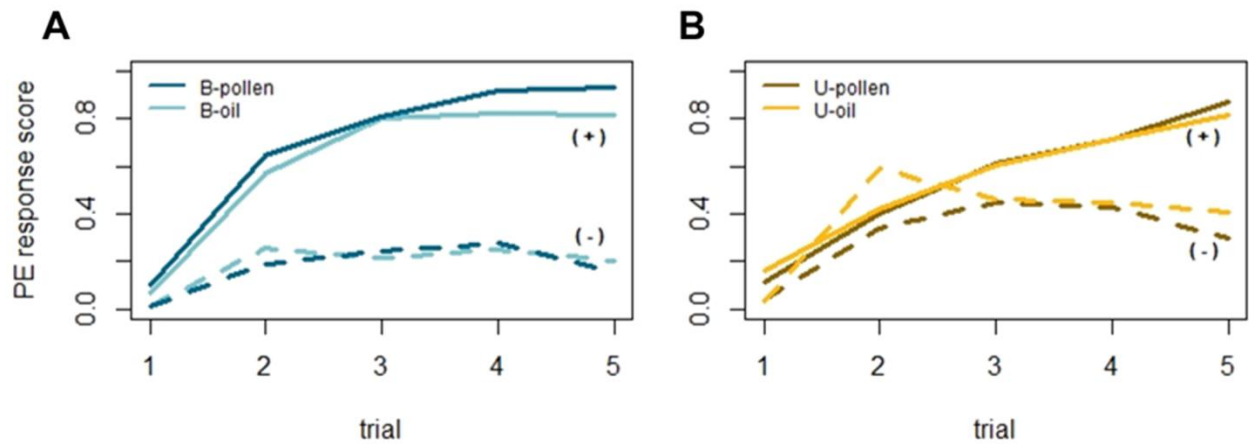


Figure 3. A&B Learning acquisition curves of bees on balanced (A) and unbalanced (B) diets, with ages pooled. Proportion of proboscis extension (PE) response to odors over five trials. Solid lines represent damaged-brood odors rewarded (+) with sucrose, and the dashed lines indicate healthy-brood odors punished with salt (-). Balanced diets in panel A are shown in dark blue (B-pollen) and light blue (B-oil). Unbalanced diets in panel B are shown in dark yellow (U-pollen) and light yellow (U-oil).

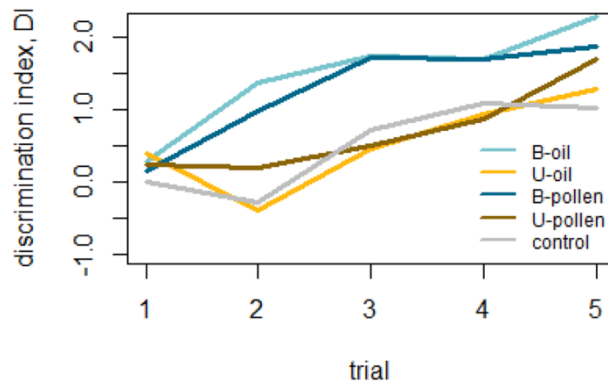


Figure 4. Discrimination index of bees fed balanced or unbalanced diets across 5 trials, with ages pooled. The DI was calculated for each trial by subtracting the sum of responses to the CS- from the sum of responses to the CS+. Balanced diets are the top lines shown in dark blue (B-pollen) and light blue (B-oil). Unbalanced diets are the bottom lines shown in dark yellow (U-pollen) and light yellow (U-oil). The control diet is shown in gray.

Table 1. Averages and s.e. of ω ratios in balanced and unbalanced diet patties.

diet	EFA source	ω -3 ug/g	ω -6 ug/g	ω -6:3 ratio
balanced	flaxseed oil	112,313 \pm 20,042	73,952 \pm 10,058	0.65
	pollen (spring AZ)	143,616 \pm 7,517	70,404 \pm 10,730	0.49
unbalanced	corn oil	19,869 \pm 3,594	248,843 \pm 47,321	12.52
	pollen (commercial)	59,871 \pm 1,647	299,855 \pm 1,045	5.00

Table 2. Discrimination index analysis of deviance table (Type II tests). GLM results showing an effect of diet and trial, but no two-way interactions between diet and age. Significance based on 95% confidence interval, significant p-value listed with asterisk*.

factor	LR Chisq	df	Pr(>Chisq)
age	28.30	2	p <0.0001*
odor	268.87	1	p <0.0001*
trial	661.01	4	p <0.0001*
diet type	9.87	1	p <0.0001*
ratio	7.43	2	p <0.024*
odor*trial	81.51	4	p =0.001*
age*diet type	5.76	2	p= 0.056
age*ratio	18.34	4	p =0.001*
odor*ratio	75.69	2	p <0.001*
trial*ratio	14.48	8	p= 0.070
odor*diet type*ratio	10.95	1	p <0.001*
age*diet type*ratio	8.76	2	p=0.012*

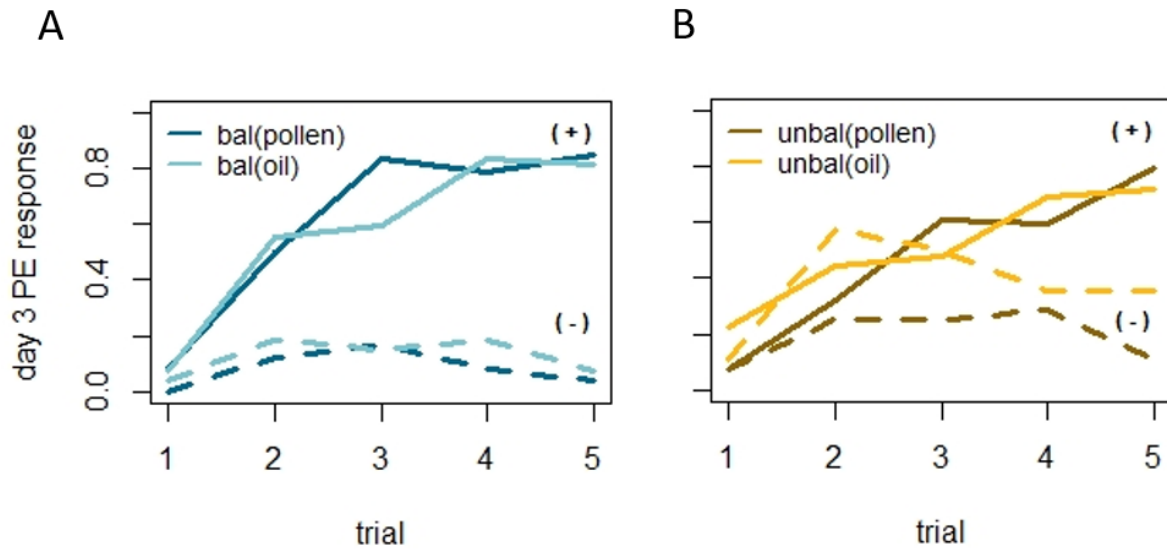


Fig. S1. A&B Day 3 learning and discrimination ability of bees on balanced (A) and unbalanced (B) diets. Proportion of proboscis extension (PE) response to odors over five trials. Solid lines represent damaged brood odors rewarded (+) with sucrose, and the dashed lines are healthy brood odors punished with salt (-).

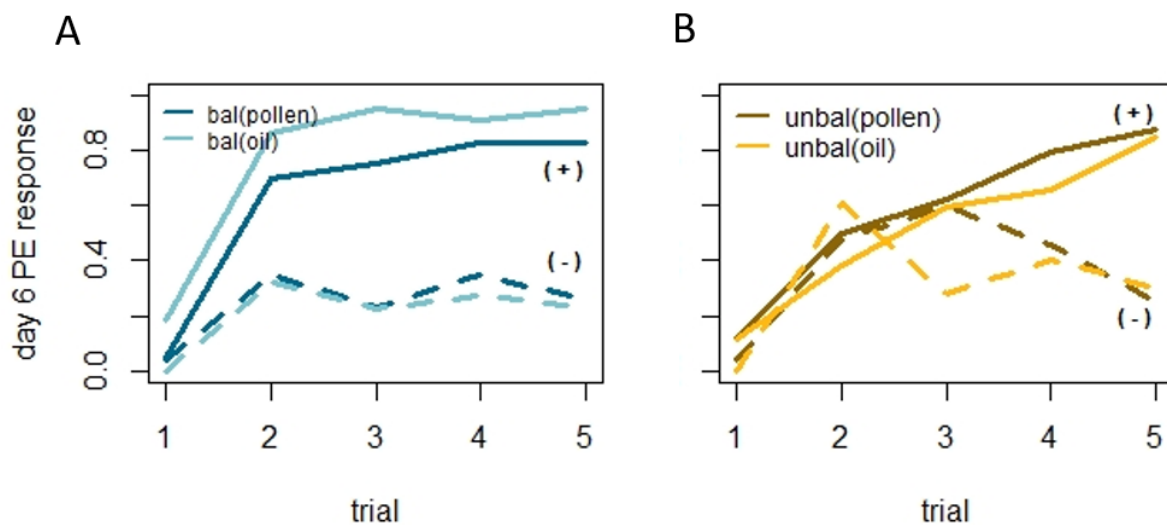


Fig. S2. A&B Day 6 learning and discrimination ability of bees on balanced (A) and unbalanced (B) diets. Proportion of proboscis extension (PE) response to odors over five trials. Solid lines represent damaged brood odors rewarded (+) with sucrose, and the dashed lines are healthy brood odors punished with salt (-).

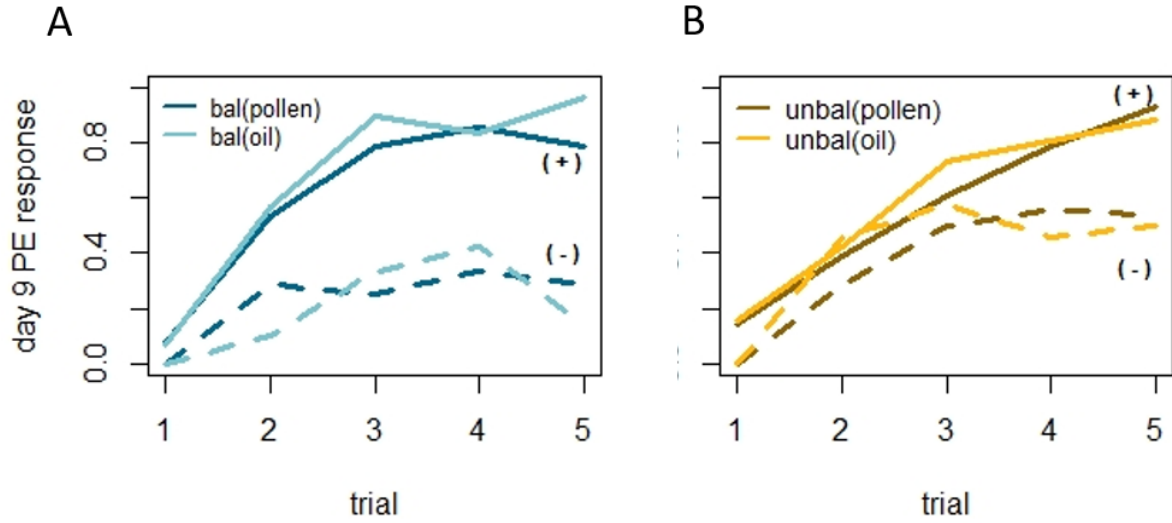


Fig. S3. A&B Day 9 learning and discrimination ability of bees on balanced (A) and unbalanced (B) diets. Proportion of proboscis extension (PE) response to odors over five trials. Solid lines represent damaged brood odors rewarded (+) with sucrose, and the dashed lines are healthy brood odors punished with salt (-).