

Ambient temperature affects multiple drivers of physiology and behaviour: Adaptation for timely departure of obligate spring migrants

Sayantana Sur¹, Khushboo Chaturvedi^{2*}, Aakansha Sharma^{1*}, Shalie Malik², Sangeeta Rani² and Vinod Kumar^{1#}

¹Department of Zoology, University of Delhi, Delhi 110007, India; ²Department of Zoology, University of Lucknow, Lucknow, 226 007, India

*Equal contribution

#Corresponding author: Email: drvkumar11@yahoo.com

Postal address: Department of Zoology, Lab 218, University of Delhi, Delhi - 110007, India

Keywords: Gene expression; Hypothalamus; Muscle; Photoperiod; Skin; Temperature

Summary statement:

Songbirds use temperature in behavioral decision when to migrate from wintering areas. They show transcriptional responsiveness to temperature as a significant component of the overall adaptive strategy for spring migration.

Abstract

We investigated the role of ambient temperature in departure from wintering areas of migratory blackheaded buntings in spring. Birds transferred at 22 and 35 °C temperatures to long days were compared with one another and to controls held on short days for indices of readiness to migrate (*Zugunruhe*, fattening, weight gain), levels of testosterone, and gonadal recrudescence. Temperature affected the development of migratory behaviour and physiology: buntings under long days at 35°C, compared to those at 22°C, showed altered migratory behaviour (daily activity and *Zugunruhe* onset), and enhanced muscle growth and plasma testosterone levels; however, no effect on testis growth. Temperature was perceived at both peripheral and central levels, and affected multiple molecular drivers culminating into the migratory phenotype. This was evidenced by post-mortem comparison of the expression of 13 genes with known functions in the skin (temperature-sensitive TRP channels: *trpv4* and *trpm8*), hypothalamus and/ or midbrain (migration-linked genes: *th*, *ddc*, *adcyap1* and *vps13a*) and flight muscles (muscle growth associated genes: *ar*, *srd5a3*, *pvalb*, *mtor*, *myod*, *mstn* and *hif1a*). In photostimulated birds, the expression of *trpv4* in skin, of *th* in hypothalamus and midbrain, and of *srd5a3*, *ar pvalb* and *mtor* genes in flight muscle, in parallel with T levels, was greater at 35°C than the 22°C. These results demonstrate the role of ambient temperature in development of the spring migration phenotype, and suggest that transcriptional responsiveness to temperature is a component of the overall adaptive strategy in latitudinal songbird migrants for timely departure from wintering areas in spring.

1. Introduction

The pervasiveness of the ability to assess and use annual photoperiodic cycle in regulation of annual life-history states (LHSs) has been identified as a central component of the metabolic and reproductive fitness across broad taxa including birds (Bradshaw and Holzapfel, 2007; Cassone and Yoshimura, 2015). Photoperiod change is closely accompanied with temperature change both during the 24-h day as well as across seasons of the year. Daytime is warmer than the nighttime, and spring/ summer period is warmer than the autumn/ winter period. Increasing evidences have shown that photoperiodic birds use temperature in the development of robust-system level behaviour associated with seasonal migration and reproduction, with species and sex variations (Berchtold et al., 2017; Helm et al., 2017; Sur et al., 2019; Trivedi et al., 2019). For example, high temperature advanced regression, but not recrudescence, of the testes in photostimulated mountain white crowned sparrows (*Zonotrichia leucophrys oriantha*; Wingfield et al., 2003), European starlings (*Sturnus vulgaris*; Dawson, 2005) and great tits (*Parus major*; Silverin et al., 2008). A recent study using within-individual experimental approach further showed that warmer conditions in climate-controlled aviaries advanced egg-laying timing in great tits (Verhagen et al., 2020). By contrast, photostimulated gonadal maturation in migratory white crowned sparrows (*Z. l. gambelli*) was resistant to temperature extremes, except a negative temperature effect in female, but not male, sparrows (Wingfield et al., 1996).

The latitudinal avian migrants present an elegant example of biological adaptation to both photoperiod and temperature (Helm et al., 2017). They are exposed to widely different photoperiods and temperatures between breeding and wintering areas, and to consistently varying photoperiods and temperatures while migrating across latitudes twice a year (Karagicheva et al., 2016; 2018). Experiments have shown that ambient temperature affected the photoperiodic induction of body fattening and weight gain, *Zugunruhe* (nocturnal migratory restlessness in captive birds; Wagner, 1930; Berthold and Querner, 1988), and gonadal maturation in migratory species (Ramenofsky and Wingfield, 2007; Kumar et al., 2010). There were reduced body fattening and weight gain, delayed *Zugunruhe* onset, and slowed testis maturation in migratory blackheaded buntings (*Emberiza melanocephala*) exposed to stimulatory long days at 40 °C, compared to those at 27 °C (Singh et al., 2012). Similarly, photostimulated white-throated sparrows (*Zonotrichia albicollis*) showed increased intensity of *Zugunruhe* at 14 °C, compared to 24 °C (Berchtold et al., 2017). There were reduced tissue specific fat deposition and overall weight gain, and accelerated testis growth

migratory redheaded buntings (*Emberiza bruniceps*) exposed to long day at 38 °C, compared to those 22 °C (Sur et al., 2019; Trivedi et al., 2019).

Studies from field support the results obtained from captive birds subjected to experimental manipulations. In both great tits and blue tits (*Cyanistes caeruleus*), for example, the ambient temperature influenced egg-laying dates through its effects on the availability of insects as food (Visser et al., 2009). Similarly, decades-long observations showed advancement of the egg-laying dates in migratory pied flycatchers (*Ficedula hypoleuca*; Both and Visser, 2001). Similarly, a number of field studies over the years have reported an early arrival to the breeding ground of many migratory bird species, perhaps in response to the global warming (Tryjanowski et al., 2002; Jonzén et al. 2006; Palm et al., 2009; Kullberg et al., 2015). Further, the phylogenetic meta-analysis of 413 bird species concluded the advancement of spring departure dates by 1.2 days per °C rise in the ambient temperature (Usui et al., 2017).

Although many studies have shown the influence of temperature in the development of migratory behavior, it remains inconclusive whether temperature is a direct causal factor or it acts via affecting the energetic cost and food availability (Newton, 2008). There is also some debate as to whether an early expression of migratory behavior in response to warm temperature in captivity consistently relates to the early arrival at the breeding grounds as reported by many field studies. Much of the experimental evidence is consistent with idea that migratory birds use temperature and respond to it independent of the other cues, such as the photoperiod (Berchtold et al., 2017).

We hypothesized that migratory songbirds use ambient temperature in behavioural decisions when to depart from the wintering areas in spring. The prediction was that a warmer temperature prior to the onset of spring migration would accelerate the underlying molecular processes, and consequently increase the probability and intensity of *Zugunruhe*; however, a sudden high rise in temperature might activate thermoregulation and in turn adversely affect the migratory behavior. To test this hypothesis, we found an ideal experimental system in migratory blackheaded buntings. Bunting is an obligate Palearctic-Indian songbird migrant with predictable yearly migrations between same breeding (west Asia and southeast Europe) and wintering (mainly India) areas (Ali and Ripley, 1999). It arrives in India during October/ November, overwinter, and begin to return to breeding grounds (spring or vernal migration) during very late in March or early April, when the

length of the natural light period (sunrise to sunset) is ~ 12.5 h and the average ambient daytime temperature is ~35 °C (Ali and Ripley, 1999). Both, the development of spring migratory phenotype (body fattening and weight gain, and *Zugunruhe*) and departure timing can be reproduced if blackheaded buntings are held in captivity under semi-natural photoperiod and temperature conditions, and so they were disallowed from migrating (Gupta and Kumar, 2013). Similar photostimulated spring migratory and breeding (testicular growth) states are induced in buntings exposed to artificial stimulatory photoperiod (Misra et al., 2004; Rani et al., 2006; Singh et al., 2015), but ambient temperature affects both timing and magnitude of the photoperiodic response (Singh et al., 2012).

Here, blackheaded buntings transferred from short days to long days at 22 and 35 °C were compared with one another and to controls held at both these temperatures on short days for the indices of readiness to migrate (*Zugunruhe*, fattening, weight gain), levels of testosterone, and gonadal recrudescence. Post-mortem, they were compared for the expression of 13 candidate genes in the skin (peripheral temperature perception), hypothalamus and/ or midbrain (the regulatory site of photoneuroendocrine effects), and flight (skeletal) muscles (the site of intense aerobic exercise when in flight). These genes with known functions were chosen based *a priori* on three postulations that we made at the beginning of the study. First, ambient temperature is perceived at both peripheral (skin) and central (hypothalamus) levels. This involves member genes of the subfamily V and M of the transient receptor potential (TRP) cation channels which are sensitive to warm (~27–37 °C; *trpv4* gene) and cold (~8–25 °C; *trpm8* gene) temperatures (Bautista et al., 2007; Wang and Siemens, 2015). TRP channels of skin keratinocytes sense the temperature, and convey it to the brain via sensory neurons (Yang et al., 2017). Hypothalamic TRP channels also play a key role in the temperature perception (Bautista et al., 2007; Wang and Siemens, 2015), with thermosensitive neuron clusters (30 % warm temperature sensitive, 5 % cold temperature sensitive) housed in the pre-optic area (Boulant, 2000). Consistent with this, differential *trpm8* expression was found in the hypothalamus of photostimulated redheaded buntings exposed to two temperatures 16 °C apart (Trivedi et al., 2019).

Secondly, ambient temperature influences the expression of migration-linked genes, namely the adenylate cyclase activating polypeptide 1 (*adcyap1*) and vacuolar protein sorting 13a (*vps13a*) genes, and genes coding for enzymes of the dopamine biosynthesis pathway (the rate limiting tyrosine hydroxylase, *th*; and dopamine decarboxylase, *ddc*; Daubner et al., 2011). The size of *adcyap1* alleles was found associated with *Zugunruhe* in migratory

European blackcaps (*Sylvia atricapilla*; Mueller et al., 2011), but not in migratory Juncos (*Junco hyemalis*; Peterson et al., 2013). Similarly, a single nucleotide polymorphism of *vps13a* gene was found associated with migration directionality of very close genetically related *Vermivora* warbler species with wintering sites located in Central America (golden-winged warbler, *V. chrysoptera*) and South America (blue-winged warbler, *V. cyanoptera*; Toews et al., 2019). Further, the departure from wintering area is closely related to the timely arrival at breeding grounds of migrating birds: males, in particular, tend to have a stronger drive (sexual motivation) during the spring migration (Tryjanowski and Yosef, 2002). A role of dopamine was, therefore, envisaged in the spring migration of blackheaded buntings, as suggested by increased hypothalamic *th* expression in captive redheaded buntings during photostimulated spring migratory, compared to the autumn migratory state (Sharma et al., 2018). Likewise, the association of *drd4* gene (coding for the dopamine receptor D4) with exploratory behavior found in great tits suggested a role of the dopaminergic pathway in the overall migratory movements (Fidler et al., 2007). Furthermore, temporally spaced daily injections of L-DOPA (L-dihydroxyphenylalanine, a dopamine precursor) and 5-HTP (5 hydroxytryptophan, a serotonin precursor) also mimicked photostimulated gonadal response in redheaded buntings (Bhatt and Chaturvedi, 1992).

Third, ambient temperature affects extensive physiological changes that occur in the flight muscle in anticipation of the migratory travel. In the pre-migratory period, the pectoralis muscles grow in size in many migratory birds including dunlins, *Calidris alpina*, sanderlings, *Calidris alba*, semi-palmated sandpipers, *Calidris pusilla*, red knots, *Calidris canutus canutus* and lesser knots, *Calidris canutus rogersi* (Battley and Piersma, 1997; Dietz et al., 1999; Driedzic et al., 1993; Evans et al., 1992). There was a 2-fold seasonal variation in the ratio of upstroke to down-stroke flight muscles, suggesting an adaptation for savings on overall energy expenditure by reduced escape flight ability when in red knots have lower body (pectoral muscle) mass (Piersma and Dietz, 2007; Piersma et al., 2007). Therefore, as an anatomic measure of the muscle growth, we measured the width of flight muscle fibers of buntings exhibiting photostimulated *Zugunruhe*. To assess further if photostimulated muscle hypertrophy was the result of molecular remodeling (Pradhan et al., 2019), we measured muscular expression of 7 genes including testosterone-signaling (T-signaling) pathway genes, and those involved in the muscle growth and metabolism (*ar*, *srd5a3*, *pvalb*, *myod*, *mstn*, *mtor* and *hif1a*). Both T-signaling pathway genes (*ar* and *srd5a3*) showed a significantly increased expression during the pre-migratory period in hypertrophied pectoralis muscle of

the white-crowned sparrows (Pradhan et al., 2019). Gene *srd5a3* encodes for steroid 5 α -reductase mediating the conversion of T into 5 α -DHT (5 α -dihydrotestosterone) that binds to androgen receptors, ARs (Fuxjager et al., 2016), and influences the muscle growth (Dubois et al., 2014; Morton et al., 2018). T-induced activation of ARs in skeletal muscles involves *pvalb* (parvalbumin) and *igf1* (insulin growth factor 1) genes, as reported by a study in golden-collared manakins (*Manacus vitellinus*; Fuxjager et al., 2012). Similarly, the expression of *mstn* (myostatin) gene was increased in photostimulated captive, but not wild, white-throated sparrows (Price et al., 2011). In photostimulated migratory redheaded buntings, temperature affected the expression of myogenic differentiation 1 (*myod1*), which acts as a prime regulator of the muscle growth and metabolism (Sur et al., 2019). Importantly, intensively exercising flight muscles require excessive oxygen while migrants are in flight. Therefore, we also measured the expression of genes coding for mechanistic target of the rapamycin kinase (*mtor*) and hypoxia inducible factor 1 (*hif1a*), which are crucial enzymes for the myocellular adaptation of skeletal muscles to both exercise and hypoxia by maintaining the oxygen delivery and augmented oxygen diffusion capacity (Scott, 2011; Song et al., 2017).

2. Materials and Methods

2.1 Animals and maintenance

This study was done as per approval of the Institutional Animal Ethics Committee of University of Lucknow, India (protocol #: LU/ZOOL/IAEC/5/16/01/2A). Adult male blackheaded buntings (*Emberiza melanocephala*) were procured from overwintering flock in late February, and acclimated for a week to captive conditions in an outdoor aviary (size = 3 x 2.5 x 2.5 m) under semi-natural conditions (photoperiod, sunrise to sunset = ~11.3 h; average daytime temperature 21 - 25 °C). Thereafter, birds were moved indoors and kept in an aviary (size = 2.2 x 1.8 x 2.8 m) under artificial short days (SD: 8 h light: 16 h darkness, 8L: 16D; L = ~200 lux, D < 0.1 lux; Müller SC88 timer controlled light and dark periods) and 22 ± 1°C temperature. Under SD, buntings maintain unstimulated photosensitive state; i.e. they remain responsive to stimulatory effects of long days (Misra et al., 2004; Singh et al., 2015). Food and water were provided *ad libitum*.

2.2 Experiment

Figure 1 describes a schematic outline of the hypothesis conceptualized and protocol used for the present experiment. Photosensitive birds in four groups of 5 each were individually housed in activity cages (size = 60 x 35 x 45 cm; one bird per cage), and placed in separate

wooden photoperiodic boxes (size = 75 × 50 × 70 cm; 1 bird/ cage/ box) providing 8L:16D at 22 ± 1°C, as before. After a week, 2 groups were retained on SD, while the other 2 groups were exposed to 13 h long-day (LD, 13L:11D: L = 200 lux, D < 0.1 lux) by 5 h delayed light-off time each day. Then, under both SD and LD, one group of birds was maintained at 22 ± 1 °C, as before; this temperature was close to average daytime temperature that buntings usually experience at this time of the year. In the other groups under both SD and LD, temperature was raised to 35 ± 1 °C; this was close to the average daytime temperature that buntings experience during the period of late March/ early April, during which they depart from the wintering areas (~25 °N). Here, the two experimental groups are called low- and high- temperature groups. After 3 weeks under SD or after a bird under LD had shown 7 consecutive nights of *Zugunruhe* (hence LD exposure period ranged from 14 to 37 days among 10 birds at two temperatures), birds were sacrificed by decapitation at hour 19 (hour 0 = lights on) of the day. Decapitation was preferred to anesthesia usage to preclude its probable effects on mRNA expression of genes in different tissues (Hamaya et al., 2000; Staib-Lasarezik et al., 2014). Further, we chose hour 19 as the sampling time because (i) it coincided with period of intense nocturnal *Zugunruhe*, and with predicted time of increased mRNA expression of genes involved in the photoperiodic response (Nakao et al., 2008; Majumdar et al., 2014).

2.3 Monitoring of the activity behaviour

We monitored 24-h activity-rest pattern as behavioural response of photostimulated transition from non-migratory to the migratory LHS. For this, each activity cage was furnished with two perches at unequal heights to facilitate perching activity, and mounted with a passive infrared motion sensor (DSC, LC100 PI Digital PIR detector, Canada) to detect movement of the bird in its cage. We used ‘The Chronobiology Kit’ software program from Stanford Software Systems (Stanford, USA) to collect movements in 5-min bins into designated channels of the computerized data-logging system, and to collate and analyze daily activity pattern at the end of the experiment. A 7-day segment of activity record (actogram) was used to statistically analyze differences in activity pattern between treatment groups. For this, we first averaged activity for a defined time over 7 days for each individual, and from this group mean (±SE) activity was calculated. This has been published in several previous publications (e.g. Singh et al., 2010; Sharma et al., 2018).

2.4 Measurement of surface body temperature, body fattening and weight gain, and testes size

At weekly intervals, the surface body temperature and body fattening and weight gain were recorded as indicators of the overall metabolic and migratory state, respectively. The size of left testis was measured, however, at the beginning by unilateral laparotomy (under general anesthesia) and end of the experiment after the bird was sacrificed. These are routine measurements in our laboratory (e.g., Kumar et al., 1991; Singh et al., 2018).

For laparotomy, birds were administered with a mixture of ketamine/ xylazine solution (67.5 mg ketamine + 7.5 mg xylazine per kg body weight). Testes were located through a small incision on the left flank between last two ribs, and dimensions of the left testis were measured to an accuracy of 0.5 mm. From these values, testis volume was calculated using the formula $\frac{4}{3}\pi ab^2$ (a – half of length; b - half of width). The incision was sutured, and applied with an antibacterial skin cream (Soframycin; Aventis Pharma Ltd.). The bird was then returned in its cage on to a warm pad for about half-an-hour (resumption of normal perch hopping in ~1 hour indicated full recovery from the anesthesia effect). We presented change in testis size as function of time (initial vs. final) as testis growth rate (k) which was calculated by using the formula $k = [(\log V_t - \log V_0) / t]$, where V_0 is initial testis volume, and V_t is volume after time 't' in days (Farner and Wilson, 1957).

As a marker of the homeostatic response, the surface body temperature was recorded at hour 4 of the day (hour 0 = light-on) by using a touch-free thermoscan thermometer (Quick shot Infra-red thermometer; model Exp-01B; temperature range: 32 – 42 °C) placed at a distance of ~ 2 cm from exposed keel region of the bird. Each time, we averaged four consecutive readings for each individual.

The body fattening (fat depots in the furcular, scapular and abdominal areas) was assessed using a subjective criterion in a scale of 0–5, where 0 = no visible fat depot, and 5 = heavy fat bulging all over the abdomen, as per the scheme of scoring the subcutaneous fat outlined based on previous studies in passerine migrants (Helms and Durry, 1960; Wingfield and Farner, 1978; Biebach et al., 1986), and routinely used in our laboratory for scoring photostimulated fat deposition in migratory buntings (e.g. see, Malik et al., 2004; Budki et al., 2009). Briefly, the scoring ran as follows: 0 = no visible subcutaneous fat depot, 1 = light fat depots overlying musculature, but musculature remains clearly visible, 2=heavier fat deposits overlying musculature (vasculature still visible), 3 = fat deposits overlies the entire

region, 4 = areas filled with whitish, bulging fat deposits, and 5 = copious fat deposits all over three regions (Budki et al., 2009). For body mass, each bird was weighed by using a tabletop balance to an accuracy of 0.1 g.

2.5 The assessment of muscle growth

We measured from each bird the width of muscle fibers from the pectoral muscle as an anatomic measure of muscle growth in response to *Zugunruhe*, which mimicked migratory activity in the caged situation. For this, a piece of muscle tissue from each bird was sectioned in 10 µm thick cross sections by using Leica 1850 cryostat. Five sections from each bird were stained with hematoxylin and eosin (H-E) stains. Images were captured at the 40x magnification (10 x ocular * 4 x objective) by Nikon DS-Fi2 microscope. In each image, we measured the fiber width at 8 random sites (hence per bird, 40 measurements; 5 sections * 8 sites) by using Nikon NIS-elements BR software program (version 2.3), as described by Chaves et al. (2018).

2.6 Measurement of plasma T levels

In order to assess the effects at peripheral levels, we measured plasma T, which also plays a role in the muscle growth. For this, 150-200 µl blood samples collected from each bird at the end of the experiment were centrifuged at 845 g for 10 min and stored at -20°C. T levels were measured by ELISA using an immunoassay kit from Enzo Life Sciences (Ann Arbor, MI; Cat. no. ADI-900-065), as per manufacturer's protocol. Briefly, 100 µl plasma at 1:20 dilution (10 µl plasma + 10 µl of 1% steroid displacement buffer + 180 µl assay buffer) was aliquoted in 96-well ELISA plate. Then, 50 µl of antibody was added to each well, except those assigned for the testing of no-activity (blank), total activity (TA) and non-specific binding (NSB). After 1 h incubation in an orbital shaker (500 rpm) at the room temperature, 50 µl conjugate (alkaline phosphate conjugated with testosterone) was added to each well, except to the blank and TA wells. After re-incubation at 500 rpm for 1 h at the room temperature, we performed 3 buffer-washes and added first 5 µl conjugate to TA wells and then 200 µl of p-nitrophenyl phosphate in buffer (pNpp) to every other well. The plate was kept at 37°C for 1 h, and then 50 µl of stop-solution was added to stop the reaction. The plate was read at 405 nm on SpectraMax M2e microplate reader (Molecular Devices LLC, USA). The sensitivity and intra-assay variability of the assay were 0.08 ng/ml and 5.7%, respectively.

2.6 Measurement of mRNA expression of candidate genes

We measured by qPCR mRNA expression of candidate genes in the skin, muscle and hypothalamus/ midbrain (excised out from the brain), as per methods standardized and published earlier (Mishra et al., 2018; Sur et al., 2019, Trivedi et al., 2019). To begin with, we measured mRNA expression of temperature sensitive *trpv4* and *trpm8* genes in the skin and hypothalamus to assess their role in relay of the temperature information. We then measured hypothalamic expression of genes implicated in the development of migratory behaviour (*adcyap1*, *vps13a*), and of genes of the dopamine biosynthesis pathway (*ddc*, *th*) to examine if spring migration is linked to the sexual motivation (Sharma et al., 2018). Further, we measured in muscle the mRNA expression of a total of 7 genes (*srd5a3*, *ar*, *myod1*, *pvalb*, *mstn*, *mtor* and *hif1a* genes), which could be associated with muscle growth and excessive oxygen requirement.

For each gene expression assay, we extracted total RNA from the tissue using trizol solution (Ambion, 15596-018), and checked its quality by Nanodrop 2000c; the ratio of 260/280 close 2.0 was accepted as pure RNA. 1 µg RNA aliquot treated with RNase free DNase (Promega, M610A) was reverse transcribed to synthesize cDNA using Revert Aid First Strand cDNA synthesis kit (Thermo Scientific, K1622). We used primer sequences of *trpv4*, *trpm8*, *adcyap1*, *th*, *myod1* and *ar* genes as previously published by Sur et al. (2019) and Trivedi et al. (2019). However, we used degenerate primers and cloned their partial sequence of *vps13a*, *ddc*, *srd5a3*, *pvalb*, *mstn*, *mtor* and *hif1a* genes. The amplified cDNA products were commercially sequenced (Eurofins, Bangalore, India), and subjected to NCBI database BLAST search to ascertain the gene identity. An identified gene sequence was submitted to NCBI GenBank for the accession number (Table S1).

Thereafter, we performed qPCR measurement using gene specific primers, which were designed by using online Primer Quest (<https://eu.idtdna.com/PrimerQuest>). qPCR assays were performed in duplicates using SYBR green chemistry (Applied Biosystems, Life Technology, 4367659) run on ViiA7 real-time PCR system (Applied Biosystems, Foster City, CA, USA). In each PCR plate, we included *beta-actin* as reference control gene, which was found most stable among three potential reference genes (*beta-actin*, *hpri1* and *ppia*) that we had tested in an earlier study (Sharma et al., 2018). The relative mRNA expression of each candidate gene was determined by $\Delta\Delta C_t$ method (Livak and Schmittgen, 2001), as published in several previous bunting studies (Sharma et al., 2018, Sur et al., 2019, Trivedi et al., 2019). The value of cycle threshold (C_t) determined by the fluorescence exceeding the background

(noise) gave ΔCt value (Ct [gene of interest] – Ct [reference gene]). Ct values thus obtained were normalized against Ct value of pooled cDNA from all samples; this gave $\Delta\Delta Ct$ value. The negative value of $\Delta\Delta Ct$ powered to 2 ($2^{-\Delta\Delta Ct}$) was plotted.

2.7 Statistics

IBM SPSS Statistics software (version 20) was used for statistical analyses. Since our data passed the normality test (Shapiro–Wilk’s normality test), we employed the parametric general linear model (GLM) to test. For activity pattern, body mass and surface temperature, we used 3-way repeated measures General Linear Mixed Model (GLMM) test, with temperature as factor 1, LHS as factor 2, and the duration of experiment or time of day as factor 3. However, we used 2-way test for testes (k values), T levels and gene expressions, with temperature and LHS as factors 1 and 2, respectively. We calculated the effect size (partial eta squared, η^2_p) to show the magnitude of increased response as a result of the photoperiod/ temperature treatment. We also performed non-linear Gaussian fit 24-h activity distribution, used F-test to determine differences in the mesor (mean 24 h mRNA expression value) and amplitude (maximum change in mRNA expression levels relative to the mesor) of daily (24-h) rhythm in activity behaviour. Data on fat score were analysed by using the ordinal logistics regression. Student’s unpaired t-test was also used to test differences between two groups at one timepoint. Further, Pearson's correlation coefficient was calculated to show the relationship, if any, between the measures of interest. For significance, alpha was set at 0.05.

3. Results

3.1 Effect of temperature on photostimulated changes in the behaviour and physiology

Daily pattern of activity-rest behaviour

At the beginning of the experiment, irrespective of the photoperiod (SD or LD) and ambient temperature (22 or 35 °C), all birds showed a diurnal pattern in activity-rest behaviour, with activity consolidated during the light-on period. Whereas buntings under SD continued showing for the next 3 weeks almost similar diel activity-rest pattern (akin to activity behaviour during winter non-migratory state), those exposed to LD gradually developed nocturnal *Zugunruhe* (migratory state) albeit with individual differences in time (days) taken to show its first onset (Fig. S1). Thus, there were differences in daily activity behaviour at two levels. First, as revealed by 3-way GLM test, there was a significant effect on 24-h

activity distribution of the LHS ($F = 5.43$, $p < 0.05$, $\eta^2_p = 0.237$), temperature ($F = 4.33$, $p < 0.05$, $\eta^2_p = 0.216$), time-of-day ($F = 10.03$, $p < 0.005$, $\eta^2_p = 0.313$) and LHS x time-of-day interaction ($F = 21.19$, $p < 0.005$, $\eta^2_p = 0.598$) (Fig. 2a-d). In particular, we found a significant difference in activity during the light, but not dark, period, with total activity levels lower at 35°C than 22°C temperature ($p < 0.05$, Student's t-test; (Fig. 2f). There was also temperature-dependent 24-h distribution of activity as shown by significant differences in the mesor (m) and amplitude (a) and mesor values from Gaussian best fit curves under LD (22°C: $a = 14.7 \pm 0.3$; $m = 11.6 \pm 0.3$ h vs. 35°C: $a = 15.6 \pm 0.4$; $m = 17.2 \pm 0.1$ h; $p < 0.0001$), but not under SD (22 °C: $a = 13.5 \pm 0.5$, $m = 1.0 \pm 0.6$ h vs. 35 °C: $a = 13.4 \pm 6.8$, $m = 1.5 \pm 1.0$ h). Second, temperature affected the number of days taken to show the photostimulated *Zugunruhe*; it was significantly advanced at 35°C, compared to 22°C ($p < 0.05$, Student's t-test, $\eta^2_p = 0.627$, Fig. 3a).

Surface body temperature, fat deposition and weight gain

The surface body temperature showed a significant effect of the ambient temperature ($F = 279.05$, $p < 0.0001$, $\eta^2_p = 0.822$) and experiment duration ($F = 11.31$, $p < 0.005$, $\eta^2_p = 0.411$), and of the interaction of experiment duration with temperature ($F = 20.73$, $p < 0.005$, $\eta^2_p = 0.627$) as well as LHS ($F = 3.60$, $p < 0.05$, $\eta^2_p = 0.218$, GLM test, Fig. 3b). Similarly, measured as indices of the photostimulated phenotypic characteristics of migratory state, weekly changes in both fat score and body mass showed significant differences between SD and LD LHSs. In particular, there was a significant effect of the LHS ($\chi^2 = 14.97$, $p < 0.005$, $\eta^2_p = 0.372$) and experiment duration ($\chi^2 = 14.61$, $p < 0.005$, $\eta^2_p = 0.294$) on fat score, and of the LHS ($F = 18.48$, $p < 0.005$, $\eta^2_p = 0.447$), experiment duration ($F = 9.10$, $p < 0.005$, $\eta^2_p = 0.303$) and LHS x experiment duration interaction ($F = 15.28$, $p < 0.005$, $\eta^2_p = 0.359$) on body mass of blackheaded buntings (GLM test; Fig. S2). However, there was no difference in the photostimulated body fattening and weight gain between two temperature groups (Fig. S2)

Testes, plasma T and muscle growth

At both temperatures, testes recrudesced during LD, but not SD, exposure. There was a significant effect of the LHS ($F = 27.29$, $p < 0.005$, $\eta^2_p = 0.725$, Fig. 3c) on testicular growth rate (k), but of both LHS ($F = 56.49$, $p < 0.0001$, $\eta^2_p = 0.899$ GLM) and temperature ($F = 12.24$, $p < 0.005$, $\eta^2_p = 0.690$) on plasma T levels (GLM test, Fig. 3d). We found a significant effect on muscle fiber width of the temperature ($F = 7.35$, $p < 0.05$, $\eta^2_p = 0.276$), LHS ($F =$

96.56, $p < 0.0001$, $\eta^2_p = 0.852$) and temperature x LHS interaction ($F = 8.90$, $p < 0.05$, $\eta^2_p = 0.395$) on muscle growth (GLM test, Fig. 4).

3.2 Effect of temperature on photostimulated changes in gene expression

Temperature responsive genes

We measured mRNA expression of *trpv4* and *trpm8* genes to assess temperature effects at both body surface (skin) and central (hypothalamus) levels. These genes differentially responded to photoperiod and temperature treatments (Fig. 5). In skin, we found a significant effect of the temperature and LHS on *trpv4* ($F = 8.06$, $p < 0.05$, $\eta^2_p = 0.381$) and *trpm8* ($F = 6.38$, $p < 0.05$, $\eta^2_p = 0.352$) mRNA expressions, respectively (GLM test; Fig. 5a, b). In the hypothalamus, on the other hand, there was a significant effect of the LHS ($F = 12.37$, $p < 0.005$, $\eta^2_p = 0.452$) and LHS x temperature interaction ($F = 6.63$, $p < 0.05$, $\eta^2_p = 0.307$) on *trpv4*, and of LHS alone ($F = 6.10$, $p < 0.05$, $\eta^2_p = 0.306$) on *trpm8* mRNA expression (GLM test; Fig. 5c, d).

Migration-linked genes

We measured mRNA expression of *adcyap1* and *vps13a* genes to examine if they were associated with the development of *Zugunruhe* (migratory state). There was no significant effect of temperature, LHS or temperature x LHS interaction on hypothalamic expression of both *adcyap1* and *vps13a* genes (Fig. 6a, b). In both hypothalamus and midbrain regions, we found a significant effect of the LHS (hypothalamus: $F = 23.47$, $p < 0.005$, $\eta^2_p = 0.610$; midbrain: $F = 22.60$, $p < 0.0001$, $\eta^2_p = 0.601$) and temperature x LHS interaction (hypothalamus: $F = 7.38$, $p < 0.05$, $\eta^2_p = 0.330$; midbrain: $F = 5.39$, $p < 0.05$, $\eta^2_p = 0.265$) on *th*, but not *ddc*, mRNA expression (GLM test; Fig. 6c-f).

Genes linked to muscle growth and oxygen supply

We found a significant effect of the LHS on *srd5a3* ($F = 39.79$, $p < 0.0001$, $\eta^2_p = 0.712$, GLM test; Fig. 7a), but of both LHS ($F = 45.04$, $p < 0.0001$, $\eta^2_p = 0.747$, GLM) and temperature on *ar* gene expression ($F = 6.25$, $p < 0.05$, $\eta^2_p = 0.295$, GLM test; Fig. 7b). The mRNA levels of both *srd5a3* and *ar* genes were significantly higher in LD migratory than the SD non-migratory LHS ($p < 0.05$, Student's t-test, Fig. 7a, b). We further assessed the effect of temperature on photostimulated expression of *myod1*, *mstn*, *pvalb* and *mtor* genes involved in the muscle growth, and of *hif1a* gene involved in hypoxia-induced pathways. There was a significant effect of the LHS on muscular expression of both *myod1* ($F = 20.48$, $p < 0.005$,

$\eta^2_p = 0.575$) and *mstn* ($F = 98.30$, $p < 0.0001$, $\eta^2_p = 0.860$) genes (GLM test, Fig. 7c, d). However, there was a significant effect of both LHS and temperature on *pvalb* (LHS: $F = 6.57$, $p < 0.05$, $\eta^2_p = 0.419$; temperature: $F = 5.33$, $p < 0.05$, $\eta^2_p = 0.416$), *mtor* (LHS: $F = 14.09$, $p < 0.005$, $\eta^2_p = 0.529$; temperature: $F = 5.39$, $p < 0.05$, $\eta^2_p = 0.251$) and *hif1a* (LHS: $F = 6.07$, $p < 0.05$, $\eta^2_p = 0.294$; temperature: $F = 6.31$, $p < 0.05$, $\eta^2_p = 0.298$) gene expressions (GLM test; Fig. 7 e-g).

Then, we drew correlation by using Pearson's correlation coefficient to show the relationship of T levels with mRNA expression of T-signaling pathway genes (*ar*, *srd5a3*), and of the latter (*ar* and *srd5a3*) with muscle growth genes (*pvalb*, *mtor*). There was a significant positive correlation of T levels with *ar* ($r = 0.72$, $p = 0.0003$), *srd5a3* ($r = 0.81$, $p < 0.0001$), *pvalb* ($r = 0.45$, $p = 0.04$) and *mtor* ($r = 0.56$, $p = 0.009$) mRNA expressions (Fig. 8a, b). Similarly, we found a positive correlation of both *ar* and *srd5a3* with *pvalb* (*ar*: $r = 0.60$, $p = 0.004$, *srd5a3*: $r = 0.44$, $p = 0.04$) and *mtor* (*ar*: $r = 0.74$, $p = 0.0002$, *srd5a3*: $r = 0.69$, $p = 0.0006$) gene expressions (Fig. 8c, d).

4. Discussion

The ambient temperature played a crucial role in the departure decision of spring migrants from wintering areas. This is suggested by temperature-dependent physiological and molecular effects on multiple target tissues (skin, hypothalamus and mid brain, and flight muscles) associated with migration in blackheaded buntings. The ambient temperature seems to be perceived by both peripheral (skin) and central (hypothalamus) TRP channels (temperature sensors), and affect multiple transcriptional pathways regulating photoperiod-induced development of the spring migratory state in blackheaded buntings.

Changes in migratory behaviour and physiology

There were differences in the overall 24-h activity behaviour in LD migratory state between 22- and 35 °C temperature groups, with the advancement of *Zugunruhe* onset (akin to nocturnal flight) by ~10 days at 35 °C. We interpret that the overall dampened 24-h activity at 35°C, similar to previously reported decrease in activity at high temperature in this species and white-throated sparrows (Berchtold et al., 2017, Singh et al., 2012), was an adaptive behavioral response to a warmer climate; a reduced muscular activity will reduce body heat generation (Hafez, 1964; Chaffee and Roberts, 1971). Perhaps, the thermoregulation was activated in buntings at 35 °C, since surface body temperature of these birds was significantly

higher than of those at 22 °C. Intriguingly, although similar to other migratory species (Tryjanowski et al., 2002; Usui et al., 2017; Sur et al., 2019; Trivedi et al., 2019), an early *Zugunruhe* onset at 35 °C is inconsistent with previously reported delayed photostimulated onset of *Zugunruhe* at 40 °C, compared to 27 °C, in blackheaded buntings (Singh et al., 2012). We believe that the difference between two studies is because of the difference in both ‘low’ and ‘high’ temperatures that were used. We speculate that in the study of Singh et al. (2012), 27 °C was close to while 40 °C was much above the favorable temperature for migratory departure of buntings from wintering areas. Notably, both field and laboratory (semi-natural environment) studies suggest the start of spring migration of blackheaded buntings during the period from the last week of March to first half of April when daytime temperature at the overwintering sites (25 - 27 °N) usually varies from 30-35 °C (Ali and Ripley, 1999; Gupta and Kumar, 2013).

Photostimulated testicular growth in LD migratory state reinforced the observations from field studies in several migratory species that gonads recrudescence and secrete hormones over the course of spring migration (Fry et al., 1972; Silverin, 1975; Bauchinger et al., 2005). However, as in white-crowned sparrows (*Zonotrichia leucophrys pugetensis*; Wingfield et al., 1997) and European starlings (*Sturnus vulgaris*; Dawson, 2005), the lack of temperature effects on testicular growth in buntings is consistent with the idea that spring migratory and immediately following breeding state are separate, albeit overlapping, photoperiod-induced seasonal events (Misra et al., 2004; Kumar et al., 2006). Despite no-effect on testes, plasma T levels were significantly higher at 35 °C in photostimulated buntings, which also showed early *Zugunruhe* onsets. We suggest that elevated T levels facilitated an early departure of males from the wintering areas so that they were in an advanced breeding state when arrived at the breeding ground and immediately initiated the reproductive activities (Wingfield et al., 1990, 2001; Ketterson et al., 1999; Tonra et al., 2011). Intriguingly, we also found elevated T levels at 35 °C in the SD non-migratory state, indicating probably an activated T secretion at the temperature, which was close to favorable departure temperature. This suggests that T facilitates *Zugunruhe* if birds are exposed to a stimulatory photoperiod. Differential roles of testes (possibly T secretion) were found in male redheaded buntings during the development of spring and autumn migratory states when birds showed recrudescence and regressed testes, respectively (Sharma et al., 2020).

Change in functional gene expressions

Present results showed that the ambient temperature affected molecular underpinnings of the physiological pathways during photostimulated development of the spring migrant phenotype in blackheaded buntings. Clearly, temperature was perceived at both peripheral and central levels, and influenced molecular processes at multiple levels culminating into the spring migratory phenotype.

Gene expression in skin and hypothalamus

Three main conclusions seem to have emerged. First, TRP channels were involved in relaying the temperature information. We suggest that skin TRPV4 channels acted as the peripheral sensor and conveyed temperature information to the brain where it influenced the regulatory processes (Kobayashi, 2015). This is evidenced by an upregulated expression at 35 °C of the warm-sensitive *trpv4* gene in the skin, irrespective of the LHS, but in the hypothalamus of birds exhibiting the LD-induced migratory phenotype. On the other hand, *trpm8* expression showed an LHS-induced effect, as there were parallel changes (upregulated) in mRNA levels in both skin and hypothalamus of birds under long days at 35 °C.

Second, the concurrent increased expression of genes coding for TRP channels and tyrosine hydroxylase (TH, rate limiting enzyme of dopamine synthesis) at 35°C in LD migratory state suggested a functional interaction of the hypothalamic thermosensitive and dopaminergic neurons (Cronin and Baker, 1977; Heimovics and Ritters, 2008; Miller and Lonstein, 2009; Wang and Siemens, 2015). The temperature effect on *f th*, but not *ddc*, expression further suggested that from functional viewpoint, TH-mediated step of dopamine biosynthesis was probably crucial for spring migration which indeed is purposed with a strong sexual motivation (Tryjanowski and Yosef, 2002). The linkage of *th* mRNA expression with photostimulated spring migratory state has also been suggested in migratory redheaded buntings (Sharma et al., 2018).

Third, both *adcyap1* and *vps13a* genes were not involved in photoperiodic induction of the spring migratory state in blackheaded buntings. This is not surprising since apart from species variations, the suggested role of *adcyap1* and *vps13a* genes in migration is in the different context. For example, it was the size of 3' untranslated region (UTR) of *adcyap1*, not its expression levels, which influenced migratory behaviour of European blackcaps (Mueller et al., 2011), but not of Juncos (Peterson et al., 2013). Likewise, *vps13a* gene expression was found associated with directionality of migration, not with development of the migratory state, between golden-winged and blue-winged warbler preparing to migrate from their wintering areas in Central and South America, respectively (Toews et al., 2019). A seemingly

higher *adcyp1* mRNA levels under LD at 35 °C, compared to 22 °C, is perhaps consistent with the overall increased 24-h activity in these birds.

Gene expression in flight muscles

Temperature-effects on migratory behaviour (24-h activity-rest pattern and nocturnal *Zugunruhe*) were accompanied with anatomical (= physiological) changes in the flight muscle. And, as expected with an early *Zugunruhe* onset, the muscle fibres were enlarged in photostimulated buntings at 35 °C. This corroborated the changes as required in both physiological and molecular gears of muscles to meet ‘workloads’ of the migratory flight. Hypertrophied muscles show added strength (endurance) and enhanced molecular metabolic plasticity, which birds necessarily need during the migration (Bauchinger and Biebach, 2006; Price et al., 2011).

We suggest that activated T-signaling pathway was an adaptive physiological response of muscles to support more intense spring migratory flight. This was evidenced by upregulated expression of *srd5a3* and *ar* genes in parallel with circulating levels of T in photostimulated buntings, consistent with findings in white-crowned sparrows prior to their migratory departure (Pradhan et al., 2019). Both plasma T and hypothalamic *ar* mRNA levels were higher at 35 °C than 22 °C, corroborating the idea that elevated T facilitated an earlier onset of *Zugunruhe* in buntings at 35 °C. Apart from its effect on muscles via its own AR receptors, T-effects on muscle growth and strength involved the activation of the biosynthesis of PVALB and MTOR proteins encoded by *pvalb* and *mtor* genes, respectively. The positive correlations of both *pvalb* and *mtor* mRNA levels with plasma T levels, and with *ar* and *srd5a3* mRNA levels support this. A study on golden-collared manakins also showed T-effects on *pvalb* expression (Fuxjager et al., 2012). Perhaps, Ca²⁺ binding PVALB protein hastened the relaxation, hence enhanced contractility of the skeletal (flight) muscles (Fuxjager et al., 2012, Heizmann et al., 1982). We suggest a similar T-induced effect on MTOR protein, which is involved in the muscular hypertrophy (Wu et al., 2010; Basualto-Alarcón et al., 2013).

Temperature did not affect the genes involved in the muscle growth; both *myod1* and *mstn* expressions were upregulated in the photostimulated migratory state, irrespective of the temperature. Increased *myod1* mRNA expression, in particular, suggested enhanced synthesis of MYOD protein, which plays a crucial role in the myogenesis (muscle growth) and muscle metabolism via affecting the mitochondrial biogenesis, fatty acid oxidation, and electron transport chain reaction (Shintaku et al., 2016). At the same time, although similar to white-

throated sparrows (Price et al., 2011), elevated *mstn* mRNA expression in photostimulated buntings is inconsistent with the idea of enhanced muscle biogenesis, since MSTN is inhibitory to muscle growth. We interpret that MSTN levels counterbalance muscle growth during the period of intense muscular activity when birds in flight need to maintain their body mass.

Further, muscular expression of *hif1a* was consistent with the overall physiological adaptation to support an enhanced aerobic exercise during the migration. Elevated *hif1a* mRNA levels at 35°C in buntings exhibiting LD-induced migratory state evidence this. Perhaps, *hif1a*- encoded HIF1 protein augments oxygen diffusion in the flight muscle (Scott, 2011). This, in turn, facilitates more intense and longer migratory flights when birds require enhanced oxygen supply but might be faced with a relatively lower atmospheric oxygen level while flying at higher altitudes.

We propose a functional interaction of the thermosensitive neurons with dopaminergic neurons in the hypothalamus. Downstream, the temperature-induced T-signaling pathway, in particular *ar* and *srd5a3* genes, affected both growth and activity of the flight muscle, which is an effector tissue directly involved with the migration. This pathway caused changes in the mRNA expression of a host of genes (e.g. *pvalb*, *mtor*, *myod1*, *mstn* and *hif1a*) and enhanced both muscle power and endurance in photostimulated birds. We suggest this as a significant component mechanism of the overall adaptive strategy in latitudinal avian migrants for timely departure from the wintering areas in spring.

Finally, our results support the hypothesis that one of the several factors in the environment songbirds use when making a behavioral decision to depart from wintering areas is temperature (Berchtold et al., 2017). This is, in particular, demonstrated by temperature effects on multiple targets gene expressions related to the development of photostimulated migratory phenotype. Although this cannot be known from this study, we speculate that songbirds use for departure from wintering areas during spring a temporal window of the favorable temperature. A sudden rise above the favorable temperature range might adversely affect (delay) the departure time since birds need to get engaged more actively in the thermoregulation. It might be an interesting idea for future investigations if there was indeed a critical narrow temperature range for migratory departure, similar to the widely demonstrated critical day length for the photoperiodic seasonal response in migratory buntings (e.g. body fattening and gonadal growth; Kumar, 1997; Misra et al., 2004; Gupta and Kumar, 2013; Majumdar et al., 2015).

Conflict of interest: The authors declare no conflict of interest.

Funding: Funds were provided through a major research grant (BT/PR4984/MED/30/752/2012) from the Department of Biotechnology, New Delhi, to VK and SR. The experimental facility was built under the IRHPA grant support (IR/SO/LU-2005) from the Department of Science and Technology and SERB. SS and AS received research fellowships from the Council of Scientific and Industrial Research, New Delhi.

Data availability: Data will be made available from the corresponding author on request.

Authors' contribution: VK: Conceived the idea; SS, KC, SM and SR: Experiment - monitoring of behaviour and collecting samples; SS and AS: qPCR assays; SS, AS and VK: Analyses and preparation of figures; VK and SS: Wrote paper; VK, SS and AS: Review and editing; VK, SS and AS: Revision; SR: Animal resource and logistics for the experiment, and supervision; VK: funding and resources for all assays. All authors gave the final approval for publication and agree to be held accountable for the work performed.

References

- Ali, S. and Ripley, S.D.** (1999). *Handbook of the Birds of India and Pakistan. Volume 10 (2nd ed.)*. New Delhi: Oxford University Press.
- Basualto-Alarcon, C., Jorquera, G., Altamirano, F., Jaimovich, E. and Estrada, M.** (2013). Testosterone signals through mTOR and androgen receptor to induce muscle hypertrophy. *Med. Sci. Sports. Exerc.* **45(9)**, 1712–1720.
- Battley, P.F. and Piersma, T.** (1997). Body composition of Lesser Knots (*Calidris canutus rogersi*) preparing to take off on migration from northern New Zealand. *Notornis.* **44**, 137-150.
- Bauchinger, U. and Biebach, H.** (2006). Transition between moult and migration in a long-distance migratory passerine: Organ flexibility in the African wintering area. *J. Ornithol.* **147(2)**, 266-273.
- Bauchinger, U., Wohlmann, A. and Biebach, H.** (2005). Flexible remodeling of organ size during spring migration of the garden warbler (*Sylvia borin*). *Zoology.* **108**, 97–106.
- Bautista, D.M., Siemens, J., Glazer, J.M., Tsuruda, P.R., Basbaum, A.I. and Cheryl, L.S.** (2007). The menthol receptor TRPM8 is the principal detector of environmental cold. *Nature* **448**, 204–208.
- Berchtold, A., Nightingale, I., Vandermeer, C. and MacDougall-Shackleton, S.A.** (2017). Experimental temperature manipulations alter songbird autumnal nocturnal migratory restlessness. *Anim. Migr.* **4**, 1.
- Berthold, P. and Querner, U.** (1988). Was Zugunruhe wirklich ist: Eine quantitative Bestimmung mit Hilfe von Video-Aufnahmen bei Infrarotbeleuchtung. *J. Ornithol.* **129**, 372–375.
- Biebach, H., Friedrich, W. and Heine, G.** (1986). Interaction of body mass, fat, foraging and stopover period in trans-Sahara migrating passerine birds. *Oecologia* **69**, 370–379.
- Bhatt, R. and Chaturvedi, C.M.** (1992). The effects of combined serotonin and dopamine precursor application during testicular photosensitivity vs photofractoriness of the Red headed bunting, *Emberiza bruniceps*. *J. Interdiscipl. Cycle Res.* **23(2)**, 120-127.

- Both, C. and Visser, M. E.** (2001). Adjustment to climate change is constrained by arrival date in a long-distance migrant bird. *Nature*. **411**, 296–298.
- Boulant, J.A.** (2000). Role of the preoptic-anterior hypothalamus in thermoregulation and fever. *Clin. Infect. Dis.* **31**, S157–S161.
- Bradshaw, W.E. and Holzapfel, C.M.** (2007). Evolution of animal photoperiodism. *Ann. Rev. Ecol. Evol. Syst.* **38**, 1–25.
- Budki, P., Rani, S. and Kumar, V.** (2009). Food deprivation during photosensitive and photorefractory life history stages affects reproductive cycle in the migratory redheaded bunting (*Emberiza bruniceps*). *J. Exp. Biol.* **212**, 225–230.
- Cassone, V.M. and Yoshimura, T.** (2015). Circannual cycles and photoperiodism. In: Scanes CG, ed. *Sturkie's Avian Physiology*. New York, NY: Springer-Verlag, 829-844.
- Chaffee, R.R.J. and Roberts, J.C.** (1971). Temperature acclimation in birds and mammals. *Ann. Rev. Physiol.* **33**, 155- 202.
- Chaves, F.Q., Nailson, A.N.J., Roberta, C.R., Helder, F.P.A. and Ricardo R.G.** (2018). Morphometry of pectoral muscle fiber and intestinal villi of *Calidris pusilla* during the wintering period in Brazil. *Pesq. Vet. Bras.* **38(9)**, 1849-1855.
- Cronin, M.J. and Baker, M.A.** (1977). Thermosensitive midbrain neurons in the cat. *Brain. Res.* **128**, 461-72.
- Daubner, S.C., Le, T. and Wang, S.** (2011). Tyrosine hydroxylase and regulation of dopamine synthesis. *Arch. Biochem. Biophys.* **508**, 1– 12.
- Dawson, A.** (2005). The effect of temperature on photoperiodically regulated gonadal maturation, regression and moult in starlings – potential consequences of climate change. *Funct. Ecol.* **19**, 995–1000.
- Dietz, M.W., Piersma, T. and Dekinga, A.** (1999). Body-building without power training: endogenously regulated pectoral muscle hypertrophy in confined shorebirds. *J. Exp. Biol.* **202**, 2831–2837.
- Driedzic, W.R., Crowe, H.L., Hicklin, P.W. and Sephton, D.H.** (1993). Adaptations in pectoralis muscle, heart mass, and energy metabolism during premigratory fattening in semipalmated sandpipers (*Calidris pusilla*). *Can. J. Zool.* **71**, 1602-1608.

- Dubois, V., Laurent, M.R. and Sinnesael M. et al.** (2014). A satellite cell-specific knockout of the androgen receptor reveals myostatin as a direct androgen target in skeletal muscle. *FASEB J.* **28**, 2979–2994.
- Evans, P.R., Davidson, N.C., Uttley, J.D. and Evans, R.D.** (1992). Premigratory hypertrophy of flight muscles: an ultrastructural study. *Ornis. Scand.* **23**, 238-243.
- Farner, D.S. and Wilson, A.C.** (1957). A quantitative examination of testicular growth in the white-crowned sparrow. *Biol. Bull.* **113**, 254–267.
- Fidler, A.E., Van Oers, K., Drent, P.J., Kuhn, S., Mueller, J.C. and Kempenaers, B.** (2007). *Drd4* gene polymorphisms are associated with personality variation in a passerine bird. *Proc. Royal Soc. B.* **274**, 1685–1691.
- Fry, C.H., Ferguson-Lees, I.J. and Dowsett, R.J.** (1972). Flight muscle hypertrophy and ecophysiological variation of yellow wagtail races at Lake Chad. *J. Zool. Land.* **167**, 293-306.
- Fuxjager, M.J., Barske, J., Du, S., Day, L. and Schlinger, B.A.** (2012). Androgens regulate gene expression in avian skeletal muscles. *PLoS One.* **7**, e51482.
- Fuxjager, M.J., Lee, J., Chan, T., Bahn, J., Chew, J., Xiao, X. and Schlinger, B.A.** (2016). Hormones, genes and athleticism: effect of androgens on the avian muscular transcriptome. *Molecular Endocrinology.* **30**, 254-271.
- Gupta, N. J. and Kumar, V.** (2013). Testes play a role in termination but not in initiation of the spring migration in the night-migratory blackheaded bunting. *Anim. Biol.* **63**, 321–329.
- Hafez, E.S.E.** (1964). Behavioral thermoregulation in mammals and birds. *Int. J. Biometeorology.* **7**, 231-240.
- Hamaya, Y., Takeda, T., Dohi, S., Nakashima, S. and Nozawa, Y.** (2000). The effects of pentobarbital, isoflurane, and propofol on immediate early gene expression in the vital organs of the rat. *Anesth. Analg.* **90(5)**, 1177–1183.
- Heimovics, S.A. and Riters, L.V.** (2008). Evidence that dopamine within motivation and song control brain regions regulates birdsong context dependently. *Physiol. Behav.* **95**, 258–266.

- Heizmann, C.W., Berchtold, M.W. and Rowlerson, A.M.** (1982). Correlation of parvalbumin concentration with relaxation speed in mammalian muscles. *Proc. Natl. Acad. Sci. USA.* **79**, 7243–7247.
- Helm, B., Visser, M.E., Schwartz, W., Kronfeld-Schor, N., Gerkema, M., Piersma, T. and Bloch, G.** (2017). Two sides of a coin: ecological and chronobiological perspectives of timing in the wild. *Phil. Trans. R. Soc. B.* **372**, 20160246. (doi:10.1098/rstb.2016.0246).
- Helms, C.W. and Drury, W.H.Jr** (1960). Winter and migratory weight and fat field studies on some North American buntings, *Bird-Banding* **31**, 1-40.
- Jonzén, N., A. Lindén, T. Ergon, E. Knudsen, J.O. Vik, D. Rubolini, D. Piacentini, C. Brinch, et al.** 2006. Rapid advance of spring arrival dates in long-distance migratory birds. *Science* **312**, 1959–1961.
- Karagicheva, J., Rakhimberdiev, E., Dekinga, A., Brugge, M., Koolhaas, A., ten Horn, J. and Piersma, T.** (2016). Seasonal time keeping in a long- distance migrating shorebird. *Journal of Biological Rhythms.* **31**, 509–521. <https://doi.org/10.1177/0748730416655929>
- Karagicheva, J., Rakhimberdiev, E., Saveliev, A. and Piersma, T.** (2018). Annual chronotypes functionally link life histories and life cycles in birds. *Functional Ecology.* **32**, 2369–2379. <https://doi.org/10.1111/1365-2435.13181>
- Ketterson, E.D. and Nolan, V.** (1999). Adaptation, exaptation, and constraint: a hormonal perspective. *Am. Nat.* **154**, S4–S25.
- Kobayashi, S.** (2015). Temperature receptors in cutaneous nerve endings are thermostat molecules that induce thermoregulatory behaviors against thermal load. *Temp. (Austin, Tex.)* **2**, 346–351.
- Kullberg, C., Fransson, T., Hedlund, J., Jonzén, N., Langvall, O., Nilsson, J. and Bolmgren, K.** (2015). Change in spring arrival of migratory birds under an era of climate change, Swedish data from the last 140 years. *Ambio* **44(Suppl 1)**, 69-77.
- Kumar, V.** (1997). Photoperiodism in higher vertebrates: An adaptive strategy in temporal environment. *Indian J. Exp. Biol.* **35**, 427–437.

- Kumar, V., Kumar, B.S., Singh, B.P. and Sarkar, A.** (1991). A common functional basis for the photoperiodic mechanism regulating reproductive and metabolic responses in the migratory redheaded bunting. *Period. Biol.* **93**, 169-174.
- Kumar, V., Rani, S. and Singh, B.P.** (2006). Biological clocks help reduce the physiological conflicts in avian migrants. *J. Ornithol.* **147**, 281-286.
- Kumar, V., Wingfield, J. C., Dawson, A., Ramenofsky, M., Rani, S. and Bartell, P.** (2010). Biological clocks and regulation of seasonal reproduction and migration in birds. *Physiol. Biochem. Zool.* **83**, 827–835.
- Livak, K.J. and Schmittgen, T.D.** (2001). Analysis of relative gene expression data using real-time quantitative PCR and the 2(-Delta Delta C(T)) Method. *Methods.* **25**, 402–408.
- Majumdar, G., Rani, S. and Kumar, V.** (2015). Hypothalamic gene switches control transitions between seasonal life history states in a night-migratory photoperiodic songbird. *Mol. Cell. Endocrinol.* **399**, 110–121.
- Majumdar, G., Yadav, G., Rani, S. and Kumar, V.** (2014). A photoperiodic molecular response in migratory redheaded bunting exposed to a single long day. *Gen. Comp. Endocrinol.* **204**, 104–113.
- Malik, S., Rani, S., and Kumar, V.** (2004). Wavelength dependency of light induced effects on photoperiodic clock in the migratory blackheaded bunting (*Emberiza melanocephala*). *Chronobiol. Int.* **21**, 367-384.
- Miller, S.M. and Lonstein, J. S.** (2009) Dopaminergic projections to the medial preoptic area of postpartum rats. *Neuroscience.* **159**, 1384–1396.
- Mishra, I., Singh, D. and Kumar, V.** (2018). Temporal expression of c-fos and genes coding for neuropeptides and enzymes of amino acid and amine neurotransmitter biosynthesis in retina, pineal and hypothalamus of a migratory songbird: evidence for circadian rhythm dependent seasonal responses. *Neuroscience.* **371**, 309–324.
- Misra, M., Rani, S., Singh, S. and Kumar, V.** (2004). Regulation of seasonality in the migratory male blackheaded bunting (*Emberiza melanocephala*). *Reprod. Nutr. Dev.* **44**, 341–352.

- Morton, R.W., Sato, K. and Gallagher, M.P.B. et al.** (2018). Muscle androgen receptor content but not systemic hormones is associated with resistance training-induced skeletal muscle hypertrophy in healthy, young men. *Front. Physiol.* **9**, 1373.
- Mueller, J.C., Pulido, F. and Kempnaers, B.** (2011). Identification of a gene associated with avian migratory behaviour. *Proc. Royal Soc. B.* **278**, 2848–2856.
- Nakao, N., Ono, H., Yamamura, T., Anraku, T., Takagi, T. and Higashi, K.** (2008). Thyrotrophin in the pars tuberalis triggers photoperiodic response. *Nature* **452**, 317–322.
- Newton I.** (2008) The migration ecology of birds, Academic Press, London, pp. 984
- Palm, V., Leito, A., Truu, J. and Tomingas, O.** (2009). The spring timing of arrival of migratory birds: dependence on climate variables and migration route. *Ornis Fenn.* **86**, 97-108.
- Peterson, M.P., Abolins-Abols, M. and Atwell, J.W. et al.** (2013). Variation in candidate genes CLOCK and ADCYAP1 does not consistently predict differences in migratory behavior in the songbird genus Junco. *F. Research.* **2**, 115.
- Piersma, T. and Dietz, M.W.** (2007). Twofold seasonal variation in the supposedly constant, species-specific, ratio of upstroke to downstroke flight muscles in Red Knots *Calidris canutus*. *J. Avian Biol.* **35**, 536–540.
- Piersma, T., Hedenström, A. and Brugge, M.** (2007). Intraspecific variation in avian pectoral muscle mass: constraints on maintaining manoeuvrability with increasing body mass. *Funct. Ecol.* **21**, 317-326.
- Pradhan, D.S., Ma, C., Schlinger, B.A., Soma, K.K. and Ramenofsky, M.** (2019). Preparing to migrate: expression of androgen signaling molecules and insulin-like growth factor-1 in skeletal muscles of Gambel's white-crowned sparrows. *J. Comp. Physiol. A.* **205**, 113-123.
- Price, E.R., Bauchinger, U., Zajac, D.M., Cerasale, D.J. and McFarlan J.T. et al.** (2011). Migration- and exercise-induced changes to flight muscle size in migratory birds and association with IGF1 and myostatin mRNA expression. *J. Exp. Biol.* **214**, 2823–2831.
- Ramenofsky, M. and Wingfield, J.C.** (2007). Regulation of migration. *Bioscience.* **57**, 135–143.

- Rani, S., Malik, S., Trivedi, A. K., Singh, S. and Kumar, V.** (2006). A circadian clock regulates migratory restlessness in the blackheaded bunting (*Emberiza melanocephala*). *Current. Sci.* **91**, 1093-1095.
- Scott, G.R.** (2011) Elevated performance: the unique physiology of birds that fly at high altitude. *J. Exp. Biol.* **214**, 2455-2462.
- Sharma, A., Singh, D., Malik, S., Gupta, N.J., Rani, S. and Kumar, V.** (2018). Difference in control between spring and autumn migration in birds: insights from seasonal changes in hypothalamic gene expression in captive buntings. *Proc. R. Soc. B.* **285**, 20181531.
- Sharma, A., Das, S., Komal, R., Malik, S., Rani, S. and Kumar, V.** (2020). Seasonal reproductive state determines gene expression in the hypothalamus of a latitudinal migratory songbird during the spring and autumn migration. *Mol. Cell. Endocrinol.* **508**, 110794.
- Shintaku, J., Peterson, J.M., Talbert, E.E., Gu, J.M., Ladner, K.J., Williams, D.R., Mousavi, K., Wang, R., Sartorelli, V. and Guttridge, D.C.** (2016). MyoD regulates skeletal muscle oxidative metabolism cooperatively with alternative NF- κ B. *Cell Rep.* **17**, 514–526.
- Silverin, B.** (1975). Reproductive organs and breeding behaviour of the male pied flycatcher *Ficedula hypoleuca* (Pallas). *Ornis. Scand.* **6**, 15-26.
- Silverin, B., Wingfield, J., Stokkan, K., Massa, R., Järvinen, A. and Andersson, N.** (2008). Ambient temperature effects on photo induced gonadal cycles and hormonal secretion patterns in great tits from three different breeding latitudes. *Horm. Behav.* **54**, 60–68.
- Singh, D., Swarup, V., Le, H. and Kumar V.** (2018) Transcriptional signatures in liver reveal metabolic adaptations to seasons in migratory blackheaded buntings. *Front. Physiol.* **9**.
- Singh, D., Trivedi, A.K., Rani, S., Panda, S. and Kumar, V.** (2015). Circadian timing in central and peripheral tissues in a migratory songbird: dependence on annual life-history states. *FASEB J.* **29**, 4248–4255.

- Singh, J., Budki, P., Rani, S. and Kumar, V.** (2012). Temperature alters the photoperiodically controlled phenologies linked with migration and reproduction in a night-migratory songbird. *Proc. Biol. Sci.* **279**, 509–515.
- Singh, J., Rani, S. and Kumar, V.** (2010). Presence of a conspecific renders survival advantages in the migratory redheaded bunting: test through the effects of restricted feeding on circadian response and survivorship. *Chronobiol. Int.* **27**, 111–127.
- Song, J., Sundar, K., Gangaraju, R. and Prchal, J.T.** (2017). Regulation of erythropoiesis after normoxic return from chronic sustained and intermittent hypoxia. *J. Appl. Physiol.* **123**, 1671-1675.
- Staib-Lasarezik, I., Kriego, O., Timaru-Kast, R., Pieter, D., Werner, C., Engelhard, K. and Thal, S.C.** (2014). Anesthesia for euthanasia influences mRNA expression in healthy mice and after traumatic brain injury. *J. Neurotrauma.* **31**, 1664–1671.
- Sur, S., Sharma, A., Trivedi, A.K., Bhardwaj, S.K. and Kumar, V.** (2019) Temperature affects liver and muscle metabolism in photostimulated migratory redheaded buntings (*Emberiza bruniceps*). *Journal of Comparative Physiology B.* **189**:623–635.
- Toews, D.P., Taylor, S.A., Streby, H.M., Kramer, G.R. and Lovette, I.J.** (2019). Selection on VPS13A linked to migration in a songbird. *Proc. of the Nat. Academy of Sci.* **116**, 18272–18274
- Tonra, C.M., Marra, P.P. and Holberton, R.L.** (2011). Migration phenology and winter habitat quality are related to circulating androgen in a long-distance migratory bird. *J. Avian Biol.* **42**, 397-404.
- Trivedi, A.K., Sur, S., Sharma, A., Taufique, S.K.T., Gupta, N.J. and Kumar, V.** (2019). Temperature alters the hypothalamic transcription of photoperiod responsive genes in induction of seasonal response in migratory redheaded buntings. *Mol. Cell. Endocrinol.* **493**, 110454.
- Tryjanowski, P. and Yosef, R.** (2002). Differences between the spring and autumn migration of the red-backed shrike *Lanius collurio*: record from the Eilat Stopover (Israel). *Acta. Ornithol.* **37**, 85–90.
- Tryjanowski, P., Kuźniak, S. and Sparks, T.H.** (2002). Earlier arrival of some farmland migrants in western Poland. *Ibis.* **144**, 62–68

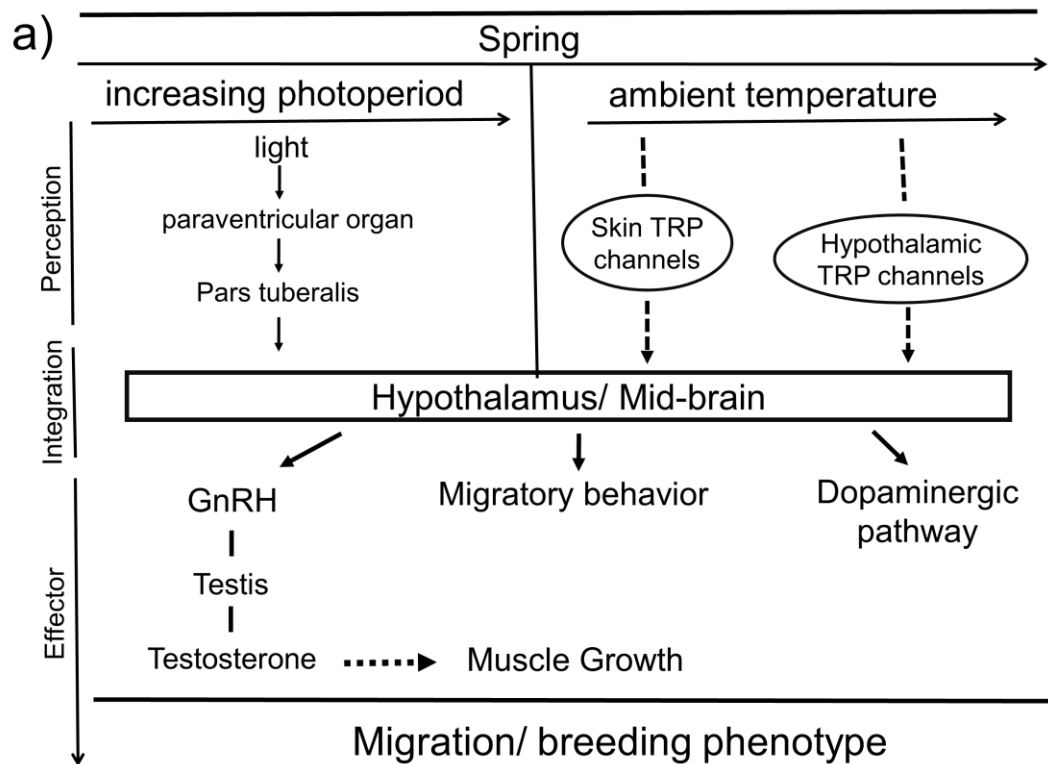
- Usui, T., Butchart, S.H.M. and Phillimore, A.B.** (2017). Temporal shifts and temperature sensitivity of avian spring migratory phenology: a phylogenetic meta-analysis. *J. Anim. Ecol.* **86**, 250–261.
- Verhagen, I., Tomotani, B.M., Gienapp, P. and Visser, M.E.** (2020). Temperature has a causal and plastic effect on timing of breeding in a small songbird. *J. Exp. Biol.* **223**, jeb218784.
- Visser, M.E., Holleman, L.J.M. and Caro, S.P.** (2009). Temperature has a causal effect on avian timing of reproduction. *Proc. Roy. Soc. Lond. B.* **276**, 2323–2331.
- Wagner, H.O.** (1930). Über Jahres- und Tagesrhythmus bei Zugvögeln. *Z. Vergl. Physiol.* **12**, 703–724
- Wang, H. and Siemens, J.** (2015). TRP ion channels in thermosensation, thermoregulation and metabolism. *Temperature.* **2**, 178–187.
- Wingfield, J. C and Farner, D.S.** (1978). The endocrinology of a natural breeding population of the White-crowned Sparrow (*Zonotrichia leucophrys pugetensis*). *Physiological Zoology* **51**, 188–205.
- Wingfield, J.C., Hegner, R.E., Dufty, A.M. and Ball, G.F.** (1990). The “challenge hypothesis”: theoretical implications for patterns of testosterone secretion, mating systems, and breeding strategies. *Am. Nat.* **136**, 829-846.
- Wingfield, J.C., Hahn, T.P., Wada, M., Astheimer, L.B. and Schoech, S.** (1996). Interrelationship of day length and temperature on the control of gonadal development, body mass, and fat score in white-crowned sparrows, *Zonotrichia leucophrys gambelii*. *Gen. Comp. Endocrinol.* **101**, 242–255.
- Wingfield, J.C., Hahn, T.P., Wada, M. and Schoech, S.J.** (1997). Effects of day length and temperature on gonadal development, body mass, and fat depots in white-crowned sparrows, *Zonotrichia leucophrys pugetensis*. *Gen. Comp. Endocrinol.* **107**, 44-62.
- Wingfield, J.C., Lynn, S. and Soma, K.** (2001). Avoiding the “costs” of testosterone: ecological bases of hormone-behavior interactions. *Brain. Behav. Evol.* **57**, 239-251.
- Wingfield, J.C., Hahn, T.P., Maney, D.L., Schoech, S.J., Wada, M. and Morton, M.L.** (2003). Effects of temperature on photoperiodically induced reproductive development,

circulating plasma luteinizing hormone and thyroid hormones, body mass, fat deposition and molt in mountain white-crowned sparrows, *Zonotrichia leucophrys oriantha*. *Gen. Comp. Endocrinol.* **131**, 143–158.

Wu, Y., Chhipa, R.R., Cheng, J., Zhang, H., Mohler, J.L. and Ip, C. (2010). Androgen receptor-mTOR crosstalk is regulated by testosterone availability: implication for prostate cancer cell survival. *Anticancer. Res.* **30**, 3895–3901.

Yang, P., Feng, J., Luo, J., Madison, M. and Hu, H. (2017). A critical role for TRP channels in the skin. In Neurobiology of TRP Channels. Emir, T.L.R., Ed, *Front Neurosci*, CRC Press/Taylor and Francis: Boca Raton, FL, USA, ISBN 978-1-315-15283-7.

Figures



b)

Experimental timeline

| | 1wk | 3 wk / 7cycles Zugunruhe | Response |
|----------------------------|--------------------|--------------------------|---|
| Winter non-migratory state | short day (8L:16D) | short day (8L:16D) | changes in phenotype <ul style="list-style-type: none"> body mass fattening testis volume muscle fiber width gene expression <ul style="list-style-type: none"> skin — <i>trpv4, trpm8</i> hypo — <i>trpv4, trpm8</i> -thalamus — <i>adcyp1, vps13a</i> — <i>th, ddc</i> muscle — <i>srd5a3, ar,</i> — <i>myod, mstn, pvalb</i> — <i>mtor, hif1a</i> |
| | | | |
| | | 35°C | |
| | | long day (13L:11D) | |
| | | 35°C | |

Figure 1. A schematic outline of the hypothesis conceptualized and experimental protocol used for the present study. Broken line indicates a suggested pathway.

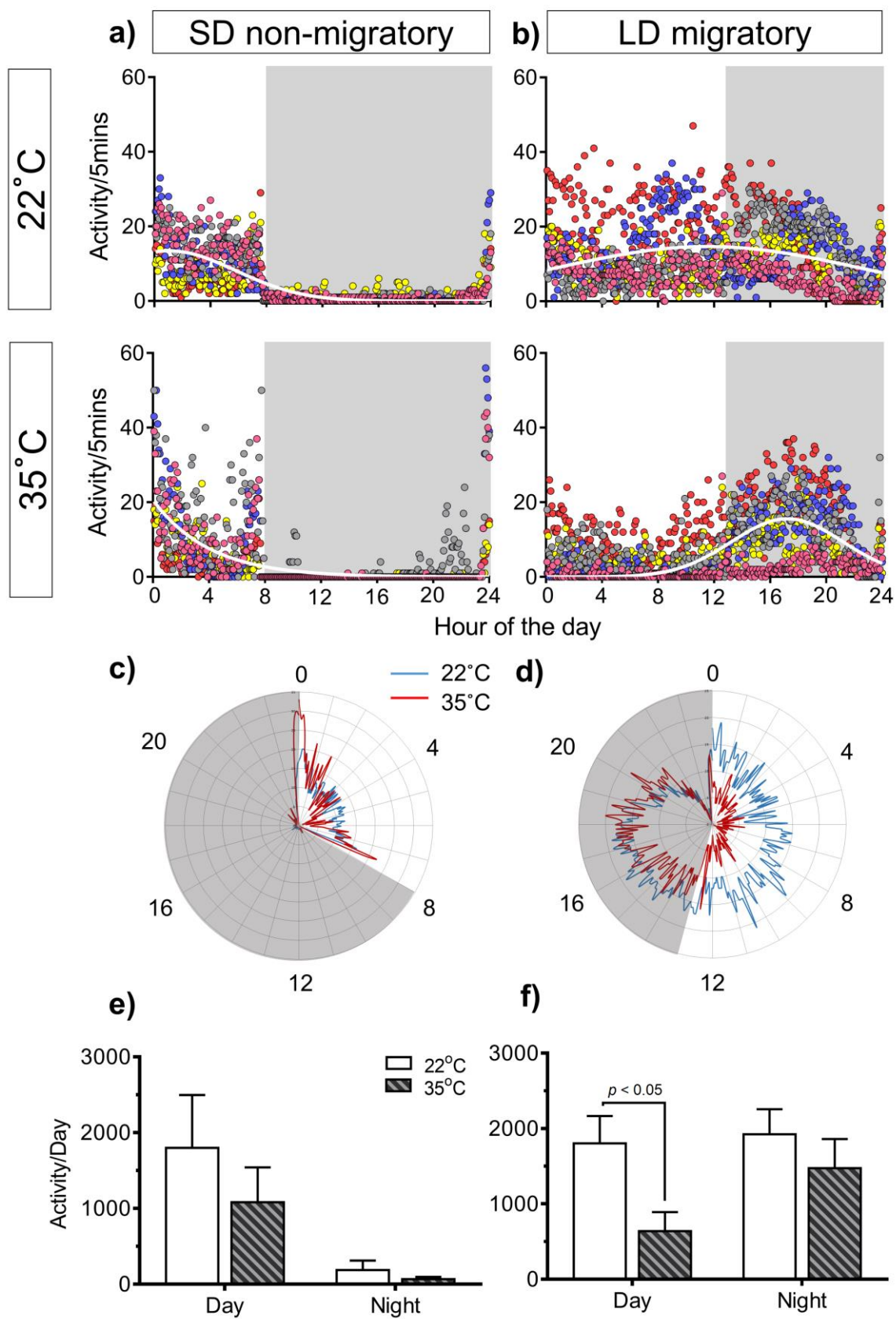


Figure 2. Daily activity pattern of blackheaded buntings (*Emberiza melanocephala*) in photoperiod-induced non-migratory (under short days, SD) and migratory (under long days, LD) life history stages (LHSs) at 22 °C and 35 °C temperatures. a-b): Mean activity levels of individual birds (n = 5 birds per group, shown by different colors) for 7 consecutive days in 5 min bins over 24 h. The white line is a non-linear Gaussian curve fit to 24-h activity distribution. c-d): Distribution in a polar plot of mean activity over 24-h in each LHS at both temperatures. e-f) Mean (\pm s.e.m.) total activity during the day and night in each LHS at both temperatures.

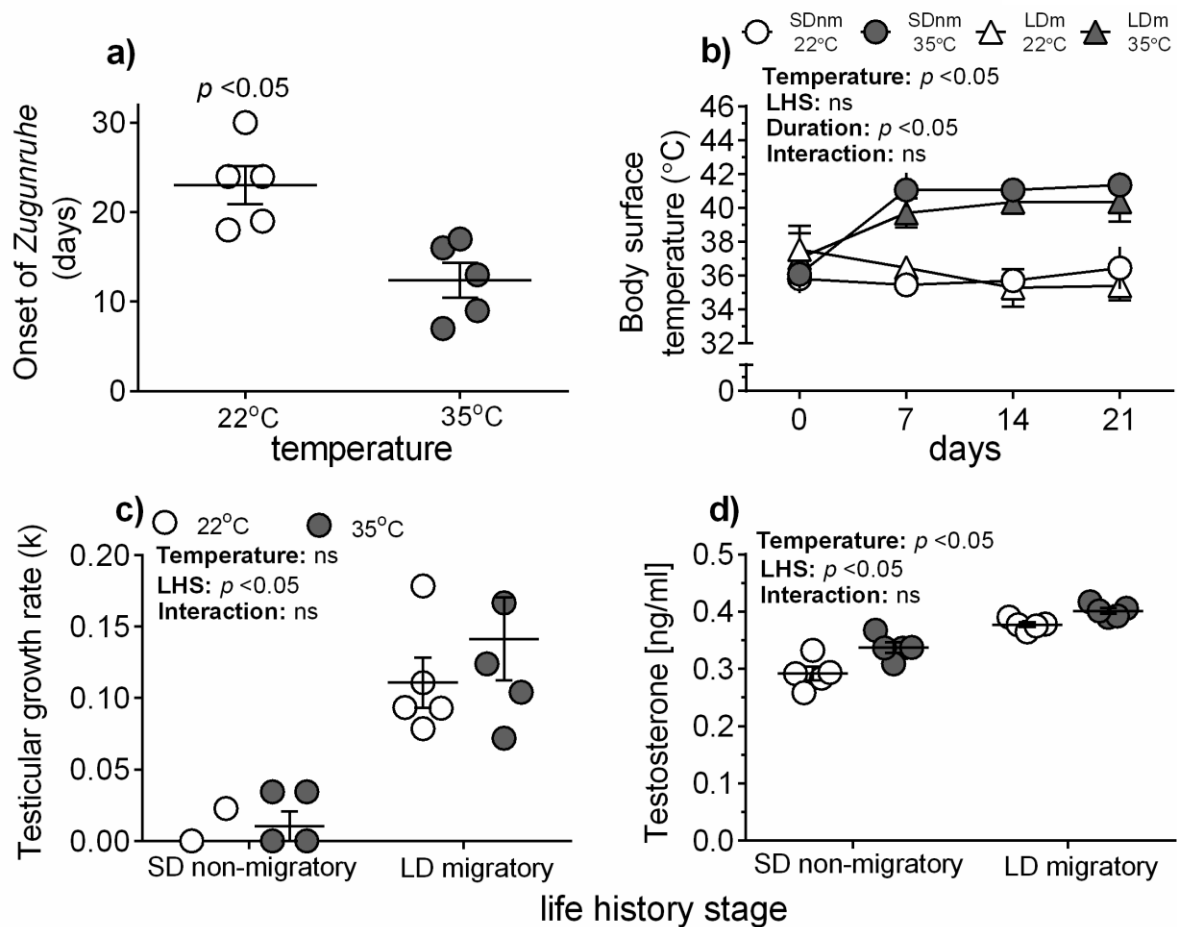


Figure 3. Changes in physiology of blackheaded buntings ($n = 5$) during photoperiod-induced non-migratory (under short days, SD) and migratory (under long days, LD) life history stages at 22 °C and 35 °C temperatures. a) Number of days to show the first night of *Zugunruhe*; b): weekly record of body surface temperature; c): the rate of testicular growth (k); d) plasma testosterone (T) levels. Each point symbol is an individual value in figures a, c and d (mean and SE are indicated by horizontal and vertical lines). In ‘b’, however, each point symbol is, and vertical line on it, if extends the limit of symbol, represents the standard error. For statistical significance, alpha was set at 0.05.

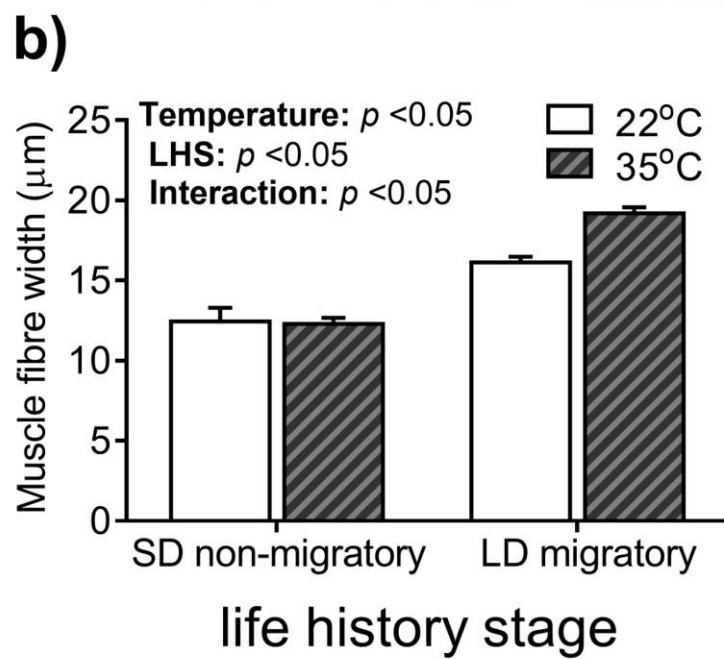
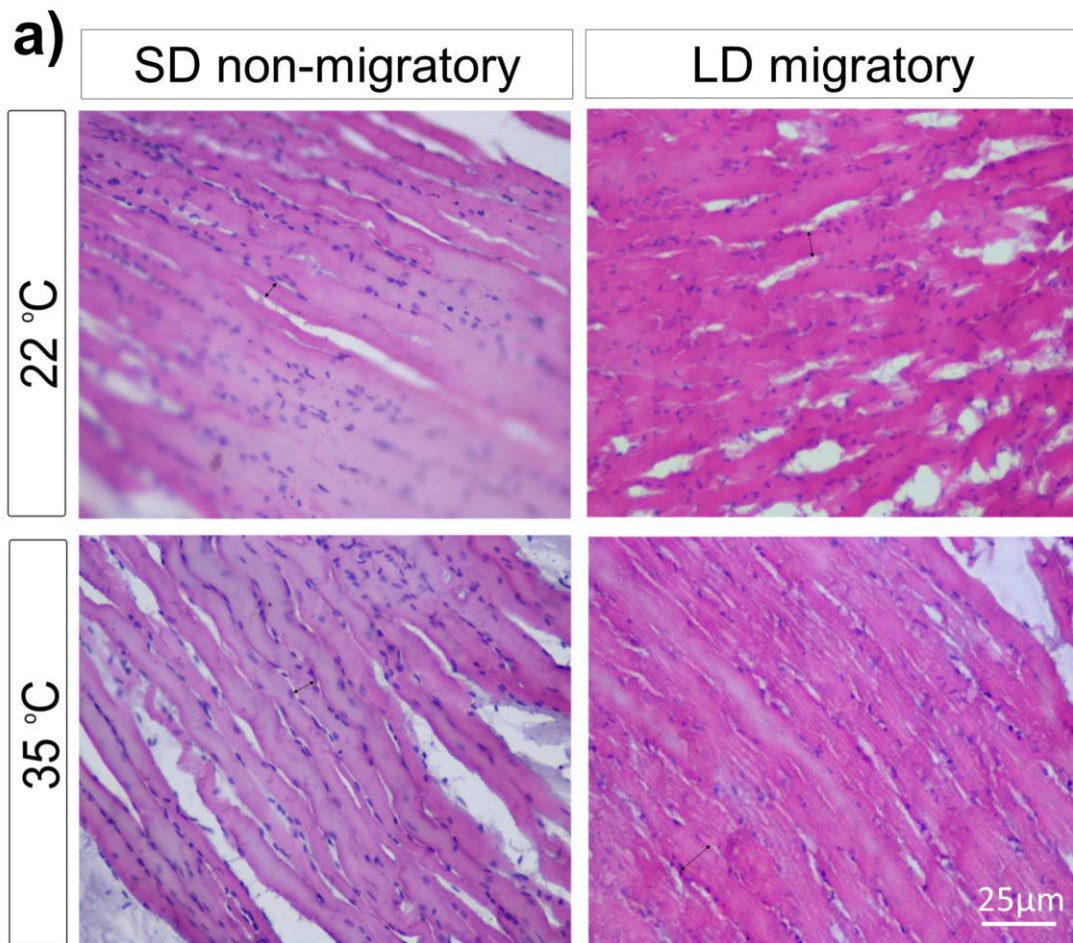


Figure 4. Changes in the skeletal (flight) muscles of blackheaded buntings ($n = 5$) in photoperiod-induced non-migratory (under short days, SD) and migratory (under long days, LD) life history stages (LHSs) at 22 °C and 35 °C temperatures. a): Photomicrograph of H-E stained muscle fibers at $\times 400$ magnification ($10 \times$ eye piece * $40 \times$ objective lens); scale bar = 25 μm . b): Mean (\pm s.e.m.) muscle fiber width in each LHS at both temperatures. For statistical significance, alpha was set at 0.05.

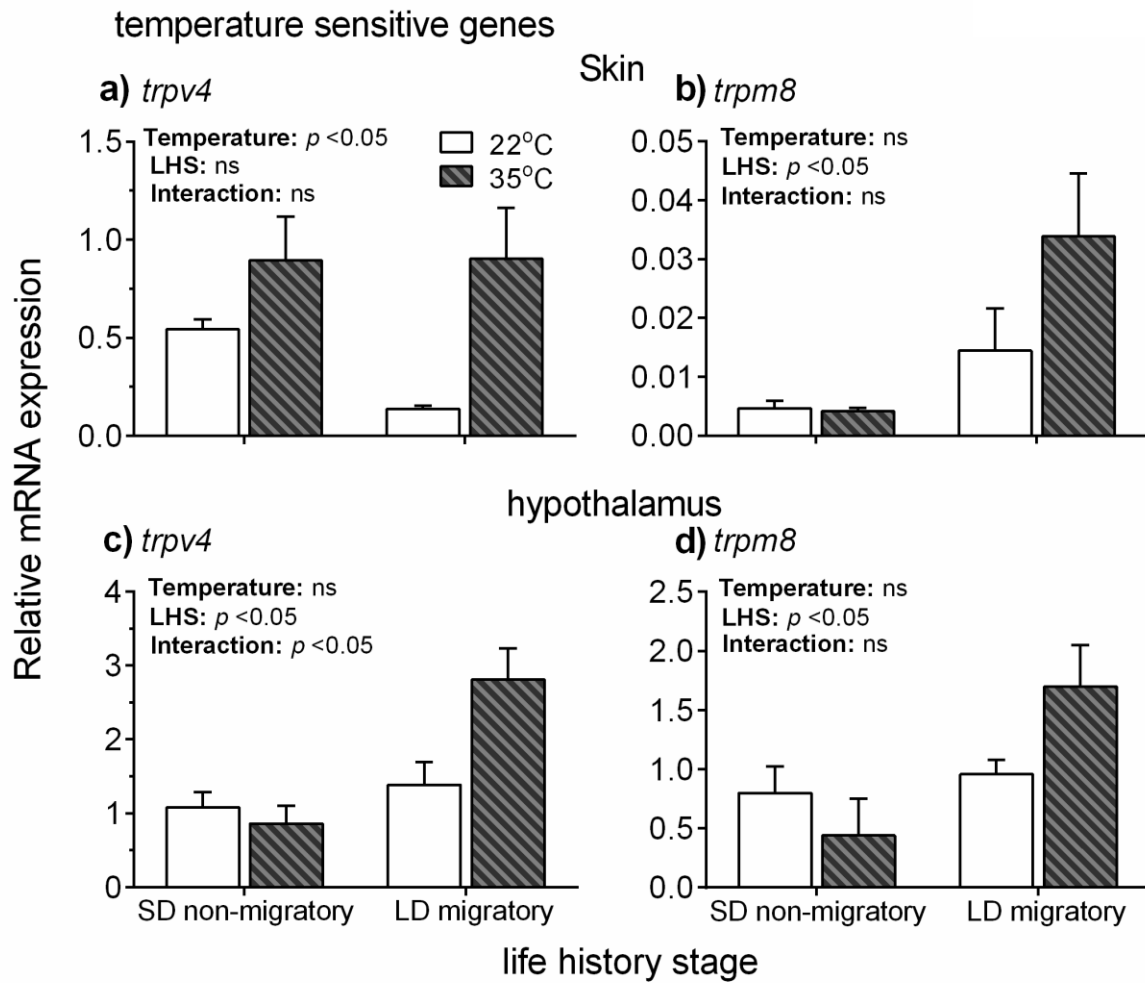
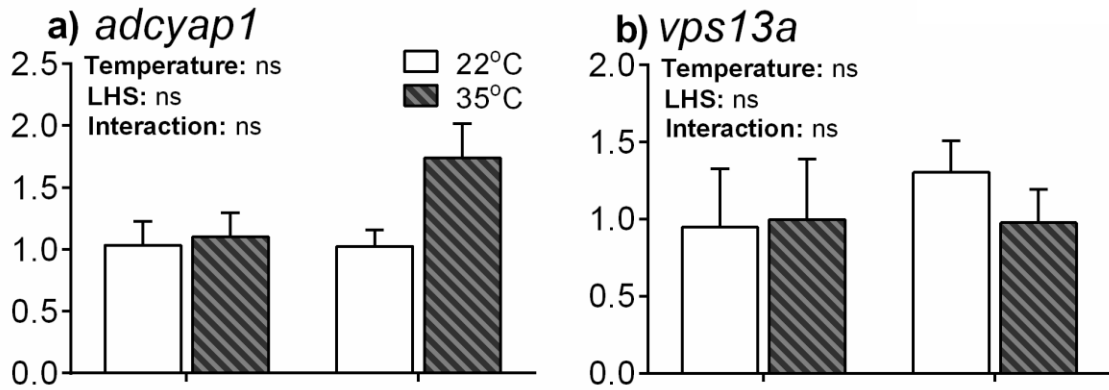


Figure 5. Mean (\pm s.e.m.; $n = 5$) mRNA expression of *trpv4* and *trpm8* genes in the skin (a, b) and hypothalamus (c, d) of blackheaded buntings in photoperiod-induced non-migratory (under short days, SD) and migratory (under long days, LD) life history stages at 22 °C and 35 °C temperatures.

hypothalamic migration related genes



dopamine synthesis pathway genes

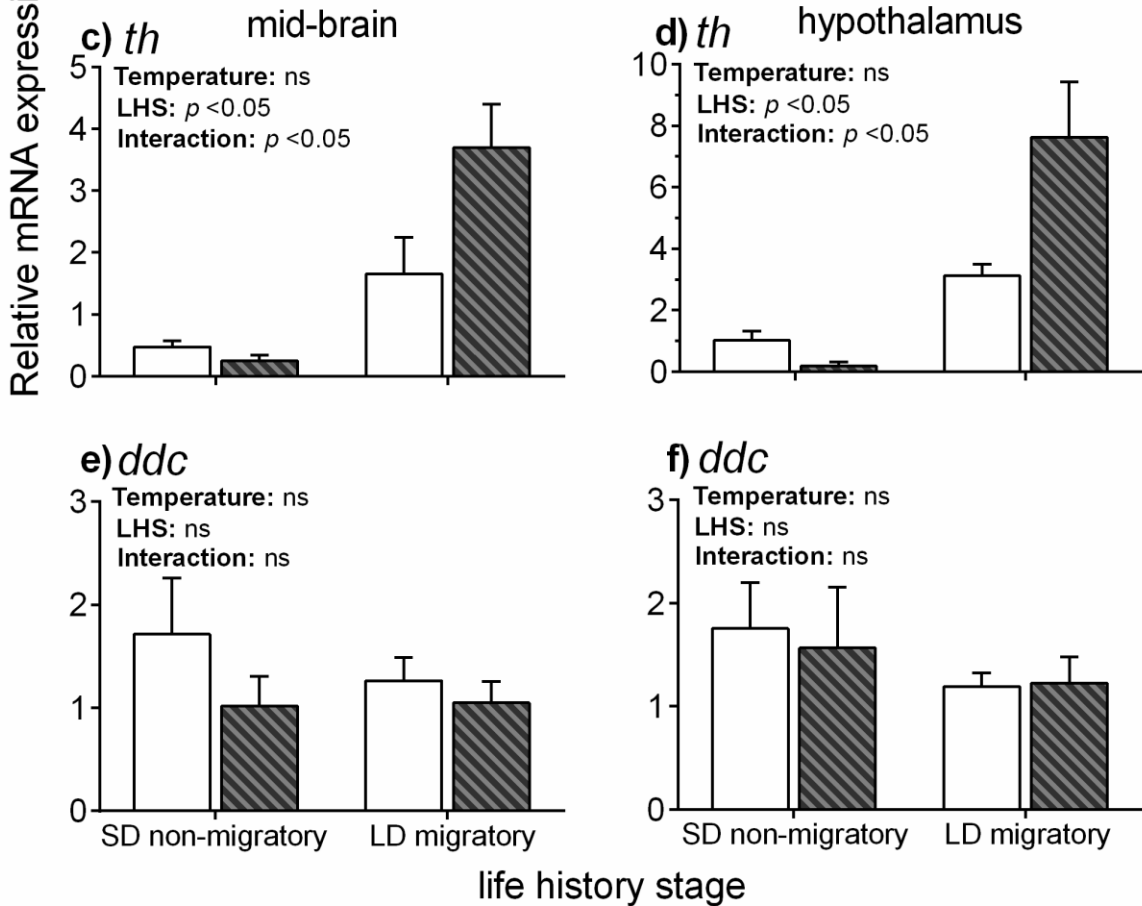


Figure 6. Mean (\pm s.e.m.; $n = 5$) mRNA expression of *adcyap1* (a) and *vps13a* (b) genes in the hypothalamus, and of *th* and *ddc* genes in the midbrain (c, e) and hypothalamus (d, f) of blackheaded buntings in photoperiod-induced non-migratory (under short days, SD) and migratory (under long days, LD) life history stages at 22 °C and 35 °C temperatures.

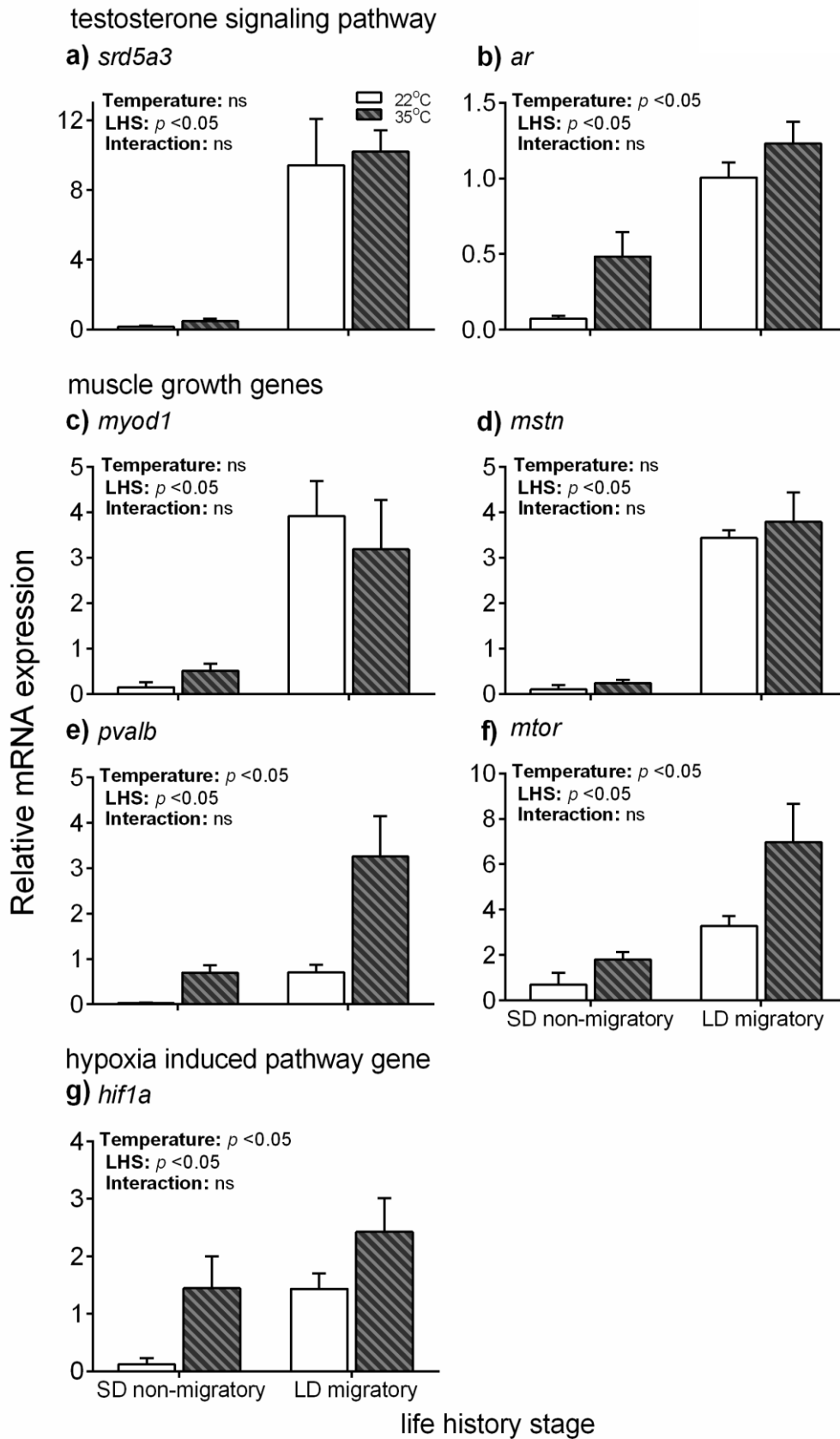


Figure 7. Mean (\pm s.e.m.; n = 5) mRNA expression of *srd5a3* (a), *ar* (b), *myod1* (c), *mstn* (d), *pvalb* (e), *mtor* (f) and *hif1a* (g) in the flight (skeletal) muscle of blackheaded buntings in photoperiod-induced non-migratory (under short days, SD) and migratory (under long days, LD) life history stages at 22 °C and 35 °C temperatures.

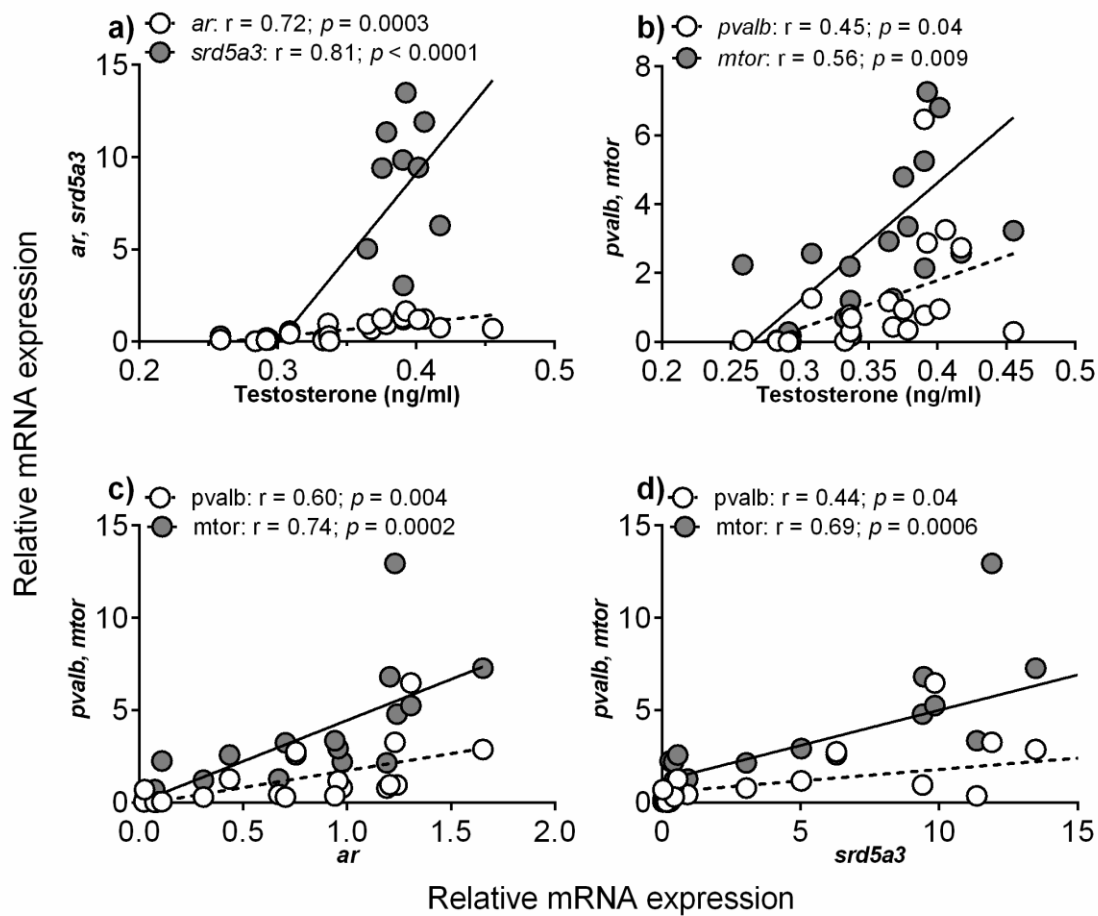


Figure 8. Scatter plots showing correlation of plasma testosterone levels with mRNA levels of *ar* and *srd5a3* genes (a), and *pvalb* and *mtor* (b). (c-d) correlation of mRNA levels of *ar* (c) and *srd5a3* (d) genes with *pvalb* and *mtor* genes in the flight (skeletal) muscle of blackheaded buntings in photoperiod-induced non-migratory (under short days, SD) and migratory (under long days, LD) life history stages at 22 °C and 35 °C temperatures. Lines in the scatter plot denote significant linear regression.

Table S1. Details of primers used in Real-time PCR

| Gene | Primer sequence | Accession number |
|----------------|--|-------------------------|
| <i>trpv4</i> | F: 5' CTTCAACAGACCCATCCTCTTC 3' R: 5' TGTCAGGCGCTTCTTGTG 3' | MF979804 |
| <i>trpm8</i> | F: 5' TCAGACCTGTGGAATGTTATGG 3' R: 5' CAGCAAAGAGGAAGAGGAAGAA 3' | MG461953 |
| <i>ddc</i> | F: 5' TGCGGGAAGTGCTTTCAT 3' R: 5' CTAGGAGCCATTTGTGAGGATT 3' | MT394487 |
| <i>th</i> | F: 5' GATCGTTGAGCTGGAATACTT 3' R: 5' CACATCTTCTGCTACCCCTCTTG 3' | KM272254 |
| <i>adcyap1</i> | F: 5' ACATAGACGGCATCTTCACG 3' R: 5' CAGGACGGCTGCTAAGTATTTTC 3' | MF427847 |
| <i>vps13a</i> | F: 5' GTGAATGGCAGTACACTTACGA 3' R: 5' TGGCATGGAAGACAGACTTAAC 3' | MT394488 |
| <i>srd5a3</i> | F: 5' GCGTCTCTTGCCCTCATTAT 3' R: 5' ATCACTACACACCACCATGTC 3' | MT394489 |
| <i>ar</i> | F: 5' ACCCCATAGCAAACACCATC 3' R: 5' TGGTCTACGTGGTCAAATGG 3' | KU175234 |
| <i>myod1</i> | F: 5' CATGCCATCGGAGCAGTT 3' R: 5' GAGCAGGAGGACGCTTATTAC 3' | MF994521 |
| <i>mstn</i> | F: 5' CACCGGTATTTGGCAGAGTAT 3' R: 5' GATTCCGTCCGTTCTCATCAA 3' | MT394490 |
| <i>pvalb</i> | F: 5' GAGATAAGGACGGTGATGGTAAA 3' R: 5' GTTGGAAATTGGGCAGTGAAG 3' | MK986667 |
| <i>mtor</i> | F: 5' GAGTCCTTACTCTGTGGTTTGAC 3' R: 5' CCTGCAGCCAAGTGTCTATT 3' | MT415821 |
| <i>hif1a</i> | F: 5' TGCTGATCCTGCACTCAATAG 3' R: 5' AAGGGCTGGTTGGTTGTT 3' | MF994522 |

Figure S1

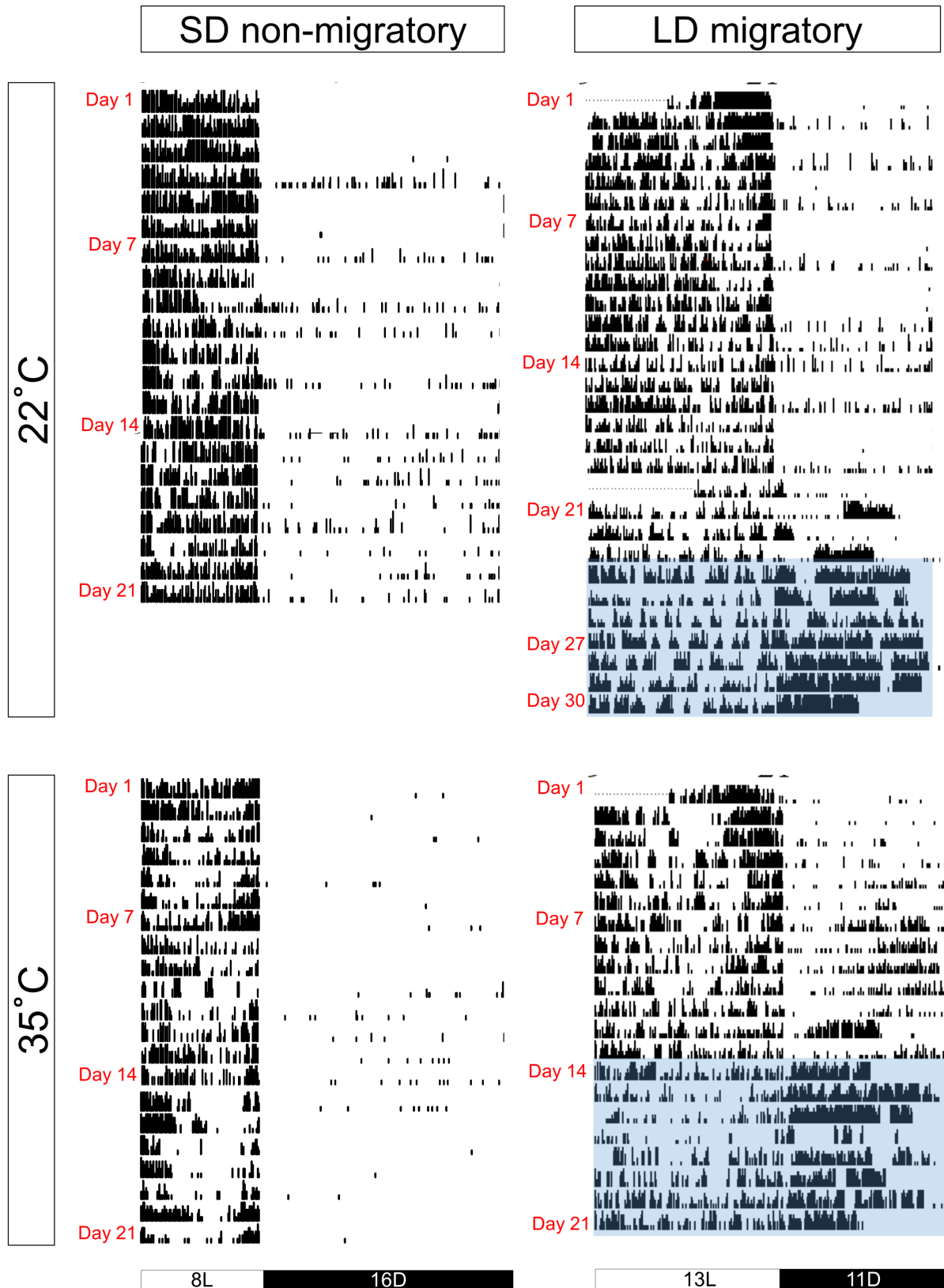


Figure S1. Representative 24-h activity record (actogram) of blackheaded buntings (*Emberiza melanocephala*) during photoperiod-induced non-migratory (under short days, SD) and migratory (under long days, LD) life history stages at 22 °C and 35 °C temperatures.

Figure S2

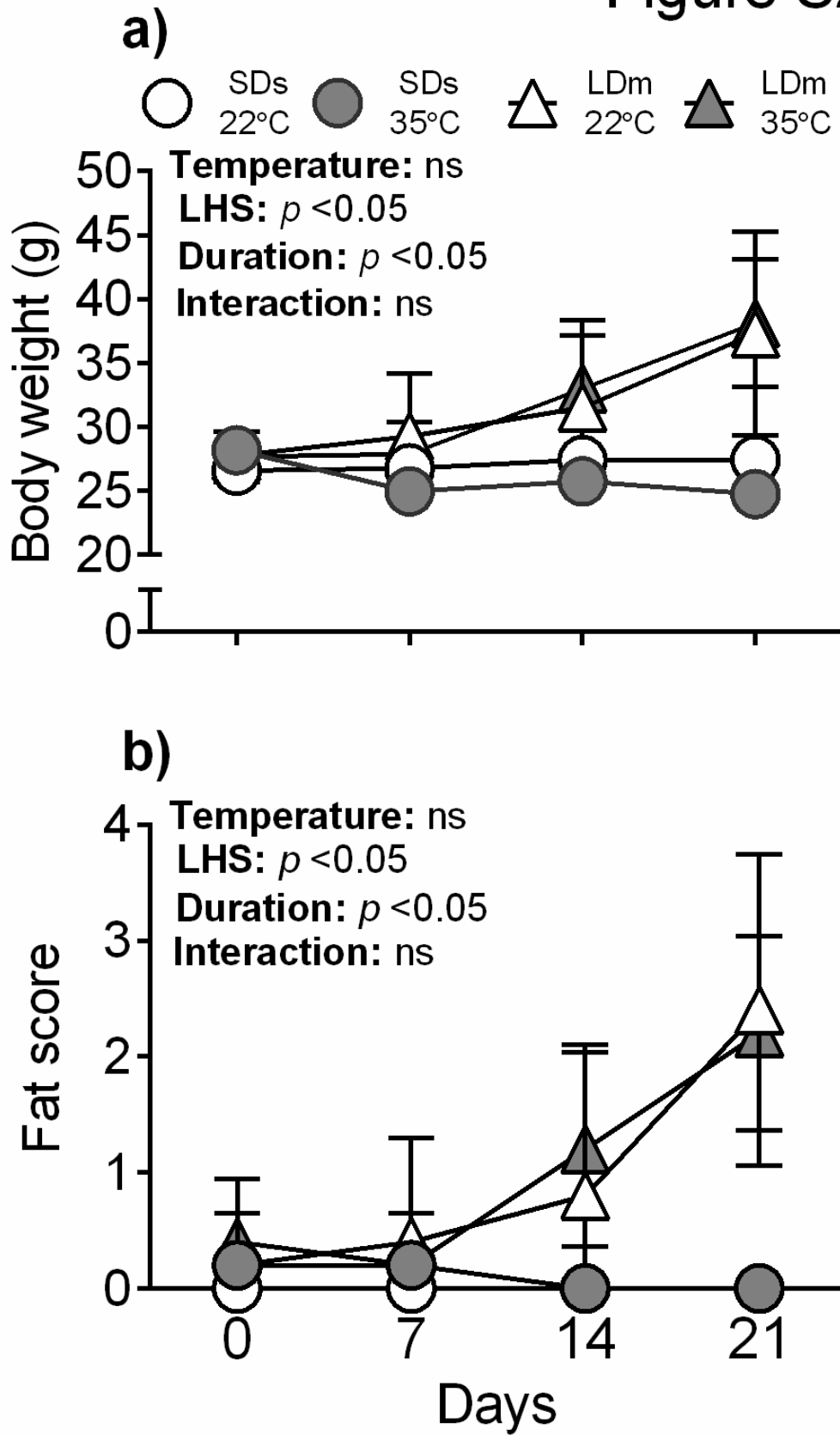


Figure S2. Mean (\pm s.e.m.; $n = 5$) weekly changes in body weight (a) and fat score (b) of blackheaded buntings (*Emberiza melanocephala*; $n = 5$) during photoperiod-induced non-migratory (under short days, SD) and migratory (under long days, LD) life history stages at 22 °C and 35 °C temperatures.