

A viral aphrodisiac in the cricket *Gryllus texensis*

Short title: A viral aphrodisiac

Keywords: parasitic manipulation, sickness behaviour, sexual behaviour, STI, sexually transmitted infection

Shelley A. Adamo<sup>1</sup>, Ilya Kovalko<sup>1</sup>, Russell H. Easy<sup>1</sup>, Don Stoltz<sup>2</sup>

1. Department of Psychology and Neuroscience, Dalhousie University, Halifax, NS

B3H 4R2

2. Department of Microbiology and Immunology, Dalhousie University, Halifax, NS

B3H 4R2

Corresponding Author:

Shelley Adamo

Dept. Psychology and Neuroscience

Dalhousie University

Halifax, NS B3H 4R2

e-mail: [sadamo@dal.ca](mailto:sadamo@dal.ca)

phone: 902 494 8853

fax: 902 494 6585

We identified the insect iridovirus IIV-6/CrIV as a pathogen of the cricket *Gryllus texensis* using electron microscopy (EM) and polymerase chain reaction (PCR) analysis. Electron microscopy (EM) showed that the virus attacks the fat body, an organ important for protein production, immune function and lipid storage. During infection the fat body hypertrophied, but egg production withered, leaving the lateral oviducts empty of eggs; the females were effectively sterile. EM of the testis of infected males suggests that the testis was not invaded by the virus, although sperm taken from the spermatophores of infected males showed little or no motility. Nevertheless, males and females continued to mate when infected. In fact, infected males were quicker to court females than uninfected controls. The virus benefits from the continued sexual behaviour of its host; transmission studies show that the virus can be spread through sexual contact. Sickness behaviour, the adaptive reduction of feeding and sexual behaviour that is induced by an activated immune system, is absent in infected crickets. Total hemolymph protein is reduced, as is phenoloxidase activity, suggesting a reduction in immune protein production by the fat body. The evidence suggests that during IIV-6/CrIV infection, the immune signal(s) that induce sickness behaviour are absent. Curtailment of a host's sickness behaviour may be necessary for any pathogen that is spread by host sexual behaviour.

48	List of Abbreviations
49	
50	EDTA - ethylenediaminetetraacetic acid
51	EM - electron microscopy
52	ENF - Family of insect cytokines (consensus amino-terminal sequence Glu-Asn-Phe)
53	IIV-6 - insect iridovirus type 6
54	CrIV - Cricket iridovirus
55	PCR - polymerase chain reaction
56	STI - sexually transmitted infection
57	
58	
59	
60	
61	

## Introduction

Viruses are known manipulators of host behaviour (Van Houte et al., 2013). For some viruses, certain changes in host behaviour appear to be an important element in successful viral transmission (e.g. Burand et al., 2012). In these systems, there will be intense selection pressure on the virus to manipulate its host. The existence of this evolutionary pressure provides us with the opportunity to discover how evolution has solved the neurobiological problem of behavioural control. This problem is especially interesting in the context of viruses as they tend to have small genomes, and so have a limited number of potential molecular tools.

How viruses, or any other pathogen/parasite, alter host behaviour remains poorly understood (Adamo, 2013; van Houte et al., 2013; Adamo, 2012; Lefèvre et al., 2009). Most pathogens appear to use multiple mechanisms simultaneously to alter host behaviour, as opposed to relying on a ‘magic bullet’ approach (Adamo, 2013). One mechanism that appears to be a common route leading to altered host behaviour is the interruption of immune/neural communication signals in the host (Adamo, 2013).

Signaling molecules produced by the immune system (e.g. cytokines) can induce and/or suppress a wide range of host behaviours in both vertebrates (Dantzer, 2008) and invertebrates (Adamo, 2008). These immune-induced changes in behaviour are known collectively as ‘sickness behaviours’, and they help animals recover from infection (Hart, 1988). Such immune/neural connections may be especially prone to disruption by parasitic manipulators, because all parasites are under heavy selection to interfere with host immune function (e.g. by altering cytokine production). Hijacking immune/neural communication pathways may be a small evolutionary step (Adamo, 2013). In some host/pathogen systems it may be important to prevent host behavioural responses to infection (i.e. sickness behaviours) as these behaviours may reduce viral transmission and/or interfere with viral manipulation of behaviour.

Some viruses are transmitted by sexual contact (e.g. Burand et al., 2012). Some of these

viruses cause host sterility; for example, the *Helicoverpa zea* nudivirus 2 sterilizes its moth host, *Helicoverpa zea* (Burand et al., 2004). Therefore, continued sexual behaviour does not increase host fitness. It is, however, vital for viral transmission (Burand et al., 2004). Females infected with *Helicoverpa zea* nudivirus 2 show increased sexual behaviour, leading to enhanced viral transmission (Burand et al., 2005). Although the mechanistic details remain to be determined, the virus appears to use multiple methods to manipulate host sexual behaviour (Burand et al., 2005; Burand and Tan, 2006). One mechanism not yet explored in this system is the effect of the virus on host sickness behaviour. In most animals, an immune challenge results in a reduction in sexual behaviour (e.g. crickets, Jacot et al., 2004). Therefore, all sexually transmitted pathogens probably need to suppress the expression of host sickness behaviour in order to maintain or increase sexual behaviour in their host.

In this paper we examine the effect of an iridovirus on the cricket *Gryllus texensis* (Cade and Otte, 2000). Iridoviruses are large icosahedral, cytoplasmic DNA viruses that attack invertebrates, reptiles and amphibians (Williams et al., 2005). The viruses are probably common in field populations, and can cause epizootics (Williams et al., 2005). One type of iridovirus (IIV-6; cricket iridovirus isolate (CrIV), Jakob et al., 2002) attacks crickets. The fat body is the primary target (Just and Essbauer, 2001). It takes on an iridescent blue sheen, due to the large number of viral particles that are arranged in a paracrystalline array (Williams et al., 2005). The fat body is the major site of protein production in insects, as well as a storage organ for lipid (Chapman, 1998). It is also critical for disease resistance because it produces proteins vital for immune function (Chapman, 1998). The hemocytes, the immune cells of the blood, are also infected (Klepsies et al., 1999); in other words, this virus invades all major immune tissues of the cricket. Therefore, this virus is well placed to alter immune/neural communication in its host. For example, a decrease in the production of host immune proteins could suppress the expression of the host's sickness behaviour.

## Results

## Identity of the Virus

The blue sheen of the fat body suggested the presence of an iridovirus (Williams et al., 2005). EM confirmed the presence of a large (approximately 150 nm) icosahedral virus (Fig. 1). The fat body cells were heavily packed with virions. Viral particles were also found in the tracheal epithelial cells and muscle. In some cells, virions formed small paracrystalline arrays. Viral particles were not found in the cells of the testis.

No other pathogens were found. Culturing of fat body or hemolymph from infected crickets (n=6 females and 4 males) produced no growth on nutrient agar plates, suggesting that there were no common bacterial or fungal pathogens present.

Given the EM results, and from descriptions in the literature (e.g. Kleepies et al., 1999; Williams et al., 2005), the virus was tentatively identified as cricket iridovirus (CrIV) or insect iridovirus type 6 (IIV-6) (both are considered the same species of virus, with CrIV a variant of IIV-6, Jakob et al., 2002). Primers for the major capsid protein of this virus produced a single amplicon from DNA extracted from fat body. Sequencing of the PCR amplicon confirmed its identity as *Gryllus bimaculatus* iridovirus major capsid protein (E Value=0.0).

Cricket hemolymph was found to contain viral proteins, including the major capsid protein of IIV-6/CrIV.

## Viral effects on reproductive tissue in *Gryllus texensis*

The spermathecae were full of sperm, demonstrating that infected females were sexually active (n=18/18 infected females). The lateral oviducts typically had few or no eggs (n=18 infected females; all females had fewer than 10 eggs/lateral oviduct). Normally lateral oviducts hold approximately 120 eggs (Adamo and Baker, 2011). The ovaries contained few or no developing follicles.

In contrast, observations of the testes of infected male crickets suggested that there was no gross decrease in size, although testicular size was not quantified ( $n=7$ ). The spermatophore of infected males held sperm (4/4 males). However, the sperm showed little or no motility ( $n=4$ ), with the sperm remaining inside, or close to, the remains of the crushed spermatophore during the 10 min observation period. In contrast, sperm liberated from the spermatophores of control males ( $n=3$ ) moved vigorously away from the remains of the spermatophore during the same time period.

There was no difference in live weight between infected crickets ( $n=13$  males, 18 females) and uninfected ( $n=8$  males, 10 females) crickets (Two-way ANOVA,  $F(1, 45)=0.06$ ,  $p=0.80$ ), although females ( $n=28$ ) were heavier than males ( $n=21$ ; Two-way ANOVA,  $F(1, 45)=22.8$ ,  $p<0.0001$ ; no significant interaction, ( $F(1, 45)=0.19$ ,  $p=0.67$ ). There was also no difference in size between infected and control crickets as estimated by femur length (Two-way ANOVA, ( $F(1, 45)=0.10$ ,  $p=0.38$ ; sex  $F(1, 45)=0.78$ ,  $p=0.38$ ; interaction  $F(1, 45)=0.77$ ,  $p=0.38$ ; sample sizes as shown above).

#### Evidence for sexual transmission

None of the sentinel animals ( $n=4$ ) showed evidence of infection. The fat body appeared normal and was devoid of viral DNA. Of the 6 uninfected females courted by infected males, 3 became infected after physical contact with males during sexual behaviour, including one that did not copulate with an infected male, but was merely courted by that male (courting includes close physical contact). Of the 4 uninfected males that were placed with infected females, 2 became infected after mating with infected females. However, one male remained uninfected even after he copulated with an infected female.

#### Behavioural effects of the virus.

There was no significant difference in anti-predator behaviour between infected and uninfected crickets (Mann-Whitney,  $U=150$ ,  $p=0.5$ ; control  $n=12$ , infected  $n=29$ ).

Examining locomotion separately, we found no difference in locomotion between

infected and uninfected crickets (Mann-Whitney,  $U=160$ ,  $p=0.70$ ; control  $n=12$ , infected  $n=29$ ). Infected and uninfected crickets did not differ significantly when compared to control, uninfected crickets from the same colony run 6 months previously ( $n=23$ ; Adamo et al., 2013; Kruskal-Wallis  $H=0.57$ ,  $p=0.75$ ).

#### Effect of infection on sexual behaviour

Infected male crickets were as likely to court females (43.8%  $n=16$ ) during their initial presentation as were uninfected crickets (50%,  $n=6$ ; G-test (1 df) = 0.07,  $p=0.79$ ). Taking the average value of 3 trials, infected males ( $n=7$ ) had a shorter latency to court (i.e. producing courtship song) than uninfected males ( $n=5$ , Mann-Whitney  $U=0.001$ ,  $p=0.0025$ , Fig. 2). However, uninfected males challenged with heat-killed *S. marcescens* ( $n=12$ ) took longer to court females compared with sham injected ( $n=12$ ) or unchallenged controls ( $n=12$ ) ( $F(2,33)=7.6$ ,  $p=0.002$ . Tukey's multiple comparison, no significant difference between control and sham-injected crickets  $q=0.25$ ,  $q=4.6$ ,  $p>0.05$ . Fig. 2).

There was no significant difference in the time required for infected females ( $n=5$ ) to mount a courting male (Kruskal-Wallis=0.65,  $p=0.73$ ) compared with controls ( $n=8$ ).

#### Effect of infection on sickness behaviour (illness-induced anorexia)

There was no evidence of illness-induced anorexia in infected crickets ( $n=21$ ) even after injection of heat-killed bacteria ( $n=11$ ) (Fig. 3;  $F(3, 52)=0.12$ ,  $p=0.95$ , sham-injected crickets=11, uninfected controls,  $n=11$ ). Healthy crickets that were tested prior to the infection of the colony ( $n=16$ ) significantly reduced feeding when immune-challenged with heat-killed *S. marcescens* ( $n=16$ ) (Fig. 3;  $t(30)=3.96$ ,  $p=0.0004$ ).

#### Physiological Effects

##### Hemocyte Counts

Total hemocyte counts did not differ between infected ( $n=7$ ) and uninfected ( $n=8$ )



crickets ( $t(13)=1.13$ ,  $p=0.28$ ).

## Total Hemolymph Protein and Phenoloxidase Activity

Infected crickets had significantly less total protein in their hemolymph ( $349.8 \pm 12.02$  mg/mL,  $N=46$ ) than did controls ( $570.5$  mg/mL  $\pm 21.33$ ,  $N=67$ ) ( $t(111)=7.99$ ,  $p<0.0001$ ). We noted anecdotally that infected crickets took longer to melanize their wounds than controls. This observation led us to measure phenoloxidase activity, an enzyme important for melanization (Chapman, 1998). Total phenoloxidase activity was also significantly lower in infected crickets ( $n=55$ ) than in control crickets ( $n=55$ ;  $t(108)=2.44$ ,  $p=0.016$ ; Fig. 4). Total phenoloxidase activity was significantly lower in infected crickets even when corrected for total protein content in the blood ( $t(86)=5.29$ ,  $p<0.0001$ ,  $n=58$  infected,  $n=30$  control). There was a significant correlation between total protein content and phenoloxidase activity in infected animals (Pearson's  $r^2=0.40$ ,  $p=0.001$ ,  $n=58$ ). Controls ( $n=20$ ) also had greater inducible in vitro phenoloxidase activity relative to baseline values than did infected crickets ( $n=12$ ; Mann Whitney  $U=28.5$ ,  $p=0.005$ ).

## Discussion

Using both molecular methods and electron microscopy, we were able to identify the pathogen in our cricket colony as Insect Iridescent Virus, Type 6 (IIV-6, cricket variant CrIV). We also showed that IIV-6, like some other insect viruses (Van Houte et al., 2013), is capable of altering host behaviour. Infected crickets began courtship singing sooner than controls (Fig. 2). Moreover, sickness behaviour was curtailed (Fig. 3). Both of these changes would tend to produce a similar result – a continuation of sexual behaviour in infected animals. However, host anti-predator behaviour, a behaviour critical for host survival (Adamo et al., 2013), was indistinguishable from that of controls. This new host behavioural phenotype is likely to enhance viral transmission.

Our results suggest that physical contact, a key feature of sexual behaviour, is capable of transmitting the virus (also see Hunter et al., 2003). Crickets contact each other

frequently during courtship; for example, both males and females brush their antennae over each other's cuticle (Adamo and Hoy, 1994). Crickets groom their antennae with their mouthparts during courtship (Adamo and Hoy, 1994), and this could transfer particles from the antennae into the mouth. *Per os* infection is thought to be the main route of infection for this virus (Williams et al., 2005). Our sentinels remained healthy, with no evidence of viral DNA in their fat body, suggesting that merely being in the same room as infected animals is not sufficient for infection. This is consistent with other papers on IIV-6 and cricket hosts (e.g. Kleepsies et al., 1999). Other possible modes of viral transmission may be rare in this cricket. For example, infection from viral particles shed into the environment may be uncommon. Humidity levels are often low near Austin, Texas (Ward, 2010), and these particles lose activity rapidly on dry soil (Williams et al., 2005). Cricket densities are usually low in the field (Cade and Cade, 1992), and this species is asocial. Males may be able to infect each other during aggressive behaviour (Williams et al., 2005), but this behaviour only occurs within the context of sexual behaviour (Loher and Dambach, 1989). Iridoviruses can also be spread by cannibalism (Williams et al., 2006). Crickets will cannibalize each other (Adamo et al., 2010), but this may be an uncommon event in the field due to competition from other scavengers for cricket corpses. We found no evidence of infection of the testes, supporting the hypothesis that this virus is not vertically transmitted (Williams et al., 2005). Furthermore, Just and Essbauer (2001) found no sign of infection in the ovaries and testes of a related cricket (*Gryllus bimaculatus*) infected with the same virus. Therefore, host sexual behaviour may be important for transmission under natural conditions.

Total protein concentration in the hemolymph was lower in infected animals than in controls. Most of the proteins in insect hemolymph are made by the fat body (Chapman, 1998). Therefore, this result is consistent with the hypothesis that the virus redirects host fat body towards making viral particles and away from making host proteins. One of the most abundant proteins in the hemolymph of females is vitellogenin, a yolk protein made by the fat body (Chapman, 1998). The steep decline in total protein in the hemolymph suggests that the amount of vitellogenin available to the ovaries is probably also greatly reduced during infection. This reduction could explain the loss of egg production; eggs

cannot be made without the yolk protein. The testes may be less affected by infection because they rely less on proteins made by the fat body.

We do not know how the virus alters host behaviour, but our results provide some indirect evidence suggesting a mechanism. Whether the production of all host proteins was equally suppressed during infection is unknown, but total phenoloxidase activity (Fig. 4) was significantly reduced, suggesting that less prophenoloxidase is being made. Phenoloxidase is virucidal (Shelby and Popham 2006); therefore this decline would probably benefit the virus. The decline in the production of immune-related compounds by the fat body may also help explain the lack of sickness behaviour. In insects, cytokines (e.g. immune activators like ENF family peptides) are made by the fat body and/or hemocytes (Kamimura, 2012). Cytokines are responsible for inducing sickness behaviours in vertebrates (Dantzer et al., 2008), and are thought to be involved in inducing the same phenomena in invertebrates (Adamo 2008). Viral infection can trigger cytokine release in insects, leading to the induction of an anti-viral state (Kemp and Imler, 2009). Preventing this state probably benefits the virus. If the virus inhibits the host's immune system from producing immune-related peptides and proteins such as cytokines, this could explain the decline in sickness behaviours in the host.

The ability of this virus to attack the fat body, a key producer of molecules important for immune function (Chapman, 1998), probably pre-adapts it for the ability to suppress the host's defense against it. However, even if the declines in sickness behaviour began as a side-effect of the virus's attack on the fat body, positive selection for these effects could lead to augmentation of these changes, with a diminution of effects on fat body proteins needed for host survival. More research is needed to determine whether there is positive selection for the virus to specifically suppress host sickness behaviour (see Poulin, 2010 for a discussion of this issue).

The increase in male sexual behaviour, and the continuation of female sexual behaviour, is unlikely to be a host response, i.e. terminal reproductive investment. Terminal reproductive investment, an increase in reproduction prior to death, is known to occur in

female crickets (Adamo, 1999; Shoemaker et al., 2006). However, because infected females have few eggs, continued mating is unlikely to increase their fitness, especially as they are capable of storing sperm from previous matings (Loher and Dambach, 1989). Infected males have low motility sperm and may be infertile. Therefore, it is unlikely that increased mating benefits males.

Because the infection of our colony was unintentional, the infected animals could represent a non-random subset of our colony. Such a subset might be different from control crickets regardless of any direct viral effects. However, infected animals often had assay values beyond the range of values found within our colony animals (e.g. total phenoloxidase activity, Fig. 4). These values are pathological and not likely to be the result of the virus selecting for an unusual subset of the population. Similarly, crickets in our control group were sometimes crickets from a different colony, although these animals were descended from crickets from our lab colony. However, we do not believe there were any significant differences between the two populations of crickets. For example, with sexual behaviour, we compared our infected colony animals with historical controls (data collected from animals prior to the infection of the colony) as well as with uninfected animals from Ottawa. The historical controls and the uninfected animals from Ottawa did not differ in their mating behaviour, suggesting that there were no significant differences between the two populations.

Sexually transmitted infections (STIs) are widespread in insects (Knell and Webberley, 2004; Burand et al., 2012) and other animals (Lockhart et al., 1996). STIs commonly result in reductions in fertility (Knell and Webberley, 2004); therefore, animals will be selected to avoid infected conspecifics. Nevertheless, there is no evidence that insects avoid mating with conspecifics infected with STIs, even though some insects (e.g. ants) avoid individuals infected with non-STIs (De Roode and Lefèvre, 2012). In fact, some animals infected with STIs are able to attract even more mating partners than uninfected controls (insects: Knell and Webberley, 2004; Goodacre and Martin, 2012; vertebrates: Dass et al., 2011). The popularity of mates infected with STIs is surprising as animals are typically very sensitive to the state of a prospective mate's health, and avoid mating with

conspicuous with contagious diseases (Able, 1996). As Knell and Webberley (2004) point out, a host that behaves as if it were sick will not attract mates. Suppression of sickness behaviour may be critical for the ability of infected individuals to secure mating partners - an ability that is key for the transmission of any STI (Adamo, in review).

Sickness behaviour not only makes an individual less desirable as a mating partner, it reduces the mating effort of infected animals. For example, Jacot et al., (2004) found that immune activation reduces calling effort in male crickets (*Gryllus campestris*). A reduction in calling effort will reduce the number of mating partners it attracts (Gerhardt and Huber, 2002). Our results show that immune activation also decreases the ability of males to court any female that was attracted, further reducing the opportunity to contact another cricket. Mating rate is a key determinant of transmission for STIs (Webberley et al., 2006). Therefore, sickness behaviours would decrease transmission of an STI like HIV-6/CrIV. Suppression of other aspects of sickness behaviour, such as illness-induced anorexia, might also benefit an STI by preventing a decline in the availability of resources for pathogen reproduction. In mammals, STIs are more likely to be asymptomatic than other diseases (Lockhart et al., 1996; Mackey and Immerman, 2003; Antonovics et al., 2011), suggesting that the suppression of sickness behaviour may be widespread in STIs (Adamo, in review).

## Materials and Methods

### Animals

Crickets (long-winged *G. texensis*) were originally collected near Austin, Texas and have been maintained as a laboratory colony for many generations. Pellets of dry cat food and water were provided ad lib during rearing. Crickets were reared at 25 +/- 2°C on a 12/12h L/D cycle. All studies were approved by the Animal Care Committee of Dalhousie University (#I11-025) and are in accordance with the Canadian Council on Animal Care. Adult crickets were used between 8 and 21 days after the molt to adulthood. At this age they are sexually mature (Cade and Wyatt, 1984; Solymar and Cade, 1990) but still within their lifespan in the field (Murray and Cade, 1995). Illness-

induced anorexia studies were performed on last instar nymphs. All behavioural trials were conducted during mid-photophase.

Chemicals were obtained from Sigma Chemical Co. (St. Louis, MO, USA) unless otherwise noted.

#### Source of infected animals

Some females in our colony stopped laying eggs. On dissection these females exhibited a hypertrophic fat body with an iridescent blue sheen. The colony was quarantined. Uninfected animals were obtained from Dr. S. Bertram's colony at Carleton University in Ottawa, Canada. The animals from Dr. Bertram's colony were descended from animals shipped from our colony to her laboratory about two years previously, and, were therefore from the same genetic pool. The crickets from Dr. Bertram's colony were held under similar conditions to our infected colony, but in a separate room to prevent inadvertent infection. These animals were tested using PCR to confirm their uninfected status.

#### Identification of Virus

##### Electron Microscopy

Tissues to be processed for thin sectioning were dissected out into the primary fixative (3% glutaraldehyde/1% acrolein in 50mM sodium cacodylate buffer containing 250mM sucrose) and left at room temperature for 2 hrs. Postfixation was in 2% OsO<sub>4</sub> in the same buffer, followed by overnight staining in 0.1% aqueous uranyl acetate. Embedment was in epon/araldite resin, following dehydration in acetone. Micrographs were taken using a Jeol JEM 1230 electron microscope operating at 80 kV, using a 12 HR digital Hamamatsu C4742-51 camera.

To determine whether any common bacterial or fungal pathogens were contributing to the infection, we aseptically harvested fat body and hemolymph and plated these on nutrient agar plates.

#### PCR for molecular identification of the virus

Fat body, spermatheca (females), spermatophore and testes (males) were dissected under sterile conditions. During the dissection, the colour of the fat body, number of eggs in the lateral oviducts, and whether the spermatheca contained sperm were determined. Spermatophores were opened using fine dissecting scissors in about 200  $\mu$ L of phosphate buffered saline (PBS) and examined using phase contrast microscopy. Samples were frozen at -80 C until use.

DNA was extracted from thawed samples using a DNAeasy kit (Qiagen) following the manufacturer's instructions. Approximately 300 ng of DNA was used as a template in a 30  $\mu$ l PCR reaction, including 0.4  $\mu$ M of each primer, 0.2 mM dNTPs, 1.5 mM MgCl<sub>2</sub>, 1 $\times$ PCR buffer and 2U *Taq* polymerase (Fermentas, <http://www.fermentas.com>). Cycling was performed under the following conditions: 5 min at 95°C, 30 cycles of 1 min at 94°C, 1 min at 50°C, and 2 min at 72°C, followed by final extension at 72°C for 10 min. The forward and reverse primer sequences of the major capsid protein gene were PCRFOR: 5'-CCATTACATTTAATGATTTGG-3' and PCRREV: 5'-TTTTGACGTGGTGCAGTTTGAAC-3' and were taken from (Weinmann et al., 2007). PCR products were run on a 1.5% agarose gel in 0.5X Tris base/boric acid/EDTA buffer solution and stained with gel green following amplification with the Weinmann primers. PCR products were treated with ExoSap (Affymetrix, [USBtechsupport@affymetrix.com](mailto:USBtechsupport@affymetrix.com)) and a 510 bp amplicon was sent for sequencing. Mega 5 (<http://www.megasoftware.net/>) and Bioedit (<http://www.mbio.ncsu.edu/BioEdit/bioedit.html>) were used to edit sequence data and produce contiguous alignments. Homologous sequences were identified using BLAST searches (<http://blast.ncbi.nlm.nih.gov/>) with overlapping regions removed.

#### Identification of Viral Proteins in Hemolymph

Viral proteins were identified though sodium dodecyl sulfate polyacrylamide gel electrophoresis. 4  $\mu$ L of hemolymph was collected under sterile conditions from crickets using a 10  $\mu$ L automatic pipetter and an ice-cold pipetter tip flushed with anti-coagulant (0.15 M NaCl, 10 mM EDTA, 10 mM glutathione and a few crystals of phenothiocarbamide and protease inhibitor cocktail (enough to form a supersaturated solution)). The samples were placed in 12  $\mu$ L of phosphate buffer saline and frozen at -



80C until use. Each sample was diluted 1:2 using loading buffer with dithiothreitol and phenylthiocarbamide. The tubes were left to incubate in boiling water for 3 min. The samples were run in Mini-PROTEAN TGX Precast Gels (BioRad) at 150 V for 90 min. Proteins were visualized by silver staining (Swain and Ross, 2005). A strong band visible in the lanes of infected samples was sent out for sequencing (Proteomics Core Facility, Dalhousie University).

## Evidence for Sexual Transmission

To test whether the virus could also be transmitted via sexual contact, we placed infected male and female crickets with uninfected crickets. Infected and uninfected crickets were isolated into single containers (17cm x 15cm x 9.5cm) for at least one day prior to the mating trial. Both male and female crickets were transferred to a clean, fresh container (17cm x 15cm x 9.5cm) separated by a divider. Infected males were paired with uninfected females (n=6), and infected females were paired with uninfected males (n=4). After 1 min the divider was removed. The time to first contact was recorded, as was the time until the male began to sing (i.e. latency to singing). The time of each female mounting was also noted, as was the time of copulation, if any. We collected the fat body from crickets 10 days after the courtship trials described above. Klepsies et al., (1999) found that crickets began to die 2 weeks after infection. Four crickets (2 male and 2 female) acted as sentinels. They were housed in the same room, but did not participate in mating trials with infected crickets. Their fat body was collected at the same time. The harvested fat body was tested for virus using PCR as described above.

## Behavioural Effects

### Effects of Infection on Anti-Predator Behaviour

A modified plus maze was used to assess anti-predator behaviour (see Adamo et. al., 2013). Briefly, the plus maze was shaped like a plus sign and constructed of black acrylic. It consisted of 4 arms (14 x 8 x 6.5 cm each) and an open central area (8 x 8 x 6.5



cm). During the trial, two opposing arms were covered with heavy black bristle board, creating dark spaces underneath. Crickets were gently transferred from their home cage to the central, uncovered area. They remained under the transfer cup for 1 min. The cup was then removed and we measured the time the cricket remained motionless. We called this time period 'freezing'. Freezing is a stereotypic anti-detection response associated with predation avoidance across taxa (Stynoski & Noble 2012) including crickets (Niemelä et al., 2012). We also measured the number of times each cricket entered an arm of the plus maze as an assessment of its tendency to explore its environment. We measured the amount of time each cricket spent locomoting as a proxy for behavioural activity. We also measured the time it spent under covered arms to assess its tendency to avoid open spaces. The apparatus was cleaned with disinfectant between trials. The person scoring the trials was blind to the infection status of the cricket. There are no sex differences in plus maze performance (Adamo et al., 2013); therefore data from both sexes were pooled.

#### Effect of infection on sexual behaviour

We assessed the latency (time to singing) and duration of courtship behaviour in male and female infected and uninfected crickets. Infected and uninfected crickets were isolated into single containers (17cm x 15cm x 9.5cm) for at least one day prior to the mating trial. Both male and female crickets were transferred to a clean, fresh container (17cm x 15cm x 9.5cm) separated by a divider. After 1 min the divider was removed. The time to first contact was recorded, as was the time until the male began to sing. The time of each female mounting was also noted, as was the time of copulation, if any. If there was no mating after 40 min, crickets were re-tested with a fresh partner for a further 40 min.

We also tested whether an immune challenge affected the latency of healthy male crickets to produce courtship song. Male crickets were given a 2µL injection of heat-killed *S. marcescens* (approx  $1 \times 10^4$  cells) in sterile water, or acted as an unhandled control. Ninety minutes later, males were given mating trials with uninfected females as described

above. This time point was chosen because there is a clear physiological response (i.e. lipid release) ninety minutes after injection of heat-killed *S. marcescens* (Adamo et al., 2008).

#### Effect of infection on sickness behaviour (illness-induced anorexia)

Anecdotal observations suggested that virus-infected crickets showed normal behaviour until close to death. We tested whether infected crickets could express illness-induced anorexia, a robust response to immune activation in crickets (Adamo et al., 2010). The experiment followed the procedure of Adamo et al., (2010). Infected crickets were deprived of food, but not water, for 2 days. They were then given a 2µL injection of heat-killed *S. marcescens* (approx  $1 \times 10^4$  cells), a 2µL injection of sterile water, or acted as an unhandled control. Injections of heat-killed *S. marcescens* are known to induce illness-induced anorexia in this species (Adamo et al., 2010). One hour after injection, crickets were placed on one side of an experimental chamber (17cm x 15cm x 9.5cm) with a food pellet in the other, and the amount of time they spent feeding over the 30 min trial was recorded. These times were chosen based on the earlier study (Adamo et al., 2010). Adamo et al., (2010) found no effect of sex on illness-induced anorexia, so information on both sexes was pooled. The results were also compared with data collected on uninfected animals.

#### Physiological Effects – Evidence for Alteration of Immune Function.

##### Hemocyte Counts

Hemocyte counts were made by removing 4 µL of hemolymph from crickets using a 10 µL automatic pipetter and an ice-cold pipetter tip flushed with anti-coagulant (0.15 M NaCl, 10 mM EDTA, 10 mM glutathione and a few crystals of phenothiocarbamide and protease inhibitor cocktail (enough to form a supersaturated solution)). Hemolymph was transferred to 200 µL of ice-cold anti-coagulant, gently mixed, and then a 10 µL sample was placed on a Fuchs-Rosenthal counting chamber within 1 min of collection. Cells

were counted using phase-contrast microscopy. Hemocyte number does not differ between the sexes (Adamo, 2010); therefore results from males and females were pooled.

#### Total Hemolymph Protein and Phenoloxidase Activity

To measure the total protein content of the hemolymph, 4 $\mu$ L of hemolymph was removed as described previously from both infected and uninfected crickets. The hemolymph was added to 60  $\mu$ L of ice-cold phosphate buffered saline and immediately vortexed for 5 s. 10  $\mu$ L of the hemolymph/saline mixture described above was added to 180  $\mu$ l of Bradford reagent in a 96 well plate. After a 15 min incubation with the reagent, the absorbance was read at 590 nm. Each assay was run with standards of bovine serum albumen.

Phenoloxidase activity was measured using a method modified from Bidochka et al., (1989). 4 $\mu$ L of hemolymph was removed as described previously from both infected and uninfected crickets. 15  $\mu$ L of the hemolymph/saline mixture (see above) was transferred to a tube containing 20  $\mu$ L of water. Cricket hemolymph rarely exhibits any spontaneous activity (Adamo, 2004) and this tube provides a baseline measure. A further 15  $\mu$ L of the hemolymph/saline mixture was added to a tube of 20  $\mu$ L of bovine pancreas alpha chymotrypsin (1.2 mg/mL) dissolved in water. The chymotrypsin converts prophenoloxidase into the active form (Adamo, 2004). This tube provides an estimate of the maximal potential activity. Another 15  $\mu$ L of the hemolymph/saline mixture was added to 18  $\mu$ L of water and 2  $\mu$ L of heat-killed *S. marcescens*. This tube assesses the amount of activation of prophenoloxidase during an immune challenge *in vitro*. The tubes were left to incubate at room temperature for 20 min. After the incubation period, tubes were centrifuged at room temperature at 10,000 for 5 min. 30  $\mu$ L of supernatant was added to 180  $\mu$ L of 0.02 M L-Dopa in a 96 well plate. After mixing, the change in absorbance at 490 nm was monitored for 20 min. Preliminary studies showed that this was within the linear range of this assay. Standards using mushroom tyrosinase were run as well on the same plate.

#### Statistics

Statistics were performed using IBM SPSS Statistics (ver. 19) and GraphPad Prism (ver. 5.0b, GraphPad Software, La Jolla, CA, USA). A principal components analysis (PCA) was performed on the plus maze behavioural measures (locomotion, time spent freezing, the number of arm entries and the time spent in the covered arms) as described previously (Adamo et al., 2013). Only the first component of the PCA had an eigenvalue above 1 (score=2.1) and it explained 70% of the total variance (n=23 crickets). The validity of the PCA was shown by the measure of sampling adequacy (Kaiser-Meyer-Olkin=0.46) and a highly significant Bartlett's test of sphericity ( $p < 0.0001$ ). The first component of the PCA was used as a summary anti-predator score. Data were tested for normality; normally distributed data were tested with parametric statistics. Non-normal data were analyzed using non-parametric statistics (Meddis, 1984). Non-parametric tests were also used for analyses in which at least one of the treatment groups had a sample size less than 6; Meddis (1984) argue that sample sizes smaller than this cannot be adequately tested for a normal distribution.

#### Acknowledgements

We thank J. Beach, K. Bradley, E. Fairn and N. Parsons for assistance with behavioural trials. We thank A. Cohen for assistance with protein identification using LC-MS/MS.

#### Funding

This study was funded by NSERC (Natural Sciences and Engineering Research Council of Canada) grants to SAA and DS.

#### Author Contributions

S. Adamo generated the hypothesis, designed the study, analyzed the data and wrote the paper. I. Kovalko helped design and perform the behavioural assays, performed the PCR analysis, and critically read the paper. R. Easy designed and helped perform the PCR

analysis and critically read the paper. D. Stoltz performed and analyzed the EM study and helped edit the paper.

## References

**Able, D. J.** (1996). The contagion indicator hypothesis for parasite-mediated sexual selection. *Proceedings of the National Academy of Sciences of the United States of America* **93**, 2229-2233.

**Adamo, S. A.** (in review). Parasitic aphrodisiacs: Manipulation of host behavioral defenses by sexually transmitted parasites. *Integrative and Comparative Biology*.

**Adamo, S. A.** (1999). Evidence for adaptive changes in egg-laying in crickets exposed to bacteria and parasites. *Animal Behaviour* **57**, 117-124.

**Adamo, S. A.** (2004). Estimating disease resistance in insects: phenoloxidase and lysozyme-like activity and disease resistance in the cricket *Gryllus texensis*. *Journal of Insect Physiology* **50**, 209-216.

**Adamo, S. A.** (2008). Bidirectional connections between the immune system and the nervous system in insects. In *Insect Immunology*, (ed. N. E. Beckage), pp. 129-149. San Diego: Academic Press.

**Adamo, S. A.** (2010). Why should an immune response activate the stress response? Insights from the insects (the cricket *Gryllus texensis*). *Brain, Behavior and Immunity* **24**, 194-200.

**Adamo, S. A.** (2012). The strings of the puppet master: How parasites change host behaviour. In *Parasitic Manipulation*, eds. D. Hughes and F. Thomas): Oxford University Press.

**Adamo, S. A.** (2013). Parasites: Evolution's neurobiologists. *Journal of Experimental Biology* **216**, 3-10.

**Adamo, S. A. and Baker, J. L.** (2011). Conserved features of chronic stress across phyla: The effects of long-term stress on behavior and the concentration of the neurohormone octopamine in the cricket, *Gryllus texensis*. *Hormones and Behavior* **60**, 478-483.

**Adamo, S. A., Bartlett, A., Le, J., Spencer, N. and Sullivan, K.** (2010). Illness-induced anorexia may reduce trade-offs between digestion and immune function. *Animal Behaviour* **79**, 3-10.

**Adamo, S. A. and Hoy, R. R.** (1994). Mating behaviour of the field cricket, *Gryllus*

*bimaculatus* and its dependence on social and environmental cues. *Animal Behaviour* **47**, 857-868.

**Adamo, S. A., Kovalko, I. and Mosher, B.** (2013). The behavioural effects of predator-induced stress responses in the cricket (*Gryllus texensis*): the upside of the stress response. *Journal of Experimental Biology* **216**, 4608-4614.

**Adamo, S. A., Roberts, J. L., Easy, R. H. and Ross, N. W.** (2008). Competition between immune function and lipid transport for the protein apolipoprotein III leads to stress-induced immunosuppression in crickets. *Journal of Experimental Biology* **211**, 531-538.

**Antonovics, J., Boots, M., Abbate, J., Baker, C., McFrederick, Q. and Panjeti, V.** (2011). Biology and evolution of sexual transmission. In *Evolution of Infectious Agents in Relation to Sex*, vol. 1230 eds. A. Nahmias D. Danielsson and S. B. Nahmias), pp. 12-24. Oxford: Blackwell Science Publ.

**Bidochka, M. J., Gillespie, J. P. and Khachatourians, G. G.** (1989). Phenoloxidase activity of acridid grasshoppers from the subfamilies of Melanoplinae and Oedipodinae. *Comparative Biochemistry and Physiology* **94B**, 117-124.

**Burand, J. P., Kim, W. J., Afonso, C. L., Tulman, E. R., Kutish, G. F., Lu, Z. and Rock, D. L.** (2012). Analysis of the genome of the sexually transmitted insect *Helicoverpa zea* Nudivirus 2. *Viruses* **4**, 28-61.

**Burand, J. P., Rallis, C. P. and Tan, W. J.** (2004). Horizontal transmission of Hz-2V by virus infected *Helicoverpa zea* moths. *Journal of Invertebrate Pathology* **85**, 128-131.

**Burand, J. P. and Tan, W. J.** (2006). Mate preference and mating behavior of male *Helicoverpa zea* (Lepidoptera : Noctuidae) infected with the sexually transmitted insect virus Hz-2V. *Annals of the Entomological Society of America* **99**, 969-973.

**Burand, J. P., Tan, W. J., Kim, W. J., Nojima, S. and Roelofs, W.** (2005). Infection with the insect virus Hz-2v alters mating behavior and pheromone production in female *Helicoverpa zea* moths. *Journal of Insect Science* **5**.

**Cade, W. H. and Cade, E. S.** (1992). Male mating success, calling and searching behavior at high and low-densities in the field cricket, *Gryllus integer*. *Animal Behaviour* **43**, 49-56.

**Cade, W. H. and Otte, D.** (2000). *Gryllus texensis* n. sp.: A widely studied field cricket (Orthoptera; Gryllidae) from the southern United States. *Transactions of the American*

*Entomological Society* **126**, 117-123.

**Cade, W. H. and Wyatt, D.** (1984). Factors affecting calling behaviour in field cricket *Teleogryllus* and *Gryllus* (age, weight, density and parasites). *Behaviour* **88**, 61-75.

**Chapman, R. F.** (1998). *The Insects*. Cambridge: Cambridge University Press.

**Dantzer, R., O'Connor, J. C., Freund, G. G., Johnson, R. W. and Kelley, K. W.** (2008). From inflammation to sickness and depression: when the immune system subjugates the brain. *Nature Reviews Neuroscience* **9**, 46-57.

**Dass, S. A. H., Vasudevan, A., Dutta, D., Soh, L. J. T., Sapolsky, R. M. and Vyas, A.** (2011). Protozoan Parasite *Toxoplasma gondii* Manipulates Mate Choice in Rats by Enhancing Attractiveness of Males. *Plos One* **6**.

**de Roode, J. C. and Lefèvre, T.** (2012). Behavioral immunity in insects. *Insects* **3**, 789-820.

**Gerhardt, H. C. and Huber, F.** (2002). *Acoustic communication in insects and anurans*. Chicago: University of Chicago Press.

**Goodacre, S. L. and Martin, O. Y.** (2012). Modification of insect and arachnid behaviours by transmitted endosymbionts: infections as drivers of behavioural change and evolutionary novelty. *Insects* **3**, 246-261.

**Hart, B. L.** (1988). Biological basis of the behavior of sick animals. *Neuroscience and Biobehavioral Reviews* **12**, 123-137.

**Hunter, W. B., Lapointe, S. L., Sinisterra, X. H., Achor, D. S. and Funk, C. J.** (2003). Iridovirus in the root weevil *Diaprepes abbreviatus*. *Journal of Insect Science* **3**, 1-6.

**Jacot, A., Scheuber, H. and Brinkhof, M. W. G.** (2004). Costs of an induced immune response on sexual display and longevity in field crickets. *Evolution* **58**, 2280-2286.

**Jakob, N. J., Kleepsies, R. G., Tidona, C. A., Müller, K., Gelderblom, H. R. and Darai, G.** (2002). Comparative analysis of the genome and host range characteristics of two insect iridoviruses: Chilo iridescent virus and cricket iridovirus isolate. *Journal of General Virology* **83**, 463-470.

**Just, F. T. and Essbauer, S. S.** (2001). Characterization of an iridescent virus isolated from *Gryllus bimaculatus* (Orthoptera: Gryllidae). *Journal of Invertebrate Pathology* **77**, 51-61.

**Kamimura, M.** (2012). ENF Peptides. In *Hemolymph Proteins and Functional Peptides: Recent Advances in Insects and Other Arthropods*, vol. 1 eds. M. Tufail and M. Takeda), pp.



172-182. Danvers, MA: Bentham Science Publishers.

**Kemp, C. and Imler, J. L.** (2009). Antiviral immunity in *Drosophila*. *Current Opinion in Immunology* **21**, 3-9.

**Kleepsies, R. G., Tidona, C. A. and Darai, G.** (1999). Characterization of a new iridovirus isolated from crickets and investigations on the host range. *Journal of Invertebrate Pathology* **73**, 84-90.

**Knell, R. J. and Webberley, K. M.** (2004). Sexually transmitted diseases of insects: distribution, evolution, ecology and host behaviour. *Biological Reviews* **79**, 557-581.

**Lefèvre, T., Adamo, S. A., Biron, D. G., Missé, D., Hughes, D. and Thomas, F.** (2009). Invasion of the Body Snatchers: the diversity and evolution of manipulative strategies in host-parasite interactions. *Advances in Parasitology* **68**, 45-84.

**Lockhart, A. B., Thrall, P. H. and Antonovics, J.** (1996). Sexually transmitted diseases in animals: Ecological and evolutionary implications. *Biological Reviews of the Cambridge Philosophical Society* **71**, 415-471.

**Loher, W. and Dambach, M.** (1989). Reproductive Behavior. In *Crickets Behavior and Neurobiology*, eds. F. Huber T. E. Moore and W. Loher), pp. 43-82. Ithaca, NY: Cornell University Press.

**MacKey, W. C. and Immerman, R. S.** (2003). A proposed feedback loop of sexually transmitted diseases and sexual behavior: The Red Queen's Dilemma. *Social Biology* **50**, 281-299.

**Meddis, R.** (1984). Statistics using ranks: a unified approach. New York: Blackwell.

**Murray, A. M. and Cade, W. H.** (1995). Differences in age structure among field cricket populations (Orthoptera: Gryllidae): possible influence of a sex-biased parasitoid. *Canadian Journal of Zoology* **73**, 1207-1213.

**Niemelä, P. T., DiRienzo, N. and Hedrick, A. V.** (2012). Predator-induced changes in the boldness of naive field crickets, *Gryllus integer*, depends on behavioural type. *Animal Behaviour* **84**, 129-135.

**Poulin, R.** (2010). Parasitic manipulation of behavior: An update and frequently asked questions. *Advances in the Study of Behavior* **41**, 151-186.

**Shelby, K. S. and Popham, H. J. R.** (2007). Plasma phenoloxidase of the larval tobacco budworm, *Heliothis virescens*, in virucidal. *Journal of Insect Science* **6**, 1-12.



- 712       **Shoemaker, K. L., Parsons, N. M. and Adamo, S. A.** (2006). Egg-laying behaviour  
713 following infection in the cricket *Gryllus texensis*. *Canadian Journal of Zoology* **84**, 412-418.
- 714       **Solyman, B. and Cade, W. H.** (1990). Age of first mating in field crickets, *Gryllus*  
715 integer (Orthoptera: Gryllidae). *Florida Entomologist* **73**, 193-195.
- 716       **Stynoski, J. L. and Noble, V. R.** (2012). To beg or to freeze: multimodal sensory  
717 integration directs behavior in a tadpole. *Behavioral Ecology and Sociobiology* **66**, 191-199.
- 718       **Swain, M. and Ross, N. W.** (2005). A silver stain protocol for proteins yielding  
719 high resolution and transparent background in sodium dodecyl sulfate-polyacrylamide  
720 gels. *Electrophoresis* **16**(1), 948-951.
- 721       **van Houte, S., Ros, V. I. D. and van Oers, M. M.** (2013). Walking with insects:  
722 molecular mechanisms behind parasitic manipulation of host behaviour. *Molecular Ecology* **22**,  
723 3458-3475.
- 724       **Ward, N.** (2010). Austin Climate Data. In *UTSoA-Meadows Fellowship Seminar*, (ed. C.  
725 f. S. Development), pp. 1-9. Austin, Texas: University of Texas at Austin, School of  
726 Architecture.
- 727       **Webberley, K. M., Buszko, J., Isham, V. and Hurst, G. D. D.** (2006). Sexually  
728 transmitted disease epidemics in a natural insect population. *Journal of Animal Ecology* **75**, 33-  
729 43.
- 730       **Weinmann, N., Papp, T., de Matos, A. P. A., Teifke, J. P., and Marschang, R. E.**  
731 (2007). Experimental infection of crickets (*Gryllus bimaculatus*) with an invertebrate iridovirus  
732 isolated from a high-casqued chameleon (*Chamaeleo hoehnelii*). *Journal of Veterinary*  
733 *Diagnostic Investigation* **19**, 674-679.
- 734       **Williams, T., Barbosa-Solomieu, V. and Chinchar, V. G.** (2005). A decade of  
735 advances in iridovirus research. *Advances in Virus Research* **65**, 173-248.
- 736       **Williams, T. and Hernandez, O.** (2006). Costs of cannibalism in the presence of an  
737 iridovirus pathogen of *Spodoptera frugiperda*. *Ecological Entomology* **31**, 106-113.
- 738
- 739
- 740
- 741
- 742

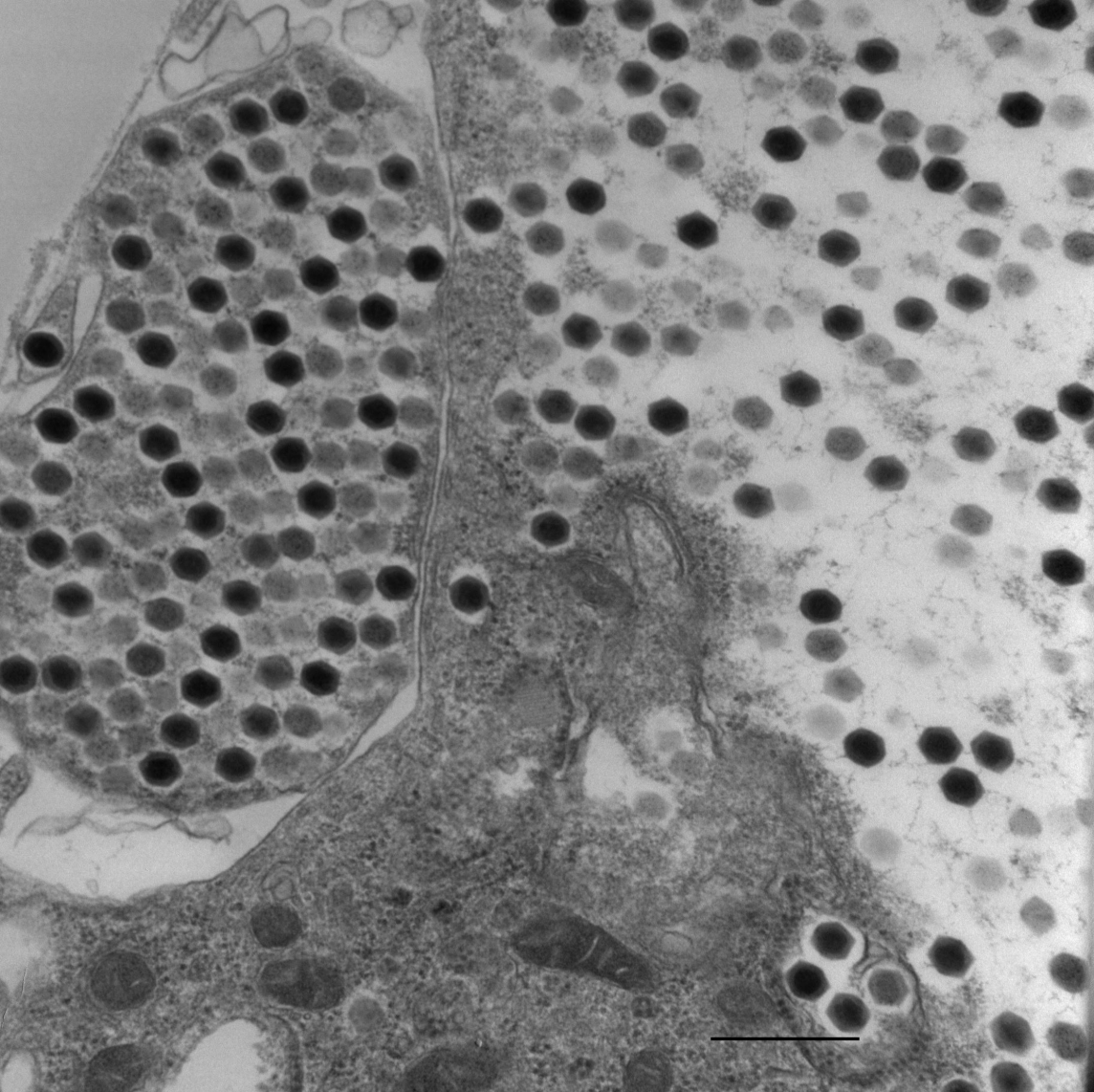
Figure Legends.

**Figure 1. Cytoplasm of fat body cell infected with IIV-6/CrIV virus.** The scale bar represents 500 nm.

**Figure 2. Infected males have a shorter latency to sing than controls.** The bars denote means, and the error bars represent standard error of the mean. Pre-Con were uninfected crickets tested prior to the infection entering the colony. Pre-Con+Sh were uninfected sham challenged crickets tested prior to the infection entering the colony. Pre-Con+Bac were uninfected, immune challenged crickets tested prior to the infection entering the colony

**Figure 3. Infected crickets showed no evidence of illness-induced anorexia.** Bars denote means and error bars denote standard error of the mean. All values were normalized against the average time uninfected crickets spent feeding. Inf=infected. Pre-Con were uninfected crickets tested prior to the infection entering the colony. Pre-Con+Bac were uninfected, immune challenged crickets tested prior to the infection entering the colony.

**Figure 4. Infected crickets had lower total phenoloxidase activity.** Bars denote means and error bars represent standard error of the mean.



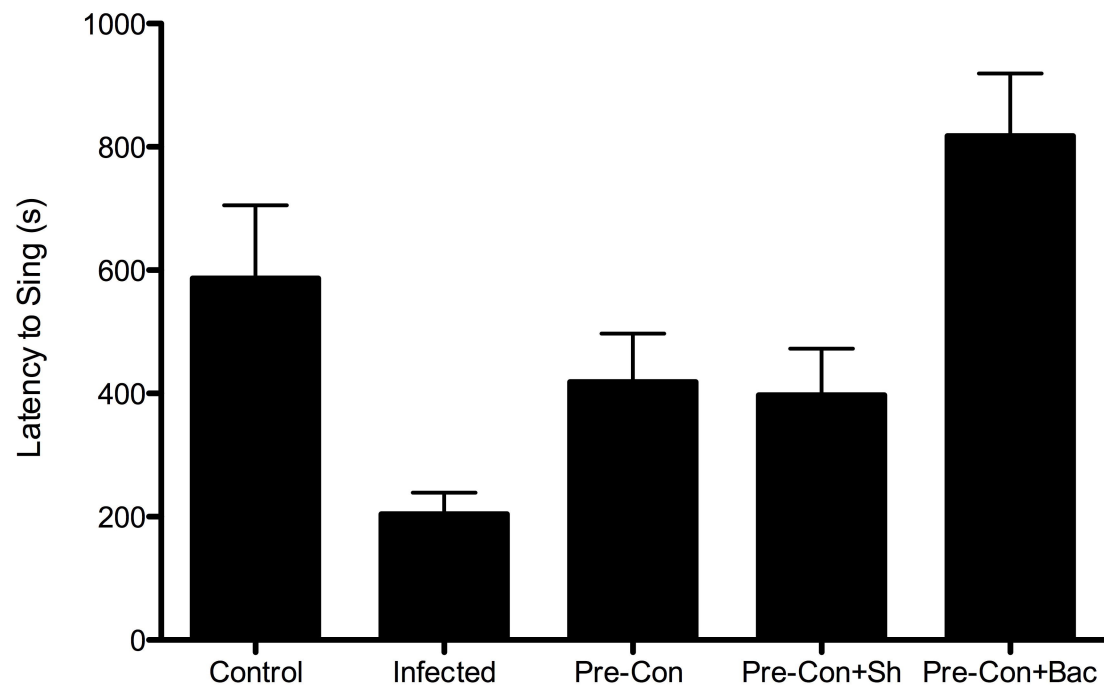


Fig. 2

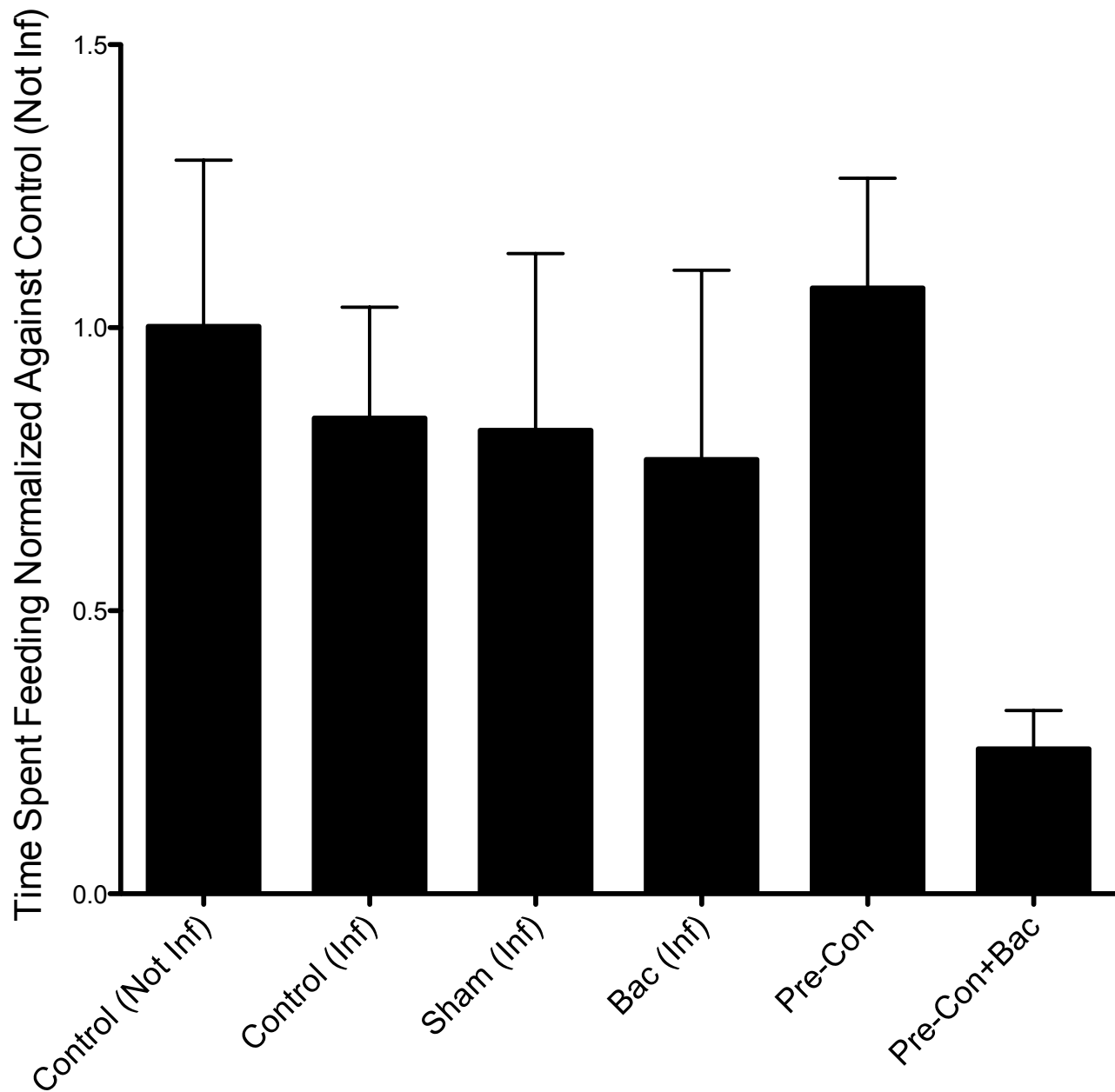


Fig. 3

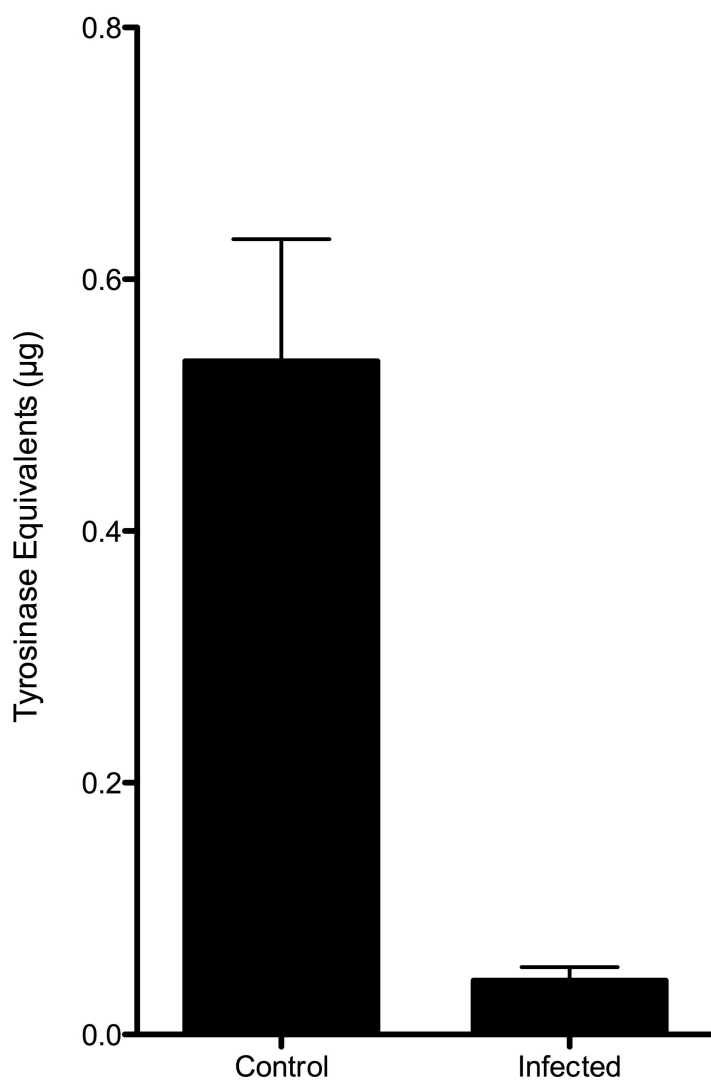


Fig. 4