

RESEARCH ARTICLE

A statistical approach to understanding reproductive isolation in two sympatric species of tree crickets

Monisha Bhattacharya^{*,‡}, Kavita Isvaran and Rohini Balakrishnan[‡]

ABSTRACT

In acoustically communicating animals, reproductive isolation between sympatric species is usually maintained through species-specific calls. This requires that the receiver be tuned to the conspecific signal. Mapping the response space of the receiver onto the signal space of the conspecific investigates this tuning. A combinatorial approach to investigating the response space is more informative as the influence on the receiver of the interactions between the features is also elucidated. However, most studies have examined individual preference functions rather than the multivariate response space. We studied the maintenance of reproductive isolation between two sympatric tree cricket species (*Oecanthus henryi* and *Oecanthus indicus*) through the temporal features of the calls. Individual response functions were determined experimentally for *O. henryi*, the results from which were combined in a statistical framework to generate a multivariate quantitative receiver response space. The predicted response was higher for the signals of the conspecific than for signals of the sympatric heterospecific, indicating maintenance of reproductive isolation through songs. The model allows prediction of response to untested combinations of temporal features as well as delineation of the evolutionary constraints on the signal space. The model can also be used to predict the response of *O. henryi* to other heterospecific signals, making it a useful tool for the study of the evolution and maintenance of reproductive isolation via long-range acoustic signals.

KEY WORDS: Reproductive isolation, Response function, Multivariate response space, *Oecanthus*, Statistical modelling, Temporal features

INTRODUCTION

Reproductive isolation is essential between sympatric species in order to avoid heterospecific matings, which typically result in either no or sterile offspring (Futuyma, 1998; Mayr, 1963). Various pre- and post-copulatory mechanisms exist to ensure reproductive isolation. The pre-copulatory mechanisms ensure that time and effort are not wasted in approaching inappropriate heterospecific mates. For example, in animals that signal their presence and mating status to their mates, the signals themselves may be species specific (Mayr, 1963). Thus it is also essential in signalling species that the receiver recognizes the conspecific signal as its own.

Signallers may employ various strategies to avoid heterospecific signal overlap such as partitioning themselves in time or space. For example, acoustically calling species may call at different seasons, or within a season may call at different times of the day to avoid overlap with heterospecifics (Brumm and Slabbekoorn, 2005; Gottsberger and Gruber, 2004; Greenfield, 1988). Signallers who overlap in their calling period can also partition themselves in space. Animals could distribute themselves in different vertical strata (Diwakar and Balakrishnan, 2007; Hödl, 1977; Sueur, 2002) or in different microhabitats to avoid signal overlap (Hödl, 1977).

Especially for sympatric species that are not partitioned in either time or space, receivers need to recognize the conspecific signal and respond specifically to it (Ryan, 1988). To attract mates, males of orthopteran and anuran species employ species-specific calls (Alexander, 1967). The correct recognition of these calls by potential mates is therefore of primary importance. Among the various temporal features, the micro-temporal feature pulse rate has been indicated to be most important in call recognition (Popov and Shuvalov, 1977; Schildberger, 1984; Thorson et al., 1982; Walker, 1957; Weber et al., 1981). That there was more complexity to the phenomenon was soon shown (Doherty, 1985; Huber et al., 1989). Macro-temporal features such as chirps were also subsequently demonstrated to play a role in call recognition (Gerhardt and Doherty, 1988). Various studies since have shown that both macro- and micro-temporal features play a role in call recognition (Clemens and Hennig, 2013; Hennig and Weber, 1997; Hennig et al., 2014; Pollack and Hoy, 1979). How call pattern recognition might actually take place neurologically has also been investigated (Meckenhäuser et al., 2013; Pollack, 2001). Among the various neurologically driven questions, whether an AND or OR gate exists between the pattern recognizers of macro- and micro-temporal features has been a subject of study (Grobe et al., 2012; Rothbart and Hennig, 2012).

From the characteristics of the features themselves, various hypotheses have been postulated for signal recognition. One such hypothesis, the invariant feature hypothesis (Emlen, 1972; Falls, 1963; Marler, 1960; Nelson and Marler, 1990) predicts that the features of the signal that have low intra-species variance would be the ones used for signal recognition. These features would be least likely to overlap with the signals of the heterospecifics. In contrast to this, the sound environment hypothesis (Bremond, 1976; Brémond, 1978; Dabelsteen and Pedersen, 1985; Emlen, 1972; Marler, 1960; Nelson and Marler, 1990) predicts that the features, which best separate the signals of one species from those of other species, would be the ones most likely to be used for signal recognition. The features may or may not show low variance. A characterization of the signal spaces of the conspecific and the heterospecifics would generate predictions as to which feature seems most likely to be used in species recognition. However, to determine this would require one to study the perception of the receivers.

How the receiver perceives and recognizes the conspecific call can be studied by examining the tuning of the receiver to the various

Centre for Ecological Sciences, Indian Institute of Science, Bangalore, Karnataka 560012, India.

^{*}Present address: Simons Centre for Living Machines, National Centre for Biological Sciences, Tata Institute of Fundamental Research, Bellary Road, Bangalore, Karnataka 560065, India.

[‡]Authors for correspondence (bmonisha@ncbs.res.in; rohini@ces.iisc.ernet.in)

 M.B., 0000-0003-3717-7996

Received 4 August 2016; Accepted 9 January 2017

temporal and spectral features. The tuning of the receiver to the signal can be elucidated by studying the preference functions. The preference function describes the variation in the response of the receiver to variation in the signal (Gerhardt et al., 2000; Ritchie, 1996; Wagner et al., 1995). Recognition of conspecifics is thus dictated by preference functions for the various features of the signal. Various studies have enumerated such individual preferences (Ryan and Keddy-Hector, 1992). Many studies have investigated the preference functions for individual features. Across several studies on insects and anurans, preference functions for dominant frequency and syllable period have been found to be stabilizing (Gerhardt, 1991; Gerhardt and Huber, 2002; Shaw and Herlihy, 2000), while those for chirp period and chirp duration have been found to be directional (Gerhardt, 1991; Ryan and Keddy-Hector, 1992). Usually a stabilizing preference indicates that the particular feature is used for species recognition, while a directional preference indicates that the feature plays a role in mate choice (Paterson, 1985).

Other studies have investigated the problem of species recognition using a combinatorial approach, incorporating receiver response based on various features of an acoustic signal. Studying preference functions for a combination of features of a song is necessary to understand the dynamics of tuning of a species to its conspecific call. When the responses to different component features of a signal are analysed combinatorially, the manner in which one feature modifies response to another feature and the amount of influence each feature has on the receiver become apparent. Although a combinatorial statistical approach can be applied in various ways [generalized additive model (GAM): Amezquita et al., 2011; Bentsen et al., 2006; canonical analysis: Brooks et al., 2005; Gerhardt and Brooks, 2009; second-order polynomial regression: Hennig et al., 2016; multidimensional scaling: Ryan et al., 2003], we chose in this study to examine it using a generalized linear mixed model (GLMM) framework. The advantage of a GLMM framework is that, like other linear modelling approaches, it affords us a predictive model. The model essentially gives an equation predicting the response of the animal to the various features incorporated. After obtaining such an equation, various values of the explanatory features can be incorporated to check how the response gets modified. Thus feature values of heterospecifics can be incorporated and response to feature values from different populations of the conspecific can be examined. The equation obtained from a GLMM analysis also informs about the relative weight associated with each feature in determining the overall response.

The pair of species we investigated in this paper are *Oecanthus henryi* and *Oecanthus indicus*. These are sympatric tree cricket species found in the same habitat, during the same season of the year and with similar activity periods (Metrani and Balakrishnan, 2005). *Oecanthus henryi* and *O. indicus* calling songs overlap significantly in their respective carrier frequencies (Metrani and Balakrishnan, 2005). The two species thus provide an ideal system to study pre-copulatory reproductive isolation through acoustic communication. The response of *O. henryi* females to male calling song based on the carrier frequency was found to be broadly tuned for the entire natural range of carrier frequencies (Mhatre et al., 2011). Such a broad tuning to a range of carrier frequencies that encompasses the heterospecific values (*O. indicus* calling song) implies that *O. henryi* females are unable to distinguish between the signals of *O. henryi* and *O. indicus* using spectral features. Temporal features of the signal may therefore be more important for species recognition and reproductive isolation.

The response space for a species can take various shapes when plotted along with the signals of the conspecific and heterospecific

(Ryan and Rand, 2001). The response space may be (1) confined to the signal space of the conspecific, (2) encompass both the conspecific and heterospecific signal space, (3) show more preference to the conspecific and reduced but some response to the heterospecific, or (4) show more preference to the heterospecific and reduced response to the conspecific (Ryan and Rand, 2001).

In this paper we have investigated reproductive isolation between *O. henryi* and *O. indicus* based on their calling songs and receiver response spaces. We chose three temporal features, chirp period, chirp duration and syllable period (Fig. 1) for studying *O. henryi* female response to the calling song. Response functions were generated separately for the three temporal features using playback experiments. A response space was then generated for *O. henryi* females by statistical modelling, integrating the information from the individual response functions. By superimposing the signal spaces of *O. henryi* and *O. indicus* on the predicted response space of *O. henryi* we examined how the predicted response probability of *O. henryi* females changed between the signal spaces of the conspecific and the heterospecific. We argue that such quantitative models are important to study reproductive isolation based on song as they incorporate information on responses to several different acoustic features of the signal, and also allow for prediction of responses to novel combinations of features.

MATERIALS AND METHODS

Study system

Oecanthus henryi Chopard 1936 and *Oecanthus indicus* Saussure 1878 are tree cricket species found in Southern India (Chopard, 1969; Metrani and Balakrishnan, 2005). The animals are found on bushes of the aromatic weed *Hyptis suaveolens* (Deb et al., 2012; Mhatre et al., 2011). The animals were collected from *Hyptis suaveolens* bushes in fields near the village of Ulloodu, situated near Bangalore, India (13°38'27"N, 77°42'0"E).

Females were caught in the nymphal stage and reared in the laboratory to the final moult. After the final moult, each female was transferred to an individual plastic box (8 cm in diameter and 5 cm in height) with a perforated lid to ensure virginity. The females were used in experiments 15–21 days after the final moult. Virgin females were used in the experiments to ensure high motivation for phonotaxis. Animals were fed *ad libitum* on apple pieces and maintained on the natural night–day cycle at room temperature. Animal handling for behavioural experiments was done in accordance with national guidelines for the ethical treatment of animals.

Phonotaxis experiments

Experiments were conducted over a period of one year, from April 2013 to April 2014. Experiments were conducted indoors in an anechoic room (2.9 m×2.75 m×3.1 m) from 18:45 h to 21:15 h (the active period of animals in the field). The phonotaxis experimental set-up consisted of stripped down branches of *Hyptis suaveolens* arranged in the shape of a T. The T was placed vertically on the ground so that the horizontal part of the T was 60 cm above the ground. Two loudspeakers (X-mini Capsule Speaker V1.1, Xmi Pte Ltd, Singapore) were placed at the horizontal ends of the T (120 cm apart). The vertical branch of the T was placed so that it bisected the horizontal branch at its midpoint, thus the junction was 60 cm from the ends of the horizontal branch of the T [see (Mhatre et al., 2011) for details].

For each trial the animal was released at the bottom of the T. Single speaker playback experiments were conducted, where only one of the two speakers was active at a given time. The mute speaker at the other end was placed to check for directional bias. We performed

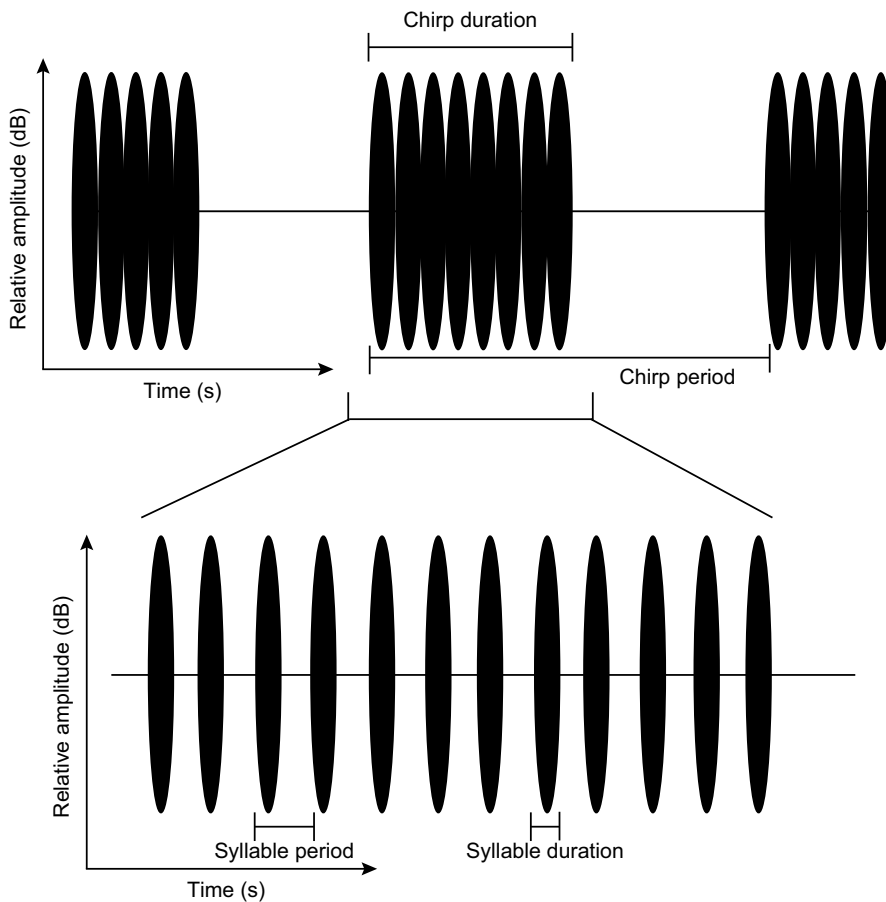


Fig. 1. The temporal features of a cricket song.

Macro-temporal features: chirp period: the time between the start of one chirp and the start of the subsequent chirp; chirp duration: the time from start to end of one chirp. Micro-temporal features: syllable period: the time between the start of one syllable and the start of the subsequent one; syllable duration: the time from start to end of one syllable.

experiments with a no-choice paradigm as previous data from the wild have indicated that female *O. henryi* perform sequential rather than simultaneous mate sampling (Deb and Balakrishnan, 2014). In such scenarios, to experimentally elucidate the response function, a no-choice paradigm is preferable (Gerhardt and Huber, 2002). Stimuli were played back at a sound pressure level (SPL) of 61 dB (re $2 \times 10^{-5} \text{ Nm}^2$) as measured from the junction of the T using a Brüel and Kjær SPL meter (type 2250, Brüel and Kjær $\frac{1}{2}$ in microphone type 4189; Brüel and Kjær Sound and Vibration Measurement A/S, Nærum, Denmark). A trial was scored as positive if the animal reached the playback speaker within 180 s from release. The experiments were conducted in complete darkness and responses were recorded with an IR-sensitive video camera (HDR-CX730E, Sony Corporation, Tokyo, Japan). The anechoic room was maintained at a temperature of 25°C ($\pm 1^\circ\text{C}$), the mean ambient temperature in the field. Throughout the duration of the experiments the temperature in the room was monitored with a temperature meter (Testo 110, Testo AG, Lenzkirch, Germany); a room heater and an air-conditioner (LG, Seoul, Korea) were used to regulate the temperature as and when required. Animals were transferred into the temperature-controlled anechoic room at least an hour before the commencement of the experiments, to acclimatize them to the ambient temperature of the room.

Acoustic stimuli

Five sets of experiments were conducted to study response functions. While the temporal features of the calls were varied as per the treatment, the spectral feature (carrier frequency) was kept constant at the value for 25°C, which is 3000 Hz for all the treatments. All calls were synthesized using MATLAB 6.5 (The

MathWorks Inc., Natick, MA, USA). A representative syllable of the natural song at 25°C was used to generate the envelope. The envelope was then used to synthesize a syllable at the chosen carrier frequency (3000 Hz). This syllable was repeated at different rates by modifying the intervals between the syllables to generate chirps containing different syllable periods (Fig. 1). Different chirp durations were achieved by modifying the number of syllables in a chirp. Modifying the intervals between successive chirps generated the required chirp periods.

For each of five sets an independent group of animals was tested. Within a set, a repeated measures design was followed, in which each animal was tested in all the treatments of a given set. Each set for an animal was completed on a single night. Between two trials on the same animal, a gap of at least 10 min was maintained. Stimuli were presented to the animals in random order.

Macro- versus micro-temporal features

The first set of experiments was designed to determine whether the macro- or micro-temporal features were more important for signal recognition in *O. henryi*. For this set of experiments, six stimuli were created. The first stimulus (Hen) of this set was a representative conspecific *O. henryi* call (Table S1), which served as the positive control. The second (Ind) was a representative *O. indicus* call (Table S1). For the next four stimuli the micro-temporal features (syllable period and syllable duration) and macro-temporal features (chirp period and chirp duration) of the calls of *O. henryi* and *O. indicus* were interchanged to create novel stimuli (Table S1, Fig. 2). The first three stimuli had the micro-temporal features of *O. henryi*, and the macro-temporal features of *O. indicus*. The first (HImed) of these three stimuli had chirp period (CP) and chirp

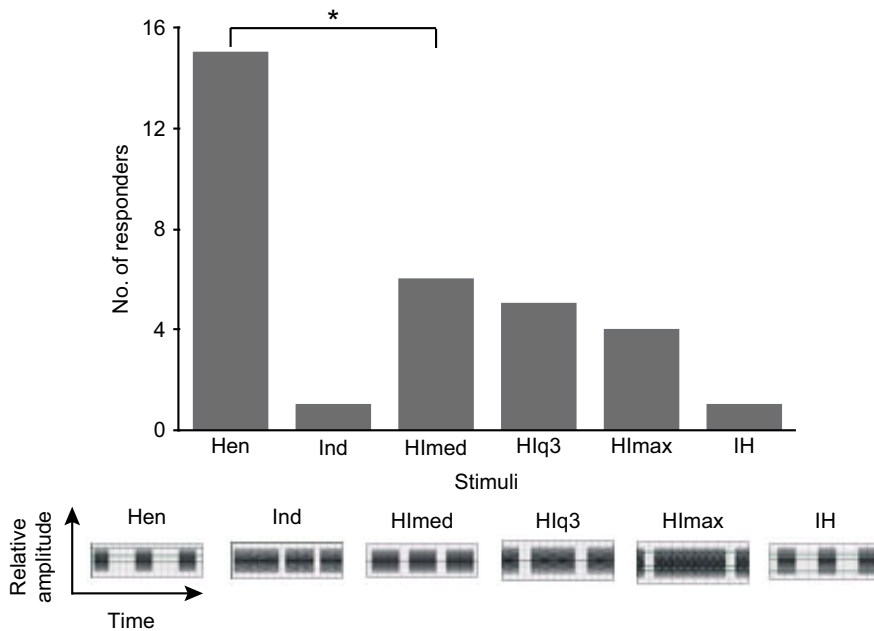


Fig. 2. The importance of macro- versus micro-temporal features for female recognition of *O. henryi* song ($N=15$). The bottom panel shows oscillograms of the stimuli. Hen: call of *O. henryi* (positive control); In: call of *O. indicus* (negative control); HImed, HIq3, HImax: calls with the macro-temporal features of *O. indicus* and the micro-temporal features of *O. henryi*; IH: call with the macro-temporal features of *O. henryi* and the micro-temporal features of *O. indicus*. See Materials and methods for details.

duration (CD) close to the median values found for *O. indicus* at 25°C (median CP=720.3 ms, median CD=480 ms), the second (HIq3) had values that were close to the third quartile (3rd quartile CP=756.7 ms, 3rd quartile CD=620 ms) and the last (HImax) had values that were close to the maximum (maximum CP=1241 ms, maximum CD=1310 ms) found in *O. indicus* song. The syllable period and syllable duration had the mean values of an *O. henryi* call at 25°C. The last stimulus (IH) of this set had the micro-temporal features of an *O. indicus* call, and the macro-temporal features of an *O. henryi* call (Table S1).

Response function experiments

The next three experiments were conducted to ascertain the female response functions for CP, CD and syllable period (SP), respectively.

The first experiment contained a set of six stimuli where, while every other feature was held constant at the mean value of the *O. henryi* call (CD: 236.9 ms; SP: 17.3 ms), only the CP was varied. CP was varied both above and below the mean CP of an *O. henryi* call such that the minimum value was lower than the minimum found in the conspecific calling song at 25°C (minimum CP=500.4 ms), while the maximum value was close to the maximum found in the heterospecific calling song at 25°C (maximum CP=1214 ms). The CPs tested were: 300, 450, 600 (mean), 750, 900 and 1100 ms (Fig. 3).

The second experiment also contained a set of six stimuli, varying only in CD, while the others were held constant at the mean value of the *O. henryi* call (CP: 633.7 ms; SP: 17.3 ms). Different CDs were obtained by varying the number of syllables per chirp; from two syllables per chirp (CD: 29 ms) to 33 syllables per chirp (CD: 566 ms) (almost a trill), with steps at seven syllables (CD: 115.7 ms), 14 syllables (CD: 236.9 ms) (mean), 21 syllables (CD: 358.2 ms) and 28 syllables (CD: 479.5 ms). While the stimulus with minimum chirp duration was a bisyllabic chirp, the stimulus with maximum duration was close to the median of the chirp duration distribution found in the natural calling song of *O. indicus*, the heterospecific (480 ms).

A subset of this set included four stimuli to investigate response for chirp duration at finer resolution between seven and 14 syllables per chirp, and 14 and 21 syllables per chirp. The stimuli in this

subset were chosen to include more points from within the natural calling song distribution of *O. henryi*, the conspecific. The stimuli in this subset included 10 (CD: 169 ms), 12 (203 ms), 16 (273 ms) and 18 syllables per chirp (307 ms). The group of animals for this subset was independent from the group used for the second experiment.

The third experiment included five stimuli. In this set only the syllable period was varied, with the chirp period held constant at the mean value of *O. henryi* call (CP: 633.7 ms). The chirp duration varied slightly (233–242.9 ms) around the mean chirp duration (236.9 ms) as the syllable period was varied and the number of syllables per chirp was held constant at 14. Syllable periods tested were: 14, 17 (mean of *O. henryi* song), 20, 23 and 25 ms. The minimum value of the syllable period used was 14 ms as the syllable duration at 25°C of *O. henryi* was 13 ms. The maximum value exceeded the maximum found in the natural calling song of *O. indicus* (19.22 ms).

In each of the above experiments the stimulus with the mean values of chirp period, chirp duration and syllable period for the respective sets served as the positive control for that set. Every individual tested was found to respond to the positive control, suggesting that females were motivated to respond to male calls.

Interactions

In the previous sets one temporal feature was varied per set, keeping the others at their mean value. However, if the response depends not only on the additive effect of each individual feature but also on how one feature may modify the effect of another feature, then the previous sets would be unable to capture such an effect. In this set, therefore, two temporal features were co-varied and the response examined. In this experiment, two out of the three temporal features (chirp period, chirp duration and syllable period) were co-varied between the extremes of their already tested values (i.e. minimum and maximum values), while the third one was held constant at the mean value. Thus if chirp period was varied to its maximum at 1100 ms and chirp duration to its minimum at two syllables per chirp, then syllable period would be at its mean value of 17 ms. Eleven such stimuli were created (Fig. 4A). The twelfth stimulus in this set was the positive control, where all three temporal features had the mean values of their respective distributions at 25°C.

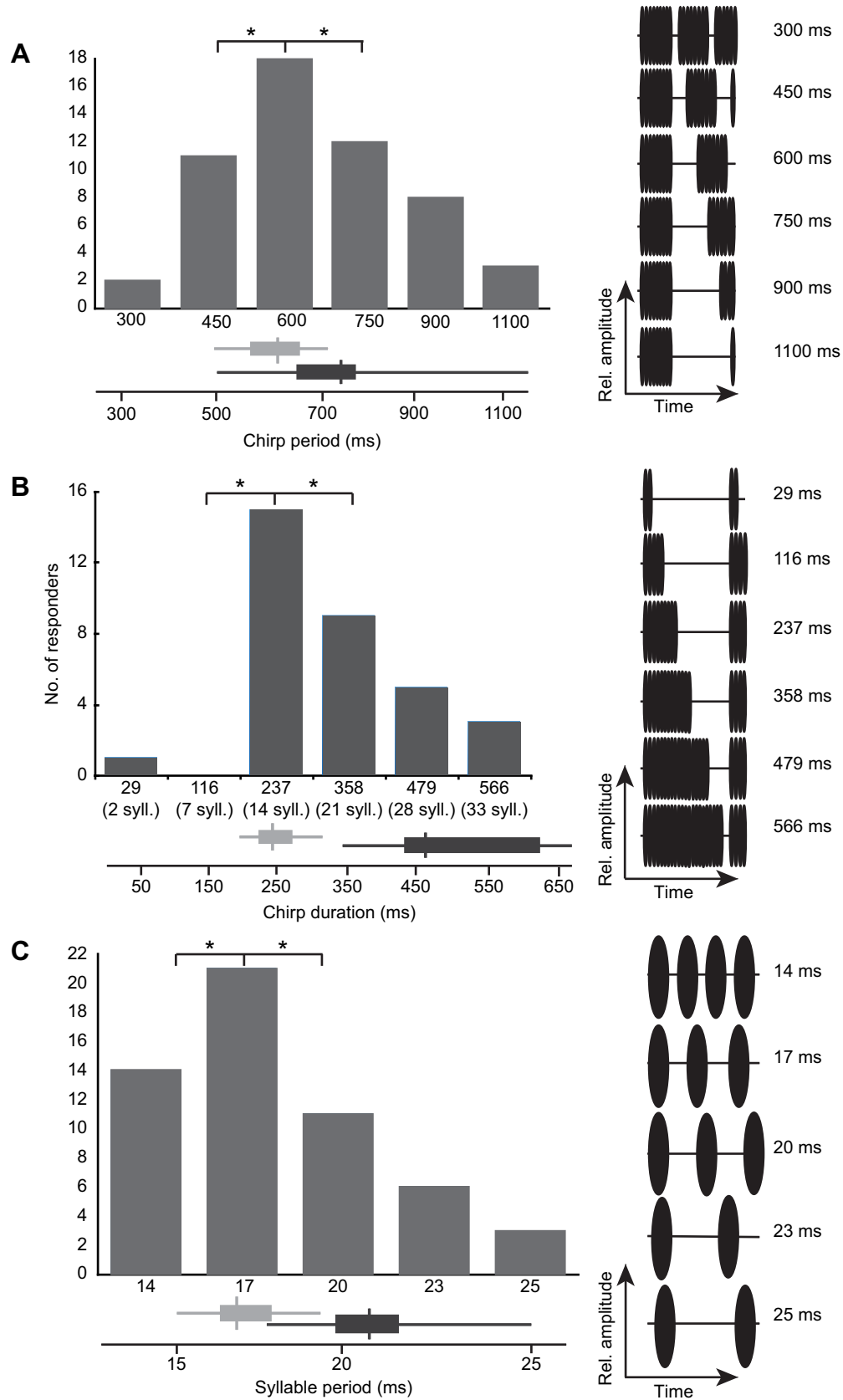


Fig. 3. Response functions of female *O. henryi* for chirp period, chirp duration and syllable period. The natural ranges of (A) chirp period, (B) chirp duration and (C) syllable period found in the calls of *O. henryi* (grey) and *O. indicus* (black) are indicated below the x-axis. The natural ranges of the calls are plotted as box and whisker plots with the box covering the first to third quartile and the horizontal lines indicating the range. The vertical line indicates the median. Panels on the right depict oscillograms of the stimuli used.

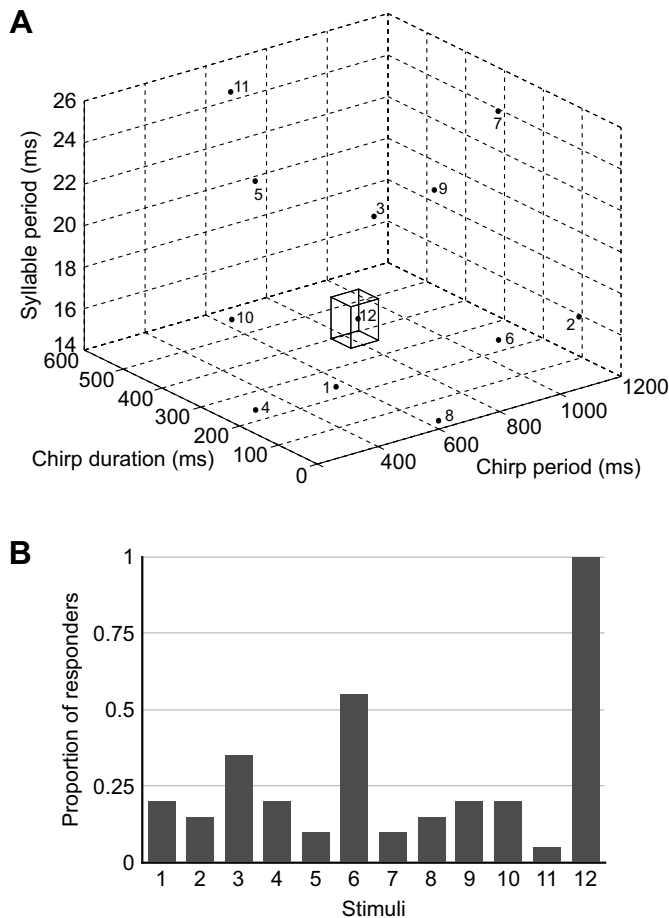


Fig. 4. Responses of female *O. henryi* to song stimuli with co-varied features. (A) Graph depicting the stimuli used where two temporal features were varied together. The box indicates the first and third quartile values of chirp period, chirp duration and syllable period found in the calling songs of *O. henryi* in the wild. (B) Response of *O. henryi* females to the respective stimuli indicated in A.

Statistical analysis

All the statistical analyses were carried out using R (version 3.0.3; R Core Team, 2014). In the phonotaxis experiments a female was scored as a positive responder if she went to the playback speaker within 180 s of release. Within a set, each female was tested once on each of the stimuli. The final score for each stimulus was the number of positive responders for that particular stimulus.

For the macro- versus micro-temporal feature experiment, a McNemar chi-squared test was conducted to test whether the relative frequencies of positive and negative responses varied across the different stimuli. For the sets exploring the individual response functions, McNemar chi-squared tests were conducted to compare the relative frequencies of positive and negative responses between the stimulus with the highest response and that with the second highest response. McNemar chi-squared tests were employed because a repeated measures design was used in each set (Sokal and Rohlf, 2012).

The behavioural responses from the experiments for the sets described above were analysed together in a mixed-model framework, to describe the response space for *O. henryi* females. Response probability as either a positive response or a negative response was considered as a binary response variable. Thus we

used a binomial error family (Crawley, 2007; Zuur et al., 2009) to model the probability of a positive response. The chirp period (CP), chirp duration (CD) and syllable period (SP) were considered as continuous explanatory variables in our model along with the quadratic effects of the same, and also interactions between these terms such that:

$$y = \alpha + \beta_1 SP + \beta_2 CP + \beta_3 CD + \beta_4 (sp^2) + \beta_5 (CP^2) + \beta_6 (CD^2) + \beta_7 (CP \times CD) + \beta_8 (SP \times CP) + \beta_9 (SP \times CD) + \beta_{10} (SP^2 \times CP^2) + \beta_{11} (SP^2 \times CD^2). \quad (1)$$

$$\text{Response} = e^y / (1 + e^y). \quad (2)$$

In Eqn 1 the intercept is represented as α . The coefficients of the various explanatory variables are represented as β_1 to β_{11} . For the individual response functions of chirp period, chirp duration and syllable period, convex functions were assumed. Among the interactions, linear-linear and quadratic-quadratic interaction terms were chosen as these interactions would allow for a convex surface in accordance with the convex response functions observed for the individual features. The GLMMADMB package (Fournier et al., 2012; <http://glmmdmb.r-forge.r-project.org/>) was used for this statistical modelling of the response space of *O. henryi*. To estimate the effect that each feature has on describing the response space, we systematically reduced and increased the value of each feature, one by one, by 25% and compared the difference in the probability of response with the response when all the feature values were at their conspecific median values.

For various values of chirp period (300–1100 ms), chirp duration (29–566 ms) and syllable period (14–25 ms), response probabilities were obtained from the model coefficients estimated through the GLMM. The result was a response space of *O. henryi* based on a combination of responses to chirp period, chirp duration and syllable period. On the generated response space of *O. henryi* individual calls of *O. henryi* and *O. indicus* were superimposed to examine the response probabilities predicted for each of these conspecific and heterospecific signals. The individual predicted response probabilities at each of the *O. henryi* and *O. indicus* signal values were also plotted to elucidate the difference in predicted response of *O. henryi* to the conspecific versus the heterospecific signals.

The signals of *Oecanthus henryi* that were superimposed on the generated response space were further evaluated. The coefficients of variation of the three features were determined and ranked to examine the relative variability in these features. A linear discriminant analysis was also performed on the signals of both the conspecific and heterospecific to elucidate which of the features (or combination of features) best distinguished the *O. henryi* signals from the *O. indicus* signals.

RESULTS

Macro- versus micro-temporal features

Fifteen animals were tested. All the animals showed positive response to the conspecific *O. henryi* song (Hen), while only one out of the fifteen responded to the heterospecific *O. indicus* song (Ind) (Fig. 2). The number of positive responses was low and progressively decreased for HImed, HIq3 and HImax, respectively, in which the stimuli consisted of the macro-temporal pattern of *O. indicus*, and the micro-temporal pattern of *O. henryi*. Response to the stimulus (IH) where the macro-temporal pattern was that of

O. henryi and the micro-temporal pattern of *O. indicus* was as low as that for the heterospecific song.

There was a statistically significant difference in the relative frequencies of positive and negative responses between the *O. henryi* song and the treatment with the next highest number of responders (HImed) (Hen versus HImed, McNemar chi squared=7.1, $P=0.007$) indicating that macro-temporal features do play a significant role in determining female response. There was no significant difference between the negligible response to the *O. indicus* song and the song pattern with macro-temporal features of *O. henryi* and micro-temporal features of *O. indicus* (Ind versus IH, McNemar chi squared=0, $P>0.9999$). Thus changing only the micro-temporal features, syllable period and duration, to the values of that of the heterospecific song was sufficient to eliminate phonotactic response. There was no significant difference between the *O. indicus* song and HImed (Ind versus HImed, McNemar chi squared=3.2, $P=0.07$).

Variations among signal features

The variability in signal features of the conspecific *Oecanthus henryi* was analysed. Syllable period had the least coefficient of variation, followed by chirp duration and chirp period (Table 1). Between the signals of the conspecific (*O. henryi*) and heterospecific (*O. indicus*) a linear discriminant function analysis was also performed to assess which, out of the three features, contributed most to the discrimination between the signals. Syllable period had the highest loading, followed by chirp duration and chirp period (Table 1). These three features were sufficient to give rise to separate groups distinguishing *O. henryi* and *O. indicus* (Fig. 5).

Response function for chirp period

Eighteen animals were tested. A closed response function was obtained with maximum response for the chirp period of 600 ms, which was closest to the mean chirp period of *O. henryi* (Fig. 3A), with all animals responding positively. The response to 600 ms differed significantly from the response to 450 and 750 ms, the stimuli which showed the next highest responses (600 versus 450 ms, McNemar chi squared=5.14, $P=0.02$; 600 versus 750 ms, McNemar chi squared=4.17, $P=0.04$). Minimum response was obtained for the stimulus with chirp period of 300 and 1100 ms. The response was thus highest for the mean and significantly decreased for values both higher and lower than the mean.

Response function for chirp duration

Fifteen animals were tested. Maximum response was obtained for the stimulus with mean *O. henryi* chirp duration of 14 syllables per chirp (~237 ms), where all the fifteen animals responded positively (Fig. 3B). Chirp durations lower than the mean hardly elicited any response, while the response to values higher than the mean were significantly lower [14 syllables per chirp (237 ms) versus 21 syllables per chirp (358 ms), McNemar chi squared=4.16, $P=0.04$].

Table 1. The mean, standard deviation and coefficient of variation of the features of the signals of the conspecific *Oecanthus henryi*

Features of the signal	Mean (ms)	s.d. (ms)	Coefficient of variation	Coefficient of linear discriminants
Syllable period	17.37	2.24	0.129	0.2724
Chirp duration	257.19	42.35	0.165	0.0048
Chirp period	699.62	160.66	0.230	-0.0002

Linear discriminant analysis was performed with the signals of *O. henryi* and *O. indicus*; the last column shows the loadings of the three features in discriminating the signals of *O. henryi* from *O. indicus*.

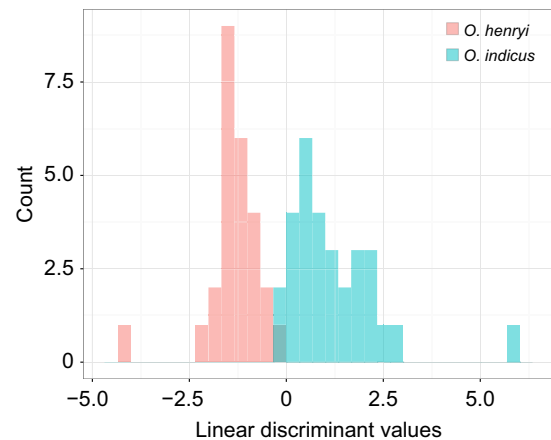


Fig. 5. Histogram of the results of linear discriminant function analysis of the calling songs of *Oecanthus henryi* (in pink) and *O. indicus* (in green).

Responses similar to the mean chirp duration were also found for chirp durations with 10, 12, 16 and 18 syllables per chirp (tested in a different set) (Fig. S1). Response decreased progressively as chirp durations increased from more than 18 syllables per chirp. Thus for chirp duration also, a closed response function was obtained with maximum response at and around the mean chirp duration.

Response function for syllable period

Twenty-one animals were tested. All the animals responded to the mean syllable period of *O. henryi*, 17 ms (Fig. 3C). Response decreased significantly at the lower value of syllable period, 14 ms (17 versus 14 ms, McNemar chi squared=5.1, $P=0.02$; 17 versus 20 ms, McNemar chi squared=8.1, $P=0.004$). As the mean syllable duration used was 13 ms, syllable periods less than 14 ms could not be tested. Female response decreased for syllable periods with values greater than the mean, showing a closed response function.

Interactions

Twenty animals were tested. A stimulus with the characteristics of the mean call of *O. henryi* was used as a positive control, and all the animals responded positively to it (twelfth stimulus in Fig. 4B). When the syllable period (SP) was kept constant at its mean value and chirp period (CP) and chirp duration (CD) were at their maximum values (third stimulus), seven females out of 20 responded positively. Holding CD at mean value, 11 females out of 20 responded positively when SP was at its minimum and CP at maximum (sixth stimulus). When CP was kept at its mean value, the number of positive responses elicited was always less than five, as was for the rest of the stimuli (Fig. 4B).

GLMM model

The standard deviation for the random effects (effect of individual animals) in the mixed effects model was 0.88. All the fixed effects terms, including the interaction terms, were statistically significant in explaining the response (Table 2). When chirp period was reduced and increased by 25% of its median value, the changes in the predicted response probability were 0.121 and 0.001, respectively. The corresponding values for chirp duration were 0.056 and 0.010, while for syllable period they were 0.034 and 0.289. The effect size for syllable period was the most, indicating that syllable period had more influence than the other features in describing the response space.

Table 2. The coefficient values, standard errors (s.e.m.), Z-values and P-values of the various fixed effects terms used to construct the statistical model using GLMM of response space of *O. henryi* females

Fixed effects	Estimate	s.e.m.	Z-value	P-value
Intercept	-4.58×10^1	1.03×10^1	-4.43	9.3×10^{-6}
SP	3.39	8.60×10^{-1}	3.94	8.2×10^{-5}
CP	5.21×10^{-2}	1.38×10^{-2}	3.79	0.00015
CD	6.35×10^{-2}	1.50×10^{-2}	4.22	2.4×10^{-5}
SP ²	-6.43×10^{-2}	1.67×10^{-2}	-3.84	0.00012
CP ²	-2.43×10^{-5}	4.98×10^{-6}	-4.89	1.0×10^{-6}
CD ²	-7.45×10^{-5}	1.27×10^{-5}	-5.87	4.4×10^{-9}
CP×CD	1.55×10^{-5}	5.04×10^{-6}	3.07	0.00211
SP×CP	-2.05×10^{-3}	7.55×10^{-4}	-2.72	0.00657
SP×CD	-2.89×10^{-3}	8.27×10^{-4}	-3.50	0.00047
SP ² ×CP ²	3.35×10^{-8}	1.32×10^{-8}	2.54	0.01104
SP ² ×CD ²	1.11×10^{-7}	3.37×10^{-8}	3.30	0.00097
Random effects	Variance	s.d.		
Animal identity	0.7689	0.8769		

The variance and standard deviation (s.d.) of the random effects term have also been included.

The predicted response space of *O. henryi* for a combination of chirp period, chirp duration and syllable period is shown in Fig. 6. The response probabilities vary from 0.1 to 0.9 (shown by varying colours). Individual calls of *O. henryi* and *O. indicus* are also plotted on the response space, indicating the predicted response for the calls. Most of the *O. henryi* calls lie within the 0.8–0.7 predicted response probability, whereas the *O. indicus* calls lie mostly at the periphery (0.5–0.1 predicted response probability) (Fig. 6).

From this response space, individual response probabilities for each of the calling songs of both the species were also estimated. The calling songs were plotted as a function of their similarity (measured in terms of distance) from both the mean song of *O. henryi* and *O. indicus*. On these was superimposed the predicted probability value for each of these calls (varying colours) (Fig. 7). The predicted response probabilities to the various *O. henryi* songs varied from 0.69 to 0.86, with a mean of 0.8; the response probabilities to the various *O. indicus* songs varied from 0.001 to 0.6, with a mean of 0.32. The estimated response probability to the mean song of *O. henryi* (CP=629 ms, CD=241 ms, SP=17 ms) was 0.83 and that to the mean song of *O. indicus* (CP=720 ms, CD=480 ms, SP=21 ms) was 0.3. In general the estimated response probability of a song was higher if it was closer to the mean song of *O. henryi* and lower if songs were closer to the mean song of

O. indicus. Songs of *O. indicus* that were further from both the mean songs had the lowest response probabilities (Fig. 7).

DISCUSSION

Call variability and response space

Stabilizing preference on features of a signal have traditionally been associated with aiding in mate recognition (Paterson, 1985). These features are usually also associated with low variability (Gerhardt, 1991). Of the temporal features, syllable period has often been found to be under stabilizing selection (Popov and Shuvalov, 1977; Stout and McGhee, 1988; Gerhardt, 1991; Wollerman, 1998; Shaw and Herlihy, 2000; Gerhardt and Huber, 2002; but see Hedrick and Weber, 1998). Chirp period and duration, however, have been found to be under directional selection (Hedrick, 1986; Gerhardt, 1991; Ryan and Keddy-Hector, 1992; Wagner et al., 1995; Gerhardt et al., 2000; Murphy and Gerhardt, 2000; Nandi and Balakrishnan, 2013; but see Hedrick and Weber, 1998). These features are also associated with having higher variability (Gerhardt, 1991). In studies of multivariate preference functions of females, Blankers et al. (2015) and Hennig et al. (2016) found stabilizing preference for the micro-temporal feature pulse rate and directional preference for the macro-temporal feature trill/chirp duration. We found closed response functions for both micro- and macro-temporal features.

However, recent studies of multivariate selection using the fitness landscape concept of genotypic space (Wright, 1931) have shown that features previously thought to be under directional selection can also contribute to stabilizing selection. Temporal features of the calls of the cricket *Teleogryllus commodus* such as trill number (number of trills), chirp pulse number and inter-call duration were found to be under multivariate stabilizing selection both in laboratory (Brooks et al., 2005) and field experiments (Bentsen et al., 2006). The coefficient of variation of these temporal features was around 12% for chirp pulse number (Bentsen et al., 2006; Brooks et al., 2005), around 40% for trill number (Bentsen et al., 2006; Brooks et al., 2005) and for inter-call duration varied between 12% (Brooks et al., 2005) and 86% (Bentsen et al., 2006). A similar study on the frog *Hyla versicolor* found directional selection on call duration and call rate, but found stabilizing selection on the combination of pulse rate, call duration and call rate (Gerhardt and Brooks, 2009). The coefficient of variation on pulse rate was lowest at 8%, while call duration was 24% and call rate was 17%. The coefficient of variation we obtained for chirp duration and chirp period was comparable to the coefficient of variation in similar features of previous studies (Table 1). We also obtained closed

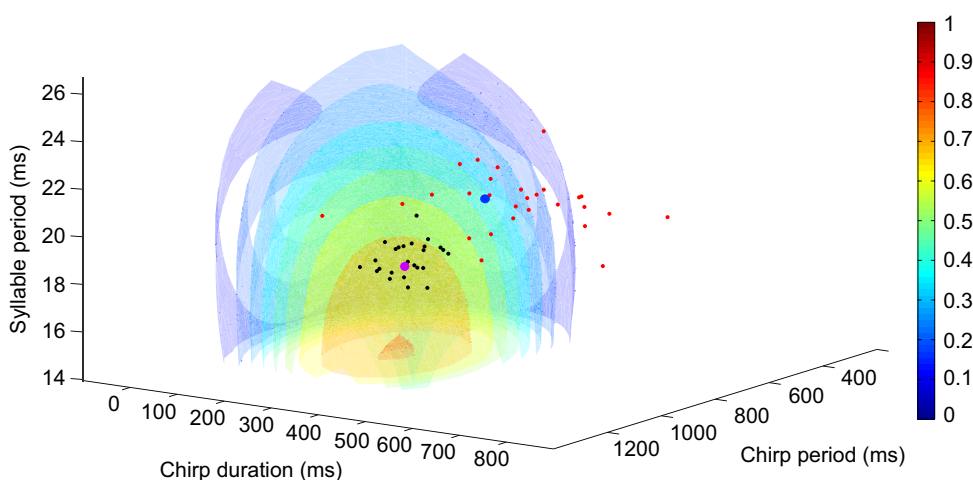


Fig. 6. The predicted response space of *O. henryi* in relation to the signal spaces of *O. henryi* and *O. indicus*. The predicted response space has been visualized as iso-surfaces at different response probabilities starting from 0.1 to 0.9. The colours in the key indicate different response probabilities. The red dots are the positions of the natural calls of *O. indicus*; the black dots are the values of natural *O. henryi* calls. The values of natural calls of both species have been taken from previous data (Metrani and Balakrishnan, 2005).

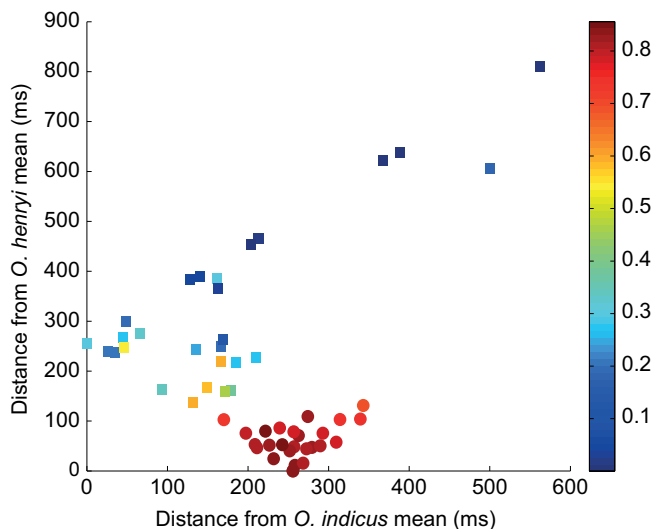


Fig. 7. The predicted response probabilities to individual calling songs of *O. henryi* (circles) and *O. indicus* (squares). The songs have been plotted as a function of distance from *O. henryi* mean song (on y-axis) and *O. indicus* mean song (on x-axis). The colours corresponding to the respective response probabilities are indicated in the key.

response functions for chirp duration and chirp period, and find all the three temporal features contributing significantly to the multivariate response space for *O. henryi*. Call features with relatively high variability may also contribute to stabilizing selection when analysed in a multivariate framework. The dichotomy of invariant features for mate recognition and variable features for sexual selection may not be necessarily true, though more studies of such kind are needed to explore this further. In our study, the closed response functions on chirp period and duration may indicate selection pressure on these features not to approach values typical of the same features of the sympatric heterospecific songs, thus achieving pre-copulatory reproductive isolation.

Macro-versus micro-temporal features

The first phonotactic experiment showed that both the macro- and micro-temporal patterns are important for conspecific song recognition. However, the difference in *O. henryi* female response to conspecific and heterospecific song was more pronounced when the signals differed in their micro-temporal pattern, thus we infer that the micro-temporal pattern plays a more important role in signal recognition than the macro-temporal patterns. The importance of micro-temporal features was also confirmed in the mixed model analysis, as the syllable period had the highest influence of all the temporal features. Syllable period or pulse rate has traditionally been regarded as the most important feature in song recognition (Popov and Shuvalov, 1977; Walker, 1957; Weber et al., 1981), to the extent that it was once regarded as the sole temporal feature necessary for song recognition (Schildberger, 1984; Thorson et al., 1982). However, studies have subsequently shown other features to be necessary as well (Doherty, 1985; Huber et al., 1989). In this study we found that acoustic species recognition in *O. henryi* is dictated by all the three temporal features individually and also by their combined effect, with syllable period being the most important temporal feature.

Our findings characterizing the features according to intra-species variance and how much they contributed in distinguishing the conspecific from the heterospecific did not help us to distinguish between the invariant feature hypothesis and sound environment hypothesis. Our results actually provided evidence for both the

hypotheses. Syllable period was both the least variable and the one that had the highest loading in the linear discriminant analysis (Table 1). Interestingly, syllable period also had the highest influence in describing the response space.

Statistical modelling: advantages and constraints

We used statistical modelling to generate a response space for *O. henryi*. Response functions based on phonotactic experiments for the three temporal features as well as their interactions were integrated using a generalized linear mixed models approach. While relatively rare, other studies have similarly used a statistical approach to describe response spaces. Amezcua et al. (2011) used a generalized additive model framework with one spectral and one temporal feature, and the response space they described for each anuran species was restricted to a probability threshold of 0.9. Ryan et al. (2003) considered four temporal and three spectral features, and reduced it to two dimensions by multi-dimensional scaling. They then used quadratic equations to arrive at a generalization gradient for response. To show how song recognition takes place in three species of field crickets, Blankers et al. (2015) represented the results of individual preference functions of pulse rate and trill duration in a bivariate response space. They used linear modelling for constructing the bivariate response space. In studies of multivariate selection on the songs of the field cricket *Teleogryllus commodus* (Bentsen et al., 2006; Brooks et al., 2005) and of the anuran species *Hyla versicolor* (Gerhardt and Brooks, 2009) artificial songs were created where various song features were varied randomly from a normal distribution of the same features. The response to these songs was then used to describe matrices of directional, quadratic and correlational selection using a multiple regression framework. Further, canonical analysis was applied and the matrices were rotated so that along each major axis (number of major axes determined by the number of features varied) the value for directional selection as well as eigenvectors for non-linear selection was obtained. In a recent paper Hennig et al. (2016) explored the multivariate response of three allopatric field cricket species. Similar to our approach, from experiments elucidating the individual preference functions for carrier frequency, micro- and macro-temporal features, a multivariate response space for all the three species was created. Second-order polynomial regression was used. From the model, the differential weighting of each feature and interactions, with similarities and differences between the three species, was expounded (Hennig et al., 2016).

We attempted to expand the statistical approach taken by previous studies in several ways. We did not restrict the response probability to any particular threshold. We used GLMM, which allows for greater flexibility while working with non-normal binomially distributed data. The GLMM approach also allowed the construction of a predictive model to estimate the response of *O. henryi* females to different combinations of values of chirp period, syllable period and chirp duration, as well as to heterospecific calls. It also allowed us to factor in interactions between the features.

In general, the model predicted high response towards conspecific calls and much lower response to calls in the heterospecific response space. The stochastic nature of our model, however, gave rise to a few constraints. The response probability for the mean conspecific calling song as predicted by our model was found to be less than the value observed in our experiments (0.83 versus 1; Fig. 1). Similarly, the response probability for the mean heterospecific song predicted by our model was higher than that obtained in phonotaxis experiments (0.3 versus 0; Fig. 1). These caveats could be due to the nature of the quadratic equation utilized in the mixed model. As a quadratic equation is symmetrical, it approximates the humped shape

accurately but is limited in accommodating the extreme values. Future studies could further evaluate the details of the shape of the response functions to better capture female response to call features.

Implications of the study for reproductive isolation

The statistical model of response space constructed for *O. henryi* indicates maintenance of reproductive isolation between *O. henryi* and *O. indicus* through the temporal features of their calling songs. The predicted probability of response of the conspecific (*O. henryi*) calls was consistently higher than those of the heterospecific (*O. indicus*) calls. Thus the predicted response is not entirely limited to the conspecific signal space but also extends to the heterospecific signal space but with lower probabilities. This corresponds to the third scenario described in Ryan and Rand (2001) where the response space is neither completely limited to the conspecific, nor does it extend equally over both conspecific and heterospecific signals. Various other studies have also shown response of females to heterospecific songs (Backwell and Jennions, 1993; Doherty and Howard, 1996; Oldham and Gerhardt, 1975).

However, as indicated above, the predicted response probability to the mean song of *O. indicus* is high when compared with the behaviour. The model is, however, useful because it indicates which combinations of the temporal features found in the heterospecific songs elicit relatively high response probabilities and hence need to be tested. Testing females on combinations of features, which were not included for the model generation, would also serve to externally validate this model and this is planned to be done in future experiments. This model, moreover, can be used more generally and is not restricted to the reported pair of sympatric species. The response of *O. henryi* to various combinations of chirp period, chirp duration and syllable period can be evaluated, in effect testing the response to other heterospecific signals. This approach could also be used to test and construct similar multivariate response spaces of other cricket species. It would be very interesting indeed to construct the same for the females of the sympatric heterospecific *O. indicus*, and compare the response spaces between the two sympatrics. In *O. indicus* where the signal variability is more than that in *O. henryi*, one could expect the space for the high response probabilities to be broader.

The predicted response space, by delimiting the combinations giving rise to high response probabilities, has implications for the conspecific signal. It places constraints on the variation of the signal allowed within the species. The response to signal spaces of conspecifics from different populations can be evaluated using this model. It can then indicate how the signal has changed, if it has, between different populations and the reasons behind the change can be further explored.

Acknowledgements

We thank Manjunatha Reddy for helping with collection and maintenance of animals. M.B. is also thankful to Sandeep Pulla for help with R, Dipanjan Bhattacharya for help with MATLAB, and Diptarup Nandi and Rittik Deb for insightful discussions.

Competing interests

The authors declare no competing or financial interests.

Author contributions

M.B. carried out all experiments and analyses and wrote the manuscript; K.I. supervised the statistical analyses and modelling; R.B. was involved in study design and analysis.

Funding

This work was funded by the Ministry of Environment and Forests, Government of India and Department of Biotechnology (DBT-IISc Partnership Program),

Government of India. M.B. was also supported by the Council of Scientific and Industrial Research, Government of India.

Supplementary information

Supplementary information available online at <http://jeb.biologists.org/lookup/doi/10.1242/jeb.146852.supplemental>

References

- Alexander, R. D. (1967). Acoustical communication in arthropods. *Annu. Rev. Entomol.* **12**, 495–526.
- Amezquita, A., Flechas, S. V., Lima, A. P., Gasser, H. and Hodl, W. (2011). Acoustic interference and recognition space within a complex assemblage of dendrobatid frogs. *Proc. Natl. Acad. Sci. USA* **108**, 17058–17063.
- Backwell, P. R. Y. and Jennions, M. D. (1993). Mate choice in the Neotropical frog, *Hyla ebraccata*: sexual selection, mate recognition and signal selection. *Anim. Behav.* **45**, 1248–1250.
- Bentsen, C. L., Hunt, J., Jennions, M. D. and Brooks, R. (2006). Complex multivariate sexual selection on male acoustic signaling in a wild population of *Teleogryllus commodus*. *Am. Nat.* **167**, E102–E116.
- Blankers, T., Hennig, R. M. and Gray, D. A. (2015). Conservation of multivariate female preference functions and preference mechanisms in three species of trilling field crickets. *J. Evol. Biol.* **28**, 630–641.
- Bremond, J.-C. (1976). Specific recognition in the song of Bonelli's warbler (*Phylloscopus bonelli*). *Behaviour* **58**, 99–116.
- Brémond, J.-C. (1978). Acoustic competition between the song of the wren (*Troglodytes troglodytes*) and the songs of other species. *Behaviour* **65**, 89–97.
- Brooks, R., Hunt, J., Blows, M. W., Smith, M. J., Bussi re, L. F. and Jennions, M. D. (2005). Experimental evidence for multivariate stabilizing sexual selection. *Evolution* **59**, 871–880.
- Brumm, H. and Slabbekoorn, H. (2005). Acoustic communication in noise. In *Advances in the Study of Behavior* (ed. P. J. Slater, C. Snowdon, T. Roper, H. J. Brockmann and M. Naguib), pp. 151–209. Amsterdam: Elsevier.
- Chopard, L. (1969). *The Fauna of India and Adjacent Countries*. Calcutta: Baptist Mission Press.
- Clemens, J. and Hennig, R. M. (2013). Computational principles underlying the recognition of acoustic signals in insects. *J. Comput. Neurosci.* **35**, 75–85.
- Crawley, M. J. (2007). *The R Book*. Chichester, NJ: Wiley.
- Dabelsteen, T. and Pedersen, S. B. (1985). Correspondence between messages in the full song of the blackbird *Turdus merula* and meanings to territorial males, as inferred from responses to computerized modifications of natural song. *Z. F r Tierpsychol.* **69**, 149–165.
- Deb, R. and Balakrishnan, R. (2014). The opportunity for sampling: the ecological context of female mate choice. *Behav. Ecol.* **25**, 967–974.
- Deb, R., Bhattacharya, M. and Balakrishnan, R. (2012). Females of a tree cricket prefer larger males but not the lower frequency male calls that indicate large body size. *Anim. Behav.* **84**, 137–149.
- Diwakar, S. and Balakrishnan, R. (2007). Vertical stratification in an acoustically communicating ensiferan assemblage of a tropical evergreen forest in southern India. *J. Trop. Ecol.* **23**, 479–486.
- Doherty, J. A. (1985). Trade-off phenomena in calling song recognition and phonotaxis in the cricket, *Gryllus bimaculatus* (Orthoptera, Gryllidae). *J. Comp. Physiol. A* **156**, 787–801.
- Doherty, J. A. and Howard, D. J. (1996). Lack of preference for conspecific calling songs in female crickets. *Anim. Behav.* **51**, 981–990.
- Emlen, S. T. (1972). An experimental analysis of the parameters of bird song eliciting species recognition. *Behaviour* **41**, 130–171.
- Falls, J. B. (1963). *Properties of Bird Song Eliciting Responses from Territorial Males*, pp. 259–273. Acton, ACT: Australian Academy of Science.
- Fournier, D. A., Skaug, H. J., Ancheta, J., Ianelli, J., Magnusson, A., Maunder, M. N., Nielsen, A. and Sibert, J. (2012). AD Model Builder: using automatic differentiation for statistical inference of highly parameterized complex nonlinear models. *Optim. Methods Softw.* **27**, 233–249.
- Futuyma, D. J. (1998). *Evolutionary Biology*. Sunderland, MA: Sinauer Associates.
- Gerhardt, H. C. (1991). Female mate choice in treefrogs: static and dynamic acoustic criteria. *Anim. Behav.* **42**, 615–635.
- Gerhardt, H. C. and Brooks, R. (2009). Experimental analysis of multivariate female choice in gray treefrogs (*Hyla versicolor*): evidence for directional and stabilizing selection. *Evolution* **63**, 2504–2512.
- Gerhardt, H. C. and Doherty, J. A. (1988). Acoustic communication in the gray treefrog, *Hyla versicolor*: evolutionary and neurobiological implications. *J. Comp. Physiol. A* **162**, 261–278.
- Gerhardt, H. C. and Huber, F. (2002). *Acoustic Communication in Insects and Anurans: Common Problems and Diverse Solutions*. Chicago: University of Chicago Press.
- Gerhardt, H. C., Tanner, S. D., Corrigan, C. M. and Walton, H. C. (2000). Female preference functions based on call duration in the gray tree frog (*Hyla versicolor*). *Behav. Ecol.* **11**, 663–669.
- Gottsberger, B. and Gruber, E. (2004). Temporal partitioning of reproductive activity in a neotropical anuran community. *J. Trop. Ecol.* **20**, 271–280.

- Greenfield, M. D.** (1988). Interspecific acoustic interactions among katydids *Neoconocephalus*: inhibition-induced shifts in diel periodicity. *Anim. Behav.* **36**, 684-695.
- Grobe, B., Rothbart, M. M., Hanschke, A. and Hennig, R. M.** (2012). Auditory processing at two time scales by the cricket *Gryllus bimaculatus*. *J. Exp. Biol.* **215**, 1681-1690.
- Hedrick, A. V.** (1986). Female preferences for male calling bout duration in a field cricket. *Behav. Ecol. Sociobiol.* **19**, 73-77.
- Hedrick, A. and Weber, T.** (1998). Variance in female responses to the fine structure of male song in the field cricket, *Gryllus integer*. *Behav. Ecol.* **9**, 582-591.
- Hennig, R. M. and Weber, T.** (1997). Filtering of temporal parameters of the calling song by cricket females of two closely related species: a behavioral analysis. *J. Comp. Physiol. A Sens. Neural Behav. Physiol.* **180**, 621-630.
- Hennig, R. M., Heller, K.-G. and Clemens, J.** (2014). Time and timing in the acoustic recognition system of crickets. *Front. Physiol.* **5**, 1-11.
- Hennig, R. M., Blankers, T. and Gray, D. A.** (2016). Divergence in male cricket song and female preference functions in three allopatric sister species. *J. Comp. Physiol. A* **202**, 347-360.
- Hödl, W.** (1977). Call differences and calling site segregation in anuran species from Central Amazonian floating meadows. *Oecologia* **28**, 351-363.
- Huber, F., Moore, T. E. and Loher, W.** (ed.) (1989). *Cricket Behavior and Neurobiology*. Ithaca, NY: Cornell University Press.
- Marler, P.** (1960). Bird song and mate selection. In *Animal Sounds and Communication* (ed. W. E. Lanyon and W. N. Tavolga), pp. 348-367. Washington, DC: American Institute of Biological Sciences.
- Mayr, E.** (1963). *Animal Species and Evolution*. Cambridge; London: Belknap Press of Harvard University Press.
- Meckenhäuser, G., Hennig, R. M. and Nawrot, M. P.** (2013). Critical song features for auditory pattern recognition in crickets. *PLoS ONE* **8**, e55349.
- Metrani, S. and Balakrishnan, R.** (2005). The utility of song and morphological characters in delineating species boundaries among sympatric tree crickets of the genus *Oecanthus* (Orthoptera: Gryllidae: Oecanthinae): a numerical taxonomic approach. *J. Orthoptera Res.* **14**, 1-16.
- Mhatre, N., Bhattacharya, M., Robert, D. and Balakrishnan, R.** (2011). Matching sender and receiver: poikilothermy and frequency tuning in a tree cricket. *J. Exp. Biol.* **214**, 2569-2578.
- Murphy, C. G. and Gerhardt, H. C.** (2000). Mating preference functions of individual female barking treefrogs, *Hyla gratiosa*, for two properties of male advertisement calls. *Evolution* **54**, 660-669.
- Nandi, D. and Balakrishnan, R.** (2013). Call intensity is a repeatable and dominant acoustic feature determining male call attractiveness in a field cricket. *Anim. Behav.* **86**, 1003-1012.
- Nelson, D. A. and Marler, P.** (1990). The perception of birdsong and an ecological concept of signal space. In *Comparative Perception* (ed. W. C. Stebbins and M. A. Berkley), pp. 443-478. Oxford, England: John Wiley and Sons.
- Oldham, R. S. and Gerhardt, H. C.** (1975). Behavioral isolating mechanisms of the treefrogs *Hyla cinerea* and *H. gratiosa*. *Copeia* **1975**, 223-231.
- Paterson, H. E. H.** (1985). The recognition concept of species. In *Species and Speciation* (ed. E. Vrba), pp. 21-29. Pretoria, South Africa: Transvaal Museum.
- Pollack, G. S.** (2001). Analysis of temporal patterns of communication signals. *Curr. Opin. Neurobiol.* **11**, 734-738.
- Pollack, G. S. and Hoy, R. R.** (1979). Temporal pattern as a cue for species-specific calling song recognition in crickets. *Science* **204**, 429-432.
- Popov, A. V. and Shuvalov, V. F.** (1977). Phonotactic behavior of crickets. *J. Comp. Physiol. A* **119**, 111-126.
- R Core Team** (2014). *R: A Language and Environment for Statistical Computing*. Vienna, Austria: R Foundation for Statistical Computing.
- Ritchie, M. G.** (1996). The shape of female mating preferences. *Proc. Natl. Acad. Sci. USA* **93**, 14628-14631.
- Rothbart, M. M. and Hennig, R. M.** (2012). Calling song signals and temporal preference functions in the cricket *Teleogryllus leo*. *J. Comp. Physiol. A* **198**, 817-825.
- Ryan, M. J.** (1988). Coevolution of sender and receiver: effect on local mate preference in cricket frogs. *Science* **240**, 1786-1788.
- Ryan, M. J. and Keddy-Hector, A.** (1992). Directional patterns of female mate choice and the role of sensory biases. *Am. Nat.* **139**, S4-S35.
- Ryan, M. J. and Rand, A. S.** (2001). Feature weighting in signal recognition and discrimination by túngara frogs. In *Anuran Communication* (ed. M. J. Ryan), pp. 86-101. Washington, DC: Smithsonian Institution Press.
- Ryan, M. J., Rand, W., Hurd, P. L., Phelps, S. M. and Rand, A. S.** (2003). Generalization in response to mate recognition signals. *Am. Nat.* **161**, 380-394.
- Schildberger, K.** (1984). Temporal selectivity of identified auditory neurons in the cricket brain. *J. Comp. Physiol. A* **155**, 171-185.
- Shaw, K. L. and Herlihy, D. P.** (2000). Acoustic preference functions and song variability in the Hawaiian cricket *Laupala cerasina*. *Proc. R. Soc. B Biol. Sci.* **267**, 577-584.
- Sokal, R. R. and Rohlf, F. J.** (2012). *Biometry: the Principles and Practice of Statistics in Biological Research*, 4th edn. New York: WH Freeman and Co.
- Stout, J. F. and McGhee, R.** (1988). Attractiveness of the male *Acheta domestica* calling song to females. *J. Comp. Physiol. A* **164**, 277-287.
- Sueur, J. R. M. E.** (2002). Cicada acoustic communication: potential sound partitioning in a multispecies community from Mexico (Hemiptera: Cicadomorpha: Cicadidae). *Biol. J. Linn. Soc.* **75**, 379-394.
- Thorson, J., Weber, T. and Huber, F.** (1982). Auditory behavior of the cricket. *J. Comp. Physiol. A* **146**, 361-378.
- Wagner, W. E., Jr, Murray, A.-M. and Cade, W. H.** (1995). Phenotypic variation in the mating preferences of female field crickets, *Gryllus integer*. *Anim. Behav.* **49**, 1269-1281.
- Walker, T. J.** (1957). Specificity in the response of female tree crickets (Orthoptera, Gryllidae, Oecanthinae) to calling songs of the males. *Ann. Entomol. Soc. Am.* **50**, 626-636.
- Weber, T., Thorson, J. and Huber, F.** (1981). Auditory behavior of the cricket. *J. Comp. Physiol. A* **141**, 215-232.
- Wollerman, L.** (1998). Stabilizing and directional preferences of female *Hyla ebraccata* for calls differing in static properties. *Anim. Behav.* **55**, 1619-1630.
- Wright, S.** (1931). Evolution in Mendelian populations. *Genetics* **16**, 97.
- Zuur, A., Ieno, E. N., Walker, N., Saveliev, A. A. and Smith, G. M.** (2009). *Mixed Effects Models and Extensions in Ecology with R*. New York: Springer.