

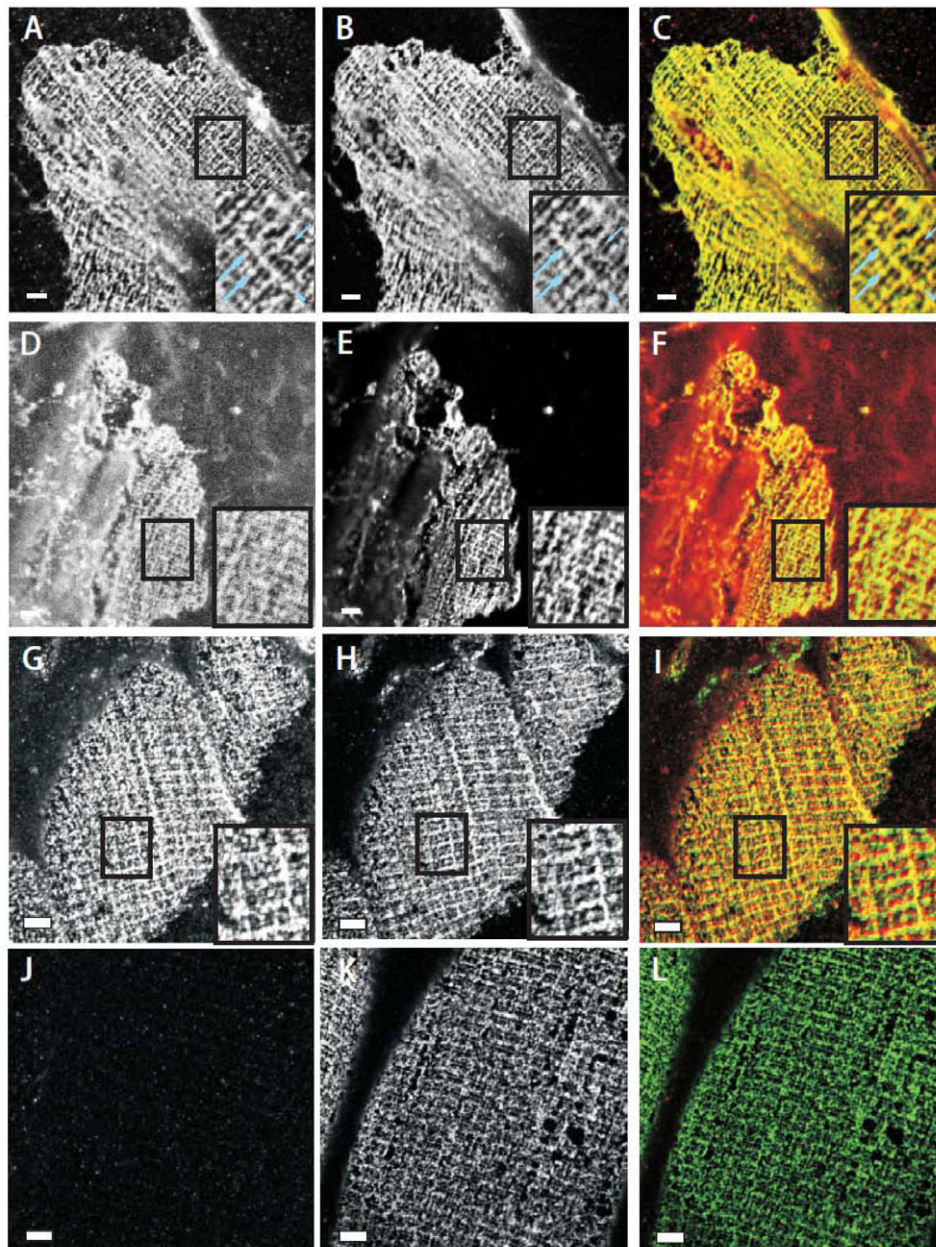
Na,K-ATPase in skeletal muscle: two populations of β -spectrin control localization in the sarcolemma but not partitioning between the sarcolemma and the transverse tubules

McRae W. Williams, Wendy G. Resneck, Tamma Kaysser, Jeanine A. Ursitti, Connie S. Birkenmeier, Jane E. Barker and Robert J. Bloch

Journal of Cell Science 123, 1970
 © 2010. Published by The Company of Biologists Ltd
 doi:10.1242/jcs.074260

There was an error published in *J. Cell Sci.* **114**, 751-762.

In Fig. 1, the authors mistakenly included several panels taken from quadriceps muscle that had been used in a previous publication, rather than original images of the extensor digitorum longus. The corrected figure is shown below.



The authors apologize for this error.