

The calcium-sensing receptor changes cell shape via a β -arrestin-1–ARNO–ARF6–ELMO protein network

Tristan Bouschet^{1,*}, Stéphane Martin¹, Venkateswarlu Kanamarlapudi^{2,‡}, Stuart Mundell² and Jeremy M. Henley^{1,§}

¹Department of Anatomy, MRC Centre for Synaptic Plasticity and ²Department of Pharmacology, School of Medical Sciences, University of Bristol, University Walk, Bristol, BS8 1TD, UK

*Present address: IRIBHM, Campus Erasme, Free University of Brussels, Route de Lennik 808, 1070 Brussels, Belgium

‡Present address: Institute of Life Science, School of Medicine, Swansea University, Singleton Park, Swansea, SA2 8PP, UK

§Author for correspondence (e-mail: j.m.henley@bristol.ac.uk)

Accepted 27 April 2007

Journal of Cell Science 120, 2489–2497 Published by The Company of Biologists 2007
doi:10.1242/jcs.03469

Summary

G-protein-coupled receptors (GPCRs) transduce the binding of extracellular stimuli into intracellular signalling cascades that can lead to morphological changes. Here, we demonstrate that stimulation of the calcium-sensing receptor (CaSR), a GPCR that promotes chemotaxis by detecting increases in extracellular calcium, triggers plasma membrane (PM) ruffling via a pathway that involves β -arrestin 1, Arf nucleotide binding site opener (ARNO), ADP-ribosylating factor 6 (ARF6) and engulfment and cell motility protein (ELMO). Expression of dominant negative β -arrestin 1 or its knockdown with siRNA impaired the CaSR-induced PM ruffling response. Expression of a catalytically inactive ARNO also reduced CaSR-induced PM ruffling. Furthermore, β -arrestin 1 co-immunoprecipitated with the CaSR and ARNO under resting conditions. Agonist treatment did not markedly alter β -arrestin 1 binding to the CaSR or to ARNO but it

did elicit the translocation and colocalisation of the CaSR, β -arrestin 1 and ARNO to membrane protrusions. Furthermore, ARF6 and ELMO, two proteins known to couple ARNO to the cytoskeleton, were required for CaSR-dependent morphological changes and translocated to the PM ruffles. These data suggest that cells ruffle upon CaSR stimulation via a mechanism that involves translocation of β -arrestin 1 pre-assembled with the CaSR or ARNO, and that ELMO plays an essential role in this CaSR-signalling-induced cytoskeletal reorganisation.

Supplementary material available online at
<http://jcs.biologists.org/cgi/content/full/120/15/2489/DC1>

Key words: Calcium-sensing receptor, Cytoskeleton, β -arrestin 1, ARF6, ARNO, ELMO

Introduction

The calcium-sensing receptor (CaSR) is a G-protein-coupled receptor (GPCR) that detects variations in the extracellular calcium concentration ($[Ca^{2+}]_o$) and plays a fundamental role in the maintenance of calcium homeostasis (Bouschet and Henley, 2005; Brown and MacLeod, 2001; Hofer and Brown, 2003). In addition, CaSR activation can lead to stem cells homing and chemotaxis (Adams et al., 2006; Godwin and Soltoff, 1997; Olszak et al., 2000). These locomotive events presumably depend on the ability of CaSR expressing cells to detect a gradient in environmental (extracellular) calcium and induce changes of shape that results in movement towards a calcium gradient.

Chemotaxis involves the dynamic formation and retraction of cytoplasmic protrusions enriched in polymerised filamentous actin (F-actin) at the cell leading edge (Small et al., 2002). This process, known as plasma membrane (PM) ruffling, is essential to locomotion (Ridley et al., 2003). Recent evidence has suggested that, in addition to their well-characterised involvement in GPCR desensitisation (Lefkowitz and Whalen, 2004; Lohse et al., 1990), β -arrestins play a key role in GPCR-mediated PM ruffling (Bhattacharya et al., 2002; Scott et al., 2006) and chemotaxis (Fong et al., 2002; Ge et al., 2003; Ge et al., 2004; Walker et al., 2003). However, the

protein partners coupling β -arrestin to cytoskeleton reorganisation remain to be determined.

ARNO (Arf nucleotide binding site opener, also called cytohesin 2) is a guanine nucleotide exchange factor (GEF) that activates GTP binding on the small G protein ARF6 (ADP-ribosylating factor 6). ARNO interacts with β -arrestins to regulate GPCR-desensitisation (Claing et al., 2001; Mukherjee et al., 2000). Furthermore, exogenous expression of ARNO in Madin-Darby canine kidney (MDCK) epithelial cells results in the formation of broad lamellipodia and cell migration (Santy and Casanova, 2001). These processes of morphological adaptation are impaired when an ARF6 point mutant defective in GTP binding (ARF6T27N) is co-expressed with ARNO (Santy and Casanova, 2001). It has also been reported recently that ARF6 couples to the cytoskeleton via ELMO (engulfment and cell motility protein) (Santy et al., 2005). Overall, these data suggest that an ARNO-ARF6-ELMO signalling module could connect extracellular signals, potentially those acting through GPCR and β -arrestin, to the cytoskeleton.

In this study we test this hypothesis and demonstrate that increasing $[Ca^{2+}]_o$ generates PM ruffles in HEK cells transiently or stably expressing the CaSR. We show that β -arrestin 1 and ARNO are crucial for this CaSR-induced

cytoskeletal reorganisation and that the two ARNO effector proteins ARF6 and ELMO are also required for CaSR-induced PM. These results therefore demonstrate for the first time the involvement of ARNO and its effector ELMO in GPCR-induced cytoskeletal reorganisation.

Results

CaSR stimulation induces plasma membrane ruffling

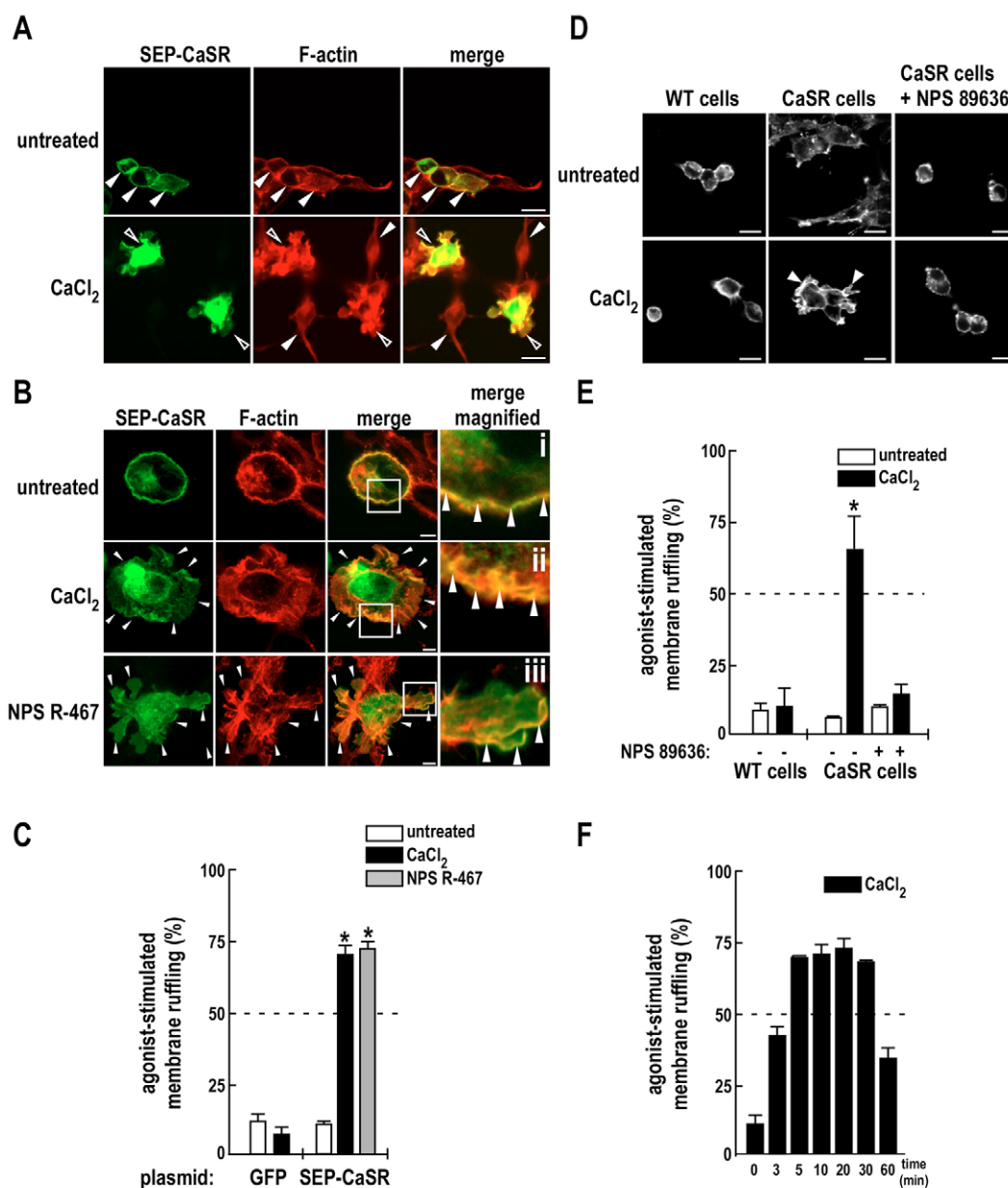
We recently reported the characterisation of a CaSR tagged with the pH sensitive GFP molecule super ecliptic pHluorin

(SEP). This construct named SEP-CaSR allowed us to track cell-surface expressed CaSR (Bouchet et al., 2005). One major advantage of tagging receptors with SEP is that it permits monitoring of the real-time dynamics of SEP-tagged receptors from or to the plasma membrane (PM) (Ashby et al., 2004; Yudowski et al., 2006). Our initial intention was therefore to determine the fate of SEP-CaSR expressed in HEK cells following agonist stimulation. Intriguingly, increasing the extracellular calcium concentration ($[Ca^{2+}]_o$) in cultures of cells transfected with SEP-CaSR resulted in intense

Fig. 1. (A) CaSR stimulation generates PM ruffling. HEK cells were transfected with SEP-CaSR. 48 hours post-transfection, cells were challenged (bottom) or not (top) with 5 mM $CaCl_2$ for 10 minutes, fixed and stained for SEP-CaSR (green) and F-actin (Alexa-Fluor-568-phalloidin, red). Colocalisation areas appear in yellow in the merge panels. Cells exhibiting PM ruffles are shown by empty arrowheads while cells that did not change shape are indicated by filled arrowheads. Bars, 10 μ m.

(B) Representative micrographs of CaSR-agonist-induced cytoskeleton reorganisation in SEP-CaSR-expressing HEK cells before (untreated) and after 5 mM $CaCl_2$ or 10 μ M NPS R-467 stimulation for 10 minutes. Colocalisation of SEP-CaSR (green) and F-actin (red) appears in yellow in the merge panels. The right panels show fourfold magnified views of the boxed regions. Note the presence of SEP-CaSR at the edge of protrusions. The PM ruffles are shown by arrowheads. Bars, 5 μ m. Pictures shown are representative of six independent experiments. (C) Quantification of the effects of CaSR agonists on PM ruffling of cells. These results are the mean \pm s.e.m. of three to six independent experiments. $*P \leq 0.001$ compared with controls.

(D) Extracellular-calcium-mediated PM ruffling is CaSR-dependent. Representative confocal images of F-actin staining of wild-type (WT) or stably expressing CaSR HEK cells challenged with 5 mM $CaCl_2$ for 10 minutes, in the presence (+) or absence (-) of CaSR antagonist (NPS 89636 at 1 μ M, pre-incubated for 10 minutes). Ruffling cells are indicated by arrowheads. Bars: 10 μ m. (E) Quantification of cells exhibiting PM ruffling in the conditions described in (D). The results shown are the mean \pm s.e.m. of three independent experiments. $*P \leq 0.001$ compared with untreated. (F) Time course of CaSR-induced PM ruffling. The percentage of SEP-CaSR-expressing cells exhibiting PM ruffling after different times of $CaCl_2$ stimulation was determined. All time points of stimulation were significantly different ($P \leq 0.001$) from the untreated (time 0 minutes) condition.



cytoplasmic protrusions that dynamically extended and retracted (see supplementary material Movie 1). This process of PM ruffling is central to cell locomotion (Ridley et al., 2003; Small et al., 2002) and, although chemotactic actions of CaSR have been reported (Godwin and Soltoff, 1997; Olszak et al., 2000), this is to our knowledge the first report of CaSR-induced PM ruffling.

Fig. 1A illustrates that an increase in $[Ca^{2+}]_o$ from 1 to 5 mM resulted in a marked actin polymerisation (filamentous actin stained with Alexa-Fluor-568–phalloidin) at the extending cell surface of HEK cells expressing SEP-CaSR but not in neighbouring untransfected HEK cells that do not express endogenous CaSR (Bouschet et al., 2005). The shape of HEK cells expressing SEP-CaSR was also dramatically changed by addition of the selective allosteric CaSR activator NPS R-467 (10 μ M) but not by the S-enantiomer NPS S-467, which is 10–100-fold less potent in activating CaSR (not shown). In all cases the CaSR was present at the edge of the protrusions (Fig. 1B).

Calcium- and NPS R-467-induced morphological changes occurred in the majority of SEP-CaSR cells ($70.4 \pm 3.5\%$ and $72.5 \pm 3.1\%$, respectively, after 10 minutes, $P < 0.001$ compared with the untreated cells) (Fig. 1C). Increased $[Ca^{2+}]_o$ had no effect in neighbouring untransfected or GFP-only-expressing HEK cells (Fig. 1A,C). To confirm these effects are CaSR-dependent, wild-type (WT) or stably expressing CaSR HEK

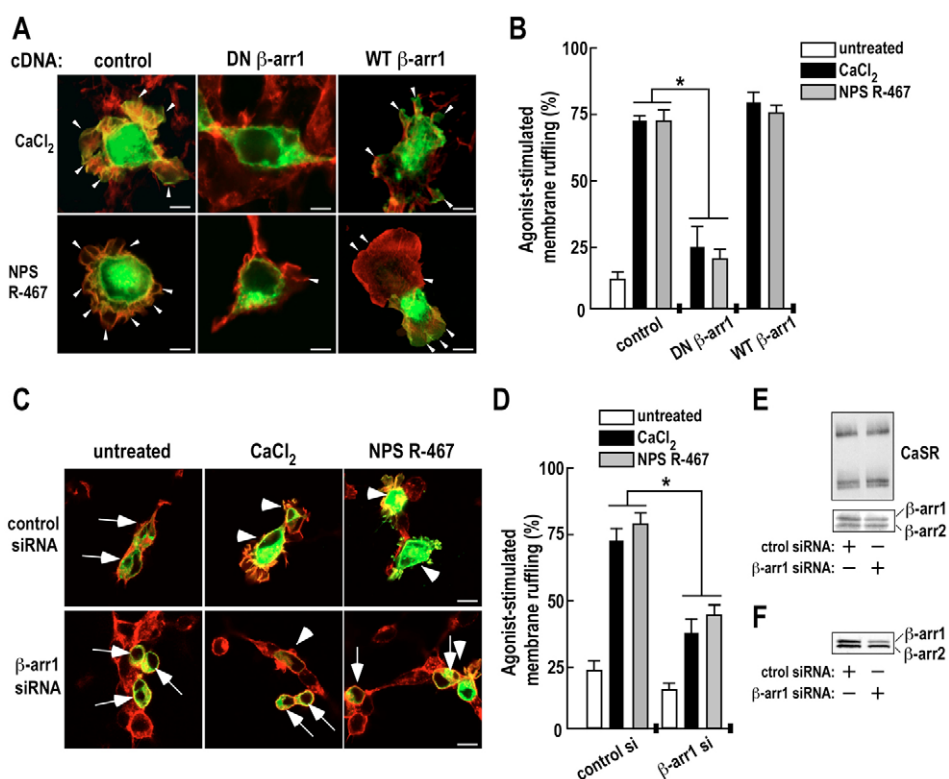
cells (cell line characterised in supplementary material Fig. S1) were challenged with $CaCl_2$ in the presence or absence of a CaSR antagonist (NPS 89636, 1 μ M). As shown in Fig. 1D, $CaCl_2$ elicited robust PM ruffling in CaSR-HEK cells (from $6 \pm 1.2\%$ to $74.7 \pm 13.3\%$, $P < 0.001$; see also supplementary material Movie 2 and Movie 3) but not in control HEK cells ($10.7 \pm 7.7\%$ following calcium treatment, not significantly different from the $8.7 \pm 3.3\%$ of the untreated cells, $P > 0.05$) (Fig. 1D,E). Pre-incubation with the CaSR antagonist NPS 89636 prevented the ruffling response induced by calcium ($15 \pm 4.4\%$ in the presence of antagonist versus $74.7 \pm 13.3\%$ in DMSO control solution, $P < 0.001$) (Fig. 1D,E). Cytoplasmic protrusions developed rapidly following agonist treatment (within 3 minutes) and the number of cells bearing protrusions reached a plateau within 5–10 minutes after agonist addition (Fig. 1F). The extent of ruffling diminished after 30 minutes but was still significantly raised above basal level 1 hour after $CaCl_2$ stimulation (Fig. 1F).

β -arrestin 1 is required for CaSR-induced PM ruffling

We next investigated the molecular mechanisms underlying CaSR-induced ruffling. We reasoned that β -arrestins represent particularly attractive candidates because they are involved in GPCR-induced migration (Ge et al., 2003; Ge et al., 2004; Sun et al., 2002) and in CaSR desensitisation (Pi et al., 2005). We therefore co-expressed SEP-CaSR with a dominant negative

Fig. 2. β -arrestin 1 is required for CaSR-induced PM ruffling.

(A) Expression of a dominant negative form of β -arrestin 1 impairs CaSR-induced PM ruffling. Representative pictures of HEK cells expressing SEP-CaSR in combination with dominant negative β -arrestin 1 (319–418) or wild-type (WT) β -arrestin 1. HEK cells were co-transfected with SEP-CaSR (1 μ g) and excess (4 μ g) dominant negative β -arrestin 1 (319–418), wild-type (WT) β -arrestin 1 or CAT (as a control plasmid). Cells were stimulated with CaSR agonists (5 mM $CaCl_2$, 10 μ M NPS R-467) for 10 minutes, fixed and stained for SEP-CaSR (green), and F-actin (red). Arrowheads indicate ruffles. The micrographs are representative of three independent experiments. (B) Histogram (expressed as mean \pm s.e.m.) of CaSR agonist-induced PM ruffling in the conditions presented in A. $*P \leq 0.001$ compared with control plasmid-expressing cells stimulated with agonists ($n=3$). (C) siRNA-mediated silencing of β -arrestin 1 impairs CaSR-induced PM ruffling. HEK cells were transfected with a siRNA duplex targeting β -arrestin 1 (or a siRNA control) together with SEP-CaSR. 50 hours post-transfection, cells were stimulated with agonists, imaged and scored. Arrows indicate transfected cells whose morphology was unaffected and arrowheads point to the ruffles. (D) Quantification of data represented in C. $*P \leq 0.001$ compared with control siRNA-expressing cells stimulated with agonists. (E) Protein samples prepared in parallel to the ruffling experiments from cells transfected simultaneously with CaSR and siRNA, described in C and D, were probed with CaSR (top panel) and pan β -arrestin (A1CT, bottom panel) antibodies, respectively. (F) Pan β -arrestin (A1CT) blot of cells transfected with control or β -arrestin 1 siRNA alone showing $\sim 60\%$ knockdown of β -arrestin 1 (see text for details).



(DN) form of β -arrestin 1 (Krupnick et al., 1997). The DN, but not WT, β -arrestin 1 caused a marked decrease in CaSR-induced PM ruffling (Fig. 2A,B). Similarly, when the GPCR was co-expressed with a siRNA targeting β -arrestin 1 (Ahn et al., 2003), we observed a significant reduction in ruffling induced by calcium ($72.2 \pm 5.6\%$ for control siRNA reduced to $37 \pm 5.6\%$ for β -arrestin 1 siRNA, $P < 0.001$) or NPS R-467 ($79.3 \pm 4.1\%$ for control siRNA versus $43.7 \pm 4.3\%$ for β -arrestin 1 siRNA, $P < 0.001$) (Fig. 2C,D). Note that control or β -arrestin 1 siRNA were co-transfected with the plasmid encoding SEP-CaSR resulting in a specific $\sim 30\%$ decrease in β -arrestin 1 levels (Fig. 2E). When siRNA alone was transfected there was a $\sim 60\%$ decrease in β -arrestin 1 consistent with previous reports (Ahn et al., 2003; Ge et al., 2004) (Fig. 2F).

Intracellular molecules mediating cell migration exert part of their function by relocating to the cell leading edge (Kraynov et al., 2000; Ridley et al., 2003). Application of calcium or NPS-R467 resulted in the rapid translocation of GFP- β -arrestin 1 from the cytosol to PM ruffles (Fig. 3A; see supplementary material Movies 4 and 5), where there was partial colocalisation with F-actin (Fig. 3B). The current model of β -arrestin coupling to GPCR is that agonist stimulation drives the recruitment of β -arrestin which, in turn, recruits associated signalling and/or internalisation molecules (Lefkowitz and Whalen, 2004). We therefore co-transfected CaSR with Flag- β -arrestin 1 and measured their association by co-immunoprecipitation. Consistent with a recent report of direct binding of β -arrestin 1 to the receptor (Pi et al., 2005), β -arrestin 1 specifically co-immunoprecipitated with the CaSR under basal non-stimulated conditions (Fig. 3C). Interestingly, CaCl_2 stimulation did not detectably alter the extent of CaSR- β -arrestin 1 association, which suggests that this interaction is not dynamically regulated by agonist stimulation (Fig. 3C).

Expression of catalytically inactive ARNO impairs CaSR-induced PM ruffling

To explore which proteins link β -arrestin 1 to the cytoskeleton we first tested for the involvement of ARNO, a β -arrestin 1 interactor (Claing et al., 2001) that activates ARF6 and generates PM ruffling when overexpressed in MDCK cells (Santy and Casanova, 2001). Although ARNO is known to participate in GPCR desensitisation (Claing et al., 2001; Mukherjee et al., 2000), its role in GPCR-dependent PM ruffling has not been established. CaSR-HEK cells were transfected with either ARNO(E156K), a catalytically inactive point mutant, WT-ARNO or GFP alone. ARNO(E156K), but not WT-ARNO, expressing CaSR-HEK cells exhibit significantly lower PM ruffling than control GFP-expressing cells (Fig. 4A,B; $59.2 \pm 3.4\%$ for GFP calcium, $37.7 \pm 3.9\%$ for ARNO(E156K) calcium, $P < 0.01$ compared with GFP calcium, $53 \pm 2.5\%$ for WT-ARNO calcium, $P > 0.05$ compared with GFP calcium). Furthermore, following CaSR activation, Myc-ARNO was redistributed to the ruffles (Fig. 4C).

We next co-transfected CaSR-HEK cells with Flag- β -arrestin 1 and Myc-ARNO and co-immunoprecipitated using anti-Flag beads. Consistent with a previous report (Claing et al., 2001), Myc-ARNO (or GFP-ARNO, not shown) specifically associated with Flag- β -arrestin 1 in resting conditions (Fig. 5A). Myc-ARNO(E156K), which blocked PM ruffling (Fig. 4), also bound to β -arrestin 1 (Fig. 5B). Interestingly, agonist stimulation did not substantially modify

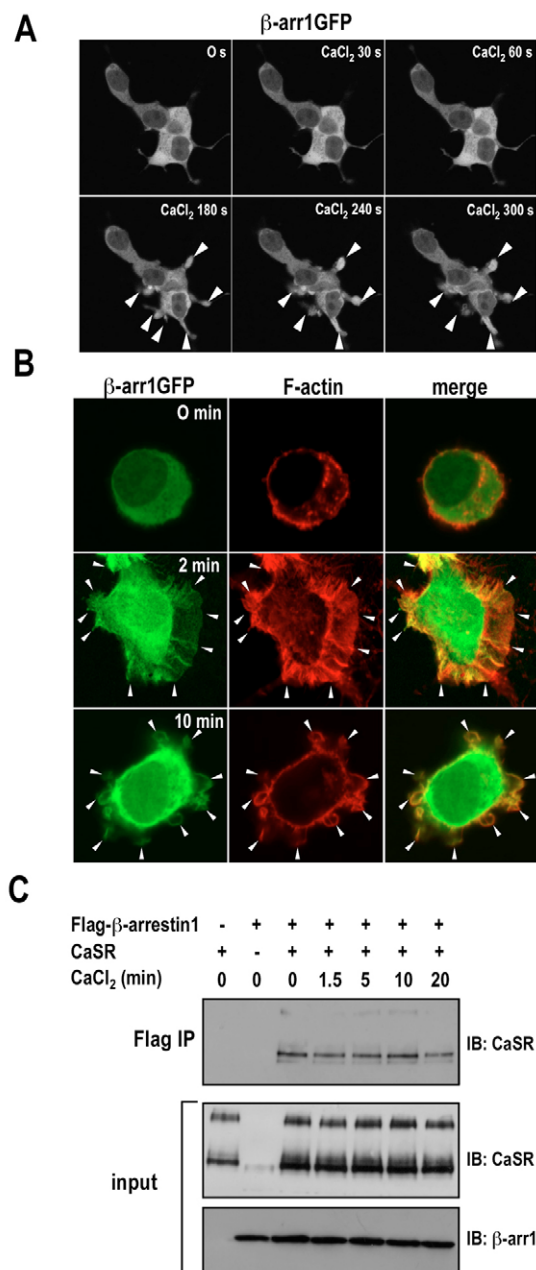


Fig. 3. Effect of CaSR stimulation on β -arrestin 1.

(A) Representative frames from live confocal microscopy experiments showing the subcellular redistribution of GFP- β -arrestin 1 in HEK cells co-expressing CaSR before (0 seconds) and after (30–300 seconds) activation by 5 mM CaCl_2 . (B) HEK cells co-expressing GFP- β -arrestin 1 and CaSR (1 and 4 μg , respectively) were stimulated with 5 mM CaCl_2 for 2 or 10 minutes, fixed and stained for F-actin. Colocalisation of GFP- β -arrestin 1 (green) and F-actin (red) appears in yellow. Arrows indicate ruffles. Bar, 5 μm . Data are representative of four independent experiments. (C) The CaSR is constitutively associated with β -arrestin 1. HEK293 cells were transfected with SEP-CaSR and Flag- β -arrestin 1 in the indicated combinations. 48 hours post-transfection, cells were stimulated with 5 mM CaCl_2 for different periods of time and lysed. 400 μg of resulting proteins were subjected to immunoprecipitation (IP) using sepharose beads coupled to Flag-M2 antibodies. CaSR present in the immunoprecipitate and total fractions of CaSR and β -arrestin 1 (input) were assessed by immunoblotting (IB).

the association between β -arrestin 1 and ARNO (Fig. 5C) but the proteins colocalised together at nascent and mature ruffles (obtained after a CaSR stimulation of 1 and 10 minutes, respectively (Fig. 5D), consistent with translocation, rather than formation of the complex, being a key factor. Interestingly, we saw triple colocalisation of CaSR, β -arrestin 1 and ARNO in the ruffles (Fig. 5E), which suggests they could associate to form a signalling unit in this structure.

ARF6 and ELMO, two ARNO effectors, are also required for CaSR-induced PM ruffling

In MDCK cells, expression of ARNO exerts its effect on cell

shape and migration via ARF6 (Santy and Casanova, 2001). Therefore, we tested whether ARF6 has a role in mediating the ARNO effect on CaSR-induced PM ruffling in HEK cells. Expression of GFP-ARF6(T27N), a dominant negative mutant that is defective in GTP binding, but not of WT-ARF6, significantly antagonized the CaSR effect on cell shape (Fig. 6A,B). In addition, endogenous ARF6 translocated to CaSR-induced ruffles (Fig. 6C). Finally, we tested whether ELMO, a protein whose ortholog CED-12 is involved in the engulfment of apoptotic cells in *C. elegans* (Gumienny et al., 2001) and that was recently identified as coupling ARNO-ARF6 to cytoskeletal reorganisation (Santy et al., 2005), has a role in connecting the CaSR- β -arrestin-1-ARNO-ARF6 signalling unit to morphological change. Expression of ELMOT629, a truncated ELMO lacking the DOCK180-binding domain, was sufficient to reduce significantly the CaSR-induced effect on the cell shape of CaSR-HEK cells (from $59 \pm 3.4\%$ for GFP calcium to $25 \pm 6.4\%$ for GFP-ELMOT629 calcium, $P < 0.001$) (Fig. 7A,B). By contrast, WT-ELMO had no significant effect on ruffling ($57 \pm 2.9\%$, $P > 0.05$ compared with GFP calcium) and was abundant in the PM ruffles (Fig. 7A-C), where it colocalised with Flag-CaSR (Fig. 7C).

Discussion

Migrating cells generate PM ruffles to move towards chemotactic factors (Ridley et al., 2003; Small et al., 2002) and here we show that CaSR stimulation leads to PM ruffling that likely underlie the reported chemotactic functions of extracellular calcium on CaSR-expressing cells (Godwin and Soltoff, 1997; Olszak et al., 2000). Indeed, using a Boyden-related migration assay (supplementary material Fig. S2) we demonstrate that CaSR-expressing HEK cells move up a calcium gradient.

β -arrestin 1, ARNO, ARF6 and ELMO are targeted to membrane protrusions and they are all required for CaSR-induced PM ruffling. This is the first report that ARNO and ELMO are involved in GPCR-dependent changes in cell shape and, based on these data, we propose that the β -arrestin-ARNO-ARF6-ELMO module may provide a general molecular mechanism to couple GPCR activation to PM ruffling.

Here, we show for the first time that a rise in extracellular calcium triggers CaSR-dependent ruffling (Fig. 1). Since we have shown previously that SEP-CaSRs have indistinguishable biophysical properties from untagged CaSRs (Bouschet et al., 2005), the presence of SEP fluorescence at the edge of the protrusions (Fig. 1) indicates that the CaSR localises at the surface of ruffles. This may allow CaSR-expressing cells to constantly monitor the direction of a calcium gradient in vivo and to orientate the direction of migration. Significantly in this context, CaSR stimulation also leads to cofilin phosphorylation on serine 3, which is essential for the lamellipodia extension/retraction cycle (Giannone et al., 2004) (T.B. and J.M.H., unpublished). CaSR stimulation also induces stress fibre formation (Davies et al., 2006), a process that parallels PM ruffling during cell migration (Ridley et al., 2003). Furthermore, this is consistent with the extracellular calcium-induced increase in chemotaxis we observed (supplementary material Fig. S2). In our system the increase in chemotaxis was relatively modest ($\sim 20\%$), possibly reflecting the fact that, in our chemotaxis assay, extracellular calcium in the basal

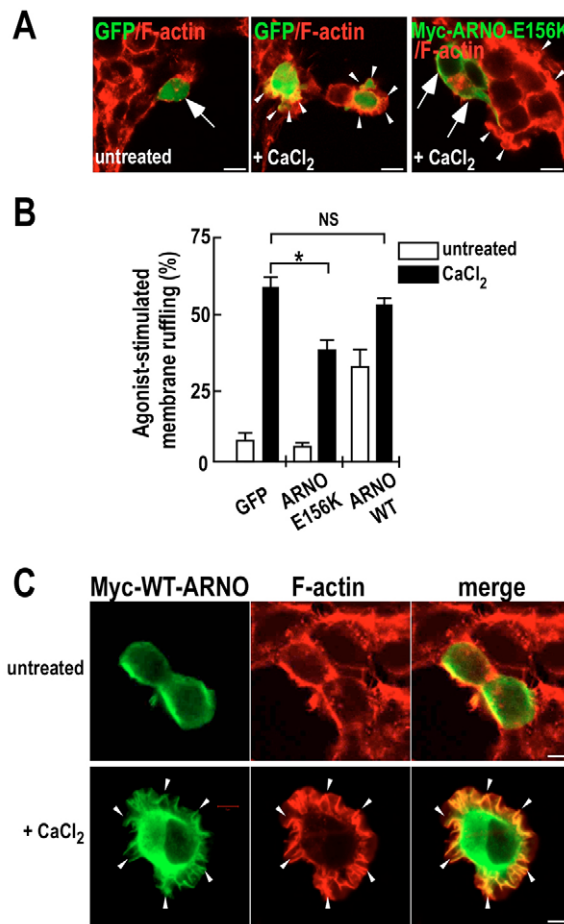
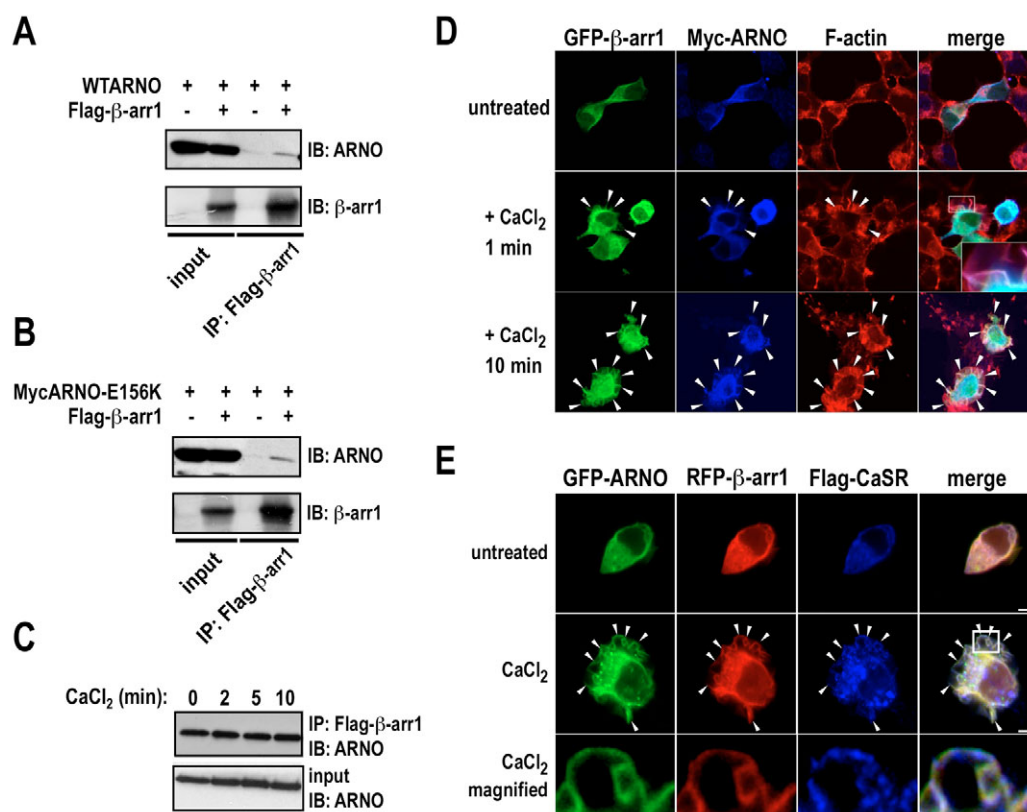


Fig. 4. Role of ARNO in CaSR-induced PM ruffling.

(A) ARNO(E156K) impairs CaSR-induced PM ruffling. CaSR-HEK cells expressing GFP, Myc-ARNO(E156K) or Myc-WT-ARNO (cells shown in C) were stimulated with 5 mM CaCl_2 for 10 minutes, fixed and stained for Myc-ARNO (using 9E10 anti-Myc monoclonal antibody followed by a Cy2-labelled anti-mouse Ab) (green), and F-actin (red). Arrows indicate the cells that did not change shape. Arrows point to transfected cells whose morphology was unaffected and arrowheads point to ruffles. The micrographs are representative of three independent experiments. Bar, 10 μm . (B) Quantification of CaSR-induced PM ruffling illustrated in A. $*P \leq 0.001$. NS, no significant difference between tested conditions ($P > 0.05$); $n = 3$. (C) Myc-ARNO-expressing CaSR-HEK cells were challenged or not with 5 mM CaCl_2 for 10 minutes, fixed and stained for Myc-ARNO and F-actin as described in A. Bar, 5 μm . Note ARNO relocation to protrusions following CaSR stimulation.

Fig. 5. β -arrestin 1 interacts and colocalises with ARNO.

(A) Myc-WT-ARNO co-immunoprecipitates with Flag- β -arrestin 1. CaSR-HEK cells were transfected with plasmids encoding Myc-WT-ARNO \pm Flag- β -arrestin 1. 48 hours post-transfection, cells lysates were prepared and subjected to immunoprecipitation using Flag beads (see Materials and Methods). Retained proteins were eluted with Laemmli's buffer and immunoblotted using anti- β -arrestins and ARNO antibodies. A total of the lysate (input) was run in parallel. (B) Catalytically inactive Myc-ARNO(E156K) co-immunoprecipitates with Flag- β -arrestin 1. (C) CaSR stimulation does not affect ARNO association with Flag- β -arrestin 1. Cells co-expressing WT-ARNO and Flag- β -arrestin 1 were stimulated with CaCl_2 for the indicated periods of time and Flag immunoprecipitation was performed as in A. Total ARNO and ARNO bound to Flag- β -arrestin 1 are shown. (D) Colocalisation of Myc-WT-ARNO and GFP- β -arrestin 1 in protrusions. Transfected CaSR-HEK cells were challenged with 5 mM CaCl_2 for 1 or 10 minutes, fixed and stained for GFP- β -arrestin 1 (green), Myc-ARNO (using 9E10 Ab followed by a Cy5-coupled anti-mouse Ab, shown in blue) and F-actin (Alexa-Fluor-568-phalloidin, red). An inset showing a magnified view for the 1 minute stimulation highlights β -arrestin 1 and ARNO colocalisation in protrusions. Bar, 5 μm . (E) GFP-ARNO, RFP- β -arrestin 1 and Flag-CaSR colocalise in protrusions. Transfected HEK cells were challenged with 5 mM CaCl_2 for 10 minutes, fixed and stained for GFP-ARNO (green), mRFP- β -arrestin 1 (red) and Flag-CaSR (detected by mouse anti-Flag Ab followed by a Cy5-coupled anti-mouse Ab, blue). A magnified view of the PM ruffling area is shown in the bottom panels. Merge areas appear in white. Bar, 5 μm .



medium is at a concentration sufficient to activate the CaSR (1.8 mM CaCl_2). Several reports have implicated β -arrestins in cell migration mediated by GPCR (Bhattacharya et al., 2002; Fong et al., 2002; Ge et al., 2003). Here, we show that a DN form of β -arrestin 1, or its knockdown by RNA interference, strongly affect CaSR-induced morphological changes, consistent with it playing a role in CaSR-induced ruffling (Fig. 2). Given that the β -arrestin 1 knockdown was not 100% effective and that the DN form of β -arrestin 1 could also interfere with the closely related β -arrestin 2, we cannot completely rule out the possibility that β -arrestin 2 also participates in CaSR-induced ruffles. A widespread model for the actions of β -arrestins is that they bind to phosphorylated GPCRs, thereby recruiting downstream effector proteins (Lefkowitz and Whalen, 2004). For CaSR-induced PM ruffling, however, this appears not to be the case, since we observe a constitutive binding of β -arrestin 1 to the CaSR that is not markedly altered by receptor stimulation (Fig. 3). Interestingly, a similar result was reported for the association of β -arrestin 1 with mGluR (Dale et al., 2001), a receptor belonging to the same GPCR family as the CaSR (class C GPCRs). Thus, although β -arrestin 1 is required for CaSR-induced ruffling, there is no apparent recruitment of β -arrestin 1 to the receptor and the transduction complex is already

assembled. What could then be the mechanism of β -arrestin 1 action? By analogy with active Rac1 forming a gradient culminating at the cell edge (Kraynov et al., 2000), β -arrestin 1 may ensure its function by relocating to the forming ruffles to recruit specific machinery (Fig. 3). Indeed, β -arrestin 1 becomes enriched in pseudopodia, where it sequesters ERK1/2 necessary for PAR-2-induced chemotaxis (Ge et al., 2003). In addition to ERK1/2, several other proteins have been reported to participate in β -arrestin-1-mediated PM ruffling. For example, fMLP-receptor-induced PM ruffling depends on the dissociation of RalGDS from β -arrestin 1 and subsequent RalA activation (Bhattacharya et al., 2002). Activation of the Ral pathway (and therefore subsequent PM ruffling) does not require endocytic function of β -arrestin 1 (Bhattacharya et al., 2002). Recent evidence has suggested that β -arrestin 1 does not modulate CaSR endocytosis in HEK cells (Lorenz et al., 2007).

We also show that ARNO plays a key role in GPCR-induced cell-shape change and that, in common with CaSR and β -arrestin 1, it translocates to PM ruffles (Fig. 4). Since the inactive mutant ARNO(E156K) binds to β -arrestin 1 (Fig. 5), it is likely that overexpression of this catalytically inactive mutant competitively inhibits binding of endogenous ARNO, thereby blocking the CaSR transduction cascade. No marked

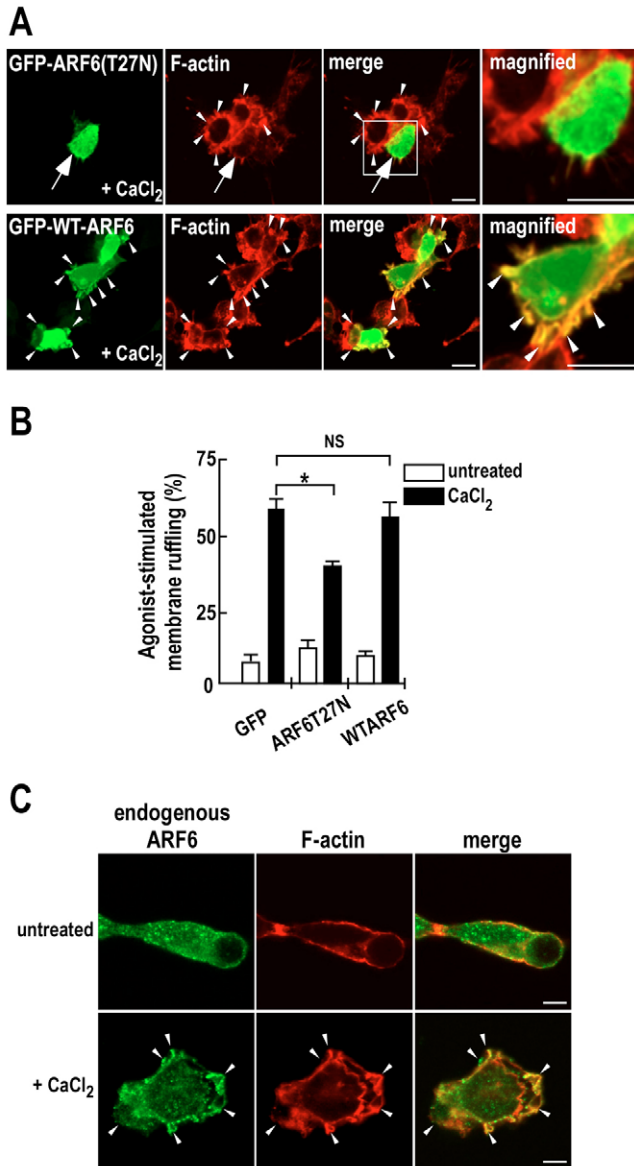


Fig. 6. ARF6 is involved in CaSR-induced PM ruffling. (A) ARF6(T27N) impairs CaSR-induced PM ruffling. CaSR-HEK cells transfected with GFP, GFP-ARF6T27N or GFP-ARF6WT were treated with 5 mM CaCl₂ for 10 minutes, fixed and stained for F-actin (red). The micrographs are representative of three independent experiments. Arrowheads indicate cells exhibiting ruffles and the arrow indicates the cell that did not ruffle. Bars, 10 μ m. Right panels are a magnified view of inserts. (B) Quantification of CaSR-induced PM ruffling in cells presented in (A). * $P \leq 0.001$. NS, no significant difference ($P > 0.05$, $n = 3$). (C) Endogenous ARF6 is targeted to PM ruffles. CaSR-HEK cells were challenged with 5 mM CaCl₂ for 10 minutes, fixed and stained for endogenous ARF6 (using a rabbit anti-ARF6 Ab followed by a Cy2-coupled anti-rabbit Ab, green) and for F-actin (red). Ruffles are indicated by arrowheads. Colocalisation areas appear in yellow. Bars, 5 μ m.

changes in the levels of ARNO or CaSR association with β -arrestin 1 were detected on calcium stimulation (Fig. 5), which suggests that either an, as yet unknown, additional partner is required for their activation or that the complex relocates to ruffles (Fig. 5E) is sufficient for their signalling function.

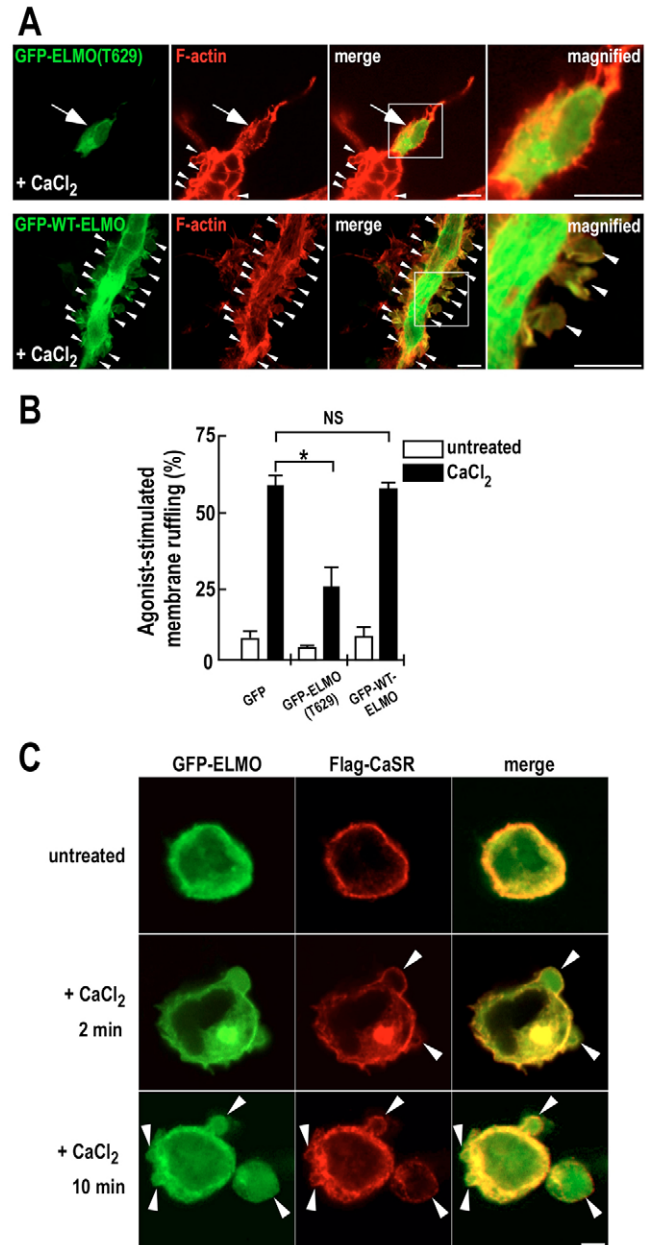


Fig. 7. ELMO is involved in CaSR-induced PM ruffling. (A) Expression of GFP-ELMO(T629) but not GFP-WT-ELMO impairs CaSR-induced PM ruffling. CaSR-HEK cells transfected with GFP-ELMO(T629), GFP-WT-ELMO or GFP were stimulated with 5 mM CaCl₂ for 10 minutes, fixed and stained for GFP (green) and F-actin (red). The micrographs are representative of three independent experiments. Arrowheads indicate cells exhibiting ruffles and arrows indicate cells not ruffling. Right panels are a magnified view of the boxed regions in the merge panels. (B) Quantification of cells presented in (A). * $P \leq 0.001$. NS, not significantly different ($P > 0.05$) ($n = 3$). (C) GFP-ELMO and Flag-CaSR colocalise in protrusions. HEK cells co-expressing the two plasmids indicated above were challenged with 5 mM CaCl₂ for 2 or 10 minutes, fixed and stained for GFP-ELMO (green) and Flag-CaSR (red). Arrowheads show protrusions, and colocalisation areas appear in yellow. Bar, 5 μ m.

ARF6 and ELMO are also associated with the CaSR- β -arrestin-1-ARNO signalling unit since dominant negative

mutants of these ARNO effector proteins (Santy and Casanova, 2001; Santy et al., 2005) impaired CaSR ruffling (Figs 6, 7). To our knowledge, this is the first report describing a role for ARNO in GPCR-mediated ruffling and for ELMO in any form of GPCR signalling.

In conclusion, here we demonstrate that, in common with some other GPCRs, CaSRs induce cytoskeletal reorganisation and PM ruffling. Further, we elucidate key components of the signalling cascade that allows CaSR activation to mediate PM ruffling, a prerequisite for cell migration. These results provide a framework for future investigations to determine whether this is a general signalling pathway for other GPCRs. Furthermore, our findings make accessible a series of potential targets for molecular manipulation to allow better understanding of the mechanisms involved in ruffling and possible sites for intervention, with a view to regulating these processes experimentally in normal and pathological conditions.

Materials and Methods

Materials

The CaSR agonist NPS R-467 and antagonist NPS 89636 were kindly provided by Edward Nemeth and Alan Mueller (NPS Pharmaceuticals, Salt Lake, UT). Rabbit anti- β -arrestins (A1CT) and anti-ARF6 antibodies were provided by Robert Lefkowitz (Duke University, Durham, NC) and Julie Donaldson (NIH, Bethesda, MD), respectively. Rabbit anti-ARNO antibody was kindly provided by Sylvain Bourgoin (Université Laval, Québec, Canada). Mouse monoclonal anti-CaSR and anti-Myc (9E10) antibodies were from Affinity Bioreagents and Roche, respectively. Mouse monoclonal anti-MAP kinase activated (diphosphorylated ERK-1 and 2) and β -tubulin antibodies were from Sigma. Peroxydase-linked secondary antibodies were from Amersham. Minimal interspecies cross-reaction secondary antibodies coupled to Cy2, Cy3 and Cy5 fluorophores were from Jackson ImmunoResearch Laboratories. Alexa-Fluor-568-phalloidin was from Molecular Probes.

Cell culture, transfection and expression plasmids

Human embryonic kidney (HEK) cells were grown and transfected as previously described (Bouschet et al., 2005). The following plasmids were used: pRK5-CaSR (Ruat et al., 1995) and pRK5-SEPCaSR (Bouschet et al., 2005). Flag-CaSR was kindly provided by Gerda Breitwieser (Syracuse University, NY). GFP, WT and dominant negative β -arrestin 1 (Krupnick et al., 1997) were generously provided by Jeffrey Benovic (Thomas Jefferson University, Philadelphia, PA). mRFP- β -arrestin 1 was a kind gift from Eric Prossnitz (University of New Mexico, Albuquerque, NM). Flag- β -arrestin 1 was obtained from Robert Lefkowitz. GFP-ARNO was previously described (Venkateswarlu et al., 1998). GFP-WT-ARF6 and GFP-ARF6(T27N) were generated by PCR amplification of HA-WT-ARF6 and HA-ARF6(T27N), respectively, subsequent digestion with *Bam*HI/*Eco*RI, and cloned into *Bg*III/*Eco*RI of pGFP-N1 (Clontech). Myc-ARNO, Myc-ARNO(E156K) (Santy and Casanova, 2001), GFP-ELMO and GFP-ELMO(T629) (Santy et al., 2005) were kindly provided by Lorraine Santy (Pennsylvania State University, University Park, PA). As an internal control, cells were transfected with Chloramphenicol Acetyl Transferase (CAT) cDNA to adjust the cDNA levels and the translation efficiency between the different conditions.

HEK cells stably expressing rat CaSR were generated by co-transfecting pRK5-CaSR with pSV2-BSR (encoding the blasticidin-resistance gene). Selection was achieved in media supplemented with 600 μ g/ml blasticidin and positive clones were selected on three criteria: purity (100% of cells expressing the receptor), surface expression of the receptor and functionality of the receptor (positive coupling to ERK1 and 2) (see supplementary material Fig. S1).

siRNA synthesis and transfection

Chemically synthesised, duplex siRNAs were purchased from Qiagen. We used an effective sequence targeting human β -arrestin 1, AGCCTTCTGCGCGGAGAAT, previously reported (Ahn et al., 2003). One unrelated sequence, TTCTCCGAACGTGTACAGT, showing no significant homology to any known human gene (analysed using a BLAST search) was used for the control siRNA. siRNAs were transfected – in combination or not with SEP-CaSR – using Transit-KO according to the manufacturers' instructions (Mirus).

Confocal microscopy

All samples were analyzed by confocal laser-scanning microscopy using a Zeiss LSM510 META confocal system as described (Bouschet et al., 2005).

Plasma membrane ruffling

Cells seeded on 6 cm dishes were transfected as described in the figure legends. Cells were transferred the following day onto collagen-coated coverslips and used after 48–72 hours expression. Cells were rinsed in Earle's low calcium media (140 mM NaCl, 5 mM KCl, 1 mM CaCl₂, 0.8 mM MgCl₂, 25 mM HEPES pH 7.4, 0.9 g D-glucose) to reduce CaSR activity. After a 10 minute incubation at 37°C, cells were treated as indicated in the figure legends, rinsed with PBS and fixed for 20 minutes in a 4% paraformaldehyde solution. Cells were then incubated with primary antibodies for 1 hour and antibodies were revealed with secondary antibodies coupled to Cy2 or Cy5. F-actin was subsequently stained with Alexa-Fluor-568-conjugated phalloidin (Molecular Probes) in a 2% BSA solution (in PBS). Membrane ruffling was visualised by confocal microscopy. A cell was scored as ruffling when meeting one of these three criteria: (1) more than three ruffles; (2) a circular ruffling, or (3) more than a doubling in size. Cells present in the centre of clusters were not analysed since they are difficult to score. For each condition, the percentage of ruffling cells averaged over 5 separate randomly chosen microscope fields was determined and at least 50 cells were counted. All PM ruffling experiments were replicated at least three times.

Live-cell confocal imaging

Live-cell confocal imaging was performed on the heated stage (set at 37°C) using a 63 \times water-immersion objective, and cells were continually perfused at 2 ml/minute with solutions pre-heated to 37°C.

Immunoprecipitation

Cells were harvested in a lysis buffer consisting of 20 mM Tris pH 7.5, 150 mM NaCl, 10% glycerol, 0.5% NP40, 2 mM EDTA 0.5% Triton X-100, 1 mM PMSF, and a proteases inhibitors cocktail. Lysates were clarified by centrifugation at 12,000 *g* for 10 minutes. 300–400 μ g of resulting proteins were subjected to immunoprecipitation using 15 μ l of Flag-M2 beads (Sigma). After an overnight incubation on a rotating wheel, beads were washed three times with 1 ml of the corresponding lysis buffer and resuspended in Laemmli's buffer.

Western-blotting

Cell lysates resuspended in Laemmli's sample buffer were heated at 95°C for 5 minutes (37°C for 15 minutes when probed for CaSR), and proteins were resolved by SDS-PAGE, blotted onto nitrocellulose membrane, and probed with the indicated antibodies. The nitrocellulose was then incubated with anti-rabbit or anti-mouse/horseradish peroxidase conjugate (1:5000; Amersham Biosciences) for 60 minutes and developed using the west pico chemiluminescence's kit (Pierce).

Chemotaxis assays

The assays were conducted in serum-free DMEM (containing 1.8 mM CaCl₂) using Transwell chambers of 24-well inserts with 8 μ m pore membranes. DMEM solution supplemented or not with high calcium (5 mM) was placed in the lower chamber and 10⁵ HEK CaSR cells were placed in the upper chamber and incubated for 5 hours at 37°C and 5% CO₂. Membranes were then fixed and cells stained with DAPI. Cells were removed from the upper chamber, leaving only those that migrated through the membrane pores. The membrane was then excised, mounted on slides, and cells were counted on five separate fields on a fluorescence microscope (see supplementary material Fig. S2).

Data analysis

Statistical analyses were calculated using Graph Pad Prism 4 (Graph Pad Software). Data are expressed as mean \pm s.e.m. Statistical significances were assessed by an unpaired *t*-test or one way ANOVA test followed by a Newman-Keuls multiple comparison test when required.

We thank Lorraine Santy, Julie Donaldson, Gerda Breitwieser, Jeffrey Benovic, Eric Prossnitz, Robert Lefkowitz and Edward Nemeth for sharing materials. We acknowledge the input and comments from Daniela Riccardi, Stéphanie Pellegrin, Kate Nobes, Michel Franco, Donald Ward, Russel McLaughlin, Atsushi Nishimune, Henry Martin and from other members of the Henley lab. We thank Frederic Jaskolski, Sriharsha Kantamneni, David Holman, Stéphane Peineau, Dan Rocca and Vincent Vilette for critical reading of the manuscript and Philip Rubin for excellent technical assistance. We thank Thalie Devosse, Michael Horckmans and Jean-Yves Springael for providing us with cells and advice during the revision process. J.M.H. is supported by the Wellcome Trust, the MRC and the EU. T.B. and S.M. were supported in part by an ITRF from the Wellcome Trust. S.J.M. holds a British Heart Foundation Basic Science Lectureship. V.K. is supported by the BBSRC, the MRC and the Royal Society.

References

- Adams, G. B., Chabner, K. T., Alley, I. R., Olson, D. P., Szczepiorkowski, Z. M., Poznansky, M. C., Kos, C. H., Pollak, M. R., Brown, E. M. and Scadden, D. T. (2006). Stem cell engraftment at the endosteal niche is specified by the calcium-sensing receptor. *Nature* **439**, 599-603.
- Ahn, S., Nelson, C. D., Garrison, T. R., Miller, W. E. and Lefkowitz, R. J. (2003). Desensitization, internalization, and signaling functions of beta-arrestins demonstrated by RNA interference. *Proc. Natl. Acad. Sci. USA* **100**, 1740-1744.
- Ashby, M. C., De La Rue, S. A., Ralph, G. S., Uney, J., Collingridge, G. L. and Henley, J. M. (2004). Removal of AMPA receptors (AMPA) from synapses is preceded by transient endocytosis of extrasynaptic AMPARs. *J. Neurosci.* **24**, 5172-5176.
- Bhattacharya, M., Anborgh, P. H., Babwah, A. V., Dale, L. B., Dobransky, T., Benovic, J. L., Feldman, R. D., Verdi, J. M., Rylett, R. J. and Ferguson, S. S. (2002). Beta-arrestins regulate a Ral-GDS Ral effector pathway that mediates cytoskeletal reorganization. *Nat. Cell Biol.* **4**, 547-555.
- Bouschet, T. and Henley, J. M. (2005). Calcium as an extracellular signalling molecule: perspectives on the Calcium Sensing Receptor in the brain. *C. R. Biol.* **328**, 691-700.
- Bouschet, T., Martin, S. and Henley, J. M. (2005). Receptor-activity-modifying proteins are required for forward trafficking of the calcium-sensing receptor to the plasma membrane. *J. Cell Sci.* **118**, 4709-4720.
- Brown, E. M. and MacLeod, R. J. (2001). Extracellular calcium sensing and extracellular calcium signaling. *Physiol. Rev.* **81**, 239-297.
- Claing, A., Chen, W., Miller, W. E., Vitale, N., Moss, J., Premont, R. T. and Lefkowitz, R. J. (2001). beta-Arrestin-mediated ADP-ribosylation factor 6 activation and beta 2-adrenergic receptor endocytosis. *J. Biol. Chem.* **276**, 42509-42513.
- Dale, L. B., Bhattacharya, M., Seachrist, J. L., Anborgh, P. H. and Ferguson, S. S. (2001). Agonist-stimulated and tonic internalization of metabotropic glutamate receptor 1a in human embryonic kidney 293 cells: agonist-stimulated endocytosis is beta-arrestin1 isoform-specific. *Mol. Pharmacol.* **60**, 1243-1253.
- Davies, S. L., Gibbons, C. E., Vizard, T. and Ward, D. T. (2006). Ca²⁺-sensing receptor induces Rho kinase-mediated actin stress fiber assembly and altered cell morphology, but not in response to aromatic amino acids. *Am. J. Physiol.* **290**, C1543-C1551.
- Fong, A. M., Premont, R. T., Richardson, R. M., Yu, Y. R., Lefkowitz, R. J. and Patel, D. D. (2002). Defective lymphocyte chemotaxis in beta-arrestin2- and GRK6-deficient mice. *Proc. Natl. Acad. Sci. USA* **99**, 7478-7483.
- Ge, L., Ly, Y., Hollenberg, M. and DeFea, K. (2003). A beta-arrestin-dependent scaffold is associated with prolonged MAPK activation in pseudopodia during protease-activated receptor-2-induced chemotaxis. *J. Biol. Chem.* **278**, 34418-34426.
- Ge, L., Shenoy, S. K., Lefkowitz, R. J. and DeFea, K. (2004). Constitutive protease-activated receptor-2-mediated migration of MDA MB-231 breast cancer cells requires both beta-arrestin-1 and -2. *J. Biol. Chem.* **279**, 55419-55424.
- Giannone, G., Dubin-Thaler, B. J., Dobreiner, H. G., Kieffer, N., Bresnick, A. R. and Sheetz, M. P. (2004). Periodic lamellipodial contractions correlate with rearward actin waves. *Cell* **116**, 431-443.
- Godwin, S. L. and Soltoff, S. P. (1997). Extracellular calcium and platelet-derived growth factor promote receptor-mediated chemotaxis in osteoblasts through different signaling pathways. *J. Biol. Chem.* **272**, 11307-11312.
- Gumienny, T. L., Brugnera, E., Tosello-Trampont, A. C., Kinchen, J. M., Haney, L. B., Nishiwaki, K., Walk, S. F., Nemergut, M. E., Macara, I. G., Francis, R. et al. (2001). CED-12/ELMO, a novel member of the CrkII/Dock180/Rac pathway, is required for phagocytosis and cell migration. *Cell* **107**, 27-41.
- Hofer, A. M. and Brown, E. M. (2003). Extracellular calcium sensing and signalling. *Nat. Rev. Mol. Cell Biol.* **4**, 530-538.
- Kraynov, V. S., Chamberlain, C., Bokoch, G. M., Schwartz, M. A., Slabaugh, S. and Hahn, K. M. (2000). Localized Rac activation dynamics visualized in living cells. *Science* **290**, 333-337.
- Krupnick, J. G., Santini, F., Gagnon, A. W., Keen, J. H. and Benovic, J. L. (1997). Modulation of the arrestin-clathrin interaction in cells. Characterization of beta-arrestin dominant-negative mutants. *J. Biol. Chem.* **272**, 32507-32512.
- Lefkowitz, R. J. and Whalen, E. J. (2004). beta-arrestins: traffic cops of cell signaling. *Curr. Opin. Cell Biol.* **16**, 162-168.
- Lohse, M. J., Benovic, J. L., Codina, J., Caron, M. G. and Lefkowitz, R. J. (1990). beta-Arrestin: a protein that regulates beta-adrenergic receptor function. *Science* **248**, 1547-1550.
- Lorenz, S., Frenzel, R., Paschke, R., Breitwieser, G. E. and Miedlich, S. U. (2007). Functional desensitization of the extracellular calcium-sensing receptor is regulated via distinct mechanisms: role of G protein-coupled receptor kinases, protein kinase c and beta-arrestins. *Endocrinology* **148**, 2398-2404.
- Mukherjee, S., Gurevich, V. V., Jones, J. C., Casanova, J. E., Frank, S. R., Maizels, E. T., Bader, M. F., Kahn, R. A., Palczewski, K., Aktories, K. et al. (2000). The ADP ribosylation factor nucleotide exchange factor ARNO promotes beta-arrestin release necessary for luteinizing hormone/choriogonadotropin receptor desensitization. *Proc. Natl. Acad. Sci. USA* **97**, 5901-5906.
- Olszak, I. T., Poznansky, M. C., Evans, R. H., Olson, D., Kos, C., Pollak, M. R., Brown, E. M. and Scadden, D. T. (2000). Extracellular calcium elicits a chemokinetic response from monocytes in vitro and in vivo. *J. Clin. Invest.* **105**, 1299-1305.
- Pi, M., Oakley, R. H., Gesty-Palmer, D., Cruickshank, R. D., Spurney, R. F., Luttrell, L. M. and Quarles, L. D. (2005). Beta-arrestin- and G protein receptor kinase-mediated calcium-sensing receptor desensitization. *Mol. Endocrinol.* **19**, 1078-1087.
- Ridley, A. J., Schwartz, M. A., Burridge, K., Firtel, R. A., Ginsberg, M. H., Borisy, G., Parsons, J. T. and Horwitz, A. R. (2003). Cell migration: integrating signals from front to back. *Science* **302**, 1704-1709.
- Ruat, M., Molliver, M. E., Snowman, A. M. and Snyder, S. H. (1995). Calcium sensing receptor: molecular cloning in rat and localization to nerve terminals. *Proc. Natl. Acad. Sci. USA* **92**, 3161-3165.
- Santy, L. C. and Casanova, J. E. (2001). Activation of ARF6 by ARNO stimulates epithelial cell migration through downstream activation of both Rac1 and phospholipase D. *J. Cell Biol.* **154**, 599-610.
- Santy, L. C., Ravichandran, K. S. and Casanova, J. E. (2005). The DOCK180/Elmo complex couples ARNO-mediated Arf6 activation to the downstream activation of Rac1. *Curr. Biol.* **15**, 1749-1754.
- Scott, M. G., Pierotti, V., Storez, H., Lindberg, E., Thuret, A., Muntaner, O., Labbe-Jullie, C., Pitcher, J. A. and Marullo, S. (2006). Cooperative regulation of extracellular signal-regulated kinase activation and cell shape change by filamin A and {beta}-arrestins. *Mol. Cell Biol.* **26**, 3432-3445.
- Small, J. V., Stradal, T., Vignal, E. and Rottner, K. (2002). The lamellipodium: where motility begins. *Trends Cell Biol.* **12**, 112-120.
- Sun, Y., Cheng, Z., Ma, L. and Pei, G. (2002). Beta-arrestin2 is critically involved in CXCR4-mediated chemotaxis, and this is mediated by the enhancement of p38 MAPK activation. *J. Biol. Chem.* **277**, 49212-49219.
- Venkateswarlu, K., Oatey, P. B., Tavaré, J. M. and Cullen, P. J. (1998). Insulin-dependent translocation of ARNO to the plasma membrane of adipocytes requires phosphatidylinositol 3-kinase. *Curr. Biol.* **8**, 463-466.
- Walker, J. K., Fong, A. M., Lawson, B. L., Savov, J. D., Patel, D. D., Schwartz, D. A. and Lefkowitz, R. J. (2003). Beta-arrestin-2 regulates the development of allergic asthma. *J. Clin. Invest.* **112**, 566-574.
- Yudowski, G. A., Puthenveedu, M. A. and von Zastrow, M. (2006). Distinct modes of regulated receptor insertion to the somatodendritic plasma membrane. *Nat. Neurosci.* **9**, 622-627.