

# Plectin scaffolds recruit energy-controlling AMP-activated protein kinase (AMPK) in differentiated myofibres

Martin Gregor<sup>1,\*</sup>, Aniko Zeöld<sup>1,\*</sup>, Susanne Oehler<sup>1</sup>, Kerstin Andrä Marobela<sup>1</sup>, Peter Fuchs<sup>1</sup>, Günter Weigel<sup>2</sup>, D. Graham Hardie<sup>3</sup> and Gerhard Wiche<sup>1,‡</sup>

<sup>1</sup>Department of Molecular Cell Biology, Max F. Perutz Laboratories, University of Vienna, A-1030 Vienna, Austria

<sup>2</sup>Department of Cardiothoracic Surgery, Medical University of Vienna, A-1090 Vienna, Austria

<sup>3</sup>Division of Molecular Physiology, Wellcome Trust Biocentre, University of Dundee, Dundee, DD1 5EH, UK

\*These authors contributed equally to this work

‡Author for correspondence (e-mail: gerhard.wiche@univie.ac.at)

Accepted 17 January 2006

Journal of Cell Science 119, 1864–1875 Published by The Company of Biologists 2006  
doi:10.1242/jcs.02891

## Summary

Plectin, a cytolinker protein greater than 500 kDa in size, has an important role as a mechanical stabiliser of cells. It interlinks the various cytoskeletal filament systems and anchors intermediate filaments to peripheral junctional complexes. In addition, there is increasing evidence that plectin acts as a scaffolding platform that controls the spatial and temporal localisation and interaction of signaling proteins. In this study we show that, in differentiated mouse myotubes, plectin binds to the regulatory  $\gamma 1$  subunit of AMP-activated protein kinase (AMPK), the key regulatory enzyme of energy homeostasis. No interaction was observed in undifferentiated myoblasts, and plectin-deficient myotubes showed altered positioning of  $\gamma 1$ -AMPK. In addition we found that plectin affects the subunit composition of AMPK, because isoform  $\alpha 1$  of the catalytic subunit decreased in proportion to isoform  $\alpha 2$

during in vitro differentiation of plectin<sup>-/-</sup> myotubes. In plectin-deficient myocytes we could also detect a higher level of activated (Thr172-phosphorylated) AMPK, compared with wild-type cells. Our data suggest a differentiation-dependent association of plectin with AMPK, where plectin selectively stabilises  $\alpha 1$ - $\gamma 1$  AMPK complexes by binding to the  $\gamma 1$  regulatory subunit. The distinct plectin expression patterns in different fibre types combined with its involvement in the regulation of isoform compositions of AMPK complexes could provide a mechanism whereby cytoarchitecture influences energy homeostasis.

Key words: Cytoskeleton, Cytolinker proteins, AMPK regulation, Myoblast differentiation, Z-lines

## Introduction

The cytoskeleton determines the shape of cells, regulates cell movement and organises the cell interior, such as the compartmentalisation of intracellular signaling cascades (Janmey, 1998). Plectin, a versatile component of the cytoskeleton, is likely to have an important role in this scenario (for a review, see Wiche, 1998). The indispensability of plectin for muscle cell integrity became evident from the phenotypic analyses of plectin-deficient mice and the symptoms of EBS-MD patients suffering from skin blistering combined with muscular dystrophy (Andrä et al., 1997; Gache et al., 1996; McLean et al., 1996; Smith et al., 1996). Recent studies suggest that plectin acts as a scaffolding platform, determining the intracellular localisation and interaction of signaling proteins, thereby regulating the strength and speed of localised signaling events. In fact, a function of plectin in actin filament dynamics and an involvement of the protein in protein kinase C and FER kinase signaling cascades have been reported (Andrä et al., 1998; Lunter and Wiche, 2002; Osmanagic-Myers and Wiche, 2004). In a recent screening of a cDNA library in the yeast two-hybrid system, we identified the  $\gamma 1$  subunit protein of AMP-activated protein kinase (AMPK), the key regulatory enzyme

of energy homeostasis, as a new interaction partner of plectin. This is in line with a report by Larson et al. (Larson et al., 2002) showing naringin-sensitive phosphorylation of plectin in hepatocytes. Since the most important function of skeletal muscle is to convert chemical energy into physical movement, these findings raised our interest and prompted the present study.

The SNF1/AMPK cascade acts as a metabolic sensor or 'fuel gauge' of the cell (Carling, 2004; Hardie and Carling, 1997; Hardie et al., 1998; Hardie et al., 2003; Sanz, 2003; Stapleton et al., 1996). This ancient signaling circuit evolved at least a billion years ago, before the divergence of animals, plants and fungi, and has a wide spectrum of beneficial effects on metabolic homeostasis (Hardie and Carling, 1997; Hardie et al., 1998; Hardie et al., 1999; Merrill et al., 1997; Mu et al., 2001; Ponticos et al., 1998; Stapleton et al., 1996; Velasco et al., 1997; Winder, 2001). AMPK is a heterotrimeric protein, consisting of the regulatory  $\gamma$  subunit, the  $\alpha$  subunit with the kinase domain, and the  $\beta$  subunit, which acts as a scaffold for the two other subunits (Hardie and Carling, 1997; Hardie et al., 1998). Homologues of all three subunits have been identified in mammals, fruitfly (*Drosophila melanogaster*), worm

(*Caenorhabditis elegans*), yeast (*Saccharomyces cerevisiae*), plants (*Arabidopsis thaliana*) and the primitive protozoan *Giardia lamblia*, a degree of conservation that suggests that formation of the heterotrimeric complex is essential for functional kinase activity (Carling, 2004; Hardie et al., 2003). In mammals, each subunit is encoded by two or three genes ( $\alpha 1$ ,  $\alpha 2$ ,  $\beta 1$ ,  $\beta 2$ ,  $\gamma 1$ ,  $\gamma 2$ ,  $\gamma 3$ ). It seems that formation of the heterotrimeric complex is an essential requirement for at least some of the functions of the kinase (Carling, 2004). Differences in the tissue distribution of isoforms (Stapleton et al., 1997; Thornton et al., 1998; Turnley et al., 1999) and muscle fibre type-specific expression patterns (Chen et al., 1999; Durante et al., 2002; Mahlapuu et al., 2004; Winder et al., 2003) have been reported.

A current model for AMPK activation by AMP proposes that AMP binds to the interface between the  $\alpha$  and  $\gamma$  subunits (Hardie and Hawley, 2001; Hawley et al., 1995) whereas the CBS domains of the AMPK  $\gamma$  subunit appear to form the AMP binding sites (Adams et al., 2004; Kemp, 2004; Scott et al., 2004). AMP binding in turn promotes phosphorylation at Thr172 of its  $\alpha$  subunit (Thr172-P) by an upstream kinase (AMPKK), leading to the activation of the kinase (Woods et al., 2003). The molecular identity of this upstream kinase has only recently been revealed, when it was shown that the tumour suppressor LKB1, in a complex with STRAD and MO25, activates AMPK via Thr172 phosphorylation (Hawley et al., 2003). The two different catalytic domains,  $\alpha 1$  and  $\alpha 2$ , exhibit subtly different substrate preferences, suggesting that they have different physiological roles within the cell (Woods et al., 1996b). Although the primary sequences surrounding Thr172 are perfectly conserved between the two catalytic subunit isoforms (Stapleton et al., 1996), the possibility remains that their regulation by phosphorylation is different (Stein et al., 2000). In contrast to 90% amino acid identity within the catalytic cores of the  $\alpha 1$  and  $\alpha 2$  isoforms, there is only 61% identity outside these core domains (Stapleton et al., 1996). Interestingly, the degree of activation by AMP has been found to depend on the particular  $\alpha$  and  $\gamma$  isoforms present in the complex (Cheung et al., 2000). In particular, it was found that

complexes containing the  $\alpha 2$  and  $\gamma 2$  subunit isoforms were stimulated to a greater extent by AMP than those containing  $\alpha 1$  and/or  $\gamma 2$  (Cheung et al., 2000; Salt et al., 1998).

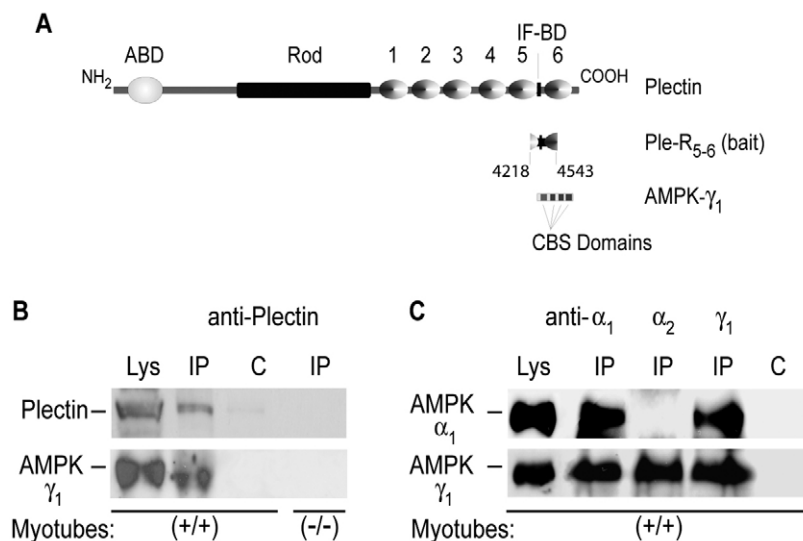
Here we report binding of plectin to the regulatory  $\gamma 1$  subunit of AMPK. As shown in cultured myocytes isolated from mice, this binding occurred in a differentiation-dependent manner, indicating a scaffolding function of plectin for AMPK in differentiated myotubes. Interestingly, in plectin-deficient myocytes we found a gradual decrease of AMPK catalytic subunit isoform  $\alpha 1$  levels over the course of differentiation. Additionally, the levels of activated (Thr172-P) AMPK were elevated in plectin<sup>-/-</sup> myotubes compared with their wild-type counterparts. Our findings suggest a novel role of plectin as a regulator of AMPK implying a mechanism where cytoarchitecture interacts with cellular energy homeostasis.

## Results

### AMPK $\gamma 1$ subunit interacts with plectin

In a previous study, a C-terminal fragment of plectin comprising the intermediate filament-binding domain flanked by the repeat domains 5 and 6 (Ple-R 5-6, see Fig. 1A) was used as a bait for screening a 19-day-old mouse embryonic cDNA library in the yeast two-hybrid system (Osmanagic-Myers and Wiche, 2004). One of the positive clones identified contained the full-length cDNA of the AMPK regulatory subunit  $\gamma 1$ . Among the three  $\gamma$  isoforms, which are encoded by different genes,  $\gamma 1$  (331 amino acid residues) lacks the long N-terminal domains present in  $\gamma 2$  (569) and  $\gamma 3$  (492) (Cheung et al., 2000). All of these subunits can form heterotrimeric complexes with catalytic  $\alpha$  and regulatory  $\beta$  subunits.

To confirm AMPK  $\gamma 1$ -subunit-plectin binding using an alternative method, co-immunoprecipitation (Co-IP) experiments were performed. When plectin was immunoprecipitated from lysates of differentiated mouse myoblasts, the AMPK  $\gamma 1$  subunit was indeed found to be part of the immunocomplexes (Fig. 1B). A similar Co-IP experiment performed with lysates from a plectin-deficient myoblast cell line (derived from plectin- and p53-deficient double-knockout mice) demonstrated the specificity of this



**Fig. 1.** Interaction of AMPK  $\gamma 1$  subunit with plectin.

(A) Schematic representation showing the domain structure of plectin and the fragment (ple-R5-6; I4218-G4543; GenBank accession number AY480038) used as bait in the yeast two-hybrid screening (Osmanagic-Myers and Wiche, 2004). The actin- and IF-binding domains (ABD, IFBD), the rod and C-terminal repeat domains 1-6 of plectin are indicated. The isolated AMPK  $\gamma 1$  subunit clone contained the entire coding sequence comprising four CBS domains. (B) Plectin was immunoprecipitated from lysates of wild-type (+/+) myotubes using anti-plectin antiserum. Lysates (Lys) and immunoprecipitates (IP) were analysed by immunoblotting using antibodies immunoreactive with AMPK  $\gamma 1$  subunit and plectin. Note Co-IP of AMPK  $\gamma 1$ , and absence of signal in control sample (C) run without precipitating antibodies and in sample from plectin-deficient myocytes (-/-). (C) Immunoprecipitation of  $\alpha 1$ ,  $\alpha 2$ , and  $\gamma 1$  AMPK subunits from lysates of differentiated wild-type myocytes (myotubes) using indicated antibodies, and detection of cosedimenting  $\alpha 1$  and  $\gamma 1$  AMPK subunits by immunoblotting.

assay, as in this case neither plectin nor the AMPK  $\gamma 1$  subunit were detectable in the IP fraction (Fig. 1B, lane  $-/-$ ). Co-IP experiments using antibodies to individual AMPK subunits also showed that AMPK  $\gamma 1$  subunits formed heterocomplexes not only with  $\alpha 1$ , but also with  $\alpha 2$  subunits, confirming the formation of distinct AMPK heterotrimers in differentiated myotubes (Fig. 1C).

#### Relocation of overexpressed $\gamma 1$ AMPK in the absence of plectin

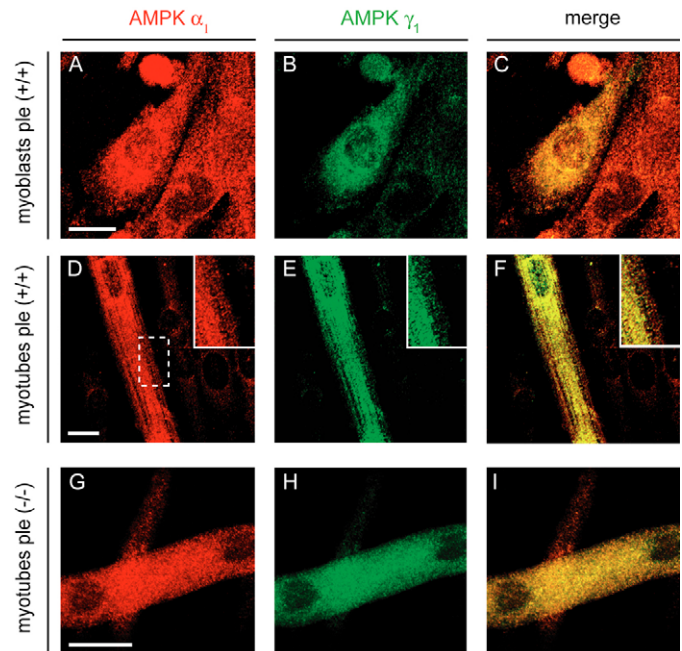
To study the localisation of the AMPK  $\gamma 1$  subunit in living cells we C-terminally fused its open reading frame to that of the green fluorescent protein or the Flag-epitope, and inserted these fusion constructs into retroviral expression plasmids (pBabepuro) (Morgenstern and Land, 1990). Such plasmids were transfected into packaging cells and retroviral particles (harvested 48 hours after transfection) were directly used to infect mouse myoblasts, which were then subjected to differentiation.

To confirm that GFP- $\gamma 1$  fusion proteins became integrated into the native AMPK complexes of cells, infected myoblasts and multinucleated myotubes derived from them after 6 days of differentiation were subjected to immunofluorescence microscopy using anti-AMPK subunit  $\alpha 1$  antibodies (Fig. 2A-F). In myoblasts the ectopically expressed  $\gamma 1$ -GFP fusion protein showed a punctuated and in part diffuse intracellular distribution, similar to the staining pattern of endogenous AMPK subunit  $\alpha 1$  (Fig. 2A-C). In partially differentiated myotubes, both the  $\gamma 1$ -GFP fusion protein and endogenous  $\alpha 1$  appeared to be arranged in a filamentous pattern along the multinucleated tubes, revealing a cross-striated staining pattern in submembrane regions of the fibres (Fig. 2D-F). These data demonstrated that the GFP- $\gamma 1$  subunit indeed colocalised with the  $\alpha 1$  subunit in differentiated myotube cultures.

The plectin-deficient myoblast cell line derived from plectin $^{-/-}$  and p53 $^{-/-}$  double-knockout mice was also used to examine whether plectin had an influence on the subcellular distribution of AMPK. In their undifferentiated state these cells revealed staining patterns of ectopically expressed  $\gamma 1$ -GFP and of endogenous  $\alpha 1$  subunits that were very similar to those of the wild-type cells shown in Fig. 2A (data not shown). However, contrary to wild-type cells, no filamentous and/or striated intracellular alignment of the AMPK subunits was observed in differentiated plectin-deficient myotubes (Fig. 2G-I). Instead, the  $\gamma 1$ -GFP fusion protein was diffusely distributed within the cell body. This showed that the proper positioning of AMPK subunits in differentiated myotubes was dependent on plectin.

#### Plectin-AMPK-complex formation is differentiation- and subunit-dependent

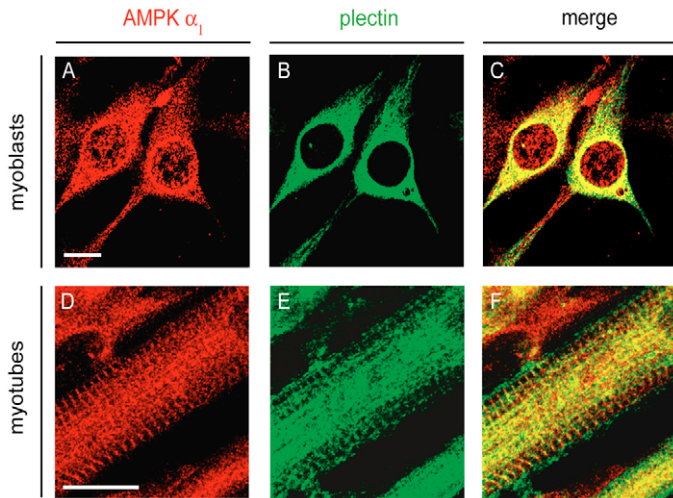
To visualise AMPK complexes and plectin in their physiological context without ectopic overexpression, myocytes at distinct stages of differentiation were double immunolabelled using antibodies to the AMPK complex and to plectin. Antibodies to the  $\alpha 1$  subunit of AMPK turned out to be suited best to this type of experiment, and because the  $\gamma 1$  and  $\alpha 1$  subunits codistributed at all stages of myocyte differentiation (see Fig. 2, Fig. 1C), monitoring the  $\alpha 1$  subunit was considered indicative of the whole AMPK complex. Although in undifferentiated myoblasts both plectin and



**Fig. 2.** Colocalisation of ectopically expressed GFP-AMPK  $\gamma 1$  subunit fusion protein with endogenous AMPK  $\alpha 1$  subunit in wild-type (ple  $+/+$ ) myocytes (A-F) and dislocation of AMPK in plectin-deficient (ple  $-/-$ ) myotubes (G-I). Wild-type or plectin-deficient mouse myoblasts transfected with expression plasmids encoding a GFP- $\gamma 1$  subunit fusion protein were subjected to immunofluorescence microscopy either in their undifferentiated state (A-C), or after differentiation for 4 days (D-I), using antibodies to the  $\alpha 1$  subunit of AMPK (A,D,G); the GFP- $\gamma 1$  fusion protein was visualised directly (B,E,H). Note, colocalisation of the two AMPK subunits in wild-type cells (C,F), indicating that the overexpressed  $\gamma 1$ -subunit became integrated into the native AMPK complex. In wild-type myocytes differentiated for 4 days, AMPK showed a filamentous arrangement (D-F) with a striated appearance in subsarcolemmal regions (see boxed area magnified in insert). In plectin $^{-/-}$  myotubes, expressing GFP-AMPK  $\gamma 1$  subunit fusion protein, the regular arrangement of AMPK (as seen in wild-type myotubes) is lost (G-I). Both, the overexpressed GFP- $\gamma 1$  subunit fusion protein (H) and the endogenous AMPK  $\alpha 1$  subunit (G) showed a more diffuse staining pattern compared with wild-type cells. Bars, 10  $\mu$ m.

AMPK revealed a strong signal in the perinuclear region, there was hardly any codistribution observed in the cytoplasmic region (Fig. 3A-C). However, as soon as the cells reached multinucleated stages, prominent colocalisation of plectin and AMPK became apparent in a cross-striated pattern (Fig. 3D-F). These results were confirmed by immunofluorescence microscopy of frozen tissue sections of skeletal muscle from mouse. As shown below (Fig. 5A-E), plectin and AMPK complexes both generated a cross-striated staining pattern of skeletal muscle fibres, suggesting that plectin, a well-established constituent of Z-discs (Reipert et al., 1999; Wiche et al., 1983), has a role in recruiting AMPK complexes to these structures.

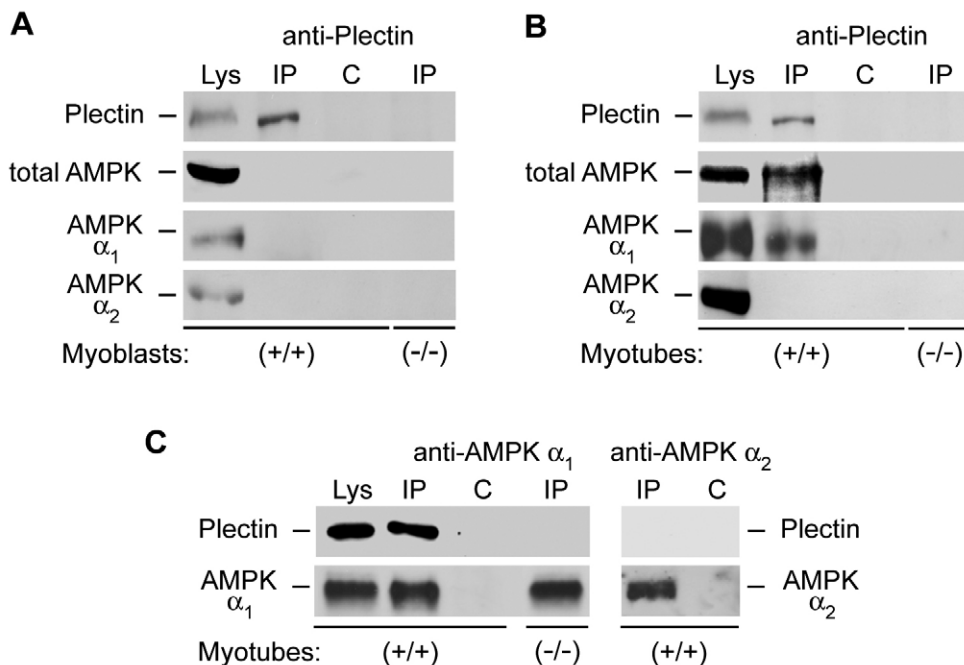
To demonstrate differentiation-dependent plectin-AMPK interaction on the biochemical level, Co-IP experiments were performed using detergent-solubilised cell lysates prepared



**Fig. 3.** Colocalisation of plectin and AMPK in differentiated myotubes in a cross-striated pattern. Double immunofluorescence microscopy, using anti-plectin antiserum #46 and anti-AMPK  $\alpha_1$  subunit antibodies, revealed distinct staining patterns in myoblasts (A-C). The staining patterns of AMPK (A) and plectin (B) were punctuated and filamentous, respectively, showing no colocalisation in distant cytoplasmic regions of myoblasts (C). By contrast, in differentiated myotubes (D-F) and on longitudinal sections of mouse skeletal muscle fibres (see Fig. 5), plectin and AMPK  $\alpha_1$  showed extensive colocalisation, both in overlapping cross-striated patterns (F). Bars, 10  $\mu$ m.

from undifferentiated and differentiated myocytes. Association of AMPK subunits with immunoprecipitated plectin was assessed by immunoblotting using antibodies to  $\alpha_1$  and  $\alpha_2$  AMPK subunits as a mixture, or individually. Since  $\alpha$  subunits occur in the cell only in their heterotrimeric form (unpublished data), it could be assumed that the entire AMPK complex was pulled down. As shown using the antibody mixture (Fig. 4A,B), AMPK complexes co-precipitated with plectin only from differentiated myotubes, whereas they were absent from precipitates obtained from undifferentiated myoblasts. Thus this analysis correlated well with the immunolocalisation data. Interestingly, however, when immunoblotting was performed using antibodies to AMPK  $\alpha_1$  and  $\alpha_2$  subunits individually, it was revealed that only AMPK  $\alpha_1$  and not  $\alpha_2$  subunits co-precipitated with plectin (Fig. 4B). Complex formation of plectin specifically with the AMPK subunit  $\alpha_1$  was confirmed by the reverse Co-IP experiment, where cosedimentation of plectin with immunoprecipitated AMPK subunit  $\alpha_1$ , but not with  $\alpha_2$ , was observed (Fig. 4C). These data strongly suggested that AMPK-plectin complex formation was not only differentiation-dependent but also subunit-dependent.

To confirm these data, we analysed skeletal muscle fibres from conditional muscle-specific plectin-knockout mice, generated by crossing mice carrying a *floxed* plectin gene with transgenic mice expressing Cre recombinase under the control of the muscle-specific creatine kinase promoter (MCK-Cre deleter mice). Tissue-specific disruption of the plectin gene



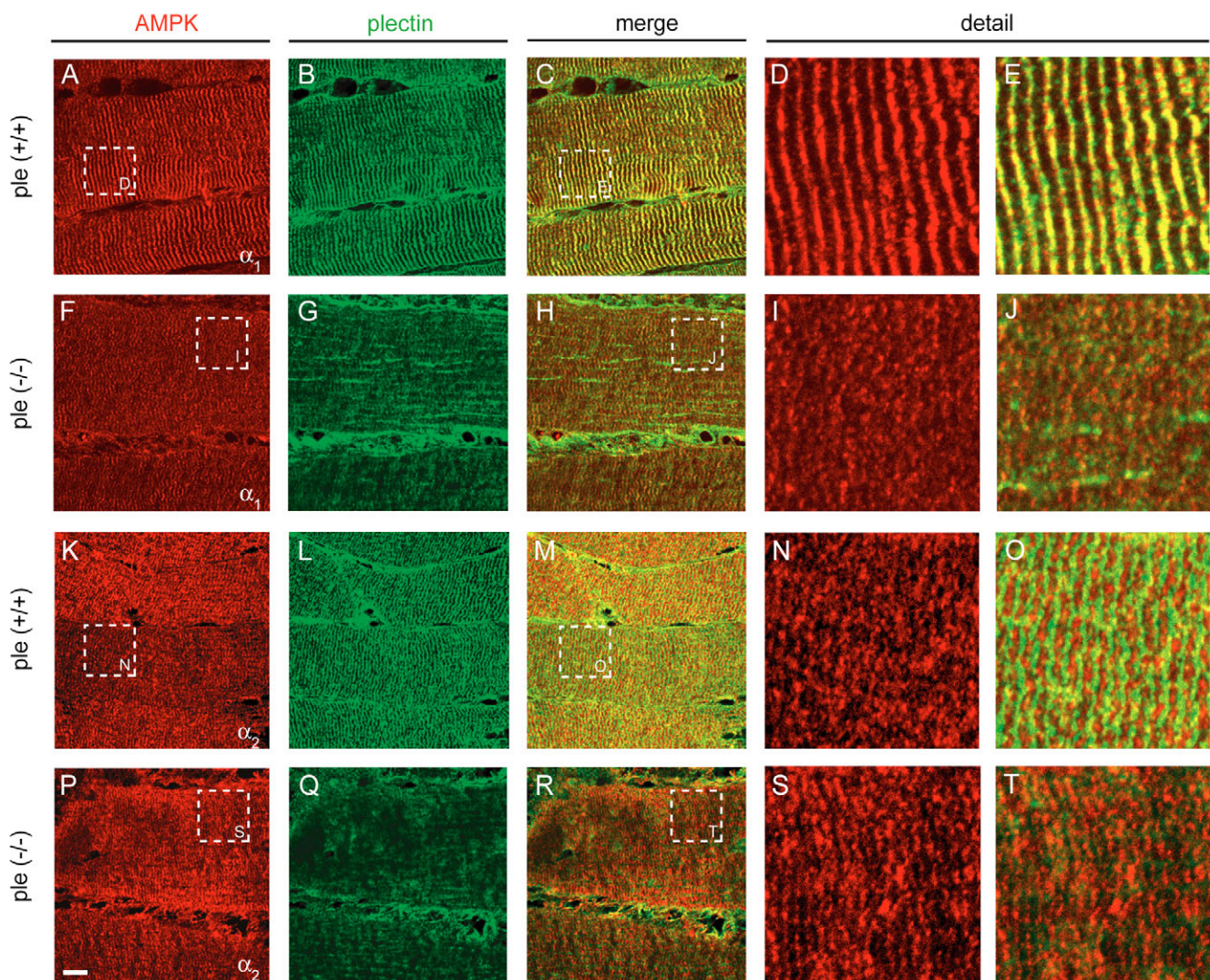
**Fig. 4.** Differentiation-dependent and subunit-dependent interaction of plectin with AMPK. (A,B) Lysates prepared from wild-type (+/+) and plectin deficient (–/–) undifferentiated myoblasts (A), or differentiated (6 days) myotubes (B) were incubated with antiserum #46 to plectin (IP), or without antibodies (C) for 3 hours. Immunocomplexes formed were isolated using protein G beads, separated by 10% SDS-PAGE and subjected to immunoblotting using antiserum to plectin, a 1:1 mixture of antibodies to the  $\alpha_1$  and  $\alpha_2$  subunits of AMPK (total AMPK), or antibodies recognising AMPK  $\alpha_1$  or  $\alpha_2$  subunits individually. AMPK  $\alpha_1$  was co-precipitated with plectin only from lysates prepared from differentiated myotubes; AMPK  $\alpha_2$  did not co-precipitate with plectin at any stage. (C) Lysates prepared from myotubes as in B were incubated with antibodies to AMPK  $\alpha_1$  or  $\alpha_2$  and immunoprecipitates were analysed by immunoblotting using the antibodies indicated. Lys, immunoblots of lysates.

resulted in up to 100% loss of the protein in mature skeletal muscle fibres, such as m. soleus (data not shown; details of the generation and genotypic characterisation of these mice will be published elsewhere). Such mice have the advantage over plectin<sup>-/-</sup> mice to be long-lived, providing an animal model in which the effects of plectin deficiency on muscle tissues can be studied at all stages of development. When cryosections of m. soleus from adult control wild-type mice were subjected to immunofluorescence microscopy, the staining pattern of AMPK  $\alpha$ 1 showed a high degree of overlap with that of plectin, as was particularly evident along Z-discs (Fig. 5A-E). In muscle fibres of corresponding plectin<sup>-/-</sup> mice, the staining intensity of AMPK  $\alpha$ 1 was much lower, and the striated staining pattern was considerably deteriorated in comparison to wild-type fibres (Fig. 5F-J). In marked contrast to AMPK

$\alpha$ 1, AMPK  $\alpha$ 2 did not colocalise with plectin at Z-discs in wild-type muscle fibres. In fact both staining patterns were striated, but mutually exclusive (Fig. 5K-O). Moreover, the staining pattern of AMPK  $\alpha$ 2 remained largely unaffected in the absence of plectin (Fig. 5P-T). These data were fully consistent with the Co-IP experiments, showing that only AMPK heterotrimers comprising  $\alpha$ 1 but not  $\alpha$ 2 subunits bind to plectin in differentiated myotubes (see Fig. 4).

#### Absence of plectin alters $\alpha$ subunit composition of AMPK complexes in differentiated myotubes

The two catalytic subunits of AMPK,  $\alpha$ 1 and  $\alpha$ 2, expressed in skeletal muscle tissue, were reported to have distinct physiological functions (Cheung et al., 2000; Thornton et al., 1998; Viollet et al., 2003). Furthermore, compensatory



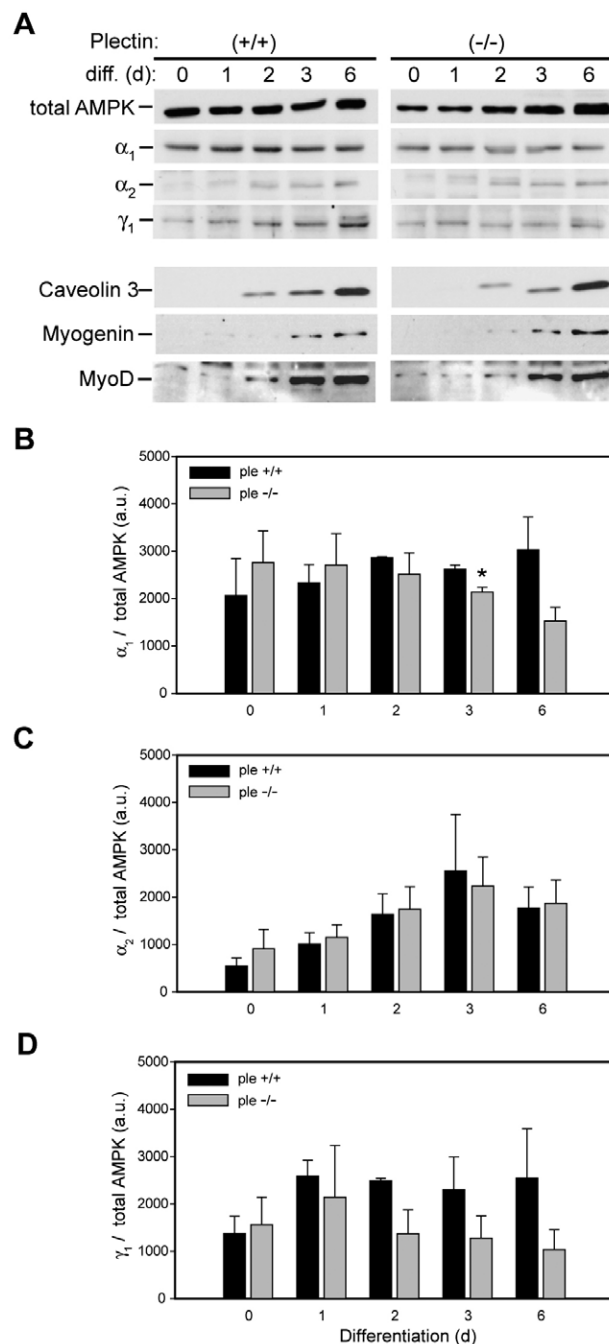
**Fig. 5.** Plectin deficiency alters the staining pattern of AMPK catalytic subunits  $\alpha$ 1 in skeletal muscle fibres. Frozen tissue sections of m. soleus isolated from 3-month-old wild-type (A-E, K-O; ple +/+) and muscle-specific plectin knockout (F-J, P-T; ple -/-) mice were immunolabelled using antibodies to AMPK  $\alpha$ 1 (A, F) and  $\alpha$ 2 (K, P) subunits, and plectin (B, G, L, Q). Note that plectin-specific staining in knockout tissue is restricted to connective tissue and blood vessels; only AMPK  $\alpha$ 1, but not  $\alpha$ 2, displayed extensive colocalisation with plectin (compare magnified boxed areas E and O); and fibres without plectin showed reduced AMPK  $\alpha$ 1 staining, and the striated staining pattern of the  $\alpha$ 1, rather than the  $\alpha$ 2 AMPK subunit was considerably deteriorated compared with wild-type (magnified boxed areas D, I and N, S, respectively). Bar, 10  $\mu$ m.

changes in expression levels of  $\alpha$  subunits have been described in AMPK  $\alpha 2$  knockout mice (Viollet et al., 2003). To investigate whether plectin-AMPK interaction in muscle cells has any functional significance, in particular for the  $\alpha$  isoform composition of AMPK and to assess whether the observed changes in the spatial organisation of AMPK in the absence of plectin are reflected in subunit composition of AMPK complexes, we performed immunofluorescence microscopy and immunoblotting analyses of plectin<sup>+/+</sup> and plectin<sup>-/-</sup> myoblasts, before and during differentiation to myotubes, using antibodies specific for subunits  $\alpha 1$  and  $\alpha 2$ , and  $\gamma 1$ . Interestingly, immunofluorescence microscopy showed that in undifferentiated myoblasts from either type of myocytes hardly any significant signal was obtained using anti- $\alpha 2$  subunit-specific antibodies, whereas the  $\alpha 1$  subunit was found to be expressed in both types of myoblasts and throughout myotube differentiation. However, at later stages of differentiation,  $\alpha 2$  subunits could also be detected in both cell types (data not shown). When individual subunit expression levels (corresponding to  $\alpha 1$ ,  $\alpha 2$  and  $\gamma 1$ ) were quantified by immunoblotting of cell lysates at different time points of differentiation and normalised against total AMPK, levels of  $\alpha 1$  and  $\gamma 1$  subunits in plectin<sup>-/-</sup> myotubes gradually decreased, whereas in wild-type cells their expression levels remained unchanged (Fig. 6A,B,D). In agreement with immunofluorescence microscopy data (not shown),  $\alpha 2$  subunit expression levels showed an increase during differentiation, without any significant difference between plectin<sup>+/+</sup> and plectin<sup>-/-</sup> myocytes (Fig. 6A,C). To demonstrate the same extent of differentiation in plectin<sup>+/+</sup> and <sup>-/-</sup> myoblasts, the expression levels of three different markers, caveolin 3, myogenin and MyoD, were monitored in parallel. No differences between the two cell types were detectable (Fig. 6A). Taken together, these results clearly indicated plectin-dependent alterations in  $\alpha$  isoform composition of AMPK in the course of myocyte differentiation.

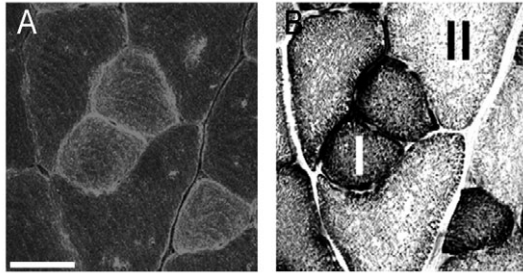
Distinct isoforms of  $\alpha$ ,  $\beta$  and  $\gamma$  AMPK subunits show muscle fibre type-specific expression patterns (Winder et al., 2003). The factors determining these patterns are unknown. Interestingly, similar to the AMPK  $\alpha 1$  subunit (Winder et al., 2003), we found that plectin was more abundantly expressed in mitochondria-rich slow oxidative type I (Fig. 7), compared with glycolytic type II muscle fibres. These data, too, were consistent with a role of plectin in AMPK  $\alpha$  subunit composition in differentiated muscle cells, suggesting that plectin may stabilise  $\alpha 1$ -AMPK complexes.

#### Increased phosphorylation of AMPK in differentiated plectin<sup>-/-</sup> myotubes

AMPK complexes containing the catalytic  $\alpha 2$  subunit were found to be activated to a greater extent by AMP than  $\alpha 1$  complexes (Cheung et al., 2000; Salt et al., 1998). An alteration in the subunit composition of AMPK, as observed in plectin-deficient myotubes, might therefore have been reflected by changes in the activity of the enzyme. Phosphorylation of AMPK on Thr172 of its  $\alpha$  subunit has been shown to correlate with its catalytic activity (Hawley et al., 2003; Stein et al., 2000). Therefore, the levels of activated AMPK in plectin<sup>+/+</sup> and <sup>-/-</sup> myocytes were measured by immunoblotting of cell lysates using antibodies specific to Thr172-P, along with antibodies recognising all  $\alpha$  isoforms irrespective of their

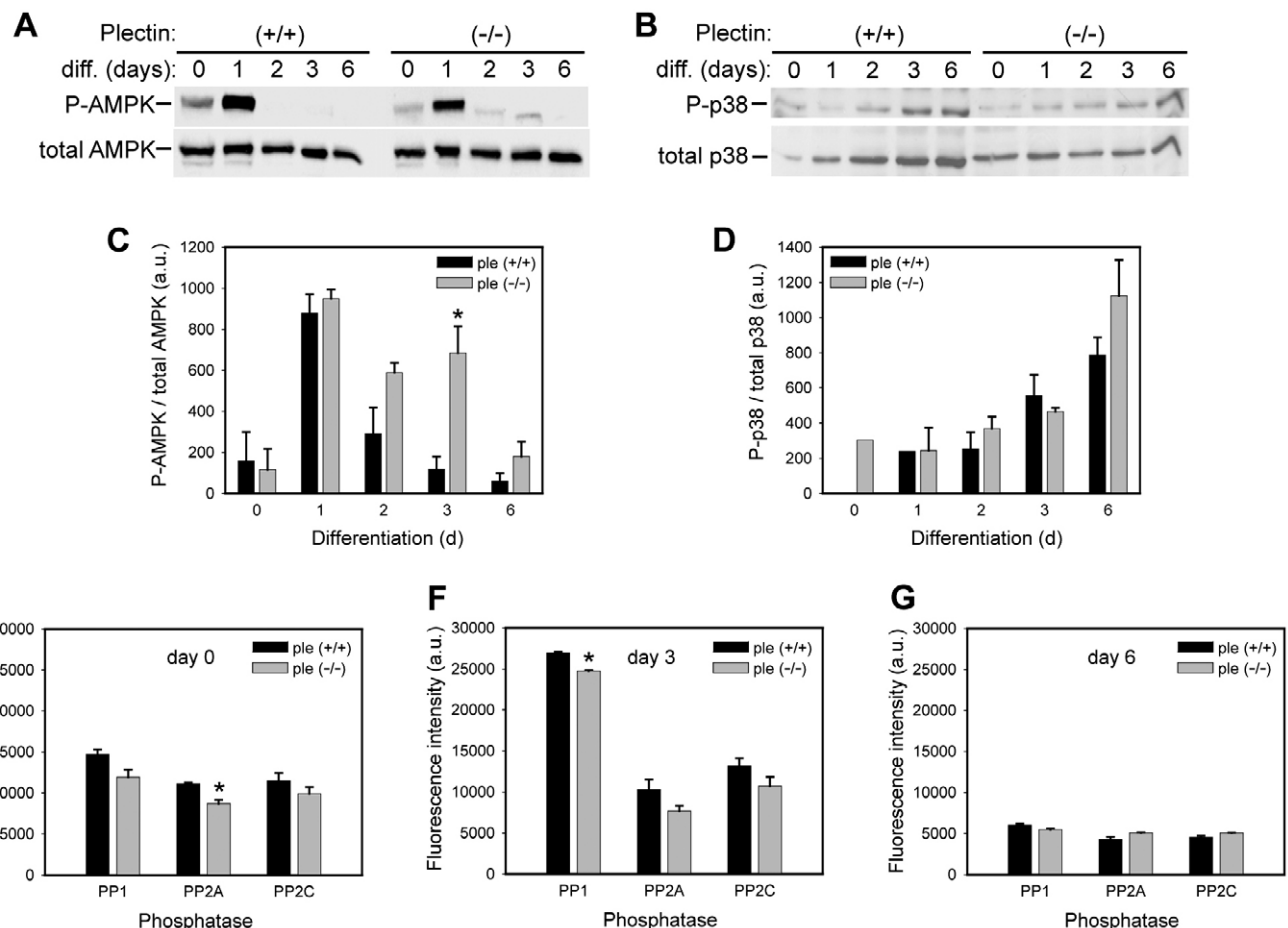


**Fig. 6.** Plectin-deficient myocytes display differentiation-dependent changes in AMPK subunit expression. (A) Total cell lysates, prepared from differentiating wild-type (+/+) and plectin-deficient myocytes (-/-) at the days (d) indicated, were subjected to immunoblotting using AMPK  $\alpha 1$ -,  $\alpha 2$ - and  $\gamma 1$  subunit-specific antisera, as well as antibodies immunoreactive with all AMPK  $\alpha$  subunit isoforms (total AMPK). Equal amounts of proteins were loaded in each lane and protein bands were visualised as described in the text. The extent of differentiation of plectin<sup>+/+</sup> and <sup>-/-</sup> myoblasts was monitored in parallel using antibodies to caveolin 3, myogenin and MyoD. (B-D) Signal intensities of AMPK subunit bands, densitometrically determined in three independent experiments (including that shown in A), were normalised to total AMPK. Error bars represent the s.e.m. of three independent experiments. Differences between values in wild-type (ple +/+) and plectin-deficient (ple -/-) cells were determined using an unpaired Student's *t*-test; \**P* < 0.05.

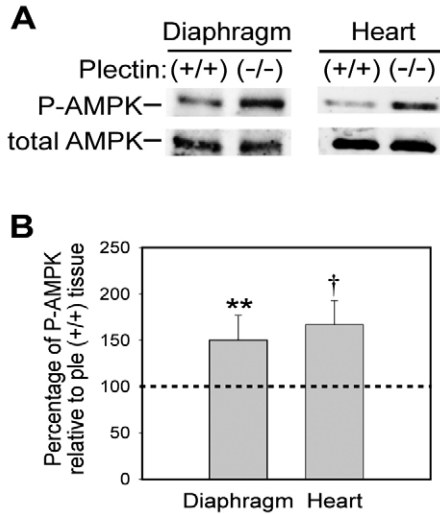


**Fig. 7.** Plectin is predominantly expressed in oxidative skeletal muscle fibres. Immunofluorescence microscopy of frozen sections of rat m. tibialis anterior using mAb 10F6 to plectin and NADH staining, performed on consecutive sections, are shown in (A) and (B), respectively. Note darkly stained mitochondria-rich oxidative type I fibres (I) and lightly stained glycolytic type II fibres (II) in B, and stronger plectin-staining in oxidative type I fibres in A. Bar, 25  $\mu$ m.

phosphorylation state. As shown in Fig. 8A,C, in plectin<sup>+/+</sup> myocytes a burst in the level of Thr172-P AMPK was observed within the first 24 hours of differentiation (day 1), followed by a massive decrease upon further differentiation. Similar to wild-type cells, lysates from plectin<sup>-/-</sup> myocytes also contained a high proportion of Thr172-P AMPK after one day of differentiation. However, the level of activated AMPK decreased thereafter considerably more slowly than in wild-type myocytes, as significantly higher levels of activated AMPK were still detectable on day 3 of differentiation, when cells had already become multinucleated (Fig. 8A,C). These findings were further corroborated by a similar analysis of skeletal muscle (diaphragm) and heart tissue homogenates from newborn wild-type and plectin-knockout mice. Similar to cultured myocytes, the levels of Thr172-P AMPK were found to be increased in the tissues of plectin-deficient mice (Fig. 9A). Quantification of these data and normalisation to the total



**Fig. 8.** Differential activation (phosphorylation) pattern of AMPK in differentiating wild-type (ple +/+) and plectin-deficient (ple -/-) myocytes: specificity and phosphatase independence. (A,B) Total cell lysates of wild-type or plectin-deficient myocytes, differentiated (diff.) for the time periods indicated (0–6 days), were subjected to immunoblotting using antibodies to unphosphorylated/phosphorylated (total) and phosphorylated (P-) forms of AMPK and p38 MAP kinase, respectively. (C,D) Signal intensities of phosphorylated AMPK and p38 MAP kinase protein bands were densitometrically determined in three independent experiments (including those shown in A,B), and normalised to total AMPK and p38 MAP kinase, respectively. Error bars represent the s.e.m. (E–G) Enzymatic activities of phosphatases (PP1, 2A, and 2C) were measured in cell lysates obtained from undifferentiated myoblasts (E), or myoblasts differentiated for 3 (F) or 6 days (G), using a fluorescent substrate. Error bars represent the s.e.m. of three independent experiments. (C–G) Differences between values in ple (+/+) and ple (-/-) were determined using an unpaired Student's *t*-test; \**P*<0.05.



**Fig. 9.** Elevated proportion of Thr172-*P* AMPK in muscle of newborn plectin<sup>-/-</sup> mice. (A) Immunoblot of skeletal muscle (diaphragm) and heart tissue homogenates prepared from plectin<sup>+/+</sup> and plectin<sup>-/-</sup> newborn mice using antibodies to unphosphorylated/phosphorylated (total) and phosphorylated (P-) forms of AMPK. (B) Signal intensities of phosphorylated AMPK protein bands were densitometrically determined in three independent experiments (including that shown in A), and normalised to total AMPK. Error bars represent the s.e.m. of these experiments. Differences between plectin<sup>+/+</sup> and plectin<sup>-/-</sup> values were determined using an unpaired Student's *t*-test; \*\**P*<0.01; †*P*<0.001.

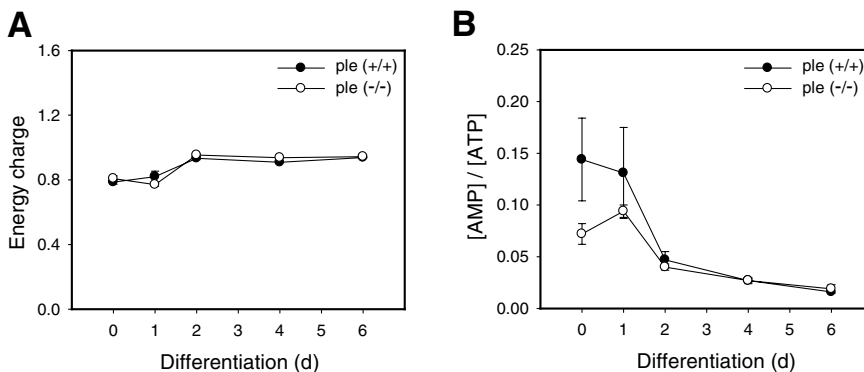
AMPK content of the samples showed a more than twofold greater proportion of Thr172-*P* AMPK in plectin<sup>-/-</sup> compared with wild-type tissues (Fig. 9B).

Three classes of phosphatases, namely PP1, 2A and 2B, were shown to dephosphorylate AMPK (Davies et al., 1995; Samari et al., 2005). To exclude the possibility that the observed increase in AMPK phosphorylation in plectin<sup>-/-</sup> cells resulted from the deregulation of these phosphatases, the activities of PP1, 2A, and 2B were individually evaluated in undifferentiated myoblasts, myoblasts differentiated for 3 days, and fully differentiated (6 days) myotubes (Fig. 8E-G). Although slightly lower activities of all phosphatases tested were measured in lysates from plectin-deficient myoblasts compared with wild-type myoblasts, at least at the first two time points (0 days and 3 days), there was no correlation

between the differential time courses of AMPK activities and the phosphatase activities measured in plectin-deficient and wild-type cells.

To assess the specificity of AMPK activation in plectin-deficient myocytes, we measured the activity of p38 MAP kinase, another kinase related to myoblast differentiation (Baeza-Raja and Munoz-Canoves, 2004; Wu et al., 2000). As shown in Fig. 8B,D, p38 activities of both plectin<sup>+/+</sup> and plectin<sup>-/-</sup> myoblasts gradually increased during differentiation at a similar rate, reaching maxima in fully differentiated myotubes. Only at this stage did plectin<sup>-/-</sup> myoblasts show a slightly higher activity compared with their wild-type counterparts. In any case, the time courses of p38 MAP kinase activation were quite similar in both cell types and thus did not correlate with the different time courses of AMPK phosphorylation observed in these cells. Showing a specific elevation of AMPK activity levels in plectin-deficient myocytes, in all, these data were consistent with the observed shift in AMPK subunit composition from  $\alpha$ 1 to the more readily activated  $\alpha$ 2 subunit.

AMPK has been postulated to have a role as a sensor and regulator of the cellular adenylate nucleotide pool defined as energy charge  $(\text{ATP} + 1/2\text{ADP}) / (\text{ATP} + \text{ADP} + \text{AMP})$  (Atkinson, 1968; Hardie and Hawley, 2001). To examine whether the increased phosphorylation of AMPK observed in plectin<sup>-/-</sup> myocytes correlated with changes in energy charge, we measured the nucleotide contents of plectin<sup>+/+</sup> and <sup>-/-</sup> myocytes at distinct stages of differentiation (Fig. 10). In both cell types energy charge remained within the physiological range and no significant differences were observed (Fig. 10A). The critical physiological parameter controlling AMPK kinase is the intracellular AMP:ATP ratio, with increased AMP and decreased ATP levels leading to phosphorylation and activation of the kinase (Hardie and Carling, 1997). Similar to energy charge, there was no significant difference between plectin<sup>+/+</sup> and <sup>-/-</sup> myocytes regarding this parameter (Fig. 10B). In both cell types the ratio of AMP:ATP was found to be high during the first 24 hours of differentiation and to decrease thereafter. This correlated well with the changes in AMPK Thr172-*P* observed in wild-type cells, but not with those in plectin<sup>-/-</sup> myocytes. Since there were no significant differences observed in the nucleotide ratios of plectin<sup>+/+</sup> and <sup>-/-</sup> cells at later stages of differentiation, we conclude that the higher levels of Thr172-*P* AMPK detected in plectin-deficient myotubes for up to 3 days, and possibly longer (see Fig. 8C), were not due to an altered AMP:ATP ratio.



**Fig. 10.** Cellular energy state. The ATP, ADP and AMP nucleotide pools in lysates of wild-type (ple <sup>+/+</sup>) and plectin-deficient (ple <sup>-/-</sup>) myocytes were determined by HPLC at various stages of differentiation and the corresponding energy charge  $(\text{ATP} + 1/2\text{ADP}) / (\text{ATP} + \text{ADP} + \text{AMP})$  values (A) and the AMP:ATP nucleotide ratios (B) were calculated. Error bars represent the s.e.m. of three independent experiments.

## Discussion

### Plectin as a targeting platform for AMPK in differentiated myotubes

In line with our present finding, a large intracellular pool of plectin has been found associated with the Z-discs of myofibres (Reipert et al., 1999; Wiche et al., 1983). Plectin has been shown to appear at these structures rather early on during muscle differentiation (Schröder et al., 2000). Given the multitude of plectin interaction partners identified to date, the specific localisation of plectin in myofibres might be essential for the spatiotemporally coordinated positioning of specific signaling molecules at the Z-discs. Plectin could regulate the access of specific intracellular substrates to the AMPK complex allowing selective phosphorylation of downstream AMPK target proteins. It could also hold the kinase in the vicinity of its regulatory molecules and its upstream kinase, or within the sphere of influence of the local nucleotide ratio. Plectin might be involved in the selective stabilisation of AMPK complexes composed of distinct isoforms, thereby affecting the physiological function of the kinase.

The proper localisation of AMPK is of utmost importance in muscles, where the kinase cascade allows matching of the rate of ATP production with increased energy requirements during exercise. Adenylate kinase (AK) and creatine phosphokinase (CK) are two enzymes which are responsible for maintaining relatively stable ATP concentrations in the muscle cell as it begins to contract and use ATP at increased rates (Neumann et al., 2003a). AMPK reduces CK activity by approximately 60% (Ponticos et al., 1998), probably to prevent the backward reaction of CK at high creatine levels, leading to the consumption of scarce ATP for resynthesis of phosphocreatine (Neumann et al., 2003b). In this scenario, the improper localisation of AMPK resulting from plectin deficiency could lead to inefficient energy usage. Furthermore, fixing AMPK to a subcellular site, where its regulatory molecules, creatine phosphate (Ponticos et al., 1998) and AMP/ATP (Carling et al., 1989; Hardie and Carling, 1997; Mitchelhill et al., 1994; Sullivan et al., 1994), are locally concentrated, is probably one of the most important primary conditions for the kinase to monitor the energy state of the muscle cell and trigger metabolic processes.

Fleming et al. (Fleming et al., 2005) revealed shear stress-induced phosphorylation of AMPK to be controlled by an unknown signaling pathway. It is conceivable that such a pathway involves regulation based on AMPK-plectin interaction, as plectin and other members of the plakin protein family seem to have a crucial role as stabilising elements of cells against mechanical stress. Plectin-kinase scaffolding might thus represent a prerequisite for the integration of mechanical stimuli with signaling pathways and may have consequences going beyond energy metabolism.

The C-terminal part of plectin, containing six globular repeat domains (R1-R6) connected by flexible linker regions, can interact with various types of intermediate filament (IF) proteins, including epidermal keratins, vimentin, desmin, GFAP, the neurofilament triplet proteins and lamin B (for a review, see Wiche, 1998). The vimentin-binding site has been mapped to the R5-R6 linker region (Nikolic et al., 1996), which probably also serves as an interface to other IF proteins. This domain may also harbour the docking site for RACK1, the receptor for activated C kinase 1 (Osmanagic-Myers and

Wiche, 2004), as well as that for AMPK (this study). Whether these interactions are mutually exclusive or can occur simultaneously remains to be shown.

### The selective stabilisation of AMPK $\alpha$ 1 complexes in myotubes places plectin-AMPK interaction in a physiological context

In mammals, several different isoforms of all three AMPK subunits act to fine-tune the adapted energy homeostasis in distinct cell types (Cheung et al., 2000; Hardie and Hawley, 2001; Salt et al., 1998; Stapleton et al., 1996; Winder et al., 2003; Woods et al., 1996b). Our study, which we believe is the first on AMPK  $\alpha$  subunit expression during in vitro differentiation of myocytes, revealed that co-expression of both catalytic subunit isoforms ( $\alpha$ 1 and  $\alpha$ 2) occurred only at later stages of differentiation. Our immunoprecipitation and immunofluorescence microscopy data imply that plectin tethers exclusively AMPK complexes comprising  $\alpha$ 1 subunit to Z-discs. Together with the finding that cell lysates prepared from plectin<sup>-/-</sup> myocytes contained less  $\alpha$ 1 isoform compared with wild-type controls, these results support a role of plectin in stabilising kinase complexes containing specifically this catalytic isoform. Stabilisation of  $\alpha$  and  $\gamma$  subunits of the kinase has been reported to be carried out by the  $\beta$  subunit of AMPK, increasing the half-life of the kinase approximately twofold (Crute et al., 1998). AMPK  $\beta$  subunits act in a manner similar to the yeast Sip1/Sip2/Gal83 protein family members, which anchor Snf1 (homologue of AMPK  $\alpha$  subunit) and Snf4 (homologue of AMPK  $\gamma$  subunit) into high molecular mass complexes (Hardie et al., 1998). The fine-tuning of the wide palette of AMPK functions in mammalian cells is likely to implicate other proteins serving as anchorage sites. Plectin may selectively stabilise  $\gamma$ 1- $\alpha$ 1 kinase complexes in differentiated myotubes via a conformational change of its binding partner, the  $\gamma$ 1 regulatory subunit. The physiological function of the AMPK holoenzyme depends on the particular isoform present in the complex (Stein et al., 2000; Thornton et al., 1998). Some physiological differences between the  $\alpha$ 1 and  $\alpha$ 2 catalytic subunits, such as  $\alpha$ 2 but not  $\alpha$ 1 being involved in glucose homeostasis (Viollet et al., 2003), correlate with their fibre-type-specific expression patterns. Subunit  $\alpha$ 1 is predominantly expressed in oxidative fibres, whereas  $\alpha$ 2 is more abundantly detected in glycolytic fibres (Winder et al., 2003), suggesting a role of the kinase in the metabolic switch between oxidative and glycolytic pathways. From this point of view the influence of plectin on AMPK subunit composition would infer a role of plectin in the maintenance of cell metabolism.

### How does the altered activity of AMPK in plectin<sup>-/-</sup> myotubes fit into this concept?

Elevated levels of Thr172-P AMPK in plectin<sup>-/-</sup> myotubes could have been explained by an enhanced AMP:ATP ratio in these cells. However, HPLC measurements of the nucleotide contents did not show any significant difference between plectin<sup>-/-</sup> and wild-type control cells, supporting the notion that plectin directly regulates AMPK activity. Since several classes of phosphatases were shown to regulate AMPK in vivo and in vitro (Davies et al., 1995; Samari et al., 2005), increased AMPK activity could have resulted from their general deregulation in plectin-deficient myocytes. Activities of PP1, PP2A and PP2C were indeed slightly lower in plectin<sup>-/-</sup>

myocytes at distinct stages of differentiation. However, the differences were of low significance and they did not correlate with the activation state of AMPK in plectin<sup>-/-</sup> and <sup>+/+</sup> myocytes in the course of differentiation. Moreover, in contrast to AMPK, the phosphorylation levels of p38 MAP kinase, another kinase involved in myoblast differentiation, did not diverge during differentiation of plectin<sup>-/-</sup> and <sup>+/+</sup> cells, again supporting the notion that alterations in phosphatase activity were not responsible for the differences in AMPK activities.

AMPK exists in cells as a heterogeneous pool of isoenzymes, that respond differently to changes in the AMP:ATP ratio (Cheung et al., 2000). It was reported that the AMP dependence of specific complexes depends on the relative stability of the  $\alpha$ - $\gamma$  subunit interactions (Cheung et al., 2000), implying that the AMP dependence of the kinase is controlled by both, the  $\gamma$  and the  $\alpha$  subunit isoforms present in the complex. Since AMP activates the kinase allosterically, the reason for differences in the dependence on this mononucleotide could lie in distinct tertiary structures of the different isoforms associated in the active complex. Interestingly, it has been reported that an engineered mutation in the  $\gamma$ 1 subunit resulted in a constitutively active form of the  $\alpha$ 1 $\beta$ 1 $\gamma$ 1 complex that was less dependent on AMP and more highly phosphorylated, and therefore more active under basal conditions (Hamilton et al., 2001). On the other hand it has been shown that complexes containing  $\alpha$ 2 are activated to a greater extent by AMP than  $\alpha$ 1 complexes (Cheung et al., 2000; Durante et al., 2002; Salt et al., 1998; Stein et al., 2000). This considered, the elevated level of active AMPK detected in plectin-deficient myotubes compared with wild-type control cells, correlated well with other data and probably reflected a shift in AMPK subunit composition towards a higher  $\alpha$ 2 subunit proportion.

In conclusion, we have obtained strong evidence for an interaction of plectin with AMPK and its effects on the activity of the kinase. Some aspects of our concept of the physiological role of this interaction remain speculative and need further investigation. Strikingly, SIK and QSK, two kinases closely related to AMPK were recently shown to interact with the adaptor protein 14-3-3 (Al-Hakim et al., 2005). Similar to our study, the authors concluded that 14-3-3 regulates the catalytic activity and localisation of these kinases. Together with our observations, this suggests that scaffolding might be an evolutionary conserved regulatory mechanism of signaling pathways involving the AMPK kinase protein family. It will be of particular interest to examine the mechanisms by which plectin may determine and modulate the formation and stabilisation of AMPK complexes. In further investigations, new tools such as antibodies specific to distinct AMPK  $\gamma$  isoforms and AMPK subunit-deficient cell lines will be indispensable.

## Materials and Methods

### cDNA constructs and transfection of myoblasts

The cDNA of the AMPK  $\gamma$ 1 subunit isolated in a yeast two-hybrid screening (Osmanagic-Myers and Wiche, 2004) was amplified by PCR and cloned into a pENTR/D-Topo vector (Invitrogen) by directional TOPO cloning. In this system PCR products are directionally cloned by adding four bases to the forward primer. The overhang in the cloning vector invades the 5' end of the PCR product, anneals to the added bases, and stabilises the PCR product in the correct orientation. Topoisomerase I from *Vaccinia* virus (Invitrogen) was used for the formation of covalent bonds between the insert and vector DNAs. Three positive clones were selected and inserts combined with the original AMPK  $\gamma$ 1 subunit sequence to

eliminate mutations. The entry clone (pENTR/D-Topo) with the AMPK  $\gamma$ 1 subunit insert was then mixed with the destination vector (pBabe containing genes of GFP or FLAG fusion proteins) and Gateway LR Clonase enzyme mix (Invitrogen) to generate the expression clone. Expression of the fusion proteins AMPK  $\gamma$ 1-GFP or AMPK  $\gamma$ 1-FLAG was performed using the Phoenix retroviral system. This system has the advantage of stable integration ensuring that in cell types which undergo multiple maturation steps the retrovirus construct will remain resident and continue to express. The day before transfection  $2 \times 10^6$  Phoenix cells were seeded per 6 cm culture dish. Phoenix cells were cultivated in DMEM/high glucose, 10% FCS with penicillin/streptomycin. The cells were transfected with retroviral constructs using Lipofectamine 2000 reagent (Invitrogen) by adding 4  $\mu$ g plasmid DNA and 10  $\mu$ l lipofectamine in 500  $\mu$ l serum-free medium (Optimem). Cells were incubated for 7 hours in transfection medium, then the medium was replaced by fresh antibiotic-free DMEM/FCS. After incubation overnight, medium was removed, 2 ml fresh antibiotic-free medium was added and cells were grown for 30 hours at 32°C. The supernatant containing the infectious retroviral particles was mixed 1:1 with fresh medium, filtered and polybrene (1:1000 dilution of 5 mg/ml stock) was added to enhance viral uptake of target cells. The infection mix was added to myoblasts (see below) subcultivated the day before infection on 6 cm culture dishes. Cells were grown in the infection medium for 48 hours at 37°C.

### Immunofluorescence microscopy of cells and tissues

Skeletal myocytes were isolated, following established procedures (Rando and Blau, 1994), from the hindlimbs of 2- to 3-day-old plectin<sup>-/-</sup> mice (Andrä et al., 1997) and their wild-type littermates, both crossed into a p53<sup>-/-</sup> background (Jacks et al., 1994) to achieve immortalisation of cells. Isolated myoblasts were purified based on  $\alpha$ 7 integrin expression, following a published protocol (Blanco-Bose et al., 2001), and were grown in F-10/DMEM-based myoblast growth medium (Gibco) on collagen-coated culture plates. Differentiation to myotubes was induced by replacement of myoblast growth medium with DMEM supplemented with 5% horse serum. For immunofluorescence microscopy, myoblasts and myotubes adhering to collagen-coated culture dishes were fixed in methanol for 90 seconds at -20°C. BSA (5%) or horse serum (5%) were added to the fixed cells to block non-specific binding sites, and cells were then washed five times for 5 minutes with PBS. As primary antibodies we used sheep antisera to AMPK  $\alpha$ 1 and AMPK  $\alpha$ 2 subunits (Woods et al., 1996a), and rabbit anti-plectin antiserum #46 (Wiche and Baker, 1982); incubations were for 1 hour at room temperature (RT). Dishes were then washed thoroughly with PBS, incubated with secondary antibodies (donkey anti-sheep Cy3, from Chemicon; donkey anti-rabbit Cy5, from Jackson Laboratories) for 1 hour at RT, washed again with PBS, and finally rinsed with water and mounted in mowiol. For viewing cells in the microscope, the rims of the culture dishes were removed.

Unfixed frozen longitudinal or cross sections (7  $\mu$ m-thin) of skeletal muscle tissues were prepared from mouse or rat (specified in the text) and placed on coverslips. Samples from mouse were incubated (1 hour, at RT) with normal goat serum (1:30 in PBS) before incubation with primary antibodies. Immunoreagents and processing of specimens for microscopy were similar to those of cells, except that in the case of rat tissue mouse mAb 10F6 to plectin (Foisner et al., 1994) and anti-mouse-TR (Jackson Laboratories) were used as primary and secondary antibodies, respectively. All immunolabelled specimens were visualised using an Axiovert 100M laser-scanning microscope (Zeiss).

### Enzyme histochemical staining of muscle fibres

For detection of type I and type II muscle fibres on unfixed frozen sections of skeletal muscle we used NADH-tetrazolium reductase staining. Specimens were incubated in 0.2 M Tris-HCl, pH 7.4, containing 1.5 mM NADH and 1.5 mM nitro blue tetrazolium, for 30 minutes at 37°C. Afterwards superfluous staining was removed by washing with 30, 60, 90, 60 and 30% acetone (2 minutes, each step). Finally slides were rinsed in water and mounted in Entellan.

### Phosphatase activity measurement

Cultured myocytes were differentiated for the times indicated in the text and then collected and homogenised in 1 ml of 50 mM imidazole, 0.2 mM EGTA, 0.02%  $\beta$ -mercaptoethanol, 1% Triton X-100, 2 mM PMSF, 20  $\mu$ g/ml aprotinin and 12.5  $\mu$ g/ml leupeptin. Lysates were centrifuged for 1 hour at 100,000 *g* and subjected to phosphatase activity measurements using EnzChek<sup>®</sup> phosphatase assay kit (Molecular Probes, Eugene, OR) according to the manufacturer's instructions.

### Immunoprecipitation, immunoblotting and protein determination

For immunoprecipitation experiments, myoblasts and myotubes from plectin wild-type and plectin-deficient mice were rinsed twice with cold PBS and lysed in 50 mM HEPES/HCl, pH 7.0, 5 mM MgCl<sub>2</sub>, 1 mM EGTA, 100 mM NaCl (lysis solution), supplemented with 0.5% Triton X-100, 0.1 mM DTT, 0.5 mg/ml DNase I (Boehringer Mannheim), 0.2 mg/ml RNase A (Serva), 1 mM PMSF, 10 mM benzamide, 10  $\mu$ g/ml aprotinin, 10  $\mu$ g/ml pepstatin/leupeptin, and phosphatase inhibitor cocktail 1 (1:100, Sigma-Aldrich). Cell suspensions were incubated for 10 minutes at RT to achieve optimal activities of added enzymes. Afterwards, Triton X-100 was added to a final concentration of 1% and lysates were left for further 5

minutes at RT. Lysates of myotubes were passed 10x through a 1 ml pipette tip and insoluble matter was sedimented by centrifugation in an Eppendorf microfuge at 14,000 rpm (20 minutes, 4°C). Supernatants from samples to be quantitatively compared were adjusted to comparable protein concentrations (see below), and then precleared by incubation (30 minutes) with 7 µl (per 100 µl of supernatant) of a 10% solution of protein A (or G) Sepharose in PBS. After removal of beads, supernatants were incubated with antiserum to plectin (#46) or mAbs raised in sheep using a synthetic peptide (amino acids 12-25) of rat AMPK  $\gamma$ 1 subunit for 3 hours at RT, or overnight at 4°C. To recover antibody-antigen complexes, protein A (or G) beads were added (conditions similar to above) and suspensions rotated for 2 hours at 4°C. Beads were sedimented and washed three times with lysis solution containing 1% Triton X-100. Centrifugation steps were carried out by slowly increasing the speed to 6000 rpm in an Eppendorf microfuge. Finally the beads were resuspended in 20 µl of 5× SDS electrophoresis sample buffer (containing 0.001% Bromophenol Blue), heated for 5 minutes at 95°C, and stored frozen until further analysis.

Aliquots of resuspended immunoprecipitates, cell lysates, and tissue homogenates (diaphragm and heart of newborn mice) were subjected to SDS PAGE and electroblotting as described (Andrä et al., 1997). After protein transfer, membranes were blocked with 5% milk powder or 5% horse serum in PBS-Tween, for 50 minutes at RT. They were then incubated with primary antibodies diluted in PBS-Tween for 1 hour at RT, or overnight at 4°C, washed briefly in PBS-Tween, and overlaid with secondary antibodies for 1 hour at RT. For detection of immunoreactive bands, the Super Signal System (Pierce) was used. Signal intensities were quantified using the program Quantiscan. The following primary antibodies were used: sheep anti-AMPK subunit  $\alpha$ 1, sheep anti-AMPK subunit  $\alpha$ 2, antibodies recognising all AMPK subunit  $\alpha$  isoforms (Cell Signaling), and antibodies to Thr172-P AMPK  $\alpha$  subunits (Cell Signaling). Tissue homogenates to be analyzed by immunoblotting were prepared in a similar manner to cultured cell lysates (see above), except that for crushing of the tissues an ultrathurax homogeniser was used at 20,000 rpm for 20 seconds three times at 4°C.

For colorimetric detection and quantification of total protein contents of samples we used a bicinchoninic acid (BCA)-based detergent-compatible Protein Assay (Pierce), and BSA as a standard.

### Nucleotide extraction and HPLC analysis

To extract cellular nucleotides, myocytes (grown on collagen-coated 6 cm culture dishes) were carefully washed with PBS (37°C) and overlaid with ice-cold 0.2 M perchloric acid. After placing the plates for 10 minutes at -80°C, the cells were scratched off and 150 µl of each sample were transferred to an Eppendorf tube and immediately neutralised with 150 µl of 0.5 M K<sub>2</sub>HPO<sub>4</sub>. Perchlorate and debris were removed by sedimentation at 15,800 g (5 minutes, 4°C). Supernatants were analysed using a HiChrom P10SAX-3191 column (Hichrom Ltd., Berkshire, UK) and a Hewlett Packard Series 1100 HPLC system (Agilent Technologies GmbH, Waldbronn, Germany) with a variable wavelength detector set at 254 nm. Solutions A (0.015 M KH<sub>2</sub>PO<sub>4</sub>, pH 3.45) and B (0.5 M K<sub>2</sub>HPO<sub>4</sub>, pH 3.45) were used. A linear gradient rising from 0-100% B in 45 minutes was used with a flow rate of 1 ml/minute and a total run time of 65 minutes. Peak areas were quantified using HP ChemStation for LC software and converted to molar quantities by comparison with AMP, ADP and ATP standards. For normalisation of nucleotide concentrations, protein concentrations were determined using the BCA assay.

The original yeast 2-hybrid screening and the verification of the isolated  $\gamma$ 1-AMPK clone used in the present study were carried out by S. Osmanagic-Myers in partial fulfillment of her diploma thesis. Conditional muscle-specific plectin knockout mouse tissues were kindly provided by P. Konieczny (this laboratory). This work was supported by grants P17862-B09 and F006-11 from the Austrian Science Research Fund. Studies in the laboratory of D.G.H. are supported by the Wellcome Trust.

### References

- Adams, J., Chen, Z. P., Van Denderen, B. J., Morton, C. J., Parker, M. W., Witters, L. A., Stapleton, D. and Kemp, B. E. (2004). Intracellular control of AMPK via the gamma1 subunit AMP allosteric regulatory site. *Protein Sci.* **13**, 155-165.
- Al-Hakim, A. K., Goransson, O., Deak, M., Toth, R., Campbell, D. G., Morrice, N. A., Prescott, A. R. and Alessi, D. R. (2005). 14-3-3 cooperates with LKB1 to regulate the activity and localization of QSK and SIK. *J. Cell Sci.* **118**, 5661-5673.
- Andrä, K., Lassmann, H., Bittner, R., Shorny, S., Fässler, R., Probst, F. and Wiche, G. (1997). Targeted inactivation of plectin reveals essential function in maintaining the integrity of skin, muscle, and heart cytoarchitecture. *Genes Dev.* **11**, 3143-3156.
- Andrä, K., Nikolic, B., Stöcher, M., Drenckhahn, D. and Wiche, G. (1998). Not just scaffolding: plectin regulates actin dynamics in cultured cells. *Genes Dev.* **12**, 3442-3451.
- Atkinson, D. E. (1968). The energy charge of the adenylate pool as a regulatory parameter. Interaction with feedback modifiers. *Biochemistry* **7**, 4030-4034.
- Baeza-Raja, B. and Munoz-Canoves, P. (2004). p38 MAPK-induced nuclear factor-kappaB activity is required for skeletal muscle differentiation: role of interleukin-6. *Mol. Biol. Cell* **15**, 2013-2026.
- Blanco-Bose, W. E., Yao, C. C., Kramer, R. H. and Blau, H. M. (2001). Purification of mouse primary myoblasts based on alpha 7 integrin expression. *Exp. Cell Res.* **265**, 212-220.
- Carling, D. (2004). The AMP-activated protein kinase cascade – a unifying system for energy control. *Trends Biochem. Sci.* **29**, 18-24.
- Carling, D., Clarke, P. R., Zammit, V. A. and Hardie, D. G. (1989). Purification and characterization of the AMP-activated protein kinase. Copurification of acetyl-CoA carboxylase kinase and 3-hydroxy-3-methylglutaryl-CoA reductase kinase activities. *Eur. J. Biochem.* **186**, 129-136.
- Chen, Z., Heierhorst, J., Mann, R. J., Mitchelhill, K. I., Michell, B. J., Witters, L. A., Lynch, G. S., Kemp, B. E. and Stapleton, D. (1999). Expression of the AMP-activated protein kinase beta1 and beta2 subunits in skeletal muscle. *FEBS Lett.* **460**, 343-348.
- Cheung, P. C., Salt, I. P., Davies, S. P., Hardie, D. G. and Carling, D. (2000). Characterization of AMP-activated protein kinase gamma-subunit isoforms and their role in AMP binding. *Biochem. J.* **346**, 659-669.
- Crute, B. E., Seefeld, K., Gamble, J., Kemp, B. E. and Witters, L. A. (1998). Functional domains of the alpha1 catalytic subunit of the AMP-activated protein kinase. *J. Biol. Chem.* **273**, 35347-35354.
- Davies, S. P., Helps, N. R., Cohen, P. T. and Hardie, D. G. (1995). 5'-AMP inhibits dephosphorylation, as well as promoting phosphorylation, of the AMP-activated protein kinase. Studies using bacterially expressed human protein phosphatase-2C alpha and native bovine protein phosphatase-2AC. *FEBS Lett.* **377**, 421-425.
- Durante, P. E., Mustard, K. J., Park, S. H., Winder, W. W. and Hardie, D. G. (2002). Effects of endurance training on activity and expression of AMP-activated protein kinase isoforms in rat muscles. *Am. J. Physiol. Endocrinol. Metab.* **283**, E178-E186.
- Fleming, I., Fisslthaler, B., Dixit, M. and Busse, R. (2005). Role of PECAM-1 in the shear-stress-induced activation of Akt and the endothelial nitric oxide synthase (eNOS) in endothelial cells. *J. Cell Sci.* **118**, 4103-4111.
- Foisner, R., Feldman, B., Sander, L., Seifert, G., Artlieb, U. and Wiche, G. (1994). A panel of monoclonal antibodies to rat plectin: distinction by epitope mapping and immunoreactivity with different tissues and cell lines. *Acta Histochem.* **96**, 421-438.
- Gache, Y., Chavanas, S., Lacour, J. P., Wiche, G., Owaribe, K., Meneguzzi, G. and Ortonne, J. P. (1996). Defective expression of plectin/HD1 in epidermolysis bullosa simplex with muscular dystrophy. *J. Clin. Invest.* **97**, 2289-2298.
- Hamilton, S. R., Stapleton, D., O'Donnell, J. B., Jr, Kung, J. T., Dalal, S. R., Kemp, B. E. and Witters, L. A. (2001). An activating mutation in the gamma1 subunit of the AMP-activated protein kinase. *FEBS Lett.* **500**, 163-168.
- Hardie, D. G. and Carling, D. (1997). The AMP-activated protein kinase – fuel gauge of the mammalian cell? *Eur. J. Biochem.* **246**, 259-273.
- Hardie, D. G. and Hawley, S. A. (2001). AMP-activated protein kinase: the energy charge hypothesis revisited. *BioEssays* **23**, 1112-1119.
- Hardie, D. G., Carling, D. and Carlson, M. (1998). The AMP-activated/SNF1 protein kinase subfamily: metabolic sensors of the eukaryotic cell? *Annu. Rev. Biochem.* **67**, 821-855.
- Hardie, D. G., Salt, I. P., Hawley, S. A. and Davies, S. P. (1999). AMP-activated protein kinase: an ultrasensitive system for monitoring cellular energy charge. *Biochem. J.* **338**, 717-722.
- Hardie, D. G., Scott, J. W., Pan, D. A. and Hudson, E. R. (2003). Management of cellular energy by the AMP-activated protein kinase system. *FEBS Lett.* **546**, 113-120.
- Hawley, S. A., Selbert, M. A., Goldstein, E. G., Edelman, A. M., Carling, D. and Hardie, D. G. (1995). 5'-AMP activates the AMP-activated protein kinase cascade, and Ca<sup>2+</sup>/calmodulin activates the calmodulin-dependent protein kinase I cascade, via three independent mechanisms. *J. Biol. Chem.* **270**, 27186-27191.
- Hawley, S. A., Boudeau, J., Reid, J. L., Mustard, K. J., Udd, L., Makela, T. P., Alessi, D. R. and Hardie, D. G. (2003). Complexes between the LKB1 tumor suppressor, STRAD alpha/beta and MO25 alpha/beta are upstream kinases in the AMP-activated protein kinase cascade. *J. Biol.* **2**, 28.
- Jacks, T., Remington, L., Williams, B. O., Schmitt, E. M., Halachmi, S., Bronson, R. T. and Weinberg, R. A. (1994). Tumor spectrum analysis in p53-mutant mice. *Curr. Biol.* **4**, 1-7.
- Janmey, P. A. (1998). The cytoskeleton and cell signaling: component localization and mechanical coupling. *Physiol. Rev.* **78**, 763-781.
- Kemp, B. E. (2004). Bateman domains and adenosine derivatives form a binding contract. *J. Clin. Invest.* **113**, 182-184.
- Larsen, A. K., Møller, M. T., Blankson, H., Samari, H. R., Holden, L. and Seglen, P. O. (2002). Naringin-sensitive phosphorylation of plectin, a cytoskeletal cross-linking protein, in isolated rat hepatocytes. *J. Biol. Chem.* **277**, 34826-34835.
- Lunter, P. C. and Wiche, G. (2002). Direct binding of plectin to Fer kinase and negative regulation of its catalytic activity. *Biochem. Biophys. Res. Commun.* **296**, 904-910.
- Mahlapu, M., Johansson, C., Lindgren, K., Hjalme, G., Barnes, B. R., Krook, A., Zierath, J. R., Andersson, L. and Marklund, S. (2004). Expression profiling of the gamma-subunit isoforms of AMP-activated protein kinase suggests a major role for gamma3 in white skeletal muscle. *Am. J. Physiol. Endocrinol. Metab.* **286**, E194-E200.
- McLean, W. H., Pulkkinen, L., Smith, F. J., Rugg, E. L., Lane, E. B., Bullrich, F., Burgeson, R. E., Amano, S., Hudson, D. L., Owaribe, K. et al. (1996). Loss of plectin causes epidermolysis bullosa with muscular dystrophy: cDNA cloning and genomic organization. *Genes Dev.* **10**, 1724-1735.
- Merrill, G. F., Kurth, E. J., Hardie, D. G. and Winder, W. W. (1997). AICA riboside increases AMP-activated protein kinase, fatty acid oxidation, and glucose uptake in rat muscle. *Am. J. Physiol.* **273**, E1107-E1112.

- Mitchellhill, K. I., Stapleton, D., Gao, G., House, C., Michell, B., Katsis, F., Witters, L. A. and Kemp, B. E. (1994). Mammalian AMP-activated protein kinase shares structural and functional homology with the catalytic domain of yeast Snf1 protein kinase. *J. Biol. Chem.* **269**, 2361-2364.
- Morgenstern, J. P. and Land, H. (1990). Advanced mammalian gene transfer: high titre retroviral vectors with multiple drug selection markers and a complementary helper-free packaging cell line. *Nucleic Acids Res.* **18**, 3587-3596.
- Mu, J., Brozinick, J. T., Jr, Valladares, O., Bucan, M. and Birnbaum, M. J. (2001). A role for AMP-activated protein kinase in contraction- and hypoxia-regulated glucose transport in skeletal muscle. *Mol. Cell* **7**, 1085-1094.
- Neumann, D., Schlattner, U. and Wallimann, T. (2003a). A molecular approach to the concerted action of kinases involved in energy homeostasis. *Biochem. Soc. Trans.* **31**, 169-174.
- Neumann, D., Woods, A., Carling, D., Wallimann, T. and Schlattner, U. (2003b). Mammalian AMP-activated protein kinase: functional, heterotrimeric complexes by co-expression of subunits in *Escherichia coli*. *Protein. Expr. Purif.* **30**, 230-237.
- Osmanagic-Myers, S. and Wiche, G. (2004). Plectin-RACK1 (receptor for activated C kinase 1) scaffolding: a novel mechanism to regulate protein kinase C activity. *J. Biol. Chem.* **279**, 18701-18710.
- Ponticos, M., Lu, Q. L., Morgan, J. E., Hardie, D. G., Partridge, T. A. and Carling, D. (1998). Dual regulation of the AMP-activated protein kinase provides a novel mechanism for the control of creatine kinase in skeletal muscle. *EMBO J.* **17**, 1688-1699.
- Rando, T. A. and Blau, H. M. (1994). Primary mouse myoblast purification, characterization, and transplantation for cell-mediated gene therapy. *J. Cell Biol.* **125**, 1275-1287.
- Reipert, S., Steinböck, F., Fischer, I., Bittner, R. E., Zeöld, A. and Wiche, G. (1999). Association of mitochondria with plectin and desmin intermediate filaments in striated muscle. *Exp. Cell Res.* **252**, 479-491.
- Salt, I., Celler, J. W., Hawley, S. A., Prescott, A., Woods, A., Carling, D. and Hardie, D. G. (1998). AMP-activated protein kinase: greater AMP dependence, and preferential nuclear localization, of complexes containing the  $\alpha 2$  isoform. *Biochem. J.* **334**, 177-187.
- Samari, H. R., Moller, M. T., Holden, L., Asmyhr, T. and Seglen, P. O. (2005). Stimulation of hepatocytic AMP-activated protein kinase by okadaic acid and other autophagy-suppressive toxins. *Biochem. J.* **386**, 237-244.
- Sanz, P. (2003). Snf1 protein kinase: a key player in the response to cellular stress in yeast. *Biochem. Soc. Trans.* **31**, 178-181.
- Schröder, R., Fürst, D. O., Klasen, C., Reimann, J., Herrmann, H. and van der Ven, P. F. (2000). Association of plectin with Z-disks is a prerequisite for the formation of the intermyofibrillar desmin cytoskeleton. *Lab. Invest.* **80**, 455-464.
- Scott, J. W., Hawley, S. A., Green, K. A., Anis, M., Stewart, G., Scullion, G. A., Norman, D. G. and Hardie, D. G. (2004). CBS domains form energy-sensing modules whose binding of adenosine ligands is disrupted by disease mutations. *J. Clin. Invest.* **113**, 274-284.
- Smith, F. J., Eady, R. A., Leigh, I. M., McMillan, J. R., Rugg, E. L., Kelsell, D. P., Bryant, S. P., Spurr, N. K., Geddes, J. F., Kirtschig, G. et al. (1996). Plectin deficiency results in muscular dystrophy with epidermolysis bullosa. *Nat. Genet.* **13**, 450-457.
- Stapleton, D., Mitchellhill, K. I., Gao, G., Widmer, J., Michell, B. J., Teh, T., House, C. M., Fernandez, C. S., Cox, T., Witters, L. A. et al. (1996). Mammalian AMP-activated protein kinase subfamily. *J. Biol. Chem.* **271**, 611-614.
- Stapleton, D., Woollatt, E., Mitchellhill, K. I., Nicholl, J. K., Fernandez, C. S., Michell, B. J., Witters, L. A., Power, D. A., Sutherland, G. R. and Kemp, B. E. (1997). AMP-activated protein kinase isoenzyme family: subunit structure and chromosomal location. *FEBS Lett.* **409**, 452-456.
- Stein, S. C., Woods, A., Jones, N. A., Davison, M. D. and Carling, D. (2000). The regulation of AMP-activated protein kinase by phosphorylation. *Biochem. J.* **345**, 437-443.
- Sullivan, J. E., Carey, F., Carling, D. and Beri, R. K. (1994). Characterisation of 5'-AMP-activated protein kinase in human liver using specific peptide substrates and the effects of 5'-AMP analogues on enzyme activity. *Biochem. Biophys. Res. Commun.* **200**, 1551-1556.
- Thornton, C., Snowden, M. A. and Carling, D. (1998). Identification of a novel AMP-activated protein kinase beta subunit isoform that is highly expressed in skeletal muscle. *J. Biol. Chem.* **273**, 12443-12450.
- Turnley, A. M., Stapleton, D., Mann, R. J., Witters, L. A., Kemp, B. E. and Bartlett, P. F. (1999). Cellular distribution and developmental expression of AMP-activated protein kinase isoforms in mouse central nervous system. *J. Neurochem.* **72**, 1707-1716.
- Velasco, G., Geelen, M. J. and Guzman, M. (1997). Control of hepatic fatty acid oxidation by 5'-AMP-activated protein kinase involves a malonyl-CoA-dependent and a malonyl-CoA-independent mechanism. *Arch. Biochem. Biophys.* **337**, 169-175.
- Viollet, B., Andreelli, F., Jorgensen, S. B., Perrin, C., Flamez, D., Mu, J., Wojtaszewski, J. F., Schuit, F. C., Birnbaum, M., Richter, E. et al. (2003). Physiological role of AMP-activated protein kinase (AMPK): insights from knockout mouse models. *Biochem. Soc. Trans.* **31**, 216-219.
- Wiche, G. (1998). Role of plectin in cytoskeleton organization and dynamics. *J. Cell Sci.* **111**, 2477-2486.
- Wiche, G. and Baker, M. A. (1982). Cytoplasmic network arrays demonstrated by immunolocalization using antibodies to a high molecular weight protein present in cytoskeletal preparations from cultured cells. *Exp. Cell Res.* **138**, 15-29.
- Wiche, G., Krepler, R., Artlieb, U., Pytela, R. and Denk, H. (1983). Occurrence and immunolocalization of plectin in tissues. *J. Cell Biol.* **97**, 887-901.
- Winder, W. W. (2001). Energy-sensing and signaling by AMP-activated protein kinase in skeletal muscle. *J. Appl. Physiol.* **91**, 1017-1028.
- Winder, W. W., Hardie, D. G., Mustard, K. J., Greenwood, L. J., Paxton, B. E., Park, S. H., Rubink, D. S. and Taylor, E. B. (2003). Long-term regulation of AMP-activated protein kinase and acetyl-CoA carboxylase in skeletal muscle. *Biochem. Soc. Trans.* **31**, 182-185.
- Woods, A., Cheung, P. C., Smith, F. C., Davison, M. D., Scott, J., Beri, R. K. and Carling, D. (1996a). Characterization of AMP-activated protein kinase beta and gamma subunits. Assembly of the heterotrimeric complex in vitro. *J. Biol. Chem.* **271**, 10282-10290.
- Woods, A., Salt, I., Scott, J., Hardie, D. G. and Carling, D. (1996b). The  $\alpha 1$  and  $\alpha 2$  isoforms of the AMP-activated protein kinase have similar activities in rat liver but exhibit differences in substrate specificity in vitro. *FEBS Lett.* **397**, 347-351.
- Woods, A., Vertommen, D., Neumann, D., Turk, R., Bayliss, J., Schlattner, U., Wallimann, T., Carling, D. and Rider, M. H. (2003). Identification of phosphorylation sites in AMP-activated protein kinase (AMPK) for upstream AMPK kinases and study of their roles by site-directed mutagenesis. *J. Biol. Chem.* **278**, 28434-28442.
- Wu, Z., Woodring, P. J., Bhakta, K. S., Tamura, K., Wen, F., Feramisco, J. R., Karin, M., Wang, J. Y. and Puri, P. L. (2000). p38 and extracellular signal-regulated kinases regulate the myogenic program at multiple steps. *Mol. Cell. Biol.* **20**, 3951-3964.