

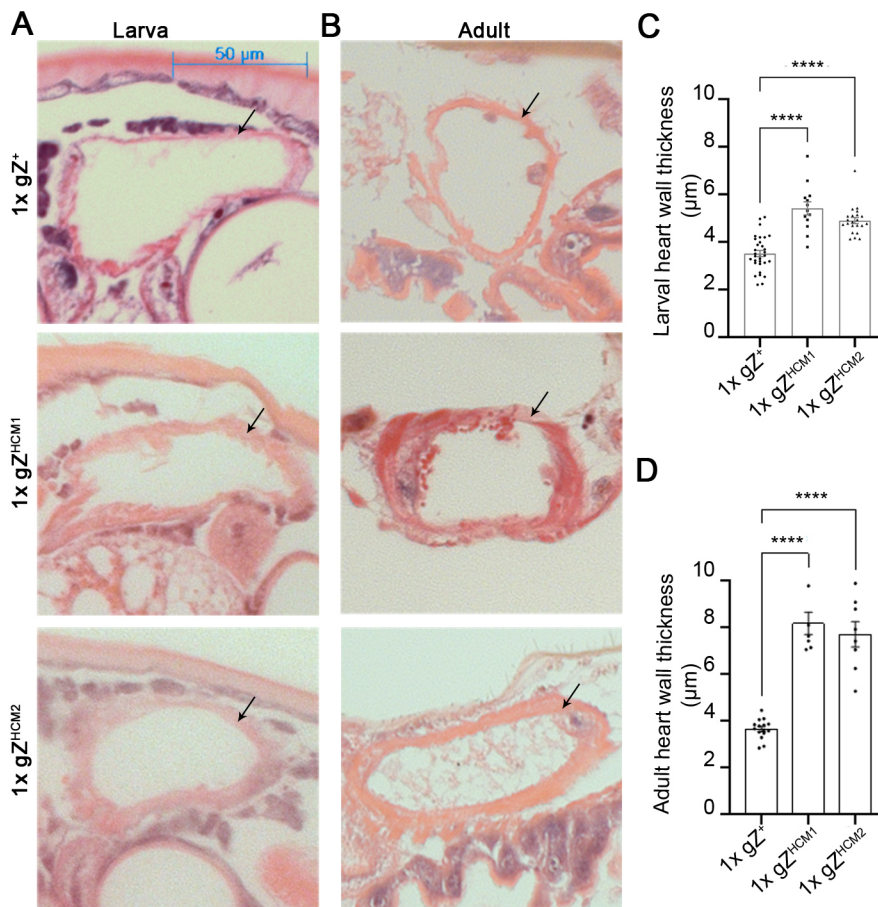
CORRECTION

# Correction: ELAC2/RNaseZ-linked cardiac hypertrophy in *Drosophila melanogaster*

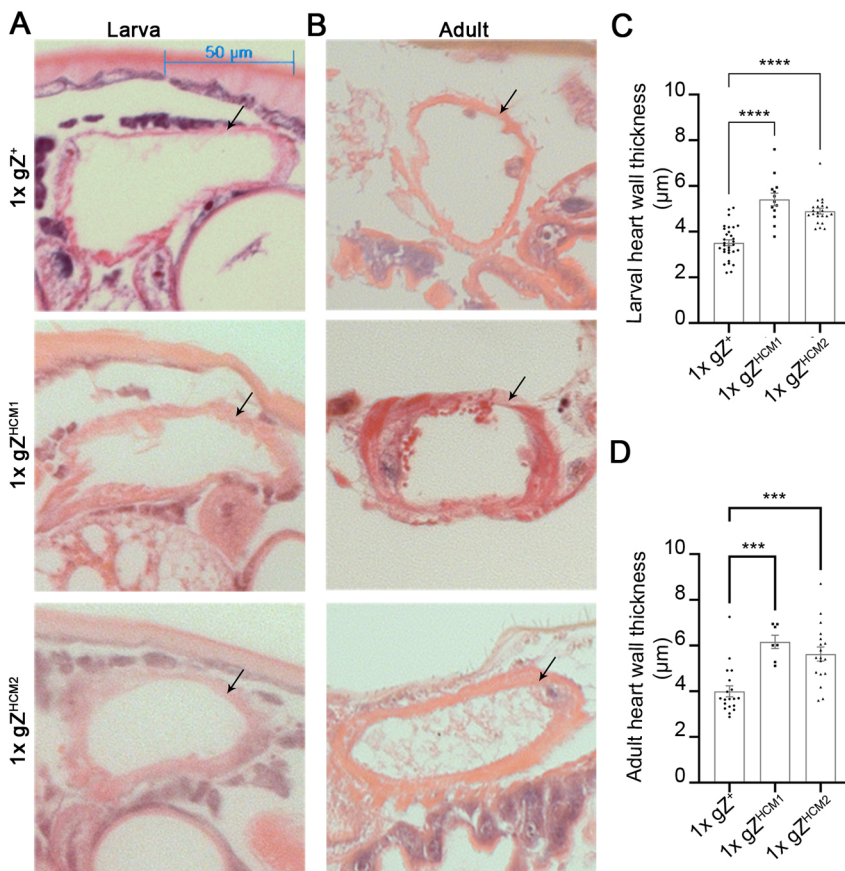
Ekaterina Migunova, Joanna Theophilopoulos, Marisa Mercadante, Jing Men, Chao Zhou and Edward B. Dubrovsky

There was an error in Disease Models & Mechanisms (2021) 14, dmm048931 (doi:10.1242/dmm.048931).

During the revision process, and at the request of reviewers, alternative software was used to represent the data shown in Fig. 5D. Unfortunately, incorrect data were used during the replotting. Fig. 5D has now been plotted with the correct primary data described in the paper. The results and conclusions remain unaffected.



**Fig. 5 (corrected). gZ<sup>HCM</sup> mutants show markedly increased heart wall thickness.** (A,B) Histological sections in transverse orientations showing heart wall thicknesses of control 1xgZ<sup>+</sup> (Z<sup>24</sup>;gZ<sup>+/+</sup>) and mutant animals 1xgZ<sup>HCM1</sup> (Z<sup>24</sup>;gZ<sup>HCM1/+</sup>) and 1xgZ<sup>HCM2</sup> (Z<sup>24</sup>;gZ<sup>HCM2/+</sup>). In (A), A6/A7 abdominal segments of the heart of 3<sup>rd</sup> instar larvae. In (B), A1/A2 abdominal segments of the heart of young adults (6-9 days after eclosion). Arrows point at the heart wall. (C,D) Quantification of heart wall thicknesses measured from serial transverse histological sections of larvae 1xgZ<sup>+</sup> (n=32), 1xgZ<sup>HCM1</sup> (n=13) and 1xgZ<sup>HCM2</sup> (n=22) (C), and adult flies 1xgZ<sup>+</sup> (n=15), 1xgZ<sup>HCM1</sup> (n=8) and 1xgZ<sup>HCM2</sup> (n=7) (D). \*\*\*\*P<0.0001 (one-way ANOVA followed by Dunnett's multiple comparison's test). Error bars indicate the mean±s.e.m.



**Fig. 5 (original). gZ<sup>HCM</sup> mutants show markedly increased heart wall thickness.** (A,B) Histological sections in transverse orientations showing heart wall thicknesses of control 1xgZ<sup>+</sup> (Z<sup>24</sup>;gZ<sup>+/+</sup>) and mutant animals 1xgZ<sup>HCM1</sup> (Z<sup>24</sup>;gZ<sup>HCM1/+</sup>) and 1xgZ<sup>HCM2</sup> (Z<sup>24</sup>;gZ<sup>HCM2/+</sup>). In (A), A6/A7 abdominal segments of the heart of 3<sup>rd</sup> instar larvae. In (B), A1/A2 abdominal segments of the heart of young adults (6-9 days after eclosion). Arrows point at the heart wall. (C,D) Quantification of heart wall thicknesses measured from serial transverse histological sections of larvae 1xgZ<sup>+</sup> (n=32), 1xgZ<sup>HCM1</sup> (n=13) and 1xgZ<sup>HCM2</sup> (n=22) (C), and adult flies 1xgZ<sup>+</sup> (n=15), 1xgZ<sup>HCM1</sup> (n=8) and 1xgZ<sup>HCM2</sup> (n=7) (D). \*\*\*P<0.001 and \*\*\*\*P<0.0001 (one-way ANOVA followed by Dunnett's multiple comparison's test). Error bars indicate the mean±s.e.m.

Both the online full-text and PDF versions have been updated. DMM and the authors apologise to readers for this error and any inconvenience it may have caused.