

A differential developmental pattern of spinal interneuron apoptosis during synaptogenesis: insights from genetic analyses of the protocadherin- γ gene cluster

Tuhina Prasad¹, Xiaozhong Wang², Paul A. Gray³ and Joshua A. Weiner^{1,4,*}

Although the role of developmental apoptosis in shaping the complement and connectivity of sensory and motoneurons is well documented, the extent to which cell death affects the 13 cardinal classes of spinal interneurons is unclear. Using a series of genetic manipulations *in vivo*, we demonstrate for the first time a differential pattern of developmental apoptosis in molecularly identified spinal interneuron populations, and implicate the adhesion molecule family encoded by the 22-member protocadherin- γ (*Pcdh- γ*) gene cluster in its control. In constitutive *Pcdh- γ* null mouse embryos, many interneuron populations undergo increased apoptosis, but to differing extents: for example, over 80% of En1-positive V1 neurons are lost, whereas only 30% of Chx10-positive V2a neurons are lost and there is no reduction in the number of V1-derived Renshaw cells. We show that this represents an exacerbation of a normal, underlying developmental pattern: the extent of each population's decrease in *Pcdh- γ* mutants is precisely commensurate both with the extent of its loss during normal embryogenesis and with the extent of its increase in *Bax*^{-/-} mice, in which apoptosis is genetically blocked. Interneuron apoptosis begins during the first wave of synaptogenesis in the spinal cord, occurring first among ventral populations (primarily between E14 and E17), and only later among dorsal populations (primarily after P0). Utilizing a new, conditional *Pcdh- γ* mutant allele, we show that the γ -Pcdhs can promote survival non-cell-autonomously: mutant neurons can survive if they are surrounded by normal neurons, and normal neurons can undergo apoptosis if they are surrounded by mutant neurons.

KEY WORDS: Ventral horn, Spinal cord, Apoptosis, Synapse formation, Interneurons, Programmed cell death

INTRODUCTION

In the embryonic central nervous system (CNS), there is a vast overproduction of neurons, with 50% or more undergoing apoptosis during the developmental period (Oppenheim, 1991; Nijhawan et al., 2000; Buss et al., 2006). Apoptosis has been shown to occur in proliferative zones, where it may act as a selection mechanism to remove aberrant progenitors (Blaschke et al., 1996; Blaschke et al., 1998; Kuida et al., 1996; Kuida et al., 1998), as well as in cell types that are needed only during a restricted developmental period, such as subplate neurons in the cerebral cortex and cells of the roof and floor plates in the spinal cord (Allendoerfer and Shatz, 1994; Buss and Oppenheim, 2004; Homma et al., 1994; Buss et al., 2006). The best-characterized role of apoptosis in the developing nervous system, however, operates during synaptogenesis, in which competition for synaptic activity and/or trophic factors leads to the loss of excess neurons and to the size matching of afferent and efferent populations (Buss et al., 2006; Lowrie and Lawson, 2000; Mennerick and Zorumski, 2000; Oppenheim, 1991). The demonstration of developmental apoptosis has been clearest in experimentally accessible, clearly identifiable neuronal populations with defined patterns of connectivity in which the target cells can also be examined.

Less clear has been the extent to which developmental apoptosis occurs in populations that are intermixed and that project widely or diffusely within a given region of the CNS (Lowrie and Lawson,

2000). Spinal interneurons make up over 95% of the spinal cord (Hochman, 2007) and can be grouped into at least 13 cardinal populations (nine dorsal and four ventral), which are derived from distinct progenitor domains and differ in terms of neurotransmitter phenotype, somal location, axonal projection pattern and expression of transcription factor markers (Goulding et al., 2002; Goulding and Pfaff, 2005; Helms and Johnson, 2003; Lewis, 2006) (see Fig. 2A). Dorsal interneurons are involved primarily in the processing and relaying of sensory information from the trunk and limbs, whereas the primary function of ventral interneurons is to coordinate motor output via modulation of motoneurons. Spinal interneuron populations receive inputs from diverse sources, including dorsal root ganglia (DRG) sensory afferents, descending axons from the brain, interneurons within the same or different spinal cord segments, and, in the case of the ventral Renshaw cells, motoneurons. These diffuse patterns of connectivity make it more difficult to conceptualize the role of developmental cell death, and studies examining whether spinal interneurons, like sensory and motoneurons, undergo a period of naturally occurring apoptosis have produced conflicting results.

Using pyknosis as a hallmark of cell death, McKay and Oppenheim (McKay and Oppenheim, 1991) found no evidence that chick spinal interneurons die during development or following loss of afferent and efferent connections by limb removal or spinal cord transection. Using the TUNEL method, however, it was subsequently shown that a large number of cells, presumed to be interneurons based on their location, undergo apoptosis in the rat spinal cord between embryonic day (E) 20 and postnatal day (P) 4 (Lawson et al., 1997). Spinal interneuron apoptosis, postulated to be due to loss of DRG afferents and/or target motoneurons, was also observed in neonatal rats following sciatic nerve crush (Lawson and Lowrie, 1998) or axotomy (Oliveira et al., 1997; Oliveira et al., 2002). A study using embryonic rat spinal cord explants *in vitro*

¹Department of Biology, The University of Iowa, Iowa City, IA 52242, USA.

²Department of Biochemistry, Molecular Biology and Cell Biology, Northwestern University, Evanston, IL 60208, USA. ³Department of Anatomy and Neurobiology, Washington University School of Medicine, St Louis, MO 63110, USA. ⁴Neuroscience Graduate Program, The University of Iowa, Iowa City, IA 52242, USA.

* Author for correspondence (e-mail: joshua-weiner@uiowa.edu)

suggested that neurotrophin 3 released by motoneurons promotes the survival of Pax2-expressing spinal interneurons (Béchede et al., 2002). Mice with massive motoneuron loss owing to genetic ablation of muscles did not, however, exhibit obviously increased interneuron apoptosis (Grieshammer et al., 1998; Kablar and Rudnicki, 1999). None of these studies, however, systematically analyzed apoptosis with respect to the many molecularly identified interneuron populations. Understanding the role of developmental cell death in shaping these populations will be important for determining how early patterns of fate specification mediated by transcription factors relate to the connectivity and mature function of spinal interneurons, a major goal towards which progress has begun to accelerate (Alvarez et al., 2005; Cheng et al., 2005; Gosgnach et al., 2006; McLean et al., 2007; Mizuguchi et al., 2006; Pillai et al., 2007).

Our previous work (Wang et al., 2002b; Weiner et al., 2005) has implicated the γ -protocadherins (γ -Pcdhs), a family of 22 putative adhesion molecules, in the development of spinal interneurons. The γ -Pcdhs are expressed throughout the embryonic CNS and are found at some, but by no means all, developing synapses (Wang et al., 2002b; Frank et al., 2005; Phillips et al., 2003). Mice in which the entire *Pcdh- γ* gene cluster has been deleted (*Pcdh- γ ^{del/del}*) lack voluntary movements and spinal reflexes, display an alternating tremor of fore- and hindlimbs, and die several hours after birth (Wang et al., 2002b). In the *Pcdh- γ ^{del/del}* spinal cord, massive interneuron apoptosis, neurodegeneration and synapse loss are observed in the late embryonic period (Wang et al., 2002b). When apoptosis is genetically blocked by the additional deletion of the pro-apoptotic protein Bax, the loss of γ -Pcdhs still results in significant reductions of spinal cord synaptic density, and *Pcdh- γ ^{del/del}; Bax^{-/-}* double-mutant pups do not survive (Weiner et al., 2005). Spinal interneurons with reduced levels of γ -Pcdhs can survive in vitro but make fewer synapses, at which both excitatory and inhibitory spontaneous currents are significantly reduced in amplitude (Weiner et al., 2005; Weiner, 2006).

Here, we use both *Pcdh- γ ^{del/del}* mice and a new conditional *Pcdh- γ* mutant allele, along with wild-type mice, *Bax* mutants and four Cre transgenic lines, to demonstrate that molecularly distinct spinal interneuron populations exhibit a normal period of differential developmental cell death. Interneuron apoptosis proceeds in a ventral-to-dorsal temporal gradient and is associated with the first wave of synaptogenesis in the spinal cord. The phenotype of *Pcdh- γ* null mice represents an exacerbation of this developmental pattern, as the extent of increased apoptosis within each population is commensurate with its level of apoptosis in wild-type mice. By selectively mutating the *Pcdh- γ* locus in discrete interneuron populations, we further show that the γ -Pcdhs can promote survival non-cell-autonomously, consistent with their roles at cell-cell contacts, including developing synapses.

MATERIALS AND METHODS

Mouse strains

The *Pcdh- γ ^{del}* and *Pcdh- γ ^{fus}* alleles (Wang et al., 2002b) and *Bax^{-/-}* mutants (Deckwerth et al., 1996; Knudson et al., 1995; White et al., 1998) were described previously. *Actin-Cre* (Lewandoski et al., 1997), *Wnt1-Cre* (Danielian et al., 1998) and *Atoh1^{tm2Hzo}* (referred to here as *Atoh1^{-/-}*) (Ben-Arie et al., 2000) mouse lines were obtained from The Jackson Laboratories (Bar Harbor, ME). *Pax2-Cre* mice (Ohyama and Groves, 2004) were the kind gift of Dr Andy Groves (House Ear Institute, Los Angeles, CA), and *Hb9-Cre* mice (Umemori et al., 2004) were the kind gift of Dr Joshua Sanes (Harvard University, Cambridge, MA). The *Pcdh- γ ^{con3}* allele was generated in mouse ES cells by homologous recombination. The targeting vector was modified from that used to create the *Pcdh- γ ^{fus}* allele (Wang et al., 2002b),

in which the EGFP coding sequence was fused in-frame with constant exon 3. A loxP sequence was inserted into an *NheI* site in the 5' homology arm of the targeting vector using a pair of oligonucleotides (5779, 5'-CTAGATAACTTCGTATAGCATACATTATACGAAGTTAT-3'; 5780, 5'-CTAGATAACTTCGTATAATGTATGCTATACGAAGTTAT-3'). The orientation and sequence of the loxP site was confirmed by direct sequencing (using primer 5781, 5'-CTGTGCCAAGCCTTGGTTAGGGA-3'). To confirm the presence of the first loxP site in the targeted ES cells, we used primers 5781 and 5782 (5'-GCTTCCAAAGTGCCCTAGACTAGAG-3'). The resulting *Pcdh- γ ^{con3}* allele contains the following elements at the 3' end of the *Pcdh- γ* cluster: constant exon 2-loxP-constant exon 3/EGFP fusion-loxP-PGK/Neo-loxP. *Pcdh- γ ^{con3/con3}* homozygous mice were viable and fertile in the absence of Cre.

Immunofluorescence

Embryonic and neonatal spinal columns were prepared using one of two methods: (1) fixation for 2 hours in 4% paraformaldehyde (PFA) at 4°C, followed by washes with cold PBS, cryoprotection in 30% sucrose at 4°C, and freezing in OCT compound (Sakura); or (2) snap freezing in OCT using dry ice/ethanol-cooled isopentane. Transverse cryostat sections were cut at 12 μ m. Slides containing fresh-frozen sections were fixed in 100% methanol (MeOH) for 10 minutes at -20°C. Sections were stained as described (Weiner et al., 2005). Primary antibodies used are listed in Table 1.

In situ hybridization

In situ hybridization using an antisense riboprobe against the *Pcdh- γ* constant exons was performed as described (Wang et al., 2002b).

TUNEL labeling

The Fluorescein FragEL DNA fragmentation Detection Kit (Calbiochem) was used according to the manufacturer's instructions.

Image analysis

For interneuron and synaptic puncta counts, each quantification was performed on at least six sections from at least three animals (i.e. at least 18 sections for each marker per genotype). Images were taken at equivalent thoracolumbar levels and camera exposures using 10 \times (cell counts) or 63 \times (synapses) PlanApo objectives on a Leica DM5000B epifluorescence microscope or a Leica SP2 AOBs laser-scanning confocal microscope. Images were captured in Photoshop (Adobe) and similarly adjusted for brightness and contrast. Cell counts were performed manually. For synapses, images were thresholded in Image/J (NIH) and puncta counted using the Analyze Particles function. Statistical significance was determined by ANOVA followed by Bonferroni post-hoc tests using Prism (GraphPad Software).

Western blotting

Twenty μ g of protein from control and mutant brains was resolved on NuPAGE gels (Invitrogen) and blotted using standard methods. Signals were detected by chemiluminescence (SuperSignal West Pico, Pierce).

RT-PCR

Total RNA was extracted from control and mutant tissues using the RNAqueous-4 PCR Kit (Ambion) and first-strand cDNA synthesized using standard methods. Primer sequences are available upon request. Cycling parameters, for 30 cycles: 94°C, 1 minute; 55°C, 1 minute; 72°C, 3 minutes.

RESULTS

Dorsal-ventral disparity of apoptosis in embryonic *Pcdh- γ* null mutant spinal cord

The mouse *Pcdh- γ* gene cluster contains 22 large 'variable' exons, each of which encodes a cadherin-like type I membrane protein consisting of six extracellular domains, a transmembrane domain and a proximal cytoplasmic domain. Each variable exon is expressed from its own promoter (Tasic et al., 2002; Wang et al., 2002a) and spliced to three short 'constant' exons, which encode a 125-amino acid shared C-terminal domain (Fig. 1I); all of the 22 possible variable-constant exon spliced transcripts could be detected by RT-PCR analysis of

Table 1. Primary antibodies employed

Antibody	Species/isotype	Dilution	Fixation	Source
bassoon	Mouse IgG2a	1:200	MeOH	Stressgen
Cleaved caspase 3	Rabbit	1:200	PFA	Cell Signaling
Chx10 (Vsx2)	Guinea pig	1:500	PFA	Sam Pfaff (Salk Institute)
calbindin (D-28k)	Rabbit	1:1000	PFA	Chemicon
Chat	Goat	1:100	PFA	Chemicon
Cre recombinase	Mouse IgG1	1:500	PFA	Chemicon
engrailed 1 (4G11)	Mouse IgG1	1:5	PFA	Developmental Studies Hybridoma Bank (DSHB)
engrailed 1	Guinea pig	1:20,000	PFA	Tom Jessell (Columbia University)
Evx1	Rabbit	1:100	PFA	Martyn Goulding (Salk Institute)
FoxP2	Goat	1:1000	PFA	Novus
FoxP2	Rabbit	1:4000	PFA	Abcam
Gata3 (HG3-31)	Mouse IgG1	1:10	PFA	Santa Cruz Biotechnology
GABA	Rabbit	1:500	PFA	Sigma
gephyrin (7a)	Mouse IgG1	1:500	MeOH	Synaptic Systems
Gfap	Mouse IgG1	1:500	PFA	Sigma
GFP	Rabbit	1:500	MeOH	Molecular Probes
Glycine receptors (4a)	Mouse IgG1	1:500	MeOH	Synaptic Systems
Islet 1 (A8)	Rabbit	1:1000	PFA	Tom Jessell
Islet 1/2 (39.4D5)	Mouse IgG2b	1:10	PFA	DSHB
Lhx1/5 (4F2)	Mouse IgG1	1:3	PFA	DSHB
Lmx1b	Rabbit	1:200	PFA	Abcam
Lhx2	Goat	1:100	MeOH	Santa Cruz Biotechnology
Lhx9	Goat	1:100	MeOH	Santa Cruz Biotechnology
MAP2 (Mtap2)	Mouse IgG1	1:500	PFA	Sigma
MNR2 (81.5C1D)	Mouse IgG1	1:5	PFA	DSHB
NeuN (Neuna60)	Mouse IgG1	1:500	PFA	Chemicon
Nkx2.2 (74.5A5)	Mouse IgG2b	1:1	PFA	DSHB
Pax2	Rabbit	1:200	PFA	Zymed
Pcdh gamma C	Rabbit	1:150	MeOH	Greg Phillips (Mount Sinai School of Medicine)
PSD95 (Dlg4)	Mouse IgG2a	1:200	MeOH	ABR
Vglut1 (Slc17a7)	Guinea pig	1:500	MeOH	Chemicon
Vglut2 (Slc17a6)	Guinea pig	1:500	MeOH	Chemicon
VGAT (Slc32a1)	Guinea pig	1:500	MeOH	Chemicon

embryonic spinal cord (Fig. 1H). In our initial analysis of *Pcdh- γ ^{del/del}* null mutant spinal cord, we noticed that loss of neurons and fiber tracts was most obvious in the ventral horn (Wang et al., 2002b). In sections of E17 or P0 *Pcdh- γ ^{del/del}* spinal cords, apoptotic cells detected by TUNEL (Fig. 1A) or using an antibody against cleaved caspase 3 (Fig. 1B) were increased, compared with controls, primarily in the ventral horn and intermediate gray matter. Consistent with this, increased numbers of microglia (stained with *Griffonia simplicifolia* isolectin B4) (Fig. 1C) and reactive astrocytes (heavily stained by antibodies against Gfap) (Fig. 1D) were observed in ventral, but not dorsal, gray matter of mutants.

We asked whether this disparity could be due to restricted expression of *Pcdh- γ* genes in the ventral spinal cord. In situ hybridization using an antisense riboprobe corresponding to the *Pcdh- γ* constant exons detected strong expression throughout the developing spinal cord, with no apparent difference in level between dorsal and ventral horns (Fig. 1G). Similarly, immunostaining for γ -Pcdh proteins using antibodies against the constant domain (Phillips et al., 2003) (data not shown) or against GFP on tissues from the *Pcdh- γ ^{fus}* mouse line, in which the GFP gene is fused to the end of constant exon 3 (Wang et al., 2002b), demonstrated uniform labeling of the neuropil in the spinal cord between E12 (Fig. 1E) and P0 (Fig. 1F). Consistent with a published report on adult spinal cord (Zou et al., 2007), in situ hybridization using several riboprobes specific for individual *Pcdh- γ* variable exons did not reveal any obvious dorsal or ventral restriction in neonates (data not shown). Together, these data indicate that the dorsal-ventral disparity in levels of apoptosis seen in mutants is not due to spatially restricted expression of the γ -Pcdhs during development.

Differential loss of molecularly defined ventral interneuron populations in *Pcdh- γ* null mutant embryos

Spinal cord neurons are derived embryonically from 11 progenitor domains arrayed along the dorsal-ventral axis, and differentiate to produce nine cardinal classes of neurons dorsally and five ventrally; each neuronal class can be identified by its expression of one or more transcription factors (Lewis, 2006) (see Fig. 2A for those used in this study). In the dorsal horn, these classes include the early-born dI1-dI6 interneurons and the later-born dII_B, dII_A and dII_B interneurons, whereas in the ventral horn they include the V0-V3 interneurons as well as motoneurons. We used antibodies against several of the transcription factors that mark distinct spinal interneuron populations to quantify the loss of these populations in *Pcdh- γ ^{del/del}* mutant mice (Fig. 2A; Table 1). We focused on markers that are still readily detectable at E17 and P0, relatively late developmental time points at which neurodegeneration in the spinal cord is apparent in *Pcdh- γ ^{del/del}* mutants (Wang et al., 2002b). Examples of immunostaining patterns are shown in Fig. 2B-H, and a quantitative summary of our E17 results is presented in Fig. 3.

Several important conclusions about the pattern of interneuron loss in the absence of γ -Pcdhs can be drawn from these data. First, the late embryonic loss of ventral, but not dorsal, interneurons was confirmed. Quantification of molecularly defined populations derived from the V0 (Evx1-positive) (Fig. 2E), V1 (En1-positive) (Fig. 2C), V2a (Chx10-positive) (Fig. 2D), V2b (Gata3-positive) (Fig. 3) and V3 (Nkx2.2-positive) (Fig. 3) domains indicated that these were all reduced in *Pcdh- γ ^{del/del}* mutants. By contrast, dorsal

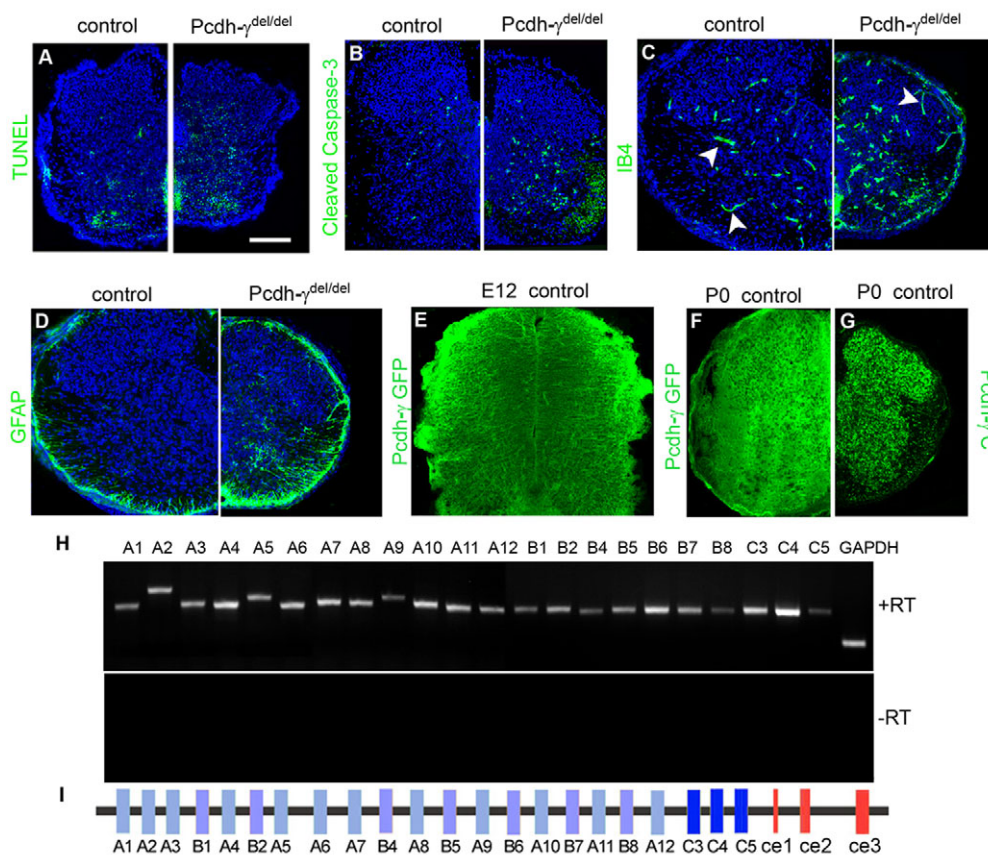


Fig. 1. Dorsal-ventral disparity in spinal interneuron apoptosis in *Pcdh- γ* null mutant mice.

(A–D) TUNEL (A), IB4 staining (C), and immunostaining with antibodies against cleaved caspase 3 (B) or Gfap (D) all demonstrate increased signs of apoptosis and neurodegeneration primarily in the ventral horn of *Pcdh- γ ^{del/del}* spinal cords, as compared with littermate controls, at P0. Arrowheads in C mark blood vessels that, in addition to microglia, are stained by IB4. (E, F) In E12 (E) and P0 (F) *Pcdh- γ ^{fus}* spinal cords, anti-GFP immunostaining demonstrates uniform expression of γ -*Pcdh*-GFP fusion proteins. (G) In situ hybridization using a riboprobe against the *Pcdh- γ* constant exons also yields uniform labeling of dorsal and ventral horns. (H) RT-PCR analysis of E16 spinal cord RNA demonstrates that all 22 variable exon-constant exon spliced transcripts can be detected. RT, reverse transcriptase. (I) Schematic of the mouse *Pcdh- γ* genomic locus, indicating the 22 variable exons (A, B and C subfamilies, blue) and three constant exons (ce, red). Scale bar: 100 μ m.

horn neurons, including those derived from a single domain [Lmx1b-positive dI5 neurons (Fig. 2G) and Lhx2-positive dI1 neurons (data not shown)], as well as those more broadly derived (Pax2-positive dI4 and dI6 neurons and Lhx1/5-positive dI2, dI4 and dI6 neurons) (Fig. 2B), were normal in number at E17 (Fig. 3). Second, within populations that are broadly distributed across both the dorsal and ventral horns, such as Pax2-positive or Lhx1/5-positive interneurons, only those neurons residing in the ventral horn were lost (Fig. 2B). For example, whereas those Pax2-positive neurons derived from dI4 and dI6 were present in normal numbers at E17, the V0- and V1-derived Pax2 neurons were decreased by 50% (Fig. 3). Third, the extent of cell loss varied across ventral interneuron populations. Some neuronal types, such as Nkx2.2-positive V3 interneurons and those V1 interneurons that retain En1 expression at E17, were reduced by ~80%, whereas Chx10-positive V2a interneurons were reduced by only 30% (Fig. 3). As we previously suggested (Wang et al., 2002b), and confirm here quantitatively, motoneurons [positive for choline acetyltransferase (Chat) (Fig. 2H), Isl1 (Fig. 4D) and MNR2 (Fig. 3)] were present in normal numbers in *Pcdh- γ ^{del/del}* spinal cords at all ages examined. Fourth, the extent of cell loss varied even among interneurons derived from the same ventral domain: V1 interneurons that express En1 (Fig. 2C), Pax2 and/or Lhx1/5 (Fig. 2B) were all reduced in *Pcdh- γ ^{del/del}* mutants (Fig. 3), but calbindin-positive putative Renshaw cells (identified by their clustered position near the ventral gray-white matter border within laminae VII and IX) (Mentis et al., 2006), which have been shown to be V1-derived (Alvarez et al., 2005; Sapir et al., 2004), were normal in number (Fig. 2F; Fig. 3).

Interneurons that are generated in dorsal domains but migrate to the ventral horn are lost in *Pcdh- γ* null mutant embryos

We next asked whether interneurons that are generated in dorsal domains, but which subsequently migrate into the ventral horn, would be affected by the loss of γ -Pcdhs. We analyzed two populations of interneurons: dI3-derived Isl1-positive interneurons, which settle in the intermediate gray matter between the dorsal and ventral horns (Gross et al., 2002; Liem et al., 1997), and dI2-derived FoxP2-positive Pax2-negative interneurons. Several populations of FoxP2-positive interneurons are produced in the spinal cord and settle in the ventral horn. Those that coexpress Pax2 are derived from dI6/V0 and V1 (Geiman et al., 2007). A population that is negative for Pax2 is generated dorsally within the Wnt1 expression domain (see Fig. S4 in the supplementary material), appears at E11.5 to be migrating ventrally (Fig. 4A, B), and can be detected at E17 scattered throughout the ventral horn (Fig. 4C). The fact that these FoxP2-positive cells coexpress FoxD3 (Fig. 4A) suggests that they are derived from dI2 (Gross et al., 2002); confirmation of this was obtained by analyzing this population in *Atoh1^{-/-}* mice (Ben-Arie et al., 2000) (see Fig. S1 in the supplementary material).

Having identified these two populations, we quantified them in spinal cords of *Pcdh- γ ^{del/del}* mutant and control embryos at E17. Both the dI2-derived FoxP2-positive neurons and the dI3-derived Isl1-positive neurons were reduced by ~50% in the absence of γ -Pcdhs (Fig. 3; Fig. 4C–F). Together with the results presented above, these data suggest that the dorsal-ventral pattern of interneuron loss observed in *Pcdh- γ ^{del/del}* mutants is influenced by late embryonic developmental events in the ventral horn, rather than by the progenitor domain of origin of a given interneuron.

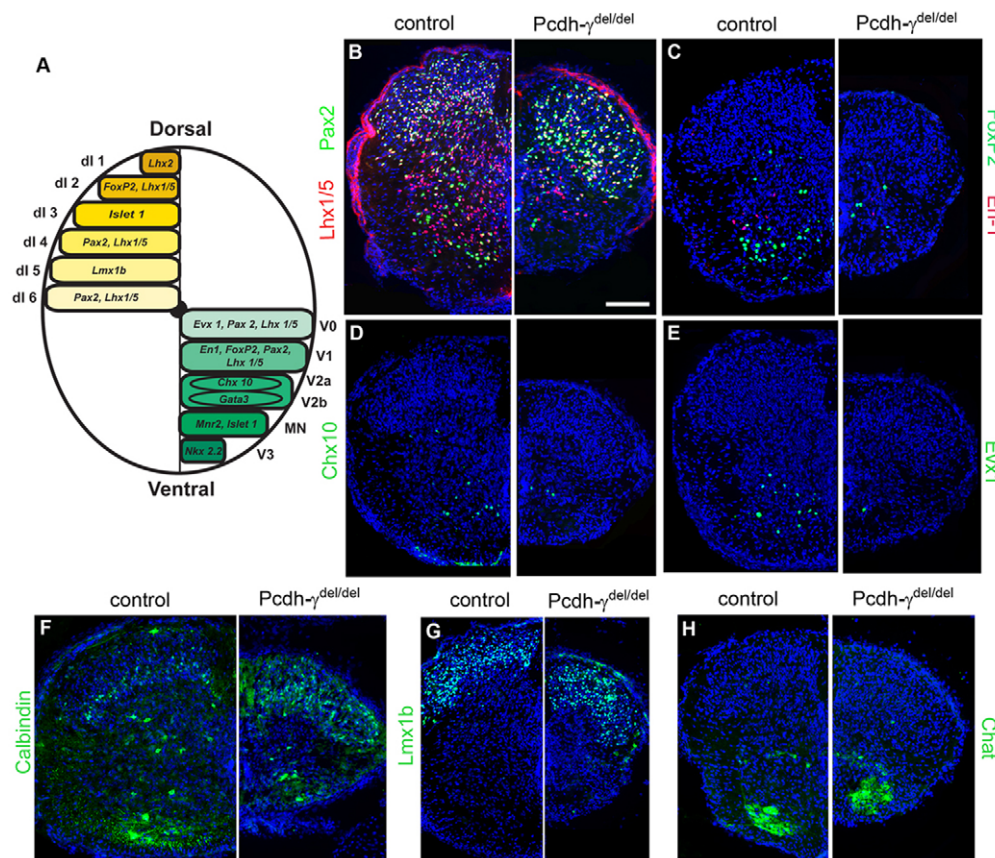


Fig. 2. Loss of molecularly defined spinal interneuron populations in *Pcdh-γ* null mutant mice. (A) Schematic of spinal cord domains and the molecular markers used in this study to identify discrete interneuron populations. (B-H) Hemicords from control and *Pcdh-γ^{del/del}* P0 mice immunostained using antibodies against the indicated markers and counterstained with DAPI (blue). At this age, dorsal interneuron populations are not reduced in the *Pcdh-γ^{del/del}* spinal cord (B,G). By contrast, most ventral interneuron populations are reduced, to varying extents (B-E), with the exception of calbindin-positive putative Renshaw cells in the deep ventral horn (F) and Chat-positive cholinergic interneurons at the border of the intermediate gray matter and the ventral horn (H). Scale bar: 100 μm.

Loss of molecularly defined interneuron populations in *Pcdh-γ^{del/del}* mutants is due to apoptosis

Although our initial analysis of the neonatal *Pcdh-γ^{del/del}* mutant spinal cord suggested that neurogenesis and initial differentiation proceed normally (Wang et al., 2002a), specific interneuron populations were not examined. Thus, it remained possible that some of the results presented above could be due to aberrant interneuron cell fate specification, resulting in loss of molecular markers. We excluded this possibility through three sets of experiments. First, we examined *Pcdh-γ^{del/del}* mutant mice in which apoptosis was blocked by genetic deletion of *Bax* (Weiner et al., 2005). In *Pcdh-γ^{del/del}; Bax^{-/-}* double-mutant mice, the number of interneurons in all ventral populations examined was the same or greater than in control mice (Fig. 5A-C); this is as expected if cell loss in *Pcdh-γ* mutants were due to apoptosis, but not if it were due to cell fate disruptions. Second, through immunostaining we were able to directly identify an increased number of fragmented, apoptotic cells in *Pcdh-γ^{del/del}* spinal cords that were double-positive for cleaved caspase 3 and markers of reduced ventral interneuron populations (Fig. 5D-F). Third, we quantified several ventral interneuron populations at E14, a time point after the end of neurogenesis (Nornes and Carry, 1978) but before the onset of neurodegeneration in *Pcdh-γ^{del/del}* mutants, and found that the size of each population did not differ from wild-type (WT) values (Fig. 5G). Together, these data indicate that the loss of molecularly defined interneuron populations in *Pcdh-γ^{del/del}* mutants is due solely to apoptosis, rather than aberrant cell fate specification.

Apoptosis of spinal interneuron populations in *Pcdh-γ* null mutants reflects an exacerbation of a normal developmental pattern

We next asked whether the differential apoptosis of spinal interneuron populations observed in the absence of γ -Pcdhs might reflect an exacerbation of an existing developmental pattern. We addressed this question by taking two complementary approaches. In the first, we directly quantified the size of eight interneuron populations in WT spinal cords at E14, E17, P0, P2 and P5, taking a decrease in size during development as evidence for apoptosis within that population. We found that each population exhibited developmental reductions of varying extent (Fig. 6A,B). If the increased apoptosis in *Pcdh-γ* null mice represented an exacerbation of an underlying developmental pattern, we would predict that for any given interneuron population, the extent of its increased apoptosis in the mutants (as compared with WT, as quantified in Fig. 3) should be proportional to the extent of its normal loss over time in WT mice. We found that this was indeed the case: as shown in Fig. 6C, there is a near-perfect correlation ($r=0.93$, $P<0.005$) between the extent of each population's reduction from E14-17 in WT mice and the extent of its increased loss in E17 mutants.

Although suggestive, these data come with the caveat that the extent of apoptosis within each population might be overestimated owing to progressive loss of marker expression in older animals, which is known to occur, particularly after P0. Therefore, we took a second approach that obviates this concern. We reasoned that the extent of apoptosis within spinal interneuron populations during normal development could be estimated by determining the extent to which the size of these populations increased in *Bax^{-/-}* mice, in which apoptosis is genetically blocked (Fig. 7A-C). As expected, we

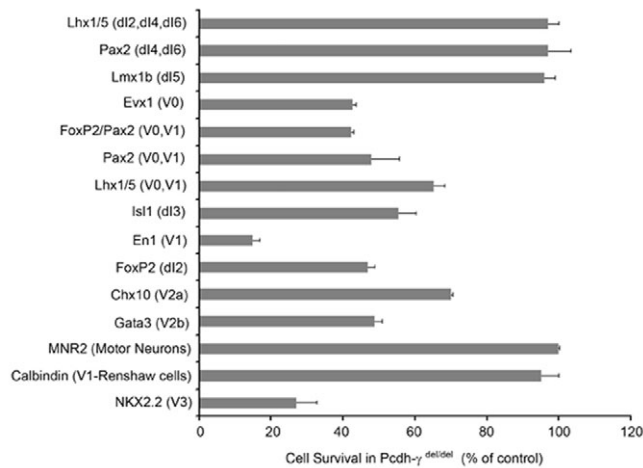


Fig. 3. Quantification of differential loss of molecularly defined spinal interneuron populations in *Pcdh-γ* null mutant mice. Bars (in this and all subsequent bar charts) show mean \pm s.e.m. of cell counts from 18 sections per molecular marker, taken from three animals per genotype. The survival of each cell population in E17 *Pcdh-γ*^{del/del} spinal cords is expressed as a percentage of that in controls.

found that the extent of cell number increase in a given population in *Bax*^{-/-} mice (Fig. 7D) closely paralleled the extent of its decrease in *Pcdh-γ*^{del/del} mutants (Fig. 3). For instance, Chx10-positive V2 neurons were reduced by 29.8% in *Pcdh-γ*^{del/del} mice and increased by 29.2% in *Bax*^{-/-} mice, whereas En1-positive V1 neurons were reduced by 85% in *Pcdh-γ*^{del/del} mice and increased by 61.7% in *Bax*^{-/-} mice; such correlations were statistically significant across all populations examined (Fig. 7F) ($r=0.81$, $P<0.005$).

We also analyzed WT mice and *Bax* mutants to probe the significance of the lack of dorsal interneuron apoptosis in *Pcdh-γ*^{del/del} neonates. Although this could reflect a restricted role for γ -Pcdhs in the ventral spinal cord, two observations suggest otherwise: first, the γ -Pcdh family is expressed uniformly throughout the developing spinal cord (Fig. 1); and second, a ventral-to-dorsal temporal gradient in TUNEL staining has been observed in the late embryonic/early postnatal rat (Lawson et al., 1997), suggesting that dorsal interneurons primarily undergo apoptosis after P0, when the death of *Pcdh-γ*^{del/del} mice precludes further analysis. Analysis of WT interneuron populations confirmed that this is indeed the case: loss of ventral interneuron populations occurred primarily between E14 and E17, and was complete by P0-2 (Fig. 6B), whereas dorsal interneurons were lost only after E17, primarily between P0 and P5 (Fig. 6A). We also analyzed the size of dorsal interneuron populations in *Bax*^{-/-} mice and found that they were increased compared with controls at P5, but not at P0 (Fig. 6D,E), consistent with their apoptosis primarily during the neonatal period, following the late embryonic apoptosis of their ventral counterparts. Intriguingly, calbindin-positive putative Renshaw cells, which are not lost in *Pcdh-γ*^{del/del} spinal cords, were not correspondingly increased in number in *Bax*^{-/-} mice at P0 or P5 (Fig. 7D,E), suggesting that they might not undergo a period of developmental apoptosis, or at least do so much later than other interneurons.

In previous work, we found that in *Pcdh-γ*^{del/del}; *Bax*^{-/-} double-mutant neonates, the overall density of synaptic puncta was reduced by 30-50% compared with controls, despite the lack of apoptosis and normal spinal cord size (Weiner et al., 2005). Furthermore, spinal interneurons with hypomorphic levels of γ -

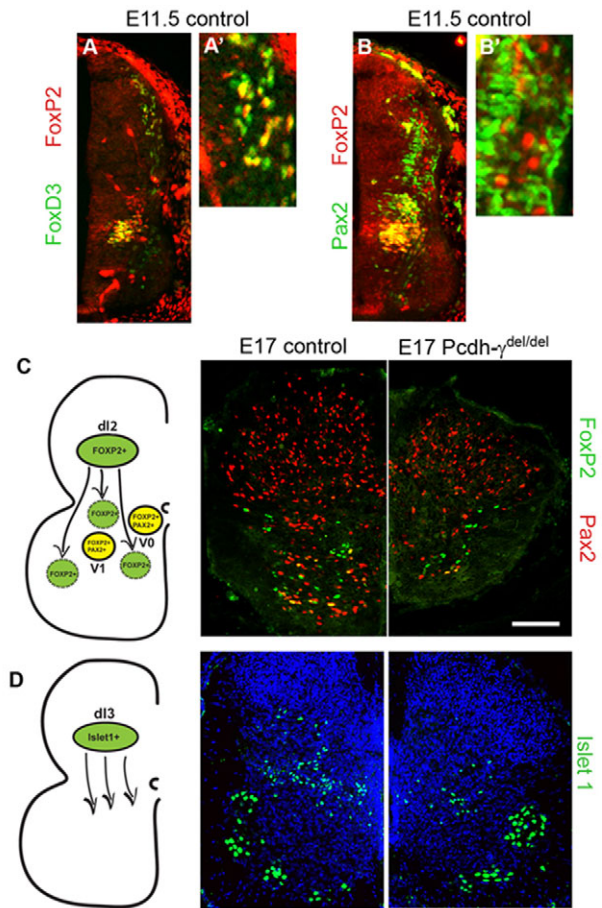


Fig. 4. Dorsal interneurons that migrate into the ventral horn are lost in *Pcdh-γ* null mutant mouse embryos. (A-B') E11.5 control hemicords immunostained with antibodies as indicated. Many dl2-derived FoxD3-positive cells that migrate ventrally coexpress FoxP2 (A; A' shows a magnified view); double-labeled V1 interneurons are also observed. These dorsally derived FoxP2-positive interneurons do not coexpress Pax2 (B,B'); V0/V1-derived double-positive interneurons are, however, observed ventrally. (C) Schematic (left) showing the settling patterns of different populations of FoxP2-positive interneurons. Staining of sections (right) from spinal cords of E17 control and *Pcdh-γ*^{del/del} mice shows that ~50% of the dl2 population (FoxP2-positive Pax2-negative) is lost in mutants. (D) Isl1-positive dl3 interneurons also migrate ventrally, and ~50% are lost in *Pcdh-γ*^{del/del} embryos; note that there is no reduction in Isl1-positive motoneuron pools in mutants. Scale bar: 100 μ m.

Pcdhs can survive in vitro, but make fewer, and physiologically weaker, synapses than do control interneurons (Weiner et al., 2005). These genetic dissociations suggest that at least one primary function of the γ -Pcdhs is to promote synapse formation or maturation in the spinal cord. It has long been known that neuronal survival depends, in most cases, on synaptic activity (reviewed by Mennerick and Zorumski, 2000). The ubiquity of this mechanism has been confirmed dramatically by genetic deletion of *Munc18-1* (*Stxbp1* – Mouse Genome Informatics), which abolishes vesicular synaptic transmission. In *Munc18-1*^{-/-} mice, neurons differentiate normally, project to their targets and form synapses, but subsequently undergo massive apoptosis in the late embryonic period throughout the CNS, leading to stillborn pups (Verhage et al., 2000). The temporal and spatial patterns of apoptosis that we have characterized are consistent with the

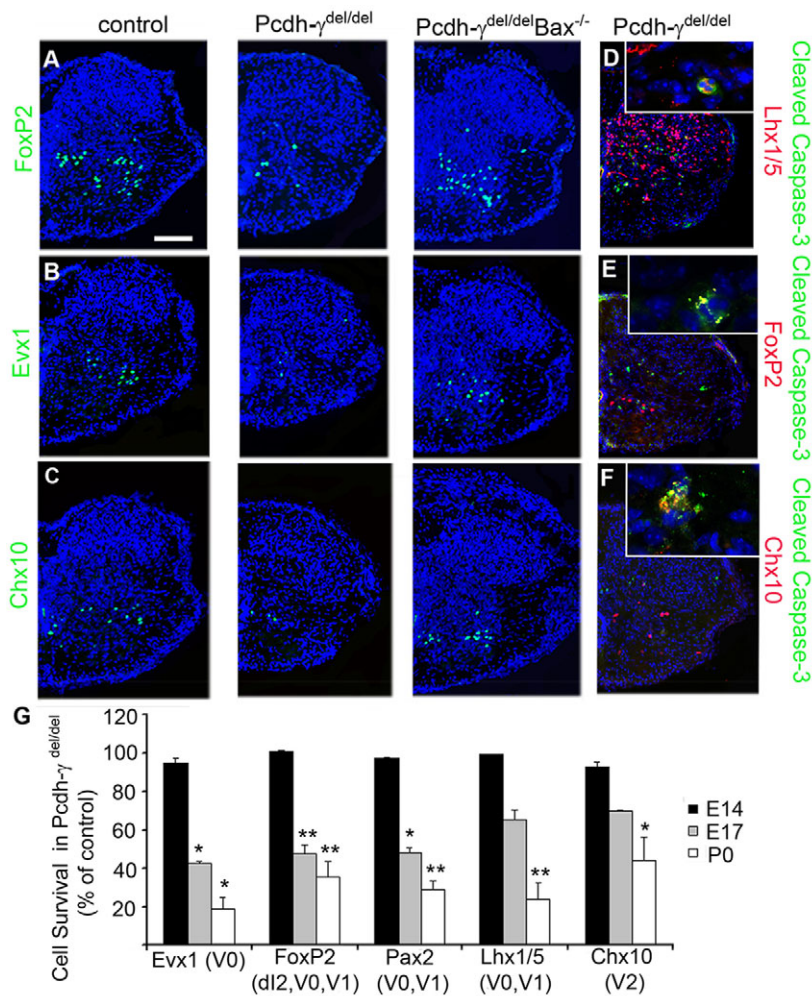


Fig. 5. Loss of spinal interneurons in *Pcdh-γ* null mutant mice is due to apoptosis, not aberrant specification. (A–C) P0 hemicords from control, *Pcdh-γ*^{del/del} and *Pcdh-γ*^{del/del}; *Bax*^{-/-} mice immunostained as indicated. The reductions in ventral populations observed in *Pcdh-γ*^{del/del} mutants are rescued in the *Pcdh-γ*^{del/del}; *Bax*^{-/-} double mutants, confirming that they are due to increased apoptosis. (D–F) Fragmented ventral interneurons in P0 *Pcdh-γ*^{del/del} spinal cord can be double-labeled (insets) with antibodies against cleaved caspase 3, a marker of apoptotic cells. (G) Quantitative analysis of ventral interneuron populations at E14, E17 and P0 demonstrates that a normal number of postmitotic interneurons are produced in *Pcdh-γ*^{del/del} embryos, but that many are lost between E14 and E17, coincident with the initial period of synaptogenesis; further loss is apparent by P0. Scale bar: 100 μm.

possibility that γ -Pcdh-dependent synaptogenesis helps control interneuron survival. The onset of interneuron apoptosis is coincident with the first wave of synaptogenesis in the rodent spinal cord (May and Biscoe, 1973; May and Biscoe, 1975; Vaughn and Grieshaber, 1973; Vaughn, 1989), which, like the pattern of interneuron apoptosis we describe (Fig. 6), generally proceeds in a ventral-to-dorsal temporal gradient (Vaughn and Grieshaber, 1973; Weber and Stelzner, 1980; Gingras and Cabana, 1999). Because immunostaining for transcription factor markers only labels cell nuclei, it is, unfortunately, not possible to directly show that synapse loss leads to apoptosis in individual *Pcdh-γ* mutant interneurons belonging to distinct populations. Examination of the spatial pattern of synapse loss in *Pcdh-γ*^{del/del}; *Bax*^{-/-} double mutants, however, did show that significant reductions in both excitatory and inhibitory synaptic puncta density occur only in the ventral horn at P0 (see Fig. S2 in the supplementary material), an age at which interneuron apoptosis is also primarily seen ventrally in both WT (Fig. 6A,B) and *Pcdh-γ*^{del/del} (Fig. 3; Fig. 7F) mice.

Pcdh-γ*^{fcon3}, a new conditional mutant allele of *Pcdh-γ

The few genetic manipulations that have been reported to influence spinal interneuron apoptosis, such as knockout of *Shh* (Borycki et al., 1999) or of *Lhx1* (Gross et al., 2002), do so early in development and appear to result from aberrant cell fate

specification. By contrast, the apoptosis we observe in *Pcdh-γ*^{del/del} mutants occurs later, after the normal specification of interneuron populations. Given that γ -Pcdhs are putative adhesion molecules, we reasoned that restricted *Pcdh-γ* mutation in a given spinal interneuron subset might affect not only the mutant neurons, but also their neighbors and synaptic partners. To pursue this question, we created and characterized a new conditional mutant allele, which we term *Pcdh-γ*^{fcon3}.

In this allele, loxP sites flank constant exon 3, which is fused in frame to *GFP* (see Fig. S3A in the supplementary material). The GFP tag allows γ -Pcdh proteins to be detected using antibodies against GFP, and Cre-mediated deletion of the floxed exon to be confirmed by loss of GFP immunoreactivity. Because transcripts encoding all 22 γ -Pcdh variable exons include the three constant exons, and because deletion of the floxed exon 3-GFP fusion is expected to remove signals for polyadenylation, we asked whether Cre-mediated recombination of *Pcdh-γ*^{fcon3} would result not only in the expected 74-amino acid C-terminal truncation, but in a hypomorphic or null allele. To test this, we crossed *Pcdh-γ*^{fcon3} mice to a line expressing Cre under the ubiquitous β -actin promoter (Lewandoski et al., 1997).

Actin-Cre; *Pcdh-γ*^{fcon3/fcon3} mutants were recovered at birth, but none survived past P0. Western blotting using an antiserum raised against the entire γ -Pcdh constant domain, but affinity purified against constant exons 1 and 2 only (Phillips et al., 2003), did not detect any γ -Pcdh proteins, either full-length or truncated, in *Actin-*

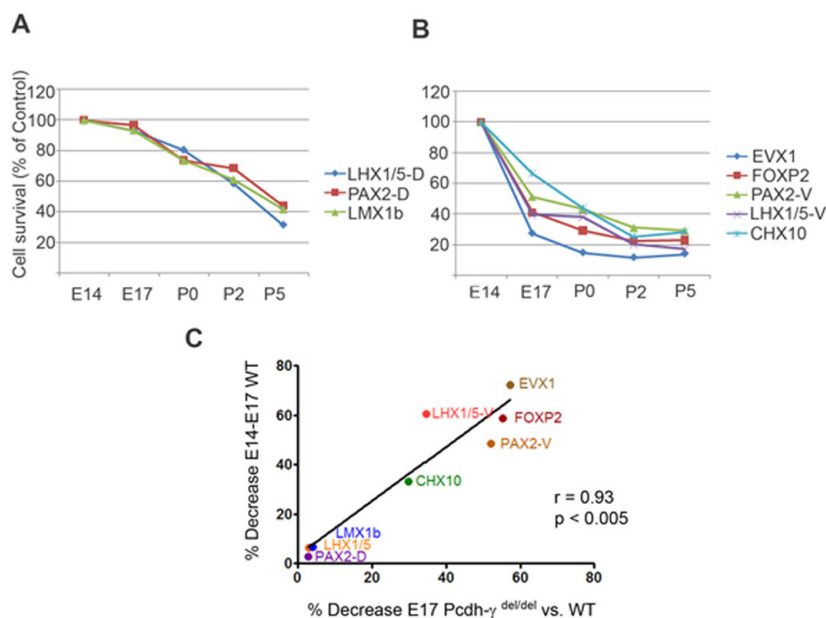


Fig. 6. Spinal interneurons undergo a normal developmental pattern of apoptosis that proceeds in a ventral-to-dorsal temporal gradient. (A-C) Multiple molecularly defined interneuron populations were quantified in wild-type (WT) mouse spinal cords at E14, E17, P0, P2 and P5 (at least six sections per marker per animal, three sets of animals). Means are graphed in A and B as a percentage of population size at E14. Ventral interneuron populations are lost, to differing extents, primarily between E14 and P0 (B), whereas dorsal interneuron populations are lost primarily after P0 (A). The increased apoptosis observed in *Pcdh-γ* null mutant mice is likely to reflect an exacerbation of this normal pattern, as there is a near-perfect correlation between the extent of cell loss in each population during WT development (y-axis in C) and the extent to which apoptosis is increased in that population in mutants as compared with controls (x-axis in C).

Cre; Pcdh-γ^{fcon3/fcon3} brain (see Fig. S3B in the supplementary material). Using RT-PCR of RNA from mutant brains, we were able to amplify spliced transcripts containing constant exons 1 and 2, but not exon 3 (see Fig. S3C in the supplementary material). Transcripts containing variable exons spliced to constant exons 1 and 2 were reduced in *Actin-Cre; Pcdh-γ^{fcon3/fcon3}* brain (see Fig. S3C in the supplementary material); quantitative real-time PCR indicated that these transcripts were present at ~25% of control levels (data not shown). These data suggest that Cre-mediated excision of the *Pcdh-γ^{fcon3}* allele results in reduced transcript stability and severely hypomorphic levels of γ -Pcdh proteins. In the absence of antibodies specific for γ -Pcdh variable domains, we cannot exclude the possibility that transmembrane proteins lacking the constant domain are produced from the *Pcdh-γ^{fcon3}* allele. Regardless, analysis of P0 spinal cords demonstrated that ubiquitous homozygous deletion of the *Pcdh-γ^{fcon3}* allele precisely phenocopied *Pcdh-γ^{del/del}* mutants (see Fig. S3D,E in the supplementary material), confirming that excision of the *Pcdh-γ^{fcon3}* allele severely impairs γ -Pcdh expression and function.

Mutation of the *Pcdh-γ* locus in restricted interneuron populations reveals that apoptosis is non-cell-autonomous

To recombine the *Pcdh-γ^{fcon3}* allele in restricted interneuron populations, we initially utilized two previously characterized Cre transgenic lines: *Wnt1-Cre* (Danielian et al., 1998) and *Pax2-Cre* (Ohyama and Groves, 2004). We first confirmed that these lines expressed Cre and deleted the *Pcdh-γ^{fcon3}* floxed exon 3-GFP fusion in the expected interneuron populations. In E12 *Wnt1-Cre; Pcdh-γ^{fcon3/fcon3}* spinal cords, Cre was expressed and GFP lost throughout the superficial dorsal horn, in patches of the deeper dorsal horn, and in a small group of cells at the bottom of the ventral horn (see Fig. S4A in the supplementary material) that expressed the V3 marker *Nkx2.2* (data not shown). Staining for γ -Pcdh-GFP fusion proteins in P0 *Wnt1-Cre; Pcdh-γ^{fcon3/fcon3}* spinal cords confirmed Cre-mediated excision throughout the dorsal horn, with most of the ventral horn being spared (see Fig. S4D in the supplementary material). Immunostaining of *Pax2-Cre; Pcdh-γ^{fcon3/+}* spinal cords at E11 demonstrated that Cre was faithfully

expressed by nearly all Pax2-positive neurons; importantly, no Cre-positive Pax2-negative cells were observed (see Fig. S4E in the supplementary material).

We first focused on the dI2-derived interneurons that are derived from within the *Wnt1* domain, express FoxP2 but not Pax2, and migrate into the ventral horn (Fig. 4; see Fig. S4 in the supplementary material). Approximately half of these dI2 neurons undergo apoptosis in *Pcdh-γ^{del/del}* (Figs 3 and 4) and *Actin-Cre; Pcdh-γ^{fcon3/fcon3}* mice (see Fig. S3E in the supplementary material), in which all spinal cord cells are mutant. In *Wnt1-Cre; Pcdh-γ^{fcon3/fcon3}* neonates, the dI2 FoxP2-positive neurons are mutant (see Fig. S4B,C in the supplementary material), but the ventral horn into which they migrate is not (see Fig. S4D in the supplementary material). In this situation, FoxP2-positive Pax2-negative neurons were present in normal numbers, as were other ventral interneuron populations (Fig. 8A,C). The converse situation occurs in *Pax2-Cre; Pcdh-γ^{fcon3/fcon3}* neonates, in which the dI2 FoxP2-positive neurons are not mutant, as they never express Pax2 (Fig. 4B and data not shown), but many neurons (~20%) surrounding their final position within the ventral horn are. In this case, FoxP2-positive Pax2-negative neurons were reduced by ~30% compared with controls (Fig. 8B,C). A second Pax2-negative interneuron population – those cells that are Pax2-negative En1-positive – was also significantly reduced in number (Fig. 8C).

Together, these results indicate that disruption of γ -Pcdh function can affect spinal interneuron survival non-cell-autonomously: mutant neurons can survive provided that they are surrounded by normal neurons, and, conversely, normal neurons can undergo apoptosis if they are surrounded by mutant neurons. To confirm this, we utilized a third transgenic line, *Hb9-Cre* (Umemori et al., 2004), to restrict *Pcdh-γ^{fcon3}* deletion to motoneurons (see Fig. S4F in the supplementary material). Because motoneurons survive normally in *Pcdh-γ^{del/del}* (Figs 2-4) and *Actin-Cre; Pcdh-γ^{fcon3/fcon3}* (see Fig. S3 in the supplementary material) mutants, any interneuron apoptosis in *Hb9-Cre; Pcdh-γ^{fcon3/fcon3}* spinal cords would present a clear case in which a mutant neuron can survive and yet surrounding normal neurons can be affected non-cell-autonomously. In *Hb9-Cre; Pcdh-γ^{fcon3/fcon3}* neonates, FoxP2-positive Pax2-negative neurons were indeed significantly reduced in number, as were Pax2-positive En1-negative neurons (Fig. 8C).

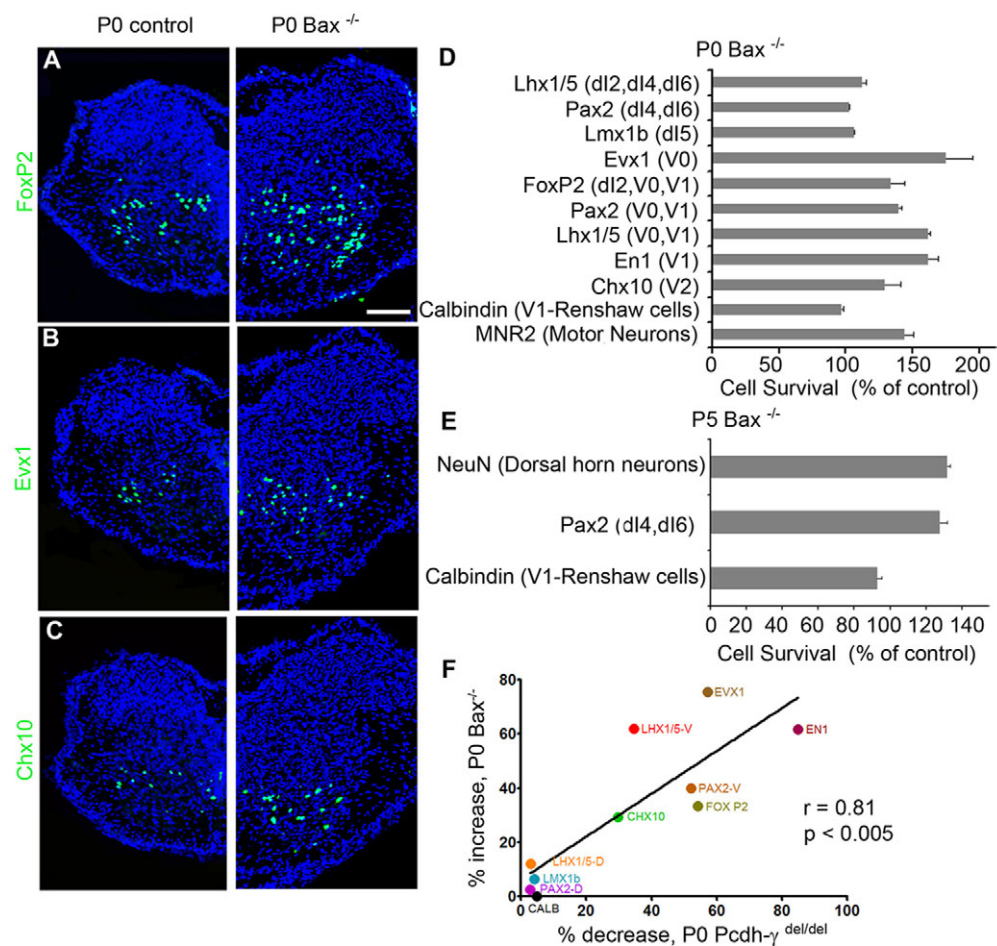


Fig. 7. Analysis of *Bax*^{-/-} mice confirms that spinal interneuron apoptosis in *Pcdh-γ* mutant mice represents an exacerbation of an underlying normal developmental pattern.

(A-C) P0 hemicords from control and *Bax*^{-/-} mice immunostained as indicated. (D) Quantification demonstrates that the sizes of these and other ventral interneuron populations (but not dorsal populations) are increased in the *Bax*^{-/-} spinal cord at P0, indicating that they undergo a normal period of developmental apoptosis. (E) Quantification of dorsal horn interneurons in P5 *Bax*^{-/-} spinal cords confirms that they do undergo a normal period of developmental apoptosis, but only after birth. (F) The increased apoptosis observed in *Pcdh-γ* null mutants represents an exacerbation of an underlying developmental pattern, as the percentage decrease in each interneuron population correlates strongly with its percentage increase in *Bax*^{-/-} neonates. Scale bar: 100 μm.

DISCUSSION

Enormous progress has been made in elucidating the genetic program that controls the specification and differentiation of neuronal populations in the developing vertebrate spinal cord (reviewed by Goulding et al., 2002; Goulding and Pfaff, 2005; Helms and Johnson, 2003; Lee and Jessell, 1999; Lewis, 2006; Tanabe and Jessell, 1996). The patterns of transcription factor expression that define spinal interneuron populations are well-described, and roles for many of these transcription factors in the specification of spinal interneurons have been established through the use of gene knockout mice (Gross et al., 2002; Helms et al., 2005; Kriks et al., 2005; Mizuguchi et al., 2006; Moran-Rivard et al., 2001; Pierani et al., 2001; Pillai et al., 2007; Sapir et al., 2004). Because many of the transcription factors that mark spinal interneuron populations are expressed only during a restricted embryonic period, it has been more difficult to determine the patterns of connectivity and physiological function attained by these populations as the spinal cord matures. Recent studies in which discrete spinal interneuron populations are permanently labeled by use of cell type-specific *Cre* and *lacZ* reporter mouse lines have begun to bridge this conceptual gap (Alvarez et al., 2005; Sapir et al., 2004). Clearly, the identification of molecules that control the connectivity and survival of spinal interneuron populations will be important for a complete understanding of how early patterns of cell type specification relate to the distinct roles these populations play in the mature spinal cord.

Here, we have presented data indicating that spinal interneuron populations undergo a period of differential developmental apoptosis that proceeds in a ventral-to-dorsal temporal gradient. We have shown that the excessive apoptosis observed in *Pcdh-γ* mutant mice reflects an exacerbation of this underlying WT pattern, and have implicated the γ -Pcdhs in non-cell-autonomous mechanisms influencing neuronal survival. We further show that ventral interneurons undergo apoptosis in the late embryonic period, followed by apoptosis of dorsal interneurons in the first few postnatal days. This ventral-to-dorsal progression parallels those previously observed for TUNEL staining in rat (Lawson et al., 1997), for spinal cord neurogenesis (Nornes and Carry, 1978) and for synaptogenesis (Vaughn and Grieshaber, 1973; Vaughn, 1989; Gingras and Cabana, 1999). Our extensive quantitative analysis demonstrates, for the first time, that the degree of developmental apoptosis can vary greatly among the many molecularly identified interneuron populations. Such differential apoptosis presumably provides a mechanism by which neuronal numbers optimal for the establishment of spinal circuitry can be obtained.

What are the mechanisms by which the γ -Pcdhs might control interneuron survival? Our data seem inconsistent with one possibility, which is that γ -Pcdhs, either in addition to or instead of their presumed function as adhesion molecules, act as receptors or co-receptors for a trophic factor; if this were true, we would expect γ -Pcdh disruption to affect apoptosis in a strictly cell-autonomous fashion. As is known to be the case for many neurons, spinal interneuron survival during the perinatal period

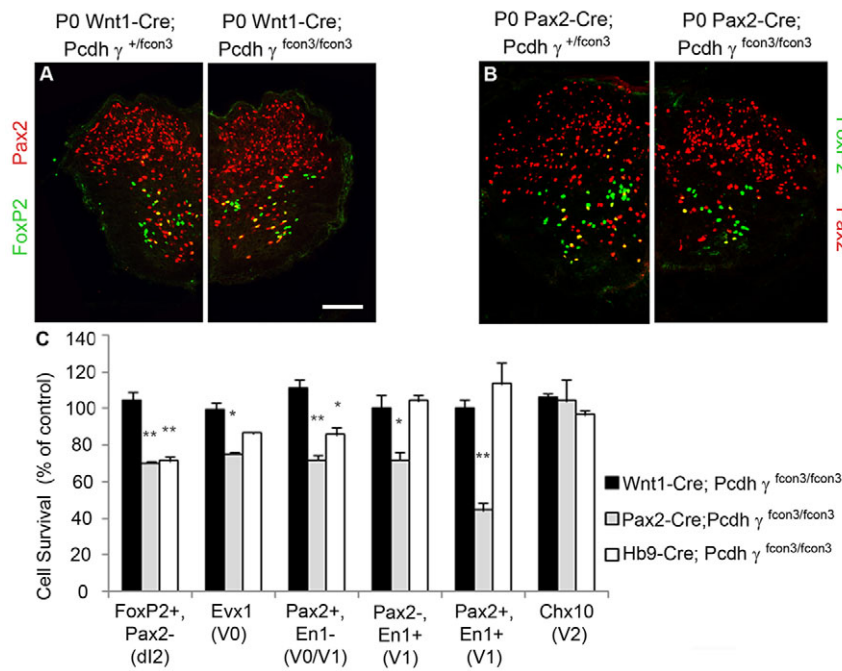


Fig. 8. Cell type-restricted *Pcdh*- γ mutation reveals a non-cell-autonomous requirement of γ -Pcdh function for neuronal survival.

(A, B) FoxP2-positive Pax2-negative dl2 interneurons were quantified in both *Wnt1-Cre; Pcdh*- $\gamma^{fcon3/fcon3}$ mice, in which they are mutant, and in *Pax2-Cre; Pcdh*- $\gamma^{fcon3/fcon3}$ mice, in which they are not, at P0. There is no reduction in this population in *Wnt1-Cre; Pcdh*- $\gamma^{fcon3/fcon3}$ mice (A, see C), but a loss of ~30% is observed in *Pax2-Cre; Pcdh*- $\gamma^{fcon3/fcon3}$ mice compared with controls (B, see C). (C) Quantitative analysis of ventral interneuron populations in *Wnt1-Cre; Pcdh*- $\gamma^{fcon3/fcon3}$, *Pax2-Cre; Pcdh*- $\gamma^{fcon3/fcon3}$ and *Hb9-Cre; Pcdh*- $\gamma^{fcon3/fcon3}$ spinal cord at P0. Data for mutants are expressed as a percentage of control values. * $P < 0.05$; ** $P < 0.01$. Scale bar: 100 μ m.

might be controlled by the formation and maturation of synaptic connections. Under this scenario, if the number of synapses made by an interneuron, or the activity at those synapses, falls below a certain level, that neuron becomes susceptible to apoptosis. In *Pcdh*- γ null spinal cord, the formation and maturation of interneuron synapses is disrupted (Wang et al., 2002b), even when apoptosis is blocked by the additional deletion of the *Bax* gene (Weiner et al., 2005) (see Fig. S2 in the supplementary material). One interpretation of our experiments using cell type-restricted *Pcdh*- γ mutants is that the likelihood that any given interneuron will die increases as more and more of its synaptic partners (either interneurons or motoneurons) are mutant, presumably owing to reductions in γ -Pcdh-dependent synaptogenesis. The increased level of apoptosis of each spinal interneuron population in *Pcdh*- γ null mutants is strictly proportional to its normal developmental level (Figs 6 and 7), and expression of the γ -Pcdh family is ubiquitous in the spinal cord (Fig. 1). Thus, it might be that the γ -Pcdhs function generally to promote survival in all spinal interneurons, but that each interneuron population differs in the threshold of synaptic activity, or in other trophic signals, that they require for survival. Interestingly, concurrent studies using the *Pcdh*- γ^{fcon3} line (Lefebvre et al., 2008) indicate that the γ -Pcdhs are also required for interneuron survival in the postnatal retina. In this case, however, increased apoptosis of retinal interneurons does not seem to result from synapse loss, suggesting that the γ -Pcdhs can influence interneuron survival by multiple mechanisms.

Our analysis of *Pax2-Cre; Pcdh*- $\gamma^{fcon3/fcon3}$ spinal cords, in which some non-mutant ventral interneurons die whereas others do not, demonstrates that interneuron survival during embryonic development can be controlled non-cell-autonomously by other interneurons, whether via synaptic connections or by other mechanisms. Consistent with this, descending inputs, such as those from the corticospinal tract, do not mature until after birth in rodents (Donatelle, 1977; Gilbert and Stelzner, 1979; Gribnau et al., 1986). Although DRG sensory afferent terminals do form during late embryogenesis (Snider et al., 1992; Ozaki and Snider, 1997) and

may control spinal interneuron survival to some extent (Oliveira et al., 2002), we found no increase in interneuron apoptosis in *Wnt1-Cre; Pcdh*- $\gamma^{fcon3/fcon3}$ neonates, in which all DRG neurons are mutant (Fig. 8). Some ventral interneurons, including a subset of Pax2-positive cells, are lost non-cell-autonomously in *Hb9-Cre; Pcdh*- $\gamma^{fcon3/fcon3}$ neonates (Fig. 8), in which many motoneurons are mutant (see Fig. S4 in the supplementary material). This is consistent with the results of Béchade et al. (Béchade et al., 2002), which suggested that motoneuron-derived neurotrophin 3 is required for the survival of Pax2-expressing interneurons in embryonic spinal cord explants. The signaling pathways in which the γ -Pcdhs participate are, at present, almost entirely unknown. It will be interesting in future studies to examine whether disruption of γ -Pcdh function can affect either the release of trophic factors or the regulation of apoptotic signaling proteins, such as the Bcl2 family.

Although the γ -Pcdhs clearly affect the formation and/or maturation of interneuron synapses (Weiner et al., 2005), it is far from clear whether they do so by acting solely, or even primarily, as synaptic adhesion molecules. In immunostaining studies, γ -Pcdh family members are detected at only a fraction (perhaps 25–40%) of CNS synapses (Phillips et al., 2003; Wang et al., 2002b), and only a fraction of γ -Pcdh protein is synaptic. Immunogold electron microscopy has shown that some neuronal γ -Pcdh protein is contained in tubulovesicular structures within axon terminals and dendritic branches (Phillips et al., 2003), which might represent a ‘reserve pool’ that can be inserted at the plasma membrane to stabilize nascent contacts during synapse maturation (Jontes and Phillips, 2006). If this is true, then disruption of γ -Pcdhs in developing interneurons might cause synapses to be unstable or otherwise immature, leading to their subsequent loss. However, even in the adult CNS, many synapses do not appear to accumulate significant amounts of γ -Pcdh protein (Wang et al., 2002b; Phillips et al., 2003) (and data not shown), and localization to non-synaptic regions of dendrites and axons remains extensive. Although at least some individual γ -Pcdh family members appear to interact homophilically when expressed in cell lines (Frank et al., 2005; Obata et al., 1995; Sano et al., 1993) [but see Morishita and Yagi

(Morishita and Yagi, 2007)], it is still unclear whether γ -Pcdhs primarily mediate cell-cell adhesion in neurons, and heterophilic interactions between γ -Pcdh family members or with other proteins have not been examined.

If all synapses do depend on homophilic adhesion between γ -Pcdhs, then a mutant interneuron would be expected to lose all inputs and undergo apoptosis cell-autonomously, which our analysis suggests is not the case. If, however, only ~25% of interneuron synapses depend on the γ -Pcdhs (as suggested by their localization), then we might expect what we have observed in the present study: a mutant neuron can survive if many of its contacting neurons are normal, and a normal neuron can undergo apoptosis if many of its contacting neurons are mutant. The activity levels within each *Pcdh- γ* mutant neuron would be reduced, and thus the greater the number of mutant neurons in a circuit, the lower the overall synaptic activation and the greater the susceptibility to apoptosis. In this way, the γ -Pcdh family could help control the density of synapses in, and thus modulate the function of, developing neuronal circuits. An important question that remains, but which we are now addressing, is whether the diversity of the γ -Pcdh family is required for normal synapse formation and interneuronal survival. If so, then the 22 individual γ -Pcdhs will greatly expand the small coterie of adhesion molecules (Shen and Bargmann, 2003; Shen et al., 2004; Shen, 2004; Yamagata et al., 2002; Yamagata et al., 2003; Yamagata and Sanes, 2008) that are currently known to mediate the exquisite specificity of synaptic patterning.

We thank Drs Samuel Pfaff, Martyn Goulding, Thomas Jessell, Andy Groves and Greg Phillips for their generous gifts of reagents, and Drs Jack Lilien, Steven Green, Joshua Sanes and members of the Weiner laboratory for helpful comments. This work was supported by grants from the Edward Mallinckrodt, Jr Foundation and from the NIH (R01 NS055272) to J.A.W.

Supplementary material

Supplementary material for this article is available at <http://dev.biologists.org/cgi/content/full/135/24/4153/DC1>

References

- Allendoerfer, K. L. and Shatz, C. J. (1994). The subplate, a transient neocortical structure: its role in the development of connections between thalamus and cortex. *Annu. Rev. Neurosci.* **17**, 185-218.
- Alvarez, F. J., Jonas, P. C., Sapir, T., Hartley, R., Berrocal, M. C., Geiman, E. J., Todd, A. J. and Goulding, M. (2005). Postnatal phenotype and localization of spinal cord V1 derived interneurons. *J. Comp. Neurol.* **493**, 177-192.
- Béchéade, C., Mallecourt, C., Sedel, F., Vyas, S. and Triller, A. (2002). Motoneuron-derived Neurotrophin-3 is a survival factor for PAX2-expressing spinal interneurons. *J. Neurosci.* **22**, 8779-8784.
- Ben-Arie, N., Hassan, B. A., Bermingham, N. A., Malicki, D. M., Armstrong, D., Matzuk, M., Bellen, H. J. and Zoghbi, H. Y. (2000). Functional conservation of Atonal and Math1 in the CNS and PNS. *Development* **127**, 1039-1048.
- Blaschke, A. J., Staley, K. and Chun, J. (1996). Widespread programmed cell death in proliferative and postmitotic regions of the fetal cerebral cortex. *Development* **122**, 1165-1174.
- Blaschke, A. J., Weiner, J. A. and Chun, J. (1998). Programmed cell death is a universal feature of embryonic and postnatal neuroproliferative regions throughout the central nervous system. *J. Comp. Neurol.* **396**, 39-50.
- Borycki, A. G., Brunk, B., Tajbakhsh, S., Buckingham, M., Chiang, C. and Emerson, C. P., Jr (1999). Sonic Hedgehog controls epaxial muscle determination through Myf5 activation. *Development* **126**, 4053-4063.
- Buss, R. R. and Oppenheim, R. W. (2004). Role of programmed cell death in normal neuronal development and function. *Anat. Sci. Int.* **79**, 191-197.
- Buss, R. R., Sun, W. and Oppenheim, R. W. (2006). Adaptive roles of programmed cell death during nervous system development. *Annu. Rev. Neurosci.* **29**, 1-35.
- Cheng, L., Samad, O. A., Xu, Y., Mizuguchi, R., Luo, P., Shirasawa, S., Goulding, M. and Ma, Q. (2005). Lbx1 and Tlx3 are opposing switches in determining GABAergic versus glutamatergic transmitter phenotypes. *Nat. Neurosci.* **8**, 1510-1515.
- Danielian, P. S., Muccino, D., Rowitch, D. H., Michael, S. K. and McMahon, A. P. (1998). Modification of gene activity in mouse embryos in utero by a Tamoxifen-inducible form of cre recombinase. *Curr. Biol.* **8**, 1323-1326.
- Deckwerth, T. L., Elliott, J. L., Knudson, C. M., Johnson, E. M., Jr, Snider, W. D. and Korsmeyer, S. J. (1996). BAX is required for neuronal death after trophic factor deprivation and during development. *Neuron* **17**, 401-411.
- Donatelle, J. M. (1977). Growth of the corticospinal tract and the development of placing reactions in the postnatal rat. *J. Comp. Neurol.* **175**, 207-231.
- Frank, M., Ebert, M., Shan, W., Phillips, G. R., Arndt, K., Colman, D. R. and Kemler, R. (2005). Differential expression of individual gamma-protocadherins during mouse brain development. *Mol. Cell. Neurosci.* **29**, 603-616.
- Geiman, E., Gray, P. A. and Goulding, M. (2007). FoxP2 and MafB subdivide ventral interneuron populations in the developing spinal cord. *Soc. Neurosci. Abstr.* **670.2**.
- Gilbert, M. and Stelzner, D. J. (1979). The development of descending and dorsal root connections in the lumbosacral spinal cord of the postnatal rat. *J. Comp. Neurol.* **184**, 821-838.
- Gingras, J. and Cabana, T. (1999). Synaptogenesis in the brachial and lumbosacral enlargements of the spinal cord in the postnatal opossum, *Monodelphis domestica*. *J. Comp. Neurol.* **414**, 551-560.
- Gosgnach, S., Lanuza, G. M., Butt, S. J., Saueressig, H., Zhang, Y., Velasquez, T., Riethmacher, D., Callaway, E. M., Kiehn, O. and Goulding, M. (2006). V1 spinal neurons regulate the speed of vertebrate locomotor outputs. *Nature* **440**, 215-219.
- Goulding, M. and Pfaff, S. L. (2005). Development of circuits that generate simple rhythmic behaviors in vertebrates. *Curr. Opin. Neurobiol.* **15**, 14-20.
- Goulding, M., Lanuza, G., Sapir, T. and Narayan, S. (2002). The formation of sensorimotor circuits. *Curr. Opin. Neurobiol.* **12**, 508-515.
- Gowan, K., Helms, A. W., Hunsaker, T. L., Collisson, T., Ebert, P. J., Odom, R. and Johnson, J. E. (2001). Crossinhibitory activities of Ngn1 and Math1 allow specification of distinct dorsal interneurons. *Neuron* **31**, 219-232.
- Gribnau, A. A., de Kort, E. J., Dederen, P. J. and Nieuwenhuys, R. (1986). On the development of the pyramidal tract in the rat. II. An anterograde tracer study of the outgrowth of the corticospinal fibers. *Anat. Embryol.* **175**, 101-110.
- Grieshammer, U., Lewandoski, M., Prevette, D., Oppenheim, R. W. and Martin, G. R. (1998). Muscle-specific cell ablation conditional upon cre-mediated DNA recombination in transgenic mice leads to massive spinal and cranial motoneuron loss. *Dev. Biol.* **197**, 234-247.
- Gross, M. K., Dottori, M. and Goulding, M. (2002). Lbx1 specifies somatosensory association interneurons in the dorsal spinal cord. *Neuron* **34**, 535-549.
- Helms, A. W. and Johnson, J. E. (1998). Progenitors of dorsal commissural interneurons are defined by MATH1 expression. *Development* **125**, 919-928.
- Helms, A. W. and Johnson, J. E. (2003). Specification of dorsal spinal cord interneurons. *Curr. Opin. Neurobiol.* **13**, 42-49.
- Helms, A. W., Battiste, J., Henke, R. M., Nakada, Y., Simplicio, N., Guillemot, F. and Johnson, J. E. (2005). Sequential roles for Mash1 and Ngn2 in the generation of dorsal spinal cord interneurons. *Development* **132**, 2709-2719.
- Hochman, S. (2007). Spinal cord. *Curr. Biol.* **17**, R950-R955.
- Homma, S., Yaginuma, H. and Oppenheim, R. W. (1994). Programmed cell death during the earliest stages of spinal cord development in the chick embryo: a possible means of early phenotypic selection. *J. Comp. Neurol.* **345**, 377-395.
- Jontes, J. D. and Phillips, G. R. (2006). Selective stabilization and synaptic specificity: a new cell-biological model. *Trends Neurosci.* **29**, 186-191.
- Kablar, B. and Rudnicki, M. A. (1999). Development in the absence of skeletal muscle results in the sequential ablation of motor neurons from the spinal cord to the brain. *Dev. Biol.* **208**, 93-109.
- Knudson, C. M., Tung, K. S., Tourtellotte, W. G., Brown, G. A. and Korsmeyer, S. J. (1995). Bax-Deficient mice with lymphoid hyperplasia and male germ cell death. *Science* **270**, 96-99.
- Kriks, S., Lanuza, G. M., Mizuguchi, R., Nakafuku, M. and Goulding, M. (2005). Gsh2 is required for the repression of Ngn1 and specification of dorsal interneuron fate in the spinal cord. *Development* **132**, 2991-3002.
- Kuida, K., Zheng, T. S., Na, S., Kuan, C., Yang, D., Karasuyama, H., Rakic, P. and Flavell, R. A. (1996). Decreased apoptosis in the brain and premature lethality in CPP32-deficient mice. *Nature* **384**, 368-372.
- Kuida, K., Haydar, T. F., Kuan, C. Y., Gu, Y., Taya, C., Karasuyama, H., Su, M. S., Rakic, P. and Flavell, R. A. (1998). Reduced apoptosis and cytochrome c-mediated caspase activation in mice lacking caspase 9. *Cell* **94**, 325-337.
- Lawson, S. J. and Lowrie, M. B. (1998). The role of apoptosis and excitotoxicity in the death of spinal motoneurons and interneurons after neonatal nerve injury. *Neuroscience* **87**, 337-348.
- Lawson, S. J., Davies, H. J., Bennett, J. P. and Lowrie, M. B. (1997). Evidence that spinal interneurons undergo programmed cell death postnatally in the rat. *Eur. J. Neurosci.* **9**, 794-799.
- Lee, K. J. and Jessell, T. M. (1999). The specification of dorsal cell fates in the vertebrate central nervous system. *Annu. Rev. Neurosci.* **22**, 261-294.
- Lefebvre, J. L., Zhang, Y., Meister, M., Wang, X. and Sanes, J. R. (2008). γ -Protocadherins regulate neuronal survival but are dispensable for circuit formation in retina. *Development* **135**, 4141-4151.
- Lewandoski, M., Meyers, E. N. and Martin, G. R. (1997). Analysis of Fgf8 gene function in vertebrate development. *Cold Spring Harb. Symp. Quant. Biol.* **62**, 159-168.

- Lewis, K. E. (2006). How do genes regulate simple behaviours? Understanding how different neurons in the vertebrate spinal cord are genetically specified. *Philos. Trans. R. Soc. Lond. B Biol. Sci.* **361**, 45-66.
- Liem, K. F., Jr, Tremml, G. and Jessell, T. M. (1997). A role for the roof plate and its resident TGFbeta-related proteins in neuronal patterning in the dorsal spinal cord. *Cell* **91**, 127-138.
- Lowrie, M. B. and Lawson, S. J. (2000). Cell death of spinal interneurons. *Prog. Neurobiol.* **61**, 543-555.
- May, M. K. and Biscoe, T. J. (1973). Preliminary observations on synaptic development in the foetal rat spinal cord. *Brain Res.* **53**, 181-186.
- May, M. K. and Biscoe, T. J. (1975). An investigation of the foetal rat spinal cord. I. Ultrastructural observations on the onset of synaptogenesis. *Cell Tissue Res.* **158**, 241-249.
- McKay, S. E. and Oppenheim, R. W. (1991). Lack of evidence for cell death among avian spinal cord interneurons during normal development and following removal of targets and afferents. *J. Neurobiol.* **22**, 721-733.
- McLean, D. L., Fan, J., Higashijima, S., Hale, M. E. and Fetcho, J. R. (2007). A topographic map of recruitment in spinal cord. *Nature* **446**, 71-75.
- Mennerick, S. and Zorumski, C. F. (2000). Neural activity and survival in the developing nervous system. *Mol. Neurobiol.* **22**, 41-54.
- Mentis, G. Z., Siembab, V. C., Zerda, R., O'Donovan, M. J. and Alvarez, F. J. (2006). Primary afferent synapses on developing and adult rensaw cells. *J. Neurosci.* **26**, 13297-13310.
- Mizuguchi, R., Kriks, S., Cordes, R., Gossler, A., Ma, Q. and Goulding, M. (2006). *Ascl1* and *Gsh1/2* control inhibitory and excitatory cell fate in spinal sensory interneurons. *Nat. Neurosci.* **9**, 770-778.
- Moran-Rivard, L., Kagawa, T., Saueressig, H., Gross, M. K., Burrill, J. and Goulding, M. (2001). *Evx1* is a postmitotic determinant of v0 interneuron identity in the spinal cord. *Neuron* **29**, 385-399.
- Morishita, H. and Yagi, T. (2007). Protocadherin family: diversity, structure, and function. *Curr. Opin. Cell Biol.* **19**, 584-592.
- Nijhawan, D., Honarpour, N. and Wang, X. (2000). Apoptosis in neural development and disease. *Annu. Rev. Neurosci.* **23**, 73-87.
- Nornes, H. O. and Carry, M. (1978). Neurogenesis in spinal cord of mouse: an autoradiographic analysis. *Brain Res.* **159**, 1-6.
- Novak, A., Guo, C., Yang, W., Nagy, A. and Lobe, C. G. (2000). Z/EG, a double reporter mouse line that expresses enhanced green fluorescent protein upon cre-mediated excision. *Genesis* **28**, 147-155.
- Obata, S., Sago, H., Mori, N., Rochelle, J. M., Seldin, M. F., Davidson, M., St John, T., Taketani, S. and Suzuki, S. T. (1995). Protocadherin *Pcdh2* shows properties similar to, but distinct from, those of classical cadherins. *J. Cell Sci.* **108**, 3765-3773.
- Ohyama, T. and Groves, A. K. (2004). Generation of Pax2-Cre Mice by modification of a Pax2 bacterial artificial chromosome. *Genesis* **38**, 195-199.
- Oliveira, A. L., Risling, M., Deckner, M., Lindholm, T., Langone, F. and Cullheim, S. (1997). Neonatal sciatic nerve transection induces TUNEL labeling of neurons in the rat spinal cord and DRG. *NeuroReport* **8**, 2837-2840.
- Oliveira, A. L., Risling, M., Negro, A., Langone, F. and Cullheim, S. (2002). Apoptosis of spinal interneurons induced by sciatic nerve axotomy in the neonatal rat is counteracted by nerve growth factor and ciliary neurotrophic factor. *J. Comp. Neurol.* **447**, 381-393.
- Oppenheim, R. W. (1991). Cell death during development of the nervous system. *Annu. Rev. Neurosci.* **14**, 453-501.
- Ozaki, S. and Snider, W. D. (1997). Initial trajectories of sensory axons toward laminar targets in the developing mouse spinal cord. *J. Comp. Neurol.* **380**, 215-229.
- Phillips, G. R., Tanaka, H., Frank, M., Elste, A., Fidler, L., Benson, D. L. and Colman, D. R. (2003). Gamma-protocadherins are targeted to subsets of synapses and intracellular organelles in neurons. *J. Neurosci.* **23**, 5096-5104.
- Pierani, A., Moran-Rivard, L., Sunshine, M. J., Littman, D. R., Goulding, M. and Jessell, T. M. (2001). Control of interneuron fate in the developing spinal cord by the progenitor homeodomain protein *Dbx1*. *Neuron* **29**, 367-384.
- Pillai, A., Mansouri, A., Behringer, R., Westphal, H. and Goulding, M. (2007). *Lhx1* and *Lhx5* maintain the inhibitory-neurotransmitter status of interneurons in the dorsal spinal cord. *Development* **134**, 357-366.
- Sano, K., Tanihara, H., Heimark, R. L., Obata, S., Davidson, M., St John, T., Taketani, S. and Suzuki, S. (1993). Protocadherins: a large family of cadherin-related molecules in central nervous system. *EMBO J.* **12**, 2249-2256.
- Sapir, T., Geiman, E. J., Wang, Z., Velasquez, T., Mitsui, S., Yoshihara, Y., Frank, E., Alvarez, F. J. and Goulding, M. (2004). Pax6 and Engrailed 1 regulate two distinct aspects of Renshaw cell development. *J. Neurosci.* **24**, 1255-1264.
- Shen, K. (2004). Molecular mechanisms of target specificity during synapse formation. *Curr. Opin. Neurobiol.* **14**, 83-88.
- Shen, K. and Bargmann, C. I. (2003). The immunoglobulin superfamily protein *syg-1* determines the location of specific synapses in *C. elegans*. *Cell* **112**, 619-630.
- Shen, K., Fetter, R. D. and Bargmann, C. I. (2004). Synaptic specificity is generated by the synaptic guidepost protein SYG-2 and its receptor, SYG-1. *Cell* **116**, 869-881.
- Snider, W. D., Zhang, L., Yusoof, S., Gorukanti, N. and Tsering, C. (1992). Interactions between dorsal root axons and their target motor neurons in developing mammalian spinal cord. *J. Neurosci.* **12**, 3494-3508.
- Tanabe, Y. and Jessell, T. M. (1996). Diversity and pattern in the developing spinal cord. *Science* **274**, 1115-1123.
- Tasic, B., Nabholz, C. E., Baldwin, K. K., Kim, Y., Rueckert, E. H., Ribich, S. A., Cramer, P., Wu, Q., Axel, R. and Maniatis, T. (2002). Promoter choice determines splice site selection in protocadherin alpha and gamma Pre-mRNA Splicing. *Mol. Cell* **10**, 21-33.
- Umehori, H., Linhoff, M. W., Ornitz, D. M. and Sanes, J. R. (2004). FGF22 and its close relatives are presynaptic organizing molecules in the mammalian brain. *Cell* **118**, 257-270.
- Vaughn, J. E. (1989). Fine structure of synaptogenesis in the vertebrate central nervous system. *Synapse* **3**, 255-285.
- Vaughn, J. E. and Grieshaber, J. A. (1973). A morphological investigation of an early reflex pathway in developing rat spinal cord. *J. Comp. Neurol.* **148**, 177-209.
- Verhage, M., Maia, A. S., Plomp, J. J., Brussaard, A. B., Heeroma, J. H., Vermeer, H., Toonen, R. F., Hammer, R. E., van den Berg, T. K., Missler, M. et al. (2000). Synaptic assembly of the brain in the absence of neurotransmitter secretion. *Science* **287**, 864-869.
- Wang, X., Su, H. and Bradley, A. (2002a). Molecular mechanisms governing *Pcdh-gamma* gene expression: evidence for a multiple promoter and cis-alternative splicing model. *Genes Dev.* **16**, 1890-1905.
- Wang, X., Weiner, J. A., Levi, S., Craig, A. M., Bradley, A. and Sanes, J. R. (2002b). Gamma protocadherins are required for survival of spinal interneurons. *Neuron* **36**, 843-854.
- Weber, E. D. and Stelzner, D. J. (1980). Synaptogenesis in the intermediate gray region of the lumbar spinal cord in the postnatal rat. *Brain Res.* **185**, 17-37.
- Weiner, J. A. (2006). Protocadherins and synapse development. In *Molecular Mechanisms of Synaptogenesis*. New York, NY: Springer.
- Weiner, J. A., Wang, X., Tapia, J. C. and Sanes, J. R. (2005). Gamma protocadherins are required for synaptic development in the spinal cord. *Proc. Natl. Acad. Sci. USA* **102**, 8-14.
- White, F. A., Keller-Peck, C. R., Knudson, C. M., Korsmeyer, S. J. and Snider, W. D. (1998). Widespread elimination of naturally occurring neuronal death in Bax-deficient mice. *J. Neurosci.* **18**, 1428-1439.
- Wilson, J. M., Hartley, R. J., Maxwell, D. J., Todd, A. J., Lieberam, I., Kaltschmidt, J. A., Yoshida, Y., Jessell, T. M. and Brownstone, R. M. (2005). Conditional rhythmicity of ventral spinal interneurons defined by expression of the Hb9 homeodomain protein. *J. Neurosci.* **25**, 5710-5719.
- Yamagata, M. and Sanes, J. R. (2008). Dscam and sidekick proteins direct lamina-specific synaptic connections in vertebrate retina. *Nature* **451**, 465-469.
- Yamagata, M., Weiner, J. A. and Sanes, J. R. (2002). Sidekicks: synaptic adhesion molecules that promote lamina-specific connectivity in the retina. *Cell* **110**, 649-660.
- Yamagata, M., Sanes, J. R. and Weiner, J. A. (2003). Synaptic adhesion molecules. *Curr. Opin. Cell Biol.* **15**, 621-632.
- Zou, C., Huang, W., Ying, G. and Wu, Q. (2007). Sequence analysis and expression mapping of the rat clustered protocadherin gene repertoires. *Neuroscience* **144**, 579-603.