

Notch signaling augments the canonical Wnt pathway to specify the size of the otic placode

Chathurani S. Jayasena^{1,*}, Takahiro Ohyama¹, Neil Segil² and Andrew K. Groves^{2,†,‡}

The inner ear derives from a patch of ectoderm defined by expression of the transcription factor Pax2. We recently showed that this Pax2⁺ ectoderm gives rise not only to the otic placode but also to the surrounding cranial epidermis, and that Wnt signaling mediates this placode-epidermis fate decision. We now present evidence for reciprocal interactions between the Wnt and Notch signaling pathways during inner ear induction. Activation of Notch1 in Pax2⁺ ectoderm expands the placodal epithelium at the expense of cranial epidermis, whereas loss of Notch1 leads to a reduction in the size of the otic placode. We show that Wnt signaling positively regulates Notch pathway genes such as *Jag1*, *Notch1* and *Hes1*, and we have used transgenic Wnt reporter mice to show that Notch signaling can modulate the canonical Wnt pathway. Gain- and loss-of-function mutations in the Notch and Wnt pathways reveal that some aspects of otic placode development – such as Pax8 expression and the morphological thickening of the placode – can be regulated independently by either Notch or Wnt signals. Our results suggest that Wnt signaling specifies the size of the otic placode in two ways, by directly upregulating a subset of otic genes, and by positively regulating components of the Notch signaling pathway, which then act to augment Wnt signaling.

KEY WORDS: Mouse, Otic placode, Wnt, β -Catenin, Notch1, Jagged 1, Inner ear

INTRODUCTION

Inner ear development is an excellent example of how a Darwinian ‘organ of extreme perfection and complication’ can arise from simple origins. The inner ear derives from a patch of thickened ectoderm, the otic placode, lying next to the posterior hindbrain. Signals that induce the otic placode are present in the hindbrain and cranial paraxial mesoderm, although the relative contribution of these tissues to the induction process varies between species (Barald and Kelley, 2004; Groves, 2005; Riley and Phillips, 2003; Torres and Giraldez, 1998). Members of the fibroblast growth factor (FGF) family play a crucial role in inducing the otic placode in all vertebrates examined (Friesel and Brown, 1992; Ladher et al., 2005; Leger and Brand, 2002; Mackereth et al., 2005; Maroon et al., 2002; Phillips et al., 2001; Vendrell et al., 2000; Wright et al., 2004; Wright and Mansour, 2003). FGF signaling induces the expression of genes, such as Pax2 and Pax8, in a broad region of cranial ectoderm stretching from rhombomeres 3 to 6 (Maroon et al., 2002; Martin and Groves, 2006; Wright and Mansour, 2003). Evidence from lineage tracing in chick (Streit, 2002) and mouse (Ohyama and Groves, 2004b; Ohyama et al., 2006) suggest that this broad Pax2⁺ domain, which we have referred to as the ‘pre-otic field’, contains cells fated to become otic and epibranchial placodes, as well as cranial epidermis.

We recently showed that Wnt signaling plays an important role in defining the size of the otic placode within this Pax2⁺ pre-otic field. Wnt signaling is activated in a medial subset of the Pax2⁺ domain closest to the hindbrain (Ohyama et al., 2006). Inactivation of Wnt

signaling in Pax2⁺ cells by conditional deletion of the β -catenin gene (*Cttnb1*; also known as *Catnb*) leads to a large reduction in the size of the otic placode and a corresponding expansion of cranial epidermis. Conversely, activation of *Cttnb1* in Pax2⁺ cells expands the otic placode at the expense of cranial epidermis (Ohyama et al., 2006). To date, however, it is not clear how Wnt signals direct cranial ectoderm towards an otic fate. It is possible that Lef/Tcf/ β -catenin transcriptional complexes activated by Wnt signaling directly regulate otic genes. Alternatively, Wnt signals might act indirectly by upregulating short-range signals that partition cranial ectoderm into otic placode and epidermis.

There is growing evidence that Wnt and Notch signaling pathways co-operate during cell fate determination in many tissues (Crosnier et al., 2006; Estrach et al., 2006; Fre et al., 2005). Notch signaling plays various roles in patterning the inner ear, ranging from specification of neurons and prosensory patches to the generation of the stereotypical pattern of mechanosensory hair cells and supporting cells (Adam et al., 1998; Brooker et al., 2006; Daudet et al., 2007; Daudet and Lewis, 2005; Haddon et al., 1998; Kiernan et al., 2005; Lanford et al., 1999; Shi et al., 2005). Both the *Notch1* receptor and several of its ligands, such as jagged 1 (*Jag1*) and delta-like 1 (*Dll1*), are expressed in the otic placode from very early stages (Abello et al., 2007; Adam et al., 1998; Daudet et al., 2007; Groves and Bronner-Fraser, 2000; Haddon et al., 1998). Notch signaling might therefore also have an early function during otic placode development. We now provide evidence that elements of the Notch pathway are positively regulated by Wnt signaling, and that Notch1 signaling can in turn modulate the canonical Wnt signaling pathway. We also show that while some aspects of otic placode identity are regulated only by Wnt signals, other features of placodal differentiation can be regulated independently by Wnt or Notch pathways.

MATERIALS AND METHODS

Genetically modified mice

The following lines of mice were used in this study: Pax2-Cre (Ohyama and Groves, 2004b) (available from the Mutant Mouse Regional Resource Center; www.mmrc.org/strains/10569/010569.html); conditionally

¹Gonda Department of Cell and Molecular Biology, House Ear Institute, 2100 West 3rd Street, Los Angeles, CA 90057, USA. ²Department of Cell and Neurobiology, Keck School of Medicine, University of Southern California, Los Angeles, CA 90033, USA.

*Present address: Division of Biology, 139-74, California Institute of Technology, Pasadena, CA 91125, USA

[†]Present address: Department of Molecular and Human Genetics, and Department of Neuroscience, Baylor College of Medicine, Houston, TX 77030, USA

[‡]Author for correspondence (e-mail: akgroves@bcm.edu)

activated Notch1 intracellular domain [*cNIICD* (Murtaugh et al., 2003)]; *Notch1*-null mutants (Conlon et al., 1995); conditionally activated β -catenin *Catnb^{lox(ex3)}* [*cAct* (Harada et al., 1999)]; conditional β -catenin^{flxed} mutants [*β -cat-CKO* (Brault et al., 2001)]; Tcf/Lef Wnt reporter (Mohamed et al., 2004); conditional *Rbpj/Rbsuh* mutants (Tanigaki et al., 2002); and a GFP-expressing Cre reporter [*Z/EG* (Novak et al., 2000)]. To generate *cNIICD* animals, *NIICD^{flxed}* homozygotes were crossed with *Pax2-Cre* animals. Age-matched heterozygotes and wild types were used as controls for *Notch1* mutant embryos. Detailed mating strategies for *cAct* and *β -cat-CKO* mice have been described previously (Ohyama et al., 2006). To generate *Notch1*; *cAct* mutants, a line that was heterozygous for *Notch1*; *Pax2-Cre* was crossed to animals that were heterozygous for *Notch1*; *cAct*. To generate *cNIICD*; *β -cat-CKO* mutants, a line that was heterozygous for *β -cat-null*; *Pax2-Cre* was crossed to animals that were heterozygous for *NIICD* and homozygous for a floxed allele of β -catenin. For each mutant genotype, at least three embryos were analyzed, except for *Notch1*; *cAct* mutants (*n*=2). All animal experiments were done in accordance with the guidelines of the institution's Animal Care and Use Committee.

Whole-mount in situ hybridization, immunostaining and detection of β -galactosidase

Whole-mount in situ hybridization was performed as previously described (Ohyama et al., 2006). The following probes were used: *Notch1* (Jeffrey Nye), *Dll1* (Achim Gossler), *Jag1* (Tim Mitsiadu), *Hes1* and *Hes5* (Ryoichiro Kageyama), lunatic fringe (*Lfng*; Thomas Vogt) and *Wnt6* (Andrew McMahon). Probes for *Pax2*, *Pax8*, *Foxi2*, *Dlx5*, *Krox20*, *Hoxb1*, *Fgf3*, and *Epha4* have been previously described (Ohyama et al., 2006). Embryos were embedded in 15% sucrose and 7% gelatin in phosphate-buffered saline (PBS), as previously described (Groves and Bronner-Fraser, 2000), and 15- to 30- μ m thick sections cut using a Leica CM 1850 cryostat. Immunostaining and detection of β -galactosidase on cryostat sections and embryos was performed as previously described (Ohyama et al., 2006). The following primary antibodies were used: β -catenin (Zymed) at 1:200; activated Caspase-3 (R&D Systems) at 1:1000; green fluorescent protein (GFP) conjugated to fluorescein (Abcam) at 1:250 to 1:500; β -galactosidase (ICN/MP Biochemicals) at 1:100; jagged 1 (*Jag1*; Santa Cruz) at 1:50 to 1:100; *Pax2* (Zymed) at 1:500; and phospho-histone-H3 (PH3; Upstate/Millipore) at 1:1000. Secondary goat anti-rabbit antibody conjugated to Alexa 594 (Molecular Probes) was used at 1:200. Sections were counterstained with the nuclear marker DAPI (Molecular Probes). All images were captured using a Zeiss Axiocam digital camera and Axiophot2 or M² Bio microscopes, and were processed using Adobe Photoshop CS software.

Quantification of thickened placode and average placode cell density in *Notch1* mutants

The thickened otic placode was defined as the two- to three-cell layer of ectoderm located adjacent to rhombomere 5/6 (as identified morphologically with DAPI staining and/or by lack of *Foxi2* expression). Quantifications of placode size were made from 15- μ m serial sections from *Notch1* mutants and age-matched control embryos. Length measurements were made using Image J software. To allow for direct comparisons along the anteroposterior (AP) axis of control and mutant mice, measurements were binned into five categories: 0-20% (being the most anterior sections), 21-40%, 41-60%, 61-80% and 81-100% (being the most posterior sections). For a given genotype, each bin consisted of multiple sections from several embryos. The mean and standard error of the mean (s.e.m.) were calculated for each bin. Non-parametric Mann-Whitney *U*-tests were performed to test for significance between genotypes. The cranial region of *Notch1* mutants was comparable in size to controls. To confirm this, we measured the dorsoventral (DV) length of the neural tube adjacent to the otic placode. The measurements were processed as described for the otic placode. We found no differences in neural tube length between *Notch1* mutants and controls (data not shown). For average density measurements, serial 15- μ m thick sections stained with DAPI and/or hybridized with *Dlx5* or *Foxi2* probes were used. The cell density for each section was calculated as follows: number of cells/ μ m² \times 500 and was pooled for each genotype.

Quantification of cell proliferation, otic cup length and Wnt reporter domain length in *cNIICD* mutants

Cell proliferation counts were performed as described previously (Ohyama et al., 2006). To account for variations in the staging of embryos, the mediolateral length of the otic cup or Wnt domain was standardized against the DV neural tube length adjacent to the otic cup and expressed as a percentage. Only mid-sections from otic cups were used for quantification and Student's *t*-tests were performed to test for significance between genotypes.

RESULTS

Notch pathway genes are expressed during early otic placode development

The pre-otic field destined to give rise to the otic placode and surrounding epidermis is marked by *Pax2* expression from the 0 somite stage [0ss; E8 in the mouse (Ohyama and Groves, 2004b; Ohyama et al., 2006)]. *Pax2* expression later becomes restricted to the otic placode, which is morphologically visible as a thickening patch of ectoderm next to rhombomeres 5 and 6 from the 8ss (E8.5) onwards (Ohyama and Groves, 2004b). To see whether elements of the Notch pathway were expressed at an appropriate place and time to participate in otic placode induction, we compared the expression patterns of *Notch1*, *Jag1*, *Dll1*, *Hes1*, *Lfng* and *Hes5* to *Pax2* (Fig. 1). At 0-1ss, no Notch pathway transcripts were detected in the pre-otic field (Fig. 1B,C). Onset of *Notch1* expression was observed as early as the 4ss, becoming stronger by 5-7ss (Fig. 1C). Scattered cells in the anterior *Pax2* domain adjacent to the neural tube expressed the Notch ligand *Jag1* from around 5ss, although posterior cells did not express *Jag1* until 8-9ss (arrowhead, Fig. 1C,D). *Dll1* was also expressed adjacent to the neural tube at 4-5ss (Fig. 1B,C), and was restricted to the otic placode from 9ss (Fig. 1C). Between 12 and 14ss, *Dll1* expression was gradually restricted to differentiating neuroblasts in the anteroventral placode (data not shown) (Adam et al., 1998). We were unable to detect *Lfng* at the pre-otic field and placode stages in whole mounts (data not shown), although, at later otic vesicle stages, *Lfng* is expressed in the anteroventral portion of the otic cup destined to produce the vestibuloacoustic ganglion and the utricular and saccular maculae (Morsli et al., 1998; Raft et al., 2004).

Hes1 and *Hes5* are effectors of the Notch pathway that function in many processes, including in the regulation of cell fate decisions (Bray, 1998; Kageyama et al., 2007; Lai, 2004). *Hes1* expression was scattered throughout the pre-otic field and by 10-11ss was restricted to the otic placode (Fig. 1C). We found no evidence for *Hes5* expression in the pre-otic field (data not shown). These data suggest that at least some transcriptional targets of the Notch pathway are expressed during early phases of otic placode development.

We previously used a transgenic Wnt reporter mouse line (Mohamed et al., 2004) to show that the canonical Wnt signaling pathway is activated in the pre-otic field between 3 and 5ss (Ohyama et al., 2006). Several Wnt family members are expressed in an appropriate location to trigger the observed Wnt reporter activity – for example, *Wnt8* is expressed in rhombomere 4 (Ohyama et al., 2006). We also observed *Wnt6* expression in the *Pax2*⁺ pre-otic field at 0ss. It continues to be expressed in the neural folds at 5-7ss and in the dorsal-most region of the otic placode at 11ss (Fig. 1C) (Lillevali et al., 2006). As the onset of Notch pathway gene expression closely corresponded to Wnt reporter activity in the pre-otic field (Fig. 1B,C), we hypothesized that the Notch1 pathway might interact with the canonical Wnt signaling pathway in mediating the fate decision between otic placode and epidermis.

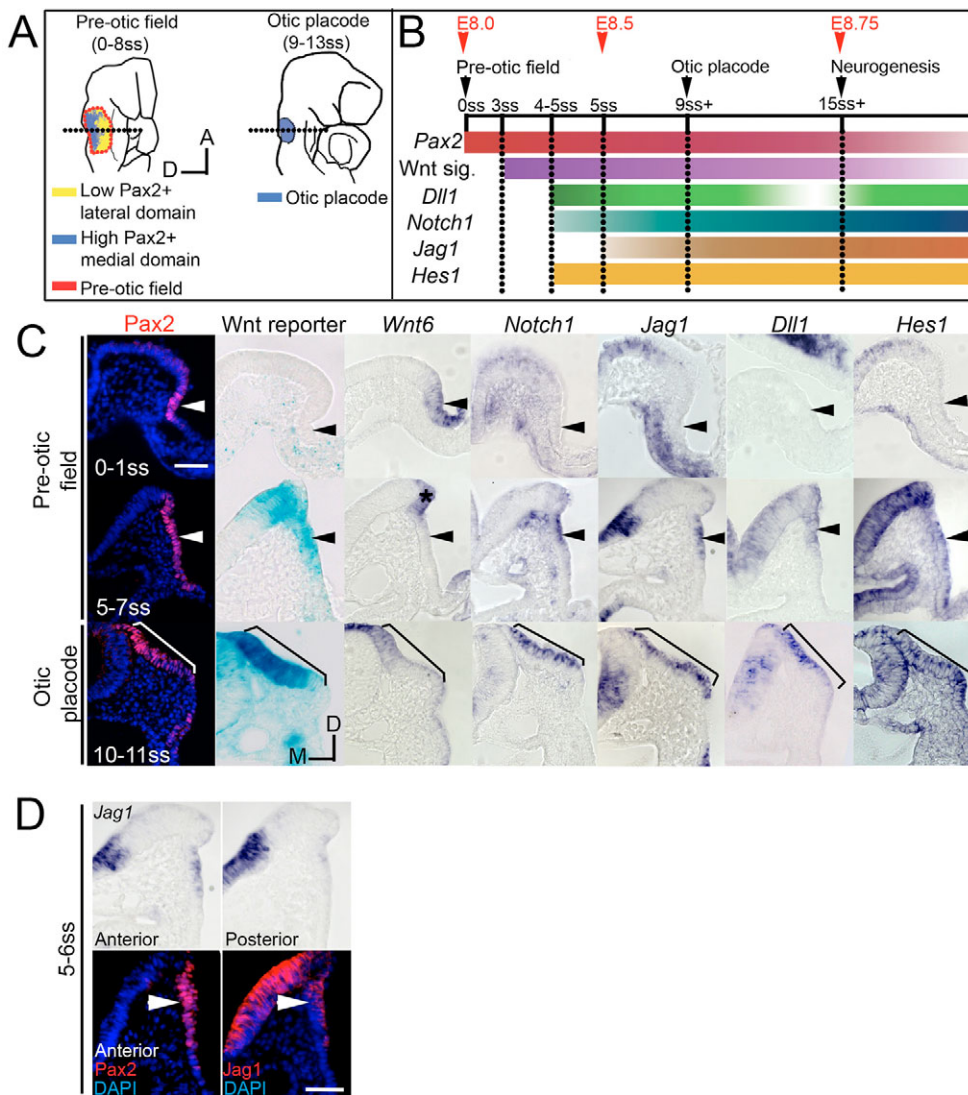


Fig. 1. Expression profile of Notch pathway genes during otic placode development.

(A) Schematic views of embryos during otic placode development. The dotted line indicates the approximate level of sections in C. (B) Summary showing the onset of *Notch1* (blue), jagged 1 (*Jag1*; brown), delta-like 1 (*Dll1*; green) and *Hes1* (yellow-orange) expression with respect to *Pax2* expression (pink-red) and Wnt signaling (purple). Preceding neurogenesis, *Dll1* expression is high in the pre-otic field but progressively becomes weaker in the placode. During neurogenesis, *Dll1* localizes to neuroblasts. (C) Sections comparing the expression of *Wnt6*, *Notch1*, *Jag1*, *Dll1* and *Hes1* with respect to *Pax2* (red) and the Wnt reporter (blue). Arrowheads mark the pre-otic field. Brackets mark the extent of the otic placode. (D) Top row, *Jag1* expression in the anterior and posterior pre-otic field; bottom row, consecutive serial sections through the pre-otic field immunostained with anti-*Pax2* and anti-*Jag1* antibodies, respectively. Scale bars: 50 μ m.

Notch pathway components are positively regulated by canonical Wnt signaling in the developing otic placode

Previous studies suggest that Notch pathway components can be regulated by β -catenin (e.g. Estrach et al., 2006; Katoh and Katoh, 2006). We therefore examined expression of Notch pathway genes in embryos carrying gain- or loss-of-function mutations of the canonical Wnt pathway in the *Pax2*⁺ pre-otic field. We crossed *Pax2-Cre* transgenic mice (Ohyama and Groves, 2004b) with mice in which β -catenin is constitutively activated in Cre-expressing cells [*cAct* (Harada et al., 1999)], and examined expression of *Jag1*, *Notch1* and *Hes1*. In *cAct* mutants, *Jag1* expression was expanded ventrally to the level of the pharynx at the 9-10ss (bracket, Fig. 2A) and this ectopic expression continued until at least E9.0. *Jag1* is thought to be a direct target of β -catenin, as its promoter region contains five, three and six consensus Tcf/Lef-binding sites in mouse, human and rat, respectively (Estrach et al., 2006; Katoh and Katoh, 2006). The domain of *Notch1* and *Hes1* expression was also expanded, although only after a delay (from the 14-15ss; Fig. 2A, brackets). Such a delayed induction of *Notch1* and *Hes1* relative to *Jag1* has also been observed in epidermis in which β -catenin is activated (Ambler and Watt, 2007). Other Notch pathway genes, such as *Dll1*, *Hes5* and *Lfng*, were not expressed in *cAct* mutants (data not shown).

To determine whether Wnt signaling is necessary for the expression of Notch pathway components, we analyzed the expression of *Jag1*, *Notch1* and *Hes1* in the *Pax2*⁺ pre-otic field of mice lacking β -catenin [*β -cat-CKO* (Brault et al., 2001)]. The *Jag1* domain was significantly reduced at 10-11ss, as we have previously reported for *Pax2* and *Pax8* (Ohyama et al., 2006). Many cells within the vestigial *β -cat-CKO* otic vesicle were β -catenin⁻; *Jag1*⁻, suggesting that Wnt signaling is directly responsible for *Jag1* induction in the placode (bracket, Fig. 2B). Close examination of the vestigial mutant vesicles at E9-E9.5 revealed that cells expressing *Jag1* were β -catenin⁺ and had therefore failed to undergo Cre recombination (Fig. 2B). The domains of *Notch1* and *Hes1* were also significantly reduced, although the resolution of the whole-mount in situ technique made it difficult to determine whether all *Notch1*- and *Hes1*-expressing cells also expressed β -catenin protein (Fig. 2B).

Wnt and Notch signaling pathways differentially regulate expression of otic markers

The expression of Notch pathway genes in the pre-otic field and otic placode, together with the regulation of these genes by Wnt signaling suggested that Notch signaling might participate in the fate decision between otic placode and epidermis. To test this, we conditionally activated Notch1 in the pre-otic field using mice in

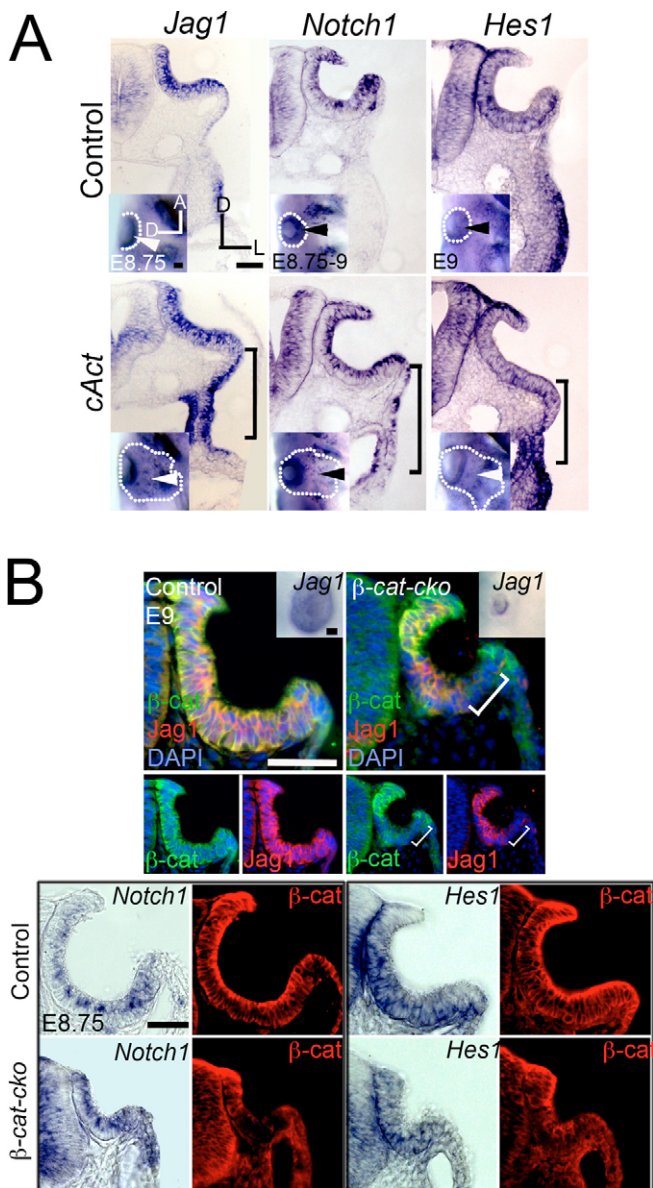


Fig. 2. The canonical Wnt pathway positively regulates components of the Notch pathway in the otic placode. (A) *Jag1*, *Notch1*, and *Hes1* domains are ectopically expanded in *cAct* embryos (bracket). Insets show corresponding whole mounts. Arrowheads indicate normal (top row) or ectopic (bottom row) expression; dotted outline demarcates the otic area. (B) *Jag1*, *Notch1* and *Hes1* domains are reduced in β -cat-CKO embryos. (Top panels) Anti-*Jag1* (red) and β -catenin (β -cat, green) co-immunostaining. Bracket indicates β -catenin⁻; *Jag1*⁻ cells. Inset shows *Jag1* expression at E9.5 in whole mount. (Lower panels) Sections of *Notch1*- and *Hes1*-hybridized embryos. Scale bar: 50 μ m.

which the active, intracellular domain of Notch1 receptor (NIICD) was knocked into the ROSA26 locus with a transcriptional STOP cassette flanked by LoxP sites (Murtaugh et al., 2003). We drove expression of *NIICD* in the *Pax2*⁺ pre-otic field using *Pax2-Cre* mice (Ohyama and Groves, 2004b). The *Pax2-Cre* mouse line expresses Cre recombinase in the midbrain and rhombomere 1 (R1) of the hindbrain (Ohyama and Groves, 2004b). Conditionally activated *NIICD* (*cNIICD*) mutants displayed an open neural tube phenotype at the level of the

midbrain-R1 region, which is likely to result from overproliferation of precursor cells induced by Notch activation. However, the patterning of the posterior hindbrain next to the ear was normal at E8.5-E9.5, based on the expression of *Hoxb1* (rhombomere 4), *Fgf3* (rhombomeres 5 and 6), *Epha4* and *Krox20* (rhombomeres 3 and 5; see Fig. S1B in the supplementary material), suggesting that any otic placode phenotype in *cNIICD* mutants is not due to changes in the adjacent hindbrain.

We examined embryos inheriting both the Cre-inducible *NIICD* and *Pax2-Cre* transgenes for otic placode and epidermal markers. The *NIICD* transgene also harbors an IRES-nGFP sequence, allowing the visualization of *NIICD*-expressing cells by GFP fluorescence. GFP-expressing cells were observed throughout the pre-otic field from 5-6ss (data not shown). E9.5 *cNIICD* mutant embryos displayed GFP expression throughout a thickened placode-like structure that expanded to the level of the ventral pharynx (see Fig. S1A in the supplementary material). The analysis of *cNIICD* embryos at 10-11ss revealed that the *Pax8* domain was expanded ventrally (arrowheads and brackets, Fig. 3A,A'). We previously showed that *Foxi2* is an epidermal marker expressed in a complementary manner to *Pax2* and *Pax8* during otic placode development (Ohyama and Groves, 2004a). By E8.75-E9, *Foxi2* expression was reduced dramatically in *cNIICD* mutants when compared with controls (dotted outline and brackets, Fig. 3C,C'), complementing the expansion of the thickened epidermis. To determine whether cell proliferation was responsible for the expanded placode, we examined expression of the M-phase marker phosphohistone-3 (PH3) in *cNIICD* embryos ($n=10$ placodes) and control embryos ($n=8$ placodes) produced by crossing the *Pax2-Cre* line with the Cre-inducible *Z/EG GFP*-expressing line (Novak et al., 2000). We saw no significant differences in total PH3⁺ or PH3⁺;GFP⁺ cell counts per section (see Fig. S1D in the supplementary material).

The expansion of *Pax8* at the expense of *Foxi2* in *cNIICD* embryos is strikingly similar to that seen in embryos in which the canonical Wnt pathway is activated [*cAct* embryos (Ohyama et al., 2006)]. However, in contrast to *cAct* embryos, we saw only a modest expansion of the *Pax2* domain (bracket and arrowhead, Fig. 3B,B'; see also Fig. S1C in the supplementary material), and no expansion of the otic markers *Gbx2* or *Sox9* (Fig. 3D). Finally, a marker of the dorsolateral otocyst, *Hmx3*, which does not require either Wnt or Hedgehog signaling for its expression (Ohyama et al., 2006; Riccomagno et al., 2002) was also not expanded in *cNIICD* mutants (Fig. 3D).

These results suggest that different aspects of otic placode development are differentially regulated by Wnt and Notch signaling. Placode markers such as *Pax2*, *Gbx2* and *Sox9* appear to be regulated by Wnt signaling (Ohyama et al., 2006; Saint-Germain et al., 2004), but not Notch signaling, whereas markers such as *Pax8*, the morphological thickening of epithelium and the repression of the epidermal marker *Foxi2* can be regulated by both Notch and Wnt signals. To determine whether Notch signaling can regulate these markers independently of Wnt signaling, we analyzed β -cat-CKO;*cNIICD* mutant embryos in which β -catenin was inactivated and Notch1ICD was activated throughout the pre-otic field. Mutant embryos displayed greatly expanded regions of thickened placode-like epithelium that expressed both *Pax8* and *Jag1* (Fig. 3E). This expanded region of thickened epithelium was largely devoid of *Foxi2* expression (Fig. 3E), although occasional *Foxi2*⁺ patches of cells could sometimes be detected. These results show that Notch and Wnt signals can independently regulate some aspects of otic placode development.

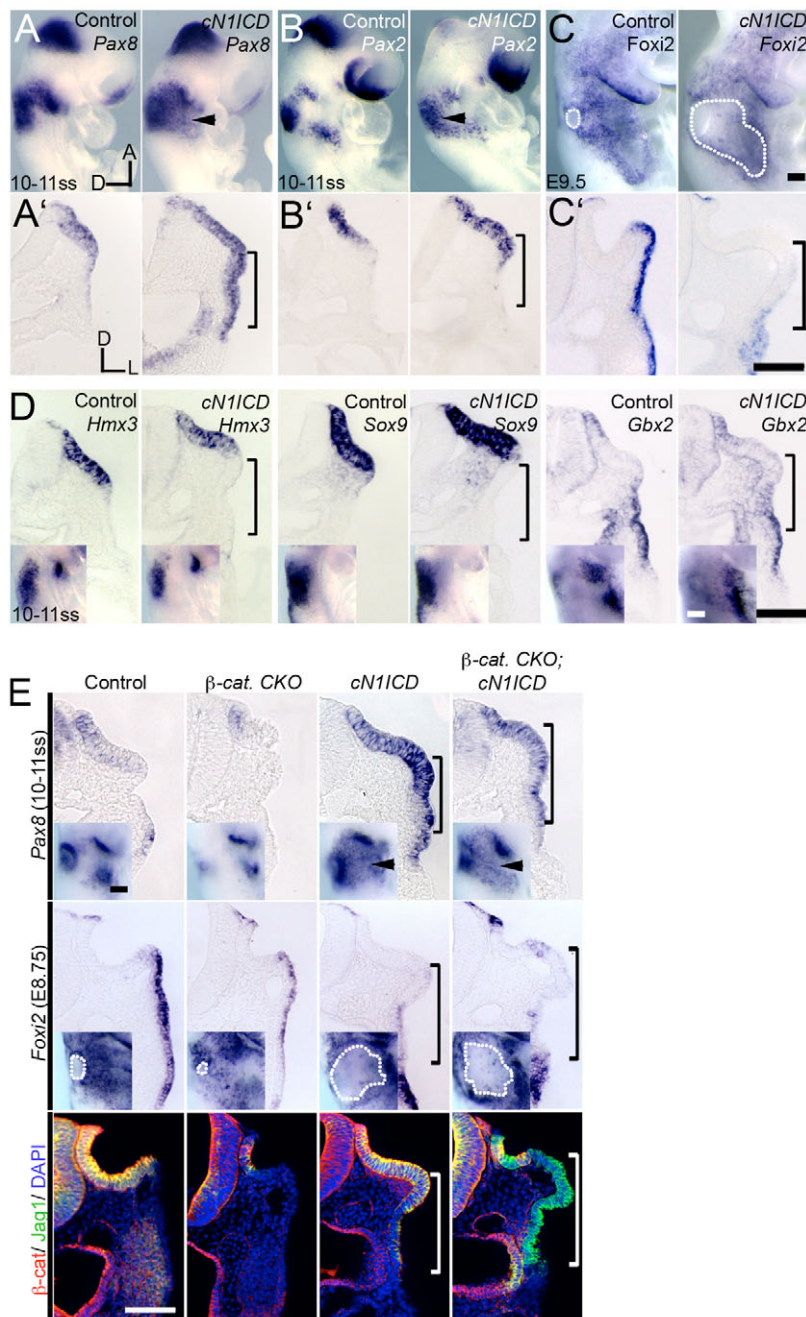


Fig. 3. Some, but not all otic markers are expanded at the expense of epidermis in conditionally activated Notch1 (*cN1ICD*) embryos.

(A-C') Expanded otic placode in *cN1ICD* embryos hybridized with probes for *Pax8* (A,A'), *Pax2* (B,B') and the epidermal marker *Foxi2* (C,C'). Arrowheads indicate ectopic expression. Dotted outline in C indicates the invaginating otic cup (controls) or expanded otic region (*cN1ICD* mutants). (A'-C') Corresponding transverse sections. Brackets indicate the lateral ectopic placode region. Scale bars: 100 μm. (D) *Hmx3*, *Sox9* and *Gbx2* otic markers are not expanded in *cN1ICD* mutants. (E) In *β-cat*-CKO; *cN1ICD* mutants, *Pax8* (top row) and *Jag1* (green, bottom row) are expanded at the expense of *Foxi2* (middle row). (Bottom row) *β-catenin* (red) and *Jag1* protein expression in *Foxi2* hybridized embryos. Insets show whole mounts. Scale bar: 100 μm.

Inactivation of *Notch1* reduces the size of the otic placode

Our results show that Notch1 activation throughout the *Pax2*⁺ pre-otic field expands some otic placode markers at the expense of epidermis. In complementary experiments, we examined *Notch1* mutants, in which a substantial portion of the *Notch1* gene is deleted [amino acids 1056-2049 (Conlon et al., 1995)]. This deletion encompasses RAM and Ankyrin repeats required for RBPJK signaling (Conlon et al., 1995; Fortini and Artavanis-Tsakonas, 1994; Kurooka et al., 1998a; Kurooka et al., 1998b; Lamar et al., 2001; Nam et al., 2003; Tani et al., 2001). We confirmed that posterior hindbrain patterning was normal in *Notch1* mutants by assaying for *Hoxb1*, *Fgf3* and *Krox20* expression (see Fig. S2A in the supplementary material). All three genes were expressed

normally, suggesting that any defects observed in otic placode development are due to deficiency in Notch1 signaling in the placode, rather than in the hindbrain.

To determine whether Notch signaling was necessary for the expression of otic markers, we examined *Pax2* and *Pax8* expression in *Notch1* mutants. By 9-11 ss there was a dramatic downregulation of *Pax2* expression in mutants in both the otic region and the epibranchial placodes (Fig. 4A). Although the anteroposterior limits of *Pax8* expression in the otic region was reduced, expression in the hyoid arch was relatively unchanged (Fig. 4B). In *Notch1* mutant whole mounts, the limits of the *Pax2* and *Pax8* domains in the anteroposterior axis were reduced (brackets, Fig. 4). Sections through *Notch1* mutants also revealed a reduction in the mediolateral extent of *Pax2* and *Pax8* expression (brackets, Fig. 4).

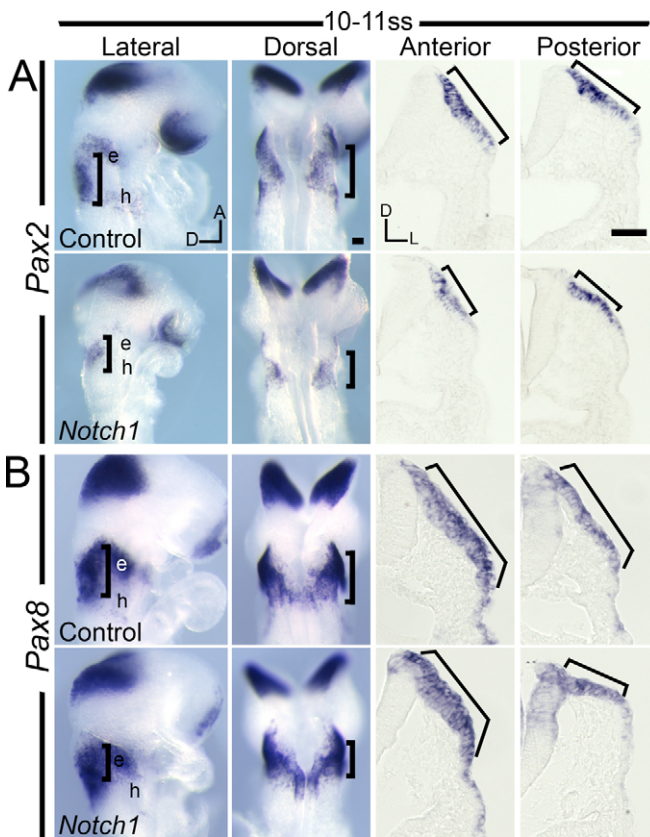


Fig. 4. Domains of *Pax2* and *Pax8* are reduced in *Notch1* mutants. (A,B) Dorsal and lateral whole-mount views of *Pax2* (A) and *Pax8* (B) expression. Anterior and posterior sections through control and *Notch1* mutant placodes are also shown. Brackets indicate otic expression. e, epibranchial placode; h, hyoid arch. Scale bars: 50 μm .

The reduction in the size of the otic placode in *Notch1* mutants may result from increased apoptosis, increased cell density or a change in cell fate. We measured the size of the placode by examining *Foxi2* expression, which is precisely excluded from the thickened placode region. The *Notch1* mutant otic placode was indeed smaller at 9-13ss, on the basis of *Foxi2* expression (dotted outline, Fig. 5A,B). We compared the mediolateral extent of the thickened otic placode in *Notch1* mutants and controls at 9-11ss and 12-13ss (see Materials and methods; Fig. 5C,D) *Notch1* mutants (9-11ss, $n=25$ placodes; 12-13ss, $n=10$ placodes) had significantly smaller placodes than did controls (9-11ss, $n=13$ placodes; 12-13ss, $n=6$ placodes), regardless of the axial level of the section ($P<0.05$ - 0.005 ; Fig. 5C,D). There were no significant changes in placode cell density at 9-11ss ($n=10$ mutant placodes; $n=6$ control placodes) and 12-13ss ($n=5$ mutant placodes; $n=4$ control placodes; $P>0.05$; Fig. 5F), or in apoptosis when analyzed for activated caspase 3 expression (Fig. 5G) (Conlon et al., 1995; Del Monte et al., 2007). We also confirmed that the smaller placode was not caused by the precocious generation of neurons by analyzing *Ngn1* expression (data not shown).

Collectively, our data show that many otic placode precursors undergo a fate change to epidermis in *Notch1*-deficient embryos. It is possible that the other Notch receptors are active during otic placode development in addition to *Notch1*. We confirmed our results by examining conditional mutants of *Rbpj/Rbsuh*, a

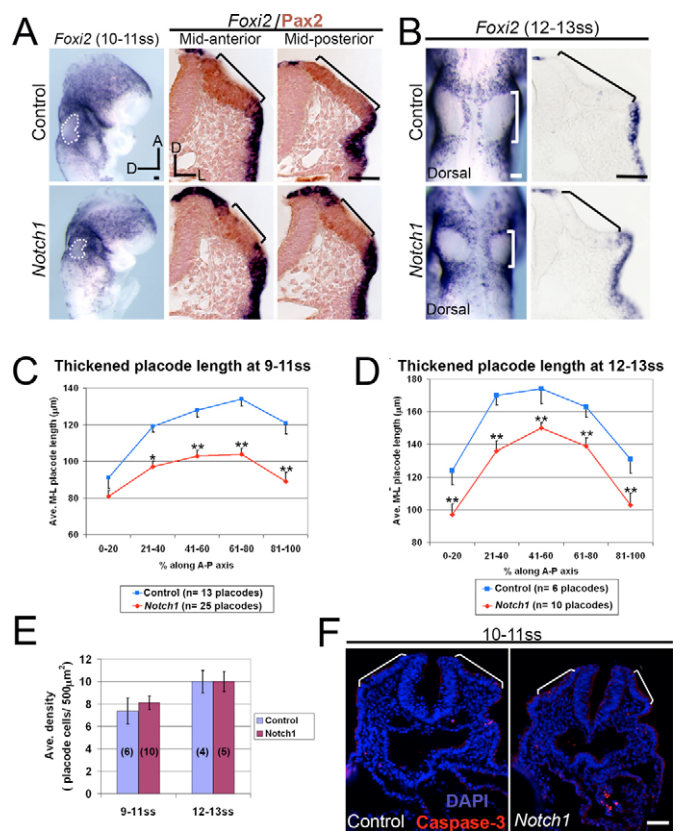


Fig. 5. The otic placode is significantly reduced in *Notch1* mutants.

(A,B) *Foxi2* expression at 10-11ss (A) and at 12-13ss (B) in whole mounts and sections. Dotted outline/brackets indicate the thickened otic placode region that does not express *Foxi2*. (A) Corresponding sections showing *Foxi2* transcript (blue) and *Pax2* protein expression (brown). (C,D) Quantitative comparison of mediolateral placode length in control and *Notch1* mutant embryos at 9-11ss (C) and 12-13ss (D; refer to Materials and methods). * $P<0.05$; ** $P<0.005$. (E) Quantification of average cell density in control and *Notch1* mutants. Placode n values are given in parentheses. Error bars indicate s.e.m. (F) Activated caspase 3 expression (red), indicating a lack of apoptotic cells within the *Notch1* mutant otic placode at 10-11ss. Brackets indicate the thickened placode. Scale bar: 50 μm .

transcriptional co-factor of NICD. The otic placode still forms in these mice (see Fig. S2C in the supplementary material) (see also Oka et al., 1995; de la Pompa et al., 1997), confirming that Notch signaling can modulate the size of the otic placode but is not necessary for its induction.

Daudet and colleagues recently suggested that initiation, but not maintenance, of *Jag1* expression in the chick otic placode is regulated independently of Notch1 signaling (Daudet et al., 2007). We confirmed this result in mice: *Jag1* continued to be expressed in the placode of *Notch1* mutants, but the intensity of expression was reduced when compared with controls (see Fig. S2B in the supplementary material). It has been previously reported that *Jag1* continues to be expressed in a morphologically distinct otic placode in mice carrying mutations of *Pofut1*, an *O*-fucosyltransferase essential for Notch signaling (Shi and Stanley, 2003). We confirmed that *Jag1* and *Hes1* expression can be initiated in the absence of canonical Notch signaling by examining conditional mutants of *Rbpj/Rbsuh*. Both genes continue to be expressed in a

morphologically visible otic cup, although *Hes1* was expressed at significantly reduced levels compared with controls (see Fig. S2C in the supplementary material). This is consistent with *Hes1* expression being initiated by Notch signaling, but *Jag1* expression being initiated independently of Notch signaling.

Notch1 augments canonical Wnt signaling in the otic placode

Canonical Wnt signaling plays an important role in defining the size of the otic placode by driving medial *Pax2*⁺ pre-otic cells towards an otic rather than a cranial epidermis fate (Ohyama et al., 2006). Similarly, conditional activation of Notch1 in the *Pax2*⁺ pre-otic field expands some, but not all, otic markers at the expense of epidermis (Fig. 3). Additionally, Notch pathway gene expression can be activated by canonical Wnt signaling (Fig. 2). These results suggested the possibility of reciprocal interactions between the Notch and Wnt pathways. To test whether Wnt signaling is modulated by the Notch pathway in the developing otic placode, we crossed Wnt reporter mice expressing a β -galactosidase reporter gene under the control of six Tcf/Lef DNA-binding sites (Mohamed et al., 2004) to either *cNIICD* or *Notch1* mutant lines.

Surprisingly, although the thickened *Pax8*⁺ placode was dramatically expanded to the level of the pharynx in *cNIICD* embryos (Fig. 3A), Wnt reporter activity showed a much more modest expansion, extending a little beyond the lateral edge of the otic cup (Fig. 6A). We observed similar results with *Dlx5*, a known Wnt-responsive marker of the otic placode (bracket, Fig. 6A). To verify these results, we made use of the fact that *cNIICD* mutants also express nuclear GFP after Cre recombination (Murtaugh et al., 2003). We co-immunostained *cNIICD*; *Wnt* reporter embryos with anti- β -galactosidase and anti-GFP antibodies to mark the extent of the Wnt reporter and the expanded otic placode, respectively (Fig. 6B). By E9-E9.25, Wnt activity was elevated in the lateral regions of the mutant otic cup, which normally demonstrate moderate or low Wnt activity (red arrowhead; Fig. 6A). Furthermore, the otic cup region was larger in *cNIICD* mutants than in controls (see Fig. S3 in the supplementary material, $n=13$ mutant placodes, $n=14$ control placodes; $P<0.005$). However, the ectopic placode region lateral to the otic cup, which expressed NIICD and GFP, did not express β -galactosidase (bracket, Fig. 6B). These results suggest that Notch signaling can augment Wnt signaling, but that the active Notch1 ICD does not directly regulate Wnt-responsive genes containing Tcf/Lef DNA-binding sites.

To test whether Wnt signaling can also be modulated by loss of Notch1 activity, we examined *Notch1* mutant mice crossed to a Wnt reporter mouse background. As expected, Wnt reporter activity was detected in *Notch1* mutant placodes (Fig. 6C). However, the intensity of Wnt activity, as measured by time-matched β -galactosidase reactions was weaker than in controls. Additionally, the mediolateral extent of the Wnt reporter and expression of the Wnt-responsive gene *Dlx5* was slightly reduced (Fig. 6C), reflecting the observed reduction in the placode size caused by *Notch1* deficiency (Fig. 4). Taken together with our data showing that Wnt signaling can upregulate Notch pathway components, our results are consistent with a model in which the Wnt pathway can positively regulate components of the Notch pathway, and can, in turn, be augmented by Notch signaling. One prediction of this model is that maximal activation of Wnt signaling by a constitutively activated β -catenin mutation will be unaffected by a *Notch1* mutation. To test this, we analyzed *Pax8* and *Foxi2* expression in *Notch1* mutant embryos that also carried the activated β -catenin (*cAct*) mutation. As expected, the size of the expanded *Pax8* domain seen in *cAct*

embryos was not significantly different from that in *Notch1*; *cAct* mutants (Fig. 6D). Similarly, the reduced domain of epidermal *Foxi2* expression seen in *cAct* mutants was not significantly different from that in *Notch1*; *cAct* mutants (Fig. 6D).

DISCUSSION

Notch signaling plays multiple roles in inner ear patterning, from the specification of neurons and prosensory patches to the generation of the stereotypical pattern of hair cells (Adam et al., 1998; Brooker et

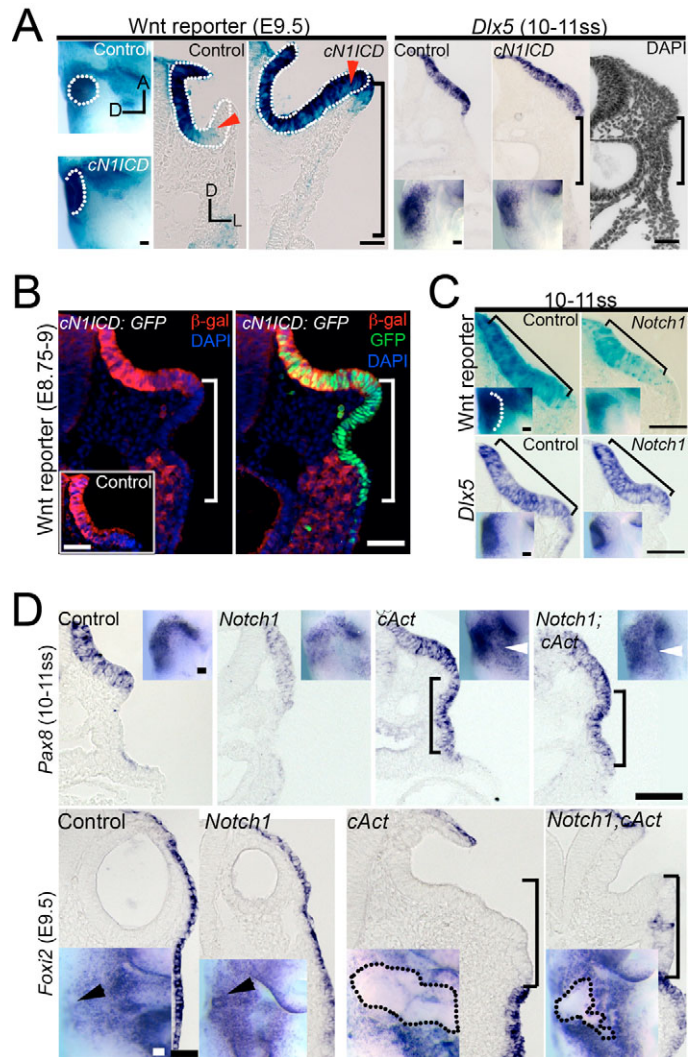
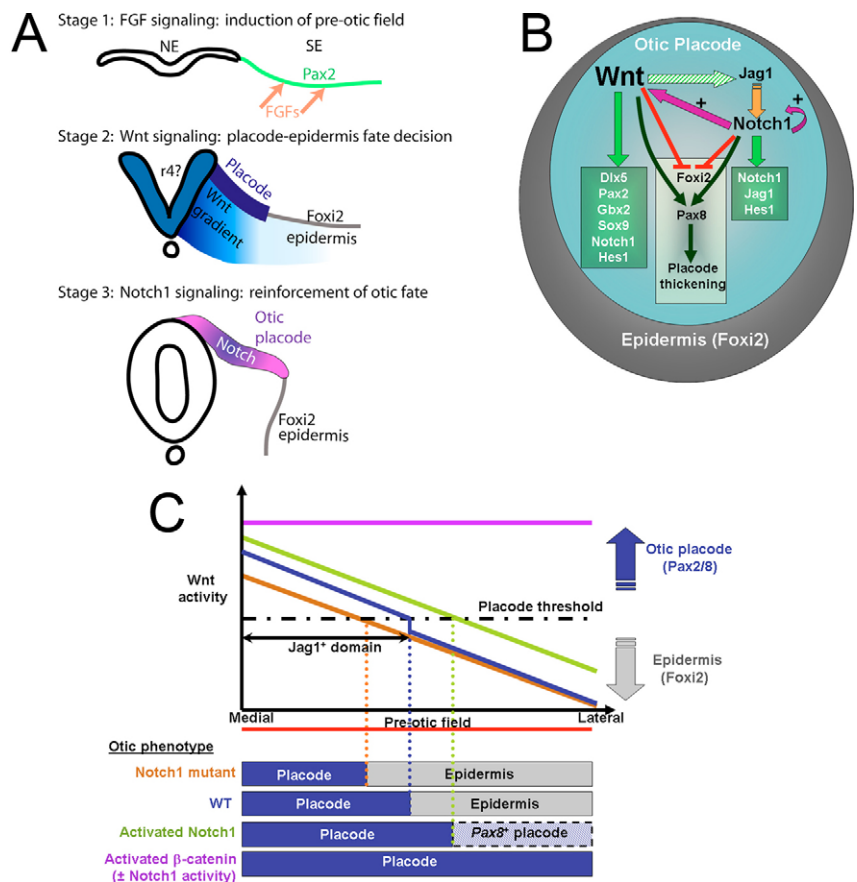


Fig. 6. Notch1 signaling augments Wnt signaling in the otic placode. (A) Wnt reporter and *Dlx5* mRNA expression is increased in conditionally overexpressing Notch1-ICD (*cNIICD*) embryos in whole mounts and corresponding mid-placode transverse sections. Dotted outline demarcates the otic cup; red arrowhead indicates the mediolateral otic region. (B) Wnt reporter expression in transverse sections of control and *cNIICD*; Wnt reporter embryos. Wnt reporter mice were co-immunostained with anti- β -galactosidase (β -gal; red) and anti-GFP (green) antibodies. Note that only the medial part of the expanded placode expresses the Wnt reporter. The inset shows anti- β -galactosidase staining in a normal Wnt reporter mouse. Brackets in A and B indicate that the ectopic lateral placode region is negative for Wnt reporter and *Dlx5*. (C) Wnt reporter and *Dlx5* expression is diminished in *Notch1* mutants relative to in controls. Brackets indicate the otic placode. (D) A comparison of *Pax8* and *Foxi2* expression in *Notch1* mutant, *cAct* and *Notch1*; *cAct* double mutant littermates. Arrowheads indicate otic expression. Scale bars: 50 μ m.

Fig. 7. Model of how Wnt and Notch pathways interact to regulate the size of the otic placode.

(A) The generation of the otic placode can be divided into three stages. *Pax2* in the pre-otic field is induced by FGFs (arrows). A gradient of Wnts (light blue) determines the size of the otic field: above a certain threshold, Wnts drive cells towards an otic fate (dark blue), and, below the threshold, cranial epidermis is formed (*Foxi2*) (Ohyama et al., 2006). Notch1 signaling is superimposed on the Wnt gradient (pink-blue) and acts to augment the otic fate imposed by Wnts. NE, neuroectoderm; SE, surface ectoderm. (B) The Wnt pathway is the primary signal (denoted by bold lettering) that controls otic fate (blue region) by positively regulating (green arrows) the expression of *Dlx5*, *Sox9*, *Gbx2*, *Pax2*, *Pax8* and components of the Notch1 pathway, such as *Notch1* and *Hes1* (Figs 1, 2). *Jag1* expression is initiated by Wnts (striped green arrow; see Fig. 2). Notch1 acts to: (1) augment Wnt and Notch1 activity within otic cells (pink arrow; plus sign); and (2) co-operate with Wnt to negatively regulate *Foxi2* (red) and positively regulate *Pax8* (dark green), and to maintain a thickened otic placode. (C) A model summarizing the various otic placode phenotypes observed in this study. A gradient of Wnt activity emanating from the midline is established across the mediolateral axis of the pre-otic field. Cells exposed to a certain threshold of Wnt signals express *Jag1* and differentiate as otic placode (blue). Below this threshold, cells differentiate as epidermis (gray). *Jag1*-Notch1 signaling augments Wnt signals in the medial region of the otic placode, whereas more lateral regions are not exposed to Notch1 signals and Wnt signaling is not augmented. In the absence of Notch1 (brown line), the gradient of Wnt signaling becomes weaker, resulting in a smaller placode and more epidermis. When Notch1 is activated in the pre-otic field (green line), the Wnt gradient is augmented further. Some Wnt-dependent markers (*Dlx5*) are expressed only in the expanded Wnt domain, whereas markers such as *Pax8* are expressed throughout the pre-otic field (marked as *Pax8*⁺ placode). When β -catenin is activated in the entire pre-otic field (purple line), all cells differentiate as otic placode (Ohyama et al., 2006).



al., 2006; Daudet et al., 2007; Daudet and Lewis, 2005; Haddon et al., 1998; Kiernan et al., 2005; Lanford et al., 1999; Shi et al., 2005). Here, we have uncovered new roles for Notch and Wnt signaling in the early development of the ear. Conditional activation of *Notch1* in the *Pax2*⁺ pre-otic field causes the expansion of some, but not all, otic markers at the expense of epidermis. Conversely, in the absence of Notch1 signaling, the otic placode is significantly smaller. We have also shown that Wnt signaling regulates components of the Notch pathway, such as *Jag1*, and that Notch signaling positively regulates Wnt signaling. Our results suggest that Notch augments the Wnt signaling pathway to help define the size of the otic placode.

The expression of Notch signaling pathway components in the otic placode – a role for Wnt signaling

Our expression data show that several components of the Notch signaling pathway – *Notch1*, *Jag1*, *Dll1* and *Hes1* – are expressed in a medial subset of the mouse *Pax2*⁺ pre-otic field from the 5ss onwards, and that Wnt signaling initiates expression of at least some Notch pathway components. *Notch1*, *Jag1*, *Dll1* and *Hes1* are all expressed in the pre-otic field after *Wnt6*, *Wnt8* and the first signs of Wnt reporter activity (Fig. 1C) (Ohyama et al., 2006). Expression of these Notch pathway genes occurs only within the region of the medial *Pax2*⁺ pre-otic field that responds to Wnt

signaling (Fig. 1C). Consistent with previous reports (Duncan et al., 2005; Espinosa et al., 2003; Estrach et al., 2006), we found that ectopic activation of the canonical Wnt pathway induced the expression of *Jag1*, *Notch1* and *Hes1* (Fig. 2A), whereas conditional deletion of β -catenin greatly reduced their expression (Fig. 2B). Wnt signaling can control the transcription of Notch pathway genes by directly acting on elements located in their promoters (Duncan et al., 2005; Espinosa et al., 2003; Estrach et al., 2006; Katoh and Katoh, 2006). In the case of the *Jag1* promoter, there are multiple Tcf/Lef-binding sites that are conserved between mouse and human (Estrach et al., 2006; Katoh and Katoh, 2006). Putative Tcf/Lef-binding sites have also been identified in the *Notch1* promoter (Galceran et al., 2004); however, although the *Dll1* promoter also has Tcf/Lef-binding sites (Galceran et al., 2004), its expression was not expanded in embryos expressing activated β -catenin. Recent evidence suggests that factors distinct from Notch signaling are required to initiate *Jag1* expression in the chick otocyst (Daudet et al., 2007), although maintenance of *Jag1* is Notch dependent. Our results suggest that *Jag1* initiation in the developing ear might be regulated directly by Wnt signaling (Fig. 2B, Fig. 7), whereas *Notch1* and *Hes1* expression might be initiated by Wnt signaling, and possibly also by FGFs (Norgaard et al., 2003; Zhou and Armstrong, 2007), in addition to by Notch signaling itself.

Overlapping and distinct functions of Notch and Wnt signaling in the otic placode

We recently showed that the mouse pre-otic field defined by the expression of *Pax2* undergoes a fate decision to give rise to the cranial epidermis and the otic placode (Ohyama et al., 2006). The placode-epidermis fate decision is mediated by the canonical Wnt pathway, such that conditional deletion of β -catenin in *Pax2*⁺ cells drastically reduces the otic placode and expands the epidermis, whereas conditional activation of β -catenin in *Pax2*⁺ cells expands the otic placode at the expense of epidermis (Ohyama et al., 2006). In the light of the expression of many components of the Notch signaling pathway in the developing otic placode (Fig. 1), we hypothesized that Notch signaling might act with the canonical Wnt pathway to specify otic placode identity.

The activation of Notch1 signaling in the pre-otic field leads to a massive expansion of thickened, placode-like epithelium expressing *Pax8* at the expense of *Foxi2*⁺ epidermis, in a manner very similar to the activation of β -catenin (Fig. 3). By contrast, although *Pax2* expression can be expanded by the activation of Wnt signaling (Ohyama et al., 2006), it showed only a modest expansion in *cNIICD* mutants compared with *Pax8* (compare Fig. 3A with 3B). *Pax2* and *Pax8* are known to be differentially regulated by FGF signaling and the *foxi1* transcription factor during induction of the zebrafish ear (Hans et al., 2004; Nissen et al., 2003; Solomon et al., 2003; Solomon et al., 2004), and our results suggest that these genes might also be differentially regulated by Notch signaling. In particular, *Pax8* can be regulated either by canonical Wnt signaling or by Notch signaling. However, it is not clear whether the two pathways regulate *Pax8* in entirely different ways or whether they converge on a nodal point, such as the binding of Lef/Tcf complexes to the *Pax8* promoter (Schmidt-Ott et al., 2007). *Pax8* expression correlates with epithelial thickening in all experiments in our study. However, further experiments are required to determine whether *Pax8* is directly responsible for regulating this morphological change in the otic placode.

The examination of *Notch1* mutants consistently showed a significant reduction in the size of the otic placode (Fig. 4B,C; Fig. 5). This small reduction is unlikely to be due to redundancy with other Notch genes, as there is no detectable expression of *Notch2-Notch4* in the otic placode (Lewis et al., 1998; Williams et al., 1995). A similar persistence of the otic placode is seen after treating chick otic ectoderm with DAPT, a γ -secretase inhibitor that abolishes Notch signaling (Abello et al., 2007; Daudet et al., 2007), in mice carrying mutations in *Pofut1*, an *O*-fucosyltransferase that is an essential component of the Notch pathway (Shi and Stanley, 2003) (C.S.J., unpublished), and in mice lacking *Rbpj/Rbsuh/CSL* (Oka et al., 1995; de la Pompa et al., 1997) (see Fig. S2C in the supplementary material). In all of these experiments, any reduction in placode size in the absence of Notch signaling is much more modest than that seen in mice in which Wnt signaling is blocked by the conditional deletion of β -catenin (Ohyama et al., 2006) (Fig. 2B).

Our results suggest a model (Fig. 7B,C) in which both Notch and Wnt signaling can specify the size of the epithelium destined to form the otic placode by virtue of their regulation of *Pax8*, *Foxi2* and *Jag1*, and by the induction of a thickened epithelial morphology. Our data from mice in which Wnt signaling is activated in the absence of *Notch1* (Fig. 6D), or in which Notch1 is activated in the absence of β -catenin (Fig. 3C), show that the two pathways can regulate these genes independently of each other. However, unlike the Wnt pathway, Notch signaling does not regulate the expression of otic placode-specific genes such as *Gbx2*, *Sox9* and *Hmx3*, as these are

unchanged in *cNIICD* mutants (Fig. 3D). In addition, our results, taken together with previously published studies, suggest that Notch signaling also acts to augment Wnt signaling during otic placode induction, rather than being absolutely necessary for placode induction

Notch signaling acts to augment Wnt signaling during otic placode induction

To integrate our gain- and loss-of-function experiments with the Notch and Wnt pathways, we propose a model in which some Notch pathway components, such as *Jag1*, are induced by Wnt signaling. Subsequently, activation of Notch1 by *Jag1* feeds back to augment the Wnt response (Fig. 7B). This feedback activity has no effect on the most medial regions of the pre-otic field – which receive the highest levels of Wnt signaling – but acts to increase Wnt signaling in mediolateral regions of ectoderm that receive modest to low levels of Wnt signaling. Thus, Notch-mediated feedback serves to sharpen and refine the initial mediolateral gradient of Wnt activity during the pre-otic field stage (Ohyama et al., 2006) into a more binary pattern at the otic placode stage, where Wnt signaling is either active (giving rise to the otic placode) or silenced (giving rise to epidermis; Fig. 7C).

Our data support this model in four ways. First, *Notch1* deficiency causes a reduction in the area and intensity of β -galactosidase activity in Wnt reporter mice, and a reduction of the domain of the Wnt-responsive gene *Dlx5* (Fig. 6C). However, loss of *Notch1* does not abolish the expression of either marker, consistent with the notion that Notch1 signaling augments the Wnt response but does not initiate it. Second, the reduction in Wnt signaling resulting from the loss of *Notch1* (Figs 4, 5) causes a consistent reduction in the size of the otic placode, but does not eliminate it entirely. The otic placode also forms in mice lacking other crucial components of the Notch pathway, such as *Pofut1* or *Rbpj/Rbsuh/CSL* (Oka et al., 1995; de la Pompa et al., 1997; Shi and Stanley, 2003). Third, mutation of *Notch1* has no effect on the size of the otic placode in embryos also expressing constitutively active β -catenin in the entire pre-otic field (Fig. 6D), presumably because cells expressing artificially high levels of activated β -catenin are not dependent on Notch1 function for the stabilization of otic fate. Finally, artificial NIICD activation throughout the pre-otic field greatly expands *Pax8* to the ventral pharynx, but this is not the case for *Dlx5* or Wnt activity (Fig. 6A). This suggests that ectopic activation of NIICD in regions of the pre-otic field that receive no Wnt signals is insufficient to augment or initiate the Wnt response (Fig. 7C). Furthermore, Wnt reporter expression is enhanced in regions receiving moderate levels of Wnt activity in *cNIICD* mutants (Fig. 6A). Although, the mechanism of how Notch signaling augments Wnt activity is not clear, this result suggests that it is unlikely that NIICD can directly activate transcription of Wnt-responsive genes by itself. A growing body of evidence suggests that Wnt and Notch pathways interact during cell fate determination (Aoyama et al., 2007; Arias and Hayward, 2006; Crosnier et al., 2006; Estrach et al., 2006; Fre et al., 2005). Notch signaling can act upstream of the Wnt pathway (Balint et al., 2005; Johnston and Edgar, 1998; Neumann and Cohen, 1996), or downstream (Estrach et al., 2006). Stimulation of the Wnt pathway can either antagonize or activate the Notch pathway in different contexts – for example, *dishevelled* can antagonize Notch signaling (Axelrod et al., 1996), whereas the downregulation of Gsk3 activity by Wnt signaling stimulates the Notch pathway (Espinosa et al., 2003). The Notch receptor is also able to antagonize β -catenin activity (Nicolas et al., 2003), sometimes in an NIICD-independent manner (Hayward et al., 2006; Hayward et al., 2005).

Taken together, our current and previously published data suggest a model of otic placode induction whereby FGF signaling initially establishes a *Pax2*⁺ pre-otic field that is then patterned by a gradient of Wnt signaling arising from the midline. Wnt signaling upregulates components of the Notch pathway, which then act locally to augment the Wnt response and to mediate the placode-epidermis fate decision in the pre-otic field.

We thank the following colleagues for generously providing transgenic mice for this study: Charles Murtaugh (*N1ICD* mice), Daniel Dufort (Wnt reporter mice), Ron Conlon (*Notch1* mutant mice), Tasuku Honjo (conditional *Rbpj* mice) and Mark Taketo (*cAct β-catenin* mice). We also thank Jeffrey Nye, Achim Gossler, Tim Mitsiadu, Ryoichiro Kageyama, Thomas Vogt and Andy McMahon for gifts of probes; Juan Llamas, Welly Makmura, Sheri Juntila, Francesca Della Ripa and Juemei Wang for excellent technical support; and for Groves and Segil lab members for help and advice during this project. This work was funded by the House Ear Institute, by a March of Dimes Research Grant (A.K.G.), and by RO1DC04675 (A.K.G.) and RO1DC06185 (A.K.G. and N.S.).

Supplementary material

Supplementary material for this article is available at <http://dev.biologists.org/cgi/content/full/135/13/2251/DC1>

References

- Abello, G., Khatri, S., Giraldez, F. and Alsina, B. (2007). Early regionalization of the otic placode and its regulation by the Notch signaling pathway. *Mech. Dev.* **124**, 631-645.
- Adam, J., Myat, A., Le Roux, I., Eddison, M., Henrique, D., Ish-Horowitz, D. and Lewis, J. (1998). Cell fate choices and the expression of Notch, Delta and Serrate homologues in the chick inner ear: parallels with *Drosophila* sense-organ development. *Development* **125**, 4645-4654.
- Ambler, C. A. and Watt, F. M. (2007). Expression of Notch pathway genes in mammalian epidermis and modulation by beta-catenin. *Dev. Dyn.* **236**, 1595-1601.
- Aoyama, K., Delaney, C., Varnum-Finney, B., Kohn, A. D., Moon, R. T. and Bernstein, I. D. (2007). The interaction of the Wnt and Notch pathways modulates Nk vs. T cell differentiation. *Stem Cells* **25**, 2488-2497.
- Arias, A. M. and Hayward, P. (2006). Filtering transcriptional noise during development: concepts and mechanisms. *Nat. Rev. Genet.* **7**, 34-44.
- Axelrod, J. D., Matsuno, K., Artavanis-Tsakonas, S. and Perrimon, N. (1996). Interaction between Wingless and Notch signaling pathways mediated by dishevelled. *Science* **271**, 1826-1832.
- Balint, K., Xiao, M., Pinnix, C. C., Soma, A., Veres, I., Juhasz, I., Brown, E. J., Capobianco, A. J., Herlyn, M. and Liu, Z. J. (2005). Activation of Notch1 signaling is required for beta-catenin-mediated human primary melanoma progression. *J. Clin. Invest.* **115**, 3166-3176.
- Barald, K. F. and Kelley, M. W. (2004). From placode to polarization: new tunes in inner ear development. *Development* **131**, 4119-4130.
- Braut, V., Moore, R., Kutsch, S., Ishibashi, M., Rowitch, D. H., McMahon, A. P., Sommer, L., Boussadia, O. and Kemler, R. (2001). Inactivation of the beta-catenin gene by Wnt1-Cre-mediated deletion results in dramatic brain malformation and failure of craniofacial development. *Development* **128**, 1253-1264.
- Bray, S. (1998). Notch signaling in *Drosophila*: three ways to use a pathway. *Semin. Cell Dev. Biol.* **9**, 591-597.
- Brooker, R., Hozumi, K. and Lewis, J. (2006). Notch ligands with contrasting functions: Jagged1 and Delta1 in the mouse inner ear. *Development* **133**, 1277-1286.
- Conlon, R. A., Reaume, A. G. and Rossant, J. (1995). Notch1 is required for the coordinate segmentation of somites. *Development* **121**, 1533-1545.
- Crosnier, C., Stamatou, D. and Lewis, J. (2006). Organizing cell renewal in the intestine: stem cells, signals and combinatorial control. *Nat. Rev. Genet.* **7**, 349-359.
- Daudet, N. and Lewis, J. (2005). Two contrasting roles for Notch activity in chick inner ear development: specification of prosensory patches and lateral inhibition of hair-cell differentiation. *Development* **132**, 541-551.
- Daudet, N., Ariza-McNaughton, L. and Lewis, J. (2007). Notch signalling is needed to maintain, but not to initiate, the formation of prosensory patches in the chick inner ear. *Development* **134**, 2369-2378.
- de la Pompa, J. L., Wakeham, A., Correia, K. M., Samper, E., Brown, S., Aguilera, R. J., Nakano, T., Honjo, T., Mak, T. W., Rossant, J. et al. (1997). Conservation of the Notch signalling pathway in mammalian neurogenesis. *Development* **124**, 1139-1148.
- Del Monte, G., Grego-Bessa, J., Gonzalez-Rajal, A., Bolos, V. and De La Pompa, J. L. (2007). Monitoring Notch1 activity in development: evidence for a feedback regulatory loop. *Dev. Dyn.* **236**, 2594-2614.
- Duncan, A. W., Rattis, F. M., DiMascio, L. N., Congdon, K. L., Pazianos, G., Zhao, C., Yoon, K., Cook, J. M., Willert, K., Gaiano, N. et al. (2005). Integration of Notch and Wnt signaling in hematopoietic stem cell maintenance. *Nat. Immunol.* **6**, 314-322.
- Espinosa, L., Ingles-Esteve, J., Aguilera, C. and Bigas, A. (2003). Phosphorylation by glycogen synthase Kinase-3{beta} down-regulates Notch Activity, a Link for Notch and Wnt pathways. *J. Biol. Chem.* **278**, 32227-32235.
- Estrach, S., Ambler, C. A., Lo Celso, C., Hozumi, K. and Watt, F. M. (2006). Jagged 1 is a {beta}-catenin target gene required for ectopic hair follicle formation in adult epidermis. *Development* **133**, 4427-4438.
- Fortini, M. E. and Artavanis-Tsakonas, S. (1994). The suppressor of hairless protein participates in notch receptor signaling. *Cell* **79**, 273-282.
- Fre, S., Huyghe, M., Mourikis, P., Robine, S., Louvard, D. and Artavanis-Tsakonas, S. (2005). Notch signals control the fate of immature progenitor cells in the intestine. *Nature* **435**, 964-968.
- Friesel, R. and Brown, S. A. (1992). Spatially restricted expression of fibroblast growth factor receptor-2 during *Xenopus* development. *Development* **116**, 1051-1058.
- Galceran, J., Sustmann, C., Hsu, S.-C., Folberth, S. and Grosschedl, R. (2004). LEF1-mediated regulation of Delta-like1 links Wnt and Notch signaling in somitogenesis. *Genes Dev.* **18**, 2718-2723.
- Groves, A. K. (2005). The induction of the otic placode. In *Development of the Inner Ear* (Springer Handbook of Auditory Research, Vol. 26) (ed. A. N. Popper, M. W. Kelley and D. K. Wu), pp. 10-42. New York: Springer Verlag.
- Groves, A. K. and Bronner-Fraser, M. (2000). Competence, specification and commitment in otic placode induction. *Development* **127**, 3489-3499.
- Haddon, C., Jiang, Y. J., Smithers, L. and Lewis, J. (1998). Delta-Notch signalling and the patterning of sensory cell differentiation in the zebrafish ear: evidence from the mind bomb mutant. *Development* **125**, 4637-4644.
- Hans, S., Liu, D. and Westerfield, M. (2004). Pax8 and Pax2a function synergistically in otic specification, downstream of the Foxi1 and Dlx3b transcription factors. *Development* **131**, 5091-5102.
- Harada, N., Tamai, Y., Ishikawa, T., Sauer, B., Takaku, K., Oshima, M. and Taketo, M. M. (1999). Intestinal polyposis in mice with a dominant stable mutation of the beta-catenin gene. *EMBO J.* **18**, 5931-5942.
- Hayward, P., Brennan, K., Sanders, P., Balayo, T., DasGupta, R., Perrimon, N. and Arias, A. M. (2005). Notch modulates Wnt signalling by associating with Armadillo/{beta}-catenin and regulating its transcriptional activity. *Development* **132**, 1819-1830.
- Hayward, P., Balayo, T. and Martinez Arias, A. (2006). Notch synergizes with axin to regulate the activity of armadillo in *Drosophila*. *Dev. Dyn.* **235**, 2656-2666.
- Johnston, L. A. and Edgar, B. A. (1998). Wingless and Notch regulate cell-cycle arrest in the developing *Drosophila* wing. *Nature* **394**, 82-84.
- Kageyama, R., Ohtsuka, T. and Kobayashi, T. (2007). The Hes gene family: repressors and oscillators that orchestrate embryogenesis. *Development* **134**, 1243-1251.
- Katoh, M. and Katoh, M. (2006). Notch ligand, JAG1, is evolutionarily conserved target of canonical WNT signaling pathway in progenitor cells. *Int. J. Mol. Med.* **17**, 681-685.
- Kiernan, A. E., Cordes, R., Kopan, R., Gossler, A. and Gridley, T. (2005). The Notch ligands DLL1 and JAG2 act synergistically to regulate hair cell development in the mammalian inner ear. *Development* **132**, 4353-4362.
- Kurooka, H., Kuroda, K. and Honjo, T. (1998a). Roles of the ankyrin repeats and C-terminal region of the mouse notch1 intracellular region. *Nucleic Acids Res.* **26**, 5448-5455.
- Kurooka, H., Kuroda, K., Honjo, T., Tani, S., Kurooka, H., Aoki, T., Hashimoto, N., Honjo, T., Nam, Y., Weng, A. P. et al. (1998b). Roles of the ankyrin repeats and C-terminal region of the mouse notch1 intracellular region. *Nucleic Acids Res.* **26**, 5448-5455.
- Ladher, R. K., Wright, T. J., Moon, A. M., Mansour, S. L. and Schoenwolf, G. C. (2005). FGF8 initiates inner ear induction in chick and mouse. *Genes Dev.* **19**, 603-613.
- Lai, E. C. (2004). Notch signaling: control of cell communication and cell fate. *Development* **131**, 965-973.
- Lamar, E., Deblandre, G., Wettstein, D., Gawantka, V., Pollet, N., Niehrs, C. and Kintner, C. (2001). Nrarp is a novel intracellular component of the Notch signaling pathway. *Genes Dev.* **15**, 1885-1899.
- Langford, P. J., Lan, Y., Jiang, R., Lindsell, C., Weinmaster, G., Gridley, T. and Kelley, M. W. (1999). Notch signalling pathway mediates hair cell development in mammalian cochlea. *Nat. Genet.* **21**, 289-292.
- Leger, S. and Brand, M. (2002). Fgf8 and Fgf3 are required for zebrafish ear placode induction, maintenance and inner ear patterning. *Mech. Dev.* **119**, 91-108.
- Lewis, A. K., Frantz, G. D., Carpenter, D. A., de Sauvage, F. J. and Gao, W.-Q. (1998). Distinct expression patterns of notch family receptors and ligands during development of the mammalian inner ear. *Mech. Dev.* **78**, 159-163.

- Lillevali, K., Haugas, M., Matilainen, T., Pussinen, C., Karis, A. and Salminen, M. (2006). Gata3 is required for early morphogenesis and Fgf10 expression during otic development. *Mech. Dev.* **123**, 415-429.
- Mackereth, M. D., Kwak, S. J., Fritz, A. and Riley, B. B. (2005). Zebrafish pax8 is required for otic placode induction and plays a redundant role with Pax2 genes in the maintenance of the otic placode. *Development* **132**, 371-382.
- Maroon, H., Walshe, J., Mahmood, R., Kiefer, P., Dickson, C. and Mason, I. (2002). Fgf3 and Fgf8 are required together for formation of the otic placode and vesicle. *Development* **129**, 2099-2108.
- Martin, K. and Groves, A. K. (2006). Competence of cranial ectoderm to respond to Fgf signaling suggests a two-step model of otic placode induction. *Development* **133**, 877-887.
- Mohamed, O. A., Clarke, H. J. and Dufort, D. (2004). Beta-catenin signaling marks the prospective site of primitive streak formation in the mouse embryo. *Dev. Dyn.* **231**, 416-424.
- Morsli, H., Choo, D., Ryan, A., Johnson, R. and Wu, D. K. (1998). Development of the mouse inner ear and origin of its sensory organs. *J. Neurosci.* **18**, 3327-3335.
- Murtaugh, L. C., Stanger, B. Z., Kwan, K. M. and Melton, D. A. (2003). Notch signaling controls multiple steps of pancreatic differentiation. *Proc. Natl. Acad. Sci. USA* **100**, 14920-14925.
- Nam, Y., Weng, A. P., Aster, J. C. and Blacklow, S. C. (2003). Structural requirements for assembly of the CSL-intracellular Notch1-Mastermind-like 1 transcriptional activation complex. *J. Biol. Chem.* **278**, 21232-21239.
- Neumann, C. J. and Cohen, S. M. (1996). A hierarchy of cross-regulation involving Notch, wingless, vestigial and cut organizes the dorsal/ventral axis of the *Drosophila* wing. *Development* **122**, 3477-3485.
- Nicolas, M., Wolfer, A., Raj, K., Kummer, J. A., Mill, P., van Noort, M., Hui, C. C., Clevers, H., Dotto, G. P. and Radtke, F. (2003). Notch1 functions as a tumor suppressor in mouse skin. *Nat. Genet.* **33**, 416-421.
- Nissen, R. M., Yan, J., Amsterdam, A., Hopkins, N. and Burgess, S. M. (2003). Zebrafish foxi one modulates cellular responses to Fgf signaling required for the integrity of ear and jaw patterning. *Development* **130**, 2543-2554.
- Norgaard, G. A., Jensen, J. N. and Jensen, J. (2003). FGF10 signaling maintains the pancreatic progenitor cell state revealing a novel role of Notch in organ development. *Dev. Biol.* **264**, 323-338.
- Novak, A., Guo, C., Yang, W., Nagy, A. and Lobe, C. G. (2000). Z/EG, a double reporter mouse line that expresses enhanced green fluorescent protein upon Cre-mediated excision. *Genesis* **28**, 147-155.
- Ohyama, T. and Groves, A. K. (2004a). Expression of mouse Foxi class genes in early craniofacial development. *Dev. Dyn.* **231**, 640-646.
- Ohyama, T. and Groves, A. K. (2004b). Generation of Pax2-Cre mice by modification of a Pax2 bacterial artificial chromosome. *Genesis* **38**, 195-199.
- Ohyama, T., Mohamed, O. A., Taketo, M. M., Dufort, D. and Groves, A. K. (2006). Wnt signals mediate a fate decision between otic placode and epidermis. *Development* **133**, 865-875.
- Oka, C., Nakano, T., Wakeham, A., de la Pompa, J. L., Mori, C., Sakai, T., Okazaki, S., Kawaichi, M., Shiota, K., Mak, T. W. et al. (1995). Disruption of the mouse RBP-J kappa gene results in early embryonic death. *Development* **121**, 3291-3301.
- Phillips, B. T., Bolding, K. and Riley, B. B. (2001). Zebrafish fgf3 and fgf8 encode redundant functions required for otic placode induction. *Dev. Biol.* **235**, 351-365.
- Raft, S., Nowotschin, S., Liao, J. and Morrow, B. E. (2004). Suppression of neural fate and control of inner ear morphogenesis by Tbx1. *Development* **131**, 1801-1812.
- Ricomagno, M. M., Martinu, L., Mulheisen, M., Wu, D. K. and Epstein, D. J. (2002). Specification of the mammalian cochlea is dependent on Sonic hedgehog. *Genes Dev.* **16**, 2365-2378.
- Riley, B. B. and Phillips, B. T. (2003). Ringing in the new ear: resolution of cell interactions in otic development. *Dev. Biol.* **261**, 289-312.
- Saint-Germain, N., Lee, Y. H., Zhang, Y., Sargent, T. D. and Saint-Jeanet, J. P. (2004). Specification of the otic placode depends on Sox9 function in *Xenopus*. *Development* **131**, 755-763.
- Schmidt-Ott, K. M., Masckauchan, T. N., Chen, X., Hirsh, B. J., Sarkar, A., Yang, J., Paragas, N., Wallace, V. A., Dufort, D., Pavlidis, P. et al. (2007). beta-catenin/TCF/Lef controls a differentiation-associated transcriptional program in renal epithelial progenitors. *Development* **134**, 3177-3190.
- Shi, S. and Stanley, P. (2003). Protein O-fucosyltransferase 1 is an essential component of Notch signaling pathways. *Proc. Natl. Acad. Sci. USA* **100**, 5234-5239.
- Shi, S., Stahl, M., Lu, L. and Stanley, P. (2005). Canonical Notch signaling is dispensable for early cell fate specifications in mammals. *Mol. Cell. Biol.* **25**, 9503-9508.
- Solomon, K. S., Kudoh, T., Dawid, I. B. and Fritz, A. (2003). Zebrafish foxi1 mediates otic placode formation and jaw development. *Development* **130**, 929-940.
- Solomon, K. S., Kwak, S. J. and Fritz, A. (2004). Genetic interactions underlying otic placode induction and formation. *Dev. Dyn.* **230**, 419-433.
- Streit, A. (2002). Extensive cell movements accompany formation of the otic placode. *Dev. Biol.* **249**, 237.
- Tani, S., Kurooka, H., Aoki, T., Hashimoto, N. and Honjo, T. (2001). The N- and C-terminal regions of RBP-J interact with the ankyrin repeats of Notch1 RAMIC to activate transcription. *Nucleic Acids Res.* **29**, 1373-1380.
- Tanigaki, K., Han, H., Yamamoto, N., Tashiro, K., Ikegawa, M., Kuroda, K., Suzuki, A., Nakano, T. and Honjo, T. (2002). Notch-RBP-J signaling is involved in cell fate determination of marginal zone B cells. *Nat. Immunol.* **3**, 443-450.
- Torres, M. and Giraldez, F. (1998). The development of the vertebrate inner ear. *Mech. Dev.* **71**, 5-21.
- Vendrell, V., Carnicero, E., Giraldez, F., Alonso, M. T. and Schimmang, T. (2000). Induction of inner ear fate by FGF3. *Development* **127**, 2011-2019.
- Williams, R., Lendahl, U. and Lardelli, M. (1995). Complementary and combinatorial patterns of Notch gene family expression during early mouse development. *Mech. Dev.* **53**, 357-368.
- Wright, T. J. and Mansour, S. L. (2003). Fgf3 and Fgf10 are required for mouse otic placode induction. *Development* **130**, 3379-3390.
- Wright, T. J., Ladher, R., McWhirter, J., Murre, C., Schoenwolf, G. C. and Mansour, S. L. (2004). Mouse FGF15 is the ortholog of human and chick FGF19, but is not uniquely required for otic induction. *Dev. Biol.* **269**, 264-275.
- Zhou, Y. X. and Armstrong, R. C. (2007). Interaction of fibroblast growth factor 2 (FGF2) and notch signaling components in inhibition of oligodendrocyte progenitor (OP) differentiation. *Neurosci. Lett.* **421**, 27-32.