

RESEARCH ARTICLE

Specification of neuronal subtypes by different levels of Hunchback

Marta Moris-Sanz, Alicia Estacio-Gómez, Javier Álvarez-Rivero and Fernando J. Díaz-Benjumea*

ABSTRACT

During the development of the central nervous system, neural progenitors generate an enormous number of distinct types of neuron and glial cells by asymmetric division. Intrinsic genetic programs define the combinations of transcription factors that determine the fate of each cell, but the precise mechanisms by which all these factors are integrated at the level of individual cells are poorly understood. Here, we analyzed the specification of the neurons in the ventral nerve cord of *Drosophila* that express Crustacean cardioactive peptide (CCAP). There are two types of CCAP neurons: interneurons and efferent neurons. We found that both are specified during the Hunchback temporal window of neuroblast 3–5, but are not sibling cells. Further, this temporal window generates two ganglion mother cells that give rise to four neurons, which can be identified by the expression of *empty spiracles*. We show that the expression of Hunchback in the neuroblast increases over time and provide evidence that the absolute levels of Hunchback expression specify the two different CCAP neuronal fates.

KEY WORDS: *Drosophila*, Central nervous system, CCAP, Bursicon, Cell fate specification, Temporal identity factors, Hunchback

INTRODUCTION

During embryonic development, neuronal stem cells actively proliferate and generate the enormous variety of cell types found in the central nervous system (CNS). It is generally assumed that combinations of transcription factors in the progenitor cell, which are spatially and temporally regulated in very sophisticated ways, determine the sets of characteristics that define the different cell types. How the corresponding states are set at the cellular level is far from clear (Gaspard and Vanderhaeghen, 2010). Given the complexity of the process, the choice of an appropriate model system for its study is crucial. The *Drosophila* ventral nerve cord (VNC), which is the equivalent of the vertebrate spinal cord, has provided an important model system for studying the molecular mechanisms underlying neuronal cell fate specification (Technau et al., 2006).

A combination of lineage studies and molecular genetics approaches has revealed some general rules by which the embryonic neuroectoderm is patterned along the anterior-posterior and dorsal-ventral axes of the *Drosophila* embryo. The process generates an invariant array of 60 neuroblasts (NBs) per segment, bilaterally located in mirror-image hemisegments. Each one of the 30 pairs of NBs generates, by several rounds of asymmetric

division, an invariant and unique lineage. In each division the NB self-renews and buds off a daughter cell, called a ganglion mother cell (GMC), which divides once to generate two sibling cells that differentiate as neurons or glial cells (Doe, 2008; Knoblich, 2008).

NBs sequentially express a series of genes, with periods of expression that define temporal windows, in the sequence: *hunchback (hb)*→*Kruppel (Kr)*→*pdm1 (nubbin – FlyBase)*/*pdm2* (henceforth *pdm*)→*castor (cas)*→*grainy head (grh)* (Brody and Odenwald, 2000; Cleary and Doe, 2006; Grosskortenhaus et al., 2005, 2006; Isshiki et al., 2001; Kambadur et al., 1998; Mettler et al., 2006; Novotny et al., 2002; Pearson and Doe, 2003; Tran and Doe, 2008). The expression of these temporal identity factors confers the competence to specify particular cell fates; thus, early-born neurons are specified by the expression of Hb, and, if expression of Hb is artificially extended, early neuronal fates continue to be specified (Isshiki et al., 2001; Pearson and Doe, 2003).

Many lineages contain broad temporal windows within which more than one neural fate is generated. This raises the question of how such temporal windows are subdivided. This issue is poorly understood and has only been addressed for the Cas temporal window of the well-characterized lineage of NB5–6. In this case, two sequential feed-forward loops triggered by Cas specify four distinct neuronal fates (Baumgardt et al., 2009).

Because of their restricted patterns of expression, neuropeptides are often used as terminal differentiation markers for specific subsets of neurons (Nässel, 2002). In this report we have chosen the set of neurons that express Crustacean cardioactive peptide (CCAP) and Bursicon (Burs) to study the patterning of the CNS. The CCAP neuropeptide is widespread in invertebrates. In addition to its cardioacceleratory action, it is also involved in the control of ecdysis (Dulcis et al., 2005; Ewer, 2005; Mesce and Fahrbach, 2002; Park et al., 2003). The Burs neuropeptide, which is also found in other insects, is a tanning factor involved in the control of ecdysis. The active form of Burs is a heterodimer composed of Burs α and Burs β (Pburs – FlyBase). CCAP and Burs are co-expressed in a set of neurons of the ventral ganglion, and genetic evidence confirms that these neurons play a key role in head eversion and leg and wing expansion at pupal ecdysis (Dewey et al., 2004; Peabody et al., 2008). CCAP/Burs-expressing neurons in the most anterior abdominal segments also express myoinhibitory peptides (Mip, also known as AstB), which are also involved in regulating ecdysis (reviewed by Nässel, 2002; Nässel and Winther, 2010). In summary, the complex set of neuropeptides expressed by these neurons confers their crucial roles in the networks that control the different phases of ecdysis (Kim et al., 2006).

In the VNC of first instar larvae there are two types of CCAP-expressing neurons: interneurons and efferent neurons. Our goals in this work were to identify the progenitor NB(s) of these neurons and the mechanisms by which their different identities are established. We found all CCAP neurons belong to the lineage of NB3–5 that can be identified by the expression of *empty spiracles (ems)*. Furthermore,

Centro de Biología Molecular-Severo Ochoa (CSIC-UAM), c./Nicolás Cabrera 1, Universidad Autónoma, Madrid 28049, Spain.

*Author for correspondence (diazbenjumea@cbm.csic.es)

Received 27 May 2014; Accepted 3 September 2014

these neurons are not sibling cells but are generated in the same temporal window, namely that of Hb. In addition, we provide evidence that different levels of Hb expression in the NB subdivide its temporal window and determine the two different fates of the postmitotic neurons, and these in turn express different levels of Hb, which is crucial for the specification of different neuronal subtypes.

RESULTS

CCAP neurons as a model system to study neural fate specification

The onset of CCAP expression in the VNC starts in the 18-h-old embryo and is observed in a group of 13 interneurons (INs) per hemiganglion (the right or left half of the ventral ganglion): one in each hemisegment from the first subesophageal segment (SE1) to the seventh abdominal segment (A7) (Fig. 1A,B). Distinct CCAP-expressing neurons appear in the T3–A4 segments in the first instar larva; these are efferent neurons (ENs) that exit the ganglion via the lateral segmental nerve and can be identified by the expression of

Dachshund (Dac) (Fig. 1C) (Park et al., 2003; Santos et al., 2007; Veverytsa and Allan, 2011; Vomel and Wegener, 2007). Although the ENs of segment T3 always express CCAP in the first instar larva, in A1–4 segments only one or two ENs per hemiganglion usually expresses CCAP at this stage, with expression in the others appearing sequentially during larval development (Fig. 1D). Later, in pupal development, one EN in each of hemisegments A5–7 expresses CCAP. It is important to note that, in first instar larvae, CCAP expression is stronger in the more anterior segments and gradually decays in the more posterior segments.

Bursα expression was observed in the first instar larva in the same cells that express CCAP and, in addition, in the ENs of segments A1–4, which will express CCAP in the third instar larva (Kim et al., 2006). Thus, CCAP and Bursα are co-expressed in the VNC of mature larvae. Unlike CCAP, Bursα expression was stronger in the more posterior segments. Hereafter, we will refer to those cells that express CCAP/Bursα as CCAP neurons, although in several experiments, for convenience, we examined the expression of Bursα. CCAP expression in segments 8–9 of first instar larva ganglion was very weak and difficult to score when it appeared, and Bursα expression showed a very low penetrance; thus, neurons of these segments were not quantified.

All CCAP-expressing neurons are generated from NB3-5

We first aimed to identify the progenitor NB of the CCAP neurons. We used a set of previously described molecular markers that allow the identification of NBs at different embryonic stages (Doe, 1992). The expression of many of these markers is maintained, at least temporarily, in the progeny that they generate. CCAP neurons do not express *mirror* (*mirr*)-*lacZ*, *gooseberry* (*gsb*)-*lacZ* or Engrailed (*En*) (Fig. 2A–C), which indicates that they derive either from a NB of row 4, or from NB3-1, NB3-3 or NB3-5.

Although CCAP neurons did not express *Ems*, some expression of β-galactosidase (*ems-Gal4*>*UAS-lacZ*) was observed, which suggests that they expressed it during embryogenesis (Fig. 2D; supplementary material Fig. S1D), and, moreover, CCAP neurons are mostly lost in *ems*¹ mutants (Fig. 2E; supplementary material Table S1).

Only three NBs express *Ems* in the ventral ganglion (NB3-3, NB3-5 and NB4-4; supplementary material Fig. S1A–C) (Birkholz et al., 2013). We excluded NB3-3, as CCAP neurons do not express *eagle* (*eg*)-*Gal4*>*UAS-GFP* and it has been shown that *eg* expression is maintained by the NB3-3 lineage at least until late embryogenesis (Fig. 2F; supplementary material Fig. S1E,E') (Tsuji et al., 2008). NB4-4 expresses *huckebein* (*hkb*)-*lacZ*, and although CCAP neurons do not express it (Fig. 2G), we cannot definitively exclude NB4-4 as *hkb* expression is not maintained. Together, these results, in addition to their lateral position, suggest that CCAP neurons derive from either NB3-5 or NB4-4. The same results were obtained from scoring either CCAP-INs or CCAP-ENs in the different segments (supplementary material Fig. S1D–E'; data not shown).

NB4-4 delaminates at early stage 11 and NB3-5 delaminates at stage 8. To distinguish between these two NBs, we labeled the neurons generated at or before stage 10 (with *elav-Gal4* *UAS-flp* *tub-Gal80*^[ts] *Act5C*>*stop*>*lacZ*; raised at 29°C and shifted to 17°C at stage 10; see Materials and Methods for details). If CCAP neurons are labeled this would indicate that they come from NB3-5, and this is indeed what we observed (Fig. 2H). As a control we labeled the abdominal leucokinergic (ABLK) neuron, which derives from NB5-5 and also delaminates at stage 11 (Benito-Sipos et al., 2010), and we never observed labeled ABLK neurons (data not shown). We confirmed this result using *ems-Gal4* under the same experimental

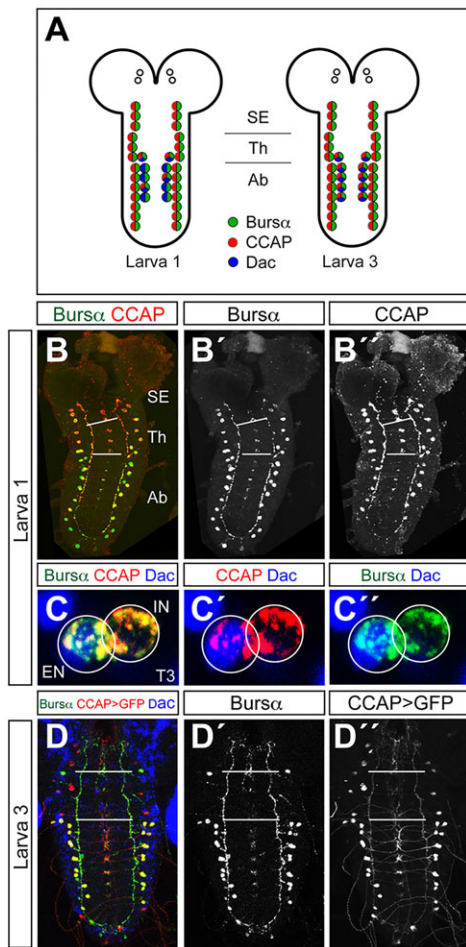


Fig. 1. Pattern of expression of CCAP and Bursα in the VNC.

(A) Scheme showing the pattern of expression of neuropeptides CCAP and Bursα in the ventral ganglion of first (left) and third (right) instar *Drosophila* larvae. Efferent neurons, identified by the expression of Dac, are indicated. (B–B'') Expression of CCAP (red) and Bursα (green) in first instar ventral ganglia. Merged and separate channels are shown. (C–C'') Magnified view of a T3 segment showing the expression of CCAP (red), Bursα (green) and Dac (blue); the midline is on the left. (D–D'') Expression CCAP-*Gal4* *UAS-GFP* (red) and Bursα (green) in third instar ventral ganglia. White bars indicate boundaries between subesophageal (SE), thoracic (Th) and abdominal (Ab) segments. Here and in subsequent figures, anterior is up in all ganglia.

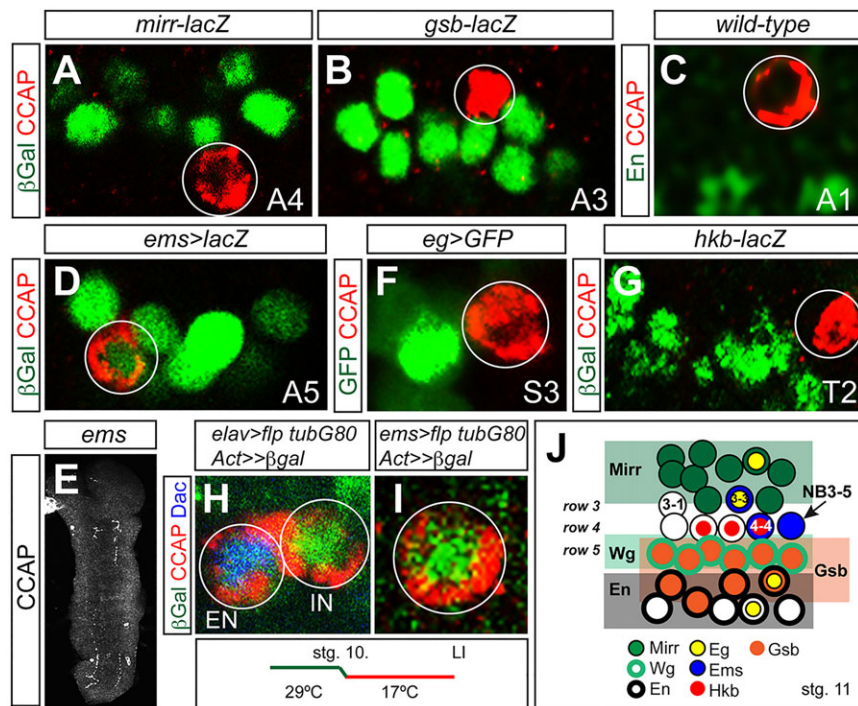


Fig. 2. NB3-5 is the progenitor of all CCAP neurons in the VNC. (A–G) Labeling for CCAP and β-galactosidase (β-gal) in *mirr-lacZ* (A), *gsb-lacZ* (B), *ems-Gal4 UAS-lacZ* (D) and *hkb-lacZ* (G), for CCAP and En in wild type (C), for CCAP in *ems*¹ (E) and for CCAP and GFP in *eg-Gal4 UAS-GFP* (F). CCAP, red (except white in E); β-gal (A,B,D,G), En (C) or GFP (F), green. The segments shown in each figure are indicated bottom right. (H,I) Labeling for CCAP (red), β-gal (green) and Dac (blue) in *elav-Gal4 UAS-flp tub-Gal80^{ts} Act5C>stop>lacZ* (H) or *ems-Gal4 UAS-flp tub-Gal80^{ts} Act5C>stop>lacZ* (I) grown at 29°C and shifted to 17°C at stage 10 of embryonic development. CCAP-expressing neurons were labeled in both experiments, indicating that they had been generated before stage 10. All images correspond to first instar larval ganglia. (J) Summary of the results presented in this figure, showing the pattern of NBs in a right hemisegment of a stage 11 embryo. NB3-5 is indicated. The pattern of expression of the different markers is illustrated. Anterior is up and the midline is on the left.

conditions; this cassette will only be activated in the *ems*-expressing early delaminating NBs, and since NB3-3 and NB4-4 delaminate at stage 11, neither of them, nor their progeny, should be labeled. Again, the CCAP neurons were labeled (Fig. 2I), which strongly suggests that NB3-5 is their sole progenitor (Fig. 2J). Thus, we conclude that all CCAP neurons from the ventral ganglion derive from NB3-5.

All CCAP-expressing neurons are generated in the Hb temporal window

Embryonic NBs progress through a cascade of temporal windows defined by the sequential expression of a series of transcription factors (Brody and Odenwald, 2000; Isshiki et al., 2001; Kambadur et al., 1998). These temporal factors are not mere molecular markers, since their expression in NBs contributes to the identity of the cells in which they are expressed.

To identify the temporal window in which CCAP neurons are generated we tested the expression of CCAP in mutants for all temporal genes (supplementary material Table S1), and found a clearcut loss of CCAP expression only in *hb* mutants (Fig. 3A). Individual mutants for *Kr*, *pdm*, *cas* or *grh*, or embryos in which these genes were overexpressed, showed no significant changes in the pattern of CCAP expression (supplementary material Fig. S2). To confirm this result we overexpressed *hb* with a pan-NB driver (*insc-Gal4 UAS-hb*) and observed one or two additional CCAP neurons per hemisegment (Fig. 3B,D). We also tested CCAP expression in a *seven up* (*svp*) mutant; *svp* encodes a COUP-TF nuclear receptor and is required to close the Hb temporal window (Grosskortenhaus et al., 2005; Kanai et al., 2005; Mettler et al., 2006). In *svp* mutants we expect to find extra CCAP neurons, as when *hb* is overexpressed, and this is indeed what we observed (Fig. 3C,D). We observed the same outcome in all the subesophageal, thoracic and abdominal segments and thus conclude that all CCAP neurons from the ventral ganglion are generated during the Hb temporal window.

It is important to note that, in both the Hb overexpression experiment and the *svp* mutant, the extra CCAP neurons (red circles

in Fig. 3D) are INs, as shown by the absence of Dac expression. This led us to suggest that the CCAP-EN is generated first, followed by the CCAP-IN (see below).

Analysis of the early lineage of NB3-5

We next aimed to establish in more detail the early lineage of NB3-5. We took advantage of the fact that the only NB that expresses *Ems* before stage 11 is NB3-5. We stained for *Ems*, *Hb*, *Kr*, *Pdm* and, to distinguish GMCs from neurons, *Deadpan* (*Dpn*), a marker for NBs and GMCs (Fig. 4A–E; supplementary material Fig. S1A–C and Fig. S3A–D') (Bier et al., 1992).

NB3-5 initially expresses *Hb*, *Kr* and *Pdm* and generates a first GMC that divides to produce two cells that express all of these markers. At stage 10 the expression of *Pdm* is lost, but the expression of *Hb* and *Kr* is maintained and the NB divides to generate the second GMC that generates two more cells. At early stage 11 the NB only expresses *Kr* and generates the third GMC that produces two cells. At late stage 11 it expresses *Pdm* and generates the fourth GMC that again produces two cells. From this stage onwards it was difficult to follow the lineage, as NB3-3 and NB4-4, which also express *Ems*, have delaminated by this time, and cells from the three lineages become intermingled, which does not permit an unambiguous identification of the NB3-5 progeny. We conclude that, in the Hb temporal window, NB3-5 divides twice to generate four cells, here consisting of CCAP-EN and CCAP-IN, and two other cells with unknown fates (supplementary material Fig. S3E).

As in segments T3–A4, two cells express CCAP, namely one IN and one EN (Fig. 1A). We aimed to establish whether they are sibling cells and, if not, what their order of appearance is in the lineage. Unfortunately, we lack molecular markers that would allow us to identify CCAP neurons at these early stages, since CCAP expression begins at stage 17 of embryogenesis. To circumvent this problem we analyzed GFP expression in CCAP neurons from embryos of the genotype *elav-Gal4 UAS-GFP tub-Gal80^{ts}* raised at 30°C and shifted to 17°C at early stage 9, since the data presented above indicate that CCAP neurons are born between stage 9 and

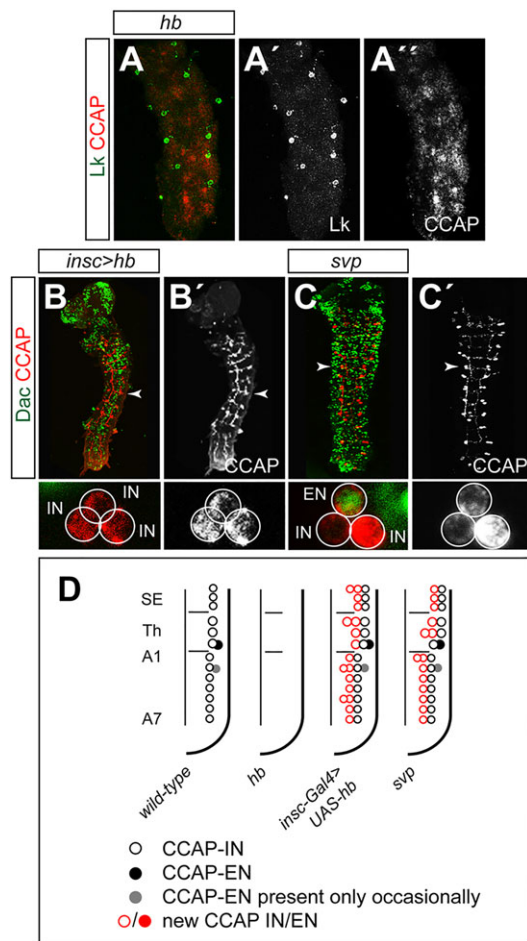


Fig. 3. All CCAP neurons in the VNC are specified in the Hb temporal window. (A–A') Leucokinin (Lk; green) and CCAP (red) expression in *hb^{FB} hb^{P1}*. Lk expression is unaffected, whereas CCAP expression is lost. Lk is shown as a control, as Lk-expressing cells are generated in the Cas temporal window (Benito-Sipos et al., 2010). (B–C') Dac (green) and CCAP (red) expression in *insc-Gal4 UAS-hb* (B) and *svp¹* (C). Magnified views of hemisegments A4 (B,B') and A1 (C,C') (arrowheads) are shown at the bottom of each figure. (D) Schematic representation of right hemiganglia summarizing the phenotypes observed. Circles indicate wild-type (black) and new (red) cells expressing CCAP. Gray circles indicate CCAP expression that appears randomly in A1–4 segment wild-type ganglia of first instar larvae (see Fig. 1A). Full and empty circles represent EN and IN, respectively. Horizontal bars indicate the boundaries between subesophagus, thorax and abdomen.

early stage 11. If we found cases in which only one of the CCAP neurons was labeled, this would mean that they were not siblings, and the labeled cell would be that which was generated first. In fact, we found several cases in which the CCAP-EN was the only CCAP neuron labeled, and the CCAP-IN was not labeled at all. This indicates that the two CCAP neurons are not siblings and that the CCAP-EN is generated first (Fig. 4F; supplementary material Fig. S4).

To corroborate these conclusions we conducted a cell lineage assay, labeling the progeny of NBs by injecting BrdU into stage 9 embryos (see Materials and Methods for details). BrdU is incorporated during the S phase of proliferating cells and labels all their progeny from then on; therefore, if CCAP neurons were not siblings, we would expect to find cases in which only one of them was labeled, as the NB would have incorporated BrdU in the S phase between the two mitoses that generated the two neurons (Novotny et al., 2002; Prokop and Technau, 1991); in this situation, the

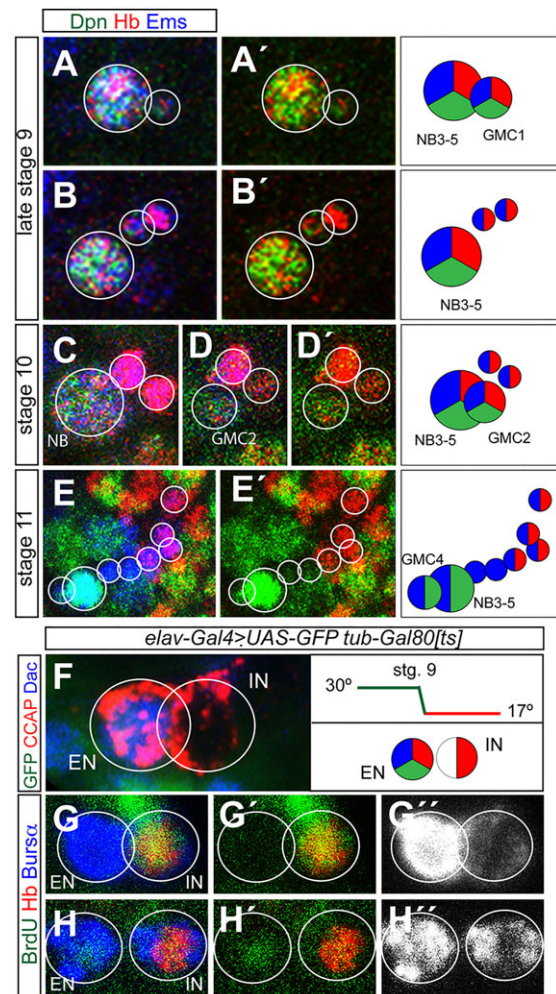


Fig. 4. The early lineage of NB3-5. (A–E) Staining for Dpn (green), Hb (red) and Ems (blue) in embryos of stages 9/10 (A,B), 10 (C,D) and 11 (E). White circles indicate NB3-5 and its progeny, identified by expression of Ems. Dpn allows the identification of the NB and GMCs. C and D are two focal planes of the same ganglion showing the NB (C) and GMC2 (D). The green and red channels of A,B,D,E are shown in A',B',D',E'. To the right are graphic representations in which circles represent cells expressing the indicated markers; NB3-5 and GMCs are indicated; midline is to the right, anterior is up. (F) Staining for GFP (green), CCAP (red) and Dac (blue) in *elav-Gal4 UAS-GFP tub-Gal80^{ts}* first instar larvae grown at 30°C and shifted to 17°C at stage 9. Only the CCAP-EN is labeled with GFP. To the right is a graphic representation of the experimental scheme and of the patterns of expression. Separate channels of this figure are shown in supplementary material Fig. S4. (G–H'') Staining for BrdU (green), Hb (red) and Bursα (blue) in first instar larvae of embryos injected with BrdU at stage 9. The high level of Hb expression permits identification of the IN. (G) Only the IN is labeled with BrdU, suggesting that BrdU incorporation took place after generation of the EN and before generation of the IN. (H) Both EN and IN are labeled with BrdU. Green/red (G',H') and blue (G'',H'') channels are shown.

labeled neuron would be that which was generated second. We observed several cases in which only the CCAP-IN was labeled, and no instances in which only the CCAP-EN was labeled (Fig. 4G–H'').

Thus, these results all agree in showing that the two CCAP neurons are not sibling cells and that the CCAP-EN is generated first.

Role of Notch in CCAP specification

NBs divide asymmetrically to self-renew and generate a GMC that divides once to generate two sibling cells that usually acquire different

fates. The Notch signaling pathway plays a role in distinguishing the fates of these two postmitotic cells (fates A and B) (Udolph et al., 2009). To address the role of Notch in the specification of CCAP neurons we examined its expression in mutants of *sanpodo* (*spdo*), a gene required for asymmetric cell division (Babaoglan et al., 2009). Although *spdo* mutants barely survive until late embryogenesis, we observed that both CCAP neurons, i.e. IN and EN, were duplicated in thoracic and abdominal segments (Fig. 5A–B",E; in these experiments we labeled the expression of *Bursα* instead of CCAP, as *Bursα* expression is stronger in the abdominal segments at this stage and thus easier to identify). This confirms that CCAP-EN and CCAP-IN are not sibling cells and suggests that Notch signaling is OFF (fate B) in CCAP neurons and ON (fate A) in their respective sibling cells. Thus, compromising Notch signaling is sufficient to transform fate A into fate B and generate two CCAP-ENs and two CCAP-INs.

Programmed cell death in the NB3-5 lineage

A number of cells generated during embryonic neurogenesis undergo programmed cell death (PCD). A comparative analysis of the number of cells generated during embryonic neurogenesis in

wild-type and in PCD-deficient [*Df(3L)H99*] embryos indicated that ~37% of the cells died by apoptosis (Rogulja-Ortmann et al., 2007). Specifically, in the NB3-5 lineage, there were seven more cells in *Df(3L)H99* than in wild-type embryos [19–24 cells in wild type and 26–31 cells in *Df(3L)H99*]. We did not observe any increase in the number of *Ems/Hb*-expressing cells in *Df(3L)H99* embryos at early stage 11 (data not shown). We examined whether the number of CCAP neurons was altered in *Df(3L)H99* embryos and found that an extra CCAP cell appeared in segments SE1–T2, whereas in T3 and the abdominal segments the number was not altered (Fig. 5C–C",E). Since these extra CCAP cells expressed *Dac*, these results suggest that the CCAP-EN, which in the wild-type ganglion is only found in segments T3–A4, dies by apoptosis in segments SE1–T2. To confirm this we examined *Df(3L)H99 spdo^{G104}* ganglia and observed an additive phenotype. This was especially informative in the SE segments where, on the one hand, the apoptosis of the EN was rescued, and, on the other hand, both the EN and the IN were duplicated (Fig. 5D–D",E).

Different levels of Hb expression determine distinct neuronal fates

The above results indicate that both CCAP neurons are generated in the Hb temporal window. We then considered how these two cell fates were specified. One possibility is that different levels of Hb expression determine the different identities. During early embryo development Hb activates or represses different target genes in a concentration-dependent manner (Hülskamp et al., 1990; Schulz and Tautz, 1994; Struhl et al., 1992).

To assess whether different levels of Hb expression determine distinct neuronal fates, we first analyzed Hb expression in NB3-5 and observed that it increased over time from late stage 8 to stage 10, falling off quickly at stage 11 (Fig. 6A; supplementary material Table S2). We then stained Hb in CCAP neurons and observed that CCAP-IN (*Dac*[−]) expressed a high level of Hb and CCAP-EN (*Dac*⁺) a very low level of Hb (Fig. 6B–B"). This result suggests that the CCAP-IN fate is specified in the NB that expresses the higher level of Hb, and that specification also requires the maintenance of a high level of Hb expression in the postmitotic cell. To test this idea, we overexpressed Hb in neurons and monitored EN fate by assessing the expression of *Dac* (*elav-Gal4 UAS-hb*). In first instar larvae we found, in each segment from SE1 to A7, two CCAP cells, neither of which expressed *Dac* (Fig. 6C,C'). It is important to note that in wild-type ganglia we only observe two CCAP cells (one IN and one EN) in T3–A4, since in the more anterior segments (SE1–T2) CCAP-EN is not present and in the more posterior segments (A5–7) CCAP expression in EN starts later, although these cells are themselves generated during embryonic neurogenesis (Veverlytsa and Allan, 2012). Thus, the lack of expression of *Dac* and the early onset of CCAP expression indicate that the sustained high level of Hb expression in postmitotic cells transforms CCAP-ENs into CCAP-INs. We also observed that the number of cells expressing *Dac* was strongly reduced compared with wild-type ganglia (Fig. 6D,E). These results suggest that *dac* can be a direct target of Hb (see Discussion).

To strengthen this conclusion we monitored the axon projections of the CCAP-ENs in both wild-type and *elav-Gal4 UAS-hb* ganglia of first instar larvae. In wild type we observed an axon emerging from the EN, whereas in *elav-Gal4 UAS-hb* we never observed these efferent axonal projections, indicating that they no longer exit the ganglion as EN but instead seem to behave as CCAP-IN (Fig. 6F,G). It is also important to note that in a *dac* mutant we observed no change in the pattern or onset of CCAP expression or in the number

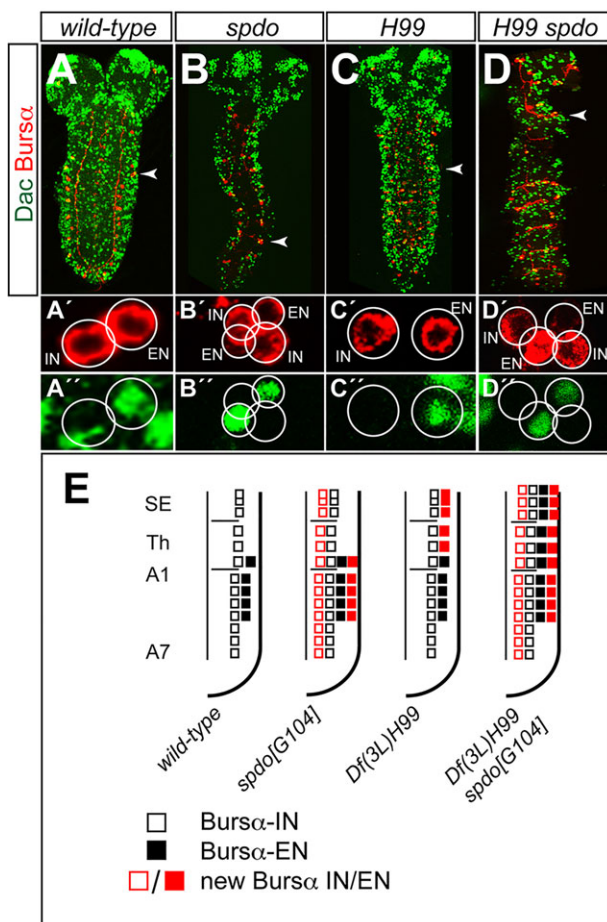


Fig. 5. The role of Notch and PCD in the specification of CCAP neurons. (A–D) Expression of *Dac* (green) and *Bursα* (red) in wild-type (A), *spdo^{G104}* (B), *Df(3L)H99* (C) and *Df(3L)H99 spdo^{G104}* (D) first instar larvae. The red (A'–D') and green (A''–D'') channels of a magnified hemisegment (arrowheads) are shown separately beneath. (E) Summary of the phenotypes in this figure. Squares represent cells expressing *Bursα* in the ventral ganglion of first instar larvae (see Fig. 1A); other symbols as in Fig. 3. Note that *Bursα*/*Dac* labeling allows the detection of ENs in T3–A4 in first instar larvae; the onset of CCAP expression in these neurons occurs later on development (Fig. 1A).

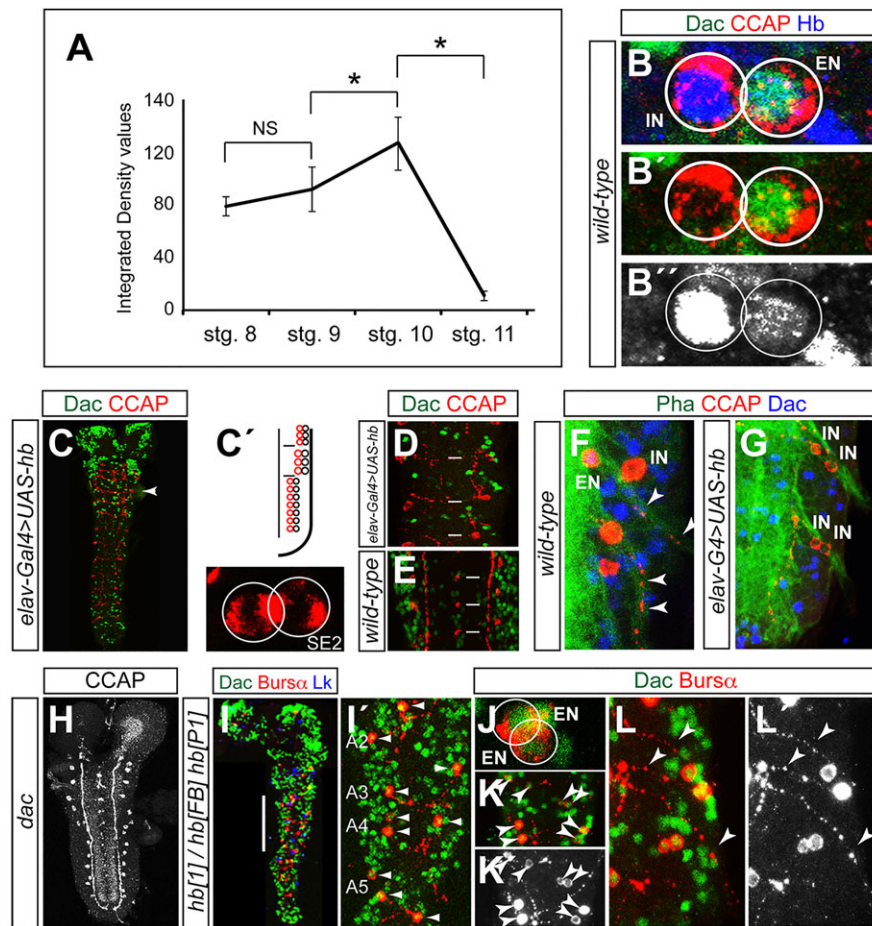


Fig. 6. CCAP-IN and CCAP-EN express different levels of Hb. (A) Levels of Hb expression (integrated density values in thousands of pixels; $n=6$ at each stage; for details see Materials and Methods and supplementary material Table S2) in the NB3-5 of stages 8–11. * $P<0.01$, two-tailed Student's t -test; NS, not significant. (B–B'') Expression of Dac (green), CCAP (red) and Hb (blue) in the CCAP neurons of a wild-type first instar larva. Green/red (B') and blue (B'') channels are shown separately. Hb expression is very strong in the CCAP-IN and very weak in the CCAP-EN (B''), as identified by the expression of Dac in the EN (B'). (C) Expression of Dac (green) and CCAP (red) in *elav-Gal4 UAS-hb*. A magnified view of a hemisegment (arrowhead) is shown to the right. There are two CCAP neurons in each hemisegment and neither expresses Dac. (C') Schematic of the phenotype in C. (D,E) Expression of Dac (green) and CCAP (red) in *elav-Gal4 UAS-hb* (D) and wild type (E). Three abdominal segments of first instar larva ganglia are shown (white bars). Note the reduction in the number of cells in *elav-Gal4 UAS-hb* expressing Dac. (F,G) Phalloidin labeling (green) and labeling for CCAP (red) and Dac (blue), showing the projection of efferent axons (arrowheads) in wild-type (F) and *elav-Gal4 UAS-hb* (G) first instar larvae. (H) CCAP expression in *dac* is unaffected. (I,I') Dac (green), Bursα (red) and Lk (blue) expression in *hb¹/hb^{FB} hb^{P1}* first instar larva. The expression of Lk is unaffected in *hb* mutants, which permits the identification of the abdominal segments (Benito-Sipos et al., 2010). The white bar indicates the area magnified in I' (in which only green and red channels are shown). There are one or two ENs per hemisegment (arrowheads in I') and INs are not found, suggesting they are lost or converted into ENs. (J) Magnified view showing an *hb¹/hb^{FB} hb^{P1}* abdominal segment with two ENs. (K,K') Magnified view showing duplications of ENs on both sides of two segments (arrowheads). (L,L') Magnified view of CCAP-ENs showing the efferent contralateral axons (arrowheads). The red channel (Bursα) is shown separately in white (K',L').

of CCAP neurons, which clearly indicates that overexpression of Hb not only removes Dac expression from CCAP-ENs but also transforms them into CCAP-INs (Fig. 6H).

The model that we propose is that the absolute level of Hb expression in the NB determines the fate of the CCAP neuron: high in CCAP-IN and low in CCAP-EN. If so, reducing the level of Hb expression should convert the CCAP-INs to CCAP-ENs. To test this prediction we labeled Bursα expression in an *hb* hypomorphic condition (*hb¹/hb^{FB} hb^{P1}*) and observed that INs in SE1–T2 segments were lost. In segments T3–A4 we observed one or two CCAP neurons per hemisegment, all of which expressed Dac (Fig. 6I–K') and produced axons that exited the ganglion (Fig. 6L,L'). These findings indicated that, in the *hb* hypomorphic condition, CCAP-INs are either lost or transformed into ENs.

Together, these results support the view that the absolute level of Hb expression in NB3-5 determines CCAP neuronal subtype.

DISCUSSION

In this study we analyzed how CCAP-expressing neurons are specified. We obtained evidence that both the CCAP-ENs and CCAP-INs of all embryonic segments are generated by NB3-5. Our results also indicate that CCAP neurons are generated in the Hb temporal window, are not sibling cells and that the CCAP-ENs are generated first followed by the CCAP-INs (Fig. 7). Although the Hb temporal window in NB3-5 generates two GMCs that can be distinguished by the expression of Pdm in GMC1, Pdm does not seem to play any role in the specification of these neurons, as we did not observe any phenotype in *pdm* mutants.

These findings raised the question of how these two neuronal fates are generated, and the results that we present here suggest that different levels of Hb expression specify them. The evidence for this is as follows. First, Hb expression in NB3-5 increases over time from stage 9 to early stage 11, then its expression quickly fades,

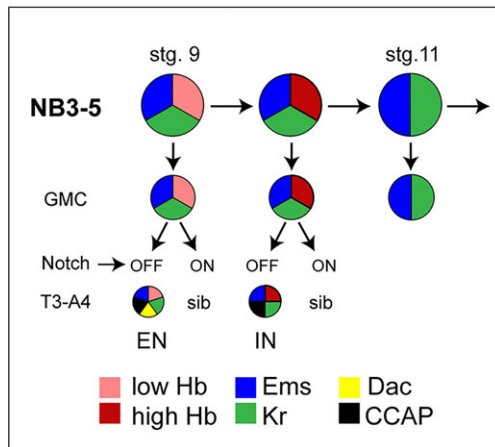


Fig. 7. Summary of the genetic network involved in CCAP neuron specification. Summary of the Hb temporal window in NB3-5. From stage 9 to stage 11, NB3-5 divides twice in the Hb/Kr temporal window; at stage 11 Hb expression is switched off. The first GMC generates the CCAP-EN, which is identified by the expression of Ems, CCAP, Burs α and Dac in T3-A4. In first instar larva this neuron expresses low levels of Hb. The second GMC generates the CCAP-IN in segments SE1-A7; in first instar larva this neuron expresses high levels of Hb and Ems, CCAP and Burs α . The third GMC expresses Ems and Kr. CCAP neurons are Notch^{OFF}; the identity of their sibling cells is unknown.

coinciding with the reported expression of Svp, which is known to close the Hb temporal window (Broadus et al., 1995; Kanai et al., 2005; Mettler et al., 2006). During this time window, NB3-5 divides twice and generates four neurons. Second, overexpression of high levels of Hb using a pan-NB driver extends the IN fate. Third, in an *hb* hypomorphic condition CCAP-INS are lost or converted into ENs, as monitored by the expression of Dac and the presence of axons that exit the ganglion.

This mechanism for generating distinct neuronal fates is different from that proposed for subdividing the Cas temporal window in NB5-6, which involves two sequential feed-forward loops and several genes to define the fates of four cells (Ap1-4) that are sequentially generated and form the Apterous (Ap) cluster of neurons. However, the mechanism that we propose is very similar to the role that the *grh* gene plays in the Ap cluster, since Grh expression increases gradually over time from Ap1 to Ap4, and overexpression of Grh converts all four Ap neurons into Ap4 (Baumgardt et al., 2009).

In addition to the different levels of Hb expression observed in NB3-5, we found that CCAP-ENS and CCAP-INS express low and high levels of Hb, respectively, and overexpression of Hb in postmitotic cells convert the ENS into INS. These observations raise the question of how a high level of Hb expression in the NB leads to a high level of expression in the neuron. A recent analysis of the *hb* regulatory region revealed a specific postmitotic enhancer (Hirono et al., 2012), so it would be tempting to propose that this enhancer is only activated in neurons that are generated by a NB expressing a high level of Hb. However, we failed to detect expression of this enhancer in any of the CCAP neurons, and overexpression of Hb in the NB did not lead to activation of the enhancer in neurons (data not shown). Therefore, further work is needed to identify the mechanism by which only a subset of the neurons generated in the Hb temporal window expresses a high level of Hb and how this is translated into different neuronal fates.

We have observed that CCAP-INS express a high level of Hb and do not express Dac, and that upon Hb overexpression the expression

of Dac is lost in many, although not all, cells. This could place *dac* as a direct target of Hb. Analysis of *dac* cis-regulatory domains indicates the presence of a 5.8 kb domain in the first intron that, when placed in a Gal4 vector, was sufficient to drive GFP expression *in vivo* in many neurons of late embryos (Pfeiffer et al., 2008). A preliminary analysis of the sequence of this domain suggests the presence of conserved regions and putative Hb binding sites (supplementary material Fig. S5A,B). Further analysis will be required to confirm the presence and elucidate the function of such sequences.

Ikaros (or *Ikzf1*), a mouse ortholog of Hb, is expressed in all early retinal progenitor cells (RPCs) of the developing retina. Its expression in RPCs is necessary and sufficient to confer the competence to generate early-born neurons (Elliott et al., 2008). These and other observations suggest that, as in the *Drosophila* CNS, cell-intrinsic mechanisms act in the RPC to control temporal competence (Cayouette et al., 2006). *Ikaros* is expressed in the early RPCs that give rise to several cell types, namely horizontal, amacrine and ganglion cells; however, it is unclear whether distinct levels of *Ikaros* expression are responsible for the production of these different cell types (Elliott et al., 2008).

In the early embryo, different concentrations of Hb seem to elicit different cellular responses. At low concentrations, Hb monomers function as activators, whereas at high concentrations they form dimers that either repress transcription or block activation (Hülkamp et al., 1990; Papatsenko and Levine, 2008; Schulz and Tautz, 1994). Analysis of the Hb protein has led to the identification of two conserved domains: a DNA-binding domain and a dimerization domain (McCarty et al., 2003). More recently, it has been shown that, in CNS development, Hb repressor function is required to maintain early NB competence and to specify early-born neuronal identity (Tran et al., 2010). These results are compatible with the evidence presented here that it is the absolute level of Hb in a NB that determines whether it is expressed in the postmitotic progeny and so specifies the different neuronal subtypes.

MATERIALS AND METHODS

Fly strains

The fly stocks used were: *hb^{FB} hb^{P1}* and *Kr¹ Kr^{CD}* (which prevent, respectively, *hb* and *Kr* CNS expression but rescue segmentation expression) (Isshiki et al., 2001), *hb⁷*, *hb¹* (hypomorphic allele), *Df(2L)ED773* (which deletes *pdm1* and *pdm2*), *cas^{Δ1}*, *cas^{Δ3}*, *grh^{IM}*, *spdo^{G104}*, *svp¹*, *dac⁴*, *ems¹*, *Df(3L)H99*, *y w UAS-flp¹²²*; *Act5C>y⁺>lacZ* and *Canton-S* as wild-type stock.

Gal4/Gal80 lines were: *elav^{C155}-Gal4*, *insc-Gal4*, *wor-Gal4*, *ems-Gal4*, *eg-Gal4*, *CCAP-Gal4*, *tub-Gal80^{FS}*.

UAS lines were: *UAS-GFP*, *UAS-lacZ*, *UAS-hb*, *UAS-Kr*, *UAS-pdm*, *UAS-cas*, *UAS-grh*.

lacZ lines were: *ems-lacZ*, *hkb-lacZ*, *mirr-lacZ*, *gsb⁰¹⁵⁵-lacZ* (FlyBase).

Immunohistochemistry and confocal imaging

Primary antibodies used were: mouse anti-GFP (1:200; Roche #11814460), rabbit anti-GFP (1:200; Invitrogen #A6455); mouse anti-BrdU (1:10; Roche #11296736001); rabbit anti-Lk (1:100; provided by D. Nässel, Stockholm University, Sweden); rat anti-CCAP (1:100; this work); rabbit anti-Burs α (1:250; provided by B. White, National Institute of Mental Health, Bethesda, USA); rabbit anti-Dpn (1:40; provided by D. Strutt, University of Sheffield, UK); guinea pig anti-Hb (1:200; provided by I. Miguel-Aliaga, Imperial College, London, UK); rabbit anti-Kr (1:500; provided by P. Carrera, Max Planck Institute, Göttingen, Germany); rabbit anti-Pdm1 (1:500; Teriente et al., 2008); guinea pig anti-Cas (1:500; provided by T. Isshiki, National Institute of Genetics, Mishima, Japan); rat anti-Ems (1:10; provided by U. Walldorf, University of Saarland, Homburg/Saar, Germany); mouse anti- β -galactosidase (1:50; DSHB #40-1a); mouse anti-En (1:50; DSHB #4D9); and mouse anti-Dac (1:50; DSHB #mAbdac2-3). Phalloidin-TRITC was from Sigma (#P1951).

The level of Hb expression in the early lineage of NB3-5 was evaluated by staining embryos of stages 8-11, first with guinea pig anti-Hb primary antibody and then with Alexa Fluor 555 goat anti-guinea pig secondary antibody (1:500; Molecular Probes #21435). The fluorescence of NB images was measured by calculating mean gray values (average gray values within selected areas) using ImageJ software (NIH). Integrated density (area \times mean gray value) was used to compare fluorescence intensities.

Immunostaining was performed according to Benito-Sipos et al. (2010) and confocal image stacks were collected using a Zeiss LSM710 or LSM510 confocal microscope.

Antibody production

To generate anti-CCAP antibody, two rats were immunized with the peptide KRPFNAFTGCGRKC, which includes the sequence of the mature peptide. The terminal Cys residue was added to couple the peptide to keyhole limpet hemocyanin carrier protein. After five immunizations, the rats were bled and the resulting sera were tested for CCAP-specific staining of the larval CNS.

BrdU labeling

Embryos at stage 9 were collected, dechorionated and injected with 10 mM 5-bromo-2'-deoxyuridine solution (BrdU detection kit; Roche #11296736001). First instar larvae were fixed by standard procedures, treated with DNase (RQ1, Promega #M199A) and stained with mouse anti-BrdU and guinea pig anti-Hb and anti-Dac.

Acknowledgements

We thank P. Carrera, C. Doe, J. Ewer, T. Isshiki, D. Nässel, I. Miguel-Aliaga, D. Strutt, S. Thor, U. Walldorf, B. White and the Bloomington Drosophila Stock Center (BDSC) for providing fly stocks and/or reagents; E. Caminero, B. Fraile, A. Montes and the confocal microscopy service of the CBM-SO for technical help. The mouse anti-Dac monoclonal antibody developed by G. Rubin was obtained from the Developmental Studies Hybridoma Bank, which was created by the NICHD of the NIH and is maintained at The University of Iowa, Department of Biology and guinea pig Iowa City, IA 52242, USA.

Competing interests

The authors declare no competing financial interests.

Author contributions

M.M.-S. and F.J.D.-B. conceived and designed the experiments and analyzed the data. M.M.-S., A.E.-G. and J.A.-R. performed the experiments. F.J.D.-B. wrote the paper.

Funding

This work was supported by a pre-doctoral fellowship from the C.S.I.C. to M.M.-S. [JAEPre-08-01279] and from the Ministerio de Educación to A.E.-G. [AP2008-00397], by grants from the Ministerio de Ciencia e Innovación [CSD2007-00008 and BFU2011-24315] to F.J.D.-B. and by an institutional grant from the Fundación Ramón Areces to the CBM-SO.

Supplementary material

Supplementary material available online at <http://dev.biologists.org/lookup/suppl/doi:10.1242/dev.113381/-/DC1>

References

- Babaoglan, A. B., O'Connor-Giles, K. M., Mistry, H., Schickedanz, A., Wilson, B. A. and Skeath, J. B. (2009). Sanpodo: a context-dependent activator and inhibitor of Notch signaling during asymmetric divisions. *Development* **136**, 4089–4098.
- Baumgardt, M., Karlsson, D., Terriente, J., Díaz-Benjumea, F. J. and Thor, S. (2009). Neuronal subtype specification within a lineage by opposing temporal feed-forward loops. *Cell* **139**, 969–982.
- Benito-Sipos, J., Estacio-Gomez, A., Moris-Sanz, M., Baumgardt, M., Thor, S. and Diaz-Benjumea, F. J. (2010). A genetic cascade involving klumpfuss, nab and castor specifies the abdominal leucokineric neurons in the Drosophila CNS. *Development* **137**, 3327–3336.
- Bier, E., Vaessin, H., Younger-Shepherd, S., Jan, L. Y. and Jan, Y. N. (1992). deadpan, an essential pan-neuronal gene in Drosophila, encodes a helix-loop-helix protein similar to the hairy gene product. *Genes Dev.* **6**, 2137–2151.
- Birkholz, O., Rickert, C., Berger, C., Urbach, R. and Technau, G. M. (2013). Neuroblast pattern and identity in the Drosophila tail region and role of doublesex in the survival of sex-specific precursors. *Development* **140**, 1830–1842.
- Broadus, J., Skeath, J. B., Spana, E. P., Bossing, T., Technau, G. and Doe, C. Q. (1995). New neuroblast markers and the origin of the aCC/pCC neurons in the Drosophila central nervous system. *Mech. Dev.* **53**, 393–402.
- Brody, T. and Odenwald, W. F. (2000). Programmed transformations in neuroblast gene expression during Drosophila CNS lineage development. *Dev. Biol.* **226**, 34–44.
- Cayouette, M., Poggi, L. and Harris, W. A. (2006). Lineage in the vertebrate retina. *Trends Neurosci.* **29**, 563–570.
- Cleary, M. D. and Doe, C. Q. (2006). Regulation of neuroblast competence: multiple temporal identity factors specify distinct neuronal fates within a single early competence window. *Genes Dev.* **20**, 429–434.
- Dewey, E. M., McNabb, S. L., Ewer, J., Kuo, G. R., Takanishi, C. L., Truman, J. W. and Honegger, H.-W. (2004). Identification of the gene encoding bursicon, an insect neuropeptide responsible for cuticle sclerotization and wing spreading. *Curr. Biol.* **14**, 1208–1213.
- Doe, C. Q. (1992). Molecular markers for identified neuroblasts and ganglion mother cells in the Drosophila central nervous system. *Development* **116**, 855–863.
- Doe, C. Q. (2008). Neural stem cells: balancing self-renewal with differentiation. *Development* **135**, 1575–1587.
- Dulcis, D., Levine, R. B. and Ewer, J. (2005). Role of the neuropeptide CCAP in Drosophila cardiac function. *J. Neurobiol.* **64**, 259–274.
- Elliott, J., Jolicoeur, C., Ramamurthy, V. and Cayouette, M. (2008). Ikaros confers early temporal competence to mouse retinal progenitor cells. *Neuron* **60**, 26–39.
- Ewer, J. (2005). Behavioral actions of neuropeptides in invertebrates: insights from Drosophila. *Horm. Behav.* **48**, 418–429.
- Gaspard, N. and Vanderhaeghen, P. (2010). Mechanisms of neural specification from embryonic stem cells. *Curr. Opin. Neurobiol.* **20**, 37–43.
- Grosskortenhaus, R., Pearson, B. J., Marusich, A. and Doe, C. Q. (2005). Regulation of temporal identity transitions in Drosophila neuroblasts. *Dev. Cell* **8**, 193–202.
- Grosskortenhaus, R., Robinson, K. J. and Doe, C. Q. (2006). Pdm and Castor specify late-born motor neuron identity in the NB7-1 lineage. *Genes Dev.* **20**, 2618–2627.
- Hirono, K., Margolis, J. S., Posakony, J. W. and Doe, C. Q. (2012). Identification of hunchback cis-regulatory DNA conferring temporal expression in neuroblasts and neurons. *Gene Expr. Patterns* **12**, 11–17.
- Hülskamp, M., Pfeifle, C. and Tautz, D. (1990). A morphogenetic gradient of hunchback protein organizes the expression of the gap genes Kruppel and knirps in the early Drosophila embryo. *Nature* **346**, 577–580.
- Isshiki, T., Pearson, B., Holbrook, S. and Doe, C. Q. (2001). Drosophila neuroblasts sequentially express transcription factors which specify the temporal identity of their neuronal progeny. *Cell* **106**, 511–521.
- Kambadur, R., Koizumi, K., Stivers, C., Nagle, J., Poole, S. J. and Odenwald, W. F. (1998). Regulation of POU genes by castor and hunchback establishes layered compartments in the Drosophila CNS. *Genes Dev.* **12**, 246–260.
- Kanai, M. I., Okabe, M. and Hiromi, Y. (2005). seven-up Controls switching of transcription factors that specify temporal identities of Drosophila neuroblasts. *Dev. Cell* **8**, 203–213.
- Kim, Y.-J., Žitňan, D., Galizia, C. G., Cho, K.-H. and Adams, M. E. (2006). A command chemical triggers an innate behavior by sequential activation of multiple peptidergic ensembles. *Curr. Biol.* **16**, 1395–1407.
- Knoblich, J. A. (2008). Mechanisms of asymmetric stem cell division. *Cell* **132**, 583–597.
- McCarty, A. S., Kleiger, G., Eisenberg, D. and Smale, S. T. (2003). Selective dimerization of a C2H2 zinc finger subfamily. *Mol. Cell* **11**, 459–470.
- Mesce, K. A. and Fahrbach, S. E. (2002). Integration of endocrine signals that regulate insect ecdysis. *Front. Neuroendocrinol.* **23**, 179–199.
- Mettler, U., Vogler, G. and Urban, J. (2006). Timing of identity: spatiotemporal regulation of hunchback in neuroblast lineages of Drosophila by Seven-up and Prospero. *Development* **133**, 429–437.
- Nässel, D. R. (2002). Neuropeptides in the nervous system of Drosophila and other insects: multiple roles as neuromodulators and neurohormones. *Prog. Neurobiol.* **68**, 1–84.
- Nässel, D. R. and Winther, A. M. (2010). Drosophila neuropeptides in regulation of physiology and behavior. *Prog. Neurobiol.* **92**, 42–104.
- Novotny, T., Eiselt, R. and Urban, J. (2002). Hunchback is required for the specification of the early sublineage of neuroblast 7-3 in the Drosophila central nervous system. *Development* **129**, 1027–1036.
- Papatsenko, D. and Levine, M. S. (2008). Dual regulation by the Hunchback gradient in the Drosophila embryo. *Proc. Natl. Acad. Sci. USA* **105**, 2901–2906.
- Park, J. H., Schroeder, A. J., Helfrich-Förster, C., Jackson, F. R. and Ewer, J. (2003). Targeted ablation of CCAP neuropeptide-containing neurons of Drosophila causes specific defects in execution and circadian timing of ecdysis behavior. *Development* **130**, 2645–2656.
- Peabody, N. C., Diao, F., Luan, H., Wang, H., Dewey, E. M., Honegger, H.-W. and White, B. H. (2008). Bursicon functions within the Drosophila CNS to modulate wing expansion behavior, hormone secretion, and cell death. *J. Neurosci.* **28**, 14379–14391.

- Pearson, B. J. and Doe, C. Q. (2003). Regulation of neuroblast competence in *Drosophila*. *Nature* **425**, 624–628.
- Pfeiffer, B. D., Jenett, A., Hammonds, A. S., Ngo, T.-T. B., Misra, S., Murphy, C., Scully, A., Carlson, J. W., Wan, K. H., Lavery, T. R. et al. (2008). Tools for neuroanatomy and neurogenetics in *Drosophila*. *Proc. Natl. Acad. Sci. USA* **105**, 9715–9720.
- Prokop, A. and Technau, G. M. (1991). The origin of postembryonic neuroblasts in the ventral nerve cord of *Drosophila melanogaster*. *Development* **111**, 79–88.
- Rogulja-Ortmann, A., Luer, K., Seibert, J., Rickert, C. and Technau, G. M. (2007). Programmed cell death in the embryonic central nervous system of *Drosophila melanogaster*. *Development* **134**, 105–116.
- Santos, J. G., Vömel, M., Struck, R., Homberg, U., Nässel, D. R. and Wegener, C. (2007). Neuroarchitecture of peptidergic systems in the larval ventral ganglion of *Drosophila melanogaster*. *PLoS ONE* **2**, e695.
- Schulz, C. and Tautz, D. (1994). Autonomous concentration-dependent activation and repression of Kruppel by hunchback in the *Drosophila* embryo. *Development* **120**, 3043–3049.
- Struhl, G., Johnston, P. and Lawrence, P. A. (1992). Control of *Drosophila* body pattern by the *hunchback* morphogen gradient. *Cell* **69**, 237–249.
- Technau, G. M., Berger, C. and Urbach, R. (2006). Generation of cell diversity and segmental pattern in the embryonic central nervous system of *Drosophila*. *Dev. Dyn.* **235**, 861–869.
- Terriente, J., Perea, D., Suzanne, M. and Diaz-Benjumea, F. J. (2008). The *Drosophila* gene *zfh2* is required to establish proximal-distal domains in the wing disc. *Dev. Biol.* **320**, 102–112.
- Tran, K. T. and Doe, C. Q. (2008). Pdm and Castor close successive temporal identity windows in the NB3-1 lineage. *Development* **135**, 3491–3499.
- Tran, K. D., Miller, M. R. and Doe, C. Q. (2010). Recombineering Hunchback identifies two conserved domains required to maintain neuroblast competence and specify early-born neuronal identity. *Development* **137**, 1421–1430.
- Tsuji, T., Hasegawa, E. and Isshiki, T. (2008). Neuroblast entry into quiescence is regulated intrinsically by the combined action of spatial Hox proteins and temporal identity factors. *Development* **135**, 3859–3869.
- Udolph, G., Rath, P., Tio, M., Toh, J., Fang, W., Pandey, R., Technau, G. M. and Chia, W. (2009). On the roles of Notch, Delta, kuzbanian, and inscuteable during the development of *Drosophila* embryonic neuroblast lineages. *Dev. Biol.* **336**, 156–168.
- Veverytsa, L. and Allan, D. W. (2011). Retrograde BMP signaling controls *Drosophila* behavior through regulation of a peptide hormone battery. *Development* **138**, 3147–3157.
- Veverytsa, L. and Allan, D. W. (2012). Temporally tuned neuronal differentiation supports the functional remodeling of a neuronal network in *Drosophila*. *Proc. Natl. Acad. Sci. USA* **109**, E748–E756.
- Vömel, M. and Wegener, C. (2007). Neurotransmitter-induced changes in the intracellular calcium concentration suggest a differential central modulation of CCAP neuron subsets in *Drosophila*. *Dev. Neurobiol.* **67**, 792–808.

Fig S1

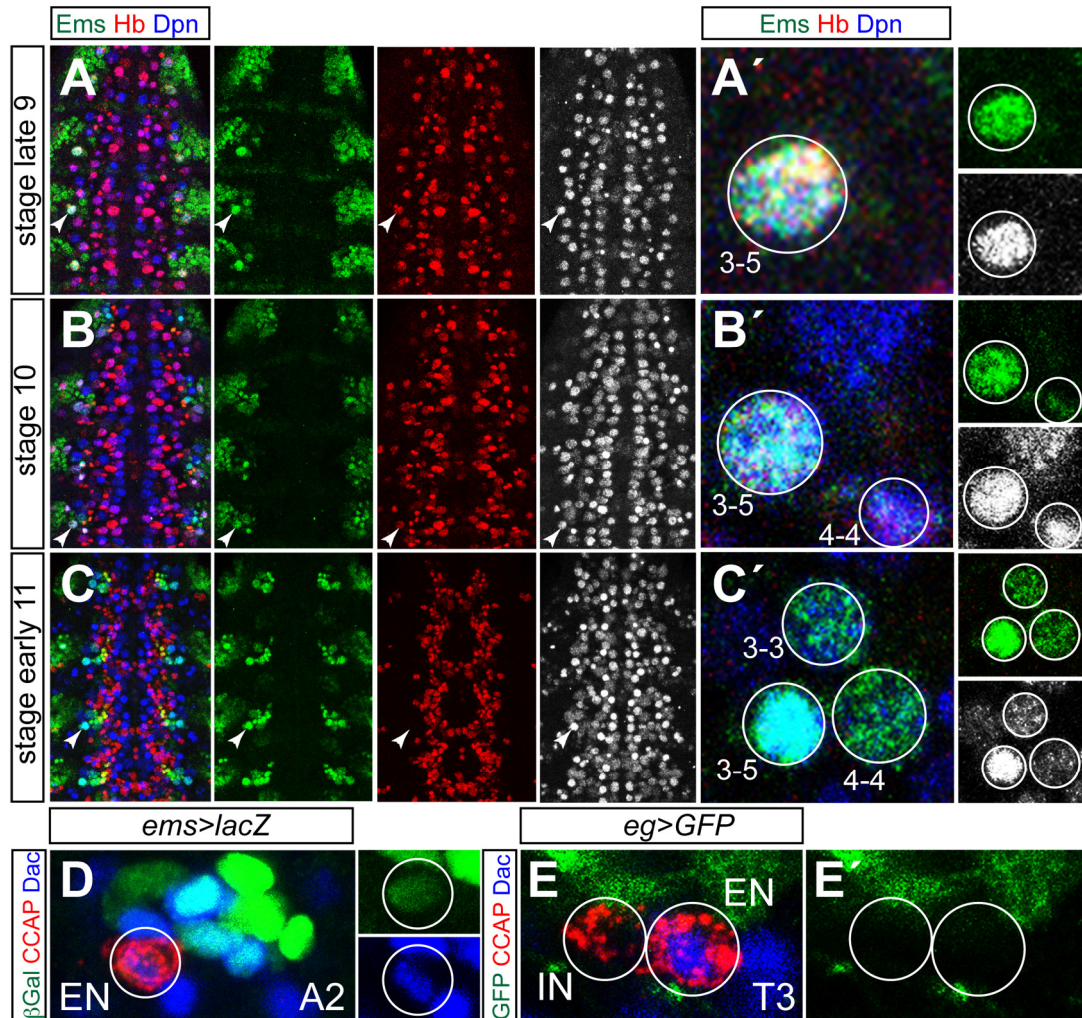


Figure S1. Ems labels the lineage of NB3-5. (A-C) Split panels of embryos at stages late 9 (A), 10 (B) and early 11 (C) showing the expression of Ems (green), Hb (red) and Dpn (blue). (A'-C') Close-up views of selected left hemisegment (arrowheads) of the different stages; NBs are indicated. At stage 9 the unique Ems-expressing NB is NB3-5. At late stage 10 NB3-3 and NB4-4 are starting to delaminate and are in a more external plane than NB3-5. Both NB3-5 and NB4-4 express Hb. At stage 11 all three NBs expressing Ems are fully delaminated and none of them express Hb. To the right the expression of Ems (green) and Dpn (white) is shown separately. (D) Labelling for CCAP (red), β -galactosidase (green) and Dac (blue) in *ems-Gal4 UAS-lacZ* larva 1. The green and blue channels are shown separately on the right. The IN is in a different focal

plane. (E-E') Labelling for CCAP (red), GFP (green) and Dac (blue) in *eg-Gal4 UAS-GFP* larva 1. The green channel is shown separately in (E'). The segment shown in each figure is indicated.

Fig S2

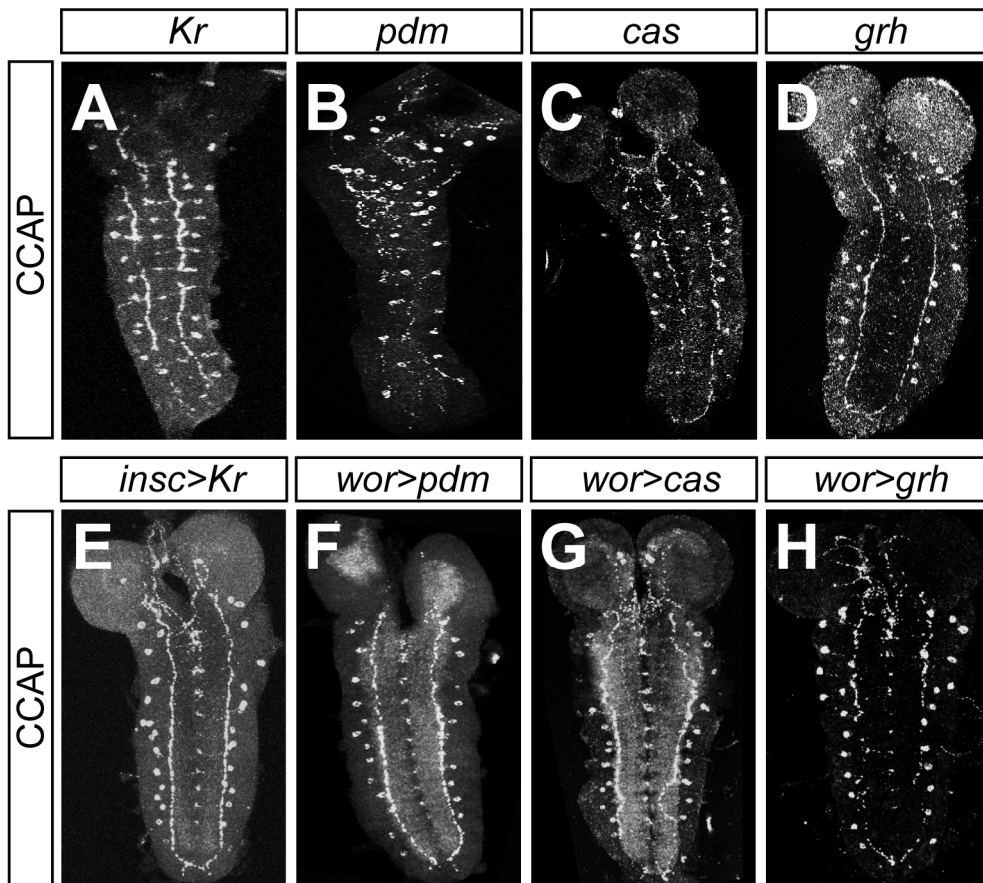


Figure S2. Kr, Pdm, Cas and Grh are not required for the expression of CCAP.

(A-D) Labelling for CCAP in first instar larvae mutant for *Kr^l Kr^{CD}* (A), *Df(2L)ED773* (*Pdm^l*) (B), *cas^{Δ1}* (C) and *grh^{IM}* (D). (E-H) Labelling for CCAP in *insc-Gal4 UAS-Kr* (E), *wor-Gal4 UAS-pdm* (F), *wor-Gal4 UAS-cas* (G) and *wor-Gal4 UAS-grh* (H).

Fig S3

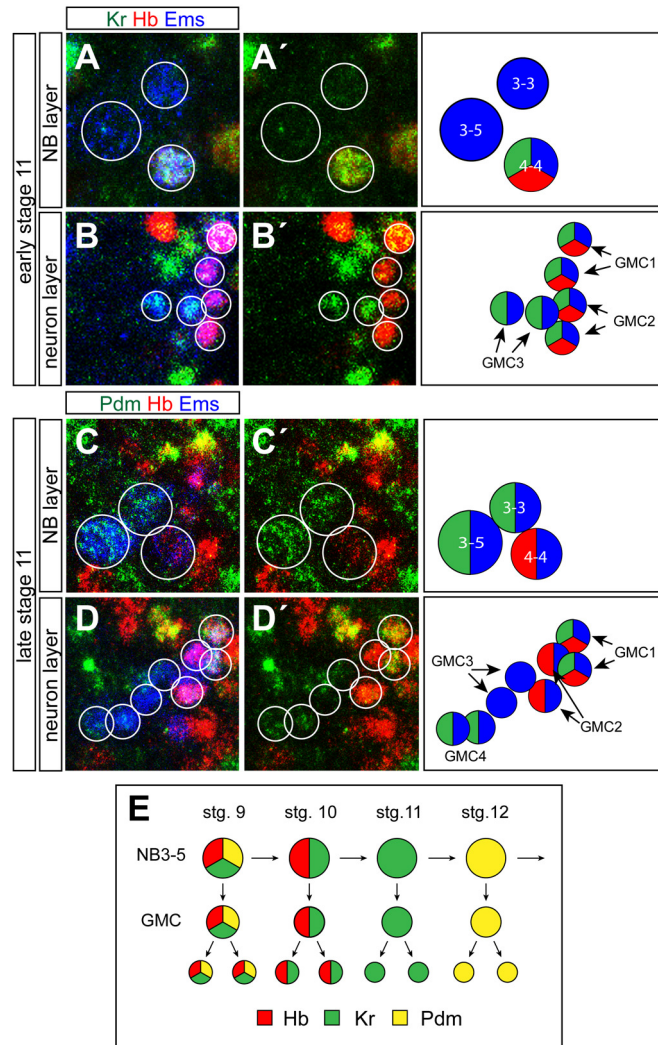


Figure S3. The early lineage of NB3-5. (A-D) Expression of Kr (green in A-B), Pdm (green in C-D), Hb (red) and Ems (blue) in the NB3-5 lineage at early (A-B) and late (C-D) stage 11. NBs expressing Ems and the progeny of the different GMCs are indicated. The green and red channels are shown in (A',B',C' and D'). NB (A and C) and neuron (B and D) layers are shown separately. To the right are graphic representations; circles represent cells expressing the indicated markers; NBs expressing Ems and the progeny of the different GMCs of NB3-5 are indicated; midline to the right, anterior up. (E) Cartoon summarizing the expression of temporal factors in the NB3-5 lineage from its delamination to the stage 12.

Fig S4

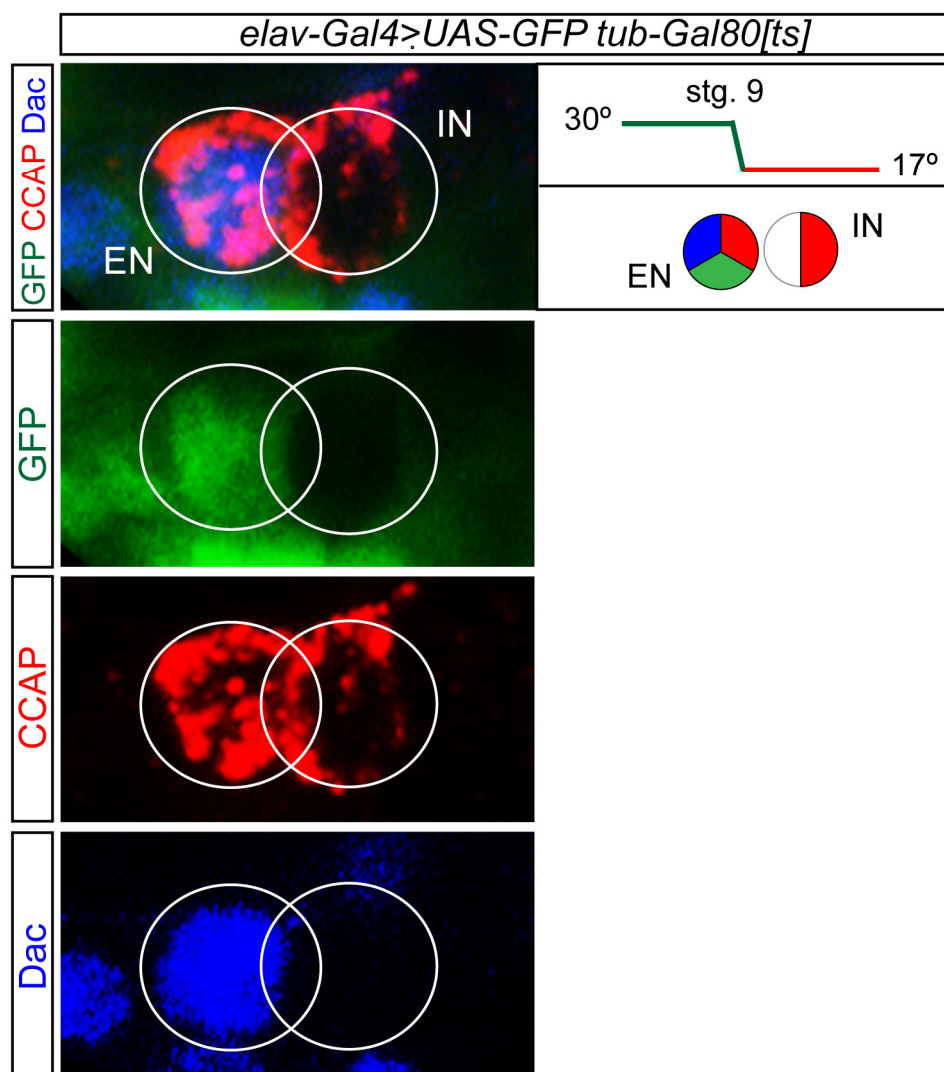
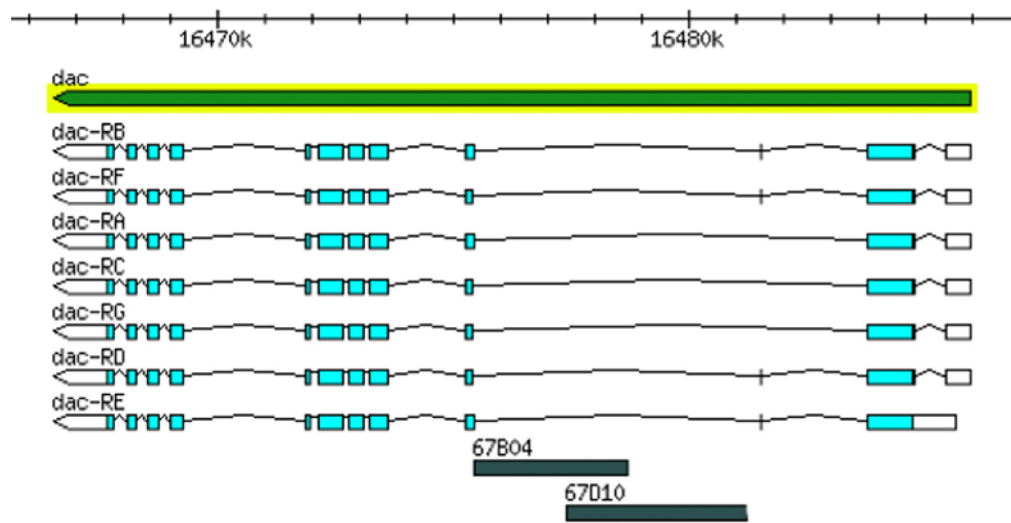


Figure S4. Split panels of Fig. 4F. Note the lack of GFP in the IN.

Fig. S5

A



B

TGGA	ACTGCGGAATTGCAGAGAGTTACTGTGGGTTGA	gAGcAATGGACaATaTcTgTGTAT	CAGTACAAAAA	75							
A	tgccA	AATGCCTcAGc	acagtgatcgcaatttcagcaaatttcaggggtgggatttagtaattagtagaaca	150							
	tattttggcattgtgctgctgcattttcacg	tttattattagatatattagataacaca	acttgagagcttaag	225							
	tggaaaaatgaacaaacttga	aattaaatgaaaatttattgtttaagca	aaagcaaaatggcttcagtagacatagag	300							
	ctcatcttaaaattgga	actctttcacacaaaac	cggtggaagcattca	aaaggttaatttatggccctcgccatg	375						
	atttatatatatgccag	accgtgctgaatatttaaaaaata	aatattgttgtaaattc	ttttgtttatttgcttct	450						
	gtaaaagccgagcag	ttccttcgccaaaaagtg	ctataattttttgatagc	ctgtctcgcgcta	aaacgcatcca	525					
	tcacgG	ctTAAC	tttCCgaggAATCTTg	ctgtttaaataattttcc	ctccgaaaaatgccATTTTTA	agccata	600				
	gtccccaccactcg	cccgcaagttggattgCCTAATTAAGCTT	CA	accaactttagtGAG	caCCCCgttgacttg	675					
	aG	ACAAATAAAAGCCAAA	aaCgAGtAga	acgaaAAACGTGCTACCATT	TTTAATTATg	GCCATAAAAAA	gtac	750			
	a	ccccgaaacagca	acaacaataaagcgagcca	acaacgagccta	aaagaaaaacgtatg	gaaaaagaaagagtt	825				
	caactatttttttaa	GtAAT	ttATGCCGCAATTGCTG	cTATTTG	TaTAaaAAATATTTAA	aaAAGT	CtTGGGCA	900			
	AA	TACTTGACGCAGGTT	aaGCTAAATAGTTAA	cCgAAaAGGCA	tAAACA	acTTGcCGCAGCGGGTGGAA	gTTATG	975			
	ACAAACA	AGAGATAA	aa	cccccaagcagcg	cggggggtcg	gattcaaaaaag	gccaaaaaataa	agaataag	1050		
	aagcaaaaactg	actaagtagcagca	aaatactacgaaggggag	ccgggtCTT	gatCAAATAGAG	cGACCC	cttcca	1125			
	T	cCAGATGG	tttctcttctctaGCAATTAA	tTATGGaATCTTCATTC	cATGTTTG	c	cgctGGTA	cACAGGTG	tC	1200	
	c	CTTAg	aAGcCaAaagacagcg	gcatgGGCAAA	TAAACAcAGGTAGCA	tGATCGT	gtgcacgata	aaattat	1275		
	g	ccatgcatactccata	cacatacatatgtacatatgtactttacatatatgtat	ctaagtatatatATGGCGAA	1350						
	ctct	TGAACa	ATTTGTAATTGTGCGT	tcttcGGATAACGA	ttctttCAAATATTTa	CAGTTACATATTg	CCA	cAg	1425		
	cc	AATATT	TGcG	ctGGATT	TTTAATTTGTGCTC	caTTAAACGTT	taa	cACAAAC	aagtcggATTGTTgCTTTgGC	1500	
	C	c	TttgGGTC	CaaaTAA	agGactc	cttagccaTGA	tTCATTCC	gagaacgaa	agaatagcagcGAAAGT	GTTTTc	1575
	T	tagttCTa	ATCggaatcgGAAGGCC	gttggttccccgc	ctgTGACGTG	CAAAA	Agaccgag	accggtgcgcct	1650		
	gtcagtcagtcag	ttgtatgaatttatgggaagtgag	ttggaggttatgcGg	GCA	cACTTT	CATTG	GAAAGTT	1725			
	TT	c	ggttctatcaggCTGACATGTTTG	tCTg	tttcagaaaatttcg	cttcacaaga	aatatgtc	ttttgcataagt	1800		
	ttcg	gaaagattggataa	ttgggtcgaggcg	tatac	gtaaatggtcacatgatgatg	caatatctacgatctgca	1875				
	aaatgag	ctttgatggaactgagctgatctg	gttaggaacatgctag	tatagacttatagaaa	caactcggtaaa	1950					
	tttagggag	tttatgcttttctgcg	accgaatgccaagta	actaatttacttggtcag	taaggttaatttcgcaa	2025					
	aatcg	aa	aagctcaaaaata	attatctctta	aatttgattccg	aaatgttcagtggtta	ataccaa	aattgcaat	2100		
	ctgtc	gaccagagaccaa	CTGCC	attttTtGCTA	ATTTATGCA	accGtTGTC	aTCGCC	gtgaATGTC	ATTTTgCAT	2175	

ttttttttttttcgcacagcggga**CAAACGTTTAGTCAGGAATAAAcAA**CAATTGTGCAAAATAGTCGCTgtgtcca 2250
 atgcctgtggcccgaaacaagtaaaacaatataatagcagcccgcgagggtggaggagaaggagagcggtagaa 2325
 ggagtgaggagg**AACCGGTTgCCAaCA**ctggccacacaattctcga**AACC**aGTTTG**CAGCTGT**ctccttgcgctctc 2400
 cacagcgatcgtacatacatatgtacatacagag**TATATTTCAATAaTCAAGGGATAGCTGAGTTGTTAATT** 2475
AttGActtggtggccgggacgc**TTGA**ga**AACAGCCGCCAAAATATGCGCCAAAgTG**cg**cTAAaTgTGC**CA**tgcca** 2550
 cttcacttgagttgcagttgcataaatcgaaatcgaaatcgatccgcatcgaaatcgatcgagttctacca 2625
 aatcgaaatagttaacatcgggctaggaaggcggttcccgccattgtgcagcgaatccaca**CTCcCT**gggctt**AACC** 2700
CACTGCCcccgcgcttttgcgatctggcgtccagaaactggggctaag**CTGCAAATGGCAAATCAATTATaTT** 2775
TATGGcCAAGTTgCCACCTTGcgaccgcatgca**GAGCGTgcTtGcCgGC**a**ACTAAATCAATGC**aatcccagtaa**A** 2850
CCGACAATTAAAgtgt**GCCtGC**aacaca**ATTTCCATATTtGCAAT**taccaatgccgagtgctcacaga**GcAGaA** 2925
TgTTAATTGAATccATAGccTcaAATTGAatc**TC**gccccctcggaaccgc**TGCCATTGTG**Cgga**AAGCC**ttaaac 3000
 ccgacaatatgcattggaaa**TTcCAGAAAGAAGCC**gagaagaataccgcttatatggttg**CGCTTGAAGT**tGg 3075
CTCGAATTTCTTTctgttg**TTAACAATAAATGTTATTGGAATTTGCATTg**Agctc**AACgAG**acaaagacagcgctg 3150
 acttcagtcg**ACTTTcGTaTTCATTGT**TAAATGACATGCAAA**TgACgAATGACATGGCA**t**TCG**ccaaagggttt 3225
 tgaaggggggccagatccaaaggcgaggtctcagggaatgtttccaggctaattgtgggttttacgcctgtta 3300
 cttctccaaatgatcaagtacgtcatttaatggaagccactgacaattggaatcgtaaattatacagcacaaact 3375
 agatttggttgagtgctctcaatgtaggctaataattagatttctgcgctgaattaaaattattgtaatacgtatt 3450
 ataatgcatttgtacccaaatttgacagacttaagcagttctctaacataattggcatcattggcaaagagaaat 3525
 aatattaaattggcagcattggcagaaaaaactcttctcctaaattttgcttgattgaatgttgtagttgagaat 3600
 gttgtaaaatagtgtagtattgttaacacacgacatttt**TCAAA**t**ATT**aatgaaaatcac**ATGgTaATT**agc**Aa** 3675
TTTTGGGTGGCCtTCTTTctctcccaagccaaagcca**TATAATTT**cagccagctacttgcgatttcccccatgac 3750
 caacaacaacagcccatatgtgagtgatg**ATTAATGCAGATTCTTGGC**aa**TTGtTTT**gcatacttgtgttttt 3825
 cc**TcaCT**act**TcAaTTTCAATTGGCGTGcTAATACTCATTTAGTTCGCAACAAAAAaCAAA**aaacgaacagc 3900
 gggcc**ACAAAAA**atg**TA**gct**ACAAACATGgCACACCAACATGG**attggatggctaaccaagatcgccccactt 3975
 cctttccatcaattgccaatatatcg**ATCTCATGATGcTGAGAGAAT**actcgtaactcaactatgccgactt**TA** 4050
TATGAAca**CTGtGTG**CAGTTT**GT**TTta**GGCTtTGTAATTA****TtTaTAA****AAATAAAT**TGA**ACTATTGTTGC**ct**CATT** 4125
TAGAtTGAACAGtgag**GCAGCcACAATGTTGCTTTTGT**Ta**TTCgGaTACACTCAATTAA**gctgaa**TTTGCAAAAT** 4200
GCAaatggcccgatg**AaACTCACACCTC**gaaaatcataga**CTCGAATTATTTTAGAAATTTAATATAATTA**tat 4275
 tttgtttctctttttttttgtttgtttttttttttttttgtttttgtttccttgcaaac**TTTT**ccgcc 4350
 tctca**TTTTGA**cag**CCcGAG**gagttcggttggttc**AGTTGATCTCTTGATTGTG**CAGTCAGTCATT**tGTGATTAGA** 4425
CATTTCGACAGTcgccgcta**TTGTTG**gatgg**CATAAATtA**g**tCtGTCTcaAcAA**caaa**GCgT**gcat**AtGAAAT** 4500
 ccac**ATAATAAA**T**CAaTGTGCTGTGTAATTTGTGTTAAGTTATT**TTGTAATCAATTT**gAA**ttctcgccgtacctc 4575
 cccacccccctcggttggtg**AGATTATGgGAA**t**ATTt**Attc**AT**ttt**G**ctattttggttaaatggctttttggg 4650
 gttttccgaaatataagtttaaaattaacgcggcaataggcttaagatcatgtaataattatattgcccgtaaa 4725
 caaatgctttctactttcattatcatgagtggttttaaaactccacgactgctctaaactttaatctttaatatt 4800
 tttgtaccctttgaagaactaaccacttagcaaatccctcctattatttccctcaaaccttgcacttatcgact 4875
 cgcttcccttccccgccatc**TtCacTCgAaCAaATTTaCAACAAATtAAAC**tg**AAaTGcAGTCAAAATCAATC**gc 4950
 tgacttttcaattcgtttttcttcttttccggccc**AaCATT**TT**cCACTTGGCCCGaG**cg**tTTtGCATAGT**ccat 5025
 ggcttcgattggatcggtcggtcggttggttaagtcttc**GgCGG**agtat**GgcTTTAGTCCAATTtAGTGGAAAG** 5100
GTGTGCCCACCAGCtCgGTCACAACACGTTGcTgTGGCTCATTGGag**TTtcgCCTT**tgccctcgctggcttttgag 5175
 ccgtttg**GTGCGtTGCC**gct**TAAACGcCGTTTTAGCCA**agttaggtgaaaaatgccaggagtgaggagtgaggaga 5250
 ccga**ACTGTCAACtGtGATCAAAATCAATTGTTTGCCATTTGCCAAACCAAAAT**t**GACtGA**gCCaagtgcagtgcga 5325
 gt**cacaCAaAAAT**GTCTGACA**aAATtAT**accataacc**CATGAAATGT**CAGTGT**CAATAATTTTTgTaAtTATG**aga 5400
 gcattgagcttgagt**acatAAAAAAA**agt**TaTATAT**tta**AAAAaTcATT**atttta**GTtGGCTGCCAT**tg**GAGA** 5475
AGCcCCCAaAaAGGCAACAAATaTAATAAAAATTATTGCAACGTAAGTTT**TGA**tttgaaacaaaggcgata**A** 5550
CaATTGgAtGagCTCAAGAGTGTTTTAGAGTG**AAAA**atgtgaggatcattgttcgcaaccaactaacagaggttcg 5625
 tctctaacatttttcaaaaaaattacataacttttaatttgatttcagtttatttgtaagtgagaagcctattt 5700
 tctaaccataaattctgcacgtaagagtatttctttcatatcgatctacaaaaatcaatccaacacacctgt 5775
 ttcattctaccgt

Figure S5. Hunchback putative binding sites in the *dachshund* gene. (A) Schematic depiction of the *dachshund* gene showing the fragments inserted in the *GMR67B04-GAL4* and the *GMR67D10-GAL4* lines (Janelia Farm GAL4 stock collection (http://flystocks.bio.indiana.edu/Browse/gal4/gal4_JaneliaD_M.php)). (B) Sequence of the fragment inserted in the *GMR67B04-GAL4* and *GMR67D10-GAL4* lines (2L:16475407,16481194). From the whole set of *dac-Gal4* fly stocks generated by Pfeiffer et al. for enhancer activity (29 lines) (Pfeiffer et al., 2008), these two lines show expression in large subsets of neurons in embryos of stage 16. Black capital letters represent bases in the *Drosophila melanogaster dachshund* reference sequence that are conserved in the *D. simulans*, *D. yakuba*, *D. erecta*, *D. ananassae* and *D. persimilis* orthologous DNAs (EvoPrinterHD). Red letters represent putative Hunchback binding sites in conserved domains (Jaspar database).

Table S1. Expression of CCAP and Bursα in different genetic combinations. Mean number of cells expressing CCAP or Bursα (#) per hemi-subesophage (SE), hemi-thorax (Th) and hemi-abdomen (Abd) in the different genotypes used in this work of first instar ventral ganglia. N: number of individual scored; SD: standard deviation; (*) significant differences from the *wild-type* (Student two-tailed t-test; P<0.01). Note that in *wild-type* abdomen the number of neurons expressing Bursα is higher than those expressing CCAP, this is because the onset of CCAP expression in the ENs happens later in larval development.

	SE			Th			Abd		
	N	Mean	SD	N	Mean	SD	N	Mean	SD
<i>wild-type</i>	70	2.8	0.5	73	3.9	0.2	74	7.7	1.64
<i>wild-type</i> (#)	20	3	0	20	4	0	20	10.4	1.9
<i>hb^{P1} hb^{FB}</i>	3	0*	0	3	0*	0	3	0*	0
<i>hb¹/hb^{P1} hb^{FB}</i> (#)	21	0*	0	21	1.6*	0.66	21	6.08*	1.08
<i>Kr¹ Kr^{CD}</i>	18	3	0.3	20	3.6	0.7	20	8.05	2.3
<i>Df(2L)ED773 (pdm⁻)</i>	37	3	0	38	4	0	38	6.75	2.3
<i>cas^{D1}</i>	13	3	0.5	13	3.6	0.5	13	6.6	1.3
<i>cas^{D3}</i>	24	2.8	0.6	24	2.7*	0.9	24	5.7*	1.8
<i>cas^{D3}</i> (#)	20	3.1	0.4	20	4	0	20	10.9	0.2
<i>grh^{IM}</i>	14	2.9	0.3	16	3.8	0.4	16	7.25	1
<i>ins-Gal4 UAS-hb</i>	20	7.2*	1.6	20	6.5*	0.8	20	14.2*	1.6
<i>ins-Gal4 UAS-hb</i> (#)	11	6.5*	0.8	12	6.5*	0.5	12	16*	3.1
<i>elav-Gal4 UAS-hb</i>	17	4.1*	0.6	17	4.75*	0.6	17	7.9	1.3
<i>elav-Gal4 UAS-hb</i> (#)	16	4.7*	0.5	16	5.4*	0.6	16	12.6*	1
<i>svp¹</i>	35	3.9*	1.1	35	5.1*	0.9	26	10.1*	2.3
<i>svp¹</i> (#)	14	5.5*	1.5	14	6.1*	0.5	13	13.8*	1.4
<i>insG4-Gal4 UAS-Kr</i>	20	2.9	0.2	20	3.7	0.6	20	9.6	2.5
<i>wor-Gal4 UAS-pdm</i>	20	2.8	0.3	20	3.9	0.4	20	7.2	0.9
<i>wor-Gal4 UAS-cas</i>	17	3.1	0.7	17	3.9	0.9	17	10	1.1
<i>wor-Gal4 UAS-grh</i>	21	2.9	0.3	21	4.2	0.6	21	8	1.1
<i>dac⁴</i>	21	3	1	21	3.7	0.7	21	7.6	1.1
<i>spdo^{G104}</i>	12	2.25	1.3	11	3	1.5	12	2.5*	2
<i>spdo^{G104}</i> (#)	9	3	1.8	9	5.2	2.5	10	9.25	2.2
<i>Df(3L)H99</i>	9	5.4*	1.8	10	4.2*	1.2	8	6.5	1.5
<i>Df(3L)H99</i> (#)	9	4.5*	0.5	11	5.8*	0.6	11	9.9	1.8
<i>ems¹</i>	16	1.2*	0.9	22	1.3*	1.3	24	2.04*	2.1

Table S2. Levels of Hb expression in the NB3-5 lineage. Levels of Hb expression in the NB3-5 at stages 8-11. MG:V: Mean Gray Values (average gray values within selected areas); IntDen: Integrated Density (area times Mean Gray Value); N = 6 in each stage; SD: standard deviation.

Stage 8	Area	MGV	IntDen
1	61.57	1355.32	83443.69
2	57.3	1414.99	81072.32
3	62.15	1178.05	73211.39
4	70.27	1062.91	74685.95
5	60.95	1481.41	90299.1
6	59.37	1215.19	72148.36
Mean	61.935	1284.645	79143.46833
SD		158.7791807	7080.269157

Stage 9	Area	MGV	IntDen
1	51.27	1304.11	66861.31
2	45.74	1733.94	79306.01
3	61.77	1665.8	102899.48
4	59.51	1856.26	110462.57
5	74.21	1182.22	87737.99
6	41.38	2536.9	104976.39
Mean	55.64666667	1713.205	92040.625
SD		479.77477	16966.42447

Stage 10	Area	MGV	IntDen
1	43.76	2141.86	93733.93
2	57.98	1999.16	115903.33
3	58.52	2293	134188.24
4	64.65	2357.71	152422.48
5	65.69	2016.36	132448.52
6	68.43	1932.09	132207.78
Mean	59.83833333	2123.363333	126817.38
SD		171.7549155	19921.5864

Stage 11	Area	MGV	IntDen
1	45.53	276.19	12575.75
2	29.29	246.97	7234.86
3	40.05	265.87	10648.53
4	33.79	236.79	8000.6
5	59.05	308.5	18216.71
6	30.79	322.54	9931.9
Mean	39.75	276.1433333	11101.39167
SD		33.77844382	3973.392959