

SHORT COMMUNICATION

Absence of atrial smooth muscle in the heart of the loggerhead sea turtle (*Caretta caretta*): a re-evaluation of its role in diving physiology

Leah M. Costello¹, Daniel García-Párraga², Jose Luis Crespo-Picazo², Jonathan R. Codd¹, Holly A. Shiels³ and William Joyce^{3,4,*}

ABSTRACT

Contraction of atrial smooth muscle in the hearts of semi-aquatic emydid turtles regulates ventricular filling, and it has been proposed that it could regulate stroke volume during characteristic rapid transitions in cardiac output associated with diving. For this hypothesis to be supported, atrial smooth muscle should be widely distributed in diving Testudines. To further understand the putative function and evolutionary significance of endocardial smooth muscle in Testudines, we studied the hearts of loggerhead sea turtles, *Caretta caretta* ($n=7$), using immunohistochemistry and histology. Surprisingly, we found no evidence of prominent atrial smooth muscle in *C. caretta*. However, smooth muscle was readily identified in the sinus venosus. Our results suggest that atrial smooth muscle does not contribute to the diving capabilities of *C. caretta*, indicating that the possible roles of smooth muscle in emydid turtle hearts require a re-evaluation. In sea turtles, the sinus venosus may instead contribute to regulate cardiac filling.

KEY WORDS: Chelonia, Testudines, Sinus venosus, Histology, Immunohistochemistry

INTRODUCTION

An extensive layer of atrial smooth muscle has been demonstrated in members of the semi-aquatic freshwater turtle family, Emydidae (pond turtles, sliders and terrapins), through histological, pharmacological and immunohistochemical investigations that span several centuries (Bottazzi, 1897; Fano, 1886; Joyce et al., 2019, 2020; Laurens, 1913; Shaner, 1923; Snyder and Andrus, 1919). Smooth muscle was first identified in *ex vivo* atrial preparations of the European pond turtle (*Emys orbicularis*), distinguishable by its production of characteristic slow tonus-wave contractions that were clearly distinct from the normal rapid contractions of cardiac muscle (Fano, 1886). These tonus

contractions were repressed by sympathetic stimulation with adrenaline, and potentiated by vagal stimulation, histamine and pituitary extract (Bottazzi and Grünbaum, 1899; Dimond, 1959; Gault, 1917; Gruber, 1920; Gruber and Markel, 1918; Sollmann and Rossides, 1927). Early histological studies described a dense layer of smooth muscle lining the luminal side of the atrial wall, originating in the sinus venosus and pulmonary veins, and continuing into the ventricle, where its distribution becomes sparse (Laurens, 1913; Shaner, 1923). A recent comparative anatomical study confirmed that atrial smooth muscle is extensive in another emydid turtle, the red-eared slider (*Trachemys scripta*), and is detectable, yet much scarcer, in most other turtles, such as snapping turtles (*Chelydra serpentina*), softshell turtles (*Cyclanorbis senegalensis* and *Pelodiscus sinensis*) and side-necked turtles (*Pelomedusa subrufa*) (Joyce et al., 2020). Atrial smooth muscle is conspicuously absent in terrestrial tortoises, and is not found in other reptiles (Joyce et al., 2020).

Despite these cross-disciplinary approaches, the functional role and evolutionary significance of atrial smooth muscle remains unresolved. In perfused hearts, contraction of the atrial smooth muscle can reduce stroke volume by impeding cardiac filling (Gesell, 1915; Joyce et al., 2019). Hence, atrial smooth muscle has the potential to provide a unique mechanism by which to regulate cardiac output. Because emydid turtles exhibit sizeable (two- to three-fold) changes in cardiac output during routine diving behaviour, associated with submergence bradycardia and ventilation tachycardia (Burggren, 1975; Wang and Hicks, 1996), it has been proposed that atrial smooth muscle may play an important role in diving physiology (Joyce et al., 2019, 2020; Joyce and Wang, 2020). During underwater apnoea, when increased vagal tone decreases heart rate (Burggren, 1975), the prolonged cardiac filling time, which would otherwise be expected to increase stroke volume (Joyce et al., 2018), may be compensated by contraction of atrial smooth muscle to reduce cardiac filling and prevent overexpansion (Joyce and Wang, 2020). The precise control of cardiac output during diving facilitates the temporal adjustment of pulmonary ventilation and perfusion matching, increasing or reducing the efficiency of gas exchange based on physiological needs (Malte et al., 2016). Although it has been speculated that smooth muscle plays a role in the diving physiology of turtles, for this hypothesis to be supported its presence would be expected to be widespread in diving Testudines, and more extensive in those with enhanced diving capabilities such as sea turtles.

Inclusion of marine turtles, therefore, is essential to examine any putative role in diving, as sea turtles (Chelonioidae) are well adapted for diving and are able to remain underwater for several hours and perform dives of greater depth and duration than seen in many other air-breathing vertebrates, including freshwater turtles

¹School of Biological Sciences, Faculty of Biology, Medicine and Health, University of Manchester, Manchester M13 9PL, UK. ²Fundación Oceanográfica de la Comunitat Valenciana, Research Department, Oceanográfico, Ciudad de las Artes y las Ciencias, C/ Eduardo Primo Yúfera 1B, 46013 Valencia, Spain. ³Division of Cardiovascular Sciences, School of Medical Sciences, Faculty of Biology, Medicine and Health, University of Manchester, Manchester M13 9NT, UK. ⁴Department of Biology – Zoophysiology, Aarhus University, C.F. Møllers Allé 3, 8000 Aarhus C, Aarhus, Denmark.

*Author for correspondence (william.joyce@bio.au.dk)

 L.M.C., 0000-0001-8142-0282; W.J., 0000-0002-3782-1641

This is an Open Access article distributed under the terms of the Creative Commons Attribution License (<https://creativecommons.org/licenses/by/4.0>), which permits unrestricted use, distribution and reproduction in any medium provided that the original work is properly attributed.

(Lutcavage and Lutz, 1997). Loggerhead sea turtles, *Caretta caretta*, have been documented on voluntary dives recorded at depths of over 340 m (Narazaki et al., 2015) and for durations of up to 10 h (Broderick et al., 2007; Hawkes et al., 2007; Hochscheid et al., 2007). Interestingly, histamine, a potent constrictor of atrial smooth muscle in emydid turtles (Joyce et al., 2019), has been shown to constrict the pulmonary arterial sphincter in loggerhead sea turtles (García-Párraga et al., 2018), which may contribute to the low pulmonary blood flow that limits pulmonary perfusion and gas exchange during diving, i.e. the ‘right-to-left shunt’ (Wang and Hicks, 1996). In a recent study, diving bradycardia was also shown to be primarily mediated by the parasympathetic nervous system in loggerhead sea turtles (Saito et al., 2022). It was also previously suggested that this protective vagal diving reflex (i.e. right-to-left cardiac shunt during breath-holding) is disrupted when entangled by-catch turtles become stressed, stimulating and inhibiting the sympathetic and parasympathetic nervous systems, respectively, leading to an increased nitrogen uptake and subsequent gas embolism after surfacing (García-Párraga et al., 2014). This protective dive response has also been shown to be interrupted in struggling green sea turtles, *Chelonia mydas*, during involuntary forced dives (Berkson, 1967). Understanding the mechanisms of cardiac regulation, including the potential role for endocardial smooth muscle in sea turtles, is particularly pertinent given that effective regulation of cardiac output during diving is likely to affect the susceptibility to gas embolism (Robinson et al., 2021). The only previous insight into the possible presence of atrial smooth muscle in sea turtles was provided by Bottazzi (1906), who briefly remarked on tonus waves produced by a right atrial *C. caretta* preparation; however, it is not possible to discern whether this represented a reproducible observation.

Together, the available literature suggests that, when present, cardiac smooth muscle under parasympathetic control could play a functional role as part of the protective vagal diving reflex in turtles (Joyce et al., 2019; Joyce and Wang, 2020). Based on these presumed roles in diving physiology, we hypothesised that atrial smooth muscle would be extensive in sea turtles, given their extraordinary dive capacity which involves vagal bradycardia (Saito et al., 2022). In order to test this hypothesis and gain insight into the functional significance of atrial smooth muscle, we determined whether smooth muscle is present in the loggerhead sea turtle using immunohistochemistry and histology.

MATERIALS AND METHODS

Sample acquisition

Seven loggerhead sea turtle, *Caretta caretta* (Linnaeus 1758) (mean±s.d. body mass: 6.3±3.5 kg, range: 1.5–12 kg), hearts were obtained from deceased individuals received through the sea turtle stranding network at the Valencian region, operated by the Fundación Oceanogràfic de la Comunitat Valenciana (Valencia, Spain) under the formal approval of the Conselleria de Agricultura, Desenvolupament Rural, Emergència Climàtica i Transició Ecològica of the Generalitat Valenciana. This included samples from six female and one male turtle; no noticeable sex differences were observed. No animals were euthanised for the purpose of this study; hearts were obtained opportunistically from animals that had recently died or been euthanised owing to severe injuries sustained from fisheries interactions along the Valencian coast. Hearts were fixed for 72–96 h in 10% neutral buffered formalin and thereafter stored in 70% ethanol. The fixed hearts were embedded in paraffin wax (Paraplast, Sigma P3558) and sectioned serially into 5 µm transverse or coronal tissue sections using the Leica X Multicut

semi-automated rotary microtome (Leica Biosystems, Wetzlar, Germany). Additional samples from juvenile *Trachemys scripta* (Thunberg and Schoepff 1792) (pond sliders, $n=5$, archived at the University of Manchester in paraffin blocks) were included as a positive control group to ensure the protocol was optimised, as a clear atrial smooth muscle signal has been previously characterised in this species (Joyce et al., 2020). These emydid turtles had been euthanised in accordance with Schedule 1 of the Animals (Scientific Procedures) Act 1986 as part of an unrelated series of experiments and the hearts had been fixed in 10% neutral buffered formalin prior to embedding in paraffin wax. The embedding orientations of the isolated atria were unknown; however, smooth muscle can be clearly identified in both transverse and coronal planes in emydid turtles (Shaner, 1923). Tissue sections were transferred and set onto standard (25×75×1 mm) or large (52×76×1 mm) microscope slides.

Immunohistochemistry

A standard immunohistochemistry protocol was carried out as described previously (Jensen et al., 2016, 2017; Joyce et al., 2020). Detection of smooth muscle was achieved using a mouse monoclonal primary antibody to smooth muscle actin (SMA, Sigma A2547, diluted to 1:600) and a donkey anti-mouse secondary antibody conjugated to the fluorophore Alexa 555 nm (Invitrogen A31570, 1:250). Cardiac muscle was detected with a rabbit recombinant polyclonal primary antibody to cardiac troponin I (cTnI, Invitrogen, 1HCLC, 1:600) and a donkey anti-rabbit antibody conjugated to the fluorophore Alexa 647 nm (Invitrogen A31573, 1:250). Fluorescent imaging was conducted on the 3D-Histech Panoramic-250 microscope slide-scanner, using the TRITC and CY5 filter sets. Images were taken using the SlideViewer Software (3D-HISTECH).

Histology

The mounted sections were de-paraffinized in xylene (Sigma Chemical Company, MO, USA), washed twice with ethanol, rehydrated through a graded series of ethanol solutions, placed into water and stained with the following stains: (1) Masson’s trichrome stain, which produces red keratin and muscle fibres, and blue collagen or connective tissue; and (2) Miller’s elastic stain with Van Geisen’s counterstain [previously employed by Shaner (1923) to detect atrial smooth muscle in emydid turtle hearts], where elastic fibres are in blue/purple, collagen and muscle in red and cytoplasm in yellow. Smooth muscle cells should be distinguishable from cardiac muscle by the endomysium, i.e. smooth muscle connective tissue. Slides were imaged with bright-field microscopy using either the Olympus BX63 Upright colour camera microscope for large slides or the 3D-HISTECH Panoramic-250 microscope slide-scanner for small slides, where snapshots of the slide-scans were taken using the CaseViewer software (3D-HISTECH).

Statistical analysis

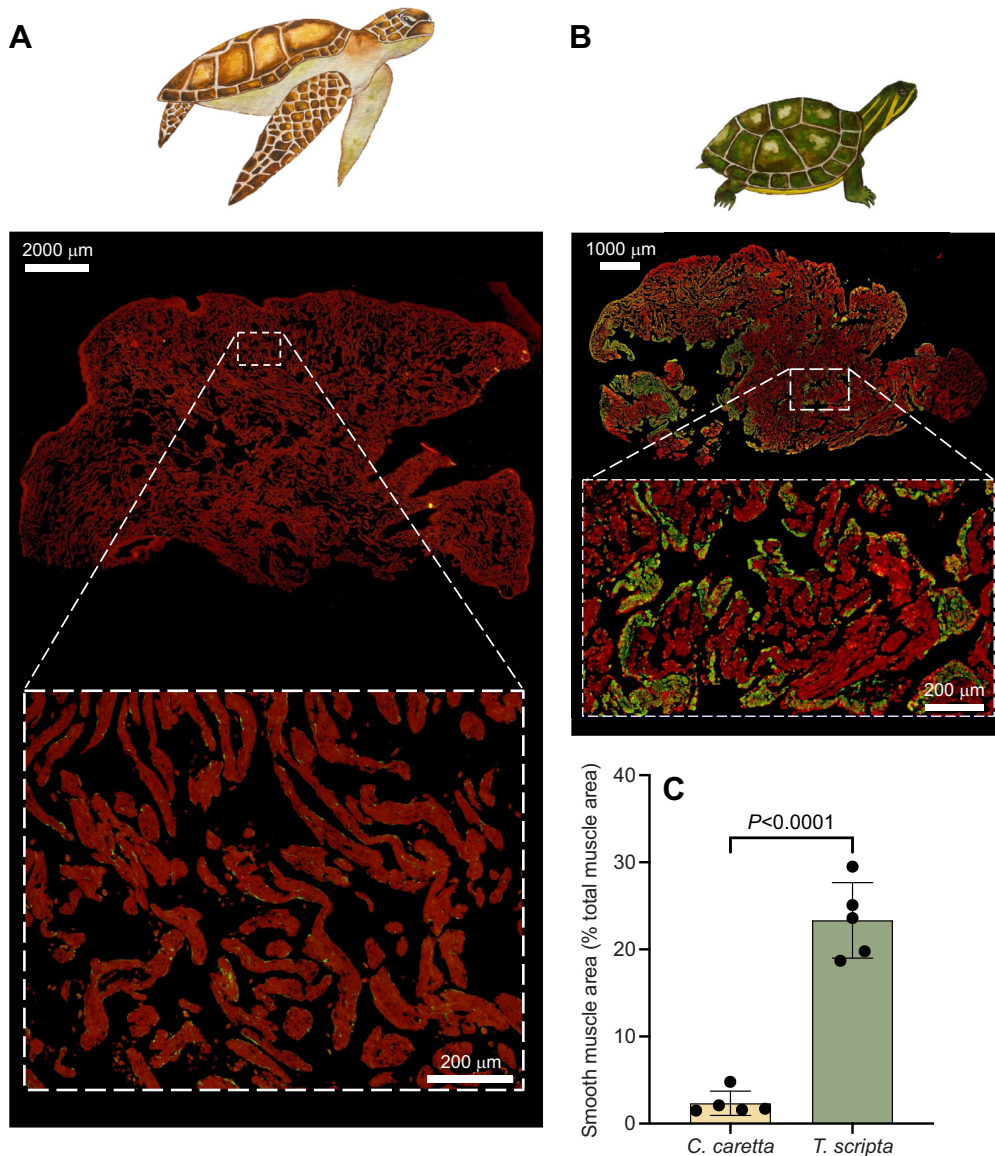
To analyse the relative proportions of cardiac muscle (red) and smooth muscle (green) in images from the immunohistochemically treated sections, we quantified the relative pixel contributions of each channel in a composite fluorescent image. The analysis was carried out in the ‘QuantCentre’ function of SlideViewer (3D-HISTECH Software). The area to be analysed, i.e. the atrium, on each image was defined by creating a closed polygon using the ‘annotation tool’ to outline the atria, and the image segmentation module ‘HistoQuant’ was used to split the red (cTnI) and green (SMA) channels (Fig. S1). The area of each colour channel was used to quantify the relative amount of smooth and cardiac muscle as a

percentage of total muscle area. Only samples in which the whole atria could be clearly viewed and defined were included in the analysis. Samples in which the tissue had folded or creased, or samples that had high levels of autofluorescence (that interferes with the detection and analysis of the specific smooth muscle signal), were excluded from the analysis. Large slides were unable to be processed for immunohistochemistry. Quantitative analysis was performed following immunohistochemistry on *C. caretta* ($n=5$) and *T. scripta* ($n=5$) (Table S1). An independent samples *t*-test was performed in RStudio software (<https://www.rstudio.com/>). Data are presented as means \pm s.d.

RESULTS AND DISCUSSION

A quantitative comparison between *C. caretta* ($2.34\pm 1.4\%$) and *T. scripta* ($23.3\pm 4.3\%$) revealed a much greater relative area of atrial smooth muscle as a percentage of total muscle area in *T. scripta* (unpaired two-tailed *t*-test, unequal variance assumed, $P<0.0001$, $t=10.3$, d.f.=8) (Fig. 1). Indeed, fluorescent immunohistochemistry and histological staining failed to identify a clear layer of smooth muscle in the atria of loggerhead turtle hearts (Fig. 1), and this was the case for all sections in all hearts ($n=7$), even those that could not

be included in the quantitative analysis. The smooth muscle signals that were detected in *C. caretta* by immunohistochemistry could be largely attributed to trace signals within trabecular bundles, vessel walls of coronary arteries (MacKinnon and Heatwole, 1981), as well as some degree of unavoidable, non-specific binding and co-localisation between muscle types (Fig. S1). Nevertheless, we were able to verify that our techniques detected clear atrial smooth muscle in the red-eared slider (Fig. 1; Fig. S2A,B), where it has previously been characterised in detail (Joyce et al., 2020). Our present quantifications of atrial smooth muscle area in *T. scripta* are similar to the equivalent measurements of an earlier study ($17.4\pm 7.9\%$) (Joyce et al., 2020). Vascular smooth muscle was also clearly detected in the coronary arteries and major arteries in the loggerhead turtle (Fig. S2C), further confirming the validity of the protocols. Whilst in our present comparison, the hearts from *C. caretta* were evidently much larger than those from *T. scripta*, it has previously been shown that the relative amounts of smooth muscle do not change with body mass in *T. scripta* (Joyce et al., 2020) and so differences in the relative amounts of smooth muscle are unlikely to be attributed to differences in body size between these species.



Although atrial smooth muscle was not detected in loggerhead turtles, smooth muscle was located in the sinus venosus (Figs 2, 3; Fig. S2D), the chamber upstream of the right atrium that connects to

the major systemic veins. Transverse sections (Fig. 3; Fig. S2D) confirm that smooth muscle is found on the luminal side of the sinus venosus. The presence of smooth muscle in the sinus venosus has

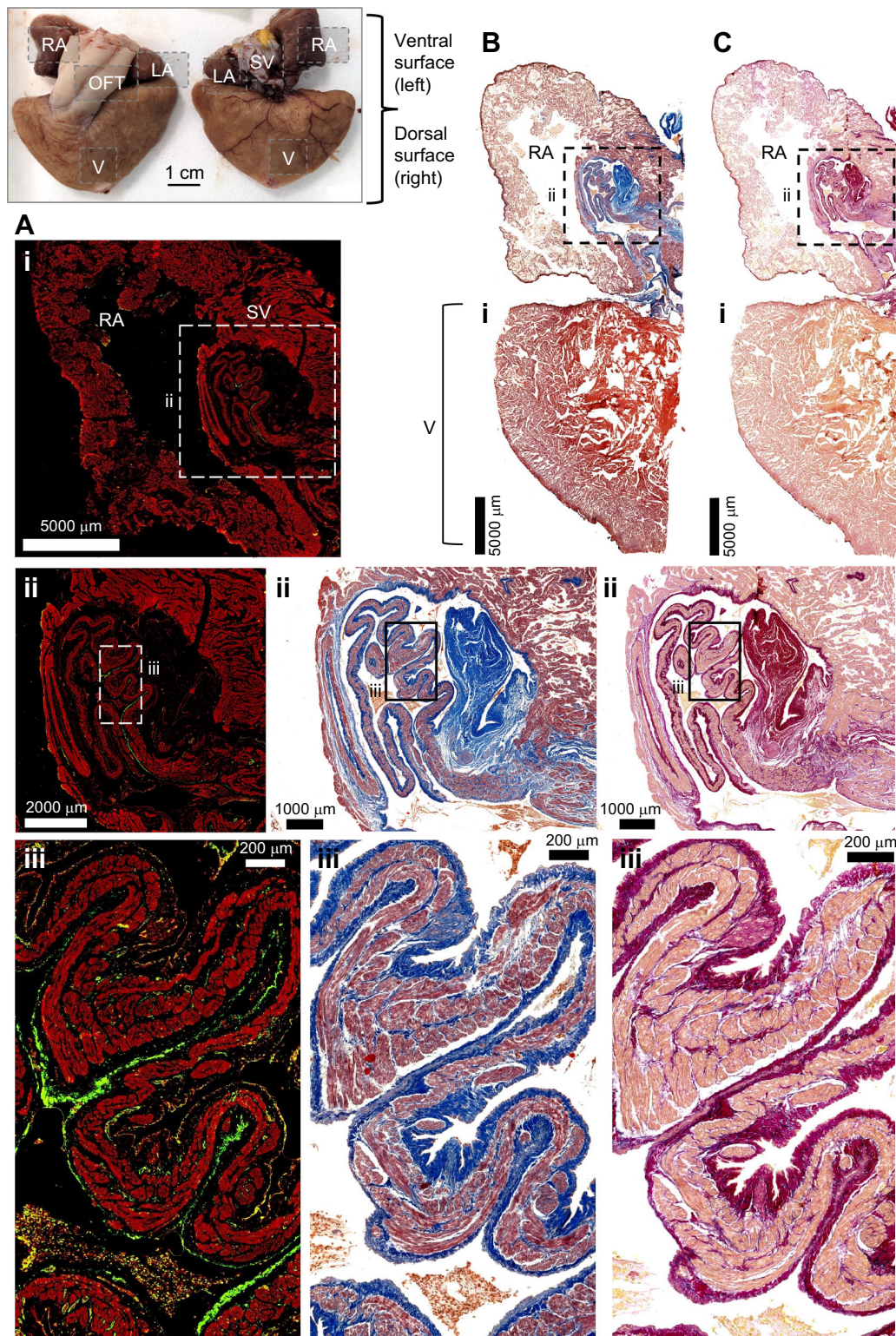


Fig. 2. Dorsal coronal cardiac sections of the loggerhead sea turtle, *Caretta caretta*. Samples were analysed with (A) immunohistochemistry and (B,C) histology, using a Masson's trichrome stain (B) and Miller's stain with Van Geison's counterstain (C). Images show whole section (i), focus on sinus venosus (ii) and detailed folds of sinus venosus (iii). Cardiac chambers are labelled in the top left photograph (for orientation), showing the right atrium (RA), left atrium (LA), sinus venosus (SV), ventricle (V) and outflow tracts (OFT). Smooth muscle and cardiac muscle can be seen respectively in green and red (A), blue and red/purple (B) and purple and pink (C). A distinct layer of smooth muscle was detected in the sinus venosus (ii).

also been shown in eight other phylogenetically diverse species of turtle including side-necked turtles, softshell turtles, snapping turtles and land tortoises, as well as in other reptiles and amphibians

(Joyce et al., 2020). Together with the present data, this indicates that smooth muscle in the sinus venosus is highly conserved across different species of turtles, whereas well-developed atrial smooth

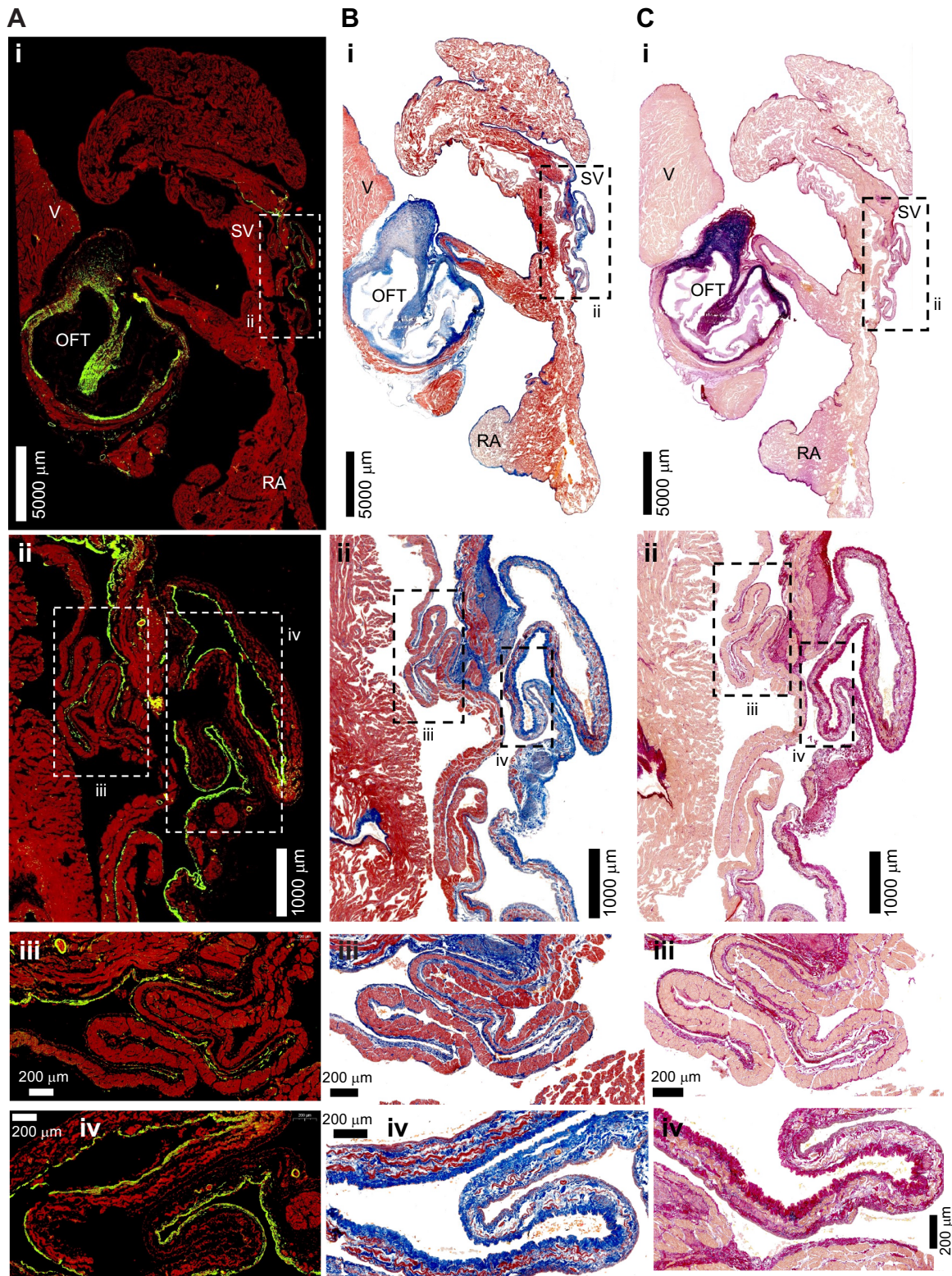


Fig. 3. Transverse cardiac sections of the loggerhead sea turtle, *Caretta caretta*. Samples were analysed with (A) immunohistochemistry and (B,C) histology, using a Masson's trichrome stain (B) and Miller's stain with Van Geison's counterstain (C). Images show whole section (i), whole sinus venosus (ii), ventral area of sinus venosus (iii) and dorsal area of sinus venosus (iv). Cardiac chambers are labelled showing the right atrium (RA), sinus venosus (SV), ventricle (V) and outflow tracts (OFT). Smooth muscle and cardiac muscle can be seen respectively in green and red (A), blue and red/purple (B) and purple/dark pink and pale pink (C). A distinct layer of smooth muscle was detected in the sinus venosus (ii), but not in the atria (i).

muscle is largely restricted to emydid turtles. Even in the emydid *T. scripta*, the proportion of smooth muscle relative to cardiac muscle was previously shown to be significantly greater in the sinus venosus than the atria (Joyce et al., 2020).

The sinus venosus has been shown to function as a contractile cardiac chamber in both *Anolis* lizards and *Python* snakes (Jensen et al., 2017), aiding atrial filling by contracting prior to the atria (Jensen et al., 2014a). We therefore suggest that, in the absence of atrial smooth muscle in *C. caretta*, the sinus venosus could play an important role in regulating atrial and hence ventricular filling, impeding venous return from the systemic circuit. Together with regulation of pulmonary resistance via muscular sphincters in the pulmonary artery (García-Párraga et al., 2018), this may restrict blood flow to the pulmonary circuit during periods of apnoea whilst diving, facilitating the right-to-left shunt and reducing nitrogen uptake at depth and subsequent risk of decompression sickness after surfacing. The widespread presence of smooth muscle in the sinus venosus of non-diving Testudines and other reptiles does not detract from a possible role in regulating cardiac output during periods of intermittent lung ventilation, as terrestrial tortoises (*Testudo graeca*) also exhibit intermittent breathing patterns and ventilation tachycardia (Burggren, 1975).

The absence of atrial smooth muscle in loggerhead turtles was still nevertheless unexpected, and leads us to reject our hypothesis that it would be extensive in sea turtles that show extraordinary diving capacity. Moreover, our current study undermines the supposition that atrial smooth muscle is an essential component of cardiovascular regulation during diving in turtles generally (Joyce et al., 2019; Joyce and Wang, 2020). This anatomical difference between freshwater emydid turtles (extensive atrial smooth muscle) and sea turtles (atrial smooth muscle absent) is interesting given that cardiovascular regulation during diving appears relatively well conserved across the two taxa. For instance, recent research showed that diving bradycardia in loggerhead turtles is mediated by the parasympathetic nervous system (Saito et al., 2022) as in emydid turtles (Burggren, 1975). In both sea turtles and emydid turtles, parasympathetic stimulation constricts the pulmonary artery (García-Párraga et al., 2018), which can result in large right-to-left shunts during diving (Sapsford, 1978). General aspects of gross cardiac morphology (e.g. architecture of cava within the ventricle) are also well conserved between sea turtles, emydid turtles and other non-archosaur reptiles (Jensen et al., 2014b, 2022). We also expected to find atrial smooth muscle in the loggerhead turtle heart because Bottazzi (1906) earlier referred to tonus waves in right-atrial preparations from the same species. However, a disconnect between anatomy and potentially infrequent tonus waves is not unprecedented; tonus waves were previously reported in the snapping turtle (*Chelydra serpentina*) (Blinks and Koch-Weser, 1963; Pereira, 1924), although these reports were likewise vague and largely anecdotal, and smooth muscle was shown to be very sparse in this species (Joyce et al., 2020). It is also possible that the tonus waves in some of these studies, including in the loggerhead turtle, were attributable to the inclusion of some sinus venosus tissue, given that it is in close anatomical association with the right atrium. That atrial smooth muscle is not found in deep diving sea turtles and most other Testudine lineages suggests its reported function in emydid turtles needs to be further examined. Emydid turtles are also renowned for their extreme capacity to tolerate anoxic conditions during overwinter hibernation (Jackson, 2002; Overgaard et al., 2007; Ultsch, 2006), and so it remains possible that atrial smooth muscle plays a functional role in cardiovascular regulation during this extreme condition, although this remains to be fully explored.

Despite their impressive dive capabilities, loggerhead sea turtles have been reported to have fewer adaptations to diving compared with other marine turtles (Williams et al., 2019). During forced submersions, systemic blood flow was found to persist in loggerhead sea turtles (Lutz and Bentley, 1985), whereas in green turtles, peripheral vasoconstriction occurred, although this did not persist for the entire submersion (Lutz and Bentley, 1985; Williams et al., 2019). Although sea turtles form a monophyletic clade (Crawford et al., 2015), it remains possible that loggerhead turtles are not representative of all sea turtles, yet it is difficult to envisage the sudden evolutionary loss of atrial smooth muscle expression in one sea turtle species that is maintained in other lineages. Nevertheless, our study unequivocally shows that atrial smooth muscle is not essential in a deep-diving sea turtle species.

In conclusion, atrial smooth muscle is absent in the hearts of *C. caretta*, suggesting that it cannot be involved in the cardiovascular response to diving in sea turtles. Nevertheless, smooth muscle and cardiac muscle were both detected in the sinus venosus, working upstream of the right atrium. In reptiles, contraction of the sinus venosus contributes to atrial filling (Jensen et al., 2017), and the presence of smooth muscle in the sinus venosus is highly conserved across Testudines. We suggest that constriction of sinus venosus smooth muscle impedes venous return and reduces filling of the right atrium, as opposed to being achieved via altering of atrial dimensions through endocardial smooth muscle contraction (Joyce et al., 2019). In the absence of atrial smooth muscle, smooth muscle in the sinus venosus may instead contribute to regulation of cardiac output and pulmonary blood flow in order to minimise nitrogen uptake during diving while still selectively exchanging oxygen and carbon dioxide (García-Párraga et al., 2018; Robinson et al., 2021).

Acknowledgements

Thanks to Grace Bako and Joel Rigg from the University of Manchester Histology Core Facility, and to Roger Meadows, Steven Marsden and Peter March in the University of Manchester Bioimaging Facility. Thanks to the Servicio Vida Silvestre of the Conselleria de Agricultura, Desarrollo Rural, Emergencia Climática y Transición Ecológica of the Generalitat Valenciana for the pertinent authorizations for sample collection and to the fishermen collective in the region for all the support bringing by-caught sea turtles to the Oceanogràfic Arca del Mar to attempt rehabilitation. We are very grateful to Laura Cádiz for providing the turtle illustrations used in Fig. 1.

Competing interests

The authors declare no competing or financial interests.

Author contributions

Conceptualization: W.J.; Methodology: L.M.C., D.G.-P., J.L.C.-P., J.R.C., H.A.S., W.J.; Formal analysis: L.M.C.; Investigation: L.M.C., W.J.; Resources: D.G.-P., J.L.C.-P., J.R.C., H.A.S.; Data curation: L.M.C.; Writing - original draft: L.M.C.; Writing - review & editing: D.G.-P., J.L.C.-P., J.R.C., H.A.S., W.J.; Visualization: L.M.C.; Supervision: J.R.C., H.A.S., W.J.; Project administration: W.J.; Funding acquisition: L.M.C., J.R.C.

Funding

L.M.C. was supported by a Biotechnology and Biological Sciences Research Council Doctoral Training Studentship. Open Access funding provided by The University of Manchester. Deposited in PMC for immediate release.

Data availability

All supporting data is available in the article and its supplementary material.

References

- Berkson, H. (1967). Physiological adjustments to deep diving in the Pacific green turtle (*Chelonia mydas agassizii*). *Comp. Biochem. Physiol.* **21**, 507-524. doi:10.1016/0010-406X(67)90448-3
- Blinks, J. R. and Koch-Weser, J. (1963). Physical factors in the analysis of the actions of drugs on myocardial contractility. *Pharmacol. Rev.* **15**, 531-599.

- Bottazzi, P.** (1897). The oscillations of the auricular tonus in the batrachian heart, with a theory on the function of sarcoplasm in muscular tissues. *J. Physiol.* **21**, 1-21. doi:10.1113/jphysiol.1897.sp000639
- Bottazzi, P.** (1906). Ricerche sulla muscolatura cardiaca dell *Emys europaea*. *Z. Allg. Physiol.* **6**, 140.
- Bottazzi, P. and Grünbaum, O.** (1899). On plain muscle. *J. Physiol.* **24**, 51-71. doi:10.1113/jphysiol.1899.sp000750
- Broderick, A. C., Coyne, M. S., Fuller, W. J., Glen, F. and Godley, B. J.** (2007). Fidelity and over-wintering of sea turtles. *Proc. R. Soc. B* **274**, 1533-1539. doi:10.1098/rspb.2007.0211
- Burggren, W. W.** (1975). A quantitative analysis of ventilation tachycardia and its control in two chelonians, *Pseudemys scripta* and *Testudo graeca*. *J. Exp. Biol.* **63**, 367-380. doi:10.1242/jeb.63.2.367
- Crawford, N. G., Parham, J. F., Sellas, A. B., Faircloth, B. C., Glenn, T. C., Papenfuss, T. J., Henderson, J. B., Hansen, M. H. and Simison, W. B.** (2015). A phylogenomic analysis of turtles. *Mol. Phylogenet. Evol.* **83**, 250-257. doi:10.1016/j.ympev.2014.10.021
- Dimond, S. M. T.** (1959). Responses to phenethylamines and nicotine and histology of turtle atria. *Am. J. Physiol.* **197**, 747-751. doi:10.1152/ajplegacy.1959.197.4.747
- Fano, G.** (1886). *Ueber die Tonusschwankungen der Atrien des Herzens von Emys europaea*. JB Hirschfeld.
- García-Párraga, D., Crespo-Picazo, J., De Quirós, Y. B., Cervera, V., Martí-Bonmati, L., Díaz-Delgado, J., Arbelo, M., Moore, M., Jepson, P. and Fernández, A.** (2014). Decompression sickness ('the bends') in sea turtles. *Dis. Aquat. Org.* **111**, 191-205. doi:10.3354/dao02790
- García-Párraga, D., Moore, M. and Fahlman, A.** (2018). Pulmonary ventilation-perfusion mismatch: a novel hypothesis for how diving vertebrates may avoid the bends. *Proc. R. Soc. B* **285**, 20180482. doi:10.1098/rspb.2018.0482
- Gault, C.** (1917). The physiology of the atrio-ventricular connection in the turtle: III. The influence of the vagi and of the sympathetic nerves on its rhythm-forming power. *Am. J. Physiol.* **43**, 22-42. doi:10.1152/ajplegacy.1917.43.1.22
- Gesell, R.** (1915). The effects of change in auricular tone and amplitude of auricular systole on ventricular output. *Am. J. Physiol.* **38**, 404-413. doi:10.1152/ajplegacy.1915.38.3.404
- Gruber, C. M.** (1920). A note on the action of pilocarpine, atropine and adrenaline upon the tonus waves in the terrapin heart. *J. Pharmacol. Exp. Ther.* **15**, 23-28.
- Gruber, C. M. and Markel, C.** (1918). Tonus waves in the terrapin auricles as affected by pilocarpine, atropine, and adrenalin. *J. Pharmacol. Exp. Ther.* **12**, 53-57.
- Hawkes, L. A., Broderick, A. C., Coyne, M. S., Godfrey, M. H. and Godley, B. J.** (2007). Only some like it hot—quantifying the environmental niche of the loggerhead sea turtle. *Divers. Distrib.* **13**, 447-457. doi:10.1111/j.1472-4642.2007.00354.x
- Hochscheid, S., Bentivegna, F., Bradai, M. N. and Hays, G. C.** (2007). Overwintering behaviour in sea turtles: dormancy is optional. *Mar. Ecol. Prog. Ser.* **340**, 287-298. doi:10.3354/meps340287
- Jackson, D. C.** (2002). Hibernating without oxygen: physiological adaptations of the painted turtle. *J. Physiol.* **543**, 731-737. doi:10.1113/jphysiol.2002.024729
- Jensen, B., Boukens, B. J. D., Wang, T., Moorman, A. F. M. and Christoffels, V. M.** (2014a). Evolution of the sinus venosus from fish to human. *J. Cardiovasc. Dev. Dis.* **1**, 14-28. doi:10.3390/jcdd1010014
- Jensen, B., Moorman, A. F. M. and Wang, T.** (2014b). Structure and function of the hearts of lizards and snakes: Squamate hearts. *Biol. Rev.* **89**, 302-336. doi:10.1111/brv.12056
- Jensen, B., Elfving, M., Elsey, R. M., Wang, T. and Crossley, D. A., II.** (2016). Coronary blood flow in the anesthetized American alligator (*Alligator mississippiensis*). *Comp. Biochem. Physiol. A Mol. Integr. Physiol.* **191**, 44-52. doi:10.1016/j.cbpa.2015.09.018
- Jensen, B., Vesterskov, S., Boukens, B. J., Nielsen, J. M., Moorman, A. F., Christoffels, V. M., Wang, T., Hashimoto, R., Otani, H. and Pazour, G. J. et al.** (2017). Morpho-functional characterization of the systemic venous pole of the reptile heart. *Sci. Rep.* **7**, 6644. doi:10.1038/s41598-016-0028-x
- Jensen, B., Lauridsen, H., Webb, G. J. W. and Wang, T.** (2022). Anatomy of the heart of the leatherback turtle. *J. Anat.* **241**, 535-544. doi:10.1111/joa.13670
- Joyce, W. and Wang, T.** (2020). What determines systemic blood flow in vertebrates? *J. Exp. Biol.* **223**, jeb215335. doi:10.1242/jeb.215335
- Joyce, W., Elsey, R. M., Wang, T. and Crossley, D. A., 2nd** (2018). Maximum heart rate does not limit cardiac output at rest or during exercise in the American alligator (*Alligator mississippiensis*). *Am. J. Physiol. Regul. Integr. Comp. Physiol.* **315**, R296-R302. doi:10.1152/ajpregu.00027.2018
- Joyce, W., Axelsson, M. and Wang, T.** (2019). Contraction of atrial smooth muscle reduces cardiac output in perfused turtle hearts. *J. Exp. Biol.* **222**, jeb199828. doi:10.1242/jeb.199828
- Joyce, W., Crossley, D. A., 2nd, Wang, T. and Jensen, B.** (2020). Smooth muscle in cardiac chambers is common in turtles and extensive in the emydid turtle, *Trachemys scripta*. *Anat. Rec.* **303**, 1327-1336. doi:10.1002/ar.24257
- Laurens, H.** (1913). The atrio-ventricular connection in the reptiles. *Anat. Rec.* **7**, 273-285. doi:10.1002/ar.1090070803
- Lutcavage, M. E. and Lutz, P. L.** (1997). Diving physiology. In *The Biology of Sea Turtles* (ed. P. L. Lutz and J. A. Musick), pp. 277-296. Boca Raton, FL: CRC Press.
- Lutz, P. L. and Bentley, T. B.** (1985). Respiratory physiology of diving in the sea turtle. *Copeia* **1985**, 671-679. doi:10.2307/1444761
- Mackinnon, M. and Heatwole, H.** (1981). Comparative cardiac anatomy of the Reptilia. IV. The coronary arterial circulation. *J. Morphol.* **170**, 1-27. doi:10.1002/jmor.1051700102
- Malte, C. L., Malte, H. and Wang, T.** (2016). Periodic ventilation: consequences for the bodily CO₂ stores and gas exchange efficiency. *Respir. Physiol. Neurobiol.* **231**, 63-74. doi:10.1016/j.resp.2016.05.011
- Narazaki, T., Sato, K. and Miyazaki, N.** (2015). Summer migration to temperate foraging habitats and active winter diving of juvenile loggerhead turtles *Caretta caretta* in the western North Pacific. *Mar. Biol.* **162**, 1251-1263. doi:10.1007/s00227-015-2666-0
- Overgaard, J., Gesser, H. and Wang, T.** (2007). Tribute to P. L. Lutz: cardiac performance and cardiovascular regulation during anoxia/hypoxia in freshwater turtles. *J. Exp. Biol.* **210**, 1687-1699. doi:10.1242/jeb.001925
- Pereira, J. R.** (1924). On the influence of temperature on the tonus waves of the turtle auricle. *Am. J. Physiol.* **70**, 68-72. doi:10.1152/ajplegacy.1924.70.1.68
- Robinson, N. J., García-Párraga, D., Stacy, B. A., Costidis, A. M., Blanco, G. S., Clyde-Brockway, C. E., Haas, H. L., Harms, C. A., Patel, S. H., Stacy, N. I. et al.** (2021). A baseline model for estimating the risk of gas embolism in sea turtles during routine dives. *Front. Physiol.* **12**, 678555. doi:10.3389/fphys.2021.678555
- Saito, A., Kinoshita, C., Kawai, M., Fukuoka, T., Sato, K. and Sakamoto, K. Q.** (2022). Effects of a parasympathetic blocker on the heart rate of loggerhead sea turtles during voluntary diving. *J. Exp. Biol.* **225**, jeb243922. doi:10.1242/jeb.243922
- Sapsford, C. W.** (1978). Anatomical evidence for intracardiac blood shunting in marine turtles. *Zool. Afr.* **13**, 57-62. doi:10.1080/00445096.1978.11447605
- Shaner, R. F.** (1923). On the smooth muscle in the turtle's heart. *Anat. Rec.* **25**, 71-75. doi:10.1002/ar.1090250203
- Snyder, C. D. and Andrus, E. C.** (1919). On the relation between tonus and smooth muscle in the terrapin heart. *J. Pharmacol. Exp. Ther.* **14**, 1-16.
- Sollmann, T. and Rossides, T.** (1927). The effects of epinephrine on the auricular tonus waves of the turtle heart. *J. Pharmacol. Exp. Ther.* **32**, 19-22.
- Ultsch, G. R.** (2006). The ecology of overwintering among turtles: where turtles overwinter and its consequences. *Biol. Rev.* **81**, 339-367. doi:10.1017/S1464793106007032
- Wang, T. and Hicks, J. W.** (1996). Cardiorespiratory synchrony in turtles. *J. Exp. Biol.* **199**, 1791-1800. doi:10.1242/jeb.199.8.1791
- Williams, C. L., Sato, K. and Ponganis, P. J.** (2019). Activity, not submergence, explains diving heart rates of captive loggerhead sea turtles. *J. Exp. Biol.* **222**, jeb200824. doi:10.1242/jeb.200824

Supplementary Figure S1.

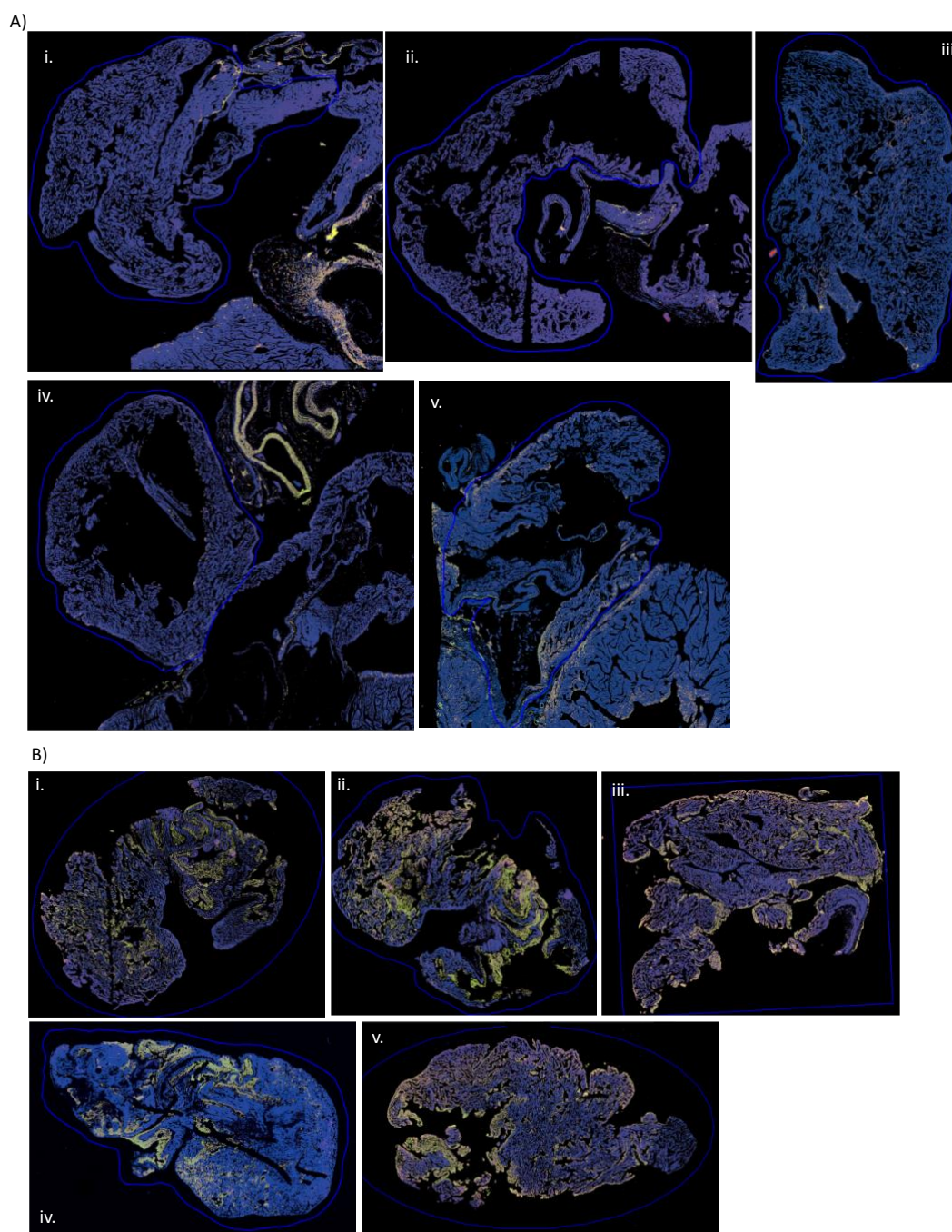


Fig. S1. Analysis of immunohistochemical atrial samples using ‘QuantCentre’ in ‘SlideViewer’ (3DHISTECH Software) to discriminate between smooth muscle (yellow) and cardiac muscle (blue). Blue outlines indicate the regions that were selected for analysis *i.e.* atria.

(A) *Caretta caretta* cardiac samples included transverse sections (i–iii) and coronal sections (iv–v).
(B) *Trachemys scripta* atrial sample sections (i–v).

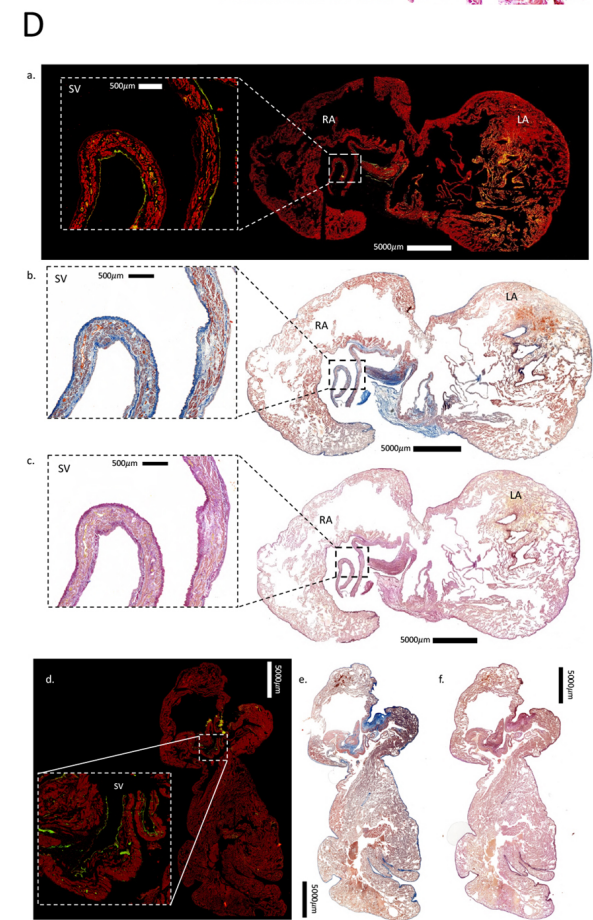
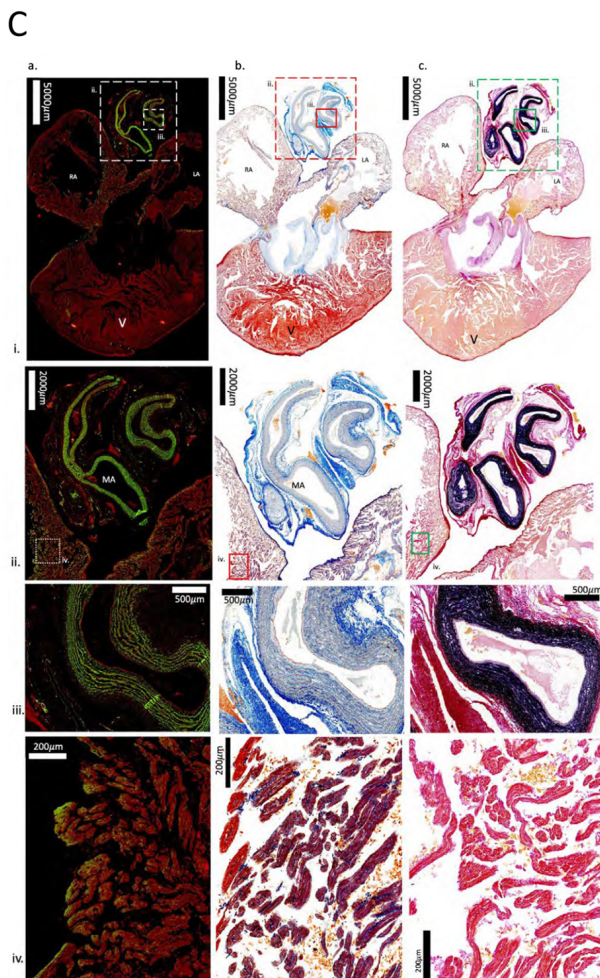
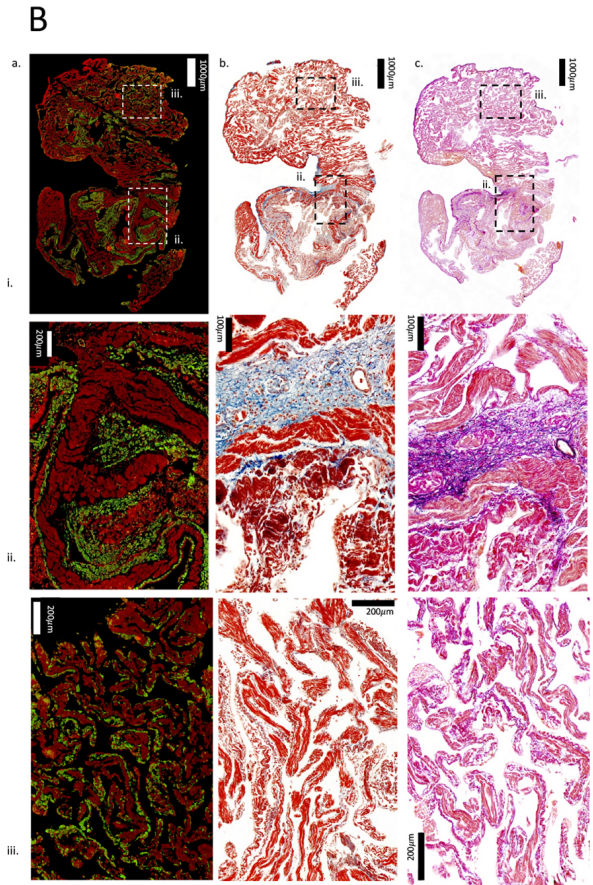
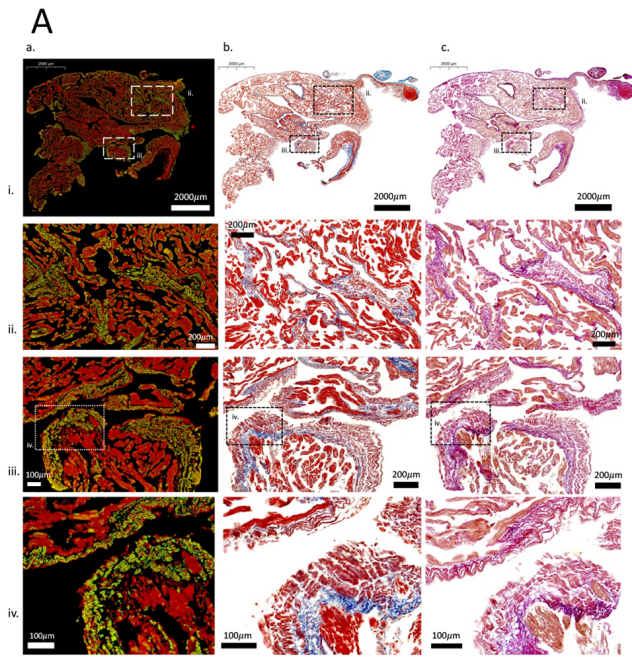


Fig. S2. Additional examples of cardiac anatomy in *Trachemys scripta* and *Caretta caretta*.

(A) Atrial sections of the emydid pond slider, *Trachemys scripta*, analysed under immunohistochemistry (column a.) and histology, using a Masson's trichrome stain (column b.) and Miller's stain with Van Geison's counterstain (column c.). Smooth muscle and cardiac muscle can be seen respectively in green and red (a.), blue/purple and red (b.) and pink/purple and red (c.). A significant amount of smooth muscle was detected in the right atrium of *T. scripta* (first representative individual).

(B) Atrial sections of the emydid pond slider, *Trachemys scripta*, analysed under immunohistochemistry (column a.) and histology, using a Masson's trichrome stain (column b.) and Miller's stain with Van Geison's counterstain (column c.). Smooth muscle and cardiac muscle can be seen respectively in green and red (a.), blue/purple and red (b.) and pink/purple and red (c.). A significant amount of smooth muscle was detected in the right atrium of *T. scripta* (second representative individual).

(C) Dorsal coronal cardiac sections of the loggerhead sea turtle, *Caretta caretta*, analysed under immunohistochemistry (column a.) and histology, using a Massons trichrome stain (column b.) and Millers stain with Van Geisons counterstain (column c.). Cardiac chambers are labelled showing the right atrium (RA), left atrium (LA), sinus venosus (SV), ventricle (V) and major arteries (MA). Smooth muscle and cardiac muscle can be seen respectively in green and red (a.), blue and red/purple (b.) and purple and pink (c.). A significant amount of smooth muscle was detected in the major arteries (row ii.), and only very small amounts of smooth muscle were detected in the atrial trabeculae within the atrial walls (seen in row iv).

(D) Transverse cardiac sections of two loggerhead sea turtle hearts, *Caretta caretta*, analysed under immunohistochemistry (row a., d.) and histology, using a Massons trichrome stain (row b., e.) and Millers stain with Van Geisons counterstain (row c, f.). Cardiac chambers are labelled showing the right atrium (RA), the left atrium (LA) and the sinus venosus (SV). Smooth muscle and cardiac muscle can be seen respectively in green and red (a., d.), blue and red/purple (b., e.) and dark pink and pale pink (c., f.). A distinct layer of smooth muscle was detected in the sinus venosus, but not in the atrial walls.

Table S1. Individual values for smooth muscle area (% total muscle area):

<i>C. caretta</i>	<i>T. scripta</i>
1.7	19.8
2.1	18.7
4.8	23.6
1.6	29.5
1.5	25.1