

Fishing for drifts: Detecting buoyancy changes of a top marine predator using a step-wise filtering method

Samantha Alex Gordine^{1,*}, Michael Fedak¹ and Lars Boehme¹

¹Sea Mammal Research Unit, Scottish Oceans Institute, University of St Andrews, St Andrews, Fife KY16 8LB, UK.

Keywords: buoyancy, marine mammal, elephant seal, body composition, drift diving, telemetry, foraging ecology, diving behaviour.

*Corresponding author:

Samantha A. Gordine
Sea Mammal Research Unit
Scottish Oceans Institute
University of St Andrews
St Andrews, Fife
KY16 8LB
UK.
Email sg494@st-andrews.ac.uk
Phone +44 1334 462663

Summary Statement

This study presents a new, independently verified method for detecting buoyancy changes of drift diving pinnipeds from abstracted dive data sent via telemetry.

Abstract

In southern elephant seals (*Mirounga leonina*), fasting and foraging related fluctuations in body composition are reflected by buoyancy changes. Such buoyancy changes can be monitored by measuring changes in the rate at which a seal drifts passively through the water column, i.e. when all active swimming motion ceases. Here, we present an improved knowledge-based method for detecting buoyancy changes from compressed and abstracted dive profiles received through telemetry. By step-wise filtering of the dive data, the developed algorithm identifies fragments of dives that correspond to times when animals drift. In the dive records of eleven southern elephant seals from South Georgia, this filtering method identified 0.8% to 2.2% of all dives as drift dives, indicating large individual variation in drift diving behaviour. The obtained drift rate time series exhibit that, at the beginning of each migration, all individuals were strongly negatively buoyant. Over the following 75 to 150 days, the buoyancy of all individuals peaked close to or at neutral buoyancy, indicative of a seal's foraging success. Independent verification with visually inspected detailed high-resolution dive data confirmed that this method is capable of reliably detecting buoyancy changes in the dive records of drift diving species using abstracted data. This also affirms that abstracted dive profiles convey the geometric shape of drift dives in sufficient detail for them to be identified. Further, it suggests that, using this step-wise filtering method, buoyancy changes could be detected even in old datasets with compressed dive information, for which conventional drift dive classification previously failed.

Introduction

For marine divers, buoyancy is incredibly important for maintaining position at depth and buoyancy changes have consequences for the energetics of swimming. Changes in an individual's buoyancy, and hence the changes in the costs of locomotion, are likely to result in behavioural adjustments that re-establish cost-efficient locomotion and effective foraging. For example, some species actively manipulate their buoyancy by changing the air volume in their lungs or pelage (Kooyman, 1973; Lovvorn and Jones, 1991; Minamikawa et al., 1997), while others adapt their diving behaviour to optimally use their own buoyancy (Beck et al., 2000; Elliott et al., 2007; Watanabe et al., 2006; Webb et al., 1998).

However, buoyancy is also determined by body composition (Beck et al., 2000; Biuw et al., 2003; Lovvorn and Jones, 1991; Webb et al., 1998), which changes markedly because fasting, growth and/or successful foraging alter the ratio of high-density lean and low-density lipid tissue (Beck et al., 2000; Biuw et al., 2003; Fedak et al., 1994; Lovvorn and Jones, 1991; Webb et al., 1998). Detecting buoyancy changes thus can provide crucial information for monitoring the well-being of far-ranging marine mammals such as southern elephant seals (*Mirounga leonina* Linnaeus 1758) and for investigating buoyancy related changes in their diving behaviour.

Elephant seals spend most of their life at sea, diving for about 90% of the time once they leave land after breeding or moulting (Biuw et al., 2003; Costa, 1993). They regularly perform dives containing inactive phases during which they are thought to rest or sleep whilst passively drifting to depths of 550 m. Such dives, during which the animal stops swimming actively and drifts passively in the water column, are known as drift dives. The rate at which an individual drifts up or down in the water column, reflects its buoyancy (Webb et al., 1998). Identifying drift dives and examining drift rate changes thus enables us to monitor buoyancy changes and to indirectly measure changes in body composition and successful resource acquisition (Biuw et al., 2003; Biuw et al., 2007; Crocker et al., 1997).

Various methodologies for drift dive identification either rely on visual dive classification (Hassrick et al., 2007; Kuhn et al., 2009; Le Boeuf et al., 1992; Page et al., 2005), the use of statistic-based identification algorithms (Miller et al., 2012; Robinson et al., 2007; Thums et al., 2008a) or the application of knowledge-based selection criteria (Biuw et al., 2003; Guinet et al., 2014; Mitani et al., 2010). All three approaches present operational difficulties. Visual dive classification is time-consuming and subjective; the implementation of automated search algorithms is to some degree subjective and requires knowledge of the underlying statistical programming; existing knowledge-based methods - all based on Biuw et al. (2003) - have not been revised or modified in light of current knowledge of drift diving behaviour or the frequent implementation of the broken-stick model for dive abstraction (Fedak et al., 2002; Photopoulou et al., 2015).

Advances in telemetry, in particular the use of accelerometers to monitor thrusting and attitude during swimming, improve drift dive identification. However, to obtain these data, either high bandwidth data transmission or recovery of instruments with large memories is required - both of which provide obstacles in studying animals that only infrequently surface or return to shore. Therefore data compression and abstraction currently remains the only viable alternative for animal-borne telemetry.

Here we present a new method based on filtering broken-stick abstracted dive data (Fedak et al., 2001) for detecting buoyancy changes. By carefully considering current knowledge of drift diving behaviour, previously published knowledge-based criteria were revised and new selection criteria

were devised to inform this filtering method. We used a combination of telemetered and recorded dive data to test and verify this step-wise filtering method. By testing the method on abstracted and compressed telemetry dive data attained via the low bandwidth Argos System (Argos, 2011), drift rate information was obtained for eleven southern elephant seals from South Georgia, South Atlantic. For five southern elephant seals from the Kerguelen Islands, the results of applying the step-wise filtering method were verified with visual inspection of additional recorded high resolution dive data.

Materials and Methods

Logger deployments

Satellite-relay data loggers (SRDLs; SMRU Instrumentation, St Andrews, UK) were deployed on southern elephant seals on the island of South Georgia, South Atlantic, in the Austral summer of 2009 as part of the SAVEX project (<http://www.st-andrews.ac.uk/~savex>). Additionally, five seals were equipped with fluorometry-conductivity-temperature-depth satellite-relay data loggers (Fluoro-CTD-SRDLs, SMRU Instrumentation, St Andrews, UK) on the Kerguelen Islands in the Austral summers of 2011 and 2012 and in the austral winter of 2012 as part of the MEMO Observatory (<http://www.insu.cnrs.fr/node/4125>).

The capture and tagging protocols of the UK deployments on South Georgia were reviewed and approved by the University Teaching and Research Ethics Committee (UTREC) and the Animal Welfare and Ethics Committee (AWEC) as part of our ethical review process and were scrutinized under the UK Animal (Scientific Procedures) Act 1986. Capture and deployment of satellite transmitters was carried out by experienced personnel with UK Animal (Scientific Procedures) Act 1986 Personal Licenses. The capture and tagging of the French deployments on the Kerguelen Islands were undertaken with approval from the IPEV (Institut polaire français Paul Emile Victor) and TAAF (Terres Australes et Antarctiques Françaises) animal ethics committee.

The SRDLs recorded high-resolution time-depth profiles at 2 sec intervals. These detailed time-depth profiles were then abstracted using a broken-stick algorithm on-board the SRDLs which reduces the data to four at-depth and two surface dive inflection points (Fedak et al., 2001; Photopolou, 2012). The abstracted data was then compressed and relayed via the Argos satellite system (Argos, 2011; Boehme et al., 2009; Fedak et al., 2002). Additionally, the detailed high-resolution data stored on-board the Fluoro-CTD-SRDLs of the five Kerguelen seals were recovered upon recapturing the animals.

Data handling

Below we present a filtering method that automatically searched through all abstracted time-depth profiles collected by eleven southern elephant seals from South Georgia and five southern elephant seals from the Kerguelen Islands to identify dive profiles that included a drift fragment. To see whether the rate at which the individual drifts changes over time, the drift rates of all identified drift fragments were extracted as a time series. For seals from South Georgia, these drift rate time series were further investigated with regard to drift dive characteristics, behavioural changes and emergent buoyancy changes. The drift rate time series of the five southern elephant seals from the Kerguelen Islands were solely used for the independent verification of the developed step-wise filtering method. The relevant data analysis was carried out using the programming software R (R-Core-Team, 2013), unless stated otherwise.

Data preparation for step-wise filtering

Dive profiles with dive duration recorded as zero were removed. Each dive profile was subdivided into five dive fragments (Fig. 1) using the six inflection points provided by the broken-stick algorithm. Dive fragments described by two consecutive inflection points of the same recorded depth were excluded to prevent flat-bottomed dives from being misidentified as drift dives. The first and last dive fragments of each profile, representing descents and ascents, were excluded.

The fragments' vertical speeds were calculated by dividing the difference in depth by the difference in time of the two inflection points describing the fragment. All speeds referred to in this study are vertical speeds, with an expected error of <5%, based on the accuracy of the SRDLs sensors. The percentage duration of each dive fragment was calculated by dividing the duration of a given fragment by the total dive duration. Tags were collecting data using GMT (Greenwich Mean Time) and local time was calculated based on the specific longitude at that time.

Step-wise filtering method using selection criteria

The automated detection of drift dives previously used criteria such as the proportional length of a drift fragment to identify drift dives (Biuw et al., 2003; Mitani et al., 2010; Onoufriou, 2012). Recent advances in drift diving analysis enabled the revision of existing selection criteria in addition to formulating new selection criteria to refine drift dive analysis. The step-wise application of the seven selection criteria outlined below discarded dive fragments that did not fulfil all the chosen selection

criteria. Dive fragments that remained after filtering were considered to be drift fragments and their vertical speeds represent drift rates.

The selection criteria used by the step-wise filtering method were:

1. Only recently weaned elephant seal pups (Biuw et al., 2003) or females during late gestation (Crocker et al., 1997) are known to become positively buoyant. *A priori*, we do not expect seals to reach positive buoyancy. Based on this and the minimum drift rates found by Bailleul et al. (2007), fragments with vertical speeds between -0.05 m sec^{-1} and -0.6 m sec^{-1} (Dragon et al., 2012; Onoufriou, 2012) were thus retained.

2. Elephant seals typically begin to drift at depths between 65 m and 117 m (Biuw et al., 2003), with 95% of all drifts occurring below 100 m (Bailleul et al., 2007). Critical evaluation of the maximum depth of drift dives (Aoki et al., 2011; Crocker et al., 1997) attests that the majority of drifts are terminated at depths shallower than 550 m.

Shallow dives, during which residual air in the lungs has a variable influence on buoyancy, were excluded (Biuw et al., 2003). The buoyant force of residual air becomes negligible below a depth of 100 m because the lungs of elephant seals are then collapsed by the surrounding pressure (Kooyman and Ponganis, 1998).

Therefore only dive fragments starting and ending in the depth range of 100 m and 550 m were retained.

3. Varying information is available on the length of a drift fragment. Crocker et al. (1997) recorded mean lengths of approximately 12 minutes for early gestation and approximately 13 minutes for late gestation female elephant seals. Aoki et al. (2011) found that, on average, drift fragments lasted for approximately 7 minutes. To determine a minimum drift length, we therefore chose a statistic-based approach explained below:

- (1) The data of each individual were divided into subsamples according to the length of dive fragments. Thus, the data in each subsample only contained dive fragments that were longer than a certain fragment length, e.g. longer than 1 minute; or 2 minutes; or 3 minutes, etc.
- (2) The vertical speeds of the dive fragments in each subsample were plotted against time (see Fig S1 in supplementary material).
- (3) The smooth.spline function (Venables and Ripley, 1994), as implemented in the R package (Ihaka and Gentleman, 1996) was fitted to these time series of vertical speeds for each subsample (see Fig. S1 in supplementary material).
- (4) For these splines, the coefficients of determination (R^2) were calculated (Fig. 2) to assess the fit of the spline to the raw data points of each subsample.

- (5) The R^2 values of all splines from all individuals were examined for the most substantial improvement of fit, i.e. the inflection point (Fig. 2).

The first inflection point was obtained for splines fitted to dive fragments longer than 8 minutes, whilst the first maximum was attained for dive fragments longer than 10 minutes (Fig. 2). Overall, the longer the dive fragments were, the better was the fit of the splines. However, there was also a trade-off between improvement of fit and the number of dive fragments that were retained. When the other six selection criteria were applied, dive fragments longer than 8 minutes were most frequent (see Fig. S2 in supplementary material). Considering this, the minimum fragment length was chosen to be greater than 8 minutes.

4. A drift dive's purpose is drifting passively for resting or processing food. Thus, the drift fragment should consume most of the dive time. Therefore all potential drift fragments shorter than 40% of the total dive duration were discarded (Andersen et al., 2014; Biuw et al., 2003; Onoufriou, 2012).

5. After passively drifting at depth for extended periods, seals must surface again to breathe. Therefore, the dive fragment after the potential drift fragment should have a vertical speed that is indicative of active, upward swimming. Thus, dive fragments with subsequent fragments below 0.2 m sec^{-1} were discarded (Richard et al., 2014).

6. Drift dives occur more often during the night (Andersen et al., 2014; Dragon et al., 2012; Le Boeuf et al., 2000). Elephant seals drift dive most frequently between 05:00-07:00 in the morning, and least often between 14:00-19:00 local time (Crocker et al., 1997). Thus, taking a conservative approach, dive fragments occurring between 13:30-19:30 local time were discarded.

7. An elephant seal swims actively upon descent before beginning its drift. The vertical speed of the dive fragment preceding the potential drift fragment should reflect this. Thus, dive fragments with preceding fragments slower than -0.6 m sec^{-1} were discarded.

Spline fitting

We recommend fitting a spline or regression line to the drift rate time series to study the trend in buoyancy change and to estimate changes in drift rate by predicting representative daily values.

A range of spline fitting algorithms and non-parametric regression methods (smooth.spline (Venables and Ripley, 1994); loess (Cleveland et al., 1992); gam (Hastie, 1991)) were tested by visually inspecting which splines fitted the trend in individual drift rate time series best and which spline generating method most frequently provided the closest fit overall without changing fitting parameters

for each time series. Subsequently, we chose constrained beta-splines (cobs) (Ng and Maechler, 2007), as these splines consistently provided the best fit.

For the cobs algorithms, the constraint 'none' was chosen, because time series of single migrations do not provide enough data to demonstrate periodicity. The maximum number of knots was set to 14 to prevent over-fitting and to permit any biologically meaningful changes in drift rate presumable over a week to be detected (Biuw et al., 2003). Knots were generated using the quantile method and the desired quantile level that provided the best results was 20%. Penalty parameters did not improve the fit. When dive records continued to be recorded after an extended haul-out period, separate splines were generated for the pre- and post-haul-out periods.

Independent verification

The step-wise filtering method was applied to the broken-stick abstracted time-depth profiles of five southern elephant seals from Kerguelen, which were received by telemetry. The detailed high-resolution time-depth profiles (sampled at 2 sec intervals) of these broken-stick abstracted dive profiles were visually inspected for drift dives, using MAMVIS (Fedak et al., 1996). Drift dives undetected by the step-wise filtering method and dives falsely identified as drift dives by the filtering method were counted. The drift rates of correctly identified drift dives were re-measured by inspecting the relevant drift phase of the detailed high-resolution dive profile in MAMVIS.

A statistical algorithm adapted from Dragon et al. (2012) was run using MATLAB (The MathWorks Inc., 2011) to create a detailed drift rate time series for each animal. For this, the detailed time-depth data recorded at 2 sec intervals were down-sampled to 40 sec interval data. The mean vertical speed and standard deviation within an 8 min sliding window was calculated for data below -50 m. Drift phases were detected as phases with a low absolute mean vertical speed ($<1 \text{ m s}^{-1}$) and a low standard deviation ($<0.05 \text{ m s}^{-1}$ for seals ft12-F1-12, ft12-F4-12 and ft07-cy28-11; $<0.075 \text{ m s}^{-1}$ for seal ft12-F2-12; $<0.1 \text{ m s}^{-1}$ for seal ft11-cy30b-12).

Time series comparison

To reduce the high daily variation in drift rate, the mean daily drift rate was computed for each time series.

The drift rate time series are non-stationary because the drift rates in each time series are strongly auto-correlated. To ensure that the correlation between the visually confirmed and the filtered time

series are not an artefact of auto-correlation, autoregressive integrated moving average (ARIMA) models were fitted to each daily mean drift rate time series using automated parameter selection (Hyndman and Khandakar, 2008). ARIMA models forecast time series which are made stationary by differencing so that the time series' autocorrelations remain constant over time (Pfaff, 2008).

The time series were differenced one lag at a time by as many differencing steps as the automatic ARIMA parameter selection suggested were necessary to make the time series stationary (Pfaff, 2008). For each individual, this rendered a set of two forecasted time series: one based on the filtered drift rate time series and a corresponding one based on the visually inspected drift rate time series. Within each set, the corresponding difference-stationary time series were statistically compared using Pearson's product moment correlation test (Table 3).

Further, a null-correlation distribution was generated by using the automatically selected ARIMA model parameters to simulate sets of time series with the same known autocorrelation structure. For each individual, this rendered a set comprising 1000 simulated time series based on the model parameters of the filtered time series and 1000 simulated time series based on model parameters of the corresponding visually confirmed time series. Again, within each set, the simulated time series were compared using Pearson's product moment correlation test, generating a null-distribution of correlation coefficients. This distribution was then used to calculate the probability of obtaining the observed correlation coefficient by chance (p-value) (Table 3).

Results

The dive records collected by the eleven seals from South Georgia covered several months so that sufficiently long drift rate time series could be obtained for all individuals. The average trip duration was 212 ± 87 days (mean \pm s.d.). A total of 59,240 complete dive profiles with five dive fragments each were considered. After filtering, 2322 dive fragments remained that met all chosen selection criteria. This corresponds to 0.8% to 2.2% of an individual's dive fragments being selected as drift fragments by the filtering method (Table 1).

Filtering the data by step-wise addition of selection criteria decreased the fraction of dive fragments that were retained (Fig. 3). The amount of dive fragments that were discarded by application of each selection criterion (Table 2) and the total number of drift fragments identified for each seal depended on their individual diving behaviour.

The frequency distribution of the filtered data was non-normal or skewed for most dive variables. Hence the median (\tilde{x}) and inter-quartile range (IQR) are reported as summary statistics.

During the 2322 drift fragments, seals descended whilst drifting with an average drift rate of -0.17 m s^{-1} (IQR: -0.26 to -0.10 m s^{-1}). Within the range of the relevant selection criterion, the selected drift

fragments, during which seals descended, were terminated at depths of 391.3 m (IQR: 441.3 to 336.3 m). Most drift fragments lasted for 811.8 seconds (IQR: 637.6 to 1037.3 sec) and drift fragments comprised 51.6% of the total dive duration (IQR: 45.2 to 58.1%). The highest occurrence of drift fragments was between 05:00 and 06:00 local time.

The time series of drift rates (Fig. 4) display strong fluctuations in buoyancy for each individual. At the beginning of the post-moult migration, the drift rate of most individuals was between -0.3 and -0.4 m sec⁻¹. Within 75 to 150 days after departure from South Georgia, all individuals reached a peak in buoyancy. Thereafter their buoyancy fluctuated around near-neutral buoyancy until hauling out. For three female individuals (ID26629, ID92575 and ID92574) the extracted drift rate time series included both the post-moult and part of the post-lactation migration. Comparing the amount of drift dives identified in the first 28 days of each respective migration revealed that seal ID26629 performed significantly more drift dives during the post-moult ($n = 56$) than during the post-lactation migration ($n = 36$) ($\chi^2 = 4.348$, $df = 1$, $p = 0.037$). Contrarily, seal ID92574 performed more drift dives during the post-lactation migration ($n = 65$) than post-moult ($n = 39$) ($\chi^2 = 6.5$, $df = 1$, $p = 0.011$). While during the post-lactation migration of seal ID92575 more drift dives were identified ($n = 52$) than during the post-moult migration ($n = 37$), the difference was not statistically significant ($\chi^2 = 2.528$, $df = 1$, $p = 0.112$).

Independent verification

For seals from the Kerguelen deployments, the filtering method selected between 2.2% to 3.9% of an individual's broken-stick abstracted dive fragments as drift fragments. Between 60% and 81% of these selected drift fragments could be visually confirmed as being true drift fragments (Table 3). The manually re-measured drift rates displayed similar daily variation as the drift rates extracted from broken-stick abstracted dive fragments (Fig. 5). The time series obtained with the statistical algorithm presented more noise than the other two methods. Yet aside from the noise, the observed temporal patterns in each individual's set of drift rate time series were overall coherent. Further, the drift rate time series obtained with the filtering method and the visually confirmed time series were all significantly positively correlated (Table 4).

Discussion

In this study, an improved knowledge-based method for detecting buoyancy changes was demonstrated by filtering abstracted dive profiles of eleven elephant seals from South Georgia for drift fragments. The step-wise filtering method was independently verified using detailed high-resolution data of five additional elephant seal from the Kerguelen Islands for which the contemporaneous abstracted data telemetered via Argos was available. The selected drift fragments

rendered time series of drift rates which displayed marked buoyancy changes during the migrations. The fitted splines further emphasise the trends in buoyancy change.

The broken-stick abstraction of detailed dive data enables persistent transmission of long time series via telemetry, which captures more variation than short high resolution time series. Whilst for the detection of other behavioural modes, such as foraging, less abstraction and more broken-stick points may be required (Heerah et al., 2014), the minimum of four inflection points sufficiently conveys the geometric shape (Fedak et al., 2001) to depict enough detail for abstracted drift dive profiles to be adequately represented and identifiable. Despite the reduced resolution of the abstracted dive data, the time series obtained with the filtering method depict the buoyancy changes almost as well as the detailed high resolution time series, indicating that the broken-stick algorithm is able to accurately abstract drift dives due to the low variability in change in depth of the bottom phase (Photopoulou et al., 2015).

Nevertheless, there was noise in the drift rate time series which possibly resulted from inexact time and depth recordings after the compression was applied which propagated through the data upon calculating the vertical speeds. Data binning and compression before satellite transmission of the data could have also caused noise. Additionally the broken-stick algorithm is unable to capture instantaneous changes in vertical speed. Therefore parts of the deceleration and acceleration phases immediately before or after the drift phase are often included in the abstracted drift fragment, leading to an over or under estimation of the true drift rate.

The detailed high-resolution times series obtained with the statistical method appeared to be noisier than the other two methods. This is likely due to the fact that the statistical method did not identify single drift fragments like the other two methods, but rather took multiple measurements of the mean drift rate in an eight minute sliding window. The time series of ft07-cy28-11 and ft11-cy30b-12 in particular were noisier because the standard deviation parameters had to be adjusted in order to obtain a complete drift rate time series (see Materials & Methods). Overall, the noise might have been reduced by applying a smoothing filter; however considering that the high-resolution time series were solely used for visual comparison, it was therefore deemed unnecessary.

The five sets of drift rate time series used for the independent verification displayed remarkable coherence in the apparent trends in buoyancy change. The detailed high resolution drift rate time series revealed how much dive information is inaccessible for satellite-received time series, due to the intermittent transmission of limited random samples. The positive correlations between the filtered and visually inspected time series manifest that - despite detection errors - the step-wise filtering method reliably detects changes in buoyancy. These positive correlations would be even stronger, if

only the beginnings of the corresponding time series, during which the buoyancy changes are most pronounced, were compared.

Visual inspection of the detailed high-resolution data with the corresponding satellite-received abstracted dive profiles revealed that the step-wise filtering method is most prone to type I errors. However, a large majority of the unidentified drift dives occurred at shallow depths, were short in duration or included multiple short drift fragments per dive which could not be adequately represented in the abstracted dive profile. Thus, the drift rates of these unidentified drift fragments would likely be inaccurate due to residual air in the lungs or false abstraction of the drift fragment and therefore would be inutile for further analysis, even if they had been correctly identified.

Failure of the abstraction algorithm to convey the geometric shape using four at-depth inflection points was the most common source of type II errors. In particular dive profiles with oscillating bottom wiggles, also termed D dives (Crocker et al., 1997; Le Boeuf et al., 1992), were often falsely represented by the abstracted dive profile. This is because the broken-stick algorithm is limited to two inflection points to describe the geometric shape of the bottom phase, which is insufficient to adequately capture the activity in the bottom phase (Photopoulou et al., 2015). The abstracted profiles of such dives are thus similar in appearance to drift dive profiles and can only be discerned in the high resolution data. Dives of type D have also been most commonly misclassified as drift dives by the random forest identification method (Thums et al., 2008a) and we confirm that seals appear to drift on parts of the depth oscillations at the bottom of these dives, which is the likely reason for misclassification also in abstracted dives.

While type II errors of the step-wise filtering method seemingly can only be reduced by visual inspection of the high resolution dive profiles, type I errors could be decreased by refining or adding selection criteria informed by future studies of drift diving behaviour. Refinements may be required because the behaviour of an individual seal influences how its body condition improves. For example, it is rare for females to reach positive buoyancy during post-lactation migrations (Thums et al., 2008a), so the step-wise filtering method excludes positive drift fragments *a priori*. However, if positive buoyancy is likely to be expected, the filtering method should be adapted to accommodate this information. The random variability caused by individual behaviour can otherwise be a potential source of error (Photopolou, 2012), because the effectiveness and relevance of each selection criterion depends on an individual's behaviour.

Variation in drift dive profiles as a result of both individual behaviour and an individual's location is well illustrated by the daily variation of drift rates, which is apparent in all drift rate time series regardless of the method used to obtain them. The proportion of drift fragments selected by the filtering method was small, which supports previous findings that drift dives only constitute small

parts of the dive records (Crocker et al., 1997; Dragon et al., 2012; Le Boeuf et al., 2000). The visual inspection of detailed high-resolution data further established that compared to other dive types the proportion of drift dives was consistently small, but the physical amount of performed drift dives varied up to three-fold among individuals. Whilst in this study, differences in the number of drift dives between the post-moult and post-lactation periods varied inconsistently depending on the individual, post-moult and post-lactation differences as Thums et al. (2008b) found seem likely. The lack of a consistent relationship in our study is probably due to the small number of individuals for which both post-moult and post-lactation periods could be recorded. Overall, the variations in the amount of drift dives among and within individuals pose interesting questions regarding the purpose of drift diving. For example, if drift dives serve as resting and food processing dives, as has been suggested (Crocker et al., 1997; Mitani et al., 2010), do the variations in the amount of drift dives indicate varying needs for resting or food processing? Or are there other ways for resting, e.g. by extending surface intervals? Further, are gaps in the drift rate time series a result of reduced need for drifting or due to failure of the methods to detect drift dives?

The latter is particularly important because the quadratic relationship between drag and velocity can lead to discontinuities in the drift dive record around neutral buoyancy (Biuw et al., 2003). To overcome such discontinuities the data are extrapolated for example by fitting splines. Thus, the reason for such discontinuities has implications for the interpretation of the resulting fluctuations in drift rate around neutral buoyancy. Generally, any such fluctuations should be interpreted cautiously with respect to body condition or dive behaviour. This is particularly important in phases of seemingly constant buoyancy, during which fluctuations could also result from slight changes in the ratio of lean to lipid tissue together with a change in total body mass.

Individual dive behaviour can affect the detectability of buoyancy changes. This is also especially apparent for the two individuals ID26629 and ID92574. The drift rate time series of these individuals display a cluster of very slow or even positive vertical speeds during early parts of the migration when such vertical speeds are highly unlikely. Such a cluster of slow vertical speeds was also detected in the time series of ft11-Cy30b-12 from the Kerguelen deployment. The dive fragments from which these vertical speeds stem from have similar characteristics to drift fragments and therefore could not be filtered out by any of the stated selection criteria. This provides evidence for the presence of a second behaviour other than drift diving which is depicted similarly by the two-dimensional dive profiles in that the dive fragments have low variability in depth change over extended periods of time. The two-dimensional representation of the dive data may mask a behavioural movement in the third dimension which e.g. could be associated with more complex dive patterns. Taking regard of the fact that such clusters appear whilst these seals forage in the area of the Bullard Fracture Zone and Bruce Ridge, South Atlantic, and the Kerguelen Plateau, southern Indian Ocean, such complex dive patterns

could likely arise in response to the complex topography which e.g. can induce changes in the water column by upwelling.

In the Kerguelen deployment, such clusters were only visible in the time series obtained with the step-wise filtering method and the statistical method, but not in the visually confirmed time series. This illustrates that both automated drift dive identification methods were unable to distinguish between such dive fragments and true drift fragments, whilst subjective visual inspection of detailed high-resolution data enabled to discern between the two. However, the broken-stick abstracted dive profiles of these other dive fragments are indiscernible from true drift dive fragments. Thus, with broken-stick data alone, these clusters currently can only be eliminated by manually removing vertical speeds which are inconsistent with the apparent temporal patterns in the drift rate time series. Presently, a reliable distinction between these dive fragments and true drift fragments only seems possible with acceleration data and further investigations will be needed to ascertain the form and function of the aforementioned second behaviour.

Generally speaking, if any additional or alternative information on an individual's or another species' diving behaviour is available, this information can be accommodated by simply adjusting the selection criteria. For example, Andersen et al. (2014) used a preliminary version of our method (Gordine, 2013) and successfully identified drift dives in the dive records of Hooded seals (*Cystophora cristata* Erxleben 1777). The selection criteria and the spline fitting algorithm presented here are by no means unchangeable or finite and need to be fine-tuned to a species or an individual. Other statistical methods such as the random forest algorithms require additional datasets for training the algorithm, which can be problematic for small datasets and which also requires time-consuming visual classification. The advantages of our method are that it is fast, automated and standardised. Its implementation is easy for small and large datasets and the results are reproducible. This enables utilisation of our step-wise filtering method as a first step of drift dive analysis, after which further individual refinements can be made.

Given the abstracted nature of any time-depth record, any drift dive identification method is prone to error, be they visual dive classification or random forest algorithms trained by visually classified datasets (Thums et al., 2008a). The important question is whether a given method is able to convey the relevant information despite its inherent noise or error. Our method provides long drift rate time series from abstracted dive profiles that, despite its error rate, capture the relevant variations in buoyancy change over a migration. While new methodologies based on on-board processing are increasingly developed and used, this approach could substantially increase the amount of information about the well-being of marine top predators by accessing older, archived data of abstracted nature.

Together with newly collected high resolution data, valuable long time series are made available to address and monitor changes in the physical environment and body condition.

List of Abbreviations

ARIMA – autoregressive integrated moving average

cobs – constrained beta splines

gam – generalised additive model

GMT – Greenwich Mean Time

IQR – inter-quartile range

loess – local polynomial regression fitting

MEMO - Mammifères Echantillonneurs du Milieu Océanique

SAVEX – South Atlantic Variability Experiment

SMRU - Sea Mammal Research Unit

SRDLs – Satellite relay data loggers

UK – United Kingdom

Acknowledgements

The data used to demonstrate and develop this method were collected as part of the South Atlantic Variability Experiment (SAVEX) project, which was funded by the Natural Environment Research Council (NERC) grant [NE/E018289/1]. The data used for the independent verification of the developed method were provided as part of the MEMO Observatory, PI C. Guinet, who we thank for allowing use of the data and also for discussing and providing useful comments on the results. Special thanks also to Martin Biuw for his very useful feedback during the development of the method.

The authors acknowledge the support of the MASTS pooling initiative (The Marine Alliance for Science and Technology for Scotland) in the completion of this study. MASTS is funded by the Scottish Funding Council (grant reference HR09011) and contributing institutions. Additionally, we greatly appreciate that the Natural Environment Research Council and the University of St Andrews 600th Scholarship funded a PhD studentship in Marine Biology for Samantha A. Gordine to conduct the relevant research.

We thank Mick Wu for his feedback and opinions throughout the development of this method. Additionally, we would like to acknowledge Katarina Birkedal and especially Alan Gordine for their time and effort spent proof-reading this manuscript. We are grateful for many useful comments and suggestions by two anonymous reviewers which helped to improve this manuscript.

Competing interests

There are no competing interests related to this work.

Author contribution

Conceived and designed this method: SAG, MF and LB.

Conducting the analysis: SAG.

Contributed materials/analysis tools: SAG, MF and LB.

Wrote the paper: SAG, MF and LB.

Funding

This research was partly funded by a Natural Environment Research Council grant [NE/E018289/1]. Further, a PhD studentship in Marine Biology partially funded by the Natural Environment Research Council [NE/L501852/1] and the University of St Andrews 600th Scholarship supported this work.

References

- Andersen, J. M., Stenson, G. B., Skern-Maurizen, M., Wiersma, Y. F., Rosing-Asvid, A., Hammill, M. O. and Boehme, L. (2014). Drift Diving by Hooded Seals (*Cystophora cristata*) in the Northwest Atlantic Ocean. *PLoS One* **9**, e103072.
- Aoki, K., Watanabe, Y. Y., Crocker, D. E., Robinson, P. W., Biuw, M., Costa, D. P., Miyazaki, N., Fedak, M. A. and Miller, P. J. O. (2011). Northern elephant seals adjust gliding and stroking patterns with changes in buoyancy: validation of at-sea metrics of body density. *J. Exp. Biol.* **214**, 2973–2987.
- Argos (2011). *Argos User's Manual. Worldwide tracking and environmental monitoring by satellite*. Toulouse, France: Collecte Localisation Satellites.
- Bailleul, F., Charrassin, J.-B., Monestiez, P., Roquet, F., Biuw, M. and Guinet, C. (2007). Successful foraging zones of southern elephant seals from the Kerguelen Islands in relation to oceanographic conditions. *Philos. Trans. R. Soc. B Biol. Sci.* **362**, 2169–2181.
- Beck, C. A., Bowen, W. D. and Iverson, S. J. (2000). Seasonal changes in buoyancy and diving behaviour of adult grey seals. *J. Exp. Biol.* **203**, 2323–2330.
- Biuw, M., McConnell, B., Bradshaw, C. J., Burton, H. and Fedak, M. (2003). Blubber and buoyancy: monitoring the body condition of free-ranging seals using simple dive characteristics. *J. Exp. Biol.* **206**, 3405–3423.
- Biuw, M., Boehme, L., Guinet, C., Hindell, M., Costa, D., Charrassin, J. B., Roquet, F., Bailleul, F., Meredith, M., Thorpe, S., et al. (2007). Variations in behavior and condition of a Southern Ocean top predator in relation to in situ oceanographic conditions. *Proc. Natl. Acad. Sci. U. S. A.* **104**, 13705–13710.
- Boehme, L., Kovacs, K., Lydersen, C., Nøst, O. A., Biuw, M., Charrassin, J.-B., Roquet, F., Guinet, C., Meredith, M. and Nicholls, K. (2009). Biologging in the Global Ocean Observing System. In *Proceedings of OceanObs'09: Sustained Ocean Observations and Information for Society* (ed. Hall, J. and Stammer, D.), Venice, Italy: ESA Publication WPP-306.
- Cleveland, W. S., Grosse, E. and Shyu, W. M. (1992). Local regression models. In *Statistical Models in S* (ed. Chambers, J. M. and Hastie, T. J.), Pacific Grove, CA: Wadsworth & Brooks/Cole.
- Costa, D. P. (1993). The secret life of marine mammals. *Oceanography* **6**, 120–128.
- Crocker, D. E., Le Boeuf, B. J. and Costa, D. P. (1997). Drift diving in female northern elephant seals: implications for food processing. *Can. J. Zool.* **75**, 27–39.
- Dragon, A. C., Bar-Hen, A., Monestiez, P. and Guinet, C. (2012). Horizontal and vertical movements as predictors of foraging success in a marine predator. *Mar. Ecol. Prog. Ser.* **447**, 243–257.
- Elliott, K. H., Davoren, G. K. and Gaston, A. J. (2007). The influence of buoyancy and drag on the dive behaviour of an Arctic seabird, the Thick-billed Murre. *Can. J. Zool.* **85**, 352–361.

- Fedak, M. A., Arnbom, T., McConnell, B. J., Chambers, C., Boyd, I. L., Harwood, J. and McCann, T. S.** (1994). Expenditure, investment and acquisition of energy in southern elephant seals. In *Elephant Seals* (ed. Le Boeuf, B. J. and Laws, R. M.), pp. 354–373. Berkeley and Los Angeles: University of California Press.
- Fedak, M. A., Lovell, P. and McConnell, B. J.** (1996). MAMVIS: A Marine Mammal Behaviour Visualization System. *J. Vis. Comput. Animat.* **7**, 141–147.
- Fedak, M. A., Lovell, P. and Grant, S. M.** (2001). Two approaches to compressing and interpreting time-depth information as collected by time-depth recorders and satellite-linked data recorders. *Mar. Mammal Sci.* **17**, 94–110.
- Fedak, M., Lovell, P., McConnell, B. and Hunter, C.** (2002). Overcoming the Constraints of Long Range Radio Telemetry from Animals: Getting More Useful Data from Smaller Packages. *Integr. Comp. Biol.* **42**, 3–10.
- Gordine, S. A.** (2013). *Extracting drift rates from compressed dive profiles by using a step-wise filtering method.* BSc(Hons) Thesis, School of Biology, University of St Andrews, St Andrews, United Kingdom, 1–26.
- Guinet, C., Vacquié-Garcia, J., Picard, B., Bessigneul, G., Lebras, Y., AC, D., Viviant, M., JPY, A. and Bailleul, F.** (2014). Southern elephant seal foraging success in relation to temperature and light conditions: insight into prey distribution. *Mar. Ecol. Prog. Ser.* **499**, 285–301.
- Hassrick, J. L., Crocker, D. E., Zeno, R. L., Blackwell, S. B., Costa, D. P. and Le Boeuf, B. J.** (2007). Swimming speed and foraging strategies of northern elephant seals. *Deep Sea Res. Part II Top. Stud. Oceanogr.* **54**, 369–383.
- Hastie, T. J.** (1991). GAM: Generalized Additive Models. In *Statistical Models in S* (ed. Chambers, C. and Hastie, T. J.), Chapman and Hall/CRC.
- Heerah, K., Hindell, M., Guinet, C. and Charrassin, J.-B.** (2014). A new method to quantify within dive foraging behaviour in marine predators. *PLoS One* **9**, e99329.
- Hyndman, R. J. and Khandakar, Y.** (2008). Automatic time series forecasting: The forecast package for R. *J. Stat. Softw.* **26**.
- Ihaka, R. and Gentleman, R.** (1996). R: a language for data analysis and graphics. *J. Comp. Graph. Stat.* **5**, 299–314.
- Kooyman, G. L.** (1973). Respiratory Adaptations in Marine Mammals. *Am. Zool.* **13**, 457–468.
- Kooyman, G. L. and Ponganis, P. J.** (1998). The physiological basis of diving to depth: Birds and Mammals. *Annu. Rev. Physiol.* **60**, 19–32.
- Kuhn, C. E., Crocker, D. E., Tremblay, Y. and Costa, D. P.** (2009). Time to eat: measurements of feeding behaviour in a large marine predator, the northern elephant seal *Mirounga angustirostris*. *J. Anim. Ecol.* **78**, 513–523.
- Le Boeuf, B. J., Naito, Y., Asaga, T., Crocker, D. and Costa, D. P.** (1992). Swim speed in a female northern elephant seal: metabolic and foraging implications. *Can. J. Zool.* **70**, 786–795.

- Le Boeuf, B. J., Crocker, D. E., Costa, D. P., Blackwell, S. B., Webb, P. M. and Houser, D. S.** (2000). Foraging Ecology of Northern Elephant Seals. *Ecol. Monogr.* **70**, 353–382.
- Lovvorn, J. R. and Jones, D. R.** (1991). Effects of body size, body-fat, and change in pressure with depth on buoyancy and costs of diving in ducks (*Aythya* spp). *Can. J. Zool.* **69**, 2879–2887.
- Miller, P. J. O., Biuw, M., Watanabe, Y. Y., Thompson, D. and Fedak, M. A.** (2012). Sink fast and swim harder! Round-trip cost-of-transport for buoyant divers. *J. Exp. Biol.* **215**, 3622–3630.
- Minamikawa, S., Naito, Y. and Uchida, I.** (1997). Buoyancy control in diving behavior of the loggerhead turtle, *Caretta caretta*. *J. Ethol.* **15**, 109–118.
- Mitani, Y., Andrews, R. D., Sato, K., Kato, A., Naito, Y. and Costa, D. P.** (2010). Three-dimensional resting behaviour of northern elephant seals: drifting like a falling leaf. *Biol. Lett.* **6**, 163–166.
- Ng, P. T. and Maechler, M.** (2007). A Fast and Efficient Implementation of Qualitatively Constrained Quantile Smoothing Splines. *Stat. Modelling* **7**, 315–328.
- Onoufriou, J.** (2012). *A validated, step-wise approach to drift dive classification using high resolution accelerometry data*. MRes Thesis, School of Biology, University of St Andrews, St Andrews, United Kingdom, 1–34.
- Page, B., McKenzie, J., Hindell, M. A. and Goldsworthy, S. D.** (2005). Drift dives by male New Zealand fur seals (*Arctocephalus forsteri*). *Can. J. Zool.* **83**, 293–300.
- Pfaff, B.** (2008). *Analysis of Integrated and Cointegrated Time Series with R*. 2nd ed. (ed. Gentleman, R., Hornik, K., and Parmigiani, G.) New York: Springer.
- Photopolou, T.** (2012). *Diving and depth use in seals: inferences from telemetry data using regression and random walk movement models*. PhD Thesis, School of Biology, University of St Andrews, St Andrews, United Kingdom, 1–250.
- Photopoulou, T., Lovell, P., Fedak, M. A., Thomas, L. and Matthiopoulos, J.** (2015). Efficient abstracting of dive profiles using a broken-stick model. *Methods Ecol. Evol.* **6**, 278–288.
- R-Core-Team** (2013). *R: A Language and Environment for Statistical Computing*. Vienna, Austria: R Foundation for Statistical Computing.
- Richard, G., Vacqu e-Garcia, J., Jouma’a, J., Picard, B., G enin, A., Arnould, J. P. Y., Bailleul, F. and Guinet, C.** (2014). Variation in body condition during the post-moult foraging trip of southern elephant seals and its consequences on diving behaviour. *J. Exp. Biol.* **217**, 2609–2619.
- Robinson, P. W., Tremblay, Y., Crocker, D. E., Kappes, M. A., Kuhn, C. E., Shaffer, S. A., Simmons, S. E. and Costa, D. P.** (2007). A comparison of indirect measures of feeding behaviour based on ARGOS tracking data. *Deep Sea Res. Part II Top. Stud. Oceanogr.* **54**, 356–368.
- The MathWorks Inc.** (2011). *MATLAB 7.13 (R2011b)*. Natick, Massachusetts, United States: The MathWorks, Inc.
- Thums, M., Bradshaw, C. J. A. and Hindell, M. A.** (2008a). A validated approach for supervised dive classification in diving vertebrates. *J. Exp. Mar. Bio. Ecol.* **363**, 75–83.

- Thums, M., Bradshaw, C. J. A. and Hindell, M. A.** (2008b). Tracking changes in relative body composition of southern elephant seals using swim speed data. *Mar. Ecol. Prog. Ser.* **370**, 249–261.
- Venables, W. N. and Ripley, B. D.** (1994). *Modern Applied Statistics With S-Plus*. New York: Springer Verlag.
- Watanabe, Y., Baranov, E. A., Sato, K., Naito, Y. and Miyazaki, N.** (2006). Body density affects stroke patterns in Baikal seals. *J. Exp. Biol.* **209**, 3269–3280.
- Webb, P. M., Crocker, D. E., Blackwell, S. B., Costa, D. P. and Le Boeuf, B. J.** (1998). Effects of buoyancy on the diving behavior of northern elephant seals. *J. Exp. Biol.* **201**, 2349–2358.

Figures

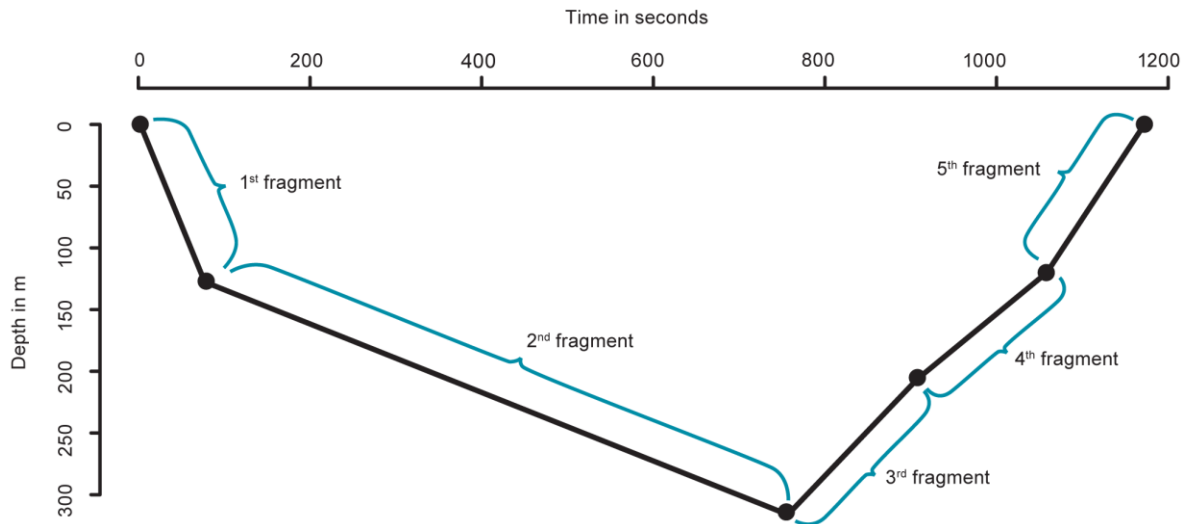


Fig. 1 A reconstructed broken-stick abstracted time-depth profile of a typical drift dive. The black circles indicate the two at-surface and four at-depth inflection points chosen by the broken-stick algorithm on-board the SRDLs. The segment between two successive inflection points describes each dive fragment, with five fragments per dive profile in total. In this example, the second dive fragment is the drift fragments of this dive profile.

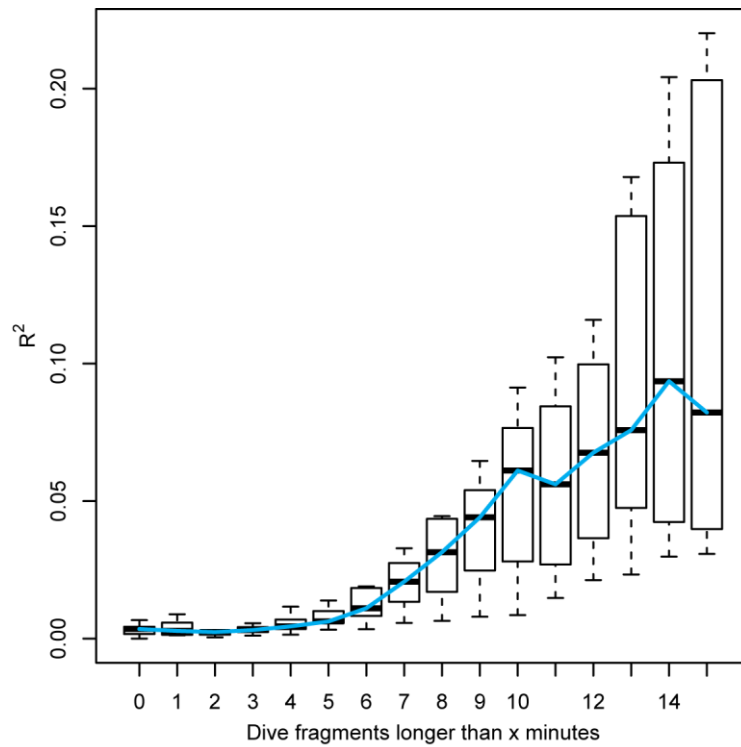


Fig. 2 Boxplot of coefficients of determination (R^2) for determining the minimum length of a drift fragment. Smooth splines were fitted to the time traces of vertical speeds using the data in each subsample (see Materials & Methods). The dive fragments in each subsample were longer than a pre-determined length and were derived from one of the eleven individuals. For each fitted spline, the R^2 was calculated as $R^2 = 1 - (\text{residual sum of squares} / \text{total sum of squares})$. This boxplot summarises the splines' goodness of fit. The fit improves starkly for splines fitted to vertical speed time series of fragments longer than eight minutes.

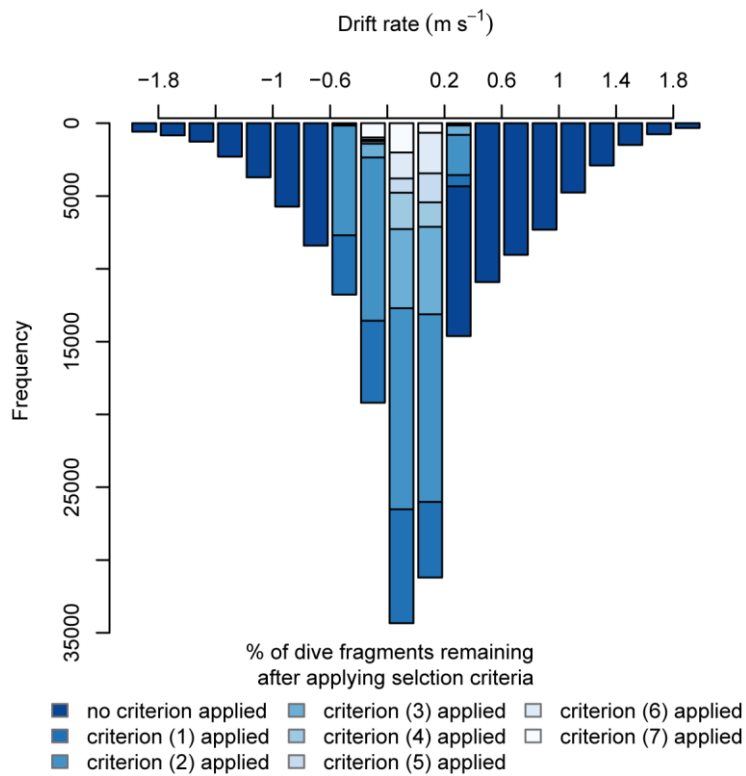


Fig. 3 Histogram of vertical speeds of dive fragments that remained after step-wise application of selection criteria. Step-wise application of all filters removed dive fragments that did not comply with the applied criterion. A small percentage of drift fragments remained. Each colour corresponds to the effect of applying one filter. If a filter was applied, the corresponding shaded section was removed.

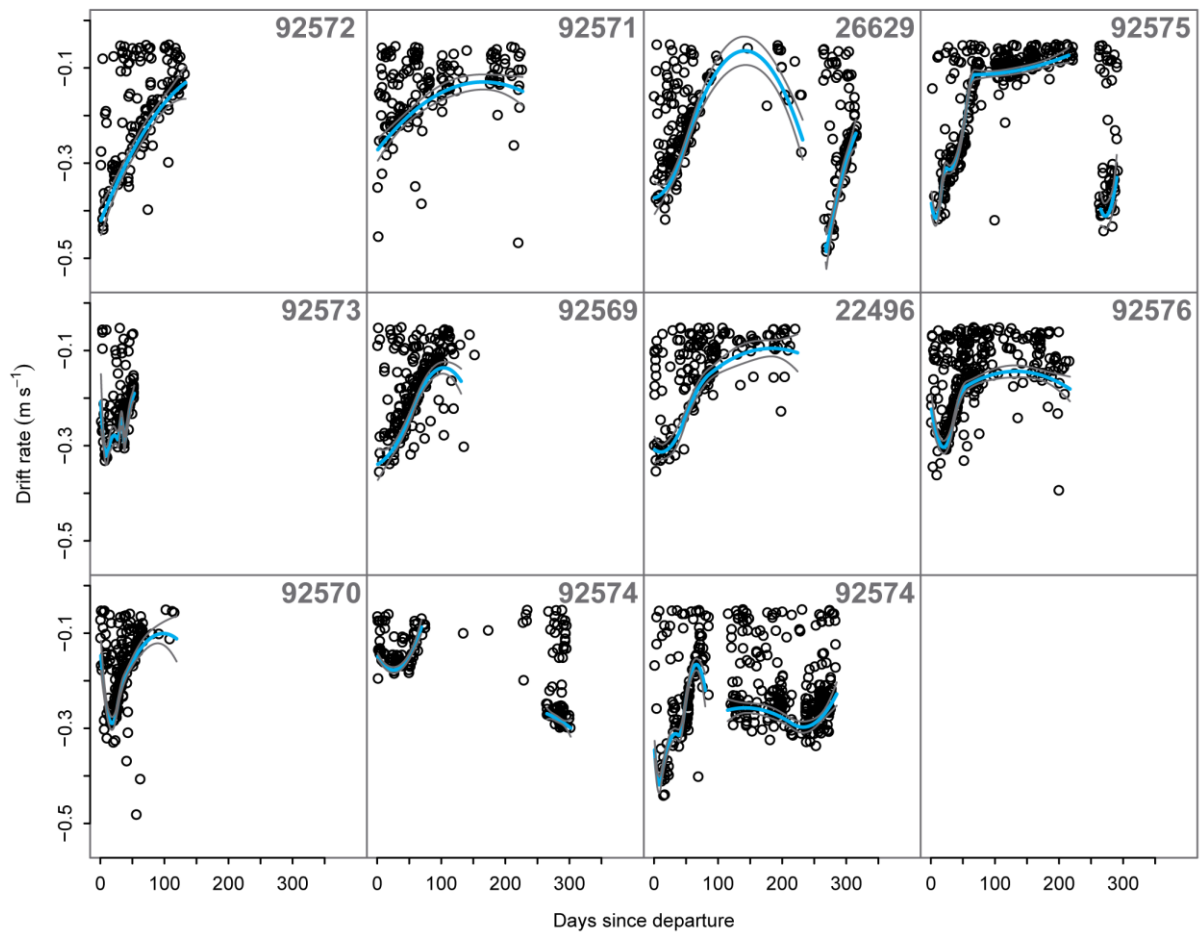


Fig. 4 Time traces of extracted drift rates for each individual. Each black circle represents a drift rate of a selected drift fragment; while the blue lines represent cobs splines fitted with confidence intervals in grey (see Materials & Methods). For three individuals (Seal ID26629, Seal ID92575 and Seal ID92574), parts of the post-breeding migrations were also recorded. The buoyancy of these individuals drastically decreased post-breeding.

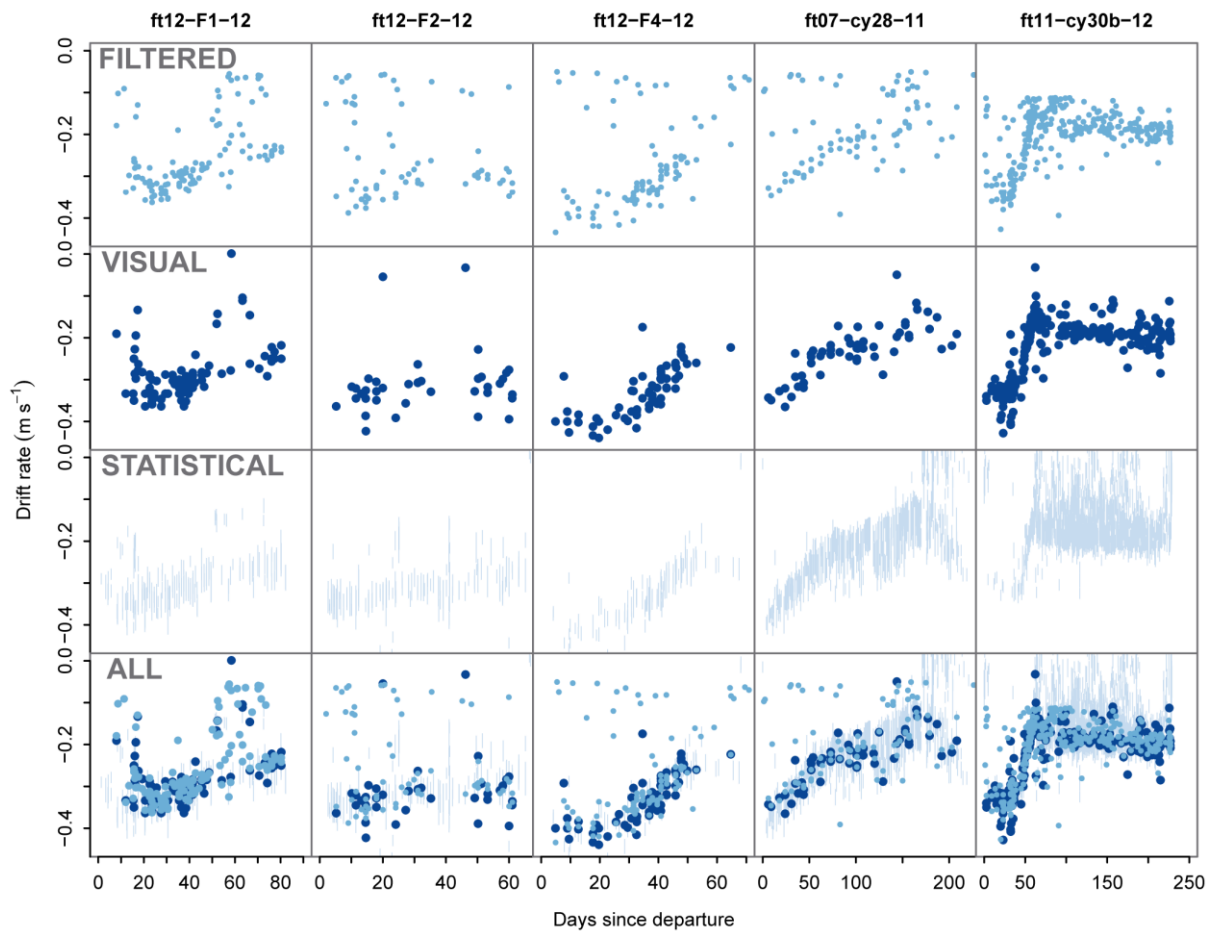


Fig. 5 Time traces of drift rates used for the independent verification. Each column displays for each individual four corresponding drift rate time series. In the 'filtered' row, the drift rate time series illustrated by small light blue points were obtained with the step-wise filtering method. Drift rates that were visually confirmed and measured using detailed high-resolution data are displayed by large dark blue points in the row labelled 'visual'. In the 'statistical' row, light blue lines represent drift rates obtained with a statistical detection algorithm adapted from Dragon et al. (2012) (see Materials & Methods). The last row displays the drift rates obtained by all three methods together, where small blue points depict the 'filtered' time series, large dark blue points represent the 'visual' time series and light blue lines show the 'statistical' time series. Strong coherence in the 'filtered' and 'visual' time series are apparent for every individual and the trends over time are consistent with those of the unsmoothed 'statistical' time series. This is further illustrated by the overlap of points and lines in the combined time series.

Tables

Seal ID	92572	92571	26629	92575	92573	92569	22496	92576	92570	92574	92567
Sex	f	f	f	f	f	f	f	f	f	f	m
Record duration (days)	132	231	318	295	52	156	229	216	119	304	285
Dive fragments	9,565	16,516	23,740	18,668	5,373	12,638	13,255	18,933	12,836	19,574	21,494
Drift fragments	138	155	236	316	114	188	160	267	175	166	407
% remaining	1.4	0.9	1.0	1.7	2.1	1.5	1.2	1.4	1.4	0.8	1.9

Table 1 Details of the eleven southern elephant seals for which drift rate time series were obtained using the step-wise filtering method. The record duration is the number of days between departure from South Georgia post-moult and the last day on which dive profiles were received. The number of dive fragments considered for filtering and the number of extracted drift fragments after filtering are detailed for each individual. By step-wise applying each selection criterion, the dive data was filtered until a small percentage of dive fragments remained that met all selection criteria (% remaining).

Criterion:	(1)	(2)	(3)	(4)	(5)	(6)	(7)
All 11 seals	32.2%	68.3%	23.6%	12.7%	59.8%	74.9%	44.4%
Seal ID92575	33.5%	78.7%	29.5%	16.9%	58.9%	74.2%	43.2%
Seal ID92569	33.1%	75.4%	20.3%	11.8%	60.4%	75.7%	45.6%
Seal ID92567	29.4%	74.1%	29.5%	19.7%	60.9%	71.9%	44.3%

Table 2 The percentage of dive fragments that remained after a single selection criterion was applied. The % remaining refers to the amount of dive fragments that were retained after applying only one of the seven selection criteria (following the order of mentioning (1) to (7) as outlined in Materials & Methods). The behaviour of each individual influenced how many dive fragments were discarded by a given selection criterion, as is exemplified for three individuals (Seal ID92575, Seal ID92569 and Seal ID92567).

Seal ID	Trip duration (days)	Total abstracted dive profiles considered	Unidentified drift fragments	Filtered drift fragments	Correctly identified by the filtering method
Ft12-F1-12	83	3002	6.5%	3.9%	77%
Ft12-F2-12	67	2286	3.0%	2.8%	60%
Ft12-F3-12	72	2695	3.0%	3.4%	72%
Ft07-cy28-11	227	2670	2.1%	3.2%	67%
Ft11-cy30b-12	226	15374	2.1%	2.2%	81%

Table 3 The accuracy of the automated step-wise filtering method compared to visual dive classification. The trip duration is the number of days between departure from the Kerguelen Islands and the last day on which dive profiles were received. Summarised are the percentage of drift dives that could be visually identified, but remained unidentified by the filtering method; the percentage of dive fragments selected by the filtering method; and the percentage of dive fragments which were correctly identified by the filtering method and visually confirmed as true drift fragments.

Seal ID	Filtered time series ARIMA (p,d,q)	Visually confirmed time series ARIMA(p,d,q)	Correlation coefficient (r)	p-value
Ft12-F1-12	(3,1,0)	(0,1,1)	0.365	<0.001
Ft12-F2-12	(0,0,0)	(0,0,0)	0.149	<0.001
Ft12-F3-12	(0,1,1)	(0,1,1)	0.142	<0.001
Ft07-cy28-11	(0,1,2)	(0,1,1)	0.362	<0.001
Ft11-cy30b-12	(5,1,0)	(0,1,5)	0.269	<0.001

Table 4 Correlation between the time series obtained by using the step-wise filtering method and the visually confirmed drift rate time series. The ARIMA model parameters for each time series are summarised; where p is the number of autoregressive terms, d is the number of non-seasonal differences required for stationarity and q is the number of lagged forecast errors in the prediction equation. Each time series was differenced d times. Pearson product-moment correlation coefficient (r) demonstrates significant correlation between the five sets of stationary time series. P-values were calculated on the basis of a simulated null-distribution (see Materials & Methods).

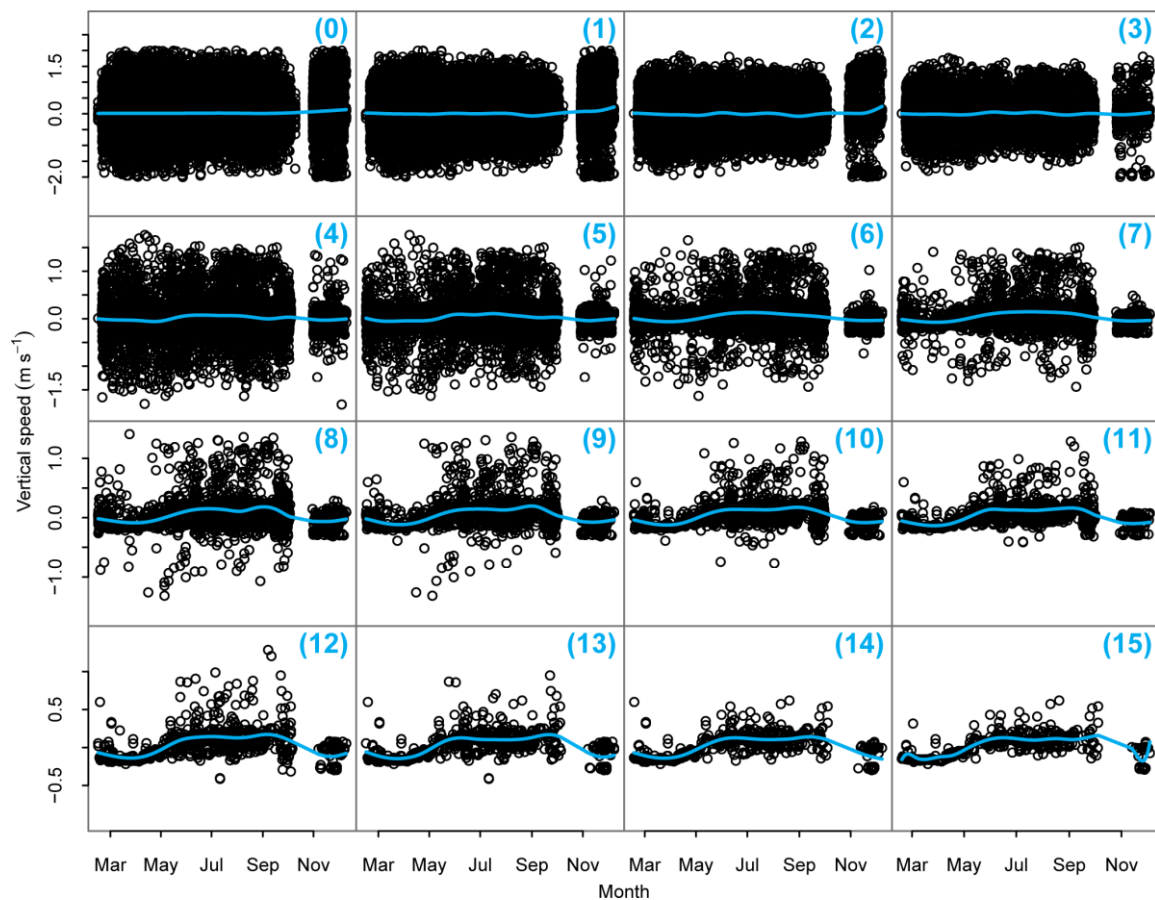


Fig. S1. Vertical speed time traces of dive fragments with varying length from one individual (seal ID92574). Each time series displays the vertical speeds of dive fragments that were longer than either (0) zero minutes; (1) one minute; (2) two minutes; (3) three minutes; (4) four minutes; (5) five minutes; (6) six minutes; (7) seven minutes; (8) eight minutes; (9) nine minutes; (10) ten minutes; (11) eleven minutes; (12) twelve minutes; (13) thirteen minutes; (14) fourteen minutes; or (15) fifteen minutes. Smooth splines, represented by blue lines, were fitted to each time series to detect any apparent trend in the underlying data (see Materials & Methods). Splines fitted to time series of vertical speeds from longer dive fragments, e.g. longer than eight minutes, showed an improved fit.

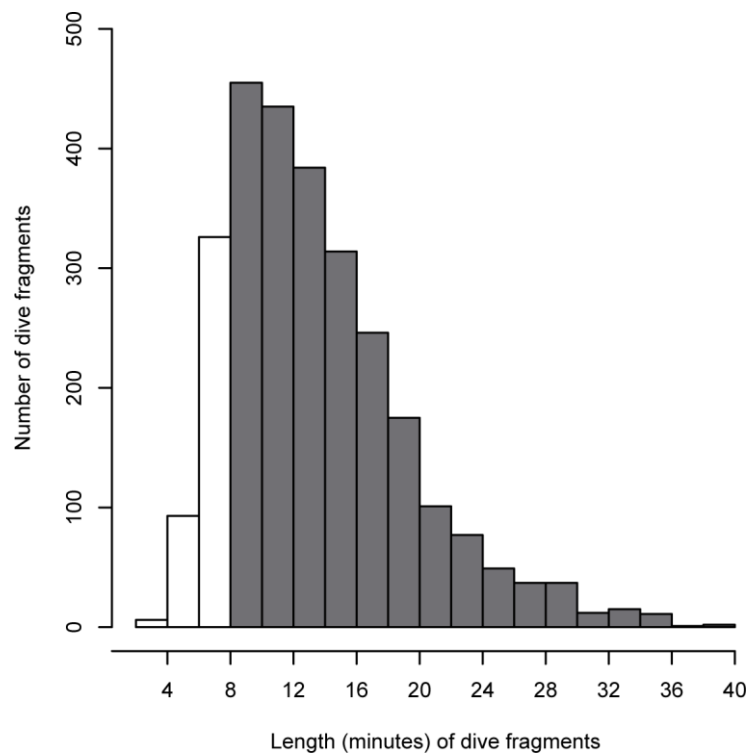


Fig. S2. Frequency histogram of the length of dive fragments. The dive fragments shaded in grey fulfilled all of the seven selection criteria of the step-wise filtering method and were therefore considered to be drift fragments. The dive fragments shaded in white were those that were discarded by selection criterion (3) because these dive fragments were shorter than the chosen minimum fragment length of eight minutes. The histogram demonstrates that most dive fragments under consideration were equal or longer than eight minutes.