

**Endothelin signaling activates *Mef2c* expression in the neural crest  
through a MEF2C-dependent positive-feedback transcriptional pathway**

Jianxin Hu<sup>1</sup>, Michael P. Verzi<sup>1,†</sup>, Ashley S. Robinson<sup>1</sup>, Paul Ling-Fung Tang<sup>1</sup>, Lisa L. Hua<sup>1</sup>, Shan-Mei Xu<sup>1</sup>, Pui-Yan Kwok<sup>1,2</sup>, and Brian L. Black<sup>1,3,\*</sup>

<sup>1</sup>Cardiovascular Research Institute, University of California, San Francisco, CA 94158, USA

<sup>2</sup>Department of Dermatology, University of California, San Francisco, CA 94143, USA

<sup>3</sup>Department of Biochemistry and Biophysics, University of California, San Francisco, CA 94158, USA

†Present Address: Dept. of Genetics, Rutgers University

\*Author for correspondence (brian.black@ucsf.edu)

## ABSTRACT

Endothelin signaling is essential for neural crest development, and dysregulated Endothelin signaling is associated with several neural crest-related disorders, including Waardenburg and other syndromes. However, in spite of the critical roles of this pathway in neural crest development and disease, the transcriptional effectors directly activated by Endothelin signaling during neural crest development remain incompletely elucidated. Here, we establish that the MADS box transcription factor MEF2C is an immediate downstream transcriptional target and effector of Endothelin signaling in the neural crest. We show that Endothelin signaling activates *Mef2c* expression in the neural crest through a conserved enhancer in the *Mef2c* locus and that CRISPR-mediated deletion of this *Mef2c* neural crest enhancer from the mouse genome abolishes Endothelin induction of *Mef2c* expression. Moreover, we demonstrate that Endothelin signaling activates neural crest expression of *Mef2c* by de-repressing MEF2C activity through a Calmodulin-CamKII-histone deacetylase signaling cascade. Thus, these findings identify a MEF2C-dependent, positive-feedback mechanism for Endothelin induction, and establish MEF2C as an immediate transcriptional effector and target of Endothelin signaling in the neural crest.

## INTRODUCTION

The Endothelin signaling pathway triggers several intracellular signaling cascades coupled to a wide variety of cellular outputs (Barton and Yanagisawa, 2008; Kedzierski and Yanagisawa, 2001). There are three Endothelin ligands in mammals: Endothelin (ET)-1, ET-2, and ET-3 (encoded by the *Edn1*, *Edn2*, and *Edn3* genes, respectively). Mature Endothelin peptides bind to and activate two seven membrane-spanning G-protein coupled receptors, referred to as ET<sub>A</sub> (encoded by the *Ednra* gene) and ET<sub>B</sub> (encoded by the *Ednrb* gene) (Kedzierski and Yanagisawa, 2001). During embryogenesis, the primary role of Endothelin signaling is in the neural crest, a migratory and pluripotent cell population unique to vertebrates (Pla and Larue, 2003). Neural crest cells originate at the dorsal aspect of the nascent neural tube and then delaminate and migrate to many different locations in the embryo, where they differentiate into melanocytes, craniofacial cartilage and bone, smooth muscle, peripheral and enteric neurons, glia, and other cell types (Knecht and Bronner-Fraser, 2002; Trainor, 2005).

Members of the Myocyte enhancer factor 2 (MEF2) family of MADS box proteins play critical roles in development and postnatally by functioning as signal-responsive transcription factors (Black and Cripps, 2010; Potthoff and Olson, 2007). Studies performed in the mouse established a requirement for MEF2C for proper craniofacial and melanocyte development and suggested that MEF2C might function in the Endothelin signaling pathway in the neural crest based on the observation that MEF2C and Endothelin signaling regulate several common downstream targets (Agarwal et al., 2011; Ruest et al., 2004; Verzi et al., 2007). Similarly, mutation of the *Mef2c* ortholog *mef2ca* in zebrafish results in craniofacial defects due to disrupted neural crest development (Miller et al., 2007). Moreover, *mef2ca* was shown to interact genetically with *edn1* in the zebrafish (Miller et al., 2007), suggesting a role for MEF2C as an effector of Endothelin signaling. However, how MEF2C

responds to Endothelin signaling to control neural crest development and how its expression is regulated by Endothelin signaling has not previously been determined.

Here, we found that Endothelin signaling induces *Mef2c* expression through a conserved neural crest enhancer, and deletion of the enhancer from the genome of mice completely abolished the responsiveness of endogenous *Mef2c* to Endothelin signaling. Using genetic and pharmacological approaches, we found that the *Mef2c*-F1 enhancer requires Endothelin signaling for activity *in vivo* and that Endothelin signaling was sufficient to induce precocious activation of the enhancer. Intriguingly, *Mef2c*-F1 is activated in response to Endothelin signaling by MEF2C itself through a consensus MEF2 binding site. Finally, we demonstrate that Endothelin-dependent induction of *Mef2c*-F1 occurs through the de-repression of MEF2C by a Calmodulin-CamKII-histone deacetylase signaling cascade. Thus, these studies identify a MEF2C-dependent, positive-feedback mechanism for Endothelin signal transduction in the neural crest.

## RESULTS AND DISCUSSION

### **The *Mef2c* gene contains an Endothelin-dependent transcriptional enhancer**

We previously identified an enhancer from the *Mef2c* locus with activity in multiple neural crest lineages (Agarwal et al., 2011). This enhancer, referred to as *Mef2c*-F1, contains a conserved MEF2 consensus site important for autoregulation of *Mef2c* expression (Fig1A; Agarwal et al., 2011), which we hypothesized might be a target of Endothelin signaling given the possible links between Endothelin signaling and MEF2C expression and function (Agarwal et al., 2011; Miller et al., 2007; Verzi et al., 2007; Wu et al., 2006). To determine if the *Mef2c*-F1 enhancer was regulated by Endothelin, we crossed *Mef2c*-F1-*lacZ* transgenic mice to *Ednra* and *Ednrb* knockout mice (Fig. 1B-E). As previously described (Agarwal et al., 2011), the *Mef2c*-F1 enhancer was active in cranial and

trunk neural crest populations at E9.5 (Fig. 1B). Interestingly, loss of either Endothelin receptor alone resulted in loss of enhancer activity in the corresponding neural crest population (Fig. 1C,D). *Mef2c*-F1-*lacZ* expression was abolished in cranial neural crest but remained present in trunk neural crest in the absence of *Ednra* (Fig. 1C). Conversely, deletion of *Ednrb* resulted in loss of *Mef2c*-F1-*lacZ* expression in trunk neural crest but did not affect expression in cranial neural crest (Fig. 1D). Importantly, simultaneous loss of both Endothelin receptors resulted in nearly complete loss of *Mef2c*-F1 enhancer activity (Fig. 1E). We also treated E9.5 *Mef2c*-F1-*lacZ* embryo explants with the dual ET<sub>A</sub>/ET<sub>B</sub> inhibitor Bosentan (Clozel and Salloukh, 2005), which also strongly inhibited enhancer activity (Fig. 1F,G). These data provide genetic and pharmacological evidence for the Endothelin-dependence of the *Mef2c*-F1 neural crest enhancer.

To further investigate the Endothelin-responsiveness of the *Mef2c*-F1 enhancer, we treated E9.5 *Mef2c*-F1-*lacZ* explants with ET-1 or PBS and examined  $\beta$ -galactosidase expression (Fig. 1H-K). Compared to PBS, ET-1 induced precocious expression of  $\beta$ -galactosidase in the trunk neural crest in a pattern consistent with migrating neural crest cells (Fig. 1H). Co-staining of transverse sections with anti- $\beta$ -galactosidase and anti-Sox10 antibodies confirmed that the induction was indeed in Sox10-positive neural crest cells (Fig. 1I-K). Induction of *Mef2c*-F1-*lacZ* was not selective for ET-1 since the other two known Endothelin ligands, ET-2 and ET-3, also activated the enhancer in embryo explants in a pattern essentially identical to ET-1 (supplementary material Fig. S1). Interestingly, another neural crest-specific enhancer in the *Mef2c* locus, *Mef2c*-F10N (Aoto et al., 2015; De Val et al., 2008) did not respond in this ET-1 induction assay, suggesting it is not similarly a target for Endothelin signaling (data not shown).

The *Mef2c*-F1 neural crest enhancer contains a 300-bp minimal region that is sufficient to direct expression *in vivo* (Agarwal et al., 2011). This minimal enhancer also responded to ET-1 induction (Fig. 1L), establishing that the 300-bp core *Mef2c*-F1 enhancer contains *cis*-acting elements

sufficient to respond to Endothelin signaling. Taken together, the gain- and loss-of-function of Endothelin signaling experiments shown in Fig. 1 establish that Endothelin signaling is required and sufficient for the activation of the *Mef2c*-F1 enhancer.

### ***Mef2c*-F1 is a *bona fide* *Mef2c* enhancer required for Endothelin-responsiveness**

The location of the *Mef2c*-F1 enhancer in the third intron of the *Mef2c* gene and the similarity in the expression patterns of *Mef2c*-F1-*lacZ* and endogenous *Mef2c* in the neural crest strongly suggest that *Mef2c*-F1 is an enhancer of *Mef2c*. To test this idea explicitly, we used CRISPR/Cas9 technology to delete the *Mef2c*-F1 enhancer from the mouse genome (Fig. 2A). *Mef2c*<sup>+/*F1*Δ</sup> mice were crossed to *Mef2c*<sup>+/*Δ*</sup> mice to generate *Mef2c*<sup>*F1*Δ/*Δ*</sup> transheterozygous mice (Fig. 2B). The *Mef2c*<sup>*Δ*</sup> allele contains a deletion in the coding region of *Mef2c*, and *Mef2c*<sup>*Δ*/*Δ*</sup> (*Mef2c*-null) mice die at E10 from profound defects in cardiac morphogenesis (Lin et al., 1997). However, while the null allele ablates *Mef2c* protein production, it does not affect *Mef2c* transcription (Fig. 2A; Lin et al., 1997). From the cross depicted in Fig. 2B, wild-type, *Mef2c*<sup>+/*F1*Δ</sup>, and *Mef2c*<sup>+/*Δ*</sup> mice were all viable and present in predicted Mendelian frequencies (Fig. 2B, and data not shown). In contrast, the majority of *Mef2c*<sup>*F1*Δ/*Δ*</sup> mice died at birth (Fig. 2B) with evidence of cleft palate and airway obstruction due to craniofacial defects (data not shown), indicating that the heteroallelic combination caused lethality and providing strong genetic evidence that the *Mef2c*-F1 enhancer is a *bona fide* enhancer of *Mef2c*. The cleft palate phenotype and apparent craniofacial obstruction and neonatal lethality observed in *Mef2c*<sup>*F1*Δ/*Δ*</sup> mice is similar to, but less severe than, the phenotype observed in *Mef2c* neural crest-specific conditional knockout mice (*Mef2c*<sup>*NCKO*</sup>), which also die at birth due to cleft palate and craniofacial obstruction (Verzi et al., 2007). The less severe phenotype observed in *Mef2c*<sup>*F1*Δ/*Δ*</sup> mice compared to *Mef2c*<sup>*NCKO*</sup> mice is consistent with the fact that *Mef2c* has at least two neural crest enhancers, *Mef2c*-F1 and *Mef2c*-F10N (Aoto et al., 2015; De Val et al., 2008), and, as a result, deletion of *Mef2c*-F1 does not result in a complete loss of *Mef2c* expression in the neural crest.

Given that *Mef2c*-F1 is a *bona fide* enhancer of *Mef2c* and is Endothelin-responsive, we next tested the induction of endogenous MEF2C protein expression by Endothelin signaling in embryos with the *Mef2c*-F1 enhancer deleted. Embryos were explanted at E9.5 and were treated with ET-1 or PBS (Fig. 2C-F). In wild-type embryo explants, MEF2C protein expression was strongly induced in Sox10-positive neural crest cells by ET-1 but not by PBS (Fig. 2C,D). Importantly, ET-1 did not induce detectable MEF2C protein expression in Sox10-positive neural crest cells in *Mef2c*<sup>F1Δ/F1Δ</sup> mutant embryos (Fig. 2F), further supporting the idea that the *Mef2c*-F1 enhancer is a *bona fide* enhancer of *Mef2c*. More importantly, these data indicate that Endothelin induction of endogenous *Mef2c* expression requires the *Mef2c*-F1 enhancer.

### **Endothelin induces the *Mef2c*-F1 neural crest enhancer through a MEF2C-dependent signaling cascade**

The potent induction of *Mef2c*-F1 by Endothelin suggested that it might be a useful tool to define the signaling cascade and immediate transcriptional effectors of Endothelin signaling in the developing neural crest. Therefore, we next examined ET-1 induction of *Mef2c*-F1 in E9.5 transgenic embryo explants in the presence of pharmacological inhibitors that target potential downstream Endothelin signaling components (Fig. 3; supplementary material Table S1). Compared to ET-1 treatment only (Fig. 3A), inhibition of Endothelin receptors using BQ-123 (ET<sub>A</sub> antagonist) and BQ-788 (ET<sub>B</sub> antagonist) blocked ET-1 induction of *Mef2c*-F1-*lacZ* (Fig. 3B). Likewise, inhibitors that targeted any of the components of the Calmodulin/CamKII signaling pathway, including inhibitors of IP<sub>3</sub> receptor (IP<sub>3</sub>R), Calmodulin (CaM), or CamKII, also blocked ET-1 induction of *Mef2c*-F1 (Fig. 3C-E; supplementary material Table S1). In contrast, inhibitors of MAPK signaling or PKC signaling components had no effect on ET-1 induction of *Mef2c*-F1 (supplementary material Table S1).

In other tissues, Calmodulin-CamK signaling stimulates the nuclear export of class II histone deacetylases (HDACs) (McKinsey et al., 2000). Therefore, we predicted that inhibition of class II

HDACs might be sufficient to activate *Mef2c*-F1. Indeed, treatment of *Mef2c*-F1 transgenic embryo explants with the HDAC inhibitor Trichostatin A (Marks et al., 2001), strongly induced enhancer activity compared to treatment with vehicle alone, even in the absence of ET-1 (Fig. 3F-I).

### **MEF2C is required for *Mef2c*-F1 enhancer activation and Endothelin-responsiveness**

A major function of class II HDACs is to repress MEF2 transcription factor activity, and the nuclear export of HDACs in response to Calmodulin/CamKII activity results in de-repression of MEF2 activity (McKinsey et al., 2000; McKinsey et al., 2002). Notably, the core Endothelin-responsive element in the *Mef2c*-F1 enhancer contains a conserved, perfect consensus MEF2 site (Fig. 1A), suggesting that the *Mef2c*-F1 enhancer might require MEF2C itself for activation and for Endothelin-responsiveness. Consistent with this idea, *Mef2c*-F1 enhancer activity was completely abolished in the neural crest lineage in *Mef2c* knockout embryos (Fig. 4A). Likewise, the MEF2 site in the *Mef2c*-F1 enhancer was required for Endothelin responsiveness. ET-1 treatment of transgenic embryo explants strongly induced expression of the wild-type *Mef2c*-F1-*lacZ* transgene in neural crest but did not similarly induce expression of a version of the transgene with a mutated MEF2 site (Fig. 4B). Importantly, MEF2C was also required for the precocious activation of endogenous *Mef2c* in the neural crest by ET-1. In the results shown in Fig. 4C, wild-type and neural crest-specific *Mef2c* knockout (*Mef2c<sup>fllox/-</sup>; Wnt1a::Cre*) [*Mef2c<sup>NCKO</sup>*] embryos were explanted and treated with ET-1 or PBS. Neural crest cells were then sorted, and *Mef2c* expression was determined by qPCR using primers recognizing both wild-type and mutant transcripts. Importantly, ET-1 induced *Mef2c* expression more than 4-fold in wild-type neural crest cells but did not induce any *Mef2c* expression in *Mef2c<sup>NCKO</sup>* neural crest cells (Fig. 4C).

Based on the work presented here, we propose that MEF2C functions in the Endothelin pathway as an immediate downstream transcriptional effector to activate the transcription of *Mef2c* and other neural crest genes (Fig. 4D). In this model, early migrating neural crest cells express Endothelin



receptors and are competent to receive the Endothelin signal, which in turn, activates gene expression by alleviating HDAC inhibition of an initial pool of MEF2C. The Endothelin signal is then amplified in a positive transcriptional feedback loop via MEF2C-dependent activation of its own expression through the Endothelin-responsive *Mef2c*-F1 enhancer element (Fig. 4D). Importantly, this model requires an initial pool of MEF2C expression that is independent of Endothelin signaling. Indeed, *Mef2c*-F1 contains SOX binding sites that are bound by Sox10 and are essential for the initial activation of the enhancer *in vivo* (Agarwal et al., 2011). Additionally, *Mef2c* expression could be activated initially through other neural crest enhancers, including F10N (Aoto et al., 2015; De Val et al., 2008) or other unidentified enhancers.

Previously, an Endothelin-MEF2 signaling cascade was shown to function in cardiomyocytes (Wu et al., 2006). Here, we identified the same connection between Endothelin signaling and MEF2 activity via the CamKII-HDAC pathway in the developing neural crest. Importantly, we extend those earlier studies by defining the *Mef2c* gene as a direct transcriptional target of the pathway and by establishing that a positive feedback loop, specifically involving MEF2C, functions downstream of Endothelin signaling. Interestingly, MEF2C and Endothelin overlap significantly in tissues other than heart and neural crest derivatives, including in the vasculature (Firulli et al., 1996; Lin et al., 1998; Yanagisawa et al., 1988), suggesting that MEF2C may function as an effector of Endothelin in other contexts as well. It will be interesting to determine if a feedback loop similar to the one defined here functions in the heart or other tissues under normal or pathologic conditions.

## MATERIALS AND METHODS

### Transgenic and mutant mice

*Rosa26<sup>mTmG/+</sup>* (MGI:3716464), *Mef2c<sup>fllox</sup>* (MGI:3603182), *Mef2c<sup>+/-</sup>* (MGI:1857491), *Mef2c*-F1-*lacZ* (MGI:5508560), *Mef2c*-F1[3-3.3]-*lacZ* (MGI:5508561), *Mef2c*-F10N-*lacZ* (MGI:4357694), and

*Wnt1::Cre<sup>Tg</sup>* (MGI:2386570) mice have been described (Agarwal et al., 2011; Danielian et al., 1997; De Val et al., 2008; Lin et al., 1997; Muzumdar et al., 2007; Vong et al., 2005). The *Mef2c<sup>F1Δ</sup>* allele was generated by CRISPR-mediated genome editing (Wang et al., 2013). 5'-atactactgatgtttgacgc-3' and 5'-agctctcagccatcgattg-3' sgRNAs, which flank the F1 enhancer, were transcribed *in vitro* using the MEGAshortscript T7 kit (Life Technologies, AM1354) and were then purified using the MEGAclear kit (Life Technologies, AM1908). Purified sgRNAs and *in vitro* transcribed Cas9 mRNA were co-injected into the cytoplasm of fertilized mouse oocytes using standard transgenic technology as described previously (De Val et al., 2004). Two independent F0 transgenic founders were each outcrossed to wild-type mice, and F1 offspring were used for subsequent *Mef2c<sup>F1Δ</sup>* intercrosses and for crosses to *Mef2c<sup>Δ</sup>* mice. All animal experiments complied with federal and institutional guidelines and were reviewed and approved by the UCSF IACUC.

### Embryo explant culture

Embryos were explanted at E9.5, and cultured as described (Rojas et al., 2005) for 1h prior to 16h treatment with 10μM ET ligand and/or pharmacological inhibitors. The concentration of pharmacological compounds used is indicated in supplementary material Table S1. For qPCR detection of *Mef2c* expression, 3 control (*Wnt1::Cre<sup>Tg</sup>*, *Rosa26<sup>mTmG/+</sup>*) explants or 3 *Mef2c<sup>NCKO</sup>* (*Wnt1::Cre<sup>Tg</sup>*, *Mef2c<sup>lox/-</sup>*, *Rosa26<sup>mTmG/+</sup>*) explants were pooled for each sample following ET-1 or PBS treatment and were digested in 300μl 0.25% trypsin, 0.7mM EDTA in PBS for 30 min at 37°C. A single cell suspension was formed and FACS sorted, and RNA was prepared. cDNA was amplified from 2ng of total RNA using the Ovation RNA-Seq System V2 (Nugen). qPCR was performed using the SYBR green system (Applied Biosystems).

**X-gal staining, luminescent  $\beta$ -galactosidase assay, immunofluorescence, and *in situ* hybridization**

X-gal staining, quantitative luminescent  $\beta$ -galactosidase assay, *in situ* hybridization with digoxigenin-labeled antisense probes, and cryosectioning and immunofluorescence were performed as described (Agarwal et al., 2011; Anderson et al., 2004; Rojas et al., 2005). Immunolabeling was done using the following primary antibodies at 1:100 dilutions in PBS with 3% BSA and 0.1% Triton X-100: anti-SOX10 (R&D AF2864); anti-MEF2C (D80C1, Cell Signaling, #5030); anti- $\beta$ -galactosidase (Abcam; Ab9361).

## **Acknowledgements**

We thank D. McCulley, J. F. Martin, and D. Clouthier for helpful discussions and M. Yanagisawa for providing mice.

## **Competing interests**

The authors declare no competing financial interests.

## **Author contributions**

J.H. performed experiments, analyzed data, and helped write the manuscript; M.P.V., A.S.R., L.L.H., P.L-F.T., S-M.X., and P-Y.K. performed experiments and analyzed data; B.L.B. conceived and directed the project, analyzed data, and wrote the paper. All authors commented on and approved the written manuscript.

## **Funding**

J.H. was supported by an AHA postdoctoral fellowship. This work was supported by grants HL089707, HL064658, and DE019118 from the NIH to B.L.B.

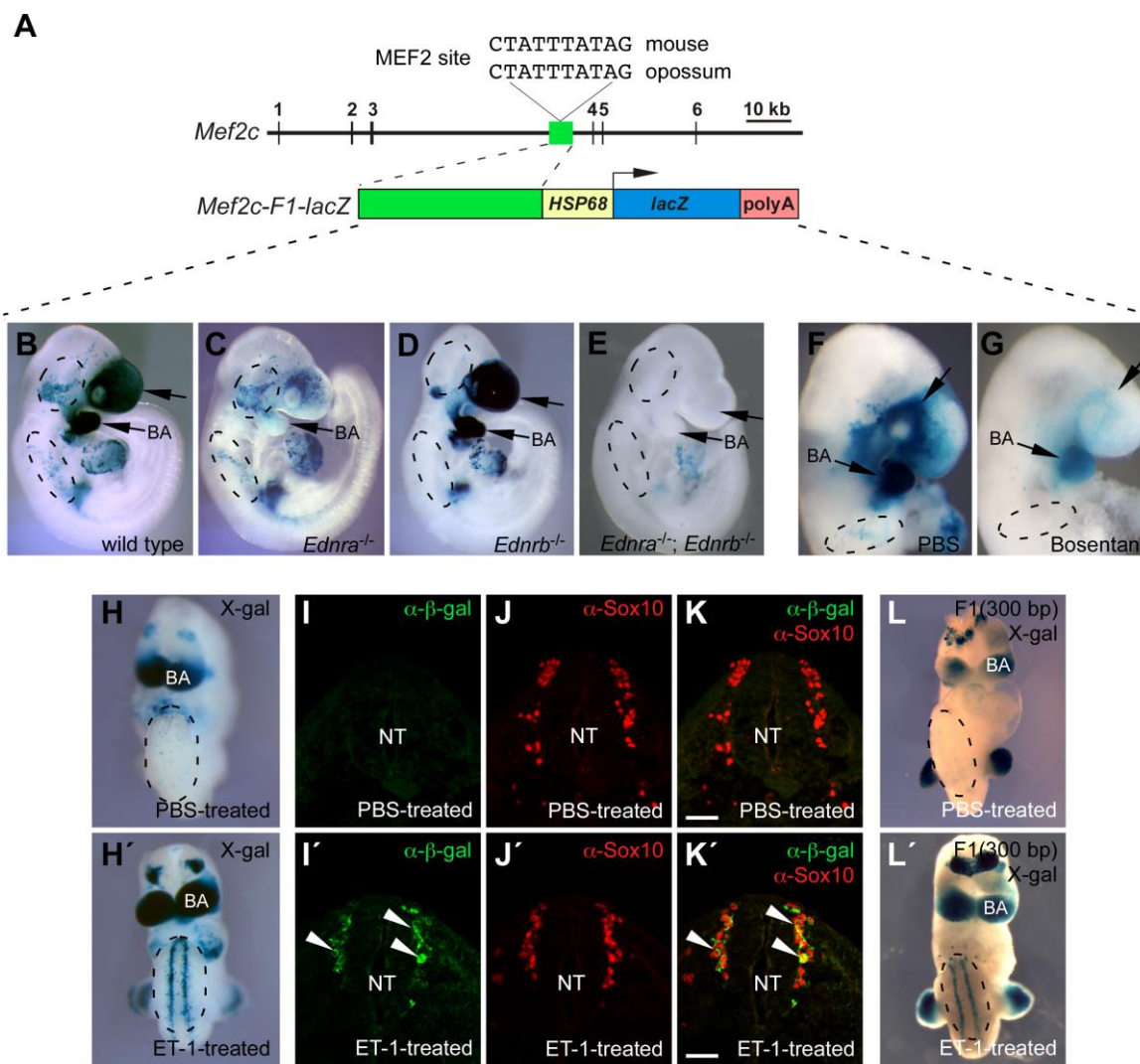
## REFERENCES

- Agarwal, P., Verzi, M. P., Nguyen, T., Hu, J., Ehlers, M. L., McCulley, D. J., Xu, S. M., Dodou, E., Anderson, J. P., Wei, M. L., et al. (2011). The MADS box transcription factor MEF2C regulates melanocyte development and is a direct transcriptional target and partner of SOX10. *Development* **138**, 2555-2565.
- Anderson, J. P., Dodou, E., Heidt, A. B., De Val, S. J., Jaehnig, E. J., Greene, S. B., Olson, E. N. and Black, B. L. (2004). HRC is a direct transcriptional target of MEF2 during cardiac, skeletal, and arterial smooth muscle development in vivo. *Mol Cell Biol* **24**, 3757-3768.
- Aoto, K., Sandell, L. L., Butler Tjaden, N. E., Yuen, K. C., Watt, K. E., Black, B. L., Durnin, M. and Trainor, P. A. (2015). Mef2c-F10N enhancer driven beta-galactosidase (LacZ) and Cre recombinase mice facilitate analyses of gene function and lineage fate in neural crest cells. *Dev Biol* **402**, 3-16.
- Barton, M. and Yanagisawa, M. (2008). Endothelin: 20 years from discovery to therapy. *Can J Physiol Pharmacol* **86**, 485-498.
- Black, B. L. and Cripps, R. M. (2010). Myocyte Enhancer Factor 2 Transcription Factors in Heart development and Disease. In *Heart Development and Regeneration* (ed. N. Rosenthal & R. P. Harvey), pp. 673-699. Oxford: Academic Press.
- Clozel, M. and Salloukh, H. (2005). Role of endothelin in fibrosis and anti-fibrotic potential of bosentan. *Ann Med* **37**, 2-12.
- Danielian, P. S., Echelard, Y., Vassileva, G. and McMahon, A. P. (1997). A 5.5-kb enhancer is both necessary and sufficient for regulation of Wnt-1 transcription in vivo. *Dev Biol* **192**, 300-309.
- De Val, S., Anderson, J. P., Heidt, A. B., Khiem, D., Xu, S. M. and Black, B. L. (2004). Mef2c is activated directly by Ets transcription factors through an evolutionarily conserved endothelial cell-specific enhancer. *Dev Biol* **275**, 424-434.
- De Val, S., Chi, N. C., Meadows, S. M., Minovitsky, S., Anderson, J. P., Harris, I. S., Ehlers, M. L., Agarwal, P., Visel, A., Xu, S. M., et al. (2008). Combinatorial regulation of endothelial gene expression by ets and forkhead transcription factors. *Cell* **135**, 1053-1064.
- Firulli, A. B., Miano, J. M., Bi, W., Johnson, A. D., Casscells, W., Olson, E. N. and Schwarz, J. J. (1996). Myocyte enhancer binding factor-2 expression and activity in vascular smooth muscle cells. Association with the activated phenotype. *Circ Res* **78**, 196-204.
- Kedzierski, R. M. and Yanagisawa, M. (2001). Endothelin system: the double-edged sword in health and disease. *Annu Rev Pharmacol Toxicol* **41**, 851-876.
- Knecht, A. K. and Bronner-Fraser, M. (2002). Induction of the neural crest: a multigene process. *Nat Rev Genet* **3**, 453-461.
- Lin, Q., Lu, J., Yanagisawa, H., Webb, R., Lyons, G. E., Richardson, J. A. and Olson, E. N. (1998). Requirement of the MADS-box transcription factor MEF2C for vascular development. *Development* **125**, 4565-4574.

- Lin, Q., Schwarz, J., Bucana, C. and Olson, E. N.** (1997). Control of mouse cardiac morphogenesis and myogenesis by transcription factor MEF2C. *Science* **276**, 1404-1407.
- Marks, P. A., Richon, V. M., Breslow, R. and Rifkind, R. A.** (2001). Histone deacetylase inhibitors as new cancer drugs. *Curr Opin Oncol* **13**, 477-483.
- McKinsey, T. A., Zhang, C. L., Lu, J. and Olson, E. N.** (2000). Signal-dependent nuclear export of a histone deacetylase regulates muscle differentiation. *Nature* **408**, 106-111.
- McKinsey, T. A., Zhang, C. L. and Olson, E. N.** (2002). MEF2: a calcium-dependent regulator of cell division, differentiation and death. *Trends Biochem Sci* **27**, 40-47.
- Miller, C. T., Swartz, M. E., Khuu, P. A., Walker, M. B., Eberhart, J. K. and Kimmel, C. B.** (2007). *mef2ca* is required in cranial neural crest to effect Endothelin1 signaling in zebrafish. *Dev Biol* **308**, 144-157.
- Muzumdar, M. D., Tasic, B., Miyamichi, K., Li, L. and Luo, L.** (2007). A global double-fluorescent Cre reporter mouse. *Genesis* **45**, 593-605.
- Pla, P. and Larue, L.** (2003). Involvement of endothelin receptors in normal and pathological development of neural crest cells. *Int J Dev Biol* **47**, 315-325.
- Potthoff, M. J. and Olson, E. N.** (2007). MEF2: a central regulator of diverse developmental programs. *Development* **134**, 4131-4140.
- Rojas, A., De Val, S., Heidt, A. B., Xu, S. M., Bristow, J. and Black, B. L.** (2005). Gata4 expression in lateral mesoderm is downstream of BMP4 and is activated directly by Forkhead and GATA transcription factors through a distal enhancer element. *Development* **132**, 3405-3417.
- Ruest, L. B., Xiang, X., Lim, K. C., Levi, G. and Clouthier, D. E.** (2004). Endothelin-A receptor-dependent and -independent signaling pathways in establishing mandibular identity. *Development* **131**, 4413-4423.
- Trainor, P. A.** (2005). Specification of neural crest cell formation and migration in mouse embryos. *Semin Cell Dev Biol* **16**, 683-693.
- Verzi, M. P., Agarwal, P., Brown, C., McCulley, D. J., Schwarz, J. J. and Black, B. L.** (2007). The transcription factor MEF2C is required for craniofacial development. *Dev Cell* **12**, 645-652.
- Vong, L. H., Ragusa, M. J. and Schwarz, J. J.** (2005). Generation of conditional Mef2<sup>loxP</sup>/loxP mice for temporal- and tissue-specific analyses. *Genesis* **43**, 43-48.
- Wang, H., Yang, H., Shivalila, C. S., Dawlaty, M. M., Cheng, A. W., Zhang, F. and Jaenisch, R.** (2013). One-step generation of mice carrying mutations in multiple genes by CRISPR/Cas-mediated genome engineering. *Cell* **153**, 910-918.
- Wu, X., Zhang, T., Bossuyt, J., Li, X., McKinsey, T. A., Dedman, J. R., Olson, E. N., Chen, J., Brown, J. H. and Bers, D. M.** (2006). Local InsP<sub>3</sub>-dependent perinuclear Ca<sup>2+</sup> signaling in cardiac myocyte excitation-transcription coupling. *J Clin Invest* **116**, 675-682.

**Yanagisawa, M., Kurihara, H., Kimura, S., Tomobe, Y., Kobayashi, M., Mitsui, Y., Yazaki, Y., Goto, K. and Masaki, T.** (1988). A novel potent vasoconstrictor peptide produced by vascular endothelial cells. *Nature* **332**, 411-415.

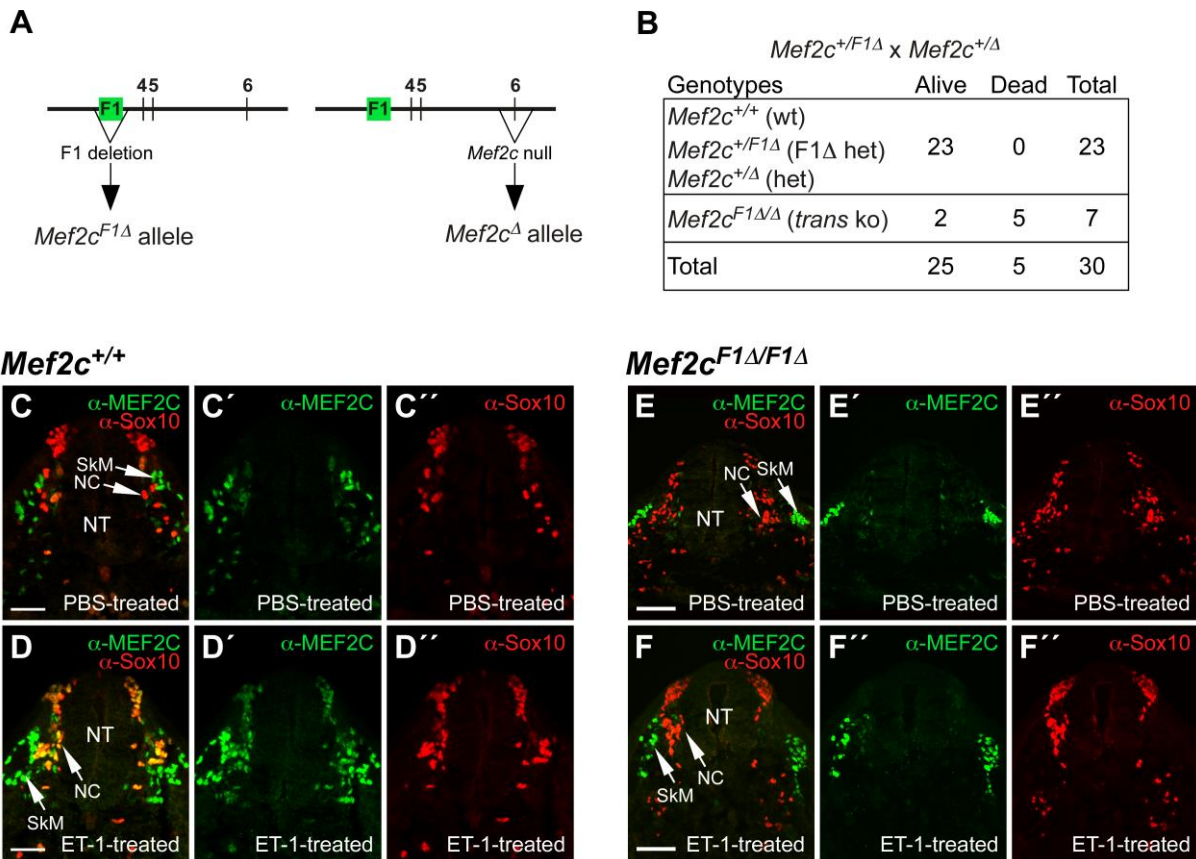
## FIGURES



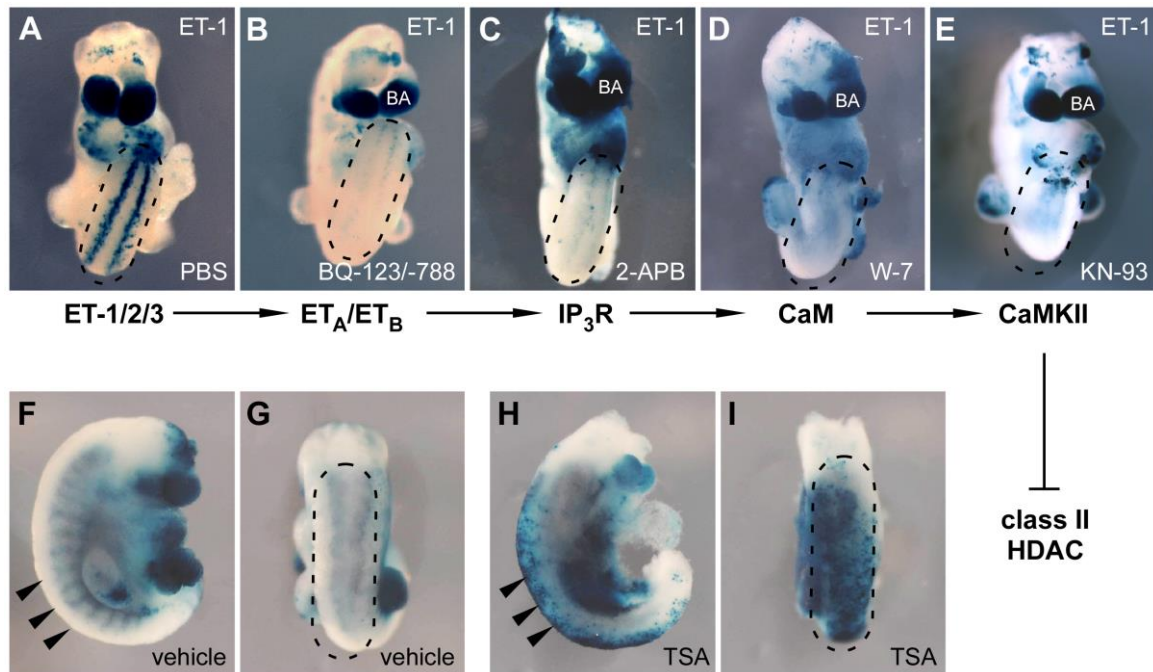
**Fig. 1. *Mef2c*-F1 is an Endothelin-responsive neural crest enhancer.** (A) Diagram of the Endothelin responsive *cis*-regulatory element in the *Mef2c* locus and the *Mef2c*-F1-*lacZ* transgenic reporter construct. (B-E)  $ET_A$  and  $ET_B$  are required for *Mef2c*-F1 Endothelin-responsive enhancer activity *in vivo*. *Mef2c*-F1-*lacZ* transgenic mice were crossed into wild-type (B), *Ednra*-null (C), *Ednrb*-null (D), and *Ednra*; *Ednrb* double null (E) backgrounds and were analyzed by X-gal staining at E9.5. (F, G) Bosentan, a dual Endothelin receptor antagonist, inhibited *Mef2c*-F1 enhancer activity in the neural crest of explanted E9.5 embryos. Trunk neural crest, dotted circles; cranial neural crest, black arrows. (H-L) ET-1 precociously activated the *Mef2c*-F1 enhancer in transgenic reporter



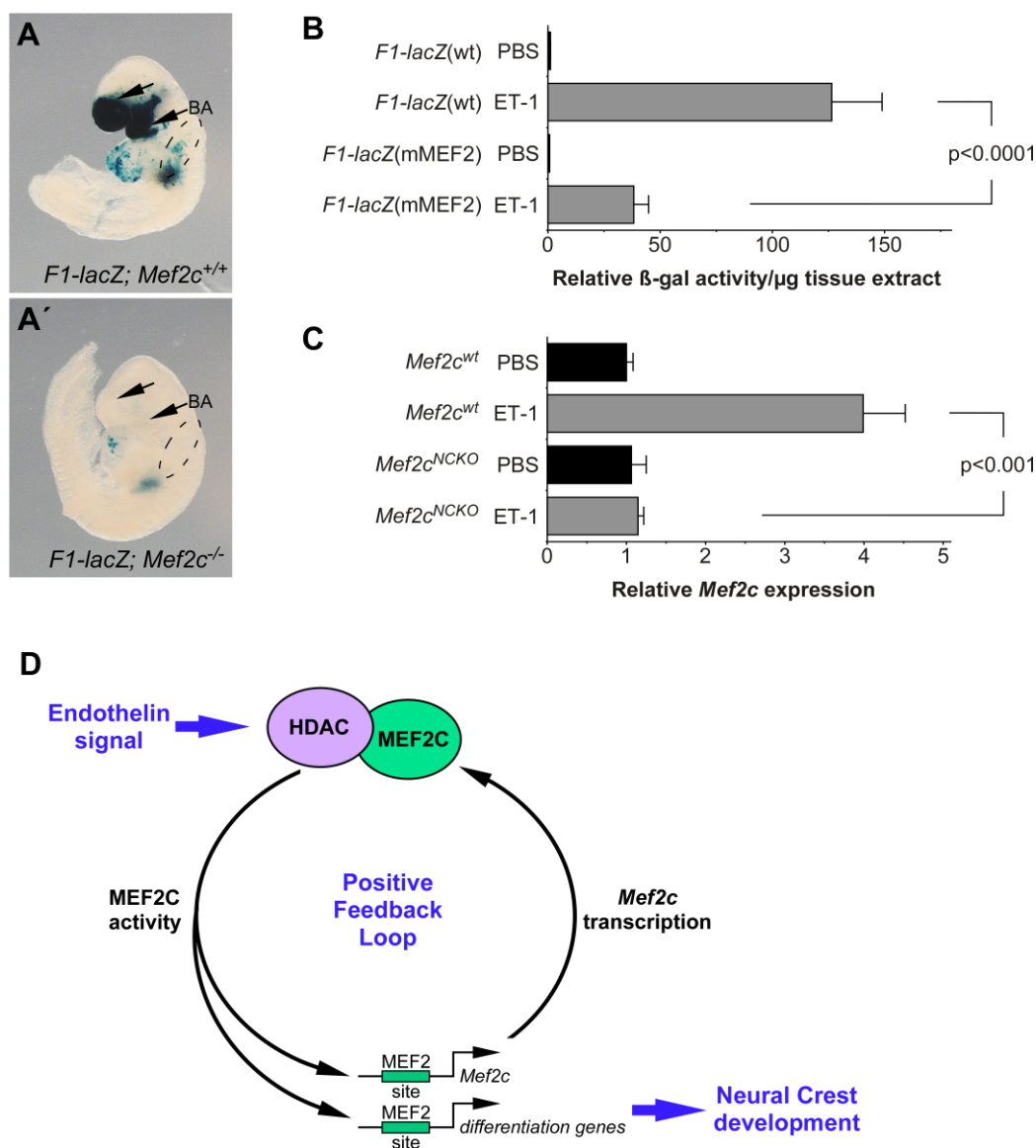
embryo explants as shown by X-gal staining (H-H', dotted circles) and by immunofluorescence using anti- $\beta$ -galactosidase antibody (I-K, I'-K';  $\beta$ -galactosidase is marked by green fluorescence; neural crest cells are marked by Sox10-positive red fluorescence). Three independent *Mef2c*-F1-*lacZ* transgenic lines displayed nearly identical responses to ET-1 and Bosentan treatment. (L-L') A 300-bp minimal enhancer responds to ET-1 (dotted circles); two independent *Mef2c*-F1[3-3.3]-*lacZ* transgenic lines were examined, and both showed a similar ET-1 response. Note the absence of  $\beta$ -galactosidase expression in trunk neural crest cells in PBS-treated explants (H) and the complete overlap of  $\beta$ -galactosidase expression with Sox10-positive neural crest cells in ET-1-treated explants (I'-K'). BA: branchial arch; NT, neural tube. Bars, 100 $\mu$ m.



**Fig. 2. *Mef2c*-F1 is a bona fide Endothelin-responsive enhancer of *Mef2c*.** (A) Schematics of the mouse *Mef2c* locus showing exons 4-6 (vertical black lines) and the *Mef2c*-F1 enhancer (green box). The *Mef2c*<sup>F1Δ</sup> and *Mef2c*-null (*Mef2c*<sup>Δ</sup>) knockout strategies are indicated. (B) Number of live and dead offspring of each indicated genotype from *Mef2c*<sup>+/*F1Δ*</sup> × *Mef2c*<sup>+/*Δ*</sup> intercrosses. Note that 23/23 wt and heterozygous (het) offspring survived, while only 2/7 *Mef2c*<sup>F1Δ/Δ</sup> survived; Fisher's exact test,  $p=0.0001$ . (C-F) The *Mef2c*-F1 enhancer is required for ET-1 to induce endogenous MEF2C expression in trunk neural crest (NC) cells. ET-1 induced endogenous MEF2C protein expression in trunk neural crest cells (marked by Sox10 immunofluorescence) in ET-1-treated (D) but not in PBS-treated (C) explants. Note MEF2C expression in skeletal muscle (SkM) in both PBS- and ET-1-treated explants (C',D'). ET-1 treatment failed to induce endogenous MEF2C protein expression in trunk neural crest cells in *Mef2c*<sup>F1Δ/F1Δ</sup> explants (F). Note the absence of co-expression of MEF2C and Sox10 in *Mef2c*<sup>F1Δ/F1Δ</sup> explants treated with either PBS (E) or ET-1 (F). NT, neural tube. Bars, 100μm.

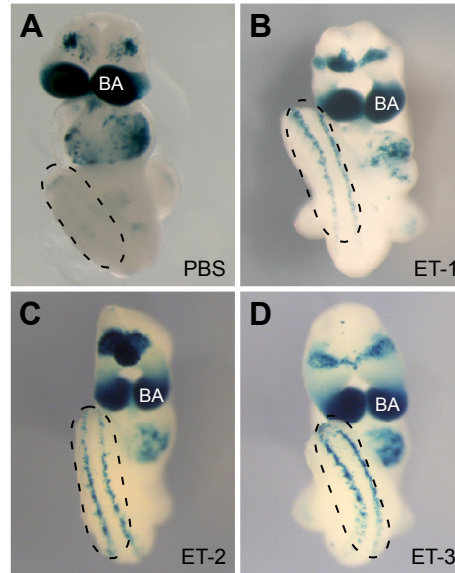


**Fig. 3. Endothelin activates gene expression in the neural crest via a Calmodulin-HDAC - dependent pathway.** (A-E) Inhibition of ET<sub>A</sub> and ET<sub>B</sub> using BQ-123 and BQ-788 (B), IP<sub>3</sub> receptor using 2-APB (C), Calmodulin (CaM) using W-7 (D), or CamKII using KN-93 (E) was sufficient to block ET-1-induced activation of *Mef2c-F1-lacZ* in the developing neural crest (dashed circles), as in (A). (F-I) Treatment of E9.5 transgenic embryo explants with Trichostatin A (TSA), an HDAC inhibitor (H,I), activated *Mef2c-F1-lacZ* in an Endothelin-independent fashion compared to vehicle-treated explants (F,G) in trunk neural crest cells (black arrowheads and dashed circles). A minimum of 4 embryos was analyzed for each treatment. BA, branchial arch.



**Fig. 4. MEF2C is required for *Mef2c*-F1 enhancer activity.** (A) E9.0 *Mef2c*-F1-*lacZ* (*F1-lacZ*) transgenic embryos on a wild-type/*Mef2c*<sup>+/+</sup> (A) or *Mef2c*<sup>-/-</sup> (A') background were stained with X-gal. Loss of MEF2C resulted in a nearly complete loss of enhancer activity in cranial (black arrows) and trunk (dashed circles) neural crest. BA, branchial arch. (B) Wild-type *Mef2c*-F1-*lacZ* [*F1-lacZ*(wt)] transgenic embryos and embryos with a *Mef2c*-F1-*lacZ* transgene with a mutated MEF2 site [*F1-lacZ*(mMEF2)] were explanted and treated with PBS or ET-1 and then assayed for  $\beta$ -galactosidase activity via quantitative luminescent assay. Mutation of the MEF2 site in the *Mef2c*-F1 enhancer significantly reduced enhancer activity induced by ET-1. (C) *Mef2c* neural crest conditional knockout (*Mef2c*<sup>NCKO</sup>) and control embryo explants were treated with ET-1 or PBS and neural crest

cells from the caudal region of the explant were sorted and assessed for endogenous *Mef2c* expression by qPCR. Note that ET-1 failed to induce endogenous *Mef2c* expression in the absence of MEF2C function in the neural crest. (D) A positive feedback model for MEF2C-dependent activation of Endothelin-induced gene expression during neural crest development. Error bars in (C,D) represent standard deviation.



**Figure S1. *Mef2c*-F1 is a general Endothelin-responsive enhancer.** All three Endothelin ligands, ET-1 (B), ET-2 (C) and ET-3 (D) similarly activate *Mef2c*-F1-*lacZ* in developing trunk neural crest cells. A PBS-treated explant (A) is shown as a negative control; note the lack of X-gal staining in trunk neural crest cells in the PBS-treated explant. Also note that enhancer activity is present in neural crest cells in the branchial arches in PBS-treated and ET-1-treated explants since enhancer induction occurred prior to explant. BA: branchial arch; black dotted circles mark trunk neural crest cells.

**Table S1.** Compounds tested in embryo explant assays for inhibition (or activation) of ET-1-induced activation of the *Mef2c*-F1 Endothelin-responsive enhancer.

<b>Inhibitor</b>	<b>Target</b>	<b>Concentration</b>	<b>Inhibition of ET-1 induction</b>
BQ-123/BQ-788	EdnrA/B	100 $\mu$ M	Yes
Bosentan	EdnrA/B	0.1mg/ml	Yes
U0126	MEK1/2	100 $\mu$ M	No
MEK inhibitor I	MEK1/2	100 $\mu$ M	No
Bisindolylmaleimide I, Hydrochloride	protein kinase C	50 $\mu$ M	No
Chelerythrine Chloride	protein kinase C	70 $\mu$ M	No
SB 203580, Hydrochloride	p38 MAP kinase	100 $\mu$ M	No
KN-93	CamKII	50 $\mu$ M	Yes
BIX 02188/02189	MEK 5	80 $\mu$ M	Not Conclusive (toxic?)
2-APB	1,4,5-trisphosphate (IP <sub>3</sub> ) receptor	100 $\mu$ M	Yes
W-7, Hydrochloride	calmodulin	10 $\mu$ M	Yes
Trichostatin A (TSA)	Class I and II HDAC	100 $\mu$ M	Activation in the absence of ET-1