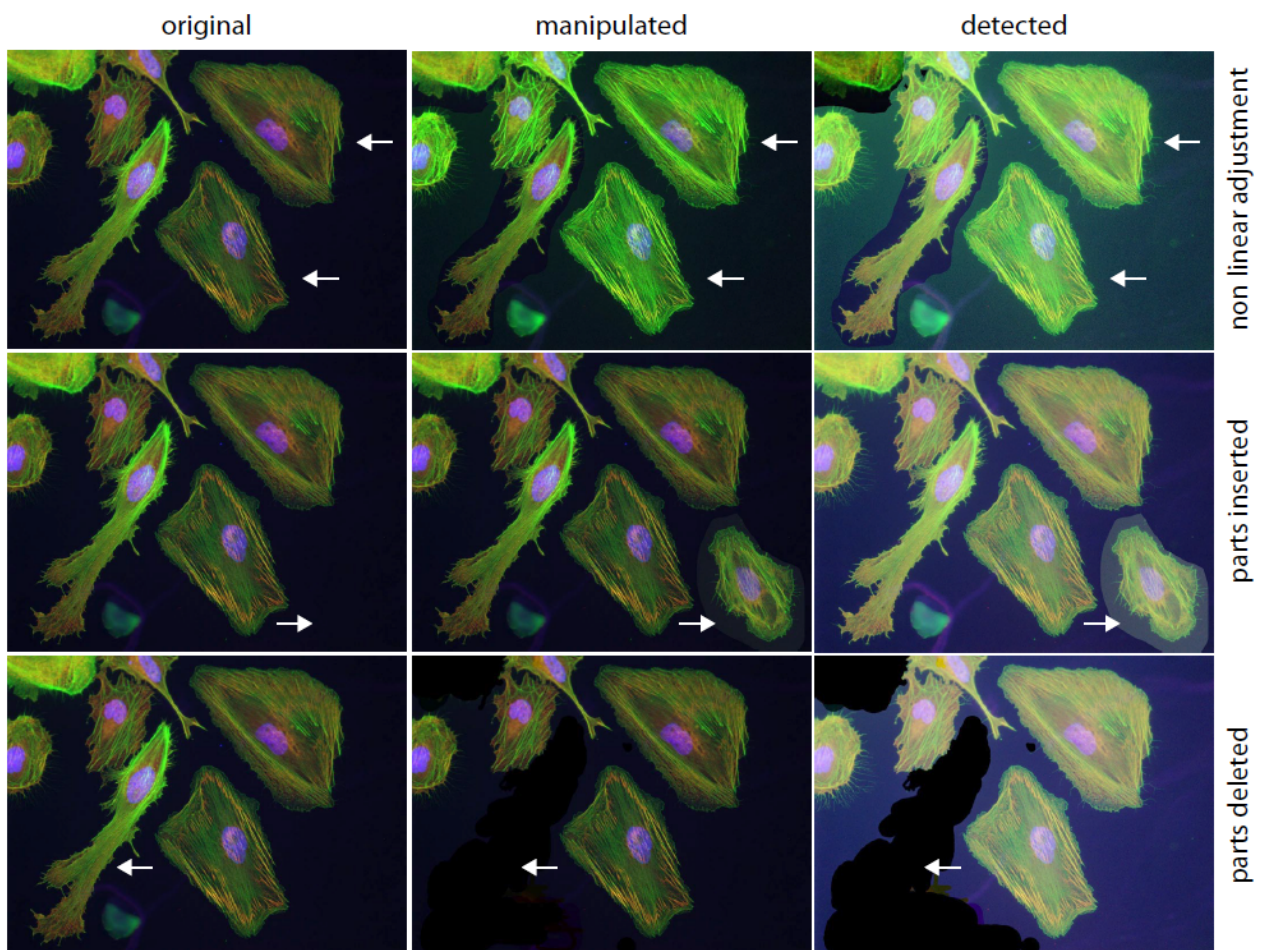


Best Practices: gels, blots and images in JEB figures

Journal of Experimental Biology is committed to maintaining the integrity of the scientific record. We therefore screen all digital images in accepted manuscripts for signs of inappropriate manipulation.

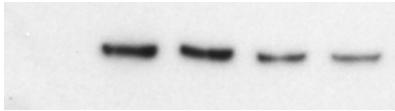
Any article that does not meet the following requirements will be delayed in the publication process; your paper may be rejected on the basis of non-compliance with these guidelines.

- Do not add to, alter, enhance, obscure, move or remove a specific feature of an image - the focus should be on the data rather than its presentation (e.g. do not 'clean up' backgrounds or remove/obscure imperfections and non-specific bands)



- Adjustments should be applied to the whole image so no specific feature of the original data, including background, is obscured, eliminated or misrepresented as a consequence. Any alterations, such as non-linear adjustments (e.g. changes to gamma settings), must be disclosed in the appropriate figure legends and in the Materials and Methods section.

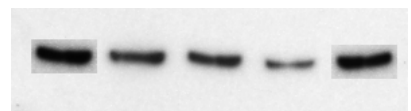
e.g. Original data



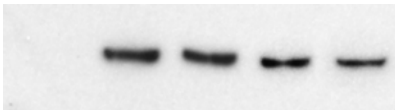
Extra bands added data



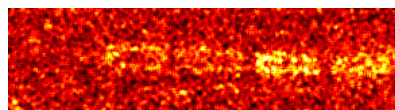
Extra bands detected



Non-linear adjustment

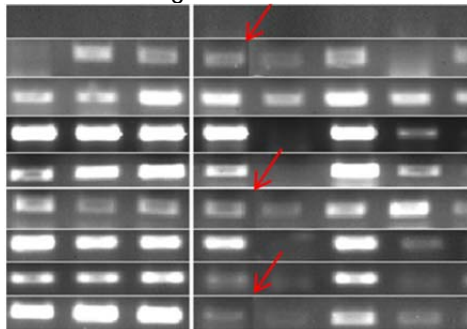


Non-linear adjustment detected

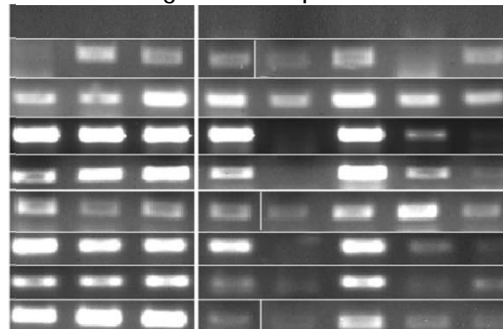


- The splicing of multiple images to suggest they come from a single micrograph or gel is not allowed.
- Any grouping or consolidation of data (e.g. removal of lanes from gels and blots or cropping of images) must be made apparent (i.e. with dividing lines or white spaces) and should be explicitly indicated in the figure legends.

e.g. Submitted figure



Corrected figure with splices marked

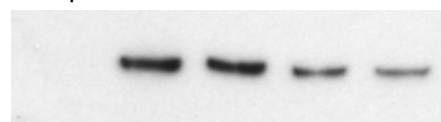


- At least several band widths should be retained above and below cropped bands
- A positive and a negative control and a set of molecular weight markers must be indicated on all images of gels and blots.
- High-contrast gels and blots are unacceptable (i.e. no white backgrounds) - grey backgrounds are expected unless otherwise justified

Not acceptable



Acceptable



- The same data in whole or part should not be presented in multiple figures (e.g. loading controls; different exposures of the same gel), unless explicitly stated and justified
- Previously published data in whole or in part (e.g. loading controls) should not be presented